

1

♠ 10543 AK82 AJ3 K7
 ♠ QJ109 Q1054 QJ952
 ♠ AKQ876 ♠ 64 86 1083
 ♠ J92 ♠ 753 ♠ K972 ♠ A64

Board (1) Av: NS=-450

N-S	E-W	Contract	L	N-S	E-W	IMP
1	7	4S	E 5 D7	450		0
7	1	4S	E 5 H3	450		0
2	8	4S	W 6 HQ	480		-1
8	2	4S	W 4 D4	420		1
3	5	4S	E 5 H5	450		0
5	3	4S	E 5 D7	450		0
4	6	4S	E 5 D2	450		0
6	4	4S	E 5 H7	450		0
9	15	4S	E 5 D7	450		0
15	9	4S	E 5 D7	450		0
11	13	4S	E 5 D7	450		0
13	11	4S	E 5 S2	450		0
12	14	4S	W 5 CQ	450		0
14	12	3NT	W 4 CQ	430		1

2

♠ 432 ♠ AQ65 ♠ Q1086 ♠ AJ
 ♠ A87 ♠ K1094 ♠ A95 ♠ Q105
 ♠ KQ105 ♠ J83 ♠ K74 ♠ K42
 ♠ J96 ♠ 72 ♠ J32 ♠ 98763

Board (2) Av: NS=-370

N-S	E-W	Contract	L	N-S	E-W	IMP
1	7	3NT	W 3 H9	400		-1
7	1	3NT	W 3 S7	400		-1
2	8	3NT	W 3 S8	400		-1
8	2	3NT	W 3 H4	400		-1
3	5	3NT	E-1 S9	50		9
5	3	3NT	E-1 H7	50		9
4	6	3NT	W 3 S7	400		-1
6	4	3NT	E 3 C9	400		-1
9	15	3NT	E 4 D2	430		-2
15	9	3NT	W 4 S7	430		-2
11	13	3NT	W 3 C5	400		-1
13	11	3NT	W 3 S7	400		-1
12	14	3NT	E 3 D2	400		-1
14	12	3NT	W 3 CT	400		-1

3

♠ 5 ♠ Q1042 ♠ QJ104 ♠ AJ43
 ♠ 643 ♠ 53 ♠ K53 ♠ Q9862
 ♠ KQJ1082 ♠ J987 ♠ A9 ♠ 7
 ♠ A97 ♠ AK6 ♠ 8762 ♠ K105

Board (3) Av: NS=-220

N-S	E-W	Contract	L	N-S	E-W	IMP
1	7	3S	E 4 D8	170		2
7	1	4S	E-1 HK	100		8
2	8	4S	E-1 HK	100		8
8	2	2S	E 4 D8	170		2
3	5	2H	W 3 C6	140		2
5	3	2H	E 4 HA	170		2
4	6	2S	E 4 HA	170		2
6	4	4H	E 4 C5	620		-9
9	15	2S	E 4 D8	170		2
15	9	2S	E 4 HA	170		2
11	13	4H	W 4 D3	620		-9
13	11	2S	E 4 D8	170		2
12	14	2NT	N-3 SK	150		2
14	12	4H	E 4 C5	620		-9

4

♠ 964 ♠ 1095 ♠ AK3 ♠ QJ109
 ♠ J10 ♠ KQJ862 ♠ 1054 ♠ 84
 ♠ K8753 ♠ A ♠ J986 ♠ 762
 ♠ AQ2 ♠ 743 ♠ Q72 ♠ AK53

Board (4) Av: NS=+470

N-S	E-W	Contract	L	N-S	E-W	IMP
1	7	4H	N 4 D8	620		4
7	1	4H	N 4 C6	620		4
2	8	4H	S 4 DA	620		4
8	2	3H	N 3 C7	140		-8
3	5	3H	N 3 C6	140		-8
5	3	3NT	N 4 CQ	630		4
4	6	3NT	S 4 CQ	630		4
6	4	3H	N 4 S5	170		-7
9	15	3H	S 4 CQ	170		-7
15	9	4H	S 4 CQ	620		4
11	13	4H	N 4 C6	620		4
13	11	3NT	S 3 CQ	600		4
12	14	4H	N 4 S3	620		4
14	12	3H	S 4 CQ	170		-7

5

♠ 654 ♠ AJ72 ♠ Q3 ♠ 10986
 ♠ A873 ♠ 1098 ♠ J105 ♠ QJ3
 ♠ 2 ♠ KQ65 ♠ AK9864 ♠ A4
 ♠ KQJ109 ♠ 43 ♠ 72 ♠ K752

Board (5) Av: NS=-210

N-S	E-W	Contract	L	N-S	E-W	IMP
1	7	3NT	W 4 CT	430		-6
7	1	3NT	W-2 S6	100		7
2	8	6D	E-1 SK	50		6
8	2	5D	E 5 SK	400		-5
3	5	3D	E 5 SQ	150		2
5	3	5D	E-1 SK	50		6
4	6	5D	E-1 SK	50		6
6	4	3NT	W 3 S6	400		-5
9	15	5D	E 5 SK	400		-5
15	9	3NT	W-2 S4	100		7
11	13	3D	E 5 SK	150		2
13	11	3NT	W 4 S4	430		-6
12	14	5D	E 5 SK	400		-5
14	12	3NT	W 3 CT	400		-5

6

♠ 62 ♠ K54 ♠ KQ653 ♠ Q43
 ♠ Q10 ♠ Q103 ♠ A1042 ♠ AJ96
 ♠ A973 ♠ J8762 ♠ J ♠ 875
 ♠ KJ854 ♠ A9 ♠ 987 ♠ K102

Board (6) Av: NS=-40

N-S	E-W	Contract	L	N-S	E-W	IMP
1	7	2D	N 2 C5	90		4
7	1	2NT	N 2 H6	120		4
2	8	2S	S-2 H3	100		-2
8	2	2S	S 2 HT	110		4
3	5	2S	S 2 H3	110		4
5	3	2S	N-1 H3	50		0
4	6	2NT	N-3 H6	150		-3
6	4	2H	E 2 S5	110		-2
9	15	2NT	N-4 H6	200		-4
15	9	2S	S-3 H3	150		-3
11	13	1NT	N-3 H6	150		-3
13	11	2H	E 2 HA	110		-2
12	14	2H	E 2 D7	110		-2
14	12	2S	S 2 HQ	110		4

7

♠ A2 ♠ Q642 ♠ 108 ♠ K9742
 ♠ KQJ6 ♠ K8753 ♠ Q97 ♠ 3
 ♠ 10754 ♠ AJ9 ♠ 52 ♠ AQ85
 ♠ 983 ♠ 10 ♠ AKJ643 ♠ J106

Board (7) Av: NS=-160

N-S	E-W	Contract	L	N-S	E-W	IMP
1	7	4S	E 4 DA	620		-10
7	1	4S	E 4 DK	620		-10
2	8	3H	W 3 DT	140		1
8	2	2S	W 3 DT	140		1
3	5	4H	W-1 DT	100		6
5	3	1H	E 2 C2	110		2
4	6	4H	W-1 DT	100		6
6	4	4S	E-1 DK	100		6
9	15	4S	E 4 DA	620		-10
15	9	3H	W 3 DT	140		1
11	13	4S	E-1 DK	100		6
13	11	3D	S-1 SK	100		2
12	14	3D	S-2 SK	200		-1
14	12	3H	W 3 C2	140		1

8

♠ Q54 ♠ KQ104 ♠ Q2 ♠ 7653
 ♠ KJ976 ♠ 9 ♠ J765 ♠ AQJ
 ♠ 103 ♠ A8653 ♠ A843 ♠ 102
 ♠ A82 ♠ J72 ♠ K109 ♠ K984

Board (8) Av: NS=-100

N-S	E-W	Contract	L	N-S	E-W	IMP
1	7	2S	W 2 HK	110		0
7	1	3D	W 3 HK	110		0
2	8	2S	W 3 HK	140		-1
8	2	2NT	S-1 D5	50		2
3	5	2S	W-1 HQ	50		4
5	3	2D	E 2 HK	90		0
4	6	2S	W-1 HK	50		4
6	4	2D	W 2 HK	90		0
9	15	2S	W 3 C5	140		-1
15	9	2S	W 3 HK	140		-1
11	13	2S	W 3 HK	140		-1
13	11	2D	W 3 HK	110		0
12	14	2S	W 3 HK	140		-1
14	12	2S	W 3 HK	140		-1

9

♠Q1097
 ♠AK9
 ♠3
 ♠J9854
 ♠84
 ♠Q10842
 ♠K986
 ♠A6
 ♠J5
 ♠J653
 ♠J1052
 ♠K103
 ♠AK632
 ♠7
 ♠AQ74
 ♠Q72

Board (9) Av: NS=+430

N-S	E-W	Contract	L	N-S	E-W	IMP
1	7	4S	S 4 H2	420		0
7	1	4S	S 4 CA	420		0
2	8	4S	S 4 H2	420		0
8	2	4S	S 4 CA	420		0
3	5	4S	S 4 CA	420		0
5	3	4S	N 5 H4	450		1
4	6	4S	S 4 CA	420		0
6	4	4S	S 4 H4	420		0
9	15	4S	S 5 H4	450		1
15	9	4S	S 5 S4	450		1
11	13	4S	S 4 CA	420		0
13	11	4S	S 4 CA	420		0
12	14	4S	S 4 H2	420		0
14	12	4S	S 4 CQ	420		0

10

♠1072
 ♠643
 ♠92
 ♠A10952
 ♠K9
 ♠KQ72
 ♠AJ8
 ♠KJ74
 ♠AJ85
 ♠A9
 ♠K107543
 ♠3
 ♠Q643
 ♠J1085
 ♠Q6
 ♠Q86

Board (10) Av: NS=-920

N-S	E-W	Contract	L	N-S	E-W	IMP
1	7	6D	E 6 C6	1370		-10
7	1	6D	E 7 HT	1390		-10
2	8	3NT	W 6 C9	690		6
8	2	6NT	W 7 S7	1470		-11
3	5	3NT	W 6 C9	690		6
5	3	3NT	E 7 C2	720		5
4	6	3NT	W 7 C5	720		5
6	4	5D	E 6 C6	620		7
9	15	6D	E 7 HJ	1390		-10
15	9	5D	E 6 C6	620		7
11	13	6D	E 6 HJ	1370		-10
13	11	3NT	W 5 C5	660		6
12	14	3NT	W 7 C2	720		5
14	12	3NT	W 7 C4	720		5

11

♠1054
 ♠Q1053
 ♠4
 ♠Q9873
 ♠K93
 ♠9864
 ♠K532
 ♠J6
 ♠QJ2
 ♠K7
 ♠AQJ876
 ♠102
 ♠A876
 ♠AJ2
 ♠109
 ♠AK54

Board (11) Av: NS=+70

N-S	E-W	Contract	L	N-S	E-W	IMP
1	7	3S	S 3 D3	140		2
7	1	3D	E 3 CK		110	-5
2	8	2D	E 3 CK		110	-5
8	2	2S	S 3 D5	140		2
3	5	2H	N 3 DA	140		2
5	3	3D	E-1 CA	50		-1
4	6	3D	W-1 C7	50		-1
6	4	2D	W 2 H3		90	-4
9	15	2Dx	W 2 H4		180	-6
15	9	1NT	S 3 H8	150		2
11	13	1NT	S 4 H4	180		3
13	11	3S	S 4 D2	170		3
12	14	3H	N 3 DA	140		2
14	12	2S	N 3 H4	140		2

12

♠A654
 ♠963
 ♠82
 ♠10965
 ♠QJ1082
 ♠Q85
 ♠AK6
 ♠J2
 ♠7
 ♠J1074
 ♠Q109543
 ♠84
 ♠K93
 ♠AK2
 ♠J7
 ♠AKQ73

Board (12) Av: NS=+280

N-S	E-W	Contract	L	N-S	E-W	IMP
1	7	4C	S-1 DK		100	-9
7	1	2NT	S 3 SQ	150		-4
2	8	2NT	S 3 SQ	150		-4
8	2	3NT	S 5 SQ	660		9
3	5	3NT	S 3 SQ	600		8
5	3	2NT	N 3 SQ	150		-4
4	6	3NT	S 3 SQ	600		8
6	4	3NT	S-2 DA		200	-10
9	15	3D	E-1 CA	50		-6
15	9	3NT	N 3 S7	600		8
11	13	3NT	N 3 HJ	600		8
13	11	2NT	S-1 DK		100	-9
12	14	2C	S 3 DA	110		-5
14	12	3NT	S 3 ST	600		8

13

♠AKQ2
 ♠KQ102
 ♠A8642
 ♠108
 ♠864
 ♠753
 ♠KJ972
 ♠J975
 ♠A95
 ♠K10
 ♠10543
 ♠643
 ♠J73
 ♠QJ9
 ♠AQ86

Board (13) Av: NS=+610

N-S	E-W	Contract	L	N-S	E-W	IMP
1	7	5D	S 5 H4	600		0
7	1	3NT	S 3 C7	600		0
2	8	3NT	S-1 D2		100	-12
8	2	3NT	S 3 C7	600		0
3	5	3NT	S 5 ST	660		2
5	3	5D	N 5 HA	600		0
4	6	3NT	S 4 ST	630		1
6	4	3NT	S 4 H4	630		1
9	15	5D	N 5 C5	600		0
15	9	3NT	S 3 H8	600		0
11	13	5D	N 5 C5	600		0
13	11	5D	N 5 C5	600		0
12	14	5D	N 5 S7	600		0
14	12	4H	N 5 C5	650		1

14

♠J10
 ♠A109872
 ♠K1098
 ♠8
 ♠A9
 ♠QJ
 ♠AQ2
 ♠KJ9762
 ♠K8642
 ♠K43
 ♠J3
 ♠543
 ♠Q753
 ♠65
 ♠7654
 ♠AQ10

Board (14) Av: NS=-80

N-S	E-W	Contract	L	N-S	E-W	IMP
1	7	2S	W 2 C8		110	-1
7	1	4S	E-3 H6	150		6
2	8	3NT	W 5 H9		460	-9
8	2	3C	W 4 HA		130	-2
3	5	3C	W 4 HA		130	-2
5	3	5C	E-1 HA	50		4
4	6	3NT	E 3 H6		400	-8
6	4	3C	W 4 SJ		130	-2
9	15	2S	E 2 H6		110	-1
15	9	3S	E-2 H6	100		5
11	13	3H	N-1 DJ		50	1
13	11	3NT	E-1 H6	50		4
12	14	4S	E-1 H6	50		4
14	12	2S	W 2 C8		110	-1

15

♠AKJ9
 ♠AQ972
 ♠AQ
 ♠97
 ♠64
 ♠J8
 ♠J10874
 ♠KJ103
 ♠10753
 ♠1053
 ♠K2
 ♠Q864
 ♠Q82
 ♠K64
 ♠9653
 ♠A52

Board (15) Av: NS=+530

N-S	E-W	Contract	L	N-S	E-W	IMP
1	7	6H	N-1 S5		100	-12
7	1	4H	N 6 DK	680		4
2	8	3NT	N 5 S6	660		4
8	2	4H	S 5 S3	650		3
3	5	4H	N 5 H5	650		3
5	3	4H	N 5 C4	650		3
4	6	6H	N-1 C5		100	-12
6	4	4H	N 5 C4	650		3
9	15	4H	N 6 DK	680		4
15	9	4H	N 5 H5	650		3
11	13	6H	N-1 S3		100	-12
13	11	3NT	N 5 S3	660		4
12	14	3NT	N 5 S3	660		4
14	12	4H	N 5 S5	650		3

16

♠AQ98752
 ♠8
 ♠3
 ♠A1092
 ♠4
 ♠K1065
 ♠7
 ♠J876543
 ♠J103
 ♠Q742
 ♠Q542
 ♠KQ
 ♠K6
 ♠AJ93
 ♠AKJ10986

Board (16) Av: NS=+310

N-S	E-W	Contract	L	N-S	E-W	IMP
1	7	7S	S-2 CK		100	-9
7	1	6D	S 6 H6	920		12
2	8	7S	N-1 CK		50	-8
8	2	6S	N 7 S3	1010		12
3	5	7S	N-2 CK		100	-9
5	3	6D	N 6 C4	920		12
4	6	7S	N 7 CK	1510		15
6	4	7S	N-2 CK		100	-9
9	15	7S	N-2 CQ		100	-9
15	9	7S	N-2 CK		100	-9
11	13	6S	N 6 H2	980		12
13	11	7S	N-2 CK		100	-9
12	14	7S	N-2 CK		100	-9
14	12	5S	N 6 S4	480		5

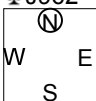
17

♠A73
♥2
♦AK1065
♣J962

♠104
♥AQ1064
♦98
♣10874

♠KJ98
♥KJ983
♦7
♣KQ5

♠Q652
♥75
♦QJ432
♣A3



Board (17) Av:NS=-20

N-S	E-W	Contract	L	N-S	E-W	IMP
1	7	4S	N-2	CK	100	-2
7	1	4D	N 4	D7	130	4
2	8	4D	S 4	D6	130	4
8	2	3H	E 3	DQ	140	-3
3	5	3D	N 4	CK	130	4
5	3	3H	E-1	DA	50	2
4	6	4H	E-1	DQ	50	2
6	4	3H	W 3	DK	140	-3
9	15	3H	E 3	DQ	140	-3
15	9	4H	E 4	CA	420	-9
11	13	5D	N-1	D7	50	-1
13	11	4H	W-1	DA	50	2
12	14	3H	E 3	S5	140	-3
14	12	4H	W-1	DA	50	2

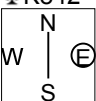
18

♠J1097
♥AJ1098
♦
♣K842

♠864
♥542
♦9732
♣A96

♠Q32
♥KQ7
♦A1086
♣J103

♠AK5
♥63
♦KQJ54
♣Q75



Board (18) Av:NS=+310

N-S	E-W	Contract	L	N-S	E-W	IMP
1	7	3NT	S 3	D2	600	7
7	1	3NT	S-1	S8	100	-9
2	8	4H	N-1	CJ	100	-9
8	2	4S	N 4	CA	620	7
3	5	3NT	S 3	D7	600	7
5	3	3NT	N-1	D4	100	-9
4	6	3NT	S 3	C4	600	7
6	4	3NT	S 3	D2	600	7
9	15	3NT	S-1	D2	100	-9
15	9	3NT	S 4	D2	630	8
11	13	3NT	S-2	D5	200	-11
13	11	3NT	S 3	D7	600	7
12	14	4S	N 4	DA	620	7
14	12	4H	S-1	D3	100	-9

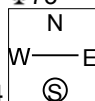
19

♠AQJ94
♥KQ986
♦3
♣73

♠732
♥5
♦J976
♣109654

♠1086
♥J
♦AKQ852
♣AQJ

♠K5
♥A107432
♦104
♣K82



Board (19) Av:NS=+490

N-S	E-W	Contract	L	N-S	E-W	IMP
1	7	4H	S 5	D7	450	-1
7	1	4Hx	S 6	S2	790	7
2	8	5Hx	S 5	D2	650	4
8	2	4H	S 5	D4	450	-1
3	5	4H	S 5	D6	450	-1
5	3	5H	N 5	DJ	450	-1
4	6	4H	S 5	D4	450	-1
6	4	4H	S 5	D6	450	-1
9	15	4H	S 5	D6	450	-1
15	9	4H	S 5	CT	450	-1
11	13	5Hx	S 5	D7	650	4
13	11	5H	N 6	DA	480	0
12	14	5H	S 5	D7	450	-1
14	12	6H	S-1	D5	50	-11

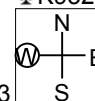
20

♠742
♥54
♦K932
♣K952

♠A3
♥Q962
♦A7
♣J10873

♠QJ9
♥AK103
♦10854
♣AQ

♠K10865
♥J87
♦QJ6
♣64



Board (20) Av:NS=-670

N-S	E-W	Contract	L	N-S	E-W	IMP
1	7	4H	E 6	C6	680	0
7	1	4H	W 5	D3	650	1
2	8	4H	W 6	H3	680	0
8	2	4H	E 6	DQ	680	0
3	5	4H	W 6	C2	680	0
5	3	4H	E 6	DQ	680	0
4	6	4H	E 6	H7	680	0
6	4	4H	W 6	D2	680	0
9	15	4H	E 6	S6	680	0
15	9	5H	W 6	S2	680	0
11	13	4H	E 5	DQ	650	1
13	11	4H	W 5	D2	650	1
12	14	4H	E 5	DQ	650	1
14	12	4H	W 6	D2	680	0