

1

♠ 9652
♥ 82
♦ 1098765
♣ K

♠ KJ
♥ A43
♦ J4
♣ 1098753

♠ A843
♥ Q10965
♦ AQ42
♣

♠ Q107
♥ KJ7
♦ AKQ32
♣ J6

Board (1) Av: NS=-160

N-S	E-W	Contract	N-S	E-W	IMP
1	2 4D	N-2		100	2
2	1 2H	E 5		200	-1
3	4 3NT	S-2		100	2
4	3 2H	E 5		200	-1
9	12 4Hx	E 6		790	-12
12	9 4D	N-1		50	3
10	11 2H	E 5		200	-1
11	10 2H	E 3		140	1
13	15 2H	E 5		200	-1
15	13 2H	E 5		200	-1
14	16 2H	E 6		230	-2
16	14 5D	S-1		50	3

2

♠ AKQ1095
♥ AQJ4
♦ K
♣ 72

♠ 8643
♥ 1096
♦ 5
♣ 109854

♠ 7
♥ 872
♦ Q762
♣ AKQJ6

♠ J2
♥ K53
♦ AJ109843
♣ 3

Board (2) Av: NS=+640

N-S	E-W	Contract	N-S	E-W	IMP
1	2 4S	N 6		680	1
2	1 4S	N 6		680	1
3	4 3S	N 6		230	-9
4	3 5S	N 6		680	1
9	12 4S	N 6		680	1
12	9 4S	N 6		680	1
10	11 5Cx	E-2		300	-8
11	10 4S	N 6		680	1
13	15 4H	N 6		680	1
15	13 4S	N 6		680	1
14	16 4S	N 6		680	1
16	14 5S	N 6		680	1

3

♠ Q4
♥ A7
♦ K8543
♣ 9754

♠ AKJ10753
♥ KQ9
♦ Q10
♣ 3

♠ 98
♥ 10843
♦ A97
♣ 10862

♠ 62
♥ J652
♦ J62
♣ AKQJ

Board (3) Av: NS=-260

N-S	E-W	Contract	N-S	E-W	IMP
1	2 4S	W 4		620	-8
2	1 3S	W 5		200	2
3	4 3S	W 4		170	3
4	3 5C	S-3		150	3
9	12 4C	S-3		150	3
12	9 2S	W 4		170	3
10	11 4S	W 4		620	-8
11	10 4S	W 4		620	-8
13	15 3S	W 3		140	3
15	13 3S	W 4		170	3
14	16 3S	W 4		170	3
16	14 5D	S-4		200	2

4

♠ AJ8
♥ AJ5
♦ AQ96
♣ 976

♠ KQ5
♥ Q1084
♦ KJ104
♣ Q2

♠ 107
♥ K97632
♦ 72
♣ A53

♠ 96432
♥
♦ 853
♣ KJ1084

Board (4) Av: NS=+110

N-S	E-W	Contract	N-S	E-W	IMP
1	2 2H	E 2		110	-6
2	1 3H	E-1		100	0
3	4 2S	N 2		110	0
4	3 2S	N 3		140	1
9	12 2S	N 5		200	3
12	9 2S	N 3		140	1
10	11 3H	E-1		100	0
11	10 2S	N 3		140	1
13	15 2S	N 2		110	0
15	13 3H	E-2		200	3
14	16 3S	S 4		170	2
16	14 4S	S-1		100	-5

5

♠ 106
♥ AQ93
♦ J7643
♣ QJ

♠ Q8
♥ J864
♦ A108
♣ 10874

♠ KJ4
♥ K2
♦ Q92
♣ K9532

♠ A97532
♥ 1075
♦ K5
♣ A6

Board (5) Av: NS=+20

N-S	E-W	Contract	N-S	E-W	IMP
1	2 2D	N-1		100	-3
2	1 2S	S 3		140	3
3	4 3C	E-1		50	1
4	3 1NT	E 1		90	-3
9	12 4S	S-2		200	-6
12	9 2C	E 2		90	-3
10	11 1NT	E 1		90	-3
11	10 3C	E-1		50	1
13	15 2S	S 2		110	3
15	13 2S	S 2		110	3
14	16 2D	N 2		90	2
16	14 2S	S 2		110	3

6

♠ 8642
♥ 6532
♦ 953
♣ Q7

♠ Q3
♥ Q87
♦ AKQ10
♣ J965

♠ 109
♥ J1094
♦ J642
♣ K42

♠ AKJ75
♥ AK
♦ 87
♣ A1083

Board (6) Av: NS=+350

N-S	E-W	Contract	N-S	E-W	IMP
1	2 1S	S 4		170	-5
2	1 4S	S 4		420	2
3	4 3S	S 4		170	-5
4	3 4S	S 4		420	2
9	12 4S	S 4		420	2
12	9 4S	S 4		420	2
10	11 4S	S 4		420	2
11	10 4S	S 4		420	2
13	15 4S	S 4		420	2
15	13 1S	S 4		170	-5
14	16 4S	S 4		420	2
16	14 1S	S 4		170	-5

7

♠ AKQ
♥ A108
♦ J87
♣ K1042

♠ J10963
♥ 7
♦ A654
♣ AJ7

♠ 72
♥ KJ9543
♦ Q9
♣ Q85

♠ 854
♥ Q62
♦ K1032
♣ 963

Board (7) Av: NS=+60

N-S	E-W	Contract	N-S	E-W	IMP
1	2 1NT	N 2		120	2
2	1 2H	E 2		110	-5
3	4 2S	W-2		200	4
4	3 2H	E 2		110	-5
9	12 1NT	N-2		200	-6
12	9 1NT	N 1		90	1
10	11 2H	E-2		200	4
11	10 1NT	N 2		120	2
13	15 1NT	N 2		120	2
15	13 2H	E-2		200	4
14	16 1NT	N 1		90	1
16	14 2H	E 2		110	-5

8

♠ AJ74
♥ 1054
♦ QJ42
♣ 76

♠ K92
♥ 63
♦ 73
♣ AKQJ52

♠ Q65
♥ KQ82
♦ AK5
♣ 843

♠ 1083
♥ AJ97
♦ 10986
♣ 109

Board (8) Av: NS=-420

N-S	E-W	Contract	N-S	E-W	IMP
1	3 3NT	E 3		400	1
3	1 3NT	E 4		430	0
2	4 3NT	E 3		400	1
4	2 3NT	E 4		430	0
5	6 3NT	E 4		430	0
6	5 3NT	E 3		400	1
7	8 3NT	W 4		430	0
8	7 3NT	E 3		400	1
13	16 3NT	E 3		400	1
16	13 3NT	E 3		400	1
14	15 3NT	E 4		430	0
15	14 3NT	E 4		430	0

9

♠ J87
♥ 10976
♦ 532
♣ 653

♠ 1096
♥ AJ32
♦ K9
♣ A874

♠ Q53
♥ KQ54
♦ QJ104
♣ Q10

♠ AK42
♥ 8
♦ A876
♣ KJ92

Board (9) Av: NS=+60

N-S	E-W	Contract	N-S	E-W	IMP
1	3	1NTxS 1	180		3
3	1	1NT S-3		150	-5
2	4	2S S-1		50	-3
4	2	3H W 3		140	-5
5	6	4H E-1	100		1
6	5	4H E-2	200		4
7	8	4H W-1	100		1
8	7	1S S 2	110		2
13	16	4H W-2	200		4
16	13	4H W 4		620	-12
14	15	1NTxS 1	180		3
15	14	4H W-1	100		1

10

♠ QJ954
♥ 764
♦ 102
♣ Q97

♠ K3
♥ AJ8
♦ J7653
♣ J108

♠ 72
♥ K932
♦ K84
♣ K642

♠ A1086
♥ Q105
♦ AQ9
♣ A53

Board (10) Av: NS=+60

N-S	E-W	Contract	N-S	E-W	IMP
1	3	1NT S 2	120		2
3	1	2S S 4	170		3
2	4	2S S 2	110		2
4	2	2S S 3	140		2
5	6	2S S 2	110		2
6	5	2S S 3	140		2
7	8	3S N-1		100	-4
8	7	3S S-2		200	-6
13	16	3S S 3	140		2
16	13	2S S 2	110		2
14	15	3S S-1		100	-4
15	14	2S S-1		100	-4

11

♠ J93
♥ AJ10
♦ 93
♣ J6543

♠ AQ8
♥ 873
♦ AJ107
♣ AQ7

♠ 4
♥ 965
♦ K86542
♣ 1098

♠ K107652
♥ KQ42
♦ Q
♣ K2

Board (11) Av: NS=-50

N-S	E-W	Contract	N-S	E-W	IMP
1	3	4D E 4	130		-2
3	1	3D E 3	110		-2
2	4	3D E 4	130		-2
4	2	2NT W 3	150		-3
5	6	4D E 4	130		-2
6	5	2S S 2	110		4
7	8	3S S-1		50	0
8	7	3D E 4		130	-2
13	16	4D E-1	50		3
16	13	2S S 2	110		4
14	15	2S S 2	110		4
15	14	3S S-1		50	0

12

♠ J542
♥ 542
♦ KJ864
♣ 10

♠ Q
♥ Q76
♦ A1093
♣ AKJ62

♠ AK63
♥ 1093
♦ Q72
♣ Q87

♠ 10987
♥ AKJ8
♦ 5
♣ 9543

Board (12) Av: NS=-380

N-S	E-W	Contract	N-S	E-W	IMP
1	3	3NT W 4	430		-2
3	1	3NT W 4	430		-2
2	4	3NT W 4	430		-2
4	2	3NT W 4	430		-2
5	6	3NT E 5	460		-2
6	5	3NT W 3	400		-1
7	8	3NT W 4	430		-2
8	7	5C W-1	50		10
13	16	3NT E 4	430		-2
16	13	5C W-1	50		10
14	15	3NT W 4	430		-2
15	14	3NT W 4	430		-2

13

♠ 106
♥ K96
♦ 852
♣ K10854

♠ A72
♥ AQ
♦ AQJ10964
♣ J

♠ 9843
♥ J85
♦ K73
♣ Q63

♠ KQJ5
♥ 107432
♦
♣ A972

Board (13) Av: NS=-10

N-S	E-W	Contract	N-S	E-W	IMP
1	3	4D W 4	130		-3
3	1	5D W 5	600		-11
2	4	5D W-2	200		5
4	2	3D W 4	130		-3
5	6	5D W-1	100		3
6	5	3NT E 3	600		-11
7	8	3D W 3	110		-3
8	7	5D E-2	200		5
13	16	5D W-1	100		3
16	13	5D W-2	200		5
14	15	4Hx S 4	790		13
15	14	4D W-1	100		3

14

♠ 9864
♥ K6
♦ K102
♣ J876

♠ Q52
♥ QJ974
♦ Q83
♣ K4

♠ AKJ
♥ A8532
♦ 75
♣ 1095

♠ 1073
♥ 10
♦ AJ964
♣ AQ32

Board (14) Av: NS=-300

N-S	E-W	Contract	N-S	E-W	IMP
1	3	4H E 4	420		-3
3	1	4H E 4	420		-3
2	4	3H E 4	170		4
4	2	4H E 4	420		-3
5	6	5Cx N-2	300		0
6	5	4H E 4	420		-3
7	8	4H E-1	50		8
8	7	3H E 4	170		4
13	16	4H E 4	420		-3
16	13	4H E 4	420		-3
14	15	3H E 3	140		4
15	14	3H E 3	140		4

15

♠ A3
♥ Q98752
♦ J64
♣ A2

♠ QJ1042
♥
♦ K93
♣ KQ1095

♠ 875
♥ AK3
♦ A10852
♣ 87

♠ K96
♥ J1064
♦ Q7
♣ J643

Board (15) Av: NS=-270

N-S	E-W	Contract	N-S	E-W	IMP
1	4	4S W 4	420		-4
4	1	3H N-1	100		5
2	3	4S W 4	420		-4
3	2	4S W-1	50		8
5	7	4S W 4	420		-4
7	5	3NT E-3	150		9
6	8	4S W 4	420		-4
8	6	4S W 4	420		-4
9	10	4S W 4	420		-4
10	9	3S W 4	170		3
11	12	4S W-1	50		8
12	11	4S W 4	420		-4

16

♠ KJ87
♥ KJ92
♦ J103
♣ 74

♠ Q64
♥ Q10843
♦ 75
♣ KQ9

♠ A102
♥ A
♦ AQ9862
♣ A108

♠ 953
♥ 765
♦ K4
♣ J6532

Board (16) Av: NS=-630

N-S	E-W	Contract	N-S	E-W	IMP
1	4	3NT W 3	600		1
4	1	3NT E 5	660		-1
2	3	3NT E 5	660		-1
3	2	3NT E 5	660		-1
5	7	3NT E 4	630		0
7	5	3NT E 3	600		1
6	8	3NT E 4	630		0
8	6	3NT E 3	600		1
9	10	3NT E 4	630		0
10	9	3NT W 4	630		0
11	12	3NT E 3	600		1
12	11	3NT E 4	630		0

17

♠KQ109832
♥6
♦J106
♣Q6

♠75
♥KQ10942
♦A3
♣1083

♠A4
♥AJ8
♦952
♣AK972

♠J6
♥753
♦KQ874
♣J54

18

♠7
♥KJ76432
♦52
♣Q107

♠Q953
♥9
♦QJ1094
♣862

♠J1062
♥105
♦K86
♣AK95

♠AK84
♥AQ8
♦A73
♣J43

19

♠9873
♥K2
♦965
♣A864

♠K104
♥10964
♦8
♣K9732

♠J652
♥J5
♦AQ742
♣Q5

♠AQ
♥AQ873
♦KJ103
♣J10

20

♠AQ843
♥9872
♦K7
♣A2

♠J1062
♥A643
♦QJ43
♣4

♠975
♥QJ10
♦10862
♣Q65

♠K
♥K5
♦A95
♣KJ109873

Board (17) Av: NS=-400

N-S	E-W	Contract	N-S	E-W	IMP
1	4	4H	W 5	450	-2
4	1	4H	W 5	450	-2
2	3	3NT	E 4	430	-1
3	2	4H	W 5	450	-2
5	7	5H	W 5	450	-2
7	5	4Sx	N-2	300	3
6	8	3S	N-1	50	8
8	6	4H	E 6	480	-2
9	10	4H	W 5	450	-2
10	9	4H	W 5	450	-2
11	12	3S	N-1	50	8
12	11	6H	W 6	980	-11

Board (18) Av: NS=+650

N-S	E-W	Contract	N-S	E-W	IMP
1	4	4H	N 5	650	0
4	1	4H	N 5	650	0
2	3	4H	S 5	650	0
3	2	4H	N 5	650	0
5	7	4H	S 5	650	0
7	5	6H	N-1	100	-13
6	8	4H	N 5	650	0
8	6	4H	N 5	650	0
9	10	4H	N 5	650	0
10	9	4H	N 5	650	0
11	12	4H	N 5	650	0
12	11	4H	N 5	650	0

Board (19) Av: NS=+50

N-S	E-W	Contract	N-S	E-W	IMP
1	4	3NT	S-2	100	-4
4	1	2H	S 2	110	2
2	3	3NT	N-2	100	-4
3	2	2NT	S-1	50	-3
5	7	3NT	S 3	400	8
7	5	3H	S-1	50	-3
6	8	2H	S 2	110	2
8	6	3H	S-1	50	-3
9	10	2H	S 2	110	2
10	9	2H	S 4	170	3
11	12	2H	S 2	110	2
12	11	2H	S 2	110	2

Board (20) Av: NS=+560

N-S	E-W	Contract	N-S	E-W	IMP
1	4	3NT	S-2	200	-13
4	1	3NT	N 6	690	4
2	3	3NT	S 5	660	3
3	2	3NT	N 3	600	1
5	7	3NT	N 5	660	3
7	5	6C	S-1	100	-12
6	8	3NT	S 4	630	2
8	6	3NT	N 5	660	3
9	10	3NT	S 5	660	3
10	9	3NT	N 3	600	1
11	12	3NT	N 3	600	1
12	11	3NT	S 3	600	1

21

♠4
♥Q8
♦Q32
♣KQ87653

♠AJ62
♥K974
♦K76
♣109

♠1095
♥AJ103
♦AJ84
♣J4

♠KQ873
♥652
♦1095
♣A2

22

♠J963
♥J32
♦KJ532
♣3

♠AQ102
♥64
♦1098
♣AQ102

♠K7
♥AQ5
♦Q
♣J987654

♠854
♥K10987
♦A764
♣K

23

♠Q1096
♥754
♦Q102
♣K75

♠A843
♥AKJ82
♦94
♣A3

♠52
♥10963
♦A6
♣Q9864

♠KJ7
♥Q
♦KJ8753
♣J102

24

♠A1096
♥Q64
♦J2
♣K753

♠KQJ73
♥109
♦A97
♣962

♠54
♥AK83
♦K54
♣AJ108

♠82
♥J752
♦Q10863
♣Q4

Board (21) Av: NS=-140

N-S	E-W	Contract	N-S	E-W	IMP
1	4	3C	N-1	100	1
4	1	4H	E-1	50	5
2	3	3H	E 4	170	-1
3	2	3Cx	N-2	500	-8
5	7	2D	E 2	90	2
7	5	3H	W 4	170	-1
6	8	4H	E 4	420	-7
8	6	4H	W-1	50	5
9	10	3C	N-2	200	-2
10	9	3H	E 4	170	-1
11	12	4H	E-1	50	5
12	11	2S	W 3	140	0

Board (22) Av: NS=-580

N-S	E-W	Contract	N-S	E-W	IMP
5	8	3NT	E 7	720	-4
8	5	3C	E 6	170	9
6	7	5C	E 5	600	-1
7	6	3NT	E 6	690	-3
9	11	3NT	E 6	690	-3
11	9	5C	E 5	600	-1
10	12	3NT	E 7	720	-4
12	10	3NT	E 7	720	-4
13	14	3NT	E 7	720	-4
14	13	4C	E 7	190	9
15	16	5C	E 7	640	-2
16	15	3C	E 7	190	9

Board (23) Av: NS=-630

N-S	E-W	Contract	N-S	E-W	IMP
5	8	4H	W 4	620	0
8	5	4H	W 5	650	-1
6	7	4H	W 5	650	-1
7	6	4H	W 5	650	-1
9	11	4H	W 5	650	-1
11	9	3H	W 6	230	9
10	12	4H	W 4	620	0
12	10	4H	W 4	620	0
13	14	4H	W 5	650	-1
14	13	4H	W 4	620	0
15	16	4H	E 4	620	0
16	15	4H	W 4	620	0

Board (24) Av: NS=-180

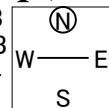
N-S	E-W	Contract	N-S	E-W	IMP
5	8	4S	W 4	420	-6
8	5	3NT	E-2	100	7
6	7	3NT	E-1	50	6
7	6	3NT	E 3	400	-6
9	11	3NT	E 3	400	-6
11	9	3NT	E-2	100	7
10	12	3NT	E-2	100	7
12	10	3NT	E-2	100	7
13	14	2C	E 3	110	2
14	13	3NT	E 3	400	-6
15	16	3NT	E 3	400	-6
16	15	3NT	E 3	400	-6

25

♠ 1062
♥ A7
♦ 532
♣ Q10652

♠ AKQ8
♥ K108
♦ AQJ8
♣ A4

♠ 95
♥ J652
♦ K97
♣ K873



Board (25) Av: NS=-630

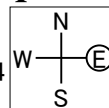
N-S	E-W	Contract	N-S	E-W	IMP
5	8	4S E 5		650	-1
8	5	4S E 4		620	0
6	7	4S E 4		620	0
7	6	3NT E 3		600	1
9	11	4S E 5		650	-1
11	9	4S E 4		620	0
10	12	4S E 5		650	-1
12	10	4S E 4		620	0
13	14	4S E 5		650	-1
14	13	4S E 5		650	-1
15	16	6NT E-1 100			12
16	15	4S E 5		650	-1

26

♠ 1083
♥ 10985
♦ AQ103
♣ 108

♠ K94
♥ QJ42
♦ J62
♣ KJ3

♠ AJ752
♥ A76
♦ 8
♣ A754



Board (26) Av: NS=+110

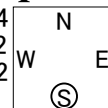
N-S	E-W	Contract	N-S	E-W	IMP
5	8	2S S 3 140			1
8	5	2S S 2 110			0
6	7	2S S 2 110			0
7	6	2S S 2 110			0
9	11	4D W-2 200			3
11	9	2S S 2 110			0
10	12	3S S-2 200			-7
12	10	2S S 3 140			1
13	14	2S S 3 140			1
14	13	3C E-2 200			3
15	16	2S S 2 110			0
16	15	2S S-1 100			-5

27

♠ AQ8
♥ AQ74
♦ 5
♣ 109643

♠ 9763
♥ J1083
♦ K97
♣ K2

♠ K52
♥ K
♦ AQ1064
♣ QJ87



Board (27) Av: NS=+440

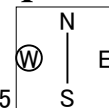
N-S	E-W	Contract	N-S	E-W	IMP
5	8	3NT N 5 460			1
8	5	3NT S 5 460			1
6	7	3NT N 5 460			1
7	6	3NT S 4 430			0
9	11	3NT N 5 460			1
11	9	3NT S 4 430			0
10	12	3NT N 5 460			1
12	10	3NT S 4 430			0
13	14	3NT S 4 430			0
14	13	6C S-1 50			-10
15	16	3NT N 4 430			0
16	15	3NT S 4 430			0

28

♠ J1093
♥ 107
♦ 842
♣ 7632

♠ AKQ5
♥ K95
♦ Q9
♣ A1084

♠ 72
♥ QJ862
♦ K10763
♣ Q



Board (28) Av: NS=-310

N-S	E-W	Contract	N-S	E-W	IMP
5	8	6NT W 6 990			-12
8	5	3NT W 6 490			-5
6	7	3NT W 5 460			-4
7	6	6NT W-1 50			8
9	11	3NT W 5 460			-4
11	9	6S E 6 980			-12
10	12	4NT W 6 490			-5
12	10	6NT W-1 50			8
13	14	6NT W-1 50			8
14	13	4NT W 5 460			-4
15	16	7NT W-2 100			9
16	15	6NT W-1 50			8