

全日本地域対抗戦主権決勝 Flt.D SRR Session 1 Flight D 2016年7月23日(土)

1

♠A96
♥932
♦62
♣K10432

♠532
♥Q85
♦AQ103
♣975

♠874
♥1076
♦KJ84
♣QJ8

♠KQJ10
♥AKJ4
♦975
♣A6

Board (1) Av: NS=+240

N-S	E-W	Contract	N-S	E-W	IMP
3	8	1NT S 3	150		-3
5	13	3NT N 3	400		4
7	4	3NT N-1		50	-7
9	12	3NT S 3	400		4
11	10	3NT N-1		50	-7
14	6	3NT N 5	460		6
15	17	3NT N 4	430		5
18	16	2NT N 2	120		-3

2

♠J9543
♥AQ765
♦8
♣Q6

♠76
♥1094
♦Q762
♣A982

♠A10
♥K832
♦KJ543
♣K10

♠KQ82
♥J
♦A109
♣J7543

Board (2) Av: NS=-100

N-S	E-W	Contract	N-S	E-W	IMP
3	8	2D E 2		90	0
5	13	3S S 3	140		6
7	4	1NT W 2		120	-1
9	12	2D E 3		110	0
11	10	2D E 3		110	0
14	6	4S N-1		100	0
15	17	1NT W 1		90	0
18	16	1NT W 1		90	0

3

♠764
♥A83
♦65
♣KQ1094

♠K1093
♥J105
♦93
♣7532

♠QJ8
♥KQ7642
♦104
♣J8

♠A52
♥9
♦AKQJ872
♣AK

Board (3) Av: NS=+490

N-S	E-W	Contract	N-S	E-W	IMP
3	8	6D N 7	940		10
5	13	5D S 7	440		-2
7	4	3NT N 7	520		1
9	12	3NT N 7	520		1
11	10	5D S 7	440		-2
14	6	3NT N 7	520		1
15	17	5D S 7	440		-2
18	16	3NT N 7	520		1

4

♠Q9
♥K973
♦QJ2
♣AQ72

♠AJ105
♥6
♦943
♣98654

♠763
♥QJ852
♦A765
♣J

♠K842
♥A104
♦K108
♣K103

Board (4) Av: NS=+630

N-S	E-W	Contract	N-S	E-W	IMP
1	15	3NT N 5	660		1
5	10	3NT N 4	630		0
7	12	3NT N 4	630		0
9	6	3NT N 4	630		0
11	8	3NT N 3	600		-1
13	17	3NT N 4	630		0
16	2	3NT N 4	630		0
18	14	3NT N 3	600		-1

5

♠K983
♥AK
♦K53
♣Q987

♠AQ1052
♥84
♦A942
♣A10

♠4
♥QJ1075
♦J107
♣J542

♠J76
♥9632
♦Q86
♣K63

Board (5) Av: NS=-30

N-S	E-W	Contract	N-S	E-W	IMP
1	15	1NT N-2		200	-5
5	10	1NT N-1		100	-2
7	12	3D W-1	50		2
9	6	3D W-1	50		2
11	8	1NT N-1		100	-2
13	17	2S W-2	100		4
16	2	2S W-1	50		2
18	14	1NT N-1		100	-2

6

♠A10854
♥A3
♦K3
♣A986

♠K62
♥KJ
♦AQJ7
♣10532

♠J7
♥854
♦10542
♣KQJ7

♠Q93
♥Q109762
♦986
♣4

Board (6) Av: NS=+130

N-S	E-W	Contract	N-S	E-W	IMP
1	15	2C W 2		90	-6
5	10	3S N 4	170		1
7	12	3S N 3	140		0
9	6	2S N 3	140		0
11	8	2S N 3	140		0
13	17	3H S 4	170		1
16	2	1NT E-1	100		-1
18	14	1NT W-1	100		-1

7

♠J76432
♥KJ10
♦103
♣J9

♠985
♥87
♦J84
♣108542

♠K10
♥A653
♦KQ976
♣K6

♠AQ
♥Q942
♦A52
♣AQ73

Board (7) Av: NS=+280

N-S	E-W	Contract	N-S	E-W	IMP
1	12	3NT S-1		100	-9
3	17	4S N 6	680		9
7	10	4S N 5	650		9
9	8	2NT S-1		100	-9
11	2	3NT S-1		100	-9
13	15	4S N 5	650		9
16	14	2NT S-2		200	-10
18	4	4S N 5	650		9

8

♠A972
♥AK972
♦1042
♣4

♠Q53
♥Q53
♦K5
♣AJ1086

♠KJ10
♥J8
♦Q83
♣KQ953

♠864
♥1064
♦AJ976
♣72

Board (8) Av: NS=-80

N-S	E-W	Contract	N-S	E-W	IMP
1	12	3C W 3		110	-1
3	17	3C W 3		110	-1
7	10	3C W 3		110	-1
9	8	4C W-1	50		4
11	2	3H N 4	170		6
13	15	3C E 3		110	-1
16	14	3C W 3		110	-1
18	4	3NT W 3		400	-8

全日本地域対抗戦主権決勝 Flt.D SRR Session 1 Flight D 2016年7月23日(土)

9

♠AJ52
♥Q1087
♦QJ10
♣96

♠K
♥95
♦AK86
♣KQJ752

♠10943
♥AJ42
♦97
♣A103

♠Q876
♥K63
♦5432
♣84

Board (9) Av: NS=-530

N-S	E-W	Contract	N-S	E-W	IMP
1	12	3NT E 3		600	-2
3	17	3C W 5		150	9
7	10	5C W 5		600	-2
9	8	5C W 6		620	-3
11	2	5C W 6		620	-3
13	15	2C W 5		150	9
16	14	3NT E 4		630	-3
18	4	5C W 5		600	-2

10

♠108
♥J93
♦J6532
♣1092

♠A4
♥107654
♦AQ
♣AQJ5

♠KJ532
♥8
♦K10984
♣K7

♠Q976
♥AKQ2
♦7
♣8643

Board (10) Av: NS=-410

N-S	E-W	Contract	N-S	E-W	IMP
1	11	3NT W 3		600	-5
3	5	5S E-1 100			11
6	4	4NT E-1 100			11
9	14	3NT W 3		600	-5
12	2	4NT W 4		630	-6
13	10	3NT W 3		600	-5
15	18	2NT E 2		120	7
17	16	3NT E 4		630	-6

11

♠AK74
♥10432
♦KQ3
♣103

♠Q82
♥QJ
♦J8752
♣QJ4

♠9653
♥A86
♦64
♣AK72

♠J10
♥K975
♦A109
♣9865

Board (11) Av: NS=+110

N-S	E-W	Contract	N-S	E-W	IMP
1	11	2H S 3 140			1
3	5	2H S 3 140			1
6	4	2H S 2 110			0
9	14	2H S 2 110			0
12	2	2S E-1 50			-2
13	10	2H N 3 140			1
15	18	2H S 2 110			0
17	16	2H S-1 50			-4

12

♠842
♥K7
♦AJ9
♣K9853

♠QJ65
♥J632
♦5
♣AQJ6

♠AK7
♥1084
♦K1062
♣742

♠1093
♥AQ95
♦Q8743
♣10

Board (12) Av: NS=+10

N-S	E-W	Contract	N-S	E-W	IMP
1	11	1NTxw 1 180			-5
3	5	Passout			0
6	4	1NT E-1 50			1
9	14	Passout			0
12	2	1NT E-1 50			1
13	10	Passout			0
15	18	Passout			0
17	16	Passout			0

13

♠Q752
♥AQJ98
♦J
♣A95

♠64
♥107652
♦K842
♣K4

♠K98
♥43
♦Q73
♣QJ1073

♠AJ103
♥K
♦A10965
♣862

Board (13) Av: NS=+650

N-S	E-W	Contract	N-S	E-W	IMP
1	5	4S S 6 680			1
3	7	4S S 6 680			1
6	2	4S S 4 620			-1
8	4	4S S 5 650			0
11	16	4S S 5 650			0
13	18	4S S 4 620			-1
15	12	3NT N 4 630			-1
17	14	4S S 5 650			0

14

♠98765
♥52
♦AQJ4
♣J9

♠1042
♥K10973
♦987
♣Q8

♠AKQ
♥AQ6
♦1063
♣10763

♠J3
♥J84
♦K52
♣AK542

Board (14) Av: NS=-150

N-S	E-W	Contract	N-S	E-W	IMP
1	5	2H E 2 110			1
3	7	2H E 4 170			-1
6	2	1NT E 4 180			-1
8	4	2H E 3 140			0
11	16	2H E 3 140			0
13	18	1NT E 3 150			0
15	12	2H E 3 140			0
17	14	1NT E 4 180			-1

15

♠753
♥J654
♦K432
♣A6

♠A1094
♥K873
♦A7
♣Q75

♠KQ82
♥AQ2
♦5
♣K10982

♠J6
♥109
♦QJ10986
♣J43

Board (15) Av: NS=-330

N-S	E-W	Contract	N-S	E-W	IMP
1	5	4S E 5 450			-3
3	7	6S E-2 100			10
6	2	4S E 5 450			-3
8	4	6S E-1 50			9
11	16	3S E 5 200			4
13	18	4S E 6 480			-4
15	12	4S E 5 450			-3
17	14	5S E 5 450			-3

16

♠983
♥AKJ7
♦AQ6
♣J107

♠KQ764
♥4
♦J943
♣Q92

♠5
♥9865
♦K1052
♣A654

♠AJ102
♥Q1032
♦87
♣K83

Board (16) Av: NS=-100

N-S	E-W	Contract	N-S	E-W	IMP
1	3	4H N-2 100			0
4	2	4H N-3 150			-2
5	9	4H N-2 100			0
7	18	4H N-1 50			2
10	6	4H N-2 100			0
13	16	4H N-3 150			-2
15	14	4H N-2 100			0
17	8	4H N-1 50			2

17 ♠875432
♥A9543
♦Q
♣J

♠A ♠KQ109
♥Q8 ♥K2
♦AK1096432 ♦87
♣K6 ♣Q10972

♠J6
♥J1076
♦J5
♣A8543

Board (17) Av: NS=-400

N-S	E-W	Contract	N-S	E-W	IMP
1	3	5D	W-1	50	10
4	2	3NT	W	6	490
5	9	5D	W	5	400
7	18	3NT	E	4	430
10	6	4D	W	6	170
13	16	3NT	E	6	490
15	14	3NT	E	4	430
17	8	3NT	E	5	460

18 ♠Q9432
♥A7
♦83
♣Q973

♠K108765
♥62
♦KQ
♣1042

♠AJ
♥K9854
♦A654
♣86

Board (18) Av: NS=+330

N-S	E-W	Contract	N-S	E-W	IMP
1	3	4S	W-3	150	-5
4	2	4S	E-3	150	-5
5	9	4H	S	5	650
7	18	5H	S	5	650
10	6	4S	W-3	150	-5
13	16	4H	S	5	650
15	14	3H	S	5	200
17	8	3S	E-2	100	-6

19 ♠832
♥AJ
♦1076
♣KQ982

♠AQ4 ♠K976
♥10654 ♥Q98
♦82 ♦K543
♣J1073 ♣64

♠J105
♥K732
♦AQJ9
♣A5

Board (19) Av: NS=+350

N-S	E-W	Contract	N-S	E-W	IMP
1	16	3NT	S	6	490
3	6	3NT	S	3	400
5	4	3NT	S	4	430
7	17	3NT	S-2	100	-10
9	11	3NT	S	5	460
12	10	3NT	S	3	400
15	2	3NT	S	4	430
18	8	3NT	S-1	50	-9

20 ♠J843
♥J73
♦QJ75
♣J9

♠A72 ♠965
♥8654 ♥Q9
♦A ♦10984
♣AKQ87 ♣10643

♠KQ10
♥AK102
♦K632
♣52

Board (20) Av: NS=+10

N-S	E-W	Contract	N-S	E-W	IMP
1	16	2C	W	3	110
3	6	4D	S-1	100	-3
5	4	3S	N	4	170
7	17	2D	N	3	110
9	11	2S	N-3	300	-7
12	10	2S	N	3	140
15	2	2S	N	3	140
18	8	2C	W	3	110

21 ♠AJ765
♥8
♦AKJ82
♣K6

♠Q1084 ♠K
♥953 ♥AQJ1042
♦Q1095 ♦743
♣32 ♣QJ10

♠932
♥K76
♦6
♣A98754

Board (21) Av: NS=+430

N-S	E-W	Contract	N-S	E-W	IMP
1	16	4S	N	4	620
3	6	4Sx	N-2	500	-14
5	4	3S	N	4	170
7	17	4S	N	4	620
9	11	4Hx	E-4	800	9
12	10	4S	N	4	620
15	2	4S	N	4	620
18	8	4S	N-1	100	-11

22 ♠96542
♥K9
♦73
♣AJ73

♠KQ103 ♠A87
♥J87 ♥AQ10653
♦K642 ♦QJ9
♣Q10 ♣9

♠J
♥42
♦A1085
♣K86542

Board (22) Av: NS=-670

N-S	E-W	Contract	N-S	E-W	IMP
1	6	5H	E	5	650
3	18	4H	E	6	680
5	2	4H	E	6	680
7	11	5H	E	5	650
9	13	4H	E	6	680
12	8	4H	E	5	650
14	10	5Cx	S-2	300	9
17	4	4H	E	6	680

23 ♠J8753
♥Q4
♦QJ98
♣74

♠Q6 ♠K104
♥J97 ♥K108653
♦753 ♦A4
♣A9852 ♣Q6

♠A92
♥A2
♦K1062
♣KJ103

Board (23) Av: NS=+90

N-S	E-W	Contract	N-S	E-W	IMP
1	6	2S	S	3	140
3	18	2S	S	2	110
5	2	2S	S	3	140
7	11	2S	S	2	110
9	13	3S	N	3	140
12	8	3S	S-1	100	-5
14	10	3H	E	4	170
17	4	2S	S	2	110

24 ♠A432
♥942
♦1082
♣QJ9

♠9876 ♠QJ105
♥K653 ♥AQJ108
♦97 ♦AQJ4
♣A63 ♣8

♠K
♥Q7
♦K653
♣K107542

Board (24) Av: NS=-50

N-S	E-W	Contract	N-S	E-W	IMP
1	6	3H	E-1	50	3
3	18	4S	E	4	420
5	2	1NT	E-1	50	3
7	11	3H	E	3	140
9	13	3S	E	4	170
12	8	3H	E	3	140
14	10	4H	E-1	50	3
17	4	4H	W-1	50	3

25

♠72
♥K109852
♦K96
♣63

♠AKQ964
♥A
♦Q854
♣K9

♠J5
♥QJ
♦AJ107
♣A8542

W E
S

♠1083
♥7643
♦32
♣QJ107

Board (25) Av: NS=-920

N-S	E-W	Contract	N-S	E-W	IMP
1	4	5S	E 6	680	6
3	2	6S	E 6	1430	-11
5	14	6D	E 6	1370	-10
7	9	4S	E 6	680	6
10	8	3NT	E 6	690	6
11	15	4S	E 6	680	6
13	6	5C	W-1	100	14
16	12	6S	E 6	1430	-11

26

♠543
♥K542
♦Q8
♣KJ43

♠K107
♥A963
♦A
♣A10985

♠J9
♥QJ
♦J97643
♣Q62

W E
S

♠AQ862
♥1087
♦K1052
♣7

Board (26) Av: NS=-70

N-S	E-W	Contract	N-S	E-W	IMP
1	4	1NT	W-1	100	5
3	2	2D	E-2	200	7
5	14	2D	E 2	90	-1
7	9	1NT	W 2	120	-2
10	8	2S	S-2	200	-4
11	15	2D	E 2	90	-1
13	6	1NT	W 1	90	-1
16	12	2S	S-1	100	-1

27

♠K86
♥Q8632
♦9
♣A1083

♠A74
♥54
♦AK742
♣976

♠1052
♥K9
♦QJ1083
♣QJ4

W E
S

♠QJ93
♥AJ107
♦65
♣K52

Board (27) Av: NS=+50

N-S	E-W	Contract	N-S	E-W	IMP
1	4	2H	N 3	140	3
3	2	Passout			-2
5	14	Passout			-2
7	9	Passout			-2
10	8	Passout			-2
11	15	3H	N 4	170	3
13	6	3H	N 3	140	3
16	12	Passout			-2

1

♠KJ32
♥Q109
♦62
♣A975

♠Q9864 (N)
♥AJ
♦J83
♣J84

♠A75
♥8765
♦AK54
♣Q10

♠10
♥K432
♦Q1097
♣K632

Board (1) Av: NS=+50

N-S	E-W	Contract	N-S	E-W	IMP
3	13	1NT E-1	50		0
5	8	1NT E 4		180	-6
7	6	1NT E-3	150		3
9	16	2S W-1	50		0
11	17	1NT E 1		90	-4
14	4	1NT E-2	100		2
15	10	1NT E-2	100		2
18	12	2S W-2	100		2

2

♠J8
♥AKQ953
♦104
♣A43

♠Q972 (N)
♥J10764
♦Q7
♣Q9

♠A1065
♥2
♦K653
♣10872

♠K43
♥8
♦AJ982
♣KJ65

Board (2) Av: NS=-80

N-S	E-W	Contract	N-S	E-W	IMP
3	13	3NT S-1		100	-1
5	8	3NT S-2		200	-3
7	6	3NT S-1		100	-1
9	16	2H N 3	140		6
11	17	5H N-2		200	-3
14	4	4H N 4	620		12
15	10	4H N-1		100	-1
18	12	3NT S-1		100	-1

3

♠J10842
♥AJ
♦952
♣1032

♠AQ763 (N)
♥1075
♦10
♣AK65

♠5
♥8642
♦AQ8643
♣J8

♠K9
♥KQ93
♦KJ7
♣Q974

Board (3) Av: NS=+90

N-S	E-W	Contract	N-S	E-W	IMP
3	13	1Sx W 1		160	-6
5	8	1NT E-2	200		3
7	6	1S W 2		110	-5
9	16	1NT S 3	150		2
11	17	1NT N 1		90	0
14	4	1NT N 2	120		1
15	10	1S W-2	200		3
18	12	1NT N 1		90	0

4

♠10
♥J93
♦Q742
♣87632

♠J2 (N)
♥K8652
♦AKJ
♣QJ10

♠AK76543
♥Q104
♦3
♣A4

♠Q98
♥A7
♦109865
♣K95

Board (4) Av: NS=-150

N-S	E-W	Contract	N-S	E-W	IMP
1	9	6S W-1	100		6
5	16	6S W-2	200		8
7	13	6S E-1	100		6
10	2	4S W 5		650	-11
11	18	4H W 6		680	-11
14	8	5S E-1	100		6
15	6	4H W 4		620	-10
17	12	5S W-1	100		6

5

♠942
♥
♦AK109872
♣KQ10

♠A1087 (N)
♥A653
♦J4
♣J76

♠KQJ
♥KQ74
♦Q3
♣A532

♠653
♥J10982
♦65
♣984

Board (5) Av: NS=+120

N-S	E-W	Contract	N-S	E-W	IMP
1	9	3H W-2	100		-1
5	16	3H W-2	100		-1
7	13	4H W-3	150		1
10	2	4H W-1	50		-2
11	18	4H W-3	150		1
14	8	4H W-3	150		1
15	6	5DX N-2		500	-12
17	12	4H E-3	150		1

6

♠106
♥QJ65
♦A10642
♣J9

♠A (N)
♥K42
♦KJ853
♣AK32

♠K742
♥987
♦7
♣108754

♠QJ9853
♥A103
♦Q9
♣Q6

Board (6) Av: NS=+30

N-S	E-W	Contract	N-S	E-W	IMP
1	9	1S S 2	110		2
5	16	2S S-1		50	-2
7	13	3S S-2		100	-4
10	2	3D W-3	300		7
11	18	2S S 2	110		2
14	8	2NT W 2		120	-4
15	6	3D W-2	200		5
17	12	3S S-2		100	-4

7

♠A6
♥10543
♦KQ1095
♣A5

♠Q1084 (N)
♥J982
♦864
♣K9

♠K97
♥KQ6
♦J32
♣J632

♠J532
♥A7
♦A7
♣Q10874

Board (7) Av: NS=0

N-S	E-W	Contract	N-S	E-W	IMP
1	18	2NT N 3	150		4
3	11	3NT S-3		300	-7
7	14	3NT S-1		100	-3
9	15	3NT N 5	660		12
12	4	2D N 3	110		3
13	8	3NT S-1		100	-3
16	10	2NT N 2	120		3
17	2	1NT N-2		200	-5

8

♠8543
♥62
♦107652
♣J8

♠K62 (N)
♥QJ3
♦AQ
♣AKQ73

♠10
♥AK974
♦K83
♣10942

♠AQJ97
♥1085
♦J94
♣65

Board (8) Av: NS=-990

N-S	E-W	Contract	N-S	E-W	IMP
1	18	6H W 7		1010	-1
3	11	6H W 6		980	0
7	14	6C W 6		920	2
9	15	5H W 7		510	10
12	4	6H W 7		1010	-1
13	8	6H W 7		1010	-1
16	10	6H W 6		980	0
17	2	6H W 7		1010	-1

9

♠A4
♥J63
♦KQ4
♣K7632

♠KQ107 (N)
♥8742
♦J3
♣J84

♠986
♥KQ5
♦A85
♣A1095

♠J532
♥A109
♦109762
♣Q

Board (9) Av: NS=+90

N-S	E-W	Contract	N-S	E-W	IMP
1	18	1NT N 1	90		0
3	11	1NT N 1	90		0
7	14	3D S 3	110		1
9	15	1NT N 1	90		0
12	4	1NT N 1	90		0
13	8	1NT N 2	120		1
16	10	1NT N 1	90		0
17	2	1NT N-1		50	-4

10

♠KQ42
♥K876
♦AQJ
♣K3

♠76 (N)
♥J4
♦632
♣AQ6542

♠1085
♥Q92
♦K874
♣1098

♠AJ93
♥A1053
♦1095
♣J7

Board (10) Av: NS=+500

N-S	E-W	Contract	N-S	E-W	IMP
1	10	4H S 4	620		3
3	16	4H S-1		100	-12
5	17	5H S 4	620		3
9	2	4H S 4	620		3
11	13	4H S 4	620		3
14	12	4H S 4	620		3
15	4	4H S-1		100	-12
18	6	4H S 4	620		3

11

♠K976
♥A83
♦932
♣432

♠J1032 (N)
♥J6
♦AK7
♣KJ85

♠A4
♥109542
♦Q84
♣Q97

♠85
♥KQ7
♦J1065
♣A106

Board (11) Av: NS=-70

N-S	E-W	Contract	N-S	E-W	IMP
1	10	2S N-2		100	-1
3	16	1NT S-1		50	1
5	17	1NT S-1		50	1
9	2	1NT S-2		100	-1
11	13	1NT S-1		50	1
14	12	1NT S-1		50	1
15	4	1NT S 1		90	4
18	6	2H W 3		140	-2

12

♠A109
♥A975
♦QJ7
♣A92

♠KQJ64 (N)
♥
♦K643
♣J1053

♠73
♥J10632
♦1085
♣864

♠852
♥KQ84
♦A92
♣KQ7

Board (12) Av: NS=+90

N-S	E-W	Contract	N-S	E-W	IMP
1	10	3NT N 4	630		11
3	16	6H N-3		300	-9
5	17	4H N-2		200	-7
9	2	4H N-2		200	-7
11	13	4H S-1		100	-5
14	12	3NT N 4	630		11
15	4	4H N-2		200	-7
18	6	4H N 4	620		11

13

♠K
♥AK10963
♦1032
♣K82

♠74
♥Q752
♦AQ109653
♣AQ109653

♠AJ8
♥J84
♦98765
♣74

♠Q1096532
♥AKQJ4
♣J

Board (13) Av: NS=-100

N-S	E-W	Contract	N-S	E-W	IMP
1	13	4S	S-1	100	0
3	12	4S	S-1	100	0
5	18	5D	S-1	100	0
7	15	4S	S-1	100	0
11	4	4S	S-1	100	0
14	2	4S	S-1	100	0
16	8	2S	S 4	170	7
17	6	4S	S-1	100	0

14

♠J542
♥642
♦J102
♣K83

♠93
♥J98
♦AKQ64
♣QJ2

♠K876
♥AKQ7
♦73
♣A75

♠AQ10
♥1053
♦985
♣10964

Board (14) Av: NS=-460

N-S	E-W	Contract	N-S	E-W	IMP
1	13	3NT	E 5	460	0
3	12	3NT	E 5	460	0
5	18	3NT	E 5	460	0
7	15	3NT	E 5	460	0
11	4	3NT	E 5	460	0
14	2	3NT	E 5	460	0
16	8	6NT	E-1	50	11
17	6	3NT	E 5	460	0

15

♠J1073
♥J3
♦K
♣Q87532

♠854
♥A9765
♦AQ
♣KJ4

♠KQ
♥KQ2
♦10965432
♣A

♠A962
♥1084
♦J87
♣1096

Board (15) Av: NS=-180

N-S	E-W	Contract	N-S	E-W	IMP
1	13	4H	W 4	420	-6
3	12	4H	W-1	50	6
5	18	6H	W-3	150	8
7	15	4H	W 4	420	-6
11	4	6H	W-2	100	7
14	2	4H	W 5	450	-7
16	8	4H	W-1	50	6
17	6	4H	W 4	420	-6

16

♠AJ1074
♥AKJ
♦AJ765
♣

♠9865
♥63
♦K104
♣K1098

♠97542
♥98
♦AQJ732
♣

♠KQ32
♥Q108
♦Q32
♣654

Board (16) Av: NS=+460

N-S	E-W	Contract	N-S	E-W	IMP
1	14	4S	N 6	480	1
3	15	5S	N 5	450	0
5	7	4S	N 6	480	1
8	6	5S	N 6	480	1
9	18	4S	N 5	450	0
13	2	5S	N-1	50	-11
16	4	4S	N 6	480	1
17	10	4S	N 4	420	-1

17

♠92
♥J842
♦84
♣Q10642

♠753
♥QJ1053
♦J9875
♣

♠J1084
♥Q97
♦K972
♣AK

♠AKQ6
♥AK10653
♦A6
♣3

Board (17) Av: NS=+400

N-S	E-W	Contract	N-S	E-W	IMP
1	14	5Dx	E-3	500	3
3	15	4H	S 6	480	2
5	7	3H	S 5	200	-5
8	6	6Dx	E-4	800	9
9	18	3H	S 5	200	-5
13	2	4H	S 6	480	2
16	4	5H	S 5	450	2
17	10	5Dx	W-2	300	-3

18

♠A109
♥AKJ7
♦J92
♣A92

♠QJ52
♥10984
♦87
♣QJ7

♠764
♥65
♦KQ5
♣K8543

♠K83
♥Q32
♦A10643
♣106

Board (18) Av: NS=+290

N-S	E-W	Contract	N-S	E-W	IMP
1	14	3NT	N-1	100	-9
3	15	3NT	N 3	600	7
5	7	1NT	N 6	240	-2
8	6	3NT	N 6	690	9
9	18	1NT	S 5	210	-2
13	2	3NT	N-1	100	-9
16	4	3NT	N 6	690	9
17	10	1NT	N 2	120	-5

19

♠A
♥Q
♦AQ8765
♣KQJ92

♠Q93
♥AJ1098
♦10
♣A764

♠K85
♥7652
♦J9432
♣5

♠J107642
♥K43
♦K
♣1083

Board (19) Av: NS=+10

N-S	E-W	Contract	N-S	E-W	IMP
1	17	5C	N 5	400	9
3	10	4C	N 4	130	3
5	11	5Cx	N-1	100	-3
7	16	5C	N-1	50	-2
9	4	3C	N-1	50	-2
12	6	4D	N-1	50	-2
15	8	4D	N-1	50	-2
18	2	3C	N 5	150	4

20

♠Q1065
♥A109
♦Q97
♣765

♠3
♥J32
♦AK63
♣KQ983

♠AKJ9872
♥Q4
♦54
♣A2

♠4
♥K8765
♦J1082
♣J104

Board (20) Av: NS=-470

N-S	E-W	Contract	N-S	E-W	IMP
1	17	4S	E 6	680	-5
3	10	4S	E 6	680	-5
5	11	4S	E 6	680	-5
7	16	4S	E-1	100	11
9	4	4S	E 6	680	-5
12	6	4S	E-1	100	11
15	8	3S	E 5	200	7
18	2	4S	E 6	680	-5

21

♠AK54
♥75
♦J9
♣AQJ94

♠J97
♥K963
♦542
♣763

♠832
♥QJ84
♦A87
♣K52

♠Q106
♥A102
♦KQ1063
♣108

Board (21) Av: NS=+250

N-S	E-W	Contract	N-S	E-W	IMP
1	17	3NT	S 4	630	9
3	10	3NT	S-1	100	-8
5	11	3NT	S 3	600	8
7	16	3NT	S 3	600	8
9	4	3NT	S 3	600	8
12	6	3NT	S-1	100	-8
15	8	3NT	S-1	100	-8
18	2	3NT	S-1	100	-8

22

♠Q107
♥A105
♦J10864
♣K9

♠985
♥K98732
♦K3
♣84

♠AK2
♥J64
♦AQ95
♣J32

♠J643
♥Q
♦72
♣AQ10765

Board (22) Av: NS=-100

N-S	E-W	Contract	N-S	E-W	IMP
1	7	2H	E 3	140	-1
3	14	3C	S 3	110	5
5	12	2H	E 2	110	0
8	2	4H	E 4	620	-11
9	17	2H	E 3	140	-1
11	6	4H	E-1	100	5
13	4	3H	E 3	140	-1
18	10	2H	E 3	140	-1

23

♠52
♥AJ2
♦743
♣Q10982

♠Q43
♥KQ76
♦K98
♣K53

♠KJ987
♥853
♦A652
♣J

♠A106
♥1094
♦QJ10
♣A764

Board (23) Av: NS=-110

N-S	E-W	Contract	N-S	E-W	IMP
1	7	1NT	W 1	90	1
3	14	1NT	W 2	120	0
5	12	4S	E-1	100	5
8	2	1NT	W 2	120	0
9	17	2S	E 3	140	-1
11	6	1NT	W 2	120	0
13	4	1NT	W 1	90	1
18	10	2S	E 2	110	0

24

♠1053
♥K83
♦AQ5
♣Q942

♠A964
♥QJ2
♦J7
♣KJ107

♠KQJ82
♥97
♦K103
♣A63

♠7
♥A10654
♦98642
♣85

Board (24) Av: NS=-340

N-S	E-W	Contract	N-S	E-W	IMP
1	7	4S	E 4	420	-2
3	14	4S	E 4	420	-2
5	12	4S	E 4	420	-2
8	2	4S	E-1	50	9
9	17	4S	E 4	420	-2
11	6	4S	E-1	50	9
13	4	4S	E 4	420	-2
18	10	4S	E 4	420	-2

25

♠ 102
 ♠ AK942
 ♠ 952
 ♠ Q84

♠ AKQJ76
 ♠ 73
 ♠ K3
 ♠ 1052

♠ 853
 ♠ QJ1065
 ♠ AJ10
 ♠ J6

♠ 94
 ♠ 8
 ♠ Q8764
 ♠ AK973



Board (25) Av: NS=-140

N-S	E-W	Contract	N-S	E-W	IMP
1	8	3S	W 3	140	0
3	9	4C	S-2	100	1
5	15	4D	S-2	100	1
7	2	2S	W 4	170	-1
10	4	3S	W 5	200	-2
11	14	2S	W 4	170	-1
13	12	2S	W 3	140	0
16	6	3S	W 3	140	0

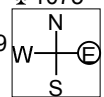
26

♠ K1064
 ♠ J5
 ♠ J432
 ♠ 1075

♠ A95
 ♠ AKQ9
 ♠ A85
 ♠ A92

♠ Q7
 ♠ 76432
 ♠ 1076
 ♠ K63

♠ J832
 ♠ 108
 ♠ KQ9
 ♠ QJ84



Board (26) Av: NS=-550

N-S	E-W	Contract	N-S	E-W	IMP
1	8	3H	W 4	170	9
3	9	4H	W 4	620	-2
5	15	4H	W 4	620	-2
7	2	4H	W 4	620	-2
10	4	4H	W 4	620	-2
11	14	3NT	W 4	630	-2
13	12	4H	W 4	620	-2
16	6	2NT	W 4	180	9

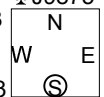
27

♠ 2
 ♠ K109
 ♠ 9854
 ♠ J9875

♠ AKJ3
 ♠ A3
 ♠ AK7
 ♠ AQ63

♠ 754
 ♠ 8754
 ♠ QJ63
 ♠ K4

♠ Q10986
 ♠ QJ62
 ♠ 102
 ♠ 102



Board (27) Av: NS=-370

N-S	E-W	Contract	N-S	E-W	IMP
1	8	3NT	W 5	460	-3
3	9	6NT	W-2	100	10
5	15	3NT	W 5	460	-3
7	2	4NT	W 5	460	-3
10	4	3NT	W 5	460	-3
11	14	6NT	W-1	50	9
13	12	3NT	W 3	400	-1
16	6	3NT	W 5	460	-3