

浜松チームリジョナル A Session 1 Flight A 2016年7月23日(土)

1

♠K1094
♥108
♦KQ2
♣6432

♠AQ3
♥AQ3
♦108743
♣85

♠7
♥KJ9642
♦95
♣AKQJ

♠J8652
♥75
♦AJ6
♣1097

Board (1) Av: NS=-450

N-S	E-W	Contract	N-S	E-W	IMP
1	2	6H E-1	50		11
2	1	4H E 5		450	0
3	8	5H E 5		450	0
4	7	4H E 5		450	0
5	6	4H E 5		450	0
6	5	4H E 5		450	0
7	4	4H E 5		450	0
8	3	4H E 5		450	0

2

♠Q43
♥K1043
♦2
♣AKJ62

♠J76
♥A9
♦Q1087
♣Q953

♠92
♥QJ65
♦AJ954
♣108

♠AK1085
♥872
♦K63
♣74

Board (2) Av: NS=+60

N-S	E-W	Contract	N-S	E-W	IMP
1	2	4S S 4	620		11
2	1	1NT W 1		90	-4
3	8	4S S-1		100	-4
4	7	2S S 3	140		2
5	6	3C N 4	130		2
6	5	4S S-1		100	-4
7	4	2S S 3	140		2
8	3	2C N 3	110		2

3

♠K3
♥J64
♦AJ4
♣J9643

♠AQ96
♥K
♦Q10653
♣AK5

♠J105
♥A109852
♦K8
♣Q8

♠8742
♥Q73
♦972
♣1072

Board (3) Av: NS=-620

N-S	E-W	Contract	N-S	E-W	IMP
1	2	4H E 5		650	-1
2	1	4H E 4		620	0
3	8	3NT W 5		660	-1
4	7	3NT W 3		600	1
5	6	3NT E 3		600	1
6	5	3NT W 3		600	1
7	4	3NT E 3		600	1
8	3	3NT W 5		660	-1

4

♠KQ10986
♥KQ63
♦102
♣J

♠J7
♥A104
♦QJ9
♣Q8632

♠53
♥J987
♦8543
♣A74

♠A42
♥52
♦AK76
♣K1095

Board (4) Av: NS=+670

N-S	E-W	Contract	N-S	E-W	IMP
1	2	5S N 5	650		-1
2	1	4S N 5	650		-1
3	8	4S N 6	680		0
4	7	4S N 6	680		0
5	6	4S N 5	650		-1
6	5	4S N 6	680		0
7	4	4S N 6	680		0
8	3	4S N 6	680		0

5

♠A974
♥5
♦J643
♣A842

♠KQ6
♥AQ742
♦2
♣Q976

♠J10853
♥10963
♦AK7
♣3

♠2
♥KJ8
♦Q10985
♣KJ105

Board (5) Av: NS=-380

N-S	E-W	Contract	N-S	E-W	IMP
1	2	4H W 4		420	-1
2	1	4H W-1	50		10
3	8	3Hx W 4		630	-6
4	7	4H W 4		420	-1
5	6	4H W 4		420	-1
6	5	3H W 4		170	5
7	4	4H W 4		420	-1
8	3	4H W 4		420	-1

6

♠J1076
♥J94
♦K983
♣74

♠5
♥AKQ83
♦QJ6
♣K963

♠AK84
♥106
♦10542
♣A108

♠Q932
♥752
♦A7
♣QJ52

Board (6) Av: NS=-650

N-S	E-W	Contract	N-S	E-W	IMP
1	2	3NT E 5		660	0
2	1	3NT E 5		660	0
3	8	3NT E 4		630	1
4	7	3NT E 4		630	1
5	6	3NT E 5		660	0
6	5	3NT E 3		600	2
7	4	3NT E 5		660	0
8	3	3NT E 5		660	0

7

♠KJ43
♥K108762
♦1062
♣

♠7
♥J43
♦J98
♣AQJ974

♠965
♥Q
♦AQ5
♣K106532

♠AQ1082
♥A95
♦K743
♣8

Board (7) Av: NS=+560

N-S	E-W	Contract	N-S	E-W	IMP
1	2	6Cx W-2	500		-2
2	1	5S S-2		200	-13
3	8	4S S 4	620		2
4	7	5S S-3		300	-13
5	6	5S S 6	680		3
6	5	4S S 6	680		3
7	4	5Sx S 6	1050		10
8	3	5Sx S 6	1050		10

8

♠A974
♥K
♦AK73
♣K876

♠KJ
♥J74
♦1086542
♣Q10

♠Q1062
♥653
♦QJ9
♣J32

♠853
♥AQ10982
♦
♣A954

Board (8) Av: NS=+480

N-S	E-W	Contract	N-S	E-W	IMP
1	4	4H S 6	480		0
2	3	4H S 6	480		0
3	2	4H S 6	480		0
4	1	3NT N 5	460		-1
5	8	3NT N 6	490		0
6	7	7C S-1		50	-11
7	6	4H S 6	480		0
8	5	3NT N 6	490		0

9

♠7
♥1032
♦AQJ9864
♣Q8

♠QJ82
♥AQ86
♦75
♣432

♠AK64
♥J97
♦102
♣AJ97

W—E
S

♠10953
♥K54
♦K3
♣K1065

Board (9) Av: NS=+140

N-S	E-W	Contract	N-S	E-W	IMP
1	4 3D	N 3	110		-1
2	3 4S	E-3	300		4
3	2 3D	N 3	110		-1
4	1 4S	E-1	100		-1
5	8 3D	N-1		50	-5
6	7 4S	E-2	200		2
7	6 3D	N 3	110		-1
8	5 4H	W-2	200		2

10

♠KQJ83
♥Q982
♦95
♣Q5

♠A5
♥A106
♦J874
♣AJ104

♠1097642
♥KJ
♦
♣98732

W—E
S

♠7543
♥AKQ10632
♦K6

Board (10) Av: NS=-190

N-S	E-W	Contract	N-S	E-W	IMP
1	4 2NT	S-2	200		0
2	3 5D	S-2	200		0
3	2 4H	N-2	200		0
4	1 2S	E 2	110		2
5	8 4H	N-2	200		0
6	7 4H	N-2	200		0
7	6 3NT	N-3	300		-3
8	5 4H	N 4	620		13

11

♠J104
♥A92
♦KQ103
♣962

♠8
♥6543
♦AJ92
♣J873

♠AKQ9632
♥107
♦8
♣AQ5

W—E
S

♠75
♥KQJ8
♦7654
♣K104

Board (11) Av: NS=-340

N-S	E-W	Contract	N-S	E-W	IMP
1	4 3S	E 4	170		5
2	3 3S	E 4	170		5
3	2 4S	E 4	420		-2
4	1 4S	E 4	420		-2
5	8 4S	E 4	420		-2
6	7 4S	E 4	420		-2
7	6 4S	E 4	420		-2
8	5 3S	E 4	170		5

12

♠Q854
♥J1083
♦J3
♣A74

♠K9764
♥K652
♣KQJ3

♠AK109762
♥52
♦Q874
♣

W—E
S

♠J3
♥AQ
♦A109
♣1098652

Board (12) Av: NS=-220

N-S	E-W	Contract	N-S	E-W	IMP
1	4 3S	E 3	140		2
2	3 4S	E 4	420		-5
3	2 3S	E 5	200		1
4	1 3S	E 4	170		2
5	8 4S	E-1	50		7
6	7 5D	E-2	100		8
7	6 4S	E 5	450		-6
8	5 4S	E 5	450		-6

13

♠K87
♥J10754
♦83
♣J75

♠AQ102
♥K2
♦AJ104
♣Q83

♠J9643
♥AQ9
♦6
♣A1094

W—E
S

♠5
♥863
♦KQ9752
♣K62

Board (13) Av: NS=-650

N-S	E-W	Contract	N-S	E-W	IMP
1	4 4S	W 5	650		0
2	3 4S	W 5	650		0
3	2 4S	E 5	650		0
4	1 4S	W 5	650		0
5	8 6S	E-1	100		13
6	7 3NT	W 5	660		0
7	6 4S	E 5	650		0
8	5 4S	W 5	650		0

14

♠K86
♥AJ7
♦A10
♣KJ1065

♠A10
♥10652
♦KJ6
♣A982

♠QJ97
♥KQ94
♦Q73
♣73

W—E
S

♠5432
♥83
♦98542
♣Q4

Board (14) Av: NS=-120

N-S	E-W	Contract	N-S	E-W	IMP
1	4 2D	S-1	50		2
2	3 2Sx	S-1	100		1
3	2 3Cx	N-2	300		-5
4	1 2Dx	S-1	100		1
5	8 2Dx	S-2	300		-5
6	7 2Dx	S-1	100		1
7	6 1NTxN	1	180		7
8	5 2D	S-1	50		2

15

♠Q4
♥QJ54
♦AJ85
♣Q53

♠AK109
♥AK6
♦Q
♣AKJ102

♠J8763
♥1082
♦109743
♣

W—E
S

♠52
♥973
♦K62
♣98764

Board (15) Av: NS=-470

N-S	E-W	Contract	N-S	E-W	IMP
1	6 4S	W 6	480		0
2	5 4S	W 6	480		0
3	4 5S	W 5	450		1
4	3 4S	E 6	480		0
5	2 4S	E 6	480		0
6	1 6S	E 6	980		-11
7	8 4S	W 5	450		1
8	7 1C	W 3	110		8

16

♠A
♥742
♦J764
♣AK863

♠109873
♥105
♦Q
♣QJ742

♠KQJ6
♥J986
♦AK82
♣10

W—E
S

♠542
♥AKQ3
♦10953
♣95

Board (16) Av: NS=-40

N-S	E-W	Contract	N-S	E-W	IMP
1	6 3S	W 4	170		-4
2	5 2S	W 4	170		-4
3	4 3H	S-1	50		0
4	3 1H	S 2	110		4
5	2 3C	W 3	110		-2
6	1 4S	W-1	100		4
7	8 2S	W 2	110		-2
8	7 3D	S 3	110		4

17 ♠A108543
♥752
♦2
♣732

♠Q2 ♠K76
♥KQ4 ♥AJ963
♦KJ1074 ♦983
♣AQJ ♣95

♠J9
♥108
♦AQ65
♣K10864

Board (17) Av: NS=-420

N-S	E-W	Contract	N-S	E-W	IMP
1	6	4H	E 4	420	0
2	5	4H	E 4	420	0
3	4	3D	W 4	130	7
4	3	4H	E 4	420	0
5	2	3NT	W 4	430	0
6	1	3NT	W 5	460	-1
7	8	4H	E 4	420	0
8	7	3NT	E 3	400	1

18 ♠AKJ542
♥Q85
♦5
♣Q52

♠Q983 ♠1076
♥K9 ♥A102
♦J1084 ♦AQ92
♣J86 ♣AK10

♠J7643
♥K763
♦9743

Board (18) Av: NS=-200

N-S	E-W	Contract	N-S	E-W	IMP
1	6	2S	N-2	200	0
2	5	3C	N-2	200	0
3	4	4H	S-4	400	-5
4	3	2S	N-2	200	0
5	2	2S	N-2	200	0
6	1	2S	N-2	200	0
7	8	2Sx	N-1	200	0
8	7	2S	N-2	200	0

19 ♠7
♥AKQ932
♦A96
♣K73

♠Q95 ♠AKJ108632
♥J5 ♥J2
♦1083 ♦854
♣AQJ106 ♣854

♠4
♥108764
♦KQ754
♣92

Board (19) Av: NS=+230

N-S	E-W	Contract	N-S	E-W	IMP
1	6	5S	E-1	100	-4
2	5	4H	N 5	450	6
3	4	5H	N 5	450	6
4	3	5S	E-1	100	-4
5	2	5S	E-1	100	-4
6	1	6Hx	N-1	100	-8
7	8	5H	N 5	450	6
8	7	5Sx	E-1	200	-1

20 ♠AJ
♥Q1086
♦Q10964
♣87

♠732 ♠KQ1095
♥973 ♥J52
♦J87 ♦K3
♣A943 ♣K65

♠864
♥AK4
♦A52
♣QJ102

Board (20) Av: NS=+50

N-S	E-W	Contract	N-S	E-W	IMP
1	6	4H	N-1	100	-4
2	5	3H	N 3	140	3
3	4	2H	N 3	140	3
4	3	3D	N 3	110	2
5	2	3H	N-2	200	-6
6	1	2S	E-2	200	4
7	8	3H	N-1	100	-4
8	7	3D	N 3	110	2

21 ♠KQJ9
♥J76
♦Q
♣AJ632

♠A875 ♠2
♥43 ♥KQ82
♦K109632 ♦A87
♣5 ♣KQ1098

♠10643
♥A1095
♦J54
♣74

Board (21) Av: NS=-60

N-S	E-W	Contract	N-S	E-W	IMP
1	6	3NT	E 3	400	-8
2	5	1S	S 1	80	4
3	4	1S	N 1	80	4
4	3	3D	W 4	130	-2
5	2	3D	W 4	130	-2
6	1	3D	W 5	150	-3
7	8	2S	N 2	110	5
8	7	3D	W 4	130	-2

22 ♠6
♥A632
♦J10763
♣J62

♠AK43 ♠Q1098
♥K109 ♥Q75
♦A94 ♦Q52
♣A107 ♣K95

♠J752
♥J84
♦K8
♣Q843

Board (22) Av: NS=0

N-S	E-W	Contract	N-S	E-W	IMP
1	8	4S	E-1	100	3
2	7	4S	E-2	200	5
3	6	4S	E-2	200	5
4	5	4S	E-1	100	3
5	4	4S	E 4	620	-12
6	3	4S	E 4	620	-12
7	2	4S	E-1	100	3
8	1	3NT	W-1	100	3

23 ♠A542
♥1054
♦AKQ5
♣83

♠K63 ♠QJ1087
♥A986 ♥KJ
♦J9632 ♦74
♣6 ♣A542

♠9
♥Q732
♦108
♣KQJ1097

Board (23) Av: NS=-160

N-S	E-W	Contract	N-S	E-W	IMP
1	8	3D	N-2	200	-1
2	7	3C	S 3	110	7
3	6	3S	E 3	140	1
4	5	1NT	N-2	200	-1
5	4	3S	E 3	140	1
6	3	3S	E 3	140	1
7	2	3S	E 4	170	0
8	1	2S	E 3	140	1

24 ♠AKJ8543
♥4
♦J9
♣963

♠Q6 ♠AJ62
♥975 ♥K742
♦Q1053 ♦KQ1072
♣AJ54 ♣KQ1072

♠10972
♥KQ1083
♦A86
♣8

Board (24) Av: NS=+450

N-S	E-W	Contract	N-S	E-W	IMP
1	8	4S	N 5	450	0
2	7	4S	N 5	450	0
3	6	4S	N 5	450	0
4	5	4S	N 5	450	0
5	4	4S	N 5	450	0
6	3	4Sx	N 4	590	4
7	2	4S	N 4	420	-1
8	1	5C	E-2	100	-8

25

♠ 973
♥ J8
♦ K98
♣ AQJ92

♠ 654
♥ Q9762
♦ 542
♣ 43

♠ Q8
♥ K1054
♦ AJ1073
♣ K8

♠ AKJ102
♥ A3
♦ Q6
♣ 10765

Board (25) Av: NS=+450

N-S	E-W	Contract	N-S	E-W	IMP
1	8	4S	S 5	450	0
2	7	4S	S 5	450	0
3	6	4S	S 5	450	0
4	5	4S	S 4	420	-1
5	4	4S	S 5	450	0
6	3	4S	S 5	450	0
7	2	4S	S 5	450	0
8	1	4S	S 5	450	0

26

♠ 1076
♥ 95
♦ Q98
♣ J9852

♠ J53
♥ KJ76
♦ J106
♣ AQ6

♠ K92
♥ AQ10843
♦ A2
♣ 73

♠ AQ84
♥ 2
♦ K7543
♣ K104

Board (26) Av: NS=-620

N-S	E-W	Contract	N-S	E-W	IMP
1	8	4H	E 4	620	0
2	7	4H	E 4	620	0
3	6	4H	E 4	620	0
4	5	4H	E 4	620	0
5	4	4H	E 4	620	0
6	3	3NT	W 4	630	0
7	2	4H	E 4	620	0
8	1	4H	E 4	620	0

27

♠ 1042
♥ J864
♦ 72
♣ J953

♠ Q
♥ AKQ1092
♦ Q1094
♣ 86

♠ AKJ97
♥ 53
♦ 86
♣ AQ107

♠ 8653
♥ 7
♦ AKJ53
♣ K42

Board (27) Av: NS=-430

N-S	E-W	Contract	N-S	E-W	IMP
1	8	3NT	W 4	430	0
2	7	4H	W 4	420	0
3	6	3NT	W 4	430	0
4	5	4H	W 4	420	0
5	4	3NT	E 5	460	-1
6	3	3NT	E 4	430	0
7	2	3NT	W 4	430	0
8	1	4H	W 4	420	0

28

♠ 8653
♥ QJ32
♦ A5
♣ 985

♠ J72
♥ AK10985
♦ 43
♣ 107

♠ A4
♥ 76
♦ Q109872
♣ Q43

♠ KQ109
♥ 4
♦ KJ6
♣ AKJ62

Board (28) Av: NS=+620

N-S	E-W	Contract	N-S	E-W	IMP
1	8	3NT	N 3	600	-1
2	7	4S	N 4	620	0
3	6	4S	N 4	620	0
4	5	4S	S 4	620	0
5	4	4S	N 4	620	0
6	3	4S	N 5	650	1
7	2	4S	N 4	620	0
8	1	4S	N 4	620	0

1

♠K3
♥K3
♦KJ9874
♣1065

♠J1095
♥86
♦A6
♣Q9432

♠Q762
♥A72
♦Q32
♣AKJ

♠A84
♥QJ10954
♦105
♣87

Board (1) Av: NS=-10

N-S	E-W	Contract	N-S	E-W	IMP	
1	3	2D	S	2	90	3
3	1	4S	E	4	420	-9
4	8	2H	S	3	140	4
5	7	3H	S	3	140	4
7	5	4S	E	4	420	-9
8	4	2H	S	3	140	4

2

♠AJ654
♥AQ10642
♦4
♣6

♠1073
♥J985
♦85
♣K1092

♠8
♥3
♦KJ10972
♣AQJ83

♠KQ92
♥K7
♦AQ63
♣754

Board (2) Av: NS=+700

N-S	E-W	Contract	N-S	E-W	IMP	
1	3	5Cx	E-4	800	3	
3	1	5H	N	5	650	-2
4	8	4S	N	7	710	0
5	7	4S	S	7	710	0
7	5	5S	N	6	680	-1
8	4	5S	S	7	710	0

3

♠AK9743
♥A754
♦J2
♣10

♠J82
♥J103
♦743
♣Q974

♠6
♥KQ9
♦KQ1085
♣A863

♠Q105
♥862
♦A96
♣KJ52

Board (3) Av: NS=+290

N-S	E-W	Contract	N-S	E-W	IMP	
1	3	4S	N-1	50	-8	
3	1	2S	N	3	140	-4
4	8	3S	N	4	170	-3
5	7	4S	N	4	420	4
7	5	4S	N	4	420	4
8	4	4S	N	4	420	4

4

♠KQ8
♥AK5
♦8653
♣J42

♠63
♥63
♦J74
♣AQ9876

♠AJ94
♥QJ9872
♦A10
♣5

♠10752
♥104
♦KQ92
♣K103

Board (4) Av: NS=-230

N-S	E-W	Contract	N-S	E-W	IMP	
1	3	1NT	N-2	200	1	
3	1	3D	N-2	200	1	
4	8	1NT	N-3	300	-2	
5	7	3D	N-2	200	1	
7	5	3D	N-2	200	1	
8	4	3Hx	E	3	730	-11

5

♠AK10654
♥A1064
♦KQ2
♣

♠832
♥J
♦954
♣1086543

♠9
♥K9853
♦A7
♣AKQJ2

♠QJ7
♥Q72
♦J10863
♣97

Board (5) Av: NS=+360

N-S	E-W	Contract	N-S	E-W	IMP	
1	3	4S	N	5	650	7
3	1	5C	E	5	400	-13
4	8	5C	W-1	50	-7	
5	7	5Sx	N	5	850	10
7	5	5Cx	E-1	100	-6	
8	4	5S	N	5	650	7

6

♠1076
♥K106
♦Q53
♣A1075

♠J4
♥A843
♦A108
♣Q943

♠AK985
♥QJ
♦K64
♣KJ8

♠Q32
♥9752
♦J972
♣62

Board (6) Av: NS=-630

N-S	E-W	Contract	N-S	E-W	IMP	
1	3	3NT	W	4	630	0
3	1	3NT	W	4	630	0
4	8	3NT	W	3	600	1
5	7	3NT	E	4	630	0
7	5	3NT	W	4	630	0
8	4	3NT	E	5	660	-1

7

♠AK92
♥
♦AK732
♣QJ95

♠QJ7
♥KJ10942
♦8
♣A62

♠864
♥8653
♦4
♣K8743

♠1053
♥AQ7
♦QJ10965
♣10

Board (7) Av: NS=+620

N-S	E-W	Contract	N-S	E-W	IMP	
1	3	5D	S	6	620	0
3	1	3NT	S	4	630	0
4	8	5D	S	6	620	0
5	7	5D	S	6	620	0
7	5	5D	S	7	640	1
8	4	5D	S	6	620	0

8

♠8752
♥109
♦AJ9
♣10643

♠K109
♥A3
♦KQ10864
♣Q5

♠Q6
♥J87652
♦2
♣K872

♠AJ43
♥KQ4
♦753
♣AJ9

Board (8) Av: NS=-110

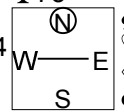
N-S	E-W	Contract	N-S	E-W	IMP	
1	5	2H	E	2	110	0
2	4	2H	E	2	110	0
4	2	2H	E	2	110	0
5	1	2H	W	2	110	0
6	8	2D	W	2	90	1
8	6	3S	N-2	100	0	

浜松チームリジョナル A Session 2 Flight A 2016年7月23日(土)

9

♠AKQ53
♥98
♦7543
♣75

♠108 ♠64
♥AKQ64 ♥J10732
♦Q62 ♦K8
♣J109 ♣A864



♠J972
♥5
♦AJ109
♣KQ32

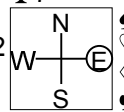
Board (9) Av: NS=+420

N-S	E-W	Contract	N-S	E-W	IMP
1	5	4S	N 4	420	0
2	4	4S	N 4	420	0
4	2	4S	N 4	420	0
5	1	3S	N 4	170	-6
6	8	4S	N 4	420	0
8	6	4S	N 5	450	1

10

♠AQ10986
♥A4
♦AQ72
♣7

♠72 ♠J543
♥Q9652 ♥K107
♦105 ♦K964
♣9543 ♣J2



♠K
♥J83
♦J83
♣AKQ1086

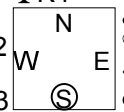
Board (10) Av: NS=+480

N-S	E-W	Contract	N-S	E-W	IMP
1	5	6S	N-1	100	-11
2	4	4S	N 5	650	5
4	2	3NT	N 7	720	6
5	1	3NT	N 7	720	6
6	8	3NT	S 5	660	5
8	6	3NT	S-1	100	-11

11

♠A9874
♥98
♦A953
♣K4

♠106 ♠J532
♥10432 ♥K6
♦J64 ♦102
♣AJ103 ♣Q9652



♠KQ
♥AQJ75
♦KQ87
♣87

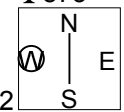
Board (11) Av: NS=+460

N-S	E-W	Contract	N-S	E-W	IMP
1	5	5D	S 6	420	-1
2	4	6D	S 6	920	10
4	2	3NT	N 3	400	-2
5	1	3NT	S 5	460	0
6	8	4S	N 5	450	0
8	6	3NT	S 7	520	2

12

♠Q
♥J987
♦AQJ105
♣873

♠94 ♠KJ8653
♥KQ4 ♥A6
♦K432 ♦97
♣A1042 ♣KQ6



♠A1072
♥10532
♦86
♣J95

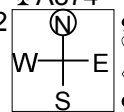
Board (12) Av: NS=-60

N-S	E-W	Contract	N-S	E-W	IMP
1	5	3NT	W 3	400	-8
2	4	4S	E 4	420	-8
4	2	4S	E-1	50	3
5	1	4S	E-1	50	3
6	8	4S	E-2	100	4
8	6	3NT	W-1	50	3

13

♠A4
♥AJ9
♦AKQ10
♣A874

♠108632 ♠KQJ7
♥10642 ♥8
♦97 ♦8532
♣J10 ♣Q963



♠95
♥KQ753
♦J64
♣K52

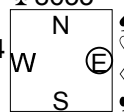
Board (13) Av: NS=+1060

N-S	E-W	Contract	N-S	E-W	IMP
1	5	6H	N 6	1430	9
2	4	6H	N 6	1430	9
4	2	6H	N 6	1430	9
5	1	4H	N 6	680	-9
6	8	4H	N 6	680	-9
8	6	4H	N 6	680	-9

14

♠K65
♥Q10
♦8653
♣8653

♠J9 ♠Q103
♥K987654 ♥AJ2
♦A102 ♦K94
♣9 ♣J1042



♠A8742
♥3
♦QJ7
♣AKQ7

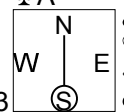
Board (14) Av: NS=-330

N-S	E-W	Contract	N-S	E-W	IMP
1	5	4Hx	W 4	590	-6
2	4	3S	S-2	100	6
4	2	4Hx	W 4	590	-6
5	1	3S	S-2	100	6
6	8	4S	S-4	200	4
8	6	4H	W 4	420	-3

15

♠8542
♥KQJ7
♦9743
♣A

♠QJ10 ♠K963
♥642 ♥A8
♦KQ ♦10652
♣108763 ♣KJ5



♠A7
♥10953
♦AJ8
♣Q942

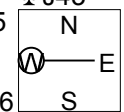
Board (15) Av: NS=+60

N-S	E-W	Contract	N-S	E-W	IMP
1	7	3H	N-1	100	-4
2	6	Passout			-2
3	5	Passout			-2
5	3	3C	W-2	100	1
6	2	2H	S 3	140	2
7	1	1H	S 3	140	2

16

♠1093
♥AK1075
♦A5
♣J43

♠J865 ♠AQ74
♥J2 ♥6
♦932 ♦QJ876
♣Q976 ♣AK5



♠K2
♥Q9843
♦K104
♣1082

Board (16) Av: NS=+90

N-S	E-W	Contract	N-S	E-W	IMP
1	7	3H	N 3	140	2
2	6	2H	N 4	170	2
3	5	4H	N-1	50	-4
5	3	4S	W-1	100	0
6	2	4H	N-1	50	-4
7	1	4Sx	W-2	500	9

浜松チームリジョナル A Session 2 Flight A 2016年7月23日(土)

17 ♠Q109
♥QJ
♦1086
♣A10765

♠A8652 ♠K952 ♠J3
♥876 ♥K952 ♥AK2
♦74 ♦AK2 ♦J942
♣KQ8 ♣J942

♠K74
♥A1043
♦QJ953
♣3

Board (17) Av: NS=+70

N-S	E-W	Contract	N-S	E-W	IMP
1	7 2S	W-1	50		-1
2	6 3D	S 4	130		2
3	5 1NT	N 3	150		2
5	3 1NT	E-1		90	-4
6	2 1NT	E-1	50		-1
7	1 1NT	E-1	50		-1

18 ♠KQ98
♥AQ2
♦J2
♣QJ102

♠AJ103
♥75
♦AK1065
♣87

♠76542
♥KJ109
♦743
♣4

Board (18) Av: NS=-120

N-S	E-W	Contract	N-S	E-W	IMP
1	7 1S	S 1	80		5
2	6 2D	E 5		150	-1
3	5 2D	E 3		110	0
5	3 3D	E 4		130	0
6	2 1NT	W 2		120	0
7	1 3C	W 3		110	0

19 ♠10853
♥64
♦1075
♣J642

♠KQ92 ♠J4
♥1075 ♥KQ83
♦AKQ ♦J632
♣K103 ♣875

♠A76
♥AJ92
♦984
♣AQ9

Board (19) Av: NS=-100

N-S	E-W	Contract	N-S	E-W	IMP
1	7 2Cx	N-2		300	-5
2	6 1NT	S-1		50	2
3	5 1NT	S-2		100	0
5	3 1NT	S-2		100	0
6	2 1NT	S-1		50	2
7	1 1NT	S-3		150	-2

20 ♠K1083
♥A104
♦J92
♣J83

♠AQ942
♥32
♦Q104
♣Q102

♠5
♥KQJ9875
♦K76
♣65

Board (20) Av: NS=-310

N-S	E-W	Contract	N-S	E-W	IMP
1	7 3Hx	S-1		200	3
2	6 4S	E 5		650	-8
3	5 3H	S-1		100	5
5	3 4S	E 5		650	-8
6	2 3Hx	S-1		200	3
7	1 2S	E 5		200	3

21 ♠KJ
♥AQJ
♦AKQ764
♣Q8

♠A965 ♠Q108
♥108643 ♥K52
♦J1085 ♦2
♣ ♣KJ9653

♠7432
♥97
♦93
♣A10742

Board (21) Av: NS=+400

N-S	E-W	Contract	N-S	E-W	IMP
1	7 3NT	N-2		200	-12
2	6 3NT	S 3		600	5
3	5 3NT	N 3		600	5
5	3 6NT	N-3		300	-12
6	2 3NT	N 3		600	5
7	1 3NT	S 3		600	5

22 ♠K94
♥K82
♦K98
♣9654

♠Q873
♥Q73
♦AQ104
♣73

♠1062
♥AJ104
♦72
♣AK108

Board (22) Av: NS=+60

N-S	E-W	Contract	N-S	E-W	IMP
2	8 1NT	N 2		120	2
3	7 1NT	N 2		120	2
4	6 1NT	N 1		90	1
6	4 1NT	N-2		100	-4
7	3 1NT	N-1		50	-3
8	2 1NT	N 1		90	1

23 ♠KJ6
♥J5
♦AJ753
♣A85

♠10543 ♠AQ987
♥A9862 ♥743
♦ ♢KQ
♣QJ109 ♣K72

♠2
♥KQ10
♦1098642
♣643

Board (23) Av: NS=-400

N-S	E-W	Contract	N-S	E-W	IMP
2	8 4S	E 4		620	-6
3	7 5D	N-2		200	5
4	6 3S	E 4		170	6
6	4 1NT	N 3		150	11
7	3 4S	E 4		620	-6
8	2 4S	E 4		620	-6

24 ♠KQ954
♥10
♦98
♣Q6543

♠AJ76 ♠AJ76
♥J753 ♥A982
♦A10743 ♦QJ5
♣987 ♣K2

♠1032
♥KQ64
♦K62
♣AJ10

Board (24) Av: NS=+40

N-S	E-W	Contract	N-S	E-W	IMP
2	8 2S	N 2		110	2
3	7 3H	E-1		50	0
4	6 1NT	E 1		90	-4
6	4 2S	N 2		110	2
7	3 1NT	E 3		150	-5
8	2 2C	N 2		90	2

25

♠ J42
♥ KQ2
♦ AK
♣ AQ862

♠ KQ5
♥ A1064
♦ QJ75
♣ KJ

♠ 1097
♥ J83
♦ 9432
♣ 973

♠ A863
♥ 975
♦ 1086
♣ 1054

Diagram: A 4-card hand with N=10, W=1, E=1, S=1.

Board (25) Av: NS=+280

N-S	E-W	Contract	N-S	E-W	IMP
2	8	3NT N 3	400		3
3	7	3NT N 3	400		3
4	6	1NTxW-2	500		6
6	4	1NT N 2	120		-4
7	3	1NT N 3	150		-4
8	2	1NT N 4	180		-3

26

♠ Q3
♥ Q3
♦ 109853
♣ A853

♠ K62
♥ A10974
♦ J
♣ QJ107

♠ 974
♥ K6
♦ AK7642
♣ K6

♠ AJ1085
♥ J852
♦ Q
♣ 942

Diagram: A 4-card hand with N=10, W=1, E=1, S=1.

Board (26) Av: NS=+130

N-S	E-W	Contract	N-S	E-W	IMP
2	8	3NT W-1	100		-1
3	7	3NT W-2	200		2
4	6	3NT W-1	100		-1
6	4	2D E 2		90	-6
7	3	3NT W-2	200		2
8	2	3NT W-1	100		-1

27

♠ 10972
♥ J1054
♦ KJ
♣ Q76

♠ AQ853
♥ KQ73
♦ A
♣ A85

♠ J6
♥ 987432
♦ K10932

♠ K4
♥ A9862
♦ Q1065
♣ J4

Diagram: A 4-card hand with N=10, W=1, E=1, S=1.

Board (27) Av: NS=-150

N-S	E-W	Contract	N-S	E-W	IMP
2	8	2S W 3	140		0
3	7	3Hx S-3	500		-8
4	6	4S W-1	50		5
6	4	3NT E 3	400		-6
7	3	2H S-2	100		2
8	2	3NT E-1	50		5

28

♠ AJ
♥ 97
♦ K10963
♣ Q862

♠ 63
♥ KQJ3
♦ J5
♣ J9743

♠ Q98542
♥ A8
♦ 2
♣ AK105

♠ K107
♥ 106542
♦ AQ874
♣

Diagram: A 4-card hand with N=10, W=1, E=1, S=1.

Board (28) Av: NS=-20

N-S	E-W	Contract	N-S	E-W	IMP
2	8	3C E 3	110		-3
3	7	3C E 3	110		-3
4	6	4C E-1	50		2
6	4	3D S 5	150		5
7	3	4S E-2	100		3
8	2	2S E 2	110		-3