

浜松チームリジョナル B Session 1 Flight B 2016年7月23日(土)

1

♠K1094  
♥108  
♦KQ2  
♣6432

♠AQ3  
♥AQ3  
♦108743  
♣85

♠7  
♥KJ9642  
♦95  
♣AKQJ

♠J8652  
♥75  
♦AJ6  
♣1097

Board (1) Av: NS=-360

N-S	E-W	Contract	N-S	E-W	IMP
3	8	4H E 5		450	-3
5	13	4H E 5		450	-3
7	4	4Sx S-4		800	-10
9	12	6H E-2	100		10
11	10	4H E 6		480	-3
14	6	4H E 4		420	-2
15	17	6H E-2	100		10
18	16	4H E 5		450	-3

2

♠Q43  
♥K1043  
♦2  
♣AKJ62

♠J76  
♥A9  
♦Q1087  
♣Q953

♠92  
♥QJ65  
♦AJ954  
♣108

♠AK1085  
♥872  
♦K63  
♣74

Board (2) Av: NS=+220

N-S	E-W	Contract	N-S	E-W	IMP
3	8	4S S-1		100	-8
5	13	4S N 5	650		10
7	4	3H N 3	140		-2
9	12	3Dx E-2	300		2
11	10	3S S 4	170		-2
14	6	5Dx E-5	1100		13
15	17	3S S 3	140		-2
18	16	4S S-1	100		-8

3

♠K3  
♥J64  
♦AJ4  
♣J9643

♠AQ96  
♥K  
♦Q10653  
♣AK5

♠J105  
♥A109852  
♦K8  
♣Q8

♠8742  
♥Q73  
♦972  
♣1072

Board (3) Av: NS=-630

N-S	E-W	Contract	N-S	E-W	IMP
3	8	3NT W 3		600	1
5	13	3NT W 5		660	-1
7	4	4H E 5		650	-1
9	12	4S W 5		650	-1
11	10	3NT W 3		600	1
14	6	4H E 5		650	-1
15	17	4H E 4		620	0
18	16	3NT W 3		600	1

4

♠KQ10986  
♥KQ63  
♦102  
♣J

♠J7  
♥A104  
♦QJ9  
♣Q8632

♠53  
♥J987  
♦8543  
♣A74

♠A42  
♥52  
♦AK76  
♣K1095

Board (4) Av: NS=+640

N-S	E-W	Contract	N-S	E-W	IMP
1	15	4S N 4	620		-1
5	10	4S N 5	650		0
7	12	4S N 6	680		1
9	6	4S N 4	620		-1
11	8	4S N 5	650		0
13	17	5S N-3	300		-14
16	2	3NT S 3	600		-1
18	14	4S N 6	680		1

5

♠A974  
♥5  
♦J643  
♣A842

♠KQ6  
♥AQ742  
♦2  
♣Q976

♠J10853  
♥10963  
♦AK7  
♣3

♠2  
♥KJ8  
♦Q10985  
♣KJ105

Board (5) Av: NS=-420

N-S	E-W	Contract	N-S	E-W	IMP
1	15	4H W 4		420	0
5	10	4H W 4		420	0
7	12	4H W-1	50		10
9	6	4H W 4		420	0
11	8	4S E 4		420	0
13	17	4H W 4		420	0
16	2	4H W 4		420	0
18	14	4H W 4		420	0

6

♠J1076  
♥J94  
♦K983  
♣74

♠5  
♥AKQ83  
♦QJ6  
♣K963

♠AK84  
♥106  
♦10542  
♣A108

♠Q932  
♥752  
♦A7  
♣QJ52

Board (6) Av: NS=-560

N-S	E-W	Contract	N-S	E-W	IMP
1	15	3NT E 6		690	-4
5	10	2NT E 3		150	9
7	12	3NT E 5		660	-3
9	6	3NT E 3		600	-1
11	8	2NT W 5		210	8
13	17	3NT E 3		600	-1
16	2	3NT E 5		660	-3
18	14	3NT W 4		630	-2

7

♠KJ43  
♥K108762  
♦1062  
♣

♠7  
♥J43  
♦J98  
♣AQJ974

♠965  
♥Q  
♦AQ5  
♣K106532

♠AQ1082  
♥A95  
♦K743  
♣8

Board (7) Av: NS=+590

N-S	E-W	Contract	N-S	E-W	IMP
1	12	4S S 4	620		1
3	17	4S S 6	680		3
7	10	4S S 6	680		3
9	8	4S S 5	650		2
11	2	5C W-1	100		-10
13	15	4S S 6	680		3
16	14	3S S 6	230		-8
18	4	6S S 6	1430		13

8

♠A974  
♥K  
♦AK73  
♣K876

♠KJ  
♥J74  
♦1086542  
♣Q10

♠Q1062  
♥653  
♦QJ9  
♣J32

♠853  
♥AQ10982  
♦  
♣A954

Board (8) Av: NS=+470

N-S	E-W	Contract	N-S	E-W	IMP
1	12	3NT N 6	490		1
3	17	4H N 6	480		0
7	10	3NT N 6	490		1
9	8	3NT N 4	430		-1
11	2	4H S 6	480		0
13	15	3NT N 4	430		-1
16	14	3NT S 5	460		0
18	4	4H S 6	480		0

**9**

♠7  
♥1032  
♦AQJ9864  
♣Q8

♠AQJ82  
♥AQ86  
♦75  
♣432

♠AK64  
♥J97  
♦102  
♣AJ97

♠10953  
♥K54  
♦K3  
♣K1065

Board (9) Av: NS=+10

**10**

♠KQJ83  
♥Q982  
♦95  
♣Q5

♠A5  
♥A106  
♦J874  
♣AJ104

♠1097642  
♥KJ  
♦  
♣98732

♠7543  
♥AKQ10632  
♦K6

Board (10) Av: NS=-130

**11**

♠J104  
♥A92  
♦KQ103  
♣962

♠8  
♥6543  
♦AJ92  
♣J873

♠AKQ9632  
♥107  
♦8  
♣AQ5

♠75  
♥KQJ8  
♦7654  
♣K104

Board (11) Av: NS=-300

**12**

♠Q854  
♥J1083  
♦J3  
♣A74

♠K9764  
♥K652  
♣KQJ3

♠AK109762  
♥52  
♦Q874  
♣

♠J3  
♥AQ  
♦A109  
♣1098652

Board (12) Av: NS=-40

N-S	E-W	Contract	N-S	E-W	IMP
1	12	3H	W-1	100	3
3	17	4S	E-2	200	5
7	10	3D	N 4	130	3
9	8	3D	W-1	50	-2
11	2	2H	W 3	140	-4
13	15	3D	N 3	110	3
16	14	2S	E 3	140	-4
18	4	4D	N-2	100	-3

N-S	E-W	Contract	N-S	E-W	IMP
1	11	3H	N-1	100	1
3	5	4H	N-1	100	1
6	4	4H	N-3	300	-5
9	14	4H	N-2	200	-2
12	2	4H	N-1	100	1
13	10	4H	N-2	200	-2
15	18	3D	S-1	100	1
17	16	3NT	S-1	100	1

N-S	E-W	Contract	N-S	E-W	IMP
1	11	4S	E 4	420	-3
3	5	4S	E 4	420	-3
6	4	5D	N-4	200	3
9	14	4S	E-1	50	8
12	2	4S	E 4	420	-3
13	10	3S	E 4	170	4
15	18	4S	E 4	420	-3
17	16	3S	E 4	170	4

N-S	E-W	Contract	N-S	E-W	IMP
1	11	4S	E-1	50	3
3	5	3S	E 3	140	-3
6	4	3S	E 4	170	-4
9	14	3NT	W-3	150	5
12	2	2S	E 4	170	-4
13	10	4S	E-1	50	3
15	18	6D	E-2	100	4
17	16	2S	E 3	140	-3

**13**

♠K87  
♥J10754  
♦83  
♣J75

♠AQ102  
♥K2  
♦AJ104  
♣Q83

♠J9643  
♥AQ9  
♦6  
♣A1094

♠5  
♥863  
♦KQ9752  
♣K62

Board (13) Av: NS=-270

**14**

♠K86  
♥AJ7  
♦A10  
♣KJ1065

♠A10  
♥10652  
♦KJ6  
♣A982

♠QJ97  
♥KQ94  
♦Q73  
♣73

♠5432  
♥83  
♦98542  
♣Q4

Board (14) Av: NS=+60

**15**

♠Q4  
♥QJ54  
♦AJ85  
♣Q53

♠AK109  
♥AK6  
♦Q  
♣AKJ102

♠J8763  
♥1082  
♦109743  
♣

♠52  
♥973  
♦K62  
♣98764

Board (15) Av: NS=-460

**16**

♠A  
♥742  
♦J764  
♣AK863

♠109873  
♥105  
♦Q  
♣QJ742

♠KQJ6  
♥J986  
♦AK82  
♣10

♠542  
♥AKQ3  
♦10953  
♣95

Board (16) Av: NS=-120

N-S	E-W	Contract	N-S	E-W	IMP
1	5	6S	E-1	100	9
3	7	6S	E-1	100	9
6	2	4S	W 5	650	-9
8	4	6S	E-1	100	9
11	16	4S	W 4	620	-8
13	18	6S	E-1	100	9
15	12	4S	E 5	650	-9
17	14	4S	E 5	650	-9

N-S	E-W	Contract	N-S	E-W	IMP
1	5	2D	S-1	50	-3
3	7	3Dx	S-3	500	-11
6	2	1NTxN	3	380	8
8	4	1NTxN	1	180	3
11	16	2H	E-1	50	0
13	18	1NTxN	1	180	3
15	12	1NT	N 1	90	1
17	14	2Sx	S-1	100	-4

N-S	E-W	Contract	N-S	E-W	IMP
1	5	1C	W 3	110	8
3	7	6S	E 6	980	-11
6	2	3C	W 4	130	8
8	4	4S	W 6	480	-1
11	16	2NT	W 4	180	7
13	18	4S	E 6	480	-1
15	12	6S	E 6	980	-11
17	14	4S	E 6	480	-1

N-S	E-W	Contract	N-S	E-W	IMP
1	3	2S	W 4	170	-2
4	2	2S	W 4	170	-2
5	9	2S	W 3	140	-1
7	18	4S	W-1	100	6
10	6	3S	W 5	200	-2
13	16	3S	W 3	140	-1
15	14	4S	W-1	100	6
17	8	2S	W 4	170	-2

**17** ♠A108543  
♥752  
♦2  
♣732

♠Q2 ♠K76  
♥KQ4 ♥AJ963  
♦KJ1074 ♦983  
♣AQJ ♣95

♠J9  
♥108  
♦AQ65  
♣K10864

Board (17) Av: NS=-380

N-S	E-W	Contract	N-S	E-W	IMP
1	3	3H	E 4	170	5
4	2	3NT	W 4	430	-2
5	9	3NT	E 3	400	-1
7	18	4H	E 4	420	-1
10	6	2D	W 4	130	6
13	16	4H	E 4	420	-1
15	14	4H	E 5	450	-2
17	8	4H	E 4	420	-1

**18** ♠AKJ542  
♥Q85  
♦5  
♣Q52

♠Q983 ♠1076  
♥K9 ♥A102  
♦J1084 ♦AQ92  
♣J86 ♣AK10

♠J7643  
♥K763  
♦9743

Board (18) Av: NS=-170

N-S	E-W	Contract	N-S	E-W	IMP
1	3	3D	E 3	110	2
4	2	2S	N-1	100	2
5	9	1NT	E 2	120	2
7	18	3NT	E-1	50	6
10	6	1NT	E 1	90	2
13	16	3NT	E 3	400	-6
15	14	2S	N-2	200	-1
17	8	2SxxN-1		400	-6

**19** ♠7  
♥AKQ932  
♦A96  
♣K73

♠Q95 ♠AKJ108632  
♥J5 ♥J2  
♦1083 ♦J2  
♣AQJ106 ♣854

♠4  
♥108764  
♦KQ754  
♣92

Board (19) Av: NS=+180

N-S	E-W	Contract	N-S	E-W	IMP
1	16	5Sx	E-1	200	1
3	6	5S	E-1	100	-2
5	4	5H	N 5	450	7
7	17	6H	N-1	50	-6
9	11	5Sx	E-1	200	1
12	10	5Sx	E-1	200	1
15	2	6H	N-1	50	-6
18	8	5H	N 5	450	7

**20** ♠AJ  
♥Q1086  
♦Q10964  
♣87

♠732 ♠KQ1095  
♥973 ♥J52  
♦J87 ♦K3  
♣A943 ♣K65

♠864  
♥AK4  
♦A52  
♣QJ102

Board (20) Av: NS=+110

N-S	E-W	Contract	N-S	E-W	IMP
1	16	3D	N 3	110	0
3	6	1S	E 1	80	-5
5	4	3D	N 3	110	0
7	17	2S	E-1	100	0
9	11	1S	E-1	100	0
12	10	2S	E-2	200	3
15	2	3C	S 3	110	0
18	8	3H	N 3	140	1

**21** ♠KQJ9  
♥J76  
♦Q  
♣AJ632

♠A875 ♠2  
♥43 ♥KQ82  
♦K109632 ♦A87  
♣5 ♣KQ1098

♠10643  
♥A1095  
♦J54  
♣74

Board (21) Av: NS=-20

N-S	E-W	Contract	N-S	E-W	IMP
1	16	4D	W-1	50	2
3	6	3D	W 4	130	-3
5	4	3S	N-1	100	-2
7	17	2NT	E 2	120	-3
9	11	2S	N 2	110	4
12	10	2S	N 2	110	4
15	2	3S	N-2	200	-5
18	8	1NT	N 1	90	3

**22** ♠6  
♥A632  
♦J10763  
♣J62

♠AK43 ♠Q1098  
♥K109 ♥Q75  
♦A94 ♦Q52  
♣A107 ♣K95

♠J752  
♥J84  
♦K8  
♣Q843

Board (22) Av: NS=-70

N-S	E-W	Contract	N-S	E-W	IMP
1	6	4S	E-1	100	5
3	18	3NT	W-1	100	5
5	2	4S	E 5	650	-11
7	11	4S	E-1	100	5
9	13	4S	E-1	100	5
12	8	4S	E 4	620	-11
14	10	4S	E-1	100	5
17	4	2S	E 4	170	-3

**23** ♠A542  
♥1054  
♦AKQ5  
♣83

♠K63 ♠QJ1087  
♥A986 ♥KJ  
♦J9632 ♦74  
♣6 ♣A542

♠9  
♥Q732  
♦108  
♣KQJ1097

Board (23) Av: NS=-100

N-S	E-W	Contract	N-S	E-W	IMP
1	6	3Sx	E 4	930	-13
3	18	2S	E 3	140	-1
5	2	3C	S 3	110	5
7	11	1NT	S-1	100	0
9	13	2S	E 4	170	-2
12	8	2S	E 3	140	-1
14	10	2S	E 4	170	-2
17	4	3C	S 3	110	5

**24** ♠AKJ8543  
♥4  
♦J9  
♣963

♠Q6 ♠AJ62  
♥975 ♥K742  
♦Q1053 ♦KQ1072  
♣AJ54 ♣KQ1072

♠10972  
♥KQ1083  
♦A86  
♣8

Board (24) Av: NS=+390

N-S	E-W	Contract	N-S	E-W	IMP
1	6	5C	W-2	100	-7
3	18	4S	N 4	420	1
5	2	4S	N 5	450	2
7	11	4S	N 4	420	1
9	13	2S	N 4	170	-6
12	8	4S	N 4	420	1
14	10	4Sx	N 5	690	7
17	4	5S	N 5	450	2

**25**

♠ 973  
♥ J8  
♦ K98  
♣ AQJ92

♠ 654  
♥ Q9762  
♦ 542  
♣ 43

♠ Q8  
♥ K1054  
♦ AJ1073  
♣ K8

♠ AKJ102  
♥ A3  
♦ Q6  
♣ 10765

**26**

♠ 1076  
♥ 95  
♦ Q98  
♣ J9852

♠ J53  
♥ KJ76  
♦ J106  
♣ AQ6

♠ K92  
♥ AQ10843  
♦ A2  
♣ 73

♠ AQ84  
♥ 2  
♦ K7543  
♣ K104

**27**

♠ 1042  
♥ J864  
♦ 72  
♣ J953

♠ Q  
♥ AKQ1092  
♦ Q1094  
♣ 86

♠ AKJ97  
♥ 53  
♦ 86  
♣ AQ107

♠ 8653  
♥ 7  
♦ AKJ53  
♣ K42

Board (25) Av: NS=+410

N-S	E-W	Contract	N-S	E-W	IMP
1	4	4S	S 5	450	1
3	2	4S	S 5	450	1
5	14	4S	S 5	450	1
7	9	3NT	N 5	460	2
10	8	4S	S 5	450	1
11	15	2S	S 5	200	-5
13	6	4S	S 5	450	1
16	12	2S	S 5	200	-5

Board (26) Av: NS=-620

N-S	E-W	Contract	N-S	E-W	IMP
1	4	4H	E 4	620	0
3	2	4H	E 4	620	0
5	14	4H	E 4	620	0
7	9	4H	E 4	620	0
10	8	4H	E 4	620	0
11	15	4H	E 4	620	0
13	6	4H	E 4	620	0
16	12	4H	E 4	620	0

Board (27) Av: NS=-420

N-S	E-W	Contract	N-S	E-W	IMP
1	4	4H	W 5	450	-1
3	2	4H	W 4	420	0
5	14	4H	W 4	420	0
7	9	3NT	W 3	400	1
10	8	3NT	W 4	430	0
11	15	4H	W 4	420	0
13	6	4H	W 4	420	0
16	12	4H	W 4	420	0

**1**

♠K3  
♥K3  
♦KJ9874  
♣1065

♠J1095  
♥86  
♦A6  
♣Q9432

♠Q762  
♥A72  
♦Q32  
♣AKJ

♠A84  
♥QJ10954  
♦105  
♣87

Board (1) Av: NS=-40

N-S	E-W	Contract	N-S	E-W	IMP
3	13	1NT E 1		90	-2
5	8	2S E 4		170	-4
7	6	3H S 3	140		5
9	16	3S W 3		140	-3
11	17	2H S 2	110		4
14	4	1NT E 1		90	-2
15	10	2C N-3		150	-3
18	12	2H S 3	140		5

**2**

♠AJ654  
♥AQ10642  
♦4  
♣6

♠1073  
♥J985  
♦85  
♣K1092

♠8  
♥3  
♦KJ10972  
♣AQJ83

♠KQ92  
♥K7  
♦AQ63  
♣754

Board (2) Av: NS=+620

N-S	E-W	Contract	N-S	E-W	IMP
3	13	4S S 7	710		3
5	8	5S N 6	680		2
7	6	6Cx E-3	500		-3
9	16	4H N 5	650		1
11	17	5Cx E-3	500		-3
14	4	3S N 7	260		-8
15	10	5H N 6	680		2
18	12	6S N 7	1460		13

**3**

♠AK9743  
♥A754  
♦J2  
♣10

♠J82  
♥J103  
♦743  
♣Q974

♠6  
♥KQ9  
♦KQ1085  
♣A863

♠Q105  
♥862  
♦A96  
♣KJ52

Board (3) Av: NS=+100

N-S	E-W	Contract	N-S	E-W	IMP
3	13	4S N-1		50	-4
5	8	2S N 4	170		2
7	6	4S N 4	420		8
9	16	3S N-1		50	-4
11	17	2S N 4	170		2
14	4	4S N-1		50	-4
15	10	4S N-2		100	-5
18	12	4S N 4	420		8

**4**

♠KQ8  
♥AK5  
♦8653  
♣J42

♠63  
♥63  
♦J74  
♣AQ9876

♠AJ94  
♥QJ9872  
♦A10  
♣5

♠10752  
♥104  
♦KQ92  
♣K103

Board (4) Av: NS=-80

N-S	E-W	Contract	N-S	E-W	IMP
1	9	2H E 3		140	-2
5	16	3H E-1	100		5
7	13	1NT N-1		100	-1
10	2	2S S-3		300	-6
11	18	2H E 3		140	-2
14	8	2H E 2		110	-1
15	6	2S S-1		100	-1
17	12	2H E-1	100		5

**5**

♠AK10654  
♥A1064  
♦KQ2  
♣

♠832  
♥J  
♦954  
♣1086543

♠9  
♥K9853  
♦A7  
♣AKQJ2

♠QJ7  
♥Q72  
♦J10863  
♣97

Board (5) Av: NS=+290

N-S	E-W	Contract	N-S	E-W	IMP
1	9	5S N 5	650		8
5	16	4S N 5	650		8
7	13	4Sx N 5	990		12
10	2	3C W 4		130	-9
11	18	4C E 5		150	-10
14	8	5C E-1	50		-6
15	6	6Cx E-2	300		0
17	12	3S N 6	230		-2

**6**

♠1076  
♥K106  
♦Q53  
♣A1075

♠J4  
♥A843  
♦A108  
♣Q943

♠AK985  
♥QJ  
♦K64  
♣KJ8

♠Q32  
♥9752  
♦J972  
♣62

Board (6) Av: NS=-650

N-S	E-W	Contract	N-S	E-W	IMP
1	9	3NT E 5		660	0
5	16	3NT W 4		630	1
7	13	3NT W 4		630	1
10	2	3NT W 5		660	0
11	18	3NT E 4		630	1
14	8	3NT W 5		660	0
15	6	3NT E 5		660	0
17	12	3NT E 6		690	-1

**7**

♠AK92  
♥  
♦AK732  
♣QJ95

♠QJ7  
♥KJ10942  
♦8  
♣A62

♠864  
♥8653  
♦4  
♣K8743

♠1053  
♥AQ7  
♦QJ10965  
♣10

Board (7) Av: NS=+530

N-S	E-W	Contract	N-S	E-W	IMP
1	18	4Hx W-2		500	-1
3	11	6D N 6	1370		13
7	14	5D S 6	620		3
9	15	5D S 6	620		3
12	4	4D S 6	170		-8
13	8	5D S 6	620		3
16	10	3S S 3	140		-9
17	2	5D S 6	620		3

**8**

♠8752  
♥109  
♦AJ9  
♣10643

♠K109  
♥A3  
♦KQ10864  
♣Q5

♠Q6  
♥J87652  
♦2  
♣K872

♠AJ43  
♥KQ4  
♦753  
♣AJ9

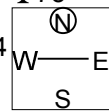
Board (8) Av: NS=-60

N-S	E-W	Contract	N-S	E-W	IMP
1	18	2S N-1		50	0
3	11	2S N-1		50	0
7	14	2H E 2		110	-2
9	15	2S N 2	110		5
12	4	2H E 2		110	-2
13	8	2H E 2		110	-2
16	10	2S N-2		100	-1
17	2	2D W-1	50		3

9

♠AKQ53  
♥98  
♦7543  
♣75

♠108 ♠64  
♥AKQ64 ♥J10732  
♦Q62 ♦K8  
♣J109 ♣A864



♠J972  
♥5  
♦AJ109  
♣KQ32

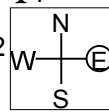
Board (9) Av: NS=+370

N-S	E-W	Contract	N-S	E-W	IMP
1	18	4Sx	N 4	590	6
3	11	3S	N 4	170	-5
7	14	4S	N 4	420	2
9	15	4Sx	N 4	590	6
12	4	3S	N 4	170	-5
13	8	3S	S 4	170	-5
16	10	4S	N 4	420	2
17	2	4S	N 4	420	2

10

♠AQ10986  
♥A4  
♦AQ72  
♣7

♠72 ♠J543  
♥Q9652 ♥K107  
♦105 ♦K964  
♣9543 ♣J2



♠K  
♥J83  
♦J83  
♣AKQ1086

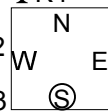
Board (10) Av: NS=+510

N-S	E-W	Contract	N-S	E-W	IMP
1	10	3NT	S 5	660	4
3	16	4S	N 5	650	4
5	17	6S	N-2	200	-12
9	2	4S	N 5	650	4
11	13	5C	N 6	620	3
14	12	6NT	N 7	1470	14
15	4	6C	S-3	300	-13
18	6	4S	N 6	680	5

11

♠A9874  
♥98  
♦A953  
♣K4

♠106 ♠J532  
♥10432 ♥K6  
♦J64 ♦102  
♣AJ103 ♣Q9652



♠KQ  
♥AQJ75  
♦KQ87  
♣87

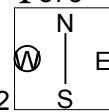
Board (11) Av: NS=+330

N-S	E-W	Contract	N-S	E-W	IMP
1	10	4S	N 5	450	3
3	16	3D	S 6	170	-4
5	17	3NT	S 5	460	4
9	2	6S	N-1	50	-9
11	13	3NT	N 3	400	2
14	12	3NT	S 3	400	2
15	4	3D	S 5	150	-5
18	6	3NT	N 3	400	2

12

♠Q  
♥J987  
♦AQJ105  
♣873

♠94 ♠KJ8653  
♥KQ4 ♥A6  
♦K432 ♦97  
♣A1042 ♣KQ6



♠A1072  
♥10532  
♦86  
♣J95

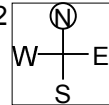
Board (12) Av: NS=-40

N-S	E-W	Contract	N-S	E-W	IMP
1	10	3NT	W-1	50	3
3	16	2C	E-1	50	3
5	17	4S	E 4	420	-9
9	2	4S	E-2	100	4
11	13	4S	E-1	50	3
14	12	2D	W 2	90	-2
15	4	4S	E-2	100	4
18	6	4S	E 4	420	-9

13

♠A4  
♥AJ9  
♦AKQ10  
♣A874

♠108632 ♠KQJ7  
♥10642 ♥8  
♦97 ♦8532  
♣J10 ♣Q963



♠95  
♥KQ753  
♦J64  
♣K52

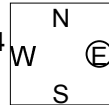
Board (13) Av: NS=+940

N-S	E-W	Contract	N-S	E-W	IMP
1	13	6H	N 6	1430	10
3	12	4H	N 6	680	-6
5	18	4H	N 7	710	-6
7	15	6NT	N 7	1470	11
11	4	4H	N 6	680	-6
14	2	4H	S 6	680	-6
16	8	3NT	N 7	720	-6
17	6	6H	N 6	1430	10

14

♠K65  
♥Q10  
♦8653  
♣8653

♠J9 ♠Q103  
♥K987654 ♥AJ2  
♦A102 ♦K94  
♣9 ♣J1042



♠A8742  
♥3  
♦QJ7  
♣AKQ7

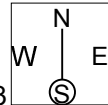
Board (14) Av: NS=-90

N-S	E-W	Contract	N-S	E-W	IMP
1	13	4H	W-1	50	4
3	12	4S	S-2	100	0
5	18	4H	W 4	420	-8
7	15	2S	S 2	110	5
11	4	4Sx	S-2	300	-5
14	2	2S	S 2	110	5
16	8	3H	W 4	170	-2
17	6	3S	S-2	100	0

15

♠8542  
♥KQJ7  
♦9743  
♣A

♠QJ10 ♠K963  
♥642 ♥A8  
♦KQ ♦10652  
♣108763 ♣KJ5



♠A7  
♥10953  
♦AJ8  
♣Q942

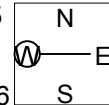
Board (15) Av: NS=+70

N-S	E-W	Contract	N-S	E-W	IMP
1	13	1NT	W-2	100	1
3	12	1NT	W-2	100	1
5	18	2H	S 2	110	1
7	15	1NT	W-2	100	1
11	4	Passout			-2
14	2	Passout			-2
16	8	4H	S-3	300	-9
17	6	3C	W-2	100	1

16

♠1093  
♥AK1075  
♦A5  
♣J43

♠J865 ♠AQ74  
♥J2 ♥6  
♦932 ♦QJ876  
♣Q976 ♣AK5



♠K2  
♥Q9843  
♦K104  
♣1082

Board (16) Av: NS=-50

N-S	E-W	Contract	N-S	E-W	IMP
1	14	5S	W-3	300	8
3	15	4H	N-1	50	0
5	7	4H	N-1	50	0
8	6	4H	N-1	50	0
9	18	5Hx	N-2	300	-6
13	2	4H	N-1	50	0
16	4	4H	N-1	50	0
17	10	4H	N-1	50	0

**17** ♠Q109  
♥QJ  
♦1086  
♣A10765

♠A8652 (N)  
♥876  
♦74  
♣KQ8

♠K952 (E)  
♥AK2  
♦J942  
♣J942

♠K74  
♥A1043  
♦QJ953  
♣3

Board (17) Av: NS=+70

N-S	E-W	Contract	N-S	E-W	IMP
1	14	1NT E-2	100		1
3	15	1NT N 3	150		2
5	7	3NT E-3	150		2
8	6	1NT E-1	50		-1
9	18	1NT E 1		90	-4
13	2	1NT N 2	120		2
16	4	1NT E 1		90	-4
17	10	2S W-2	100		1

**18** ♠KQ98  
♥AQ2  
♦J2  
♣QJ102

♠8643  
♥Q98  
♦AK9653

♠AJ103 (N)  
♥75  
♦AK1065  
♣87

♠76542  
♥KJ109  
♦743  
♣4

Board (18) Av: NS=-100

N-S	E-W	Contract	N-S	E-W	IMP
1	14	2S S-1	100		0
3	15	2D E 2	90		0
5	7	2D E 2	90		0
8	6	2D E 4	130		-1
9	18	1NT W 2	120		-1
13	2	2D E 3	110		0
16	4	2D E 2	90		0
17	10	2S S-1	100		0

**19** ♠10853  
♥64  
♦1075  
♣J642

♠KQ92  
♥1075  
♦AKQ  
♣K103

♠J4 (N)  
♥KQ83  
♦J632  
♣875

♠A76  
♥AJ92  
♦984  
♣AQ9

Board (19) Av: NS=-130

N-S	E-W	Contract	N-S	E-W	IMP
1	17	1NTxS-2	300		-5
3	10	1NT S-2	100		1
5	11	1NT S-2	100		1
7	16	2H E-1	100		6
9	4	1NT S-1	50		2
12	6	1NT S-2	100		1
15	8	1NTxS-2	300		-5
18	2	2C N-2	100		1

**20** ♠K1083  
♥A104  
♦J92  
♣J83

♠J76  
♥6  
♦A853  
♣AK974

♠AQ942 (N)  
♥32  
♦Q104  
♣Q102

♠5  
♥KQJ9875  
♦K76  
♣65

Board (20) Av: NS=-570

N-S	E-W	Contract	N-S	E-W	IMP
1	17	4S E 5	650		-2
3	10	4S E 5	650		-2
5	11	4S E 4	620		-2
7	16	3H S-2	200		9
9	4	4S E 5	650		-2
12	6	4S E 5	650		-2
15	8	3H S-1	100		10
18	2	4Sx E 6	1190		-12

**21** ♠KJ  
♥AQJ  
♦AKQ764  
♣Q8

♠A965  
♥108643  
♦J1085  
♣

♠Q108 (N)  
♥K52  
♦2  
♣KJ9653

♠7432  
♥97  
♦93  
♣A10742

Board (21) Av: NS=+370

N-S	E-W	Contract	N-S	E-W	IMP
1	17	3NT N 3	600		6
3	10	3NT N 3	600		6
5	11	3NT N-1		100	-10
7	16	3NT N 4	630		6
9	4	3NT S 4	630		6
12	6	1D N 3	110		-6
15	8	3D N 4	130		-6
18	2	1D N 4	130		-6

**22** ♠K94  
♥K82  
♦K98  
♣9654

♠AJ5  
♥965  
♦J653  
♣QJ2

♠Q873 (N)  
♥Q73  
♦AQ104  
♣73

♠1062  
♥AJ104  
♦72  
♣AK108

Board (22) Av: NS=+90

N-S	E-W	Contract	N-S	E-W	IMP
1	7	1NT N 1	90		0
3	14	1NT N-1		50	-4
5	12	1NT N 1	90		0
8	2	1NT N 3	150		2
9	17	Passout			-3
11	6	1NT N 2	120		1
13	4	1NT N 2	120		1
18	10	1NT N 2	120		1

**23** ♠KJ6  
♥J5  
♦AJ753  
♣A85

♠10543  
♥A9862  
♦QJ109  
♣

♠AQ987 (N)  
♥743  
♦KQ  
♣K72

♠2  
♥KQ10  
♦1098642  
♣643

Board (23) Av: NS=-420

N-S	E-W	Contract	N-S	E-W	IMP
1	7	5Dx N-2	500		-2
3	14	5Dx N-2	500		-2
5	12	3S E 5	200		6
8	2	3S E 3	140		7
9	17	4S E 4	620		-5
11	6	5Dx S-2	500		-2
13	4	5Dx N-1	200		6
18	10	4S E 4	620		-5

**24** ♠KQ954  
♥10  
♦98  
♣Q6543

♠8  
♥J753  
♦A10743  
♣987

♠AJ76 (N)  
♥A982  
♦QJ5  
♣K2

♠1032  
♥KQ64  
♦K62  
♣AJ10

Board (24) Av: NS=-100

N-S	E-W	Contract	N-S	E-W	IMP
1	7	3S N-1	50		2
3	14	1NT E 3	150		-2
5	12	1NT E 1	90		0
8	2	1NT E 1	90		0
9	17	1NT E 3	150		-2
11	6	1NT E 1	90		0
13	4	1NT E 3	150		-2
18	10	3H W-1	50		4

**25**

♠ J42  
♥ KQ2  
♦ AK  
♣ AQ862

♠ KQ5  
♥ A1064  
♦ QJ75  
♣ KJ

♠ 1097  
♥ J83  
♦ 9432  
♣ 973

♠ A863  
♥ 975  
♦ 1086  
♣ 1054

Diagram: A 3x3 grid with N, S, E, W directions. A circled 'N' is in the top-middle cell, and a circled 'S' is in the bottom-middle cell.

**26**

♠ Q3  
♥ Q3  
♦ 109853  
♣ A853

♠ K62  
♥ A10974  
♦ J  
♣ QJ107

♠ 974  
♥ K6  
♦ AK7642  
♣ K6

♠ AJ1085  
♥ J852  
♦ Q  
♣ 942

Diagram: A 3x3 grid with N, S, E, W directions. A circled 'N' is in the top-middle cell, and a circled 'E' is in the top-right cell.

**27**

♠ 10972  
♥ J1054  
♦ KJ  
♣ Q76

♠ AQ853  
♥ KQ73  
♦ A  
♣ A85

♠ J6  
♥ 987432  
♣ K10932

♠ K4  
♥ A9862  
♦ Q1065  
♣ J4

Diagram: A 3x3 grid with N, S, E, W directions. A circled 'N' is in the top-middle cell, and a circled 'S' is in the bottom-middle cell.

Board (25) Av: NS=+210

N-S	E-W	Contract	N-S	E-W	IMP
1	8	3H	W-3	300	3
3	9	2NT	N 3	150	-2
5	15	2NT	N 3	150	-2
7	2	3NT	N 3	400	5
10	4	2NT	N 3	150	-2
11	14	1NT	W-2	200	0
13	12	1NT	W-3	300	3
16	6	1D	E-1	100	-3

Board (26) Av: NS=+100

N-S	E-W	Contract	N-S	E-W	IMP
1	8	3D	E-1	100	0
3	9	2NT	W-1	100	0
5	15	3D	E-2	200	3
7	2	3NT	W-1	100	0
10	4	2NT	W 2	120	-6
11	14	3NT	W-2	200	3
13	12	2H	W 2	110	-5
16	6	3NT	E-2	200	3

Board (27) Av: NS=-120

N-S	E-W	Contract	N-S	E-W	IMP
1	8	2S	W 5	200	-2
3	9	2H	S 2	110	6
5	15	3C	W 4	130	0
7	2	4S	W-1	50	5
10	4	3Hx	S-3	500	-9
11	14	2H	S-2	100	1
13	12	3S	W 4	170	-2
16	6	1S	W 3	140	-1