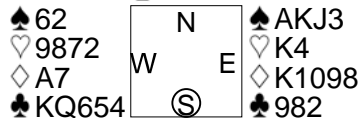


# 11

♠754  
♥AQJ106  
♦J652  
♣A



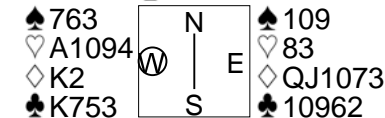
♠Q1098  
♥53  
♦Q43  
♣J1073

Av: NS=-30

N-S	E-W	Contract	L	N-S	E-W	IMP
1	8	3NT	E-3 H5	150		5
8	1	3C	W 3 D2		110	-2
2	5	3C	W 4 S4		130	-3
5	2	3C	W 3 S7		110	-2
3	14	3C	W-1 S4	50		2
14	3	3NT	E-3 H5	150		5
4	9	2C	W 2 D5		90	-2
9	4	3C	W 3 S4		110	-2
6	19	3C	W 3 D5		110	-2
19	6	3C	W 3 D5		110	-2
7	23	2C	W 2 HQ		90	-2
23	7	3C	W-1 S4	50		2
10	17	3C	W-1 D5	50		2
17	10	2C	W 3 S4		110	-2
11	16	3C	W-1 S4	50		2
16	11	2NT	E-2 H3	100		4
12	25	3C	W 3 D4		110	-2
25	12	3NT	E-2 H5	100		4
13	15	2D	N-4 SA		200	-5
15	13	3C	W-1 S4	50		2
18	22	3C	W 3 S4		110	-2
22	18	3C	W 3 S4		110	-2
20	21	3C	W-1 S4	50		2
21	20	3NT	W-2 HQ	100		4
24	26	2C	W 3 HA		110	-2
26	24	3C	W-1 D5	50		2

# 12

♠AQ852  
♥KJ765  
♦65  
♣A



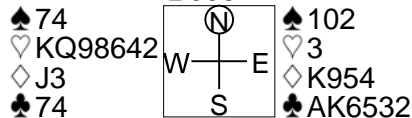
♠KJ4  
♥Q2  
♦A984  
♣QJ84

Av: NS=+630

N-S	E-W	Contract	L	N-S	E-W	IMP
1	8	6S	N 6 C6	1430		13
8	1	4S	S 5 DK	650		1
2	5	4S	N 5 D2	650		1
5	2	4Sx	N 5 DJ	990		8
3	14	6S	N-2 DQ		200	-13
14	3	4S	N 5 D5	650		1
4	9	4S	N 5 DQ	650		1
9	4	4S	N 5 DQ	650		1
6	19	4S	N 5 DQ	650		1
19	6	4S	N 5 DQ	650		1
7	23	4S	N 4 DQ	620		0
23	7	5Dx	E-6 S4	1400		13
10	17	4S	N 5 DQ	650		1
17	10	4S	N 5 DQ	650		1
11	16	4S	S 6 S2	680		2
16	11	4S	N 6 H6	680		2
12	25	4S	N 5 DQ	650		1
25	12	6S	N-2 DQ		200	-13
13	15	4S	N 5 DQ	650		1
15	13	4S	S 5 S4	650		1
18	22	4S	N 5 DQ	650		1
22	18	4S	N 5 DQ	650		1
20	21	4S	N 5 DQ	650		1
21	20	4S	N 4 DQ	620		0
24	26	6S	N-2 DJ		200	-13
26	24	4S	N 6 H8	680		2

# 13

♠AKQ965  
♥7  
♦A108  
♣J98



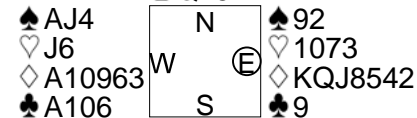
♠J83  
♥AJ105  
♦Q762  
♣Q10

Av: NS=+510

N-S	E-W	Contract	L	N-S	E-W	IMP
1	8	4S	N 4 H3	620		3
8	1	4S	N 4 CK	620		3
2	5	4S	N 4 D2	620		3
5	2	2S	N 4 S3	170		-8
3	14	2S	N 4 CA	170		-8
14	3	4S	N 4 CA	620		3
4	9	3Hx	W-1 SA	200		-7
9	4	3S	N 4 H3	170		-8
6	19	3Hx	W-2 SA	500		0
19	6	4S	N 4 CA	620		3
7	23	3Hx	W-1 SA	200		-7
23	7	4S	N 4 H3	620		3
10	17	3Hx	W-2 SA	500		0
17	10	4S	N 4 CA	620		3
11	16	4S	N 4 CK	620		3
16	11	4S	N 4 S6	620		3
12	25	3S	N 4 H3	170		-8
25	12	4S	N 4 CK	620		3
13	15	3Hx	W-2 SK	500		0
15	13	4S	N 4 CA	620		3
18	22	4S	N 4 CA	620		3
22	18	4S	N 4 CA	620		3
20	21	4S	N 4 CA	620		3
21	20	4S	N 4 H3	620		3
24	26	4S	N 4 H3	620		3
26	24	3NT	N 5 C6	660		4

# 14

♠K108765  
♥AQ2  
♦  
♣Q752



♠Q3  
♥K9854  
♦7  
♣KJ843

Av: NS=+10

N-S	E-W	Contract	L	N-S	E-W	IMP
1	8	5D	E-1 C3	50		1
8	1	5Dx	E-1 D5	100		3
2	5	4NTxW-2	HA	300		7
5	2	5S	N-1 C9		50	-2
3	14	3NT	W 3 S7		400	-9
14	3	5Dx	E-1 SQ	100		3
4	9	5Dx	E-1 SQ	100		3
9	4	4NTxW-1	C2	100		3
6	19	5D	E-1 H4	50		1
19	6	3NT	W 3 S7		400	-9
7	23	3NT	W 3 S6		400	-9
23	7	3NT	W 3 S5		400	-9
10	17	5Dx	E-1 H4	100		3
17	10	5Dx	E-1 SQ	100		3
11	16	4NT	W-1 S6	50		1
16	11	4S	N 4 C9	420		9
12	25	5D	E-1 SQ	50		1
25	12	3NT	W 3 S6		400	-9
13	15	5D	E-1 H4	50		1
15	13	4S	N 4 C9	420		9
18	22	4NTxW-1	S7	100		3
22	18	4Dx	E-1 SQ	100		3
20	21	4NT	W-2 HA	100		3
21	20	5Sx	N-1 C9		100	-3
24	26	5Dx	E-1 SQ	100		3
26	24	5Dx	E-1 SQ	100		3

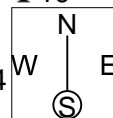
# 15

♠ AK8642  
♥ Q9  
♦ Q652  
♣ 10

♠ 109  
♥ KJ7653  
♦ J98  
♣ A4

♠ 53  
♥ 1084  
♦ 3  
♣ KQJ9876

♠ QJ7  
♥ A2  
♦ AK1074  
♣ 532



Av: NS=-240

N-S	E-W	Contract	L	N-S	E-W	IMP
1	8	4H	E 4 D3		420	-5
8	1	4H	E 4 CK		420	-5
2	5	3NT	E 4 S5		430	-5
5	2	4H	E 4 D4		420	-5
3	14	4H	E 4 CK		420	-5
14	3	3C	S-1 DK	100		4
4	9	4H	E-1 S5	50		7
9	4	4D	W-2 SA	100		8
6	19	4H	E 4 D3		420	-5
19	6	4H	E 5 D3		450	-5
7	23	4H	E 4 D3		420	-5
23	7	4H	E-1 S5	50		7
10	17	4H	W-1 SA	50		7
17	10	4H	E 4 CK		420	-5
11	16	3C	S-1 DA		100	4
16	11	3H	E 4 D3		170	2
12	25	4Hx	E 4 CK		590	-8
25	12	4H	E 4 CK		420	-5
13	15	3C	S-1 DA		100	4
15	13	4H	W-1 SA	50		7
18	22	3C	S 3 DK	110		8
22	18	4H	E 4 D2		420	-5
20	21	4H	E 5 CK		450	-5
21	20	3H	E 4 D3		170	2
24	26	4H	E-1 S5	50		7
26	24	4H	E 4 D3		420	-5

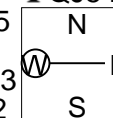
# 16

♠ AK87  
♥ Q1065  
♦ 7  
♣ QJ54

♠ 10  
♥ AK  
♦ J1098652  
♣ K63

♠ J432  
♥ J8432  
♦ 4  
♣ 987

♠ Q965  
♥ 97  
♦ AKQ3  
♣ A102



Av: NS=-420

N-S	E-W	Contract	L	N-S	E-W	IMP
1	8	6D	W-1 SA	100		11
8	1	3NT	W 6 C3		690	-7
2	5	6D	W 6 D2		1370	-14
5	2	5D	E 5 S3		600	-5
3	14	6D	E-1 S3	100		11
14	3	5Dx	E 5 S3		750	-8
4	9	6Dx	E-1 S3	200		12
9	4	6D	E-1 S3	100		11
6	19	6D	W-1 SA	100		11
19	6	6D	W 6 SA		1370	-14
7	23	5D	W 5 H6		600	-5
23	7	3NT	W 5 SK		660	-6
10	17	5D	E 6 C7		620	-5
17	10	5D	E 6 S3		620	-5
11	16	5D	E 6 C7		620	-5
16	11	6D	E-1 S2	100		11
12	25	5Hx	S-4 DA		800	-9
25	12	6D	W-1 SA	100		11
13	15	6Hx	S-4 DA		800	-9
15	13	4Hx	S-3 DK		500	-2
18	22	5D	W 5 SK		600	-5
22	18	6D	W-1 SA	100		11
20	21	6Hx	S-4 S6		800	-9
21	20	6D	W-1 SA	100		11
24	26	5Dx	W 6 SA		950	-11
26	24	6D	E-1 S3	100		11

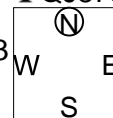
# 17

♠ Q843  
♥ AK4  
♦ 10  
♣ QJ873

♠ KJ5  
♥ J652  
♦ AKQ5  
♣ K4

♠ 762  
♥ 97  
♦ 986432  
♣ 106

♠ A109  
♥ Q1083  
♦ J7  
♣ A952



Av: NS=-450

N-S	E-W	Contract	L	N-S	E-W	IMP
1	8	4H	W 5 DT		450	0
8	1	4H	E 5 CT		450	0
2	5	4H	E 5 CT		450	0
5	2	3NT	E 5 D9		460	0
3	14	4H	W 5 DT		450	0
14	3	4H	W 5 DT		450	0
4	9	4H	E 5 CT		450	0
9	4	4H	W 5 DT		450	0
6	19	3NT	E 5 CT		460	0
19	6	4H	E 5 CT		450	0
7	23	4H	E 5 D3		450	0
23	7	4H	W 5 DT		450	0
10	17	4H	E 5 CT		450	0
17	10	4H	E 5 CT		450	0
11	16	4H	E 5 CT		450	0
16	11	3NT	E 5 CT		460	0
12	25	4H	E 5 CT		450	0
25	12	4H	W 5 DT		450	0
13	15	3NT	E 4 CT		430	1
15	13	3NT	E 5 CT		460	0
18	22	3NT	E 5 D3		460	0
22	18	4H	E 5 CT		450	0
20	21	4H	E 5 CT		450	0
21	20	4H	E 5 CT		450	0
24	26	4H	E 5 CT		450	0
26	24	2Sx	S-4 ST		800	-8

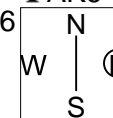
# 18

♠ J54  
♥ KJ109752  
♦  
♣ AK6

♠ A9  
♥ A8  
♦ AK8742  
♣ 1042

♠ Q832  
♥ Q  
♦ Q105  
♣ QJ953

♠ K1076  
♥ 643  
♦ J963  
♣ 87



Av: NS=+110

N-S	E-W	Contract	L	N-S	E-W	IMP
1	8	3H	N 3 DK		140	1
8	1	3NT	E-4 HQ		200	3
2	5	4D	E-1 D2		50	-2
5	2	3H	N 3 DK		140	1
3	14	3D	E 3 HQ		110	-6
14	3	3H	N 4 DA		170	2
4	9	4D	W-1 CA		50	-2
9	4	3H	N 3 DK		140	1
6	19	3H	N 3 DA		140	1
19	6	3H	N 3 DA		140	1
7	23	3H	N 3 DA		140	1
23	7	3H	N 3 DA		140	1
10	17	3H	N 3 DA		140	1
17	10	4H	N-1 DA		100	-5
11	16	3NT	E-4 HQ		200	3
16	11	4H	N-1 DA		100	-5
12	25	3H	N 3 DA		140	1
25	12	4H	N 5 DK		650	11
13	15	3H	N 3 DA		140	1
15	13	4D	E-1 HQ		50	-2
18	22	3H	N 3 DA		140	1
22	18	4D	E-1 HQ		50	-2
20	21	3NT	E-4 HQ		200	3
21	20	4D	E-1 HQ		50	-2
24	26	4H	N-1 DA		100	-5
26	24	5Dx	E-2 HQ		300	5

19

♠ K9  
♥ Q1097532  
♦ 53  
♣ 74

♠ AQ105  
♥ 8  
♦ AK1092  
♣ 1032

N	♠ J743
W	♥ K6
E	♦ 84
S	♣ AJ986

♠ 862  
♥ AJ4  
♦ QJ76  
♣ KQ5

20

♠ K  
♥ KQ1032  
♦ 752  
♣ AK105

♠ Q985  
♥ J6  
♦ 109643  
♣ J8

N	♠ 10632
W	♥ 87
E	♦ AKQ8
S	♣ 642

♠ AJ74  
♥ A954  
♦ J  
♣ Q973

Av: NS=-100

N-S	E-W	Contract	L	N-S	E-W	IMP
1	8	4S	W-1 C7	100		5
8	1	4S	W-1 D5	100		5
2	5	5Hx	S-2 C2		300	-5
5	2	4Hx	N-2 D8		300	-5
3	14	5Hx	N-2 S3		300	-5
14	3	3H	S-1 DA		50	2
4	9	3H	N-1 S4		50	2
9	4	4H	N-2 S4		100	0
6	19	3S	W 3 D6		140	-1
19	6	2S	W 3 D5		140	-1
7	23	3S	W 3 D5		140	-1
23	7	3S	W 3 H9		140	-1
10	17	3NT	S-1 DA		50	2
17	10	4S	W-1 C7	100		5
11	16	3S	E 3 HA		140	-1
16	11	5Hx	S-3 DK		500	-9
12	25	4Hx	N-1 D8		100	0
25	12	4H	S-2 DK		100	0
13	15	5Hx	N-2 S3		300	-5
15	13	4S	E-2 S2	200		7
18	22	4S	W-1 D5	100		5
22	18	4S	W-1 D5	100		5
20	21	4S	E 4 HA		620	-11
21	20	4S	E-1 C4	100		5
24	26	3NT	E-3 HA	300		9
26	24	4Hx	N-2 D8		300	-5

Av: NS=+1240

N-S	E-W	Contract	L	N-S	E-W	IMP
1	8	6H	N 6 DA	1430		5
8	1	6H	N 6 H2	1430		5
2	5	6H	N 6 D2	1430		5
5	2	6H	N 6 DA	1430		5
3	14	6H	N 6 DK	1430		5
14	3	6H	N 6 DA	1430		5
4	9	6H	N 6 DK	1430		5
9	4	6H	N 6 DK	1430		5
6	19	6H	N 6 DK	1430		5
19	6	6H	N 6 DA	1430		5
7	23	4H	N 6 DK	680		-11
23	7	6H	N 6 DA	1430		5
10	17	6H	N 6 DK	1430		5
17	10	4H	N 6 DA	680		-11
11	16	6H	N 6 DK	1430		5
16	11	4H	S 6 D6	680		-11
12	25	6H	N 6 H7	1430		5
25	12	6H	N 6 DA	1430		5
13	15	4H	N 6 DA	680		-11
15	13	4H	N 6 DK	680		-11
18	22	6H	N 6 DK	1430		5
22	18	6H	N 6 DK	1430		5
20	21	4H	N 6 DK	680		-11
21	20	4H	N 6 DA	680		-11
24	26	6H	N 6 DA	1430		5
26	24	6H	N 6 DA	1430		5