

1

♠ 102
♥ A753
♦ KQJ83
♣ A5

♠ AQJ7
♥ 104
♦ A102
♣ K873

♠ K964
♥ K62
♦ 74
♣ QJ94

♠ 853
♥ QJ98
♦ 965
♣ 1062

Board (1) Av: NS=-130

Contract	N-S	E-W	IMP	Tie
1NT N 2	120		6	1
3NT W-2	100		6	1
3NT E-2	100		6	1
1NT N 1	90		6	1
1NT W-1	50		5	2
3H N-1		50	2	1
1NT W 1		90	1	9
1NT N-2		100	1	8
1NT W 2		120	0	9
1NT W 3		150	-1	1
3S W 4		170	-1	2
3S E 4		170	-1	1
2S W 4		170	-1	2
2S E 4		170	-1	1
4S W 4		420	-7	5
4S E 4		420	-7	1

2

♠ AKQ1076
♥ 963
♦ A9
♣ 63

♠ 932
♥ QJ102
♦ K42
♣ QJ7

♠ J8
♥ K54
♦ Q106
♣ AK1092

♠ 54
♥ A87
♦ J8753
♣ 854

Board (2) Av: NS=+30

Contract	N-S	E-W	IMP	Tie
1Sx N 2	360		8	2
2S N 3	140		3	1
2S N 2	110		2	20
1NT W-2	100		2	2
1NT E-2	100		2	1
4H W-1	50		1	1
1NT W-1	50		1	2
3S N-1		100	-4	1
3C W 3		110	-4	2
3C E 3		110	-4	12
2C E 3		110	-4	1
3H W 3		140	-5	1

3

♠ 10954
♥ J3
♦ 10982
♣ 752

♠ AKJ873
♥ AK4
♦ A53
♣ 10

♠ 6
♥ Q9762
♦ QJ74
♣ A98

♠ Q2
♥ 1085
♦ K6
♣ KQJ643

Board (3) Av: NS=-920

Contract	N-S	E-W	IMP	Tie
6H E-1	100		14	2
3S E 6		230	12	1
2S W 6		230	12	1
2Cx S-2		300	12	1
3NT E 4		630	7	1
4S W 5		650	7	1
4S E 5		650	7	1
4H E 5		650	7	3
3NT E 5		660	6	4
5S W 6		680	6	1
4S W 6		680	6	6
4S E 6		680	6	1
4H E 6		680	6	4
4H E 7		710	5	5
6S W 6		1430	-11	1
6H W 6		1430	-11	1
6H E 6		1430	-11	4
6H E 7		1460	-11	3
7H E 7		2210	-15	5

4

♠ 10864
♥ 75
♦ J63
♣ K1095

♠ 52
♥ A42
♦ 10872
♣ 8743

♠ AK93
♥ K863
♦ KQ9
♣ A2

♠ QJ7
♥ QJ109
♦ A54
♣ QJ6

Board (4) Av: NS=+40

Contract	N-S	E-W	IMP	Tie
3NT E-3	300		6	5
3NT W-2	200		4	1
3NT E-2	200		4	10
3NT E-1	100		2	3
3D E-1	100		2	1
2NT E-1	100		2	1
1NT E-1	100		2	2
1NT W 1		90	-4	1
1NT E 1		90	-4	4
1D E 2		90	-4	1
2S N-1		100	-4	1
1S N-1		100	-4	1
2D E 3		110	-4	1
1H E 2		110	-4	1
1D E 3		110	-4	5
2NT E 2		120	-4	2
1NT E 2		120	-4	1
2D E 4		130	-5	1
2NT E 3		150	-5	1
1D E 5		150	-5	1
1H E 4		170	-5	1
1NT E 4		180	-6	1

5

♠ 8753
♥ 5
♦ K862
♣ KQ82

♠ J109 ♠ KQ42
♥ 872 ♥ A963
♦ 54 ♦ 97
♣ J9754 ♣ A103

	N	
W		E
	S	

♠ A6
♥ KQJ104
♦ AQJ103
♣ 6

Board (5) Av: NS=+140

Contract	N-S	E-W	IMP	Tie
3NT N 5	660		11	4
4H S 4	620		10	1
5D S 5	600		10	3
5D N 5	600		10	2
3NT N 3	600		10	1
2H S 4	170		1	2
4D N 5	150		0	2
3D S 5	150		0	4
3D N 5	150		0	2
2D S 5	150		0	2
4D N 4	130		0	1
1H S 1	80		-2	1
6H S-1		100	-6	1
6D S-1		100	-6	1
5D S-1		100	-6	2
5D N-1		100	-6	12
5C N-1		100	-6	1
3NT S-1		100	-6	1
3NT N-1		100	-6	3

6

♠ A83
♥ A2
♦ KJ965
♣ AQ6

♠ KQ752 ♠ 4
♥ 73 ♥ K1085
♦ AQ432 ♦ 8
♣ K ♣ 10985432

	N	
W	—	E
	S	

♠ J1096
♥ QJ964
♦ 107
♣ J7

Board (6) Av: NS=+250

Contract	N-S	E-W	IMP	Tie
3DX W-5	1400		15	2
5CX E-4	1100		13	1
3DX W-4	1100		13	1
4CX E-3	800		11	1
3SX W-3	800		11	1
3NT N 4	430		5	1
3NT N 3	400		4	4
3C E-3	300		2	1
2S W-3	300		2	1
3C E-2	200		-2	4
2S W-2	200		-2	1
2NT N 4	180		-2	1
2H N 4	170		-2	2
2NT N 3	150		-3	1
2H S 3	140		-3	4
2H N 3	140		-3	5
1NT N 2	120		-4	1
3D N 3	110		-4	1
2H S 2	110		-4	1
3C E-1	100		-4	1
2D N 2	90		-4	3
4H S-1		50	-7	2
3NT S-1		50	-7	1
3NT N-1		50	-7	2
3D N-1		50	-7	1
3NT N-2		100	-8	1
3C N-3		150	-9	1

7

♠ 94
♥ 10532
♦ AKJ9532

♠ 1087 ♠ KQJ52
♥ AQ62 ♥ KJ87
♦ J84 ♦ AK6
♣ Q104 ♣ 7

	N	
W	+	E
	S	

♠ A9643
♥ 1053
♦ Q97
♣ 86

Board (7) Av: NS=-490

Contract	N-S	E-W	IMP	Tie
3Cx N 4	870		16	1
4Cx N 4	710		15	1
3NT W-2	200		12	1
5H W-1	100		11	2
4S W-1	100		11	1
4S E-1	100		11	2
2S E 4		170	8	1
4S W 4		620	-4	1
4S E 4		620	-4	4
4H W 4		620	-4	7
4H E 4		620	-4	2
5H W 5		650	-4	1
4H W 5		650	-4	21
4H E 5		650	-4	1

8

♠ AKQ
♥ 8
♦ KJ10654
♣ A92

♠ 654 ♠ J87
♥ AK1064 ♥ QJ952
♦ 92 ♦ A7
♣ 764 ♣ J85

	N	
W		E
	S	

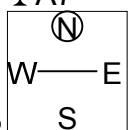
♠ 10932
♥ 73
♦ Q83
♣ KQ103

Board (8) Av: NS=+280

Contract	N-S	E-W	IMP	Tie
4Hx E-4	800		11	4
4S S 5	450		5	1
4S S 4	420		4	3
4S N 4	420		4	1
5D N 5	400		3	15
5C S 5	400		3	1
3S N 5	200		-2	1
4D S 5	150		-4	1
4D N 5	150		-4	3
3D S 5	150		-4	1
3D N 5	150		-4	6
2D S 5	150		-4	1
3H E-2	100		-5	1
6D N-1		50	-8	1
4S N-1		50	-8	1
3NT S-2		100	-9	5

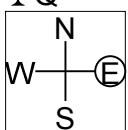
9

♠ 9542
 ♥ J62
 ♦ 8654
 ♣ A7
 ♠ J106
 ♥ 105
 ♦ AQ10
 ♣ QJ643
 ♠ K87
 ♥ AKQ4
 ♦ K7
 ♣ 10952
 ♠ AQ3
 ♥ 9873
 ♦ J932
 ♣ K8



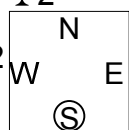
10

♠ K54
 ♥ A9862
 ♦ 9762
 ♣ Q
 ♠ 762
 ♥ Q4
 ♦ K5
 ♣ 1086432
 ♠ AQ1093
 ♥ 3
 ♦ 1083
 ♣ AKJ9
 ♠ J8
 ♥ KJ1075
 ♦ AQJ4
 ♣ 75



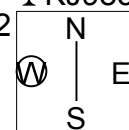
11

♠ AQ10642
 ♥ A9
 ♦ AJ54
 ♣ 2
 ♠ J3
 ♥ KQ7632
 ♦ 107
 ♣ A108
 ♠ K9
 ♥ 1054
 ♦ KQ86
 ♣ K943
 ♠ 875
 ♥ J8
 ♦ 932
 ♣ QJ765



12

♠ 8
 ♥ 32
 ♦ Q952
 ♣ KJ9832
 ♠ QJ96432
 ♥ J7
 ♦ 7
 ♣ AQ7
 ♠ A1075
 ♥ AK54
 ♦ J4
 ♣ 654
 ♠ K
 ♥ Q10986
 ♦ AK10863
 ♣ 10



Board (9) Av: NS=-600

Contract	N-S	E-W	IMP	Tie
3NT W 3		600	0	1
3NT E 3		600	0	38
3NT E 4		630	-1	6
3NT W 5		660	-2	1

Board (10) Av: NS=-160

Contract	N-S	E-W	IMP	Tie
4Hx S 4	790		14	1
4Sx E-1	200		8	1
3H S 3	140		7	1
3H N 3	140		7	1
4S E-1	100		6	7
1S E 1		80	2	1
4H S-1		100	2	14
4H N-1		100	2	1
3S E 3		140	1	6
3S E 4		170	0	2
2S W 4		170	0	1
5Hx S-2		500	-8	2
4S E 4		620	-10	5
4S E 6		680	-11	1
4C N-7		700	-11	1
4Sx E 4		790	-12	1

Board (11) Av: NS=-90

Contract	N-S	E-W	IMP	Tie
3S N 3	140		6	6
4S N-1		50	1	5
3S N-1		50	1	12
4Sx N-1		100	0	1
4S N-2		100	0	5
3S N-2		100	0	2
3H W 3		140	-2	3
3H W 4		170	-2	4
3H E 4		170	-2	1
4Sx N-2		300	-5	5
4H W 4		420	-8	1
4Hx W 4		590	-11	1

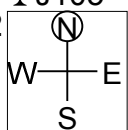
Board (12) Av: NS=-320

Contract	N-S	E-W	IMP	Tie
5S W-2	100		9	2
5S W-1	50		9	5
5S E-1	50		9	2
4S W-1	50		9	2
5D S-2		200	3	2
4S W 4		420	-3	13
4S E 4		420	-3	1
4S W 5		450	-4	9
5Dx S-2		500	-5	9
6Dx N-3		800	-10	1

18th NEC CUP Qualifying Round 1 Tuesday, April 16, 2013

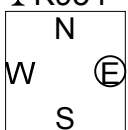
13

♠ QJ73
 ♥ K1075
 ♦ J4
 ♣ J105
 ♠ 98652
 ♥ Q98
 ♦ 1096
 ♣ Q6
 ♠ K104
 ♥ AJ6
 ♦ Q5
 ♣ A9742
 ♠ A
 ♥ 432
 ♦ AK8732
 ♣ K83



14

♠ Q8
 ♥ K86
 ♦ A843
 ♣ K954
 ♠ K10642
 ♥ J43
 ♦ 62
 ♣ A62
 ♠ J53
 ♥ 972
 ♦ KQJ7
 ♣ J107
 ♠ A97
 ♥ AQ105
 ♦ 1095
 ♣ Q83



Board (13) Av: NS=-40

Contract	N-S	E-W	IMP	Tie
3H N 3	140		5	1
2NT N 2	120		4	2
3D S 3	110		4	1
2H N 2	110		4	1
2S W-1	100		4	2
2S E-1	100		4	2
1NT E-1	100		4	1
2D S 2	90		4	3
2D N 2	90		4	1
1NT S 1	90		4	1
1D S 2	90		4	3
1D S 1	70		3	1
1S E 1		80	-1	1
3NT S-1		100	-2	1
3D S-1		100	-2	1
2H S-1		100	-2	1
2H N-1		100	-2	1
2D S-1		100	-2	3
2D N-1		100	-2	2
1D S-1		100	-2	1
2S W 2		110	-2	4
2S E 2		110	-2	2
2S W 3		140	-3	1
4H N-2		200	-4	2
3NT S-2		200	-4	1
3NT N-2		200	-4	3
3H N-2		200	-4	1
2NT N-2		200	-4	1
2C S-2		200	-4	1

Board (14) Av: NS=+160

Contract	N-S	E-W	IMP	Tie
3Sx W-3	500		8	1
3NT N 4	430		7	1
3NT S 3	400		6	8
3NT N 3	400		6	6
2NT N 4	180		1	1
3H S 4	170		0	1
3S W-3	150		0	3
2NT S 3	150		0	3
2NT N 3	150		0	2
1NT N 3	150		0	1
3H S 3	140		-1	1
2NT S 2	120		-1	1
3C S 3	110		-2	2
3NT S-1		50	-5	5
3C S-1		50	-5	1
4C S-2		100	-6	1
3NT S-2		100	-6	5
3NT N-2		100	-6	1
3NT S-3		150	-7	1
5Dx S-3		500	-12	1

36

♠ QJ
♥ AKQ
♦ AJ9632
♣ 96

♠ AK109
♥ 42
♦ 4
♣ KJ8432

♠ 865
♥ 953
♦ KQ1085
♣ A10

♠ 7432
♥ J10876
♦ 7
♣ Q75

Board (36)

N-S	E-W	Contract	L	N-S	E-W	IMP
46	47	2D	N-2 CA	200		
47	46	3H	S-2 D4	200		

37

♠ KJ9753
♥ J92
♦
♣ Q753

♠ A864
♥ AK76
♦ J76
♣ A6

♠ 10
♥ 843
♦ A9542
♣ K1092

♥ Q2
♥ Q105
♦ KQ1083
♣ J84

Board (37)

N-S	E-W	Contract	L	N-S	E-W	IMP
46	47	3Sx	N-2 CT	500		
47	46	3Dx	E 4 SQ	570		

38

♠ A9
♥ K64
♦ J764
♣ 10753

♠ K65
♥ 972
♦ AQ83
♣ AJ2

♠ QJ108
♥ AJ1053
♦ K102
♣ Q

♠ 7432
♥ Q8
♦ 95
♣ K9864

Board (38)

N-S	E-W	Contract	L	N-S	E-W	IMP
46	47	4H	E 5 C6	650		
47	46	4H	E 4 S7	620		

39

♠ KQ95
♥ QJ1075
♦
♣ A653

♠ J
♥ 92
♦ Q874
♣ QJ10842

♠ A832
♥ K643
♦ AK52
♣ 7

♠ 10764
♥ A8
♦ J10963
♣ K9

Board (39)

N-S	E-W	Contract	L	N-S	E-W	IMP
46	47	4S	S 4 CQ	620		
47	46	2S	S 3 CQ	140		

40

♠ A
♥ AK10986
♦ 963
♣ KQ4

♠ J984
♥ Q
♦ J1074
♣ 10953

♠ KQ3
♥ J754
♦ KQ8
♣ J86

♠ 107652
♥ 32
♦ A52
♣ A72

Board (40)

N-S	E-W	Contract	L	N-S	E-W	IMP
46	47	3H	N 4 DK	170		
47	46	4H	N 4 DK	420		

41

♠ AJ102
♥ 63
♦ A3
♣ 106543

♠ 5
♥ J10975
♦ Q94
♣ A972

♠ KQ97
♥ AQ84
♦ 75
♣ KQJ

♠ 8643
♥ K2
♦ KJ10862
♣ 8

Board (41)

N-S	E-W	Contract	L	N-S	E-W	IMP
46	47	4H	E-2 C8	200		
47	46	4H	W-1 H3	100		

42

♠ 6
♥ J1065
♦ Q986
♣ 7532

♠ J85
♥ AK3
♦ AJ743
♣ 64

♠ Q10974
♥ 74
♦ 105
♣ KQJ10

♠ AK32
♥ Q982
♦ K2
♣ A98

Board (42)

N-S	E-W	Contract	L	N-S	E-W	IMP
46	47	1NT	S-1 S5	100		
47	46	1NT	S 1 D4	90		