

1

♠ Q3  
♥ 643  
♦ AQ942  
♣ 932

♠ A10542  
♥ J7  
♦ K10  
♣ 10654

♠ J876  
♥ KQ10  
♦ 875  
♣ KJ8

♠ K9  
♥ A9852  
♦ J63  
♣ AQ7

Diagram: A square with N, S, E, W. N has a circle with N inside. W has a circle with W inside. E has a circle with E inside. S has a circle with S inside.

2

♠ Q1082  
♥ A106  
♦ Q  
♣ KQ1087

♠ AK974  
♥ 84  
♦ K94  
♣ 643

♠ 65  
♥ J92  
♦ A108762  
♣ J2

♠ J3  
♥ KQ753  
♦ J53  
♣ A95

Diagram: A square with N, S, E, W. N has a circle with N inside. S has a circle with S inside. E has a circle with E inside. W has a circle with W inside.

3

♠ AQ102  
♥ 72  
♦ AQ85  
♣ 1062

♠ 765  
♥ K9863  
♦ KJ72  
♣ 5

♠ K8  
♥ J4  
♦ 964  
♣ AQJ973

♠ J943  
♥ AQ105  
♦ 103  
♣ K84

Diagram: A square with N, S, E, W. N has a circle with N inside. S has a circle with S inside. E has a circle with E inside. W has a circle with W inside.

4

♠ AK976  
♥ A3  
♦ 1072  
♣ 763

♠ J2  
♥ Q1082  
♦ KQ6  
♣ AJ105

♠ 54  
♥ J765  
♦ A983  
♣ K94

♠ Q1083  
♥ K94  
♦ J54  
♣ Q82

Diagram: A square with N, S, E, W. N has a circle with N inside. S has a circle with S inside. E has a circle with E inside. W has a circle with W inside.

Board (1) Av: NS=+100

Contract	N-S	E-W	IMP	Tie
3Hx S 4	630		11	1
4H S 4	420		8	2
2H S 4	170		2	3
4S E-3	150		2	1
3H S 3	140		1	1
2H S 3	140		1	3
2H N 3	140		1	1
4D N 4	130		1	1
3D N 4	130		1	2
1NT S 2	120		1	2
3S W-2	100		0	11
3S E-2	100		0	1
1NT S 1	90		0	2
1NT N 1	90		0	1
3S W-1	50		-2	3
2S W-1	50		-2	6
2S E-1	50		-2	1
3NT S-1		50	-4	1
4H S-2		100	-5	1
2S W 2		110	-5	2

Board (2) Av: NS=+310

Contract	N-S	E-W	IMP	Tie
4Sx W-4	800		10	1
3NT N 5	660		8	2
4H S 5	650		8	3
4H N 5	650		8	1
4H S 4	620		7	9
5Dx E-3	500		5	1
4S W-5	250		-2	1
4S W-4	200		-3	3
3S W-4	200		-3	1
3H S 5	200		-3	2
1NT W-4	200		-3	1
1NT E-4	200		-3	1
2H S 4	170		-4	1
5D E-3	150		-4	1
3C N 5	150		-4	1
2S W-3	150		-4	1
1NT E-3	150		-4	5
3C N 4	130		-5	1
2S W-2	100		-5	3
1NT E-2	100		-5	1
3D E-1	50		-6	2
4H S-1		100	-9	3
5Hx S-1		200	-11	1

Board (3) Av: NS=+50

Contract	N-S	E-W	IMP	Tie
2Hx E-1	200		4	1
3S N 3	140		3	17
2S N 3	140		3	1
2S N 2	110		2	4
1NT N 1	90		1	2
4S N-1		50	-3	1
3S N-1		50	-3	14
2S N-1		50	-3	2
2NT N-1		50	-3	1
2H S-1		50	-3	1
4S S-2		100	-4	1
4S N-2		100	-4	1

Board (4) Av: NS=-50

Contract	N-S	E-W	IMP	Tie
4H W-2	200		6	4
4H E-2	200		6	1
4H W-1	100		4	7
3H W-1	100		4	1
3C W-1	100		4	1
1NT W-1	100		4	3
2S N-1		100	-2	6
3H W 3		140	-3	12
3H E 3		140	-3	2
3S N-2		200	-4	9

**5**

♠72  
♥8  
♦87432  
♣K8752

♠KQ94  
♥A109753  
♦1095  
♣

♠63  
♥KJ  
♦AKQ6  
♣J10943

♠AJ1085  
♥Q642  
♦J  
♣AQ6

Board (5) Av: NS=-360

Contract	N-S	E-W	IMP	Tie
3NT E-2	100		10	1
5H W-1	50		9	1
1NT S-1		100	6	1
3D W 3		110	6	2
2H E 4		170	5	1
3H W 5		200	4	1
2Sx S-1		200	4	1
2H W 5		200	4	4
2H E 5		200	4	1
2S S-3		300	2	1
2S S-4		400	-1	1
4H W 4		420	-2	6
4H E 4		420	-2	5
3NT W 4		430	-2	1
3NT E 4		430	-2	1
4H W 5		450	-3	11
4H E 5		450	-3	3
3NT W 5		460	-3	1
2Cx N-2		500	-4	2
2SxxN-3		1600	-15	1

**6**

♠KQ1082  
♥J1032  
♦Q763  
♣

♠AJ5  
♥K986  
♦AK8  
♣543

♠73  
♥74  
♦1052  
♣AJ10876

♠964  
♥AQ5  
♦J94  
♣KQ92

Board (6) Av: NS=+110

Contract	N-S	E-W	IMP	Tie
2Hx W-3	800		12	1
2NT W-2	200		3	1
1NT S 3	150		1	1
2S S 3	140		1	3
2S N 3	140		1	15
1NT S 2	120		0	3
1NT N 2	120		0	1
2S S 2	110		0	2
2S N 2	110		0	9
2H N 2	110		0	1
3C E-1	100		0	2
2C E-1	100		0	1
1NT S 1	90		-1	1
4S S-1		50	-4	1
2C E 2		90	-5	1
3D S-2		100	-5	1
3H S-3		150	-6	1
2C S-3		150	-6	1

**7**

♠QJ64  
♥KQ  
♦643  
♣9862

♠9852  
♥108  
♦J102  
♣AQ53

♠K  
♥AJ9752  
♦Q8  
♣KJ104

♠A1073  
♥643  
♦AK975  
♣7

Board (7) Av: NS=+130

Contract	N-S	E-W	IMP	Tie
4S N 4	620		10	2
3D W-4	400		7	1
4H E-2	200		2	1
4C E-2	200		2	4
3S N 4	170		1	7
2S N 4	170		1	2
2S S 3	140		0	5
2S N 3	140		0	6
2S N 2	110		-1	6
3C W-1	100		-1	2
3C E-1	100		-1	1
3S S-1		100	-6	1
3H E 3		140	-7	1
2H E 3		140	-7	2
2H E 4		170	-7	1
3S N-3		300	-10	1

**8**

♠AQ76  
♥Q87  
♦AQJ2  
♣AQ

♠K1043  
♥J5  
♦875  
♣8765

♠852  
♥1063  
♦K1096  
♣KJ10

♠J9  
♥AK942  
♦43  
♣9432

Board (8) Av: NS=+410

Contract	N-S	E-W	IMP	Tie
3NT N 6	490		2	1
4H N 6	480		2	7
3NT N 5	460		2	2
5H N 5	450		1	1
4H S 5	450		1	1
4H N 5	450		1	15
4H S 4	420		0	1
4H N 4	420		0	14
6H N-1		50	-10	1
6NT N-2		100	-11	1
6H S-2		100	-11	1
6H N-2		100	-11	1

**9**

♠ 32  
♥ AKJ6  
♦ A72  
♣ AQ54

♠ A865  
♥ 8732  
♦ 9843  
♣ 6

♠ J94  
♥ 104  
♦ J65  
♣ KJ983

♠ KQ107  
♥ Q95  
♦ KQ10  
♣ 1072

W — E  
N — S

Board (9) Av: NS=+410

Contract	N-S	E-W	IMP	Tie
4NT N 5	460		2	1
3NT S 5	460		2	1
3NT N 5	460		2	15
4NT N 4	430		1	1
3NT S 4	430		1	4
3NT N 4	430		1	18
3NT N 3	400		0	2
5NT S-1		50	-10	1
4S N-1		50	-10	1
6NT N-2		100	-11	2

**10**

♠ A97  
♥ Q86  
♦ J64  
♣ AJ43

♠ 10653  
♥ 4  
♦ KQ932  
♣ KQ8

♠ QJ42  
♥ A52  
♦ 108  
♣ 9765

♠ K8  
♥ KJ10973  
♦ A75  
♣ 102

W — E  
N — S

Board (10) Av: NS=+190

Contract	N-S	E-W	IMP	Tie
4H S 5	650		10	2
3NT S 4	630		10	1
3NT N 4	630		10	1
4H S 4	620		10	11
3NT S 3	600		9	1
3NT N 3	600		9	2
3H S 3	140		-2	3
4H S-1		100	-7	23
4H N-1		100	-7	2

**11**

♠ AQ86  
♥ J7  
♦ J98  
♣ Q1082

♠ J10  
♥ 10643  
♦ Q10642  
♣ J5

♠ K7  
♥ A852  
♦ A3  
♣ K9763

♠ 95432  
♥ KQ9  
♦ K75  
♣ A4

W — E  
N — S

Board (11) Av: NS=+160

Contract	N-S	E-W	IMP	Tie
4Dx W-3	500		8	1
4S S 4	420		6	2
4S N 4	420		6	2
1NTxS 3	380		6	1
1NTxN 2	280		3	1
3S S 4	170		0	7
2S S 4	170		0	1
2S N 4	170		0	1
3S S 3	140		-1	20
3S N 3	140		-1	1
2S S 3	140		-1	3
2S S 2	110		-2	1
3H W-1	50		-3	1
3S S-1		50	-5	1
4S S-2		100	-6	1
3S S-2		100	-6	2

**12**

♠ A108752  
♥  
♦ QJ1074  
♣ 98

♠ Q9  
♥ AKQJ1087  
♦ 63  
♣ J4

♠ KJ6  
♥ 6543  
♦ A985  
♣ 107

♠ 43  
♥ 92  
♦ K2  
♣ AKQ6532

W — E  
N — S

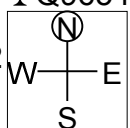
Board (12) Av: NS=+250

Contract	N-S	E-W	IMP	Tie
6C S 6	1370		15	1
5Cx S 6	950		12	1
5Cx N 6	950		12	1
4Sx N 4	790		11	2
5Cx S 5	750		11	1
5C S 6	620		9	1
4S N 4	620		9	8
5C S 5	600		8	2
6Hx W-3	500		6	1
5Hx W-2	300		2	3
5Hx E-2	300		2	1
3NT E-4	200		-2	1
5Hx W-1	100		-4	4
5H W-2	100		-4	2
4H W-1	50		-5	5
6C N-1		100	-8	1
5S N-1		100	-8	1
6Cx S-1		200	-10	1
6Cx N-1		200	-10	1
5Sx S-1		200	-10	1
5Sx N-1		200	-10	1
5D N-3		300	-11	1
4H W 4		420	-12	5

18th NEC CUP Qualifying Round 3 Tuesday, April 16, 2013

13

♠ J10  
 ♥ Q  
 ♦ J10965  
 ♣ Q9654  
 ♠ AK754  
 ♥ AJ5  
 ♦ 74  
 ♣ A102  
 ♠ Q9632  
 ♥ 1087  
 ♦ Q  
 ♣ K873

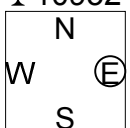


Board (13) Av: NS=-610

Contract	N-S	E-W	IMP	Tie
7H W-1	100		12	1
7H E-1	100		12	1
6H W-1	100		12	5
6H E-1	100		12	6
4H E 4		620	0	1
4H W 5		650	-1	4
4H E 5		650	-1	3
3NT W 5		660	-2	1
4H W 6		680	-2	11
4H E 6		680	-2	3
6H W 6		1430	-13	5
6H E 6		1430	-13	5

14

♠ Q983  
 ♥ 752  
 ♦ J4  
 ♣ 10932  
 ♠ 72  
 ♥ AKQJ943  
 ♦ K83  
 ♣ 4  
 ♠ K106  
 ♥ 108  
 ♦ AQ107  
 ♣ Q765



Board (14) Av: NS=-430

Contract	N-S	E-W	IMP	Tie
6H W-2	100		11	2
6H W-1	50		10	2
4H W 4		420	0	1
3NT E 4		430	0	2
4H W 5		450	-1	23
4H E 5		450	-1	4
3NT W 5		460	-1	1
4H W 6		480	-2	6
4H E 6		480	-2	2
3NT E 6		490	-2	1
6H W 6		980	-11	1
6NT E 6		990	-11	1

36

♠ K6532  
♥ KJ42  
♦ Q3  
♣ J3

♠ 109  
♥ A3  
♦ AKJ10865  
♣ Q6

N		♠ AJ7
W	—	♥ 1098765
E		♦ 7
S		♣ 952

♠ Q84  
♥ Q  
♦ 942  
♣ AK10874

Board (36)

N-S	E-W	Contract	L	N-S	E-W	IMP
41	43	3S	N-2 D7		200	
43	41	4H	E-2 CA		200	

37

♠ KJ8764  
♥ 6  
♦ K96  
♣ Q92

♠ 1095  
♥ 98532  
♦ 1084  
♣ K10

N		♠ Q
W	—	♥ AKJ107
E		♦ J7532
S		♣ J7

♠ A32  
♥ Q4  
♦ AQ  
♣ A86543

Board (37)

N-S	E-W	Contract	L	N-S	E-W	IMP
41	43	4S	N 5 HA		650	
43	41	5S	N 5 HA		650	

38

♠ J9643  
♥ Q65  
♦ A6532

♠ K87  
♥ A9432  
♦ J9  
♣ 1097

N		♠ AQ1052
W	—	♥ 108
E		♦ Q
S		♣ K8432

♠ KJ7  
♥ K10874  
♣ AQJ65

Board (38)

N-S	E-W	Contract	L	N-S	E-W	IMP
41	43	5D	S 5 S7		400	
43	41	5D	S 5 S7		400	

39

♠ K10865  
♥ Q  
♦ KQJ73  
♣ 64

♠ A92  
♥ KJ64  
♦ 862  
♣ A82

N		♠ Q3
W	—	♥ 98752
E		♦ A10
S		♣ KJ73

♠ J74  
♥ A103  
♦ 954  
♣ Q1095

Board (39)

N-S	E-W	Contract	L	N-S	E-W	IMP
41	43	3S	N-1 H9		100	
43	41	4H	W-2 DK		200	

40

♠ AKJ752  
♥ 32  
♦ AK5  
♣ 75

♠ 4  
♥ K97  
♦ 10982  
♣ QJ932

N		♠ 863
W	—	♥ J84
E		♦ QJ63
S		♣ K64

♠ Q109  
♥ AQ1065  
♦ 74  
♣ A108

Board (40)

N-S	E-W	Contract	L	N-S	E-W	IMP
41	43	6S	N 6 DQ		980	
43	41	4S	N 6 S3		480	

41

♠ AJ108  
♥ 962  
♦ 10532  
♣ 84

♠ 72  
♥ J1043  
♦ 98  
♣ AQJ95

N		♠ K943
W	—	♥ A8
E		♦ AKJ7
S		♣ K72

♠ Q65  
♥ KQ75  
♦ Q64  
♣ 1063

Board (41)

N-S	E-W	Contract	L	N-S	E-W	IMP
41	43	3NT	E 4 H3		630	
43	41	3NT	E 3 C3		600	

42

♠ QJ109853  
♥ 10  
♦ AK2  
♣ 32

♠ 76  
♥ AQ93  
♦ Q73  
♣ KQ106

N		♠ A4
W	—	♥ K876
E		♦ J96
S		♣ J854

♠ K2  
♥ J542  
♦ 10854  
♣ A97

Board (42)

N-S	E-W	Contract	L	N-S	E-W	IMP
41	43	4S	N-1 H5		100	
43	41	4S	N 4 H7		620	