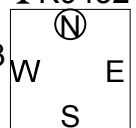


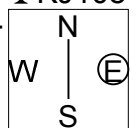
17

♠ A2
 ♥ J86
 ♦ KQ8
 ♣ K9432
 ♠ J95
 ♥ AK943
 ♦ 74
 ♣ 876
 ♠ 1043
 ♥ 105
 ♦ AJ52
 ♣ QJ105
 ♠ KQ876
 ♥ Q72
 ♦ 10963
 ♣ A



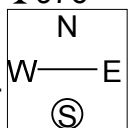
18

♠ J10
 ♥ 952
 ♦ 8653
 ♣ KJ108
 ♠ KQ874
 ♥ AQ64
 ♦ 9
 ♣ Q97
 ♠ 96
 ♥ KJ87
 ♦ J1072
 ♣ 643
 ♠ A532
 ♥ 103
 ♦ AKQ4
 ♣ A52



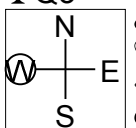
19

♠ K10986
 ♥ KJ4
 ♦ 65
 ♣ 976
 ♠ AJ4
 ♥ A875
 ♦ KJ10984
 ♣
 ♠ 72
 ♥ Q1062
 ♦ AQ
 ♣ KQ1032
 ♠ Q53
 ♥ 93
 ♦ 732
 ♣ AJ854



20

♠ A107
 ♥ 102
 ♦ AKQ763
 ♣ Q3
 ♠ K9632
 ♥ KJ863
 ♦ 4
 ♣ 74
 ♠ J84
 ♥ 95
 ♦ 982
 ♣ 98652
 ♠ Q5
 ♥ AQ74
 ♦ J105
 ♣ AKJ10



Board (17) Av: NS=+110

| Contract | N-S | E-W | IMP | Tie |
|----------|-----|-----|-----|-----|
| 3NT N 4 | 430 | | 8 | 3 |
| 3NT N 3 | 400 | | 7 | 2 |
| 3H W-5 | 250 | | 4 | 1 |
| 2NT N 4 | 180 | | 2 | 1 |
| 2S S 4 | 170 | | 2 | 1 |
| 2NT N 3 | 150 | | 1 | 5 |
| 1NT N 3 | 150 | | 1 | 1 |
| 3S N 3 | 140 | | 1 | 1 |
| 2S S 3 | 140 | | 1 | 1 |
| 2S N 3 | 140 | | 1 | 1 |
| 2NT N 2 | 120 | | 0 | 4 |
| 1NT N 2 | 120 | | 0 | 1 |
| 2S S 2 | 110 | | 0 | 10 |
| 2H W-2 | 100 | | 0 | 1 |
| 2D S 2 | 90 | | -1 | 1 |
| 3S S-1 | | 50 | -4 | 1 |
| 3NT N-1 | | 50 | -4 | 6 |
| 2NT N-1 | | 50 | -4 | 2 |
| 4S S-2 | | 100 | -5 | 1 |
| 3NT N-2 | | 100 | -5 | 1 |
| 2NT N-2 | | 100 | -5 | 1 |

Board (18) Av: NS=-20

| Contract | N-S | E-W | IMP | Tie |
|----------|-----|-----|-----|-----|
| 1NT S 3 | 150 | | 5 | 1 |
| 1NT N 3 | 150 | | 5 | 1 |
| 3D S 4 | 130 | | 4 | 1 |
| 2NT N 2 | 120 | | 4 | 1 |
| 1NT S 2 | 120 | | 4 | 3 |
| 3D S 3 | 110 | | 4 | 3 |
| 2S W-2 | 100 | | 3 | 3 |
| 2H W-2 | 100 | | 3 | 1 |
| 3H W-1 | 50 | | 2 | 2 |
| 3H E-1 | 50 | | 2 | 3 |
| 2S W-1 | 50 | | 2 | 1 |
| 1S W 1 | | 80 | -2 | 1 |
| 1S E 1 | | 80 | -2 | 1 |
| 3D S-1 | | 100 | -2 | 1 |
| 3C S-1 | | 100 | -2 | 1 |
| 3C N-1 | | 100 | -2 | 2 |
| 2S W 2 | | 110 | -3 | 2 |
| 2S E 2 | | 110 | -3 | 1 |
| 2H W 2 | | 110 | -3 | 2 |
| 2H E 2 | | 110 | -3 | 10 |
| 3H E 3 | | 140 | -3 | 1 |
| 2H E 3 | | 140 | -3 | 3 |
| 3D S-3 | | 300 | -7 | 1 |

Board (19) Av: NS=-610

| Contract | N-S | E-W | IMP | Tie |
|----------|-----|------|-----|-----|
| 7D W-2 | 200 | | 13 | 1 |
| 6D E-1 | 100 | | 12 | 1 |
| 5H W-1 | 100 | | 12 | 1 |
| 5D W-1 | 100 | | 12 | 1 |
| 4Sx N-3 | | 500 | 3 | 1 |
| 5D W 5 | | 600 | 0 | 1 |
| 4H W 4 | | 620 | 0 | 1 |
| 5H W 5 | | 650 | -1 | 2 |
| 5H E 5 | | 650 | -1 | 1 |
| 4H W 5 | | 650 | -1 | 6 |
| 4H E 5 | | 650 | -1 | 14 |
| 5H W 6 | | 680 | -2 | 2 |
| 5H E 6 | | 680 | -2 | 1 |
| 4H W 6 | | 680 | -2 | 3 |
| 4H E 6 | | 680 | -2 | 8 |
| 4Sx N-4 | | 800 | -5 | 1 |
| 6H E 6 | | 1430 | -13 | 1 |

Board (20) Av: NS=+1280

| Contract | N-S | E-W | IMP | Tie |
|----------|------|-----|-----|-----|
| 7D N 7 | 2140 | | 13 | 1 |
| 6NT S 7 | 1470 | | 5 | 1 |
| 6NT N 7 | 1470 | | 5 | 5 |
| 6NT S 6 | 1440 | | 4 | 1 |
| 6NT N 6 | 1440 | | 4 | 9 |
| 6D N 7 | 1390 | | 3 | 8 |
| 6D S 6 | 1370 | | 3 | 1 |
| 6D N 6 | 1370 | | 3 | 12 |
| 3NT N 7 | 720 | | -11 | 2 |
| 3NT N 6 | 690 | | -11 | 1 |
| 5D N 7 | 640 | | -12 | 1 |
| 5D N 6 | 620 | | -12 | 2 |
| 4D N 6 | 170 | | -15 | 2 |

21

♠ AQ3
 ♥ K982
 ♦ KQ98
 ♣ 109
 ♠ 754
 ♥ 7643
 ♦ A1043
 ♣ J6
 ♠ J
 ♥ J
 ♦ 765
 ♣ AKQ85432
 ♠ K109862
 ♥ AQ105
 ♦ J2
 ♣ 7

Board (21) Av: NS=+480

| Contract | N-S | E-W | IMP | Tie |
|----------|-----|------|-----|-----|
| 6S | N 6 | 1430 | 14 | 1 |
| 5Sx | S 5 | 850 | 9 | 1 |
| 7Cx | E-4 | 800 | 8 | 1 |
| 4H | N 6 | 680 | 5 | 1 |
| 5S | S 5 | 650 | 5 | 10 |
| 5H | S 5 | 650 | 5 | 1 |
| 5H | N 5 | 650 | 5 | 4 |
| 4S | S 5 | 650 | 5 | 2 |
| 4H | N 5 | 650 | 5 | 4 |
| 6Cx | E-3 | 500 | 1 | 2 |
| 5Cx | E-3 | 500 | 1 | 1 |
| 5Cx | E-2 | 300 | -5 | 13 |
| 5Cx | E-1 | 100 | -9 | 1 |
| 6S | S-1 | 100 | -11 | 3 |
| 5D | N-2 | 200 | -12 | 1 |

22

♠ K1065
 ♥ 962
 ♦ 9
 ♣ 108642
 ♠ AQ3
 ♥ 53
 ♦ AKQ1053
 ♣ AQ
 ♠ J74
 ♥ K107
 ♦ J8764
 ♣ 75
 ♠ 982
 ♥ AQJ84
 ♦ 2
 ♣ KJ93

Board (22) Av: NS=-450

| Contract | N-S | E-W | IMP | Tie |
|----------|-----|-----|-----|-----|
| 5D | W-1 | 100 | 11 | 7 |
| 5D | E-1 | 100 | 11 | 1 |
| 4Hx | S-1 | 100 | 8 | 1 |
| 3Hx | N-1 | 100 | 8 | 1 |
| 3D | W 4 | 130 | 8 | 1 |
| 3D | E 5 | 150 | 7 | 1 |
| 4Hx | S-2 | 300 | 4 | 1 |
| 5D | E 5 | 600 | -4 | 6 |
| 3NT | W 3 | 600 | -4 | 1 |
| 3NT | E 3 | 600 | -4 | 11 |
| 3NT | W 4 | 630 | -5 | 2 |
| 3NT | E 4 | 630 | -5 | 12 |
| 3NT | W 5 | 660 | -5 | 1 |

23

♠ 952
 ♥ 106
 ♦ J102
 ♣ KJ983
 ♠ AJ10843
 ♥ J9
 ♦ KQ74
 ♣ A
 ♠ Q
 ♥ AQ87532
 ♦ 853
 ♣ 64
 ♠ K76
 ♥ K4
 ♦ A96
 ♣ Q10752

Board (23) Av: NS=-540

| Contract | N-S | E-W | IMP | Tie |
|----------|-----|-----|-----|-----|
| 3D | W-1 | 100 | 12 | 1 |
| 3D | W 3 | 110 | 10 | 1 |
| 3D | W 4 | 130 | 9 | 1 |
| 2S | W 3 | 140 | 9 | 1 |
| 3S | W 4 | 170 | 9 | 3 |
| 3H | E 4 | 170 | 9 | 1 |
| 2S | W 4 | 170 | 9 | 1 |
| 3S | W 5 | 200 | 8 | 1 |
| 3H | E 5 | 200 | 8 | 1 |
| 4S | W 4 | 620 | -2 | 5 |
| 4H | E 4 | 620 | -2 | 2 |
| 4H | E 5 | 650 | -3 | 26 |
| 4H | E 6 | 680 | -4 | 1 |
| 4Hx | E 5 | 990 | -10 | 1 |

24

♠ QJ8
 ♥ K9652
 ♦ A64
 ♣ 74
 ♠ K10652
 ♥
 ♦ 875
 ♣ AKJ53
 ♠ A4
 ♥ A843
 ♦ Q932
 ♣ Q109
 ♠ 973
 ♥ QJ107
 ♦ KJ10
 ♣ 862

Board (24) Av: NS=-200

| Contract | N-S | E-W | IMP | Tie |
|----------|-----|-----|-----|-----|
| 3NT | E-5 | 250 | 10 | 1 |
| 6C | E-2 | 100 | 7 | 1 |
| 5D | E-2 | 100 | 7 | 1 |
| 6C | E-1 | 50 | 6 | 1 |
| 3NT | W-1 | 50 | 6 | 1 |
| 3NT | E-1 | 50 | 6 | 14 |
| 2NT | E 2 | 120 | 2 | 1 |
| 3C | E 5 | 150 | 2 | 1 |
| 3S | W 4 | 170 | 1 | 1 |
| 2S | W 4 | 170 | 1 | 1 |
| 5C | W 5 | 400 | -5 | 2 |
| 5C | E 5 | 400 | -5 | 1 |
| 3NT | E 3 | 400 | -5 | 7 |
| 4S | W 4 | 420 | -6 | 8 |
| 4S | E 4 | 420 | -6 | 1 |
| 3NT | E 4 | 430 | -6 | 2 |
| 3NT | E 5 | 460 | -6 | 1 |
| 3Hx | N-3 | 500 | -7 | 1 |

25

♠ 8752
♥ 109
♦ J73
♣ 9852

♠ AJ63
♥ 75
♦ K1052
♣ KQ7

♠ KQ9
♥ K843
♦ AQ86
♣ 64

♠ 104
♥ AQJ62
♦ 94
♣ AJ103

(N)
W — E
S

26

♠ 742
♥ K9
♦ Q983
♣ 10852

♠ 98
♥ J62
♦ 7642
♣ AKJ4

♠ J103
♥ A10743
♦ KJ
♣ 973

♠ AKQ65
♥ Q85
♦ A105
♣ Q6

(N)
W — E
S

27

♠ QJ7
♥ J75
♦ Q1042
♣ 1062

♠ K954
♥ A1093
♦ J5
♣ A84

♠ A6
♥ KQ864
♦ 86
♣ 9753

♠ 10832
♥ 2
♦ AK973
♣ KQJ

(N)
W — E
S

28

♠ AKJ9
♥ Q875
♦ 854
♣ 74

♠ 3
♥ A42
♦ K1093
♣ AK1052

♠ Q107652
♥ J93
♦ Q2
♣ J6

♠ 84
♥ K106
♦ AJ76
♣ Q983

(N)
W — E
S

Board (25) Av: NS=-600

| Contract | N-S | E-W | IMP | Tie |
|----------|-----|-----|-----|-----|
| 4S W-1 | 100 | | 12 | 1 |
| 3S W 3 | | 140 | 10 | 1 |
| 2Hx N-2 | | 300 | 7 | 1 |
| 3NT E 3 | | 600 | 0 | 12 |
| 4S E 4 | | 620 | -1 | 1 |
| 3NT W 4 | | 630 | -1 | 1 |
| 3NT E 4 | | 630 | -1 | 26 |
| 3NT E 5 | | 660 | -2 | 3 |

Board (26) Av: NS=+110

| Contract | N-S | E-W | IMP | Tie |
|----------|-----|-----|-----|-----|
| 3NT S 4 | 630 | | 11 | 1 |
| 1NT S 4 | 180 | | 2 | 1 |
| 3S S 4 | 170 | | 2 | 1 |
| 3S S 3 | 140 | | 1 | 19 |
| 3S N 3 | 140 | | 1 | 1 |
| 2S S 3 | 140 | | 1 | 5 |
| 1S S 3 | 140 | | 1 | 3 |
| 2NT N 2 | 120 | | 0 | 1 |
| 1NT S 2 | 120 | | 0 | 2 |
| 1NT N 2 | 120 | | 0 | 1 |
| 1NT S 1 | 90 | | -1 | 4 |
| 1NT N 1 | 90 | | -1 | 1 |
| 1S S 1 | 80 | | -1 | 1 |
| 4S S-1 | | 100 | -5 | 3 |
| 3S S-1 | | 100 | -5 | 1 |
| 3NT S-1 | | 100 | -5 | 1 |

Board (27) Av: NS=-60

| Contract | N-S | E-W | IMP | Tie |
|----------|-----|-----|-----|-----|
| 4H W-1 | 50 | | 3 | 1 |
| 4H E-1 | 50 | | 3 | 16 |
| 4D S-1 | | 50 | 0 | 2 |
| 3D S-1 | | 50 | 0 | 1 |
| 2S N-1 | | 50 | 0 | 1 |
| 4D S-2 | | 100 | -1 | 1 |
| 4D N-2 | | 100 | -1 | 1 |
| 3H W 3 | | 140 | -2 | 1 |
| 3H E 3 | | 140 | -2 | 10 |
| 2H E 3 | | 140 | -2 | 12 |

Board (28) Av: NS=+10

| Contract | N-S | E-W | IMP | Tie |
|----------|-----|-----|-----|-----|
| 2S E-2 | 100 | | 3 | 13 |
| 3C W-1 | 50 | | 1 | 1 |
| 2S W-1 | 50 | | 1 | 2 |
| 2S E-1 | 50 | | 1 | 11 |
| 2C W-1 | 50 | | 1 | 5 |
| 1NT W-1 | 50 | | 1 | 1 |
| 2D W 2 | | 90 | -3 | 1 |
| 2C W 2 | | 90 | -3 | 3 |
| 2S E 2 | | 110 | -3 | 3 |
| 2C W 3 | | 110 | -3 | 1 |
| 2S E 3 | | 140 | -4 | 1 |
| 3H N-2 | | 200 | -5 | 1 |
| 1NT S-2 | | 200 | -5 | 1 |
| 2Sx W 2 | | 470 | -10 | 1 |
| 2Sx E 2 | | 470 | -10 | 1 |

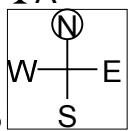
18th NEC CUP Qualifying Round 4 Tuesday, April 16, 2013

29

♠ J86543
♥ 32
♦ 7532
♣ A

♠ 1097 ♠ KQ
♥ Q ♥ AJ1065
♦ A1096 ♦
♣ QJ983 ♣ K107652

♠ A2
♥ K9874
♦ KQJ84
♣ 4

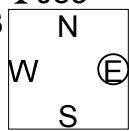


30

♠ K10742
♥ Q10865
♣ J83

♠ 97653 ♠ KQJ82
♥ A53 ♥ 6
♦ K3 ♦ 742
♣ 942 ♣ K1076

♠ A104
♥ QJ98
♦ AJ9
♣ AQ5



Board (29) Av: NS=-430

| Contract | N-S | E-W | IMP | Tie |
|----------|-----|-----|-----|-----|
| 6Cx E-1 | 200 | | 12 | 1 |
| 3H E-2 | 200 | | 12 | 2 |
| 2Dx S 2 | 180 | | 12 | 1 |
| 3D S 3 | 110 | | 11 | 2 |
| 6C E-1 | 100 | | 11 | 2 |
| 3S N-1 | | 100 | 8 | 1 |
| 3D S-1 | | 100 | 8 | 2 |
| 4C E 5 | | 150 | 7 | 1 |
| 3D S-2 | | 200 | 6 | 1 |
| 2Dx S-1 | | 200 | 6 | 1 |
| 5Dx S-2 | | 500 | -2 | 2 |
| 5Dx N-2 | | 500 | -2 | 1 |
| 5C W 5 | | 600 | -5 | 1 |
| 5C E 5 | | 600 | -5 | 23 |
| 5Cx W 5 | | 750 | -8 | 1 |
| 5Cx E 5 | | 750 | -8 | 1 |
| 5Dx S-3 | | 800 | -9 | 3 |

Board (30) Av: NS=+320

| Contract | N-S | E-W | IMP | Tie |
|----------|-----|-----|-----|-----|
| 4H S 6 | 480 | | 4 | 1 |
| 5H S 5 | 450 | | 4 | 3 |
| 5H N 5 | 450 | | 4 | 13 |
| 4H S 5 | 450 | | 4 | 2 |
| 4H N 5 | 450 | | 4 | 11 |
| 5D N 5 | 400 | | 2 | 1 |
| 5Sx E-2 | 300 | | -1 | 1 |
| 4Sx E-1 | 100 | | -6 | 6 |
| 6H N-1 | | 50 | -9 | 3 |
| 5H N-1 | | 50 | -9 | 2 |
| 6D N-2 | | 100 | -9 | 1 |
| 3NT S-2 | | 100 | -9 | 1 |
| 5C S-3 | | 150 | -10 | 1 |

18th NEC CUP Qualifying Round 4 Tuesday, April 16, 2013

38

♠AQ
♥Q62
♦98532
♣J76

♠8
♥AK87
♦AQJ6
♣KQ52

| | | |
|---|---|---------|
| N | | ♠J76543 |
| W | — | ♥95 |
| E | — | ♦1074 |
| S | | ♣109 |

♠K1092
♥J1043
♦K
♣A843

Board (38)

| N-S | E-W | Contract | L | N-S | E-W | IMP |
|-----|-----|----------|--------|-----|-----|-----|
| 29 | 33 | 3S | E-1 CA | 100 | | |
| 33 | 29 | 1NT | N-2 DT | 100 | | |

39

♠Q852
♥Q74
♦Q6
♣J873

♠AKJ6
♥10986
♦K
♣AK105

| | | |
|---|---|--------|
| N | | ♠1043 |
| W | — | ♥AKJ |
| E | — | ♦A1075 |
| S | | ♣962 |

♥97
♥532
♦J98432
♣Q4

Board (39)

| N-S | E-W | Contract | L | N-S | E-W | IMP |
|-----|-----|----------|--------|-----|-----|-----|
| 29 | 33 | 3NT | W 6 S2 | 690 | | |
| 33 | 29 | 6NT | E-1 D4 | 100 | | |

40

♠J965
♥K73
♦A72
♣K104

♠KQ10
♥6
♦K865
♣J9875

| | | |
|---|---|---------|
| N | | ♠84 |
| W | — | ♥Q1098 |
| E | — | ♦Q10943 |
| S | | ♣AQ |

♠A732
♥AJ542
♦J
♣632

Board (40)

| N-S | E-W | Contract | L | N-S | E-W | IMP |
|-----|-----|----------|--------|-----|-----|-----|
| 29 | 33 | 4Dx | E-1 HA | 100 | | |
| 33 | 29 | 3H | S-1 SK | 50 | | |

41

♠A1053
♥Q7643
♦Q
♣KQ4

♠4
♥AK
♦K98
♣AJ87652

| | | |
|---|---|--------|
| N | | ♠KJ87 |
| W | — | ♥10952 |
| E | — | ♦A1074 |
| S | | ♣9 |

♠Q962
♥J8
♦J6532
♣103

Board (41)

| N-S | E-W | Contract | L | N-S | E-W | IMP |
|-----|-----|----------|--------|-----|-----|-----|
| 29 | 33 | 3NT | W-2 S4 | 200 | | |
| 33 | 29 | 3C | W 4 H4 | 130 | | |

42

♠102
♥10863
♦10654
♣1073

♠AQ85
♥KQ
♦QJ987
♣98

| | | |
|---|---|--------|
| N | | ♠KJ943 |
| W | — | ♥72 |
| E | — | ♦K2 |
| S | | ♣AK64 |

♠76
♥AJ954
♦A3
♣QJ52

Board (42)

| N-S | E-W | Contract | L | N-S | E-W | IMP |
|-----|-----|----------|--------|-----|-----|-----|
| 29 | 33 | 5S | E 5 HA | 650 | | |
| 33 | 29 | 4S | E 6 DA | 680 | | |

43

♠AJ7
♥AK8
♦QJ10742
♣A

♠Q3
♥6543
♦963
♣QJ42

| | | |
|---|---|--------|
| N | | ♠K842 |
| W | — | ♥Q10 |
| E | — | ♦AK8 |
| S | | ♣K1063 |

♠10965
♥J972
♦5
♣9875

Board (43)

| N-S | E-W | Contract | L | N-S | E-W | IMP |
|-----|-----|----------|--------|-----|-----|-----|
| 29 | 33 | 1NTx | E 2 ST | 280 | | |
| 33 | 29 | 2D | N 4 HQ | 130 | | |

44

♠84
♥7
♦AKJ652
♣K854

♠A95
♥AQ1042
♦Q8
♣AJ7

| | | |
|---|---|--------|
| N | | ♠KQJ10 |
| W | — | ♥KJ8 |
| E | — | ♦10974 |
| S | | ♣106 |

♠7632
♥9653
♦3
♣Q932

Board (44)

| N-S | E-W | Contract | L | N-S | E-W | IMP |
|-----|-----|----------|--------|------|-----|-----|
| 29 | 33 | 5Dx | S-4 HA | 1100 | | |
| 33 | 29 | 4H | W 4 DA | 420 | | |