

1

♠864
♥AJ
♦K6
♣Q65432

♠KJ72 ♠Q103
♥K943 ♥8752
♦QJ10 ♦874
♣J7 ♣AK9

Ⓝ

W E
S

♠A95
♥Q106
♦A9532
♣108

2

♠4
♥K763
♦K652
♣A753

♠102 ♠KJ9753
♥1095 ♥A
♦AJ84 ♦Q107
♣KQ42 ♣J96

Ⓝ

W E
S

♠AQ86
♥QJ842
♦93
♣108

3

♠9862
♥KJ962
♦4
♣Q97

♠73 ♠AQ
♥Q10753 ♥A
♦J987 ♦106532
♣A4 ♣KJ832

Ⓝ

W E
S

♠KJ1054
♥84
♦AKQ
♣1065

4

♠QJ942
♥KQ9
♦KJ7
♣108

♠87 ♠AK1053
♥AJ ♥732
♦A109642 ♦85
♣AKJ ♣976

Ⓝ

W E
S

♠6
♥108654
♦Q3
♣Q5432

Board (1) Av: NS=+30

Contract	N-S	E-W	IMP	Tie
3H	E-3	150	3	1
2NT	N 2	120	3	1
1NT	N 2	120	3	1
3C	N 3	110	2	2
2C	N 3	110	2	2
2H	E-2	100	2	2
2C	N 2	90	2	4
1NT	S 1	90	2	2
1NT	N 1	90	2	3
2H	W-1	50	1	2
2H	E-1	50	1	8
1NT	E-1	50	1	1
Passout			-1	4
3NT	N-1	50	-2	1
3C	N-1	50	-2	1
2NT	N-1	50	-2	1
1NT	S-1	50	-2	1
1H	E 1	80	-3	1
1NT	W 1	90	-3	1
3D	S-2	100	-4	1
2NT	S-2	100	-4	1
1NT	N-2	100	-4	1
2H	E 2	110	-4	3
3NT	N-3	150	-5	1

Board (2) Av: NS=+40

Contract	N-S	E-W	IMP	Tie
4Hx	S 4	790	13	2
4H	S 4	620	11	1
4Sx	E-2	300	6	1
3Sx	E-2	300	6	1
3H	S 4	170	4	1
4S	E-3	150	3	1
3H	S 3	140	3	2
4S	E-2	100	2	1
3S	E-2	100	2	6
2NT	W-2	100	2	1
3S	E-1	50	0	7
2S	E-1	50	0	3
Passout			-1	2
4H	S-1	100	-4	1
2S	E 2	110	-4	9
3S	E 3	140	-5	3
2S	E 3	140	-5	2
3NTxS-1		200	-6	1
3Sx	E 3	530	-11	1

Board (3) Av: NS=+10

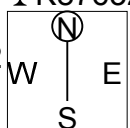
Contract	N-S	E-W	IMP	Tie
5Dx	W-2	500	10	2
2NT	E-3	300	7	1
5Dx	E-1	200	5	2
4Dx	W-1	200	5	2
3S	S 4	170	4	2
3S	S 3	140	4	5
3S	N 3	140	4	1
2S	S 3	140	4	2
4D	E-1	100	3	1
4C	E-1	100	3	1
4S	S-1	50	-2	1
3S	S-1	50	-2	7
4S	S-2	100	-3	3
3S	S-2	100	-3	6
3S	N-2	100	-3	1
3D	W 3	110	-3	1
4C	E 4	130	-4	2
3D	W 4	130	-4	1
4S	S-3	150	-4	3
4Sx	S-2	300	-7	1
4Sx	S-3	500	-11	1

Board (4) Av: NS=-130

Contract	N-S	E-W	IMP	Tie
3NT	W-3	300	10	1
3NT	W-2	200	8	1
3NT	E-2	200	8	6
2S	W-2	200	8	1
2H	N 2	110	6	1
3NT	E-1	100	6	3
2D	W 2	90	1	2
2S	W 2	110	1	8
2S	E 2	110	1	1
2D	W 3	110	1	1
3D	W 4	130	0	2
2D	W 4	130	0	3
3S	E 3	140	0	1
2S	W 3	140	0	1
2D	W 5	150	-1	3
2Hx	S-1	200	-2	1
2H	N-2	200	-2	1
2Cx	S-1	200	-2	1
2Hx	N-2	500	-9	2
3NT	E 3	600	-10	1
3NT	E 4	630	-11	2
3NT	E 5	660	-11	1
2NxxS-2		1000	-13	1
1Sx	N-4	1100	-14	1

5

♠ 94
 ♥ 98
 ♦ A72
 ♣ K87632
 ♠ Q83
 ♥ AQ10742
 ♦ 1086
 ♣ Q
 ♠ 106
 ♥ KJ65
 ♦ KQJ5
 ♣ AJ10
 ♠ AKJ752
 ♥ 3
 ♦ 943
 ♣ 954

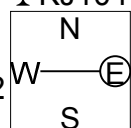


Board (5) Av: NS=-410

Contract	N-S	E-W	IMP	Tie
3NT E-2	100		11	1
5H E-1	50		10	1
4H W 4		420	0	10
4H E 4		420	0	34

6

♠ Q75
 ♥ 854
 ♦ A97
 ♣ KJ104
 ♠ K98
 ♥ KQ7
 ♦ Q10532
 ♣ A7
 ♠ 10643
 ♥ A62
 ♦ K64
 ♣ 982
 ♠ AJ2
 ♥ J1093
 ♦ J8
 ♣ Q653

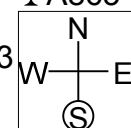


Board (6) Av: NS=-120

Contract	N-S	E-W	IMP	Tie
1NT W-2	200		8	1
2C N-1		50	2	2
1NT W 1		90	1	6
2H S-2		100	1	1
2C N-2		100	1	1
2S E 2		110	0	3
1NT W 2		120	0	18
1NT E 2		120	0	2
1NT W 3		150	-1	9
1NT E 3		150	-1	1
1NT W 4		180	-2	1
1NTxW 4		780	-12	1

7

♠ 96
 ♥ K94
 ♦ AJ93
 ♣ A865
 ♠ KJ7
 ♥ A10863
 ♦ KQ
 ♣ Q43
 ♠ A8432
 ♥ J5
 ♦ 876
 ♣ KJ7
 ♠ Q105
 ♥ Q72
 ♦ 10542
 ♣ 1092

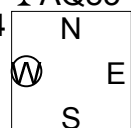


Board (7) Av: NS=-310

Contract	N-S	E-W	IMP	Tie
4S W-1	100		9	2
4S E-1	100		9	1
1NT W 2		120	5	2
3S E 3		140	5	1
2S E 3		140	5	5
2H W 3		140	5	1
1NT W 3		150	4	3
1NT E 3		150	4	1
3S W 4		170	4	8
2S E 4		170	4	2
2NT W 4		180	4	1
1NT W 4		180	4	2
3NT W 3		600	-7	2
4S W 4		620	-7	7
4S E 4		620	-7	4
4S W 5		650	-8	4

8

♠ Q86532
 ♥ Q32
 ♦ AQ83
 ♠ Q9874
 ♥ 104
 ♦ AJ
 ♣ 10542
 ♠ AK1063
 ♥ K9
 ♦ K108
 ♣ J76
 ♠ J52
 ♥ AJ7
 ♦ 97654
 ♣ K9

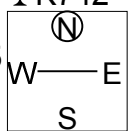


Board (8) Av: NS=+10

Contract	N-S	E-W	IMP	Tie
5Hx N 5	650		12	1
4Hx N 4	590		11	1
4Sx E-2	300		7	2
4Sx E-1	100		3	1
4S E-2	100		3	5
3S E-2	100		3	1
4S W-1	50		1	1
4S E-1	50		1	13
3S E-1	50		1	1
5H N-1		50	-2	8
5Hx N-1		100	-3	5
3S E 3		140	-4	1
2S E 3		140	-4	1
3S E 4		170	-5	1
3S E 5		200	-5	1
4S E 4		420	-10	2
4Sx E 4		590	-12	1

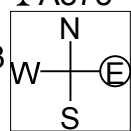
9

♠AJ
 ♥109642
 ♦103
 ♣K742
 ♠875
 ♥KQJ5
 ♦J964
 ♣Q10
 ♠Q109642
 ♥A3
 ♦72
 ♣A93
 ♠K3
 ♥87
 ♦AKQ85
 ♣J865



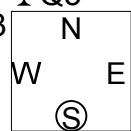
10

♠Q1072
 ♥KQ4
 ♦82
 ♣A875
 ♠J6
 ♥A1083
 ♦A643
 ♣964
 ♠K85
 ♥J952
 ♦KQJ107
 ♣3
 ♠A943
 ♥76
 ♦95
 ♣KQJ102



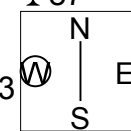
11

♠8
 ♥J876
 ♦AKJ965
 ♣Q5
 ♠A10753
 ♥A942
 ♦102
 ♣74
 ♠9642
 ♥KQ105
 ♦87
 ♣A106
 ♠KQJ
 ♥3
 ♦Q43
 ♣KJ9832



12

♠QJ1075
 ♥7632
 ♦J4
 ♣87
 ♠2
 ♥A94
 ♦AK10863
 ♣953
 ♠K983
 ♥Q5
 ♦Q2
 ♣KJ1042
 ♠A64
 ♥KJ108
 ♦975
 ♣AQ6



Board (9) Av: NS=-60

Contract	N-S	E-W	IMP	Tie
4S E-3	300		8	1
3S E-2	200		6	1
3C S 3	110		5	4
3C N 3	110		5	1
4S E-1	100		4	2
3S E-1	100		4	1
2S E-1	100		4	1
4C S-1		50	0	1
3H N-1		50	0	2
3D S-1		50	0	1
3D N-1		50	0	1
3C S-1		50	0	6
2NT S-1		50	0	1
4C N-2		100	-1	1
3H S-2		100	-1	1
3D S-2		100	-1	1
3C S-2		100	-1	1
2S E 2		110	-2	2
3S E 3		140	-2	4
2S E 3		140	-2	6
4C S-3		150	-3	1
3S E 4		170	-3	1
2S E 4		170	-3	1
3NT N-4		200	-4	3
3Sx E 3		730	-12	1

Board (10) Av: NS=-30

Contract	N-S	E-W	IMP	Tie
3S S 4	170		5	1
3S N 3	140		5	5
4C S 4	130		4	1
2S S 2	110		4	1
3H E-1	100		4	1
1NT N 1	90		3	1
Passout			1	15
4S S-1		100	-2	2
4S N-1		100	-2	3
4C N-1		100	-2	1
3S S-1		100	-2	3
3S N-1		100	-2	3
3D W 3		110	-2	2
3D E 3		110	-2	1
4S S-2		200	-5	3
4S N-2		200	-5	1
3NT N-2		200	-5	1
3Dx E 3		670	-12	1

Board (11) Av: NS=+80

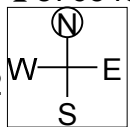
Contract	N-S	E-W	IMP	Tie
3NTxS 5	750		12	1
3NT S 5	460		9	4
5D N 5	400		8	2
3NT N 3	400		8	1
4Sx W-2	300		6	1
4C S 5	150		2	1
4D S 4	130		2	1
4D N 4	130		2	6
4C S 4	130		2	3
3C S 4	130		2	1
3S W-1	50		-1	2
5D S-1		50	-4	1
5D N-1		50	-4	8
5C S-1		50	-4	3
3NT S-1		50	-4	1
3NT N-1		50	-4	1
5Dx N-1		100	-5	2
5Cx S-1		100	-5	1
3NT S-2		100	-5	4
3NT N-2		100	-5	1
3S W 3		140	-6	1

Board (12) Av: NS=-50

Contract	N-S	E-W	IMP	Tie
3NT W-2	100		4	3
3D W-2	100		4	4
3D E-2	100		4	1
3NT W-1	50		3	1
3NT E-1	50		3	9
3D W-1	50		3	4
2D W-1	50		3	2
2D W 2		90	-1	1
3D W 3		110	-2	1
2NT E 2		120	-2	9
3C E 4		130	-2	1
3D W 5		150	-3	2
2NT E 3		150	-3	3
3NT E 3		400	-8	3
3NT E 4		430	-9	1
3NT E 5		460	-9	1

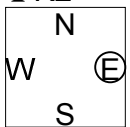
13

♠ A83
 ♥ 7
 ♦ 987
 ♣ 876543
 ♠ J962
 ♥ 5
 ♦ AK1062
 ♣ K109
 ♠ Q105
 ♥ AK63
 ♦ J53
 ♣ QJ2
 ♠ K74
 ♥ QJ109842
 ♦ Q4
 ♣ A



14

♠ Q8654
 ♥ 65
 ♦ A1098
 ♣ K2
 ♠ J10
 ♥ A3
 ♦ J75
 ♣ AQJ1085
 ♠ AK7
 ♥ 874
 ♦ K63
 ♣ 7643
 ♠ 932
 ♥ KQJ1092
 ♦ Q42
 ♣ 9



Board (13) Av: NS=-330

Contract	N-S	E-W	IMP	Tie
3Hx S 3	730		14	1
2Hx S 2	670		14	2
3NT E-4	400		12	1
4S E-2	200		11	1
2H S 2	110		10	3
3D W 4	130		5	1
2NT E 3	150		5	5
4H S-2	200		4	1
3Hx S-1	200		4	4
3Hx N-1	200		4	1
4Hx S-2	500		-5	2
4Hx N-2	500		-5	1
3NT W 3	600		-7	1
3NT E 3	600		-7	17
3NT E 4	630		-7	4
3NTxE 3	750		-9	1

Board (14) Av: NS=-110

Contract	N-S	E-W	IMP	Tie
3NT E-3	150		6	1
3H S 3	140		6	1
2H S 2	110		6	3
5C W-1	50		4	4
4C W-1	50		4	2
3NT W-1	50		4	8
3NT E-1	50		4	1
3H S-1	50		2	4
2H S-1	50		2	2
3S N-2	100		0	1
3H S-2	100		0	1
3H N-2	100		0	1
4C W 4	130		-1	4
3NT W 3	400		-7	9
3NT E 3	400		-7	1
3NT W 4	430		-8	2
3NT E 4	430		-8	1

18th NEC CUP Qualifying Round 9 Thursday, April 18, 2013

36

♠ Q1032
♥ 10876
♦
♣ J10765

♠ 98
♥ KJ4
♦ Q6532
♣ Q93

♠ AK75
♥ 9532
♦ J109
♣ K8

♠ J64
♥ AQ
♦ AK874
♣ A42

Board (36)

N-S	E-W	Contract	L	N-S	E-W	IMP
33	47	2D	E-1 S4	100		
47	33	2D	E 2 S4		90	

37

♠ KQ97
♥ J9876
♦ J86
♣ 7

♠ 532
♥ Q43
♦ K1097
♣ J95

♠ A10
♥ K1052
♦ AQ2
♣ A1086

♠ J864
♥ A
♦ 543
♣ KQ432

Board (37)

N-S	E-W	Contract	L	N-S	E-W	IMP
33	47	1NT	E 4 C3		180	
47	33	1NT	E 5 C3		210	

38

♠ AQJ3
♥ AJ6
♦ 84
♣ Q754

♠ 52
♥ K1075
♦ Q32
♣ AJ86

♠ 109864
♥ Q
♦ AKJ96
♣ 109

♠ K7
♥ 98432
♦ 1075
♣ K32

Board (38)

N-S	E-W	Contract	L	N-S	E-W	IMP
33	47	1NT	W 2 HJ		120	
47	33	1NT	S-1 D2		50	

39

♠ J642
♥ 97
♦ J1074
♣ 862

♠ AQ10973
♥ 865
♦ 6
♣ KQ5

♠ AK1043
♥ AK953
♦ J97
♣ J97

♠ K85
♥ QJ2
♦ Q82
♣ A1043

Board (39)

N-S	E-W	Contract	L	N-S	E-W	IMP
33	47	4H	E 5 CA		650	
47	33	4H	E 5 C8		650	

18th NEC CUP Qualifying Round 9 Thursday, April 18, 2013

40

♠AJ104
 ♥K108
 ♦A7
 ♣A1052
 ♠9853
 ♥7
 ♦Q10965
 ♣K86
 N
 W
 E
 S
 ♠62
 ♥AQ962
 ♦KJ8
 ♣743
 ♠KQ7
 ♥J543
 ♦432
 ♣QJ9

Board (40)

N-S	E-W	Contract	L	N-S	E-W
33	47	3NT N 5 H6	460		
47	33	3NT N 4 H6	430		

IMP

41

♠J9863
 ♥2
 ♦8742
 ♣AQ6
 ♠Q2
 ♥J973
 ♦K6
 ♣K8753
 N
 W
 E
 S
 ♠K105
 ♥AQ85
 ♦AQJ
 ♣J102
 ♠A74
 ♥K1064
 ♦10953
 ♣94

Board (41)

N-S	E-W	Contract	L	N-S	E-W
33	47	4H E-2 DT	200		
47	33	4H E-2 C9	200		

IMP

42

♠K73
 ♥A6
 ♦J983
 ♣K1043
 ♠AJ1054
 ♥J10
 ♦7652
 ♣A6
 N
 W
 E
 S
 ♠2
 ♥Q954
 ♦AKQ
 ♣QJ987
 ♠Q986
 ♥K8732
 ♦104
 ♣52

Board (42)

N-S	E-W	Contract	L	N-S	E-W
33	47	3NT E-1 H3	100		
47	33	3NT E 4 DT	630		

IMP