

**33**

♠98  
♥AJ1092  
♦Q10  
♣K1092

♠AK3  
♥43  
♦A762  
♣QJ63

♠542  
♥K8765  
♦53  
♣A87

♠QJ1076  
♥Q  
♦KJ984  
♣54

Board (33)

N-S	E-W	Contract	L	N-S	E-W	IMP
2	3	2C	N-4 D5	200		
3	2	2C	S-3 SA	150		

**34**

♠A  
♥4  
♦765432  
♣K8762

♠KQJ98  
♥KQ95  
♦J10  
♣A4

♠7432  
♥AJ63  
♦AK  
♣Q103

♠1065  
♥10872  
♦Q98  
♣J95

Board (34)

N-S	E-W	Contract	L	N-S	E-W	IMP
2	3	6H	E-1 H2	50		
3	2	3NT	E 5 C9	460		

**35**

♠Q75  
♥  
♦AQ8764  
♣J932

♠83  
♥K842  
♦K52  
♣A1087

♠K64  
♥QJ106  
♦1093  
♣Q64

♠AJ1092  
♥A9753  
♦J  
♣K5

Board (35)

N-S	E-W	Contract	L	N-S	E-W	IMP
2	3	4S	S 4 D2	420		
3	2	4S	S 4 S3	420		

**36**

♠J4  
♥Q975  
♦J7652  
♣106

♠AK102  
♥10  
♦1093  
♣Q9853

♠9863  
♥AK2  
♦84  
♣AK72

♠Q75  
♥J8643  
♦AKQ  
♣J4

Board (36)

N-S	E-W	Contract	L	N-S	E-W	IMP
2	3	4S	E 4 DA	620		
3	2	4S	E 4 DQ	620		

**37**

♠KQ2  
♥2  
♦AJ87543  
♣106

♠A87  
♥98765  
♦Q102  
♣A7

♠AJ3  
♥K96  
♦KQ98542  
♣KQ98543

♠J1096543  
♥KQ104  
♦  
♣J3

Board (37)

N-S	E-W	Contract	L	N-S	E-W	IMP
2	3	4S	S-1 CA	100		
3	2	5Cx	E 5 HK	550		

**38**

♠KJ10876  
♥K2  
♦A102  
♣J3

♠Q94  
♥Q9873  
♦KQ65  
♣8

♠3  
♥J  
♦J974  
♣AKQ10952

♠A52  
♥A10654  
♦83  
♣764

Board (38)

N-S	E-W	Contract	L	N-S	E-W	IMP
2	3	3S	N 3 CA	140		
3	2	4S	N-2 CA	100		

**39**

♠J63  
♥62  
♦K10974  
♣KJ2

♠K8  
♥Q1053  
♦AJ3  
♣7654

♠Q10942  
♥AKJ97  
♦82  
♣Q

♠A75  
♥84  
♦Q65  
♣A10983

Board (39)

N-S	E-W	Contract	L	N-S	E-W	IMP
2	3	4H	E 5 H4	650		
3	2	4H	E 5 S3	650		

**40**

♠AJ74  
♥QJ65  
♦2  
♣J864

♠KQ  
♥AK7  
♦KJ984  
♣K75

♠962  
♥1042  
♦Q1076  
♣AQ3

♠10853  
♥983  
♦A53  
♣1092

Board (40)

N-S	E-W	Contract	L	N-S	E-W	IMP
2	3	3NT	E 3 S8	400		
3	2	3NT	W 4 C6	430		

**41**

♠4  
♥4  
♦9853  
♣KQ98743

♠AKQ7  
♥KQ  
♦Q102  
♣10652

♠9653  
♥A87653  
♦AJ  
♣A

♠J1082  
♥J1092  
♦K764  
♣J

Board (41)

N-S	E-W	Contract	L	N-S	E-W	IMP
2	3	4H	E 5 CJ	650		
3	2	6S	W 6 H4	1430		

**42**

♠A8  
♥J82  
♦1062  
♣J9632

♠J10742  
♥109  
♦QJ54  
♣A4

♠K96  
♥A7653  
♦AK9  
♣75

♠Q53  
♥KQ4  
♦873  
♣KQ108

Board (42)

N-S	E-W	Contract	L	N-S	E-W	IMP
2	3	2S	W 3 C2	140		
3	2	2S	W 3 D2	140		

**43**

♠42  
♥A103  
♦AJ74  
♣KQ72

♠KQ5  
♥Q62  
♦10865  
♣A85

♠J10876  
♥J95  
♦2  
♣10963

♠A93  
♥K874  
♦KQ93  
♣J4

Board (43)

N-S	E-W	Contract	L	N-S	E-W	IMP
2	3	3NT	S 5 C5	460		
3	2	3NT	S 3 SK	400		

**44**

♠762  
♥Q973  
♦AJ4  
♣1054

♠AQJ  
♥AJ6  
♦Q973  
♣J97

♠4  
♥K1054  
♦K108652  
♣86

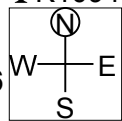
♠K109853  
♥82  
♦  
♣AKQ32

Board (44)

N-S	E-W	Contract	L	N-S	E-W	IMP
2	3	3S	S 3 D3	140		
3	2	4D	E-1 CA	50		

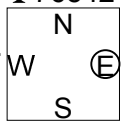
45

♠ A842  
 ♥ Q  
 ♦ J943  
 ♣ K1094  
 ♠ KJ5    ♠ Q107  
 ♥ 1094   ♥ AK872  
 ♦ AKQ6   ♠ 7  
 ♣ AQ6    ♣ 8532  
 ♠ 963  
 ♥ J653  
 ♦ 10852  
 ♣ J7



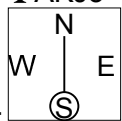
46

♠ A  
 ♥ KQJ92  
 ♦ 102  
 ♣ 76542  
 ♠ J986    ♠ K102  
 ♥ A7654   ♥ 103  
 ♦ 986    ♦ AK3  
 ♣ K      ♣ AQJ93  
 ♠ Q7543  
 ♥ 8  
 ♦ QJ754  
 ♣ 108



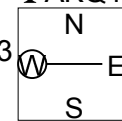
47

♠ 103  
 ♥ A962  
 ♦ AK4  
 ♣ AKJ3  
 ♠ Q87    ♠ AJ92  
 ♥ K105   ♥ QJ3  
 ♦ 862    ♦ Q95  
 ♣ 10864   ♣ 975  
 ♠ K654  
 ♥ 874  
 ♦ J1073  
 ♣ Q2



48

♠ Q8  
 ♥ K82  
 ♦ 1074  
 ♣ AKQ106  
 ♠ KJ62    ♠ A4  
 ♥ AJ763   ♥ 1054  
 ♦ A6      ♦ Q9532  
 ♣ 72      ♣ J43  
 ♠ 109753  
 ♥ Q9  
 ♦ KJ8  
 ♣ 985



Board (45)

N-S	E-W	Contract	L	N-S	E-W	IMP
2	3	4H	E 4	S8	620	
3	2	3NT	W 5	C3	660	

Board (46)

N-S	E-W	Contract	L	N-S	E-W	IMP
2	3	2H	N-3	DA	150	
3	2	3C	E-1	H8	50	

Board (47)

N-S	E-W	Contract	L	N-S	E-W	IMP
2	3	3NT	N 4	HQ	630	
3	2	1NT	N 2	HQ	120	

Board (48)

N-S	E-W	Contract	L	N-S	E-W	IMP
2	3	1NT	N-1	H4	50	
3	2	2S	S-1	C8	50	