

1

♠65
♥AQ53
♦K103
♣9875

♠A843
♥98
♦AQ42
♣J63

♠Q72
♥K762
♦7
♣AKQ102

♠KJ109
♥J104
♦J9865
♣4

Board (1) Av: NS=-20

N-S	E-W	Contract	L	N-S	E-W	IMP
1	16	4Sx	E-2 D5	300		8
16	1	2Dx	S-1 H9		100	-2
2	14	3NT	W-2 D6	100		3
14	2	1NT	E 2 HJ		120	-3
3	6	5C	E-2 HJ	100		3
6	3	3NT	E-2 S6	100		3
4	20	4S	W-2 D3	100		3
20	4	4S	W-1 C7	50		2
5	9	3NT	E-2 H3	100		3
9	5	1NT	E 3 SJ		150	-4
7	19	2S	W 2 S6		110	-3
19	7	3NT	W-1 C7	50		2
8	11	1NT	E 3 SJ		150	-4
11	8	3C	E-3 C4	150		5
10	17	3NT	W-1 H3	50		2
17	10	3NT	W 3 S6		400	-9
12	21	3NT	W-1 H3	50		2
21	12	3NT	W-1 HA	50		2
13	15	3NT	E-1 HT	50		2
15	13	3Dx	S-1 H9		100	-2
18	24	3NT	W-1 HA	50		2
24	18	3NT	W 3 SK		400	-9
22	23	3Dx	N-2 H8		300	-7
23	22	3NT	W-1 S5	50		2

2

♠53
♥982
♦K104
♣J10874

♠AK10
♥QJ
♦AQJ986
♣52

♠QJ92
♥A1076
♦32
♣A96

♠8764
♥K543
♦75
♣KQ3

Board (2) Av: NS=-330

N-S	E-W	Contract	L	N-S	E-W	IMP
1	16	3NT	E 6 H3		490	-4
16	1	3NT	E 3 CK		400	-2
2	14	3NT	E 6 H3		490	-4
14	2	4NT	E 5 S7		460	-4
3	6	3NT	E 3 CK		400	-2
6	3	3NT	E 3 S8		400	-2
4	20	3NT	W-1 CJ	50		9
20	4	3NT	E 5 S8		460	-4
5	9	3NT	E-1 H3	50		9
9	5	4NT	N-2 CQ		200	4
7	19	4NT	E 5 S7		460	-4
19	7	6NT	E-4 CK	200		11
8	11	4NT	E-2 CQ	100		10
11	8	3NT	E 3 S8		400	-2
10	17	3NT	E 3 CK		400	-2
17	10	3NT	E 5 H3		460	-4
12	21	3NT	E 6 H3		490	-4
21	12	3NT	E 5 S7		460	-4
13	15	3NT	E 3 CQ		400	-2
15	13	3NT	E 3 S7		400	-2
18	24	3NT	E 6 H4		490	-4
24	18	3NT	E-1 CK	50		9
22	23	3NT	E 3 CQ		400	-2
23	22	3NT	W 3 C8		400	-2

3

♠A5
♥AJ85
♦AKQ72
♣97

♠J96
♥Q109643
♦9
♣AKQ

♠KQ102
♥7
♦J643
♣8654

♠8743
♥K2
♦1085
♣J1032

Board (3) Av: NS=+40

N-S	E-W	Contract	L	N-S	E-W	IMP
1	16	3NT	N-1 C6		50	-3
16	1	2NT	N 2 H7	120		2
2	14	1NT	N 2 H7	120		2
14	2	1NT	N 1 SK	90		2
3	6	2H	W-2 DA	200		4
6	3	2H	E-1 DA	100		2
4	20	3D	N-1 H7		50	-3
20	4	3Dx	N-1 H7		100	-4
5	9	3NT	N-1 H3		50	-3
9	5	4D	N-2 H7		100	-4
7	19	1NT	N 2 H7	120		2
19	7	1NT	N 1 SQ	90		2
8	11	2H	W-1 DK	100		2
11	8	3D	N-1 H7		50	-3
10	17	2NT	N 2 H7	120		2
17	10	3D	N-1 H7		50	-3
12	21	1NT	N 3 C3	150		3
21	12	2H	W-1 DK	100		2
13	15	3D	N-1 SK		50	-3
15	13	1NT	N 2 H7	120		2
18	24	1NT	N 2 H7	120		2
24	18	3NT	N-1 H7		50	-3
22	23	1NT	N 1 SK	90		2
23	22	3D	N-1 H8		50	-3

4

♠973
♥107542
♦1073
♣104

♠542
♥J8
♦QJ9
♣KJ852

♠Q108
♥K63
♦A652
♣A93

♠AKJ6
♥AQ9
♦K84
♣Q76

Board (4) Av: NS=-30

N-S	E-W	Contract	L	N-S	E-W	IMP
1	16	2S	S 2 DQ		110	4
16	1	2H	N-1 D5		100	-2
2	14	2H	N 2 C3	110		4
14	2	2H	N 2 C3	110		4
3	6	2H	N 2 H3	110		4
6	3	3H	N-1 DQ		100	-2
4	20	2NT	S-3 DQ		300	-7
20	4	3H	N-1 CA		100	-2
5	9	1NT	N-3 H3		300	-7
9	5	2H	N 3 ST	140		5
7	19	3H	N-2 D5		200	-5
19	7	2H	N 3 C2	140		5
8	11	3H	N-1 D2		100	-2
11	8	2H	N 2 C3	110		4
10	17	2H	N-1 C3		100	-2
17	10	1NT	S-1 C5		100	-2
12	21	2H	N 2 CA	110		4
21	12	1NT	W 2 H4		120	-3
13	15	2H	N 2 S8	110		4
15	13	2H	N 2 D2	110		4
18	24	2H	N 2 DA	110		4
24	18	2H	N-2 D5		200	-5
22	23	1NT	E 4 D2		180	-4
23	22	2C	W 2 S7		90	-2

5

♠K
♥932
♦QJ963
♣J754

♠Q52
♥AKQ
♦A107
♣KQ32

♠A1087
♥106
♦K52
♣A1086

♠J9643
♥J8754
♦84
♣9

Board (5) Av: NS=-350

N-S	E-W	Contract	L	N-S	E-W	IMP
1	16	3NT	E 6 S4	490		-4
16	1	4NT	W 4 DQ	430		-2
2	14	3NT	E 6 S4	490		-4
14	2	6C	E-2 D8	100		10
3	6	6C	E-1 D8	50		9
6	3	6C	E-1 H3	50		9
4	20	3NT	W 3 DQ	400		-2
20	4	3NT	W 4 DQ	430		-2
5	9	3NT	E 4 H3	430		-2
9	5	6C	E 6 S3	920		-11
7	19	6C	E-1 H9	50		9
19	7	6NT	W-2 H3	100		10
8	11	6C	E 6 H5	920		-11
11	8	6C	W-2 H2	100		10
10	17	6NT	W-2 H2	100		10
17	10	6C	W 6 D2	920		-11
12	21	6NT	W 6 S4	990		-12
21	12	6C	E-1 H5	50		9
13	15	4NT	W 4 DJ	430		-2
15	13	3NT	E 6 S2	490		-4
18	24	6NT	E 6 S3	990		-12
24	18	4NT	E 4 D8	430		-2
22	23	6C	E-2 H2	100		10
23	22	3NT	W 5 D6	460		-3

6

♠AKJ876
♥
♦KQJ74
♣A9

♠1095
♥107643
♦863
♣105

♠AQJ52
♥95
♦KJ8732
♣

♠Q432
♥K98
♦A102
♣Q64

Board (6) Av: NS=+1090

N-S	E-W	Contract	L	N-S	E-W	IMP
1	16	5Hx	E-3 S3	800		-7
16	1	6S	N 7 HA	1010		-2
2	14	6S	N 7 D9	1010		-2
14	2	6S	N 7 HA	1010		-2
3	6	6S	S 7 H3	1010		-2
6	3	7S	N 7 H4	1510		9
4	20	6S	N 7 HA	1010		-2
20	4	7S	S 7 S5	1510		9
5	9	6S	N 7 SQ	1010		-2
9	5	7S	S 7 S3	1510		9
7	19	5S	S 7 CT	510		-11
19	7	6D	N 7 H2	940		-4
8	11	7S	S 7 CT	1510		9
11	8	6S	S 7 CT	1010		-2
10	17	7S	S 7 CT	1510		9
17	10	6S	S 7 D2	1010		-2
12	21	6S	N 7 HA	1010		-2
21	12	6S	S 7 CT	1010		-2
13	15	7S	N 7 C2	1510		9
15	13	4S	S 7 CT	510		-11
18	24	7S	S 7 H3	1510		9
24	18	3D	N 7 HA	190		-14
22	23	4S	N 7 HA	510		-11
23	22	7S	S 7 C7	1510		9

7

♠A92
♥A9632
♦5
♣KQ95

♠65
♥K874
♦AJ643
♣62

♠QJ874
♥10
♦K10
♣A10874

♠K103
♥QJ5
♦Q9872
♣J3

Board (7) Av: NS=+140

N-S	E-W	Contract	L	N-S	E-W	IMP
1	16	3Dx	W-3 D4	800		12
16	1	2H	N 4 HT	170		1
2	14	3H	N 3 HT	140		0
14	2	2S	W-2 D5	200		2
3	6	4H	N-1 SQ	100		-6
6	3	2H	N 3 S4	140		0
4	20	3H	N 4 SQ	170		1
20	4	2H	N 4 HT	170		1
5	9	2H	N 2 SQ	110		-1
9	5	4H	N-1 HT	100		-6
7	19	3H	N 3 SQ	140		0
19	7	3H	N 4 SQ	170		1
8	11	3C	E-3 HQ	300		4
11	8	2H	N 3 DK	140		0
10	17	3H	N 3 SJ	140		0
17	10	3H	N 4 SQ	170		1
12	21	2H	N 3 SQ	140		0
21	12	3H	N 4 SQ	170		1
13	15	2H	N 3 SQ	140		0
15	13	4H	N-1 DK	100		-6
18	24	4H	N-1 DK	100		-6
24	18	2C	N 3 HT	110		-1
22	23	4H	N 4 SQ	620		10
23	22	3H	N 3 SQ	140		0

8

♠J1073
♥K9854
♦A7
♣K3

♠A65
♥A76
♦J1064
♣J86

♠982
♥QJ102
♦3
♣A10942

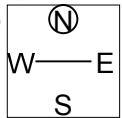
♠KQ4
♥3
♦KQ9852
♣Q75

Board (8) Av: NS=-20

N-S	E-W	Contract	L	N-S	E-W	IMP
1	16	3NT	S-1 C6	50		-1
16	1	3NT	N-1 C6	50		-1
2	14	3NT	N-1 C9	50		-1
14	2	2S	S 4 DJ	170		5
3	6	3NT	N-1 C4	50		-1
6	3	3NT	N-1 C2	50		-1
4	20	3NT	N-1 CT	50		-1
20	4	2NT	N 2 HQ	120		4
5	9	3NT	N-1 H3	50		-1
9	5	3D	S 3 C6	110		4
7	19	3NT	N-1 C4	50		-1
19	7	3NT	S-3 C2	150		-4
8	11	1NT	S 4 D6	180		5
11	8	3NT	S-1 DJ	50		-1
10	17	3NT	N-1 C9	50		-1
17	10	3NT	S-2 SA	100		-2
12	21	3NT	N-1 C4	50		-1
21	12	3NT	N 3 C4	400		9
13	15	3NT	S-1 H6	50		-1
15	13	3NT	S-1 S3	50		-1
18	24	3NT	N-1 C4	50		-1
24	18	3NT	N-1 C2	50		-1
22	23	3NT	N-2 S3	100		-2
23	22	3NT	S-2 C6	100		-2

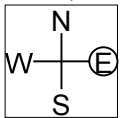
9

♠ Q2
 ♥ K1093
 ♦ KQ92
 ♣ J65
 ♠ J10986
 ♥ Q72
 ♦ A10
 ♣ 872
 ♠ K743
 ♥ J4
 ♦ J843
 ♣ Q94
 ♠ A5
 ♥ A865
 ♦ 765
 ♣ AK103



10

♠ 109742
 ♥ AJ52
 ♦
 ♣ AQJ2
 ♠ J5
 ♥ KQ1087
 ♦ KJ9
 ♣ 843
 ♠ 863
 ♥ 6
 ♦ A1052
 ♣ K10976
 ♠ AKQ
 ♥ 943
 ♦ Q87643
 ♣ 5



Board (9) Av: NS=+380

Board (10) Av: NS=+80

N-S	E-W	Contract	L	N-S	E-W	IMP
1	16	4H	S 4 SJ	420		1
16	1	4H	N 4 D4	420		1
2	14	4H	S 5 SJ	450		2
14	2	3NT	S-1 SJ		50	-10
3	6	4H	S 4 SJ	420		1
6	3	4H	N 4 SJ	420		1
4	20	4H	S 4 SJ	420		1
20	4	4H	S 4 SJ	420		1
5	9	4H	N 4 D2	420		1
9	5	4H	N 4 D4	420		1
7	19	4H	S 4 SJ	420		1
19	7	4H	S 5 SJ	450		2
8	11	4H	S 4 SJ	420		1
11	8	3NT	N 4 S3	430		2
10	17	4H	S 4 ST	420		1
17	10	4H	S 4 SJ	420		1
12	21	4H	S 4 SJ	420		1
21	12	3NT	S-1 SJ		50	-10
13	15	4H	S 5 SJ	450		2
15	13	4H	S 5 ST	450		2
18	24	4H	S 4 SJ	420		1
24	18	4H	S 4 SJ	420		1
22	23	3NT	N-1 SJ		50	-10
23	22	4H	S 4 SJ	420		1

N-S	E-W	Contract	L	N-S	E-W	IMP
1	16	4S	N 4 H6	620		11
16	1	4S	N-1 C6		100	-5
2	14	3S	S 3 HK	140		2
14	2	4S	S-1 HK		100	-5
3	6	4S	S-1 HK		100	-5
6	3	4S	N-1 HK		100	-5
4	20	4S	N 4 H6	620		11
20	4	3S	N 4 H6	170		3
5	9	4S	N-1 H3		100	-5
9	5	4S	S-1 HK		100	-5
7	19	4S	N-1 H6		100	-5
19	7	4S	S-1 HK		100	-5
8	11	4S	S-1 HK		100	-5
11	8	2S	N 3 H6	140		2
10	17	4S	N-1 H6		100	-5
17	10	4S	N 4 H6	620		11
12	21	4S	N-1 H6		100	-5
21	12	3S	S 3 HK	140		2
13	15	4S	S-1 HK		100	-5
15	13	3NT	N 3 H	600		11
18	24	4S	S-1 HK		100	-5
24	18	4S	N-1 H3		100	-5
22	23	4S	N 4 H6	620		11
23	22	4S	N-1 H6		100	-5