

1

♠Q
 ♠109632
 ♠AK5
 ♠9864

♠J92
 ♠AKQ4
 ♠J8
 ♠A732

♠8654
 ♠J875
 ♠1093
 ♠J10

♠AK1073
 ♠Q7642
 ♠KQ5

Board (1) Av: NS=+210

N-S	E-W	Contract	L	N-S	E-W	IMP
1	13	5D	S 6 HA	420		5
13	1	3D	S 6 HA	170		-1
2	14	3NT	N 5 H5	460		-6
14	2	3D	S 5 HA	150		-2
3	15	3D	N 6 CJ	170		-1
15	3	2Hx	E-2 SA	300		3
5	9	4S	S-1 HA		50	-6
9	5	2D	S 4 HA	130		-2
6	10	2D	S 5 HA	150		-2
10	6	3Hx	E-3 SA	500		7
7	11	2S	S 2 HA	110		-3
11	7	2D	S 5 HK	150		-2
8	12	5D	S 5 HA	400		5
12	8	4S	S-2 HA		100	-7

2

♠J6
 ♠AK8
 ♠A943
 ♠J985

♠K5
 ♠J1032
 ♠J87
 ♠10643

♠AQ3
 ♠Q4
 ♠10652
 ♠AQ72

♠1098742
 ♠9765
 ♠KQ
 ♠K

Board (2) Av: NS=+90

N-S	E-W	Contract	L	N-S	E-W	IMP
1	13	2NT	N-1 CJ		100	-5
13	1	3S	S 3 H5	140		2
2	14	2S	N 3 D5	140		2
14	2	1NT	E-3 ST	150		2
3	15	1NT	E-1 ST	50		-1
15	3	1NT	E-2 ST	100		0
5	9	3C	E-3 DK	150		2
9	5	2S	N 2 HQ	110		1
6	10	3S	S-1 HJ		100	-5
10	6	2C	E-1 ST	50		-1
7	11	1NT	E-2 S9	100		0
11	7	1NT	E-3 ST	150		2
8	12	1NT	E-3 ST	150		2
12	8	1NT	E-1 ST	50		-1

3

♠Q109
 ♠1074
 ♠8752
 ♠J87

♠A
 ♠AKJ53
 ♠Q1096
 ♠542

♠KJ6
 ♠862
 ♠AK
 ♠AKQ103

♠875432
 ♠Q9
 ♠J43
 ♠96

Board (3) Av: NS=-1770

N-S	E-W	Contract	L	N-S	E-W	IMP
1	13	7NT	E 7 S8	2220		-10
13	1	6NT	E 7 S8	1470		7
2	14	7H	W 7 H7	2210		-10
14	2	6H	W 7 S9	1460		7
3	15	6NT	E 7 S5	1470		7
15	3	7H	W 7 ST	2210		-10
5	9	6NT	E 7 S8	1470		7
9	5	7NT	E 7 S8	2220		-10
6	10	7NT	E 7 C9	2220		-10
10	6	6H	W 7 S9	1460		7
7	11	6H	W 7 ST	1460		7
11	7	6H	W 7 ST	1460		7
8	12	6H	W 7 ST	1460		7
12	8	7C	E 7 S8	2140		-9

4

♠J102
 ♠AK764
 ♠873
 ♠K10

♠AQ976
 ♠32
 ♠AK104
 ♠J5

♠K4
 ♠J985
 ♠Q96
 ♠A864

♠853
 ♠Q10
 ♠J52
 ♠Q9732

Board (4) Av: NS=-450

N-S	E-W	Contract	L	N-S	E-W	IMP
1	13	3S	W 5 HA	200		6
13	1	2NT	E 4 C2	180		7
2	14	2Hx	N-3 SK	800		-8
14	2	3NT	E 4 C3	630		-5
3	15	2S	W 5 HA	200		6
15	3	3NT	E 4 C3	630		-5
5	9	3NT	E 4 C3	630		-5
9	5	2S	W 5 HA	200		6
6	10	2S	W 5 HA	200		6
10	6	3NT	E 4 HQ	630		-5
7	11	3NT	E 4 HQ	630		-5
11	7	3NT	E 3 D2	600		-4
8	12	3NT	E 4 C3	630		-5
12	8	2S	W 4 HK	170		7

5

♠J9873
 ♠85
 ♠94
 ♠Q1062

♠A1054
 ♠10
 ♠K76
 ♠KJ983

♠62
 ♠AJ943
 ♠QJ82
 ♠54

♠KQ
 ♠KQ762
 ♠A1053
 ♠A7

Board (5) Av: NS=-50

N-S	E-W	Contract	L	N-S	E-W	IMP
1	13	2H	S-2 HT	200		-4
13	1	1NTx	E 1 H2	180		-4
2	14	2NT	S-1 C8	100		-2
14	2	2H	S-2 HT	200		-4
3	15	1NT	E-1 H2	50		3
15	3	2H	S 2 HT	110		4
5	9	2D	E-2 SK	100		4
9	5	2D	E-3 HK	150		5
6	10	2C	N-2 S6	200		-4
10	6	3S	S-1 HT	100		-2
7	11	1Hx	S-1 HT	200		-4
11	7	2H	S-1 HT	100		-2
8	12	1H	S 2 HT	110		4
12	8	2NT	S 2 D6	120		5

6

♠KJ
 ♠Q87
 ♠Q864
 ♠QJ43

♠A10
 ♠A105
 ♠K109752
 ♠AK

♠Q8762
 ♠KJ932
 ♠A
 ♠85

♠9543
 ♠64
 ♠J3
 ♠109762

Board (6) Av: NS=-340

N-S	E-W	Contract	L	N-S	E-W	IMP
1	13	6NT	W-1 CJ	100		10
13	1	5H	E 5 C2	650		-7
2	14	3NT	W 3 C3	600		-6
14	2	3NT	W 4 C3	630		-7
3	15	6H	E 6 CT	1430		-14
15	3	6H	E-1 CT	100		10
5	9	6H	E-1 CT	100		10
9	5	3NT	W 4 C3	630		-7
6	10	6H	E-1 C2	100		10
10	6	6H	E-1 C3	100		10
7	11	4H	W 7 CQ	710		-9
11	7	6H	E-1 CT	100		10
8	12	4H	E 5 CT	650		-7
12	8	4H	E 6 DJ	680		-8

7

♠AQ97632
 ♠83
 ♠65
 ♠K7

♠J5
 ♠954
 ♠AJ104
 ♠9865

♠KQJ7
 ♠KQ73
 ♠AQJ104

♠K1084
 ♠A1062
 ♠982
 ♠32

Board (7) Av: NS=-600

N-S	E-W	Contract	L	N-S	E-W	IMP
1	13	3S	S-1 H4	100		11
13	1	5C	W 5 D8	600		0
2	14	5C	W 5 H8	600		0
14	2	6C	W 6 SA	1370		-13
3	15	3Sx	N-1 HK	200		9
15	3	5D	W 6 H8	620		-1
5	9	5D	W 6 SA	620		-1
9	5	5D	W 6 D6	620		-1
6	10	5C	E 5 SK	600		0
10	6	4C	E 6 S8	170		10
7	11	5C	E 5 SK	600		0
11	7	6C	E 6 S4	1370		-13
8	12	5C	E 6 S8	620		-1
12	8	5C	W 5 D6	600		0

8

♠8742
 ♠6
 ♠J654
 ♠A952

♠93
 ♠AK1082
 ♠KQ3
 ♠K63

♠AK6
 ♠743
 ♠10982
 ♠J107

♠QJ105
 ♠QJ95
 ♠A7
 ♠Q84

Board (8) Av: NS=+10

N-S	E-W	Contract	L	N-S	E-W	IMP
1	13	2H	W-1 S3	50		1
13	1	1NT	W-1 S8	50		1
2	14	2NT	W-1 S2	50		1
14	2	3H	W-1 D5	50		1
3	15	2H	W 2 D4		110	-3
15	3	2NT	W-1 S7	50		1
5	9	2H	W-2 S7	100		3
9	5	4H	W-3 S8	150		4
6	10	2S	N-2 S6		100	-3
10	6	3NT	W-2 C2	100		3
7	11	1NT	E 3 S2	150		-4
11	7	2S	N-1 SA	50		-2
8	12	2H	W-1 S4	50		1
12	8	1NT	W 1 S7		90	-3

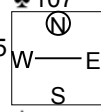
9

♠632
♥842
♦76532
♣107

♠AQ
♥KQ1075
♦AK
♣KQ32

♠J85
♥A963
♦J108
♣J84

♠K10974
♥J
♦Q94
♣A965



Board (9) Av: NS=-870

N-S	E-W	Contract	L	N-S	E-W	IMP
1	13	2H	W 6 S2		230	12
13	1	6H	E 6 CA	1430		-11
2	14	4H	W 6 CT		680	5
14	2	6H	E 6 CA	1430		-11
3	15	6H	E 6 ST	1430		-11
15	3	3NT	E 5 HJ		660	5
5	9	4H	E 6 HJ		680	5
9	5	4H	E 6 D4		680	5
6	10	6H	E 6 D4	1430		-11
10	6	3NT	W 6 D3		690	5
7	11	3NT	W 6 S6		690	5
11	7	4H	W 6 H2		680	5
8	12	4H	E 6 D4		680	5
12	8	3NT	W 6 D7		690	5

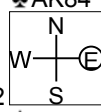
10

♠K92
♥Q432
♦87
♣AK84

♠J1054
♥7
♦Q64
♣QJ972

♠A7
♥A106
♦AKJ953
♣63

♠Q863
♥KJ985
♦102
♣105



Board (10) Av: NS=-120

N-S	E-W	Contract	L	N-S	E-W	IMP
1	13	3H	S 3 CQ	140		6
13	1	5D	W 5 CA		600	-10
2	14	3D	E 4 CT		130	0
14	2	1NT	E 2 H8		120	0
3	15	1NT	E 3 S6		150	-1
15	3	1NT	E 2 H8		120	0
5	9	1NT	E 2 H8		120	0
9	5	1NT	E 2 H8		120	0
6	10	5D	E 5 H5	600		-10
10	6	1NT	E 2 H8		120	0
7	11	3NT	E-1 H5	100		6
11	7	3H	S 3 CQ	140		6
8	12	1NT	E 2 H8		120	0
12	8	1NT	E 2 H2		120	0

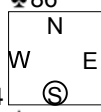
11

♠KJ1053
♥AK92
♦AQ
♣86

♠764
♥J84
♦J63
♣AQ94

♠A982
♥3
♦10974
♣KJ102

♠Q
♥Q10765
♦K852
♣753



Board (11) Av: NS=+420

N-S	E-W	Contract	L	N-S	E-W	IMP
1	13	2H	S 4 S4	170		-6
13	1	4H	N 6 DT	480		2
2	14	2H	N 4 DT	170		-6
14	2	4H	N 5 DT	450		1
3	15	4H	N 4 CJ	420		0
15	3	4H	N 5 H3	450		1
5	9	4H	N 4 DT	420		0
9	5	4H	N 4 CJ	420		0
6	10	4H	N 5 DT	450		1
10	6	4H	N 5 DT	450		1
7	11	4H	N 6 H3	480		2
11	7	4H	N 6 H3	480		2
8	12	4H	S 7 H4	510		3
12	8	4H	N 4 DT	420		0

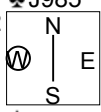
12

♠95
♥KQJ72
♦54
♣J985

♠Q76432
♥A86
♦AK3
♣2

♠AKJ
♥9
♦QJ1096
♣A764

♠108
♥10543
♦872
♣KQ103



Board (12) Av: NS=-1140

N-S	E-W	Contract	L	N-S	E-W	IMP
1	13	4S	W 7 HK		510	12
13	1	7S	W 7 HK		1510	-9
2	14	6S	W 7 HK		1010	4
14	2	6S	W 7 HQ		1010	4
3	15	7S	W 7 HK		1510	-9
15	3	6S	W 7 HK		1010	4
5	9	6S	W 7 HK		1010	4
9	5	6S	W 7 HK		1010	4
6	10	7S	W 7 C8		1510	-9
10	6	6S	W 7 C8		1010	4
7	11	5D	E 7 CK		440	12
11	7	7S	W 7 HK		1510	-9
8	12	6S	W 7 HK		1010	4
12	8	7S	W 7 HK		1510	-9

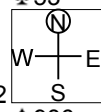
13

♠QJ
♥842
♦KJ8642
♣53

♠542
♥A10
♦A53
♣AQ872

♠AK1073
♥KJ6
♦Q107
♣J4

♠986
♥Q9753
♦9
♣K1096



Board (13) Av: NS=-650

N-S	E-W	Contract	L	N-S	E-W	IMP
1	13	4S	E 4 D9		620	1
13	1	4S	E 5 D9		650	0
2	14	4S	E 6 D9		680	-1
14	2	6S	E 6 D9	1430		-13
3	15	4S	E 6 D9		680	-1
15	3	3NT	E 4 H4		630	1
5	9	3NT	E 4 H5		630	1
9	5	4S	E 5 D7		650	0
6	10	3NT	E 5 H5		660	0
10	6	4S	E 4 D9		620	1
7	11	4S	E 6 D9		680	-1
11	7	4S	E 5 D9		650	0
8	12	4S	E 5 D9		650	0
12	8	3NT	E 5 H5		660	0

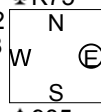
14

♠J
♥7
♦AJ765432
♣K75

♠10762
♥AKQ8
♦KQ10
♣QJ

♠AKQ43
♥J53
♦8
♣10642

♠985
♥109642
♦9
♣A983



Board (14) Av: NS=-130

N-S	E-W	Contract	L	N-S	E-W	IMP
1	13	5Dx	N-3 SA		500	-9
13	1	5S	E-1 D9	50		5
2	14	4S	E-1 D9	50		5
14	2	4S	E-1 D9	50		5
3	15	5Dx	N-2 SK		300	-5
15	3	5Dx	N-3 SK		500	-9
5	9	5Sx	E-2 D9	300		10
9	5	4S	E-1 D9	50		5
6	10	4S	E 4 DQ		420	-7
10	6	4S	E-1 D9	50		5
7	11	4H	W-1 S9	50		5
11	7	5S	E-2 D9	100		6
8	12	4S	E 4 D9		420	-7
12	8	4Dx	N-2 SA		300	-5

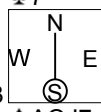
15

♠109532
♥KJ103
♦732
♣7

♠K64
♥Q98
♦QJ5
♣10543

♠8
♥7654
♦K1098
♣AKJ6

♠AQJ7
♥A2
♦A64
♣Q982



Board (15) Av: NS=+160

N-S	E-W	Contract	L	N-S	E-W	IMP
1	13	5Cx	E-4 SA	800		12
13	1	4S	S-1 DQ		100	-6
2	14	3S	S 3 C4	140		-1
14	2	3S	S 3 C4	140		-1
3	15	2S	S 3 C4	140		-1
15	3	4S	S-1 C3		100	-6
5	9	4S	S-1 DQ		100	-6
9	5	3S	S 3 DQ	140		-1
6	10	4S	S-1 DQ		100	-6
10	6	4S	S 4 C5	620		10
7	11	4S	S 5 S4	650		10
11	7	2Cx	W-1 C7	100		-2
8	12	2S	N 3 C4	140		-1
12	8	2S	N 4 CA	170		0

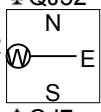
16

♠42
♥AKQ
♦AQ65
♣QJ52

♠K953
♥J97642
♦8
♣K7

♠A1086
♥10853
♦J973
♣10

♠QJ7
♥
♦K1042
♣A98643



Board (16) Av: NS=+140

N-S	E-W	Contract	L	N-S	E-W	IMP
1	13	5C	N-1 SA		50	-5
13	1	6C	S-2 S5		100	-6
2	14	5D	N-1 H5		50	-5
14	2	6D	N-3 SA		150	-7
3	15	5C	N-1 SA		50	-5
15	3	3NT	S 6 H6	490		8
5	9	7C	S-3 S3		150	-7
9	5	3NT	N 3 S6	400		6
6	10	5C	S-1 S5		50	-5
10	6	3NT	S 3 S3	400		6
7	11	5D	N 6 CT	420		7
11	7	3NT	N 6 D3	490		8
8	12	5C	N-1 SA		50	-5
12	8	6C	N 6 H6	920		13

17

♠986
♥AJ93
♦K2
♣K532

♠AKQ
♥Q1082
♦Q83
♣AQ10

♠1032
♥764
♦A10976
♣84

♠J754
♥K5
♦J54
♣J976

Board (17) Av: NS=-40

N-S	E-W	Contract	L	N-S	E-W	IMP
1	13	1NT W 2	H3		120	-2
13	1	1NT W 2	S9		120	-2
2	14	3NT W-2	C2	100		4
14	2	2NT W 3	H3		150	-3
3	15	1NT W 2	C3		120	-2
15	3	3NT W-2	S9	100		4
5	9	2NT W-1	S9	50		3
9	5	3NT W-1	H3	50		3
6	10	3NT W 3	S9		400	-8
10	6	3D E-1	C7	50		3
7	11	1H W 2	S8		110	-2
11	7	1C W 1	C2		70	-1
8	12	3NT W-2	S8	100		4
12	8	1NT W 3	S9		150	-3

18

♠54
♥A963
♦AKJ94
♣75

♠Q10
♥QJ
♦Q6532
♣K986

♠A862
♥10875
♦7
♣A432

♠KJ973
♥K42
♦108
♣QJ10

Board (18) Av: NS=-20

N-S	E-W	Contract	L	N-S	E-W	IMP
1	13	3C W-1	DA		50	
13	1	2C E 2	CQ		90	-2
2	14	2Cx E 2	DT		180	-4
14	2	3D N 3	H7	110		4
3	15	2NT N 2	H6	120		4
15	3	1NT N-1	C2		100	-2
5	9	2H E-3	CQ	150		5
9	5	1NT N 2	H5	120		4
6	10	1NT N-1	H5		100	-2
10	6	2NT N-1	H8		100	-2
7	11	2S S-1	HQ		100	-2
11	7	3D N-1	SA		100	-2
8	12	2NT S-2	HQ		200	-5
12	8	1NT N 2	H5	120		4

19

♠32
♥Q973
♦AK32
♣A106

♠86
♥KJ652
♦J765
♣K7

♠AQJ10975
♥8
♦1084
♣Q9

♠K4
♥A104
♦Q9
♣J85432

Board (19) Av: NS=+30

N-S	E-W	Contract	L	N-S	E-W	IMP
1	13	3NT N-3	S9		150	-5
13	1	3Sx E-1	DQ	200		5
2	14	3S E 3	DQ		140	-5
14	2	2S E-1	DQ	100		2
3	15	3S E-1	C5	100		2
15	3	3NT N 5	H8	460		10
5	9	3C S 3	S8	110		2
9	5	4C S 4	S8	130		3
6	10	5D N-4	H8		200	-6
10	6	3NT S-3	S8		150	-5
7	11	4C S 4	S8	130		3
11	7	2NT S-2	S8		100	-4
8	12	3H S-1	D4		50	-2
12	8	3S E-2	DQ	200		5

20

♠A873
♥A853
♦952
♣Q7

♠J
♥1064
♦AQ43
♣J8632

♠KQ10642
♥J9
♦K7
♣K95

♠95
♥KQ72
♦J1086
♣A104

Board (20) Av: NS=-100

N-S	E-W	Contract	L	N-S	E-W	IMP
1	13	2NT N-2	S6		200	-3
13	1	2S E 3	DJ		140	-1
2	14	2S E 2	DJ		110	0
14	2	2S E 2	DT		110	0
3	15	3H N-1	SK		100	0
15	3	2S E 2	DJ		110	0
5	9	2S E 2	DJ		110	0
9	5	2S E 2	DJ		110	0
6	10	2S E 2	DJ		110	0
10	6	2S E 3	DJ		140	-1
7	11	2S E 2	DJ		110	0
11	7	1S E 2	DJ		110	0
8	12	3H N 3	C5	140		6
12	8	2H N 2	SK	110		5