

1

♠KJ10
♥AQ92
♦7
♣J10875

♠A32
♥J86
♦KQ64
♣A63

♠Q75
♥1054
♦10532
♣K42

♠9864
♥K73
♦AJ98
♣Q9

Board (1) Av: NS=+110

N-S	E-W	Contract	L	N-S	E-W	IMP
1	12	2H N 3 H4	140			1
12	1	1NT W-1 CJ	50			-2
2	11	2Dx E-2 CQ	300			5
11	2	1NT S 3 D4	150			1
3	10	2D E-2 CQ	100			0
10	3	3C N 3 S3	110			0
4	9	2S S 2 DK	110			0
9	4	3C N 3 H4	110			0
6	15	2S S-1 H2		50		-4
15	6	3C N 3 D3	110			0
7	14	2H N 3 S5	140			1
14	7	2NT S 2 H8	120			0
8	13	2H N 4 SQ	170			-2
13	8	3NT S-1 DQ		50		-4

2

♠97542
♥63
♦K754
♣J5

♠A1063
♥8742
♦Q10
♣AQ3

♠K
♥KQJ1095
♦J32
♣K109

♠QJ8
♥A
♦A986
♣87642

Board (2) Av: NS=-430

N-S	E-W	Contract	L	N-S	E-W	IMP
1	12	4H E 4 SQ	420			0
12	1	4H E 4 HA	420			0
2	11	4H E 4 C2	420			0
11	2	4H E 4 SQ	420			0
3	10	4H E 5 C2	450			-1
10	3	4H E 5 SQ	450			-1
4	9	4H E 5 C7	450			-1
9	4	4H E 4 C8	420			0
6	15	4H E 4 C8	420			0
15	6	4H E 4 SQ	420			0
7	14	4H E 5 C6	450			-1
14	7	4H E 4 C2	420			0
8	13	4H E 4 SQ	420			0
13	8	4H E 5 C2	450			-1

3

♠1054
♥Q10873
♦98
♣Q83

♠A982
♥9642
♦J104
♣42

♠QJ76
♥A5
♦A5
♣AKJ109

♠K3
♥KJ
♦KQ7632
♣765

Board (3) Av: NS=-510

N-S	E-W	Contract	L	N-S	E-W	IMP
1	12	2S W 4 D9	170			8
12	1	1NT E 5 D6	210			7
2	11	4S W 5 D9	650			-4
11	2	3S W 4 D9	170			8
3	10	4S W 4 D9	620			-3
10	3	4S W 5 D9	650			-4
4	9	4S W 4 D9	620			-3
9	4	4S W 5 D9	650			-4
6	15	4S W 4 D9	620			-3
15	6	4S E 4 D9	620			-3
7	14	4S W 4 D9	620			-3
14	7	3S W 5 D9	200			7
8	13	4S W 4 D9	620			-3
13	8	2Dx S-3 C4		500		0

4

♠A1065
♥KQ10742
♦76
♣10

♠Q9
♥AJ8653
♦AQ103
♣2

♠J843
♥K42
♦QJ9543

♠K72
♥9
♦J985
♣AK876

Board (4) Av: NS=+200

N-S	E-W	Contract	L	N-S	E-W	IMP
1	12	2H W-4 CT	400			5
12	1	2D W-2 CT	200			0
2	11	2D W-3 CT	300			3
11	2	2D W-3 CT	300			3
3	10	2D E-2 CT	200			0
10	3	2H W-3 CT	300			3
4	9	2D W-1 D6	100			-3
9	4	2D W 2 CT		90		-7
6	15	2D W-2 CT	200			0
15	6	2H W-3 CT	300			3
7	14	2D W 2 CT		90		-7
14	7	2D W-1 D6	100			-3
8	13	4H W-5 D7	500			7
13	8	2D W-1 CT	100			-3

5

♠QJ863
♥65
♦10654
♣72

♠1072
♥AQ32
♦AJ9
♣A106

♠94
♥KJ1087
♦KQ8
♣985

♠AK5
♥94
♦732
♣KQJ43

Board (5) Av: NS=+10

N-S	E-W	Contract	L	N-S	E-W	IMP
1	12	2S N-1 S9		100		-3
12	1	4H W-1 SQ	50			1
2	11	4H W-1 C7	50			1
11	2	4H E-1 SA	50			1
3	10	2H E 3 CK		140		-4
10	3	3H E 3 SA		140		-4
4	9	4H W-1 C7	50			1
9	4	4H E-1 CK	50			1
6	15	4H E-1 CK	50			1
15	6	3NT W-1 SQ	50			1
7	14	4H W-1 SJ	50			1
14	7	4H W-1 SJ	50			1
8	13	3H W 3 C7		140		-4
13	8	3NT W-1 S3	50			1

6

♠75
♥K10643
♦94
♣AK95

♠K83
♥87
♦Q3
♣QJ10842

♠A1062
♥AQ9
♦J10752
♣7

♠QJ94
♥J52
♦AK86
♣63

Board (6) Av: NS=+50

N-S	E-W	Contract	L	N-S	E-W	IMP
1	12	1NT N 1 D5	90			1
12	1	3C W-2 S6	200			4
2	11	3H N-1 C7		50		-3
11	2	1NT W-3 H4	300			6
3	10	3S W-2 CA	200			4
10	3	3H N-1 C7		50		-3
4	9	3H N-1 C7	50			-3
9	4	3H N-1 C7	50			-3
6	15	3Cx W-2 S7	500			10
15	6	1NT W-2 H4	200			4
7	14	4H N-2 C7		100		-4
14	7	3H N-1 C7	50			-3
8	13	3NT E 3 SQ	600			-12
13	8	3H N-1 C7	50			-3

7

♠J7
♥KJ974
♦Q2
♣A984

♠AK43
♥Q1065
♦A54
♣102

♠952
♥8
♦KJ93
♣KQ653

♠Q1086
♥A32
♦10876
♣J7

Board (7) Av: NS=+50

N-S	E-W	Contract	L	N-S	E-W	IMP
1	12	3D W-1 H4	100			2
12	1	3NT W-3 C4	300			6
2	11	1NT W 2 H7		120		-5
11	2	3C W-2 SJ	200			4
3	10	1NT W 1 H3		90		-4
10	3	3D W-1 H9	100			2
4	9	2S W-1 H4	100			2
9	4	2S W 4 H7		170		-6
6	15	2S W 3 DQ		140		-5
15	6	3D W-1 H3	100			2
7	14	3D W 3 SJ		110		-4
14	7	3C W-1 H3	100			2
8	13	3S W-1 H4	100			2
13	8	3C E-2 HA	200			4

8

♠KQ654
♥Q43
♦KJ62
♣4

♠J73
♥82
♦Q103
♣AKQJ6

♠A82
♥J1065
♦874
♣872

♠109
♥AK97
♦A95
♣10953

Board (8) Av: NS=+140

N-S	E-W	Contract	L	N-S	E-W	IMP
1	12	2S N 5 HJ	200			2
12	1	3C W-2 SK	100			-1
2	11	3S N 5 H5	200			2
11	2	3S N 5 C8	200			2
3	10	3S N 6 HJ	230			3
10	3	1NT S-1 CK		50		-5
4	9	1NT S 1 CK	90			-2
9	4	INT S 1 CJ	90			-2
6	15	4S N 5 HJ	450			7
15	6	4H N-1 C2		50		-5
7	14	4S S 5 CA	450			7
14	7	2S N 2 C3	110			-1
8	13	3C W-3 D6	150			0
13	8	3NTxS-2 CJ		300		-10

9

♠972
 ♥Q1087
 ♦Q109
 ♣Q85

♠KQJ4
 ♥K96
 ♦5
 ♣AKJ104

♠A1083
 ♥
 ♦KJ8763
 ♣962

♠65
 ♥AJ5432
 ♦A42
 ♣73

Board (9) Av: NS=-440

N-S	E-W	Contract	L	N-S	E-W	IMP
1	12	5C	W 5 H8		600	-4
12	1	6S	W-1 H7	100		11
2	11	5S	E 5 C7		650	-5
11	2	5C	W-1 S7	100		11
3	10	4S	W 4 H8		620	-5
10	3	4S	E 4 C7		620	-5
4	9	4S	W 4 H8		620	-5
9	4	4S	W 4 H7		620	-5
6	15	4S	E 5 HA		650	-5
15	6	5S	W-1 H8	100		11
7	14	4S	E 4 C7		620	-5
14	7	4S	E 4 HA		620	-5
8	13	4S	W-1 H8	100		11
13	8	4S	W 5 H7		650	-5

10

♠KQ653
 ♥A62
 ♦AK97
 ♣J

♠109
 ♥QJ
 ♦Q863
 ♣109872

♠A72
 ♥1074
 ♦J52
 ♣KQ43

♠J84
 ♥K9853
 ♦104
 ♣A65

Board (10) Av: NS=+640

N-S	E-W	Contract	L	N-S	E-W	IMP
1	12	4S	N 5 CK		650	0
12	1	4S	N 5 CK		650	0
2	11	6S	N-1 CK		100	-12
11	2	4S	N 4 CK		620	-1
3	10	4S	N 5 CK		650	0
10	3	4S	N 5 S2		650	0
4	9	4S	N 5 H7		650	0
9	4	4S	N 5 H7		650	0
6	15	4S	N 5 CK		650	0
15	6	4S	N 5 CK		650	0
7	14	4S	N 5 CK		650	0
14	7	4S	N 4 C3		620	-1
8	13	4S	N 5 CK		650	0
13	8	4S	N 4 CQ		620	-1

11

♠J8
 ♥106
 ♦7652
 ♣AQ972

♠73
 ♥KJ73
 ♦J3
 ♣J8543

♠AK1054
 ♥984
 ♦A1084
 ♣10

♠Q962
 ♥AQ52
 ♦KQ9
 ♣K6

Board (11) Av: NS=-40

N-S	E-W	Contract	L	N-S	E-W	IMP
1	12	2C	S-1 S7		50	0
12	1	2S	E 2 DK		110	-2
2	11	3H	S-4 S7		200	-4
11	2	3NT	S-3 S7		150	-3
3	10	3C	S-3 S7		150	-3
10	3	1NT	S 2 C4	120		4
4	9	3NT	S-1 S7		50	0
9	4	2NT	S-1 S7		50	0
6	15	3NT	S-1 S8		50	0
15	6	4Hx	W-5 SJ	1100		15
7	14	2S	E 3 CK		140	-3
14	7	3NT	S-3 C5		150	-3
8	13	3NT	S 4 S7	430		10
13	8	3C	N-2 SA		100	-2

12

♠AKQ7432
 ♥9
 ♦K73
 ♣J3

♠KQJ108754
 ♥A10
 ♦A10
 ♣Q54

♠J1065
 ♥63
 ♦J642
 ♣1062

♠98
 ♥A2
 ♦Q985
 ♣AK987

Board (12) Av: NS=+440

N-S	E-W	Contract	L	N-S	E-W	IMP
1	12	4S	N 5 H6		650	5
12	1	7Hx	W-4 H9		800	8
2	11	5Hx	W-2 SA		300	-4
11	2	4S	N 5 H6		650	5
3	10	5Hx	W-2 SA		300	-4
10	3	5S	N 5 H3		650	5
4	9	5Hx	W-3 SA		500	2
9	4	5Hx	W-2 SA		300	-4
6	15	6S	N-1 H6		100	-11
15	6	5Sx	N 5 H6		850	9
7	14	5S	N 5 H6		650	5
14	7	5H	W-2 SK		100	-8
8	13	5Hx	W-3 SA		500	2
13	8	6S	N-2 H6		200	-12

13

♠9
 ♥632
 ♦KQJ1093
 ♣KQ8

♠AK104
 ♥J8
 ♦A8752
 ♣J2

♠QJ632
 ♥AQ9754
 ♦4
 ♣7

♠875
 ♥K10
 ♦6
 ♣A1096543

Board (13) Av: NS=-620

N-S	E-W	Contract	L	N-S	E-W	IMP
1	12	4S	E 6 D6		680	-2
12	1	4S	W 5 CK		650	-1
2	11	4S	W 5 DK		650	-1
11	2	4S	W 5 DK		650	-1
3	10	5Cx	S-1 SK		200	9
10	3	4S	W 5 DK		650	-1
4	9	4S	W 5 DK		650	-1
9	4	5Cx	S-1 SK		200	9
6	15	5S	W 5 CK		650	-1
15	6	5Sx	W 5 DK		850	-6
7	14	4S	E 5 CA		650	-1
14	7	4S	W 5 DQ		650	-1
8	13	5S	W 5 CK		650	-1
13	8	4S	W 5 DK		650	-1

14

♠7
 ♥J9742
 ♦AQ762
 ♣AK

♠Q9
 ♥Q8
 ♦K1098
 ♣98542

♠A1064
 ♥K105
 ♦3
 ♣QJ1063

♠KJ8532
 ♥A63
 ♦J54
 ♣7

Board (14) Av: NS=+60

N-S	E-W	Contract	L	N-S	E-W	IMP
1	12	2S	N 4 CQ		170	3
12	1	3C	E-1 D5		50	0
2	11	4H	N-1 D3		50	-3
11	2	4H	S-2 C9		100	-4
3	10	4Cx	E-2 C7		300	6
10	3	2S	N 2 CQ		110	2
4	9	2S	S 2 DT		110	2
9	4	2S	S-1 C5		50	-3
6	15	3S	S-1 C2		50	-3
15	6	2S	S 3 C2		140	2
7	14	3S	N-2 D5		100	-4
14	7	2S	S 2 HQ		110	2
8	13	4H	S 4 CQ		420	8
13	8	4D	S-1 C2		50	-3

15

♠QJ85
 ♥Q5
 ♦AQJ4
 ♣Q62

♠A943
 ♥8643
 ♦83
 ♣KJ4

♠6
 ♥KJ107
 ♦72
 ♣A98753

♠K1072
 ♥A92
 ♦K10965
 ♣10

Board (15) Av: NS=+190

N-S	E-W	Contract	L	N-S	E-W	IMP
1	12	4S	N 4 CA		620	10
12	1	4S	N 4 CA		620	10
2	11	4S	N-1 D8		100	-7
11	2	2D	N 4 S6		130	-2
3	10	4S	S-1 H4		100	-7
10	3	4S	N 4 CA		620	10
4	9	4C	E-1 D9		50	-4
9	4	4D	N-2 S6		200	-9
6	15	4S	S-1 D8		100	-7
15	6	5Hx	E-1 H5		100	-3
7	14	4S	N 5 CA		650	10
14	7	3D	N-1 S6		100	-7
8	13	4S	N 5 D7		650	10
13	8	4S	S-1 CK		100	-7

16

♠AK974
 ♥1073
 ♦J8
 ♣A74

♠3
 ♥A85
 ♦KQ652
 ♣KQ52

♠Q108
 ♥KQJ9
 ♦109
 ♣10986

♠J652
 ♥642
 ♦A743
 ♣J3

Board (16) Av: NS=-40

N-S	E-W	Contract	L	N-S	E-W	IMP
1	12	3S	N-2 HK		100	-2
12	1	2C	W 3 SK		110	-2
2	11	4H	W-1 SK		100	4
11	2	4C	W-1 SA		100	4
3	10	4C	E-1 S5		100	4
10	3	5C	W-1 SA		100	4
4	9	3S	N-2 HK		100	-2
9	4	3Sx	N-2 HK		300	-6
6	15	3C	E 3 S2		110	-2
15	6	4C	E 4 S3		130	-3
7	14	3S	S-2 DK		100	-2
14	7	3S	N-2 HK		100	-2
8	13	5C	W-2 SA		200	6
13	8	3S	N-2 HK		100	-2

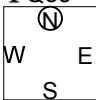
17

♠AQ95
♥1095
♦762
♣Q83

♠108632
♥2
♦A8
♣A9654

♠J7
♥AKQ84
♦J93
♣K72

♠K4
♥J763
♦KQ1054
♣J10



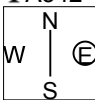
18

♠QJ5
♥A764
♦QJ
♣A542

♠A76
♥KJ
♦A8753
♣KJ9

♠1098
♥10852
♦K1096
♣Q6

♠K432
♥Q93
♦42
♣10873



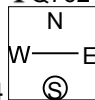
19

♠AJ632
♥J876
♦Q762
♣Q762

♠KJ97
♥85
♦K103
♣10954

♠8532
♥Q7
♦A952
♣AKJ

♠AQ1064
♥K1094
♦Q4
♣83



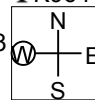
20

♠A753
♥K7
♦Q87
♣K964

♠K8
♥J10843
♦K10
♣J873

♠QJ1064
♥Q95
♦6532
♣10

♠92
♥A62
♦AJ94
♣AQ52



Board (17) Av: NS=-60

N-S	E-W	Contract	L	N-S	E-W	IMP
1	12	1NT	E-2 DQ	100		4
12	1	2S	W-1 D7	50		3
2	11	2H	E-1 DK	50		3
11	2	3D	S-2 H2		100	-1
3	10	2S	W-1 HT	50		3
10	3	2D	S-2 H2		100	-1
4	9	3H	E-1 DK	50		3
9	4	2NT	E 4 DK		180	-3
6	15	2S	W 2 C3		110	-2
15	6	2S	E 2 C3		110	-2
7	14	2D	N-1 HA		50	0
14	7	1NT	E 5 D5		210	-4
8	13	2D	S-3 H2		150	-3
13	8	3D	S-3 H2		150	-3

Board (18) Av: NS=-130

N-S	E-W	Contract	L	N-S	E-W	IMP
1	12	1NT	W 1 SQ		90	1
12	1	1NT	W 2 H4		120	0
2	11	2D	W 3 SQ		110	1
11	2	1NT	W 3 C2		150	-1
3	10	1NT	W 2 SQ		120	0
10	3	1NT	W 3 H4		150	-1
4	9	1NT	W 2 H4		120	0
9	4	1NT	W 3 H4		150	-1
6	15	1NT	W 2 SQ		120	0
15	6	1NT	W 2 H4		120	0
7	14	1NT	W 4 H4		180	-2
14	7	1NT	W 1 SQ		90	1
8	13	3D	W 3 SQ		110	1
13	8	1NT	W 3 DQ		150	-1

Board (19) Av: NS=-20

N-S	E-W	Contract	L	N-S	E-W	IMP
1	12	4H	S-1 H8		50	-1
12	1	4H	S-1 H8		50	-1
2	11	4H	S-1 H8		50	-1
11	2	4H	S-1 CT		50	-1
3	10	3H	S 3 H5	140		4
10	3	4H	S-1 H5		50	-1
4	9	3H	S-1 H8		50	-1
9	4	4H	S-1 CT		50	-1
6	15	4H	S-1 H5		50	-1
15	6	4H	S-1 H2		50	-1
7	14	3H	N 3 CA	140		4
14	7	4H	S-1 H8		50	-1
8	13	4H	S-1 CT		50	-1
13	8	3H	N 3 CA	140		4

Board (20) Av: NS=+560

N-S	E-W	Contract	L	N-S	E-W	IMP
1	12	5C	S-1 SK		100	-12
12	1	3NT	N 4 SQ	630		2
2	11	3NT	N 3 SQ	600		1
11	2	3NT	N 4 SQ	630		2
3	10	3NT	N 3 SQ	600		1
10	3	3NT	N 4 SQ	630		2
4	9	3NT	N 3 SQ	600		1
9	4	3NT	N 4 SQ	630		2
6	15	3NT	N 4 SQ	630		2
15	6	4S	N-2 H5		200	-13
7	14	3NT	S 4 H4	630		2
14	7	3NT	N 4 SQ	630		2
8	13	3NT	S 3 HJ	600		1
13	8	3NT	N 4 S6	630		2