

1

♠KJ10
♥AQ92
♦7
♣J10875

♠A32 ♠Q75
♥J86 ♥1054
♦KQ64 ♦10532
♣A63 ♣K42

♠9864
♥K73
♦AJ98
♣Q9

Board (1) Av: NS=+110

N-S	E-W	Contract	L	N-S	E-W	IMP
1	12	2NT S-2	HJ		100	-5
12	1	1NT N-2	H5	120		0
2	11	1NT W-2	CJ	100		0
11	2	1NT N-2	D2	120		0
3	10	2S S-3	S2	140		1
10	3	2NT S-2	H6	120		0
4	9	2S S-3	H6	140		1
9	4	2S S-3	DQ	140		1
6	15	3NT N-2	C2	100		-5
15	6	3Dx E-3	CQ	500		9
7	14	2C N-2	D3	90		-1
14	7	2C N-2	D2	90		-1
8	13	1NTxw-2	C7	300		5
13	8	1NT W-2	CJ	100		0

2

♠97542
♥63
♦K754
♣J5

♠A1063 ♠K
♥8742 ♥KQJ1095
♦Q10 ♦J32
♣AQ3 ♣K109

♠QJ8
♥A
♦A986
♣87642

Board (2) Av: NS=-440

N-S	E-W	Contract	L	N-S	E-W	IMP
1	12	4H E-4	C2		420	1
12	1	4H E-4	C2		420	1
2	11	4H E-4	SQ		420	1
11	2	4H E-5	SQ		450	0
3	10	4H E-5	C8		450	0
10	3	4H E-5	SQ		450	0
4	9	4H E-5	SQ		450	0
9	4	4H E-5	SQ		450	0
6	15	4H E-4	SQ		420	1
15	6	4H E-4	SQ		420	1
7	14	4H W-4	SQ		420	1
14	7	4H E-5	C2		450	0
8	13	4H E-5	C2		450	0
13	8	4H E-5	SQ		450	0

3

♠1054
♥Q10873
♦98
♣Q83

♠A982 ♠QJ76
♥9642 ♥A5
♦J104 ♦A5
♣42 ♣AKJ109

♠K3
♥KJ
♦KQ7632
♣765

Board (3) Av: NS=-530

N-S	E-W	Contract	L	N-S	E-W	IMP
1	12	2S W-5	D9		200	8
12	1	4S W-6	D9		680	-4
2	11	4S W-5	D9		650	-3
11	2	4S W-4	H3		620	-3
3	10	4S W-4	D9		620	-3
10	3	4S W-5	D9		650	-3
4	9	4S W-1	D9	100		12
9	4	2S W-5	D9		200	8
6	15	2S W-5	D9		200	8
15	6	4S W-4	D9		620	-3
7	14	3NT E-5	D6		660	-4
14	7	4S W-4	H3		620	-3
8	13	4S W-5	D9		650	-3
13	8	4S W-5	C3		650	-3

4

♠A1065
♥KQ10742
♦76
♣10

♠Q9 ♠J843
♥AJ8653 ♥K42
♦AQ103 ♦K42
♣2 ♣QJ9543

♠K72
♥9
♦J985
♣AK876

Board (4) Av: NS=+250

N-S	E-W	Contract	L	N-S	E-W	IMP
1	12	2D W-2	D7		200	-2
12	1	2H W-2	CT		200	-2
2	11	2H W-2	CT		200	-2
11	2	2H W-3	CT		300	2
3	10	2D W-1	CT		100	-4
10	3	2H W-3	CT		300	2
4	9	2D W-2	CT		200	-2
9	4	2D W-3	CT		300	2
6	15	2H W-2	CT		200	-2
15	6	2D W-2	CT		200	-2
7	14	2D W-3	D7		300	2
14	7	2D W-2	D6	90		-8
8	13	3Dx W-2	D7		500	6
13	8	2Cx E-2	H9		500	6

5

♠QJ863
♥65
♦10654
♣72

♠1072 ♠94
♥AQ32 ♥KJ1087
♦AJ9 ♦KQ8
♣A106 ♣985

♠AK5
♥94
♦732
♣KQJ43

Board (5) Av: NS=+10

N-S	E-W	Contract	L	N-S	E-W	IMP
1	12	2S N-1	C5		100	-3
12	1	4H E-1	SA	50		1
2	11	2H E-3	SK		140	-4
11	2	4H W-1	C7	50		1
3	10	4H W-1	C7	50		1
10	3	2NT W-3	S6		150	-4
4	9	4H E-1	CK	50		1
9	4	2H E-3	CK		140	-4
6	15	4H W-1	SQ	50		1
15	6	4H E-1	CK	50		1
7	14	4H W-1	C7	50		1
14	7	4H W-1	C7	50		1
8	13	4H E-1	SQ	50		1
13	8	4H E-1	CK	50		1

6

♠75
♥K10643
♦94
♣AK95

♠K83 ♠A1062
♥87 ♥AQ9
♦Q3 ♦J10752
♣QJ10842 ♣7

♠QJ94
♥J52
♦AK86
♣63

Board (6) Av: NS=+30

N-S	E-W	Contract	L	N-S	E-W	IMP
1	12	1NT W-1	H4		100	2
12	1	1NT W-1	H3		100	2
2	11	2H N-1	C7		50	-2
11	2	2H N-1	C7		50	-2
3	10	1NT W-1	H4		100	2
10	3	3H S-1	C7		50	-2
4	9	1NT W-2	H4		200	5
9	4	3H N-1	C7		50	-2
6	15	1NT W-1	H4		100	2
15	6	2H N-2	DJ		110	2
7	14	3D E-2	SQ		200	5
14	7	3H N-1	C7		50	-2
8	13	3H N-1	C7		50	-2
13	8	4Hx N-2	C7		300	-8

7

♠J7
♥KJ974
♦Q2
♣A984

♠AK43 ♠952
♥Q1065 ♥8
♦A54 ♦KJ93
♣102 ♣KQ653

♠Q1086
♥A32
♦10876
♣J7

Board (7) Av: NS=+20

N-S	E-W	Contract	L	N-S	E-W	IMP
1	12	3D W-3	H4		110	-4
12	1	3NT W-1	H4		100	2
2	11	3NT W-2	SJ		200	5
11	2	3H N-2	D9		200	-6
3	10	3C E-3	D8		110	-4
10	3	3D W-2	H4		200	5
4	9	3NT W-2	SJ		200	5
9	4	2H N-1	CK		100	-3
6	15	2H N-1	DK		100	-3
15	6	3D W-3	DJ		110	-4
7	14	3C W-1	SJ		100	2
14	7	3NT W-1	H7		100	2
8	13	5D W-3	H4		300	7
13	8	2S E-2	D6		110	-4

8

♠KQ654
♥Q43
♦KJ62
♣4

♠J73 ♠A82
♥82 ♥J1065
♦Q103 ♦874
♣AKQJ6 ♣872

♠109
♥AK97
♦A95
♣10953

Board (8) Av: NS=+30

N-S	E-W	Contract	L	N-S	E-W	IMP
1	12	1NT S-1	D3		50	-2
12	1	1NT W-1	S4		90	-3
2	11	3D N-5	C7		150	3
11	2	1NT S-1	CA		90	2
3	10	1NT W-1	S5		90	-3
10	3	2S N-4	S2		170	4
4	9	2S N-1	C2		50	-2
9	4	1NT S-1	CA		90	2
6	15	3NT S-2	CA		100	-4
15	6	2S N-4	C7		170	4
7	14	3C W-3	C4		150	3
14	7	2NT S-1	CJ		50	-2
8	13	2S N-3	C2		140	3
13	8	3NTxS-2	CA		300	-8

9

♠972
 ♥Q1087
 ♦Q109
 ♣Q85

♠KQJ4
 ♥K96
 ♦5
 ♣AKJ104

♠A1083
 ♥
 ♦KJ8763
 ♣962

♠65
 ♥AJ5432
 ♦A42
 ♣73

Board (9) Av: NS=-520

N-S	E-W	Contract	L	N-S	E-W	IMP
1	12 4S	W 5 H8			650	-4
12	1 4S	W 4 H8			620	-3
2	11 4S	E 5 HA			650	-4
11	2 3NT	W-2 HQ	200			12
3	10 6S	E 6 HA		1430		-14
10	3 4S	W 4 S2			620	-3
4	9 4S	W 5 H7			650	-4
9	4 4S	E 5 HA			650	-4
6	15 4S	W 5 H7			650	-4
15	6 3NT	W-3 H7	300			13
7	14 4S	E 5 C7			650	-4
14	7 4Hx	S-4 CK			800	-7
8	13 5C	W-1 H8	100			12
13	8 4S	W 5 H8			650	-4

10

♠KQ653
 ♥A62
 ♦AK97
 ♣J

♠109
 ♥QJ
 ♦Q863
 ♣109872

♠A72
 ♥1074
 ♦J52
 ♣KQ43

♠J84
 ♥K9853
 ♦104
 ♣A65

Board (10) Av: NS=+650

N-S	E-W	Contract	L	N-S	E-W	IMP
1	12 4S	N 5 CK			650	0
12	1 4S	N 4 CK			620	-1
2	11 4S	N 6 H7			680	1
11	2 4S	N 5 H7			650	0
3	10 6H	N-1 CT		100		-13
10	3 4S	N 5 S2			650	0
4	9 4S	N 5 H3			650	0
9	4 4S	N 5 CK			650	0
6	15 4S	N 5 S2			650	0
15	6 4S	N 6 CK			680	1
7	14 4S	N 5 H4			650	0
14	7 4S	N 5 D2			650	0
8	13 4H	S 5 D3			650	0
13	8 4S	S 5 S2			650	0

11

♠J8
 ♥106
 ♦7652
 ♣AQ972

♠73
 ♥KJ73
 ♦J3
 ♣J8543

♠AK1054
 ♥984
 ♦A1084
 ♣10

♠Q962
 ♥AQ52
 ♦KQ9
 ♣K6

Board (11) Av: NS=-40

N-S	E-W	Contract	L	N-S	E-W	IMP
1	12 2C	S-1 S7			50	0
12	1 2NT	S-1 S7			50	0
2	11 3C	N-2 SA			100	-2
11	2 2D	E-3 S6	150			5
3	10 2S	E 2 DK			110	-2
10	3 2C	S 2 S7		90		4
4	9 2S	E 2 DK			110	-2
9	4 3NT	S-1 C4			50	0
6	15 3C	N-2 SA			100	-2
15	6 3C	N-2 SA			100	-2
7	14 3H	S-3 S7			150	-3
14	7 1NT	S 1 C3	90			4
8	13 2C	S-1 C5		50		0
13	8 2S	E-1 S2		50		3

12

♠AKQ7432
 ♥9
 ♦K73
 ♣J3

♠KQJ108754
 ♥A10
 ♦A10
 ♣Q54

♠J1065
 ♥63
 ♦J642
 ♣1062

♠98
 ♥A2
 ♦Q985
 ♣AK987

Board (12) Av: NS=+250

N-S	E-W	Contract	L	N-S	E-W	IMP
1	12 5Hx	W-2 SA	300			2
12	1 5Hx	W-3 SA	500			6
2	11 5S	N 5 H6	650			9
11	2 5S	N-1 H3		100		-8
3	10 5Hx	W-2 SK	300			2
10	3 6S	N-2 H6		200		-10
4	9 5Hx	W-3 SA	500			6
9	4 4S	N 5 H6	650			9
6	15 5Hx	W-2 SK	300			2
15	6 5Hx	W-3 SK	500			6
7	14 5Hx	W-3 SK	500			6
14	7 6S	N-1 H3		100		-8
8	13 6S	N-1 H6		100		-8
13	8 6S	N-2 H6		200		-10

13

♠9
 ♥632
 ♦KQJ1093
 ♣KQ8

♠AK104
 ♥J8
 ♦A8752
 ♣J2

♠QJ632
 ♥AQ9754
 ♦4
 ♣7

♠875
 ♥K10
 ♦6
 ♣A1096543

Board (13) Av: NS=-630

N-S	E-W	Contract	L	N-S	E-W	IMP
1	12 4S	W 5 DK			650	-1
12	1 5S	W 5 CK			650	-1
2	11 4S	E 5 D6			650	-1
11	2 6Dx	N-3 HA			800	-5
3	10 4S	W 5 DK			650	-1
10	3 3NT	W-2 DK	200			13
4	9 4S	W 5 DQ			650	-1
9	4 3S	W 5 CK			200	10
6	15 4S	W 5 DK			650	-1
15	6 4H	E 5 D6			650	-1
7	14 5S	W 5 DK			650	-1
14	7 5Sx	W 5 DK			850	-6
8	13 4S	W 5 DK			650	-1
13	8 4S	W 5 DK			650	-1

14

♠7
 ♥J9742
 ♦AQ762
 ♣AK

♠Q9
 ♥Q8
 ♦K1098
 ♣98542

♠A1064
 ♥K105
 ♦3
 ♣QJ1063

♠KJ8532
 ♥A63
 ♦J54
 ♣7

Board (14) Av: NS=+80

N-S	E-W	Contract	L	N-S	E-W	IMP
1	12 2S	S 2 HQ			110	1
12	1 2S	S 2 DT			110	1
2	11 3NTxN-2	CQ		300		-9
11	2 4H	N 4 CQ			420	8
3	10 3NT	N-4 CQ		200		-7
10	3 4H	N 4 D3			420	8
4	9 2S	S 2 HQ			110	1
9	4 4H	N-1 D3			50	-4
6	15 2S	S 2 HQ			110	1
15	6 3C	E 3 S4		110		-5
7	14 2S	S 2 HQ			110	1
14	7 4H	N-1 SA			50	-4
8	13 4H	N 5 CQ			450	9
13	8 2S	S-1 HQ			50	-4

15

♠QJ85
 ♥Q5
 ♦AQJ4
 ♣Q62

♠A943
 ♥8643
 ♦83
 ♣KJ4

♠6
 ♥KJ107
 ♦72
 ♣A98753

♠K1072
 ♥A92
 ♦K10965
 ♣10

Board (15) Av: NS=+280

N-S	E-W	Contract	L	N-S	E-W	IMP
1	12 4S	N-1 D7			100	-9
12	1 2S	S 4 D8			170	-3
2	11 5Cx	E-2 S2	300			1
11	2 4S	N 4 D2			620	8
3	10 4S	N 4 HJ			620	8
10	3 4S	N 4 HT			620	8
4	9 4S	N-1 D3		100		-9
9	4 4S	S 4 H6			620	8
6	15 4S	S 4 CK			620	8
15	6 5D	N-2 CA		200		-10
7	14 2S	N 3 CA		140		-4
14	7 4S	N-1 CA			100	-9
8	13 4S	N 5 CA			650	9
13	8 4S	N-1 CA			100	-9

16

♠AK974
 ♥1073
 ♦J8
 ♣A74

♠3
 ♥A85
 ♦KQ652
 ♣KQ52

♠Q108
 ♥KQJ9
 ♦109
 ♣10986

♠J652
 ♥642
 ♦A743
 ♣J3

Board (16) Av: NS=-100

N-S	E-W	Contract	L	N-S	E-W	IMP
1	12 3S	N-2 HK			100	0
12	1 4H	E 4 S5			620	-11
2	11 4S	N-3 HK			150	-2
11	2 4S	N-3 HK			150	-2
3	10 3S	N-2 HK			100	0
10	3 4H	W-2 SA	200			7
4	9 4S	N-3 HK			150	-2
9	4 3S	N-2 HK			100	0
6	15 3C	W 4 SK			130	-1
15	6 4C	W-1 SK	100			5
7	14 5C	W-1 SK	100			5
14	7 2Sx	N-1 HK		100		0
8	13 3S	N-2 HK			100	0
13	8 3Sx	N-2 HK			300	-5

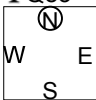
17

♠AQ95
 ♥1095
 ♦762
 ♣Q83

♠108632
 ♥2
 ♦A8
 ♣A9654

♠J7
 ♥AKQ84
 ♦J93
 ♣K72

♠K4
 ♥J763
 ♦KQ1054
 ♣J10



18

♠QJ5
 ♥A764
 ♦QJ
 ♣A542

♠A76
 ♥KJ
 ♦A8753
 ♣KJ9

♠1098
 ♥10852
 ♦K1096
 ♣Q6

♠K432
 ♥Q93
 ♦42
 ♣10873



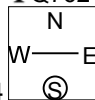
19

♠AJ632
 ♥J876
 ♦Q762
 ♣Q762

♠KJ97
 ♥85
 ♦K103
 ♣10954

♠8532
 ♥Q7
 ♦A952
 ♣AKJ

♠AQ1064
 ♥K1094
 ♦Q4
 ♣83



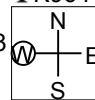
20

♠A753
 ♥K7
 ♦Q87
 ♣K964

♠K8
 ♥J10843
 ♦K10
 ♣J873

♠QJ1064
 ♥Q95
 ♦6532
 ♣10

♠92
 ♥A62
 ♦AJ94
 ♣AQ52



Board (17) Av: NS=-70

N-S	E-W	Contract	L	N-S	E-W	IMP
1	12	2S	W 3 D7		140	-2
12	1	1NT	E 2 H6		120	-2
2	11	4C	W-2 D2	100		5
11	2	1NT	E 5 D5		210	-4
3	10	3C	W 3 HT		110	-1
10	3	1NT	E-1 DQ	50		3
4	9	3NT	E-4 DK	200		7
9	4	3C	E 3 DK		110	-1
6	15	3Sx	W-1 D7	100		5
15	6	1NT	E 5 D4		210	-4
7	14	1NT	E-1 DQ	50		3
14	7	3D	S-4 H5		200	-4
8	13	2S	W 2 C3		110	-1
13	8	2S	W 2 D6		110	-1

Board (18) Av: NS=-130

N-S	E-W	Contract	L	N-S	E-W	IMP
1	12	1NT	W 4 H4		180	-2
12	1	1NT	W 3 DQ		150	-1
2	11	2D	E 4 D4		130	0
11	2	1NT	W 3 H4		150	-1
3	10	2D	E 3 S2		110	1
10	3	1NT	W-2 SQ	100		6
4	9	1NT	W 2 SQ		120	0
9	4	1NT	W 3 H4		150	-1
6	15	1NT	W 2 SQ		120	0
15	6	1NTxw	3 H4		380	-6
7	14	2D	W 2 SQ		90	1
14	7	1NT	W 2 SQ		120	0
8	13	1NT	W 3 DQ		150	-1
13	8	1S	S-1 HK		100	1

Board (19) Av: NS=+70

N-S	E-W	Contract	L	N-S	E-W	IMP
1	12	2H	S 3 C5		140	2
12	1	2H	N 2 CA		110	1
2	11	2H	S 3 C4		140	2
11	2	3H	S 3 H5		140	2
3	10	3H	N 3 C5		140	2
10	3	3H	N 3 C9		140	2
4	9	4H	S-1 H4		50	-3
9	4	4H	S-1 D3		50	-3
6	15	4Hx	N-2 CA		300	-9
15	6	3NT	N-1 D4		50	-3
7	14	3H	N 3 CK	140		2
14	7	2H	N 3 CA	140		2
8	13	4H	S-1 H6		50	-3
13	8	3H	S 3 H5	140		2

Board (20) Av: NS=+630

N-S	E-W	Contract	L	N-S	E-W	IMP
1	12	3NT	S 3 H4	600		-1
12	1	3NT	S 3 H4	600		-1
2	11	3NT	N 3 S6	600		-1
11	2	3NT	N 4 SQ	630		0
3	10	3NT	S 4 H4	630		0
10	3	3NT	N 4 SJ	630		0
4	9	3NT	N 4 SQ	630		0
9	4	3NT	N 4 SQ	630		0
6	15	3NT	S 4 H4	630		0
15	6	3NT	N 4 SQ	630		0
7	14	3NT	N 4 SQ	630		0
14	7	3NT	N 4 SK	630		0
8	13	3NT	N 4 SQ	630		0
13	8	3NT	N 4 SQ	630		0