

1

♠K95
 ♠A10764
 ♠A10
 ♠AK7

♠873
 ♠985
 ♠Q62
 ♠J1084

♠AJ
 ♠QJ3
 ♠KJ985
 ♠632

♠Q10642
 ♠K2
 ♠743
 ♠Q95

Board (1) Av: NS=+220

N-S	E-W	Contract	L	N-S	E-W	IMP
1	10	4S	N 5 HQ	450		6
10	1	4S	S 5 CJ	450		6
2	9	3NT	N-1 D8		50	-7
9	2	3NT	N-1 D8		50	-7
3	12	3S	S 5 D2	200		-1
12	3	2H	N 5 C2	200		-1
4	11	3NT	N-1 D8		50	-7
11	4	3NT	N-1 D8		50	-7
5	14	4S	S 5 D2	450		6
14	5	2S	S 5 D2	200		-1
6	13	4H	N 5 SA	450		6
13	6	3NT	N-1 D8		50	-7
8	15	4S	S 4 D2	420		5
15	8	4S	S 5 D2	450		6

2

♠KQ743
 ♠Q106
 ♠Q42
 ♠Q2

♠A2
 ♠J97532
 ♠K83
 ♠95

♠J6
 ♠8
 ♠J9765
 ♠KJ843

♠10985
 ♠AK4
 ♠A10
 ♠A1076

Board (2) Av: NS=+440

N-S	E-W	Contract	L	N-S	E-W	IMP
1	10	4S	N-1 H3		100	-11
10	1	3NT	S 4 D8	630		5
2	9	4S	N 4 D6	620		5
9	2	4S	N 4 H8	620		5
3	12	4S	S 4 C9	620		5
12	3	4S	S 5 C9	650		5
4	11	4S	S 4 H8	620		5
11	4	4S	N-1 H8		100	-11
5	14	4S	S-1 H7		100	-11
14	5	4S	N-1 H8		100	-11
6	13	4S	S 4 H2	620		5
13	6	4S	N 4 H8	620		5
8	15	4S	N 4 H8	620		5
15	8	3NT	S 4 C9	630		5

3

♠72
 ♠QJ108754
 ♠2
 ♠KQ5

♠QJ43
 ♠K
 ♠QJ3
 ♠AJ743

♠A865
 ♠A9
 ♠K974
 ♠982

♠K109
 ♠632
 ♠A10865
 ♠106

Board (3) Av: NS=+70

N-S	E-W	Contract	L	N-S	E-W	IMP
1	10	4S	W-1 HQ	100		1
10	1	5Hx	N-1 C2		100	-5
2	9	4Hx	N-1 C9		100	-5
9	2	4S	W-2 D2	200		4
3	12	5Hx	N-2 C9		300	-9
12	3	3S	W 4 HQ		170	-6
4	11	4S	W-2 D2	200		4
11	4	4S	W-2 D2	200		4
5	14	5Hx	N-2 C2		300	-9
14	5	4S	W-2 D2	200		4
6	13	4S	W-3 D2	300		6
13	6	4S	W-1 D2	100		1
8	15	4S	W-2 D2	200		4
15	8	4Hx	N 4 HA	590		11

4

♠Q9764
 ♠4
 ♠AJ832
 ♠105

♠K8
 ♠K85
 ♠1094
 ♠AK743

♠AJ3
 ♠AJ92
 ♠75
 ♠J962

♠1052
 ♠Q10763
 ♠KQ6
 ♠Q8

Board (4) Av: NS=-260

N-S	E-W	Contract	L	N-S	E-W	IMP
1	10	3NT	W-1 D3	100		8
10	1	3NT	W-1 D3	100		8
2	9	3NT	W 4 S6		630	-9
9	2	3NT	E 4 S2		630	-9
3	12	2NT	W 3 S6	150		3
12	3	2C	W 4 H4	130		4
4	11	4C	W 5 H4	150		3
11	4	3S	N-1 CJ	100		4
5	14	3C	W 5 S4	150		3
14	5	2S	N-1 C6	100		4
6	13	3NT	W-1 D3	100		8
13	6	3NT	W 4 S6		630	-9
8	15	3NT	W 4 S6		630	-9
15	8	3NT	W 4 S6		630	-9

5

♠J97
 ♠A8765
 ♠83
 ♠K85

♠83
 ♠QJ32
 ♠KQ2
 ♠AJ63

♠A64
 ♠K94
 ♠AJ104
 ♠Q42

♠KQ1052
 ♠10
 ♠9765
 ♠1097

Board (5) Av: NS=-400

N-S	E-W	Contract	L	N-S	E-W	IMP
1	10	3NT	E 3 SQ	400		0
10	1	3NT	E 3 SK	400		0
2	9	3NT	E 3 S5	400		0
9	2	3NT	E 3 SK	400		0
3	12	3NT	E 3 SK	400		0
12	3	3NT	E 3 S5	400		0
4	11	3NT	E 3 SK	400		0
11	4	3NT	E 3 S5	400		0
5	14	3NT	E 4 S5	430		-1
14	5	3NT	E 3 SK	400		0
6	13	3NT	E 3 SK	400		0
13	6	3NT	E 4 SK	430		-1
8	15	3NT	E 3 SQ	400		0
15	8	3NT	E 3 S5	400		0

6

♠KQ6
 ♠A762
 ♠AK542
 ♠4

♠AQJ9854
 ♠Q
 ♠AQJ1053

♠A1097
 ♠3
 ♠1083
 ♠K9876

♠J85432
 ♠K10
 ♠J976
 ♠2

Board (6) Av: NS=-140

N-S	E-W	Contract	L	N-S	E-W	IMP
1	10	5Sx	N-1 H3		100	1
10	1	5Cx	W 5 DA		750	-12
2	9	4H	W 5 SK		650	-11
9	2	5D	N 5 H3	400		11
3	12	4S	S 4 CA	420		11
12	3	6C	W-1 DK	100		6
4	11	6Cx	W-1 DA	200		8
11	4	6Cx	W-1 DA	200		8
5	14	5C	W 6 SK		620	-10
14	5	5Cx	W 5 DA		750	-12
6	13	5Sx	S 5 DQ	650		13
13	6	4Sx	S 4 HQ	590		12
8	15	6Cx	W 6 SK		1540	-16
15	8	5Cx	W 5 DK		750	-12

7

♠KQ10532
 ♠95
 ♠K3
 ♠J86

♠A86
 ♠Q3
 ♠A1096542
 ♠5

♠97
 ♠AJ1076
 ♠J8
 ♠K1072

♠J4
 ♠K842
 ♠Q7
 ♠AQ943

Board (7) Av: NS=+90

N-S	E-W	Contract	L	N-S	E-W	IMP
1	10	3D	W 3 SK		110	-5
10	1	4S	N-1 DJ		100	-5
2	9	3S	N 3 DJ	140		2
9	2	3S	N 5 D8	200		3
3	12	2S	N 5 S9	200		3
12	3	3S	N 3 DJ	140		2
4	11	4S	N-1 DJ		100	-5
11	4	4S	N 5 DJ	650		11
5	14	3S	N-1 DJ		100	-5
14	5	3S	N 3 DJ	140		2
6	13	2S	N 4 DJ	170		2
13	6	3D	W-1 SK	100		0
8	15	3S	N 3 DJ	140		2
15	8	2S	N 2 DJ	110		1

8

♠8432
 ♠Q975
 ♠94
 ♠K95

♠AQ76
 ♠AK104
 ♠6
 ♠10743

♠KJ9
 ♠863
 ♠AQ108752
 ♠

♠105
 ♠J2
 ♠KJ3
 ♠AQJ862

Board (8) Av: NS=-10

N-S	E-W	Contract	L	N-S	E-W	IMP
1	10	4H	W-1 S3	50		2
10	1	2D	W 5 D3		150	-4
2	9	3D	E 5 CA		150	-4
9	2	2C	W-3 H5	150		4
3	12	5D	E 5 ST		400	-9
12	3	3NT	W-3 S4	150		4
4	11	3NT	W-2 S4	100		3
11	4	3NT	W-2 S4	100		3
5	14	2D	E 5 ST		150	-4
14	5	3D	E 5 ST		150	-4
6	13	3NT	W-2 H5	100		3
13	6	4H	W-1 C5	50		2
8	15	3C	S-2 HA		100	-3
15	8	4H	W-1 S3	50		2

9

♠10
 ♠842
 ♠A10843
 ♠AKQ5

♠53
 ♠K63
 ♠Q972
 ♠J983

♠J9642
 ♠J1095
 ♠5
 ♠1064

♠AKQ87
 ♠AQ7
 ♠KJ6
 ♠72

Board (9) Av: NS=+410

N-S	E-W	Contract	L	N-S	E-W	IMP
1	10	6D	N-1 HJ		50	-10
10	1	6NT	N-2 HJ		100	-11
2	9	6D	N 6 HJ	920		11
9	2	6D	N 6 HJ	920		11
3	12	6D	N-1 HJ		50	-10
12	3	6NT	S-6 C8	990		11
4	11	6D	N-1 HJ		50	-10
11	4	6D	N-1 HJ		50	-10
5	14	5D	N 5 HT	400		0
14	5	6NT	S-1 C9		50	-10
6	13	6D	N 6 HJ	920		11
13	6	7D	N 7 HJ	1440		14
8	15	6NT	S 7 H9	1020		12
15	8	6D	N-1 HT		50	-10

10

♠Q
 ♠AK9532
 ♠109
 ♠AQ52

♠J75
 ♠6
 ♠AQJ8642
 ♠84

♠AK962
 ♠87
 ♠K3
 ♠KJ76

♠10843
 ♠QJ104
 ♠75
 ♠1093

Board (10) Av: NS=-280

N-S	E-W	Contract	L	N-S	E-W	IMP
1	10	5H	N-3 SK		300	-1
10	1	4S	E 4 HQ		620	-8
2	9	4S	E 5 HQ		650	-9
9	2	4S	E-3 HQ	300		11
3	12	4Hx	N-2 SA		500	-6
12	3	4S	E-1 HQ	100		9
4	11	4S	E 4 HQ		620	-8
11	4	4S	E 4 HQ		620	-8
5	14	4S	E-2 HQ	200		10
14	5	4S	E 4 SQ		620	-8
6	13	6S	E-3 HQ	300		11
13	6	4S	E-1 HQ	100		9
8	15	3S	E 3 HQ		140	4
15	8	4S	E 4 HQ		620	-8

11

♠A1093
 ♠Q85
 ♠98
 ♠AK32

♠J85
 ♠J10
 ♠KJ6
 ♠QJ974

♠K762
 ♠AK64
 ♠7532
 ♠8

♠Q4
 ♠9732
 ♠AQ104
 ♠1065

Board (11) Av: NS=+10

N-S	E-W	Contract	L	N-S	E-W	IMP
1	10	1NT	S 1 CQ		90	2
10	1	1NT	S 2 HJ		120	3
2	9	1NT	W 1 D9		90	-3
9	2	1NT	N 2 S3	120		3
3	12	1NT	N-1 HK		50	-2
12	3	1NT	N-1 S6		50	-2
4	11	1NT	S-3 C7		150	-4
11	4	1NT	S 2 HJ	120		3
5	14	1NT	W-1 D9	50		1
14	5	2H	S-2 HJ		100	-3
6	13	2Dx	E-2 SQ	300		7
13	6	1NT	W 1 H5		90	-3
8	15	2H	E-2 C5	100		3
15	8	1NT	W 2 S9		120	-4

12

♠10872
 ♠97532
 ♠6
 ♠KQ7

♠A5
 ♠AQ4
 ♠AQJ10874
 ♠A

♠Q643
 ♠J6
 ♠93
 ♠J10543

♠KJ9
 ♠K108
 ♠K52
 ♠9862

Board (12) Av: NS=-240

N-S	E-W	Contract	L	N-S	E-W	IMP
1	10	3NT	W 5 CQ		460	-6
10	1	3NT	W 4		430	-5
2	9	5D	W 5 CK		400	-4
9	2	4S	E-3 C9	150		9
3	12	5D	E-1 C9		50	7
12	3	3NT	E 3 C9		400	-4
4	11	6D	E-1 C8	50		7
11	4	3NT	E 4 H8		430	-5
5	14	1D	W 5 CK		150	3
14	5	1D	W 5 H2		150	3
6	13	1D	W 5 CK		150	3
13	6	5D	E-1 C9	50		7
8	15	3NT	W 4 H3		430	-5
15	8	3NT	E 6 SJ		490	-6

13

♠K875
 ♠KQ6
 ♠8643
 ♠AJ

♠Q43
 ♠875
 ♠KQJ2
 ♠1063

♠J10942
 ♠A1095
 ♠KQ52

♠AJ10962
 ♠A3
 ♠7
 ♠9874

Board (13) Av: NS=+570

N-S	E-W	Contract	L	N-S	E-W	IMP
1	10	4S	N 6 CK	680		3
10	1	4S	S 5 H3	650		2
2	9	3S	S 5 H8	200		-9
9	2	4S	S 5 DK	650		2
3	12	4S	S 5 DK	650		2
12	3	3S	S 5 DK	200		-9
4	11	4S	S 4 DK	620		2
11	4	4S	S 5 DK	650		2
5	14	4S	S 5 DQ	650		2
14	5	3S	S 4 DK	170		-9
6	13	4S	S 4 DK	620		2
13	6	4S	S 5 DK	650		2
8	15	4S	N 4 DA	620		2
15	8	4S	N 5 HT	650		2

14

♠A10
 ♠QJ10
 ♠J9654
 ♠743

♠K765
 ♠K72
 ♠8
 ♠AKJ82

♠J9832
 ♠A865
 ♠K7
 ♠65

♠Q4
 ♠943
 ♠AQ1032
 ♠Q109

Board (14) Av: NS=+40

N-S	E-W	Contract	L	N-S	E-W	IMP
1	10	2C	W 3 HQ		110	-4
10	1	4S	W-1 D3	50		0
2	9	4S	E 4 DA		420	-10
9	2	4S	E-1 H9	50		0
3	12	4S	E-1 H9	50		0
12	3	4S	E-1 H3	50		0
4	11	4S	E-1 H4	50		0
11	4	4S	E-1 H9	50		0
5	14	4S	E-1 H3	50		0
14	5	4S	E-1 H3	50		0
6	13	4S	E-1 H9	50		0
13	6	4S	E-1 H4	50		0
8	15	4S	W-2 HQ	100		2
15	8	4S	W-1 HQ	50		0

15

♠1098
 ♠1043
 ♠J762
 ♠Q53

♠Q62
 ♠95
 ♠A8
 ♠KJ10976

♠AKJ743
 ♠AQJ76
 ♠104
 ♠

♠5
 ♠K82
 ♠KQ953
 ♠A842

Board (15) Av: NS=-450

N-S	E-W	Contract	L	N-S	E-W	IMP
1	10	4S	E 5 DK		450	0
10	1	4S	E 5 DK		450	0
2	9	4S	E 5 DK		450	0
9	2	4S	W 5 D2		450	0
3	12	4S	W 5 D2		450	0
12	3	4S	E 5 DK		450	0
4	11	4S	E 5 DK		450	0
11	4	5S	E 5 DK		450	0
5	14	4S	E 6 H2		480	-1
14	5	4S	E 5 DK		450	0
6	13	4S	E 5 DK		450	0
13	6	6S	E-1 DK	50		11
8	15	4S	E 5 DK		450	0
15	8	4S	E 6 S5		480	-1

16

♠AK6
 ♠K853
 ♠J98
 ♠K65

♠Q1072
 ♠109
 ♠AK
 ♠AQJ92

♠J98543
 ♠J
 ♠Q10542
 ♠8

♠AQ7642
 ♠763
 ♠10743

Board (16) Av: NS=-640

N-S	E-W	Contract	L	N-S	E-W	IMP
1	10	4S	E 4 D3		620	1
10	1	4Sx	E 4 C3		790	-4
2	9	4S	E 5 D7		650	0
9	2	5Hx	N-4 C8		800	-4
3	12	1C	W-1 SK	100		12
12	3	4S	E 4 HA		620	1
4	11	4S	E 4 C7		620	1
11	4	4S	W 4 H3		620	1
5	14	4Sx	W 4 H5		790	-4
14	5	4H	S-2 DK		100	11
6	13	4Sx	E 4 HA		790	-4
13	6	4Sx	W 4 H3		790	-4
8	15	4S	E 4 D2		620	1
15	8	4S	E 5 C4		650	0

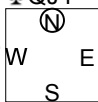
17

♠Q832
 ♥102
 ♦AJ76
 ♣QJ4

♠K109
 ♥A97654
 ♦K
 ♣K85

♠AJ654
 ♥KJ8
 ♦108
 ♣1092

♠7
 ♥Q3
 ♦Q95432
 ♣A763



Board (17) Av: NS=-310

N-S	E-W	Contract	L	N-S	E-W	IMP
1	10	4D	S-1	HQ	50	6
10	1	3H	W 6	D7	230	2
2	9	4H	W 5	CQ	450	-4
9	2	4H	W 6	H2	480	-5
3	12	3D	S 3	C5	110	9
12	3	3H	W 4	DA	170	4
4	11	4H	W-1	DA	50	8
11	4	4H	W 6	S2	480	-5
5	14	4H	W 4	DA	420	-3
14	5	3H	W 3	DA	140	5
6	13	4H	W 6	CQ	480	-5
13	6	4H	W 5	CQ	450	-4
8	15	4H	W 4	H2	420	-3
15	8	4S	E 4	D3	420	-3

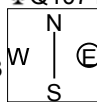
18

♠J9854
 ♥87
 ♦6
 ♣Q10743

♠Q1072
 ♥KQ65
 ♦AQ1053
 ♣

♠A3
 ♥1042
 ♦J9872
 ♣652

♠K6
 ♥AJ93
 ♦K4
 ♣AKJ98



Board (18) Av: NS=-140

N-S	E-W	Contract	L	N-S	E-W	IMP
1	10	2S	N-1	D2	100	1
10	1	4D	E 5	CA	150	0
2	9	2NT	S-1	D5	100	1
9	2	3NT	S-1	D5	100	1
3	12	4D	E 5	CK	150	0
12	3	3D	E 4	CA	130	0
4	11	4D	E 5	CA	150	0
11	4	3D	E 4	CK	130	0
5	14	5D	W 5	H8	400	-6
14	5	5C	N-1	D2	100	1
6	13	4C	S 5	DA	150	7
13	6	5Dx	E 5	CA	550	-9
8	15	3NT	S-1	DA	100	1
15	8	3NT	S-1	DA	100	1

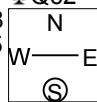
19

♠762
 ♥K7632
 ♦J5
 ♣Q62

♠AK108
 ♥QJ105
 ♦K10
 ♣A84

♠953
 ♥A
 ♦Q9763
 ♣J1097

♠QJ4
 ♥984
 ♦A842
 ♣K53



Board (19) Av: NS=-290

N-S	E-W	Contract	L	N-S	E-W	IMP
1	10	3NT	W 3	H3	600	-7
10	1	3NT	W 4	H3	630	-8
2	9	1NT	W 3	H3	150	4
9	2	1NT	W 4	H3	180	3
3	12	1NT	W 3	H3	150	4
12	3	1NT	W 4	H3	180	3
4	11	3NT	W-1	H3	100	9
11	4	1NT	W 4	H3	180	3
5	14	3NT	W-1	H3	100	9
14	5	1NT	W 2	H3	120	5
6	13	1NT	W 3	H3	150	4
13	6	3NT	W 4	S6	630	-8
8	15	3NT	W 4	H3	630	-8
15	8	3NT	W 3	H3	600	-7

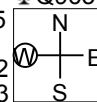
20

♠742
 ♥Q8
 ♦J764
 ♣Q965

♠K105
 ♥J74
 ♦Q102
 ♣AK73

♠Q93
 ♥K9653
 ♦A98
 ♣J8

♠AJ86
 ♥A102
 ♦K53
 ♣1042



Board (20) Av: NS=-30

N-S	E-W	Contract	L	N-S	E-W	IMP
1	10	2H	E 2	C2	110	-2
10	1	1NT	W 2	C3	120	-3
2	9	2H	E 2	D3	110	-2
9	2	2H	E 2	C2	110	-2
3	12	2H	E 2	D3	110	-2
12	3	3H	E-1	C2	100	4
4	11	2H	W 3	S4	140	-3
11	4	1NT	W 1	D6	90	-2
5	14	2H	E 2	D3	110	-2
14	5	3H	E-1	C2	100	4
6	13	3NT	W-2	C5	200	6
13	6	3NT	E-2	S6	200	6
8	15	1NT	W-1	D4	100	4
15	8	2H	W 2	C6	110	-2