

1

♠K95
 ♠A10764
 ♠A10
 ♠AK7

♠873
 ♠985
 ♠Q62
 ♠J1084

♠AJ
 ♠QJ3
 ♠KJ985
 ♠632

♠Q10642
 ♠K2
 ♠743
 ♠Q95

Board (1) Av: NS=+280

N-S	E-W	Contract	L	N-S	E-W	IMP
1	10	1NT N 2	D5	120		-4
10	1	4S S 5	D2	450		5
2	9	5S S 6	CJ	480		5
9	2	3NT N-1	D9		50	-8
3	12	3NT S-2	DQ		100	-9
12	3	4S N 6	C6	480		5
4	11	3NT N-1	D8		50	-8
11	4	4S S 5	C5	450		5
5	14	3NT N-1	D8		50	-8
14	5	4S N 5	C6	450		5
6	13	2S S 5	CJ	200		-2
13	6	5S N 5	D2	450		5
8	15	4S S 5	D2	450		5
15	8	4S S 5	CJ	450		5

2

♠KQ743
 ♠Q106
 ♠Q42
 ♠Q2

♠A2
 ♠J97532
 ♠K83
 ♠95

♠J6
 ♠8
 ♠J9765
 ♠KJ843

♠10985
 ♠AK4
 ♠A10
 ♠A1076

Board (2) Av: NS=+200

N-S	E-W	Contract	L	N-S	E-W	IMP
1	10	4S N 4	H8	620		9
10	1	3NT S 4	H6	630		10
2	9	3NT S 3	H6	600		9
9	2	4S N-1	H8		100	-7
3	12	3NT N 5	D3	660		10
12	3	4S S 4	H5	620		9
4	11	4S N-1	H8		100	-7
11	4	4S S-1	H4		100	-7
5	14	4S S-1	H7		100	-7
14	5	4S S-1	H5		100	-7
6	13	4S S 4	C9	620		9
13	6	4S S-1	H5		100	-7
8	15	4S N-1	H8		100	-7
15	8	4S N-1	H8		100	-7

3

♠72
 ♠QJ108754
 ♠2
 ♠KQ5

♠QJ43
 ♠K
 ♠QJ3
 ♠AJ743

♠A865
 ♠A9
 ♠K974
 ♠982

♠K109
 ♠632
 ♠A10865
 ♠106

Board (3) Av: NS=+110

N-S	E-W	Contract	L	N-S	E-W	IMP
1	10	4S E-1	H2	100		0
10	1	4S W-2	D2	200		3
2	9	4S E-2	D3	200		3
9	2	4S W-2	D2	200		3
3	12	5Hx N-2	C2		300	-9
12	3	4S W-2	D2	200		3
4	11	3S E 3	H2		140	-6
11	4	4S W-2	D2	200		3
5	14	5Hx N-2	SA		300	-9
14	5	4S W-2	D2	200		3
6	13	4S W-1	HQ	100		0
13	6	5S W-3	D2	300		5
8	15	4S W-2	D2	200		3
15	8	4S W-1	HQ	100		0

4

♠Q9764
 ♠4
 ♠AJ832
 ♠105

♠K8
 ♠K85
 ♠1094
 ♠AK743

♠AJ3
 ♠AJ92
 ♠75
 ♠J962

♠1052
 ♠Q10763
 ♠KQ6
 ♠Q8

Board (4) Av: NS=-360

N-S	E-W	Contract	L	N-S	E-W	IMP
1	10	3NT W 4	S6		630	-7
10	1	3NT W-1	D3	100		-7
2	9	1NT W 4	S6		180	5
9	2	2NT W 4	S6		180	5
3	12	3NT W-1	D3	100		10
12	3	3NT W-1	D2	100		10
4	11	3NT W 4	S6		630	-7
11	4	3C W 5	H4		150	5
5	14	3NT E 4	ST		630	-7
14	5	2NT E 4	S2		180	5
6	13	3NT W 4	S6		630	-7
13	6	3NTxw 3	H2		750	-9
8	15	3NT E 4	S2		630	-7
15	8	3NT W 4	S6		630	-7

5

♠J97
 ♠A8765
 ♠83
 ♠K85

♠83
 ♠QJ32
 ♠KQ2
 ♠AJ63

♠A64
 ♠K94
 ♠AJ104
 ♠Q42

♠KQ1052
 ♠10
 ♠9765
 ♠1097

Board (5) Av: NS=-400

N-S	E-W	Contract	L	N-S	E-W	IMP
1	10	3NT E 3	SK		400	0
10	1	3NT E 3	SQ		400	0
2	9	3NT E 3	SK		400	0
9	2	3NT E 3	S5		400	0
3	12	3NT E 3	SQ		400	0
12	3	3NT E 3	S2		400	0
4	11	3NT E 3	SK		400	0
11	4	3NT E 3	SK		400	0
5	14	3NT E 5	HT		460	-2
14	5	3NT E 4	CT		430	-1
6	13	3NT E 3	SQ		400	0
13	6	3NT E 3	SK		400	0
8	15	3NT E 3	SQ		400	0
15	8	3NT E 3	S6		400	0

6

♠KQ6
 ♠A762
 ♠AK542
 ♠4

♠AQJ9854
 ♠Q
 ♠AQJ1053

♠A1097
 ♠3
 ♠1083
 ♠K9876

♠J85432
 ♠K10
 ♠J976
 ♠2

Board (6) Av: NS=+190

N-S	E-W	Contract	L	N-S	E-W	IMP
1	10	6Dx N-3	SA		500	-12
10	1	4S N 4	HQ	420		6
2	9	6Cx W-1	DA	200		0
9	2	5S S-1	HQ		50	-6
3	12	4S S 4	CA	420		6
12	3	3S N 4	H3	170		-1
4	11	5Dx N 5	H3	550		8
11	4	4Sx N 4	H3	590		9
5	14	5Dx N 5	H8	550		8
14	5	5Cx E 5	DA		750	-14
6	13	3H W-2	DA	200		0
13	6	5S S-1	HQ		50	-6
8	15	4S N 4	C7	420		6
15	8	5Sx N-1	CK		100	-7

7

♠KQ10532
 ♠95
 ♠K3
 ♠J86

♠A86
 ♠Q3
 ♠A1096542
 ♠5

♠97
 ♠AJ1076
 ♠J8
 ♠K1072

♠J4
 ♠K842
 ♠Q7
 ♠AQ943

Board (7) Av: NS=+120

N-S	E-W	Contract	L	N-S	E-W	IMP
1	10	3D W-1	SK	100		-1
10	1	4S N-1	DJ		100	-6
2	9	3S N 4	DJ	170		2
9	2	2S N 3	DJ	140		1
3	12	3S N 3	DJ	140		1
12	3	4S N 5	DJ	650		11
4	11	2S N 2	D8	110		0
11	4	3S N 4	DJ	170		2
5	14	3H E-2	SJ	200		2
14	5	2S N 3	DJ	140		1
6	13	2S N-1	DJ		100	-6
13	6	4D W-1	SK	100		-1
8	15	4D W-1	SK	100		-1
15	8	3S N 3	DJ	140		1

8

♠8432
 ♠Q975
 ♠94
 ♠K95

♠AQ76
 ♠AK104
 ♠6
 ♠10743

♠KJ9
 ♠863
 ♠AQ108752
 ♠

♠105
 ♠J2
 ♠KJ3
 ♠AQJ862

Board (8) Av: NS=-60

N-S	E-W	Contract	L	N-S	E-W	IMP
1	10	5D E 5	CA		400	-8
10	1	2D W 4	C4		130	-2
2	9	2D E 5	CA		150	-3
9	2	3NT W-3	S4	150		5
3	12	2D E 5	ST		150	-3
12	3	4D E 5	CA		150	-3
4	11	5Dx E 5	CK		550	-10
11	4	3NT W-3	H5	150		5
5	14	3D E 5	ST		150	-3
14	5	3NT W-3	H5	150		5
6	13	3NT W-2	H6	100		4
13	6	3NT W-2	H5	100		4
8	15	3D E 5	ST		150	-3
15	8	3NT W-2	H5	100		4

9

♠10
♥842
♦A10843
♣AKQ5

♠53
♥K63
♦Q972
♣J983

♠J9642
♥J1095
♦5
♣1064

♠AKQ87
♥AQ7
♦KJ6
♣72

Board (9) Av: NS=+360

N-S	E-W	Contract	L	N-S	E-W	IMP
1	10	6D	N-1 HJ	920	50	-9
10	1	6D	N 6 D5	920		11
2	9	6NT	N-2 HJ		100	-10
9	2	6D	N-1 HJ		50	-9
3	12	6D	N 6 HJ	920		11
12	3	6NT	N 6 HJ	990		12
4	11	6D	N-1 HJ		50	-9
11	4	6D	N-1 HJ		50	-9
5	14	6D	N-1 HJ		50	-9
14	5	6D	N 6 HJ	920		11
6	13	6D	N 6 HJ	920		11
13	6	6D	N-1 HJ		50	-9
8	15	6D	N-1 HJ		50	-9
15	8	6NT	S 6 C9	990		12

10

♠Q
♥AK9532
♦109
♣AQ52

♠J75
♥6
♦AQJ8642
♣84

♠AK962
♥87
♦K3
♣KJ76

♠10843
♥QJ104
♦75
♣1093

Board (10) Av: NS=-310

N-S	E-W	Contract	L	N-S	E-W	IMP
1	10	4S	E 4 HQ	620		-7
10	1	3S	E 3 HQ	140		5
2	9	4S	W 4 HQ	620		-7
9	2	4S	E-1 HQ	100		9
3	12	5D	W 5 HK	600		-7
12	3	4S	E 4 HQ	620		-7
4	11	5H	S-3 DA	300		0
11	4	5Hx	N-3 H8	800		-10
5	14	4S	E-1 HQ	100		9
14	5	4S	E-3 HQ	300		12
6	13	4S	E-1 HQ	100		9
13	6	4S	E-2 HQ	200		11
8	15	4S	E 4 HQ	620		-7
15	8	4S	E 5 HQ	650		-8

11

♠A1093
♥Q85
♦98
♣AK32

♠J85
♥J10
♦KJ6
♣QJ974

♠K762
♥AK64
♦7532
♣8

♠Q4
♥9732
♦AQ104
♣1065

Board (11) Av: NS=0

N-S	E-W	Contract	L	N-S	E-W	IMP
1	10	1NT	S 1 CQ	90		3
10	1	2S	W-1 CA	50		2
2	9	2H	S-3 HJ		150	-4
9	2	1NT	S 1 CQ	90		3
3	12	2NT	W 2 H5		120	-3
12	3	2H	N-2 S2		100	-3
4	11	1NT	W 2 D9		120	-3
11	4	1NT	W-1 H5	50		2
5	14	1NT	W 2 D9		120	-3
14	5	1NT	S 1 CQ	90		3
6	13	1NT	S 2 CQ	120		3
13	6	1NTxw	-1 H5	100		3
8	15	1NT	N 1 S2	90		3
15	8	1NT	W 3 D9		150	-4

12

♠10872
♥97532
♦6
♣KQ7

♠A5
♥AQ4
♦AQJ10874
♣A

♠Q643
♥J6
♦93
♣J10543

♠KJ9
♥K108
♦K52
♣9862

Board (12) Av: NS=-330

N-S	E-W	Contract	L	N-S	E-W	IMP
1	10	3NT	W 6 H8	490		-4
10	1	5D	E-1 C6	50		-9
2	9	4S	W-3 CK	150		10
9	2	3NT	E 6 SJ	490		-4
3	12	3NT	W 4 H3	430		-3
12	3	3NT	W 5 CK	460		-4
4	11	3NT	W 4 CK	430		-3
11	4	3NT	W 4 H3	430		-3
5	14	3NT	E 6 SJ	490		-4
14	5	3NT	W 4 ST	430		-3
6	13	3NT	E 5 C2	460		-4
13	6	5D	E-1 D2	50		9
8	15	3NT	E 6 SJ	490		-4
15	8	6D	E-2 C9	100		10

13

♠K875
♥KQ6
♦8643
♣AJ

♠Q43
♥875
♦KQJ2
♣1063

♠J10942
♥A1095
♦KQ52
♣AKQ52

♠AJ10962
♥A3
♦7
♣9874

Board (13) Av: NS=+650

N-S	E-W	Contract	L	N-S	E-W	IMP
1	10	4S	S 5 DK	650		0
10	1	4S	N 6 CK	680		1
2	9	4S	S 5 H8	650		0
9	2	4S	S 6 H8	680		1
3	12	4S	S 4 DK	620		-1
12	3	4S	S 4 H8	620		-1
4	11	4S	S 5 DK	650		0
11	4	4S	S 6 H5	680		1
5	14	4S	S 4 DK	620		-1
14	5	4S	S 4 DK	620		-1
6	13	4S	S 4 DK	620		-1
13	6	4S	S 5 DK	650		0
8	15	4S	N 5 HJ	650		0
15	8	4S	N 5 HJ	650		0

14

♠A10
♥QJ10
♦J9654
♣743

♠K765
♥K72
♦8
♣AKJ82

♠J9832
♥A865
♦K7
♣65

♠Q4
♥943
♦AQ1032
♣Q109

Board (14) Av: NS=-150

N-S	E-W	Contract	L	N-S	E-W	IMP
1	10	3S	W 3 HQ	140		0
10	1	4S	E-1 CT	50		5
2	9	5S	E-1 DA	50		5
9	2	2S	E 3 H3	140		0
3	12	4S	W 4 HJ	420		-7
12	3	2C	W 3 HQ	110		1
4	11	4S	E-1 H4	50		5
11	4	4S	E 4 DA	420		-7
5	14	4S	E-1 H4	50		5
14	5	4S	W 4 D2	420		-7
6	13	4S	E-1 H2	50		5
13	6	2S	E 5 SQ	200		-2
8	15	4S	E 4 DA	420		-7
15	8	3S	W 3 HQ	140		0

15

♠1098
♥1043
♦J762
♣Q53

♠Q62
♥95
♦A8
♣KJ10976

♠AKJ743
♥AQJ76
♦104
♣

♠5
♥K82
♦KQ953
♣A842

Board (15) Av: NS=-370

N-S	E-W	Contract	L	N-S	E-W	IMP
1	10	4S	E 5 DK	450		-2
10	1	5S	E 5 DK	450		-2
2	9	4S	E 6 DK	480		-3
9	2	6S	E-1 DK	50		9
3	12	4S	W 6 ST	480		-3
12	3	4S	E 5 DK	450		-2
4	11	4S	E 5 DK	450		-2
11	4	4S	W 6 ST	480		-3
5	14	4S	E 5 DK	450		-2
14	5	4S	E 4 DK	420		-2
6	13	5C	W-2 D6	100		10
13	6	6S	E-1 DK	50		9
8	15	4S	E 5 DK	450		-2
15	8	4S	E 5 DK	450		-2

16

♠AK6
♥K853
♦J98
♣K65

♠Q1072
♥109
♦AK
♣AQJ92

♠J98543
♥J
♦Q10542
♣8

♠AQ7642
♥763
♦Q10743
♣

Board (16) Av: NS=-400

N-S	E-W	Contract	L	N-S	E-W	IMP
1	10	4Sx	E 4 HA	790		-9
10	1	3NT	N 3 S4	400		13
2	9	4S	E 4 D6	620		-6
9	2	4H	N-2 C8	100		7
3	12	5Hx	N-4 C8	800		-9
12	3	2S	W 5 D8	200		5
4	11	4S	E 4 HA	620		-6
11	4	5Hx	S-2 DA	300		3
5	14	6Hx	S-5 DA	1100		-12
14	5	3S	E 4 D3	170		6
6	13	3S	E 5 C4	200		5
13	6	4Sx	E 4 D6	790		-9
8	15	4S	W 4 H2	620		-6
15	8	5Dx	E-2 HA	500		14

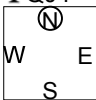
17

♠Q832
 ♥102
 ♦AJ76
 ♣QJ4

♠K109
 ♥A97654
 ♦K
 ♣K85

♠AJ654
 ♥KJ8
 ♦108
 ♣1092

♠7
 ♥Q3
 ♦Q95432
 ♣A763



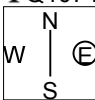
18

♠J9854
 ♥87
 ♦6
 ♣Q10743

♠Q1072
 ♥KQ65
 ♦AQ1053
 ♣

♠A3
 ♥1042
 ♦J9872
 ♣652

♠K6
 ♥AJ93
 ♦K4
 ♣AKJ98



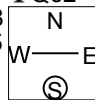
19

♠762
 ♥K7632
 ♦J5
 ♣Q62

♠AK108
 ♥QJ105
 ♦K10
 ♣A84

♠953
 ♥A
 ♦Q9763
 ♣J1097

♠QJ4
 ♥984
 ♦A842
 ♣K53



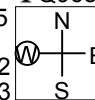
20

♠742
 ♥Q8
 ♦J764
 ♣Q965

♠K105
 ♥J74
 ♦Q102
 ♣AK73

♠Q93
 ♥K9653
 ♦A98
 ♣J8

♠AJ86
 ♥A102
 ♦K53
 ♣1042



Board (17) Av: NS=-300

N-S	E-W	Contract	L	N-S	E-W	IMP
1	10	4S	W 6 S3	480	-5	
10	1	3H	W 6 CQ	230	2	
2	9	4H	W 4 DA	420	-3	
9	2	4D	S-1 HA	50	6	
3	12	3H	W 5 DA	200	3	
12	3	4H	W 4 DA	420	-3	
4	11	3H	W 3 DA	140	4	
11	4	5D	N-2 SA	100	5	
5	14	3H	E 6 CQ	230	2	
14	5	3H	W 5 CQ	200	3	
6	13	4H	W 6 H2	480	-5	
13	6	4H	W 6 DA	480	-5	
8	15	4H	W 6 CQ	480	-5	
15	8	3H	W 5 D7	200	3	

Board (18) Av: NS=-210

N-S	E-W	Contract	L	N-S	E-W	IMP
1	10	5D	W 5 D6	400	-5	
10	1	5D	W-1 S2	50	6	
2	9	5Cx	S-1 DA	200	0	
9	2	2NT	S 2 DQ	120	8	
3	12	4Dx	W 5 H8	610	-9	
12	3	5Dx	E 5 CA	550	-8	
4	11	3NT	S-1 DA	100	3	
11	4	5C	S-1 HK	100	3	
5	14	3NT	S-1 D4	100	3	
14	5	5Dx	W 5 C2	550	-8	
6	13	3S	N-2 D2	200	0	
13	6	3NT	S-1 D6	100	3	
8	15	4D	W 5 H8	150	2	
15	8	3S	N-1 H3	100	3	

Board (19) Av: NS=-320

N-S	E-W	Contract	L	N-S	E-W	IMP
1	10	3NT	W 3 H3	600	-7	
10	1	3NT	W-1 H3	100	9	
2	9	3NT	W 3 H3	600	-7	
9	2	1NT	W 3 H3	150	5	
3	12	1NT	W 4 H3	180	4	
12	3	1NT	W 3 H2	150	5	
4	11	3NT	W 3 H3	600	-7	
11	4	1NT	W 3 H3	150	5	
5	14	3NT	W-1 H4	100	9	
14	5	1NT	W 2 H5	120	5	
6	13	3NT	W 3 H3	600	-7	
13	6	1NT	W 3 H3	150	5	
8	15	3NT	W 3 H3	600	-7	
15	8	4S	W 4 DJ	620	-7	

Board (20) Av: NS=+30

N-S	E-W	Contract	L	N-S	E-W	IMP
1	10	2H	E-1 C2	100	2	
10	1	2NT	W-2 C5	200	5	
2	9	3H	E-1 SA	100	2	
9	2	3NT	W-3 D4	300	7	
3	12	1NT	W 1 S7	90	-3	
12	3	4H	W-1 S2	100	2	
4	11	2NT	W-1 S7	100	2	
11	4	2H	W 2 S4	110	-4	
5	14	2H	E 2 C4	110	-4	
14	5	1NT	W 1 S7	90	-3	
6	13	3NT	W-2 D4	200	5	
13	6	2H	E 4 H2	170	-5	
8	15	2H	E-1 C2	100	2	
15	8	1NT	W 2 C3	120	-4	