

33 ♠85
♥AQ7632
♦AQJ109
♣

♠AKQ76 ♥2
♥K4 ♥♥J1085
♦86 ♦♦K42
♣J853 ♣♣Q10762

W N E S

♠J10943
♥9
♦753
♣AK94

Board (33) Av: NS=+180

N-S	E-W	Contract	L	N-S	E-W	IMP	
1	2	4D	N-1	S2	50	-6	
2	1	3NT	S	3	SK	400	6

34 ♠J763
♥AK76
♦4
♣J1063

♠K82 ♥Q104
♥♥J9543 ♥♥Q
♦K92 ♦♦AQ876
♣A8 ♣♣KQ42

W N E S

♠A95
♥1082
♦J1053
♣975

Board (34) Av: NS=-420

N-S	E-W	Contract	L	N-S	E-W	IMP	
1	2	3NT	E	4	D3	430	0
2	1	3NT	E	3	HT	400	1

35 ♠10985
♥AQ5
♦43
♣8632

♠AKQ4 ♥J72
♥♥J83 ♥♥102
♦105 ♦♦AJ982
♣KJ95 ♣♣1074

W N E S

♠63
♥K9764
♦KQ76
♣AQ

Board (35) Av: NS=+10

N-S	E-W	Contract	L	N-S	E-W	IMP	
1	2	2S	W	2	C3	110	-3
2	1	1NT	S	2	SK	120	3

36 ♠82
♥1065
♦KQJ84
♣874

♠QJ4 ♥AK109765
♥♥AJ2 ♥♥K4
♦A102 ♦♦9
♣KJ62 ♣♣AQ3

W N E S

♠3
♥Q9873
♦7653
♣1095

Board (36) Av: NS=-1470

N-S	E-W	Contract	L	N-S	E-W	IMP	
1	2	7NT	W	7	DK	2220	-13
2	1	4NT	W	7	DK	720	13

37 ♠Q
♥9853
♦J84
♣AJ542

♠10432 ♥987
♥♥742 ♥♥AQJ6
♦A2 ♦♦Q106
♣KQ76 ♣♣1098

W N E S

♠AKJ65
♥K10
♦K9753
♣3

Board (37) Av: NS=+120

N-S	E-W	Contract	L	N-S	E-W	IMP	
1	2	2S	S	2	H4	110	0
2	1	2D	S	4	CK	130	0

38 ♠A73
♥Q852
♦Q1063
♣A6

♠Q842 ♥J6
♥♥J109 ♥♥A64
♦K5 ♦♦J742
♣10985 ♣♣7432

W N E S

♠K1095
♥K73
♦A98
♣KQJ

Board (38) Av: NS=+420

N-S	E-W	Contract	L	N-S	E-W	IMP	
1	2	3NT	N	4	SJ	430	0
2	1	3NT	S	3	CT	400	-1

39 ♠AQ8
♥9732
♦J762
♣83

♠104 ♥7653
♥♥10865 ♥♥QJ4
♦A43 ♦♦KQ10
♣J654 ♣♣Q109

W N E S

♠KJ92
♥AK
♦985
♣AK72

Board (39) Av: NS=+30

N-S	E-W	Contract	L	N-S	E-W	IMP	
1	2	2NT	N	3	DQ	150	3
2	1	3NT	S-1	C4	100	-4	

40 ♠KJ9842
♥
♦J53
♣QJ87

♠763 ♥A
♥♥Q9842 ♥♥A65
♦A104 ♦♦K872
♣95 ♣♣AK1062

W N E S

♠Q105
♥KJ1073
♦Q96
♣43

Board (40) Av: NS=-380

N-S	E-W	Contract	L	N-S	E-W	IMP	
1	2	4Sx	N-2	CA	300	2	
2	1	4H	W	5	CQ	450	-2

41 ♠1087
♥K5
♦KQ942
♣1082

♠KJ3 ♥Q42
♥♥Q7432 ♥♥A6
♦107 ♦♦653
♣J65 ♣♣AK743

W N E S

♠A965
♥J1098
♦AJ8
♣Q9

Board (41) Av: NS=-10

N-S	E-W	Contract	L	N-S	E-W	IMP	
1	2	2H	E	2	HJ	110	-3
2	1	2D	N	2	CA	90	3

42 ♠987
♥AJ9742
♦J3
♣83

♠6543 ♥AQJ2
♥♥Q103 ♥♥K5
♦52 ♦♦A1064
♣J742 ♣♣AK9

W N E S

♠K10
♥86
♦KQ987
♣Q1065

Board (42) Av: NS=+40

N-S	E-W	Contract	L	N-S	E-W	IMP	
1	2	2NT	E-2	DK	200	4	
2	1	2NT	E	2	D8	120	-4

43 ♠83
♥A864
♦10763
♣KQJ

♠4 ♥AJ96
♥♥K1052 ♥♥973
♦KQ94 ♦♦A852
♣9864 ♣♣102

W N E S

♠KQ10752
♥QJ
♦J
♣A753

Board (43) Av: NS=+300

N-S	E-W	Contract	L	N-S	E-W	IMP	
1	2	4S	S	4	H5	420	3
2	1	2S	S	4	DK	170	-4

44 ♠J8764
♥Q5
♦82
♣J954

♠AK109832 ♥K9
♥♥1097 ♥♥J74
♣A73 ♦♦AJ643
♣♣1082

W N E S

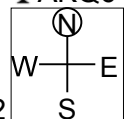
♠AQ10532
♥6
♦KQ5
♣KQ6

Board (44) Av: NS=-60

N-S	E-W	Contract	L	N-S	E-W	IMP	
1	2	5Hx	W-2	D8	300	8	
2	1	4H	W	4	D8	420	-8

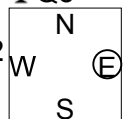
45

♠ 104
 ♥ K104
 ♦ AKJ2
 ♣ AKQ6
 ♠ K65
 ♥ J73
 ♦ 95
 ♣ 97542
 ♠ Q98
 ♥ AQ85
 ♦ 108764
 ♣ 8
 ♠ AJ732
 ♥ 962
 ♦ Q3
 ♣ J103



46

♠ 65
 ♥ 954
 ♦ K107532
 ♣ Q5
 ♠ KJ43
 ♥ KJ1072
 ♦ AJ9
 ♣ J
 ♠ A1082
 ♥ A86
 ♦ Q6
 ♣ A842
 ♠ Q97
 ♥ Q3
 ♦ 84
 ♣ K109763



Board (45) Av: NS=+650

Board (46) Av: NS=-470

N-S	E-W	Contract	L	N-S	E-W	IMP
1	2	3NT N 5 D6		660		0
2	1	3NT N 4 D6		630		-1

N-S	E-W	Contract	L	N-S	E-W	IMP
1	2	4S E 6 D8		480		0
2	1	4S E 5 D8		450		1