

**33** ♠85  
♥AQ7632  
♦AQJ109  
♣

♠AKQ76 ♥2  
♥K4 ♥J1085  
♦86 ♦K42  
♣J853 ♣Q10762

W N E S

♠J10943  
♥9  
♦753  
♣AK94

Board (33) Av: NS=+10

N-S	E-W	Contract	L	N-S	E-W	IMP
1	2	5D	N-2 S2	100	-3	
2	1	3D	N 3 S2	110	3	

**34** ♠J763  
♥AK76  
♦4  
♣J1063

♠K82 ♥Q104  
♥J9543 ♥Q  
♦K92 ♦AQ876  
♣A8 ♣KQ42

W N E S

♠A95  
♥1082  
♦J1053  
♣975

Board (34) Av: NS=-430

N-S	E-W	Contract	L	N-S	E-W	IMP
1	2	3NT	E 5 D3	460	-1	
2	1	3NT	W 3 S3	400	1	

**35** ♠10985  
♥AQ5  
♦43  
♣8632

♠AKQ4 ♥J72  
♥J83 ♥102  
♦105 ♦AJ982  
♣KJ95 ♣1074

W N E S

♠63  
♥K9764  
♦KQ76  
♣AQ

Board (35) Av: NS=-100

N-S	E-W	Contract	L	N-S	E-W	IMP
1	2	3H	S-2 SQ	100	0	
2	1	3H	S-2 SA	100	0	

**36** ♠82  
♥1065  
♦KQJ84  
♣874

♠QJ4 ♥AK109765  
♥AJ2 ♥K4  
♦A102 ♦9  
♣KJ62 ♣AQ3

W N E S

♠3  
♥Q9873  
♦7653  
♣1095

Board (36) Av: NS=-2220

N-S	E-W	Contract	L	N-S	E-W	IMP
1	2	7NT	W 7 DK	2220	0	
2	1	7S	W 7 DK	2210	0	

**37** ♠Q  
♥9853  
♦J84  
♣AJ542

♠10432 ♥987  
♥742 ♥AQJ6  
♦A2 ♦Q106  
♣KQ76 ♣1098

W N E S

♠AKJ65  
♥K10  
♦K9753  
♣3

Board (37) Av: NS=+120

N-S	E-W	Contract	L	N-S	E-W	IMP
1	2	2D	S 3 CK	110	0	
2	1	2D	S 4 DA	130	0	

**38** ♠A73  
♥Q852  
♦Q1063  
♣A6

♠Q842 ♥J6  
♥J109 ♥A64  
♦K5 ♦J742  
♣10985 ♣7432

W N E S

♠K1095  
♥K73  
♦A98  
♣KQJ

Board (38) Av: NS=+420

N-S	E-W	Contract	L	N-S	E-W	IMP
1	2	3NT	S 3 CT	400	-1	
2	1	3NT	S 4 CT	430	0	

**39** ♠AQ8  
♥9732  
♦J762  
♣83

♠104 ♥7653  
♥10865 ♥QJ4  
♦A43 ♦KQ10  
♣J654 ♣Q109

W N E S

♠KJ92  
♥AK  
♦985  
♣AK72

Board (39) Av: NS=+250

N-S	E-W	Contract	L	N-S	E-W	IMP
1	2	3NT	S 3 D4	600	8	
2	1	3NT	S-1 C4	100	-8	

**40** ♠KJ9842  
♥  
♦J53  
♣QJ87

♠763 ♥A  
♥Q9842 ♥A65  
♦A104 ♦K872  
♣95 ♣AK1062

W N E S

♠Q105  
♥KJ1073  
♦Q96  
♣43

Board (40) Av: NS=-510

N-S	E-W	Contract	L	N-S	E-W	IMP
1	2	4Hx	W 4 S8	590	-2	
2	1	4H	W 4 S9	420	3	

**41** ♠1087  
♥K5  
♦KQ942  
♣1082

♠KJ3 ♥Q42  
♥Q7432 ♥A6  
♦107 ♦653  
♣J65 ♣AK743

W N E S

♠A965  
♥J1098  
♦AJ8  
♣Q9

Board (41) Av: NS=+100

N-S	E-W	Contract	L	N-S	E-W	IMP
1	2	1NT	E-1 HJ	100	0	
2	1	2D	N 2 HA	90	0	

**42** ♠987  
♥AJ9742  
♦J3  
♣83

♠6543 ♥AQJ2  
♥Q103 ♥K5  
♦52 ♦A1064  
♣J742 ♣AK9

W N E S

♠K10  
♥86  
♦KQ987  
♣Q1065

Board (42) Av: NS=+90

N-S	E-W	Contract	L	N-S	E-W	IMP
1	2	2NT	E 2 DK	120	-5	
2	1	3NT	E-3 D8	300	5	

**43** ♠83  
♥A864  
♦10763  
♣KQJ

♠4 ♥AJ96  
♥K1052 ♥973  
♦KQ94 ♦A852  
♣9864 ♣102

W N E S

♠KQ10752  
♥QJ  
♦J  
♣A753

Board (43) Av: NS=+380

N-S	E-W	Contract	L	N-S	E-W	IMP
1	2	4Sx	S 4 DK	590	5	
2	1	2S	S 4 DK	170	-5	

**44** ♠J8764  
♥Q5  
♦82  
♣J954

♠AK109832 ♥K9  
♥1097 ♥J74  
♣A73 ♦AJ643  
♣1082

W N E S

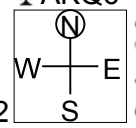
♠AQ10532  
♥6  
♦KQ5  
♣KQ6

Board (44) Av: NS=+460

N-S	E-W	Contract	L	N-S	E-W	IMP
1	2	4S	S 4 HA	620	4	
2	1	5Hx	W-2 S3	300	-4	

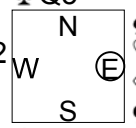
45

♠ 104  
 ♥ K104  
 ♦ AKJ2  
 ♣ AKQ6  
 ♠ K65  
 ♥ J73  
 ♦ 95  
 ♣ 97542  
 ♠ Q98  
 ♥ AQ85  
 ♦ 108764  
 ♣ 8  
 ♠ AJ732  
 ♥ 962  
 ♦ Q3  
 ♣ J103



46

♠ 65  
 ♥ 954  
 ♦ K107532  
 ♣ Q5  
 ♠ KJ43  
 ♥ KJ1072  
 ♦ AJ9  
 ♣ J  
 ♠ A1082  
 ♥ A86  
 ♦ Q6  
 ♣ A842  
 ♠ Q97  
 ♥ Q3  
 ♦ 84  
 ♣ K109763



Board (45) Av: NS=+630

N-S	E-W	Contract	L	N-S	E-W	IMP
1	2	3NT N 4 S9	630			0
2	1	3NT N 4 H5	630			0

Board (46) Av: NS=+50

N-S	E-W	Contract	L	N-S	E-W	IMP
1	2	6S E-1 D8	50			0
2	1	6S E-1 CT	50			0