

**1**

♠K1064  
♥KJ8  
♦J7  
♣KQJ4

♠AJ85 ♠Q97  
♥Q10 ♥9763  
♦9853 ♠A2  
♣1097 ♣8652

♠32  
♥A542  
♦KQ1064  
♣A3

**2**

♠J63  
♥AJ1042  
♦1082  
♣109

♠A8754 ♠Q2  
♥65 ♥KQ73  
♦543 ♠AK76  
♣KQ5 ♣J86

♠K109  
♥98  
♦QJ9  
♣A7432

**3**

♠K10763  
♥10863  
♦5  
♣J83

♠Q ♠5  
♥KQ9 ♥J754  
♦AKQJ4 ♠87632  
♣KQ54 ♣976

♠AJ9842  
♥A2  
♦109  
♣A102

**4**

♠A1096  
♥K2  
♦8765  
♣1054

♠K852 ♠Q43  
♥AJ108 ♥975  
♦J3 ♠KQ102  
♣AKQ ♣862

♠J7  
♥Q643  
♦A94  
♣J973

Board (1)

Contract	N-S	E-W	MP[%]	Tie
3NT S 6	490		94.74	1
3NT N 6	490		94.74	2
3NT S 5	460		52.63	5
3NT N 5	460		52.63	8
3NT S 4	430		7.89	1
3NT N 4	430		7.89	3

Board (2)

Contract	N-S	E-W	MP[%]	Tie
3NT E-2	100		81.58	5
2NT E-2	100		81.58	2
2Hx W-1	100		81.58	1
3S E-1	50		42.11	1
3NT E-1	50		42.11	1
2NT E-1	50		42.11	5
2S W 2		110	21.05	1
2NT E 2		120	13.16	2
2NT E 4		180	5.26	1
2C S-2		200	0.00	1

Board (3)

Contract	N-S	E-W	MP[%]	Tie
4Sx S 4	590		86.84	6
6Dx W-2	500		68.42	1
4S S 4	420		57.89	3
5H E-2	200		42.11	1
5Dx W-1	200		42.11	1
5Dx E-1	200		42.11	1
5D W-1	100		26.32	1
5D E-1	100		26.32	2
5S S-1		50	15.79	1
4Sx S-1		100	10.53	1
4D W 4		130	2.63	2

Board (4)

Contract	N-S	E-W	MP[%]	Tie
3NT W-2	200		97.37	2
3NT W-1	100		86.84	2
1NT W 1		90	78.95	1
2NT E 2		120	73.68	1
1NT W 3		150	68.42	1
1NT W 4		180	60.53	1
1NT E 4		180	60.53	1
3NT W 3		600	42.11	4
3NT E 3		600	42.11	1
3NT W 4		630	13.16	5
3NT E 4		630	13.16	1

5

♠ Q85  
♥ KQ10  
♦ 102  
♣ KQ1098

♠ K1073  
♥ 85  
♦ 53  
♣ 65432

♠ 62  
♥ J76  
♦ AJ9876  
♣ A7

♠ AJ94  
♥ A9432  
♦ KQ4  
♣ J

Board (5)

Contract	N-S	E-W	MP[%]	Tie
3NT S 5	660		84.21	7
4H S 5	650		63.16	1
4H S 4	620		36.84	7
4H N 4	620		36.84	2
5H S-1		100	5.26	1
4H S-1		100	5.26	2

6

♠ Q95  
♥ Q54  
♦ 10765  
♣ KJ4

♠ J87  
♥ K103  
♦ A93  
♣ A1076

♠ A643  
♥ AJ86  
♦ Q84  
♣ 93

♠ K102  
♥ 972  
♦ KJ2  
♣ Q852

Board (6)

Contract	N-S	E-W	MP[%]	Tie
2NT W-1	100		97.37	2
1NT W 1		90	89.47	1
2D N-2		100	84.21	1
2H E 2		110	76.32	1
1H E 2		110	76.32	1
2NT W 2		120	44.74	8
2NT E 2		120	44.74	1
1NT W 2		120	44.74	1
2H E 3		140	15.79	1
2NT W 3		150	7.89	2
2DxxN-2		600	0.00	1

7

♠ Q863  
♥ Q  
♦ KJ543  
♣ 1095

♠ A752  
♥ J9765  
♦ Q82  
♣ 3

♠ K10  
♥ AK1084  
♦ A  
♣ KQJ84

♠ J94  
♥ 32  
♦ 10976  
♣ A762

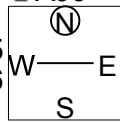
Board (7)

Contract	N-S	E-W	MP[%]	Tie
5H E 6		680	76.32	1
4H W 6		680	76.32	1
4H E 6		680	76.32	8
6H W 6		1430	23.68	2
6H E 6		1430	23.68	8

9

♠Q98  
♥J1093  
♦J85  
♣AJ6

♠K103  
♥AK85  
♦Q976  
♣95



♠A754  
♥Q74  
♦A43  
♣Q104

♠J62  
♥62  
♦K102  
♣K8732

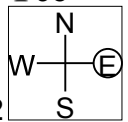
Board (9)

Contract	N-S	E-W	MP[%]	Tie
3NT W-2	200		97.37	1
3NT E-2	200		97.37	1
3NT W-1	100		68.42	4
3NT E-1	100		68.42	4
2NT E-1	100		68.42	1
1S E 2		110	42.11	1
1S E 3		140	34.21	2
2NT W 3		150	23.68	1
2H N-3		150	23.68	1
3NT W 3		600	7.89	2
3NT E 3		600	7.89	2

10

♠KQJ83  
♥J1042  
♦Q3  
♣95

♠A7  
♥Q96  
♦J97  
♣AJ742



♠62  
♥AK853  
♦AK862  
♣3

♠10954  
♥7  
♦1054  
♣KQ1086

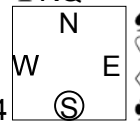
Board (10)

Contract	N-S	E-W	MP[%]	Tie
6H E-3	300		100.00	1
4H E-1	100		94.74	1
4H E 4		620	81.58	4
4H E 5		650	39.47	12
4H E 6		680	5.26	1
4Sx N-3		800	0.00	1

11

♠KJ64  
♥J10953  
♦K2  
♣KQ

♠9  
♥87  
♦A1053  
♣AJ7654



♠A1082  
♥K  
♦QJ876  
♣1092

♠Q753  
♥AQ642  
♦94  
♣83

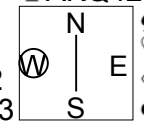
Board (11)

Contract	N-S	E-W	MP[%]	Tie
3H N 4	170		97.37	1
2H N 4	170		97.37	1
3H N 3	140		84.21	2
2H N 3	140		84.21	1
5Cx W-1	100		73.68	1
5D W-1	50		57.89	1
5D E-1	50		57.89	3
5C W-1	50		57.89	1
4S N-1		50	28.95	2
4H N-1		50	28.95	4
5H S-3		150	10.53	1
4Cx W 4		510	5.26	1
5Cx W 5		550	0.00	1

12

♠AQ  
♥AJ543  
♦7  
♣AKQ42

♠107  
♥K7  
♦A1082  
♣J10963



♠986532  
♥62  
♦KJ964  
♣

♠KJ4  
♥Q1098  
♦Q53  
♣875

Board (12)

Contract	N-S	E-W	MP[%]	Tie
6H N 7	1460		97.37	2
6H N 6	1430		89.47	1
5Sx E-5	1100		84.21	1
5H N 7	710		68.42	1
4H N 7	710		68.42	4
5H N 6	680		44.74	1
4H N 6	680		44.74	3
5H N 5	650		26.32	1
4H N 5	650		26.32	2
4H N 4	620		15.79	1
2H N 5	200		10.53	1
3H N 4	170		5.26	1
6Hx N-2		500	0.00	1

13

♠ J107  
♥ A92  
♦ Q653  
♣ Q62

♠ AK85  
♥ J73  
♦ AK94  
♣ K8

♠ 932  
♥ Q104  
♦ 10  
♣ A97543

♠ Q64  
♥ K865  
♦ J872  
♣ J10

Board (13)

Contract	N-S	E-W	MP[%]	Tie
3NT E-2	200		94.74	3
3NT E-1	100		78.95	3
2NT E 2		120	50.00	7
1NT W 2		120	50.00	1
3C W 4		130	23.68	1
3C E 4		130	23.68	1
2NT E 3		150	13.16	2
2NT E 4		180	5.26	1
3NT E 4		630	0.00	1

14

♠ AQJ63  
♥ A32  
♦ 82  
♣ 953

♠ 109842  
♥ K985  
♦ AKQ  
♣ 4

♠ K5  
♥ J6  
♦ 1096  
♣ J108762

♠ 7  
♥ Q1074  
♦ J7543  
♣ AKQ

Board (14)

Contract	N-S	E-W	MP[%]	Tie
3NT S 3	400		97.37	2
2Sx W-2	300		86.84	1
1Sx W-2	300		86.84	1
2S W-4	200		78.95	1
2S W-3	150		68.42	1
2NT N 3	150		68.42	2
2NT N 2	120		52.63	3
1Sx E-1	100		39.47	1
1S W-2	100		39.47	1
1S W-1	50		31.58	1
2S N-1		50	18.42	1
2NT N-1		50	18.42	3
3NT S-3		150	5.26	1
3NT S-4		200	0.00	1

15

♠ 10874  
♥ 875  
♦ 6  
♣ J9876

♠ 6532  
♥ K3  
♦ 9853  
♣ AK10

♠ K9  
♥ A9642  
♦ QJ104  
♣ 43

♠ AQJ  
♥ QJ10  
♦ AK72  
♣ Q52

Board (15)

Contract	N-S	E-W	MP[%]	Tie
3NT S 3	600		100.00	1
1NT S 3	150		94.74	1
2S N 2	110		89.47	1
2H E-2	100		81.58	2
1NT S 1	90		63.16	5
2H E-1	50		47.37	1
1NT S-1		100	36.84	2
1D S-1		100	36.84	1
2H E 2		110	26.32	1
2NT S-2		200	13.16	1
1D S-2		200	13.16	3
2NT S-3		300	0.00	1

**17**

♠ Q86  
♥ QJ72  
♦ Q3  
♣ AQ65

♠ A542  
♥ 986  
♦ 1092  
♣ K98

♠ J103  
♥ K1043  
♦ K87  
♣ 1032

♠ K97  
♥ A5  
♦ AJ654  
♣ J74

Board (17)

Contract	N-S	E-W	MP[%]	Tie
3NT S 5	460		97.37	2
3NT S 4	430		73.68	3
3NT N 4	430		73.68	4
3NT S 3	400		42.11	1
3NT N 3	400		42.11	4
3NT N-1		50	15.79	5
3NT N-2		100	0.00	1

**18**

♠ K87  
♥ 8752  
♦ J10854  
♣ J

♠ Q102  
♥ QJ10  
♦ K9  
♣ 98653

♠ AJ954  
♥ K4  
♦ Q62  
♣ 1042

♠ 63  
♥ A963  
♦ A73  
♣ AKQ7

Board (18)

Contract	N-S	E-W	MP[%]	Tie
4Sx E-2	300		100.00	1
2H S 4	170		94.74	1
1NT S 2	120		89.47	1
3D N 3	110		78.95	1
2H S 2	110		78.95	2
1NT S 1	90		68.42	1
4H N-1		100	50.00	1
3H S-1		100	50.00	2
1NT S-1		100	50.00	3
2S E 2		110	21.05	5
2S E 3		140	5.26	1
3H S-2		200	0.00	1

**19**

♠ K5  
♥  
♦ Q7653  
♣ A76532

♠ 63  
♥ A8732  
♦ A42  
♣ Q98

♠ AQ1074  
♥ K96  
♦ 109  
♣ J104

♠ J982  
♥ QJ1054  
♦ KJ8  
♣ K

Board (19)

Contract	N-S	E-W	MP[%]	Tie
3Cx N 3	470		100.00	1
5D N 5	400		94.74	1
3D S 4	130		86.84	2
1NT N 2	120		76.32	2
3D S 3	110		65.79	1
3C N 3	110		65.79	1
2D S 2	90		57.89	1
Passout			44.74	4
5D S-1		50	23.68	1
3D S-1		50	23.68	2
1NT N-1		50	23.68	1
1NT W 2		120	10.53	1
3NT S-3		150	5.26	1
2H S-4		200	0.00	1

**20**

♠ K4  
♥ Q105  
♦ J8762  
♣ 1097

♠ Q98  
♥ 863  
♦ Q109543  
♣ J

♠ A1053  
♥ AK97  
♦ AK  
♣ KQ6

♠ J762  
♥ J42  
♦  
♣ A85432

Board (20)

Contract	N-S	E-W	MP[%]	Tie
5D W-2	200		97.37	1
3NT E-2	200		97.37	1
5D W-1	100		76.32	1
3NT W-1	100		76.32	1
3NT E-1	100		76.32	4
3NT E 3		600	52.63	3
3NT E 4		630	34.21	4
3NT E 5		660	10.53	5

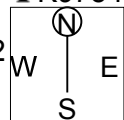
21

♠KQ  
♥A  
♦K8754  
♣K9754

♠83  
♥65  
♦AQJ963  
♣J83

♠A954  
♥J74  
♦102  
♣Q1062

♠J10762  
♥KQ109832  
♦A  
♣A



Board (21)

Contract	N-S	E-W	MP[%]	Tie
4Hx W-2	300		100.00	1
3C N 4	130		94.74	1
4Hx W-1	100		81.58	3
4H W-2	100		81.58	1
4H W-1	50		65.79	2
5C N-1		100	52.63	1
4C N-1		100	52.63	2
2H W 3		140	42.11	1
5D N-2		200	23.68	1
5C N-2		200	23.68	4
3S S-2		200	23.68	1
4H W 4		420	5.26	1
4Hx W 4		590	0.00	1

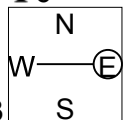
22

♠AQJ3  
♥83  
♦J107632  
♣6

♠K876  
♥Q7654  
♦K9  
♣J7

♠10542  
♥A102  
♦8  
♣Q9852

♠9  
♥KJ9  
♦AQ54  
♣AK1043



Board (22)

Contract	N-S	E-W	MP[%]	Tie
3NT W-1	100		100.00	1
3Sx N-1		100	94.74	1
4Sx N-2		300	89.47	1
4Sx N-3		500	81.58	1
3Sx N-3		500	81.58	1
3NT E 3		600	65.79	4
4H E 4		620	47.37	3
3NT W 4		630	36.84	1
4H E 5		650	23.68	4
3NT W 5		660	5.26	3

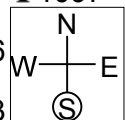
23

♠  
♥Q97542  
♦KQ108  
♣1097

♠Q1093  
♥KJ  
♦A43  
♣A842

♠AK8642  
♥83  
♦J65  
♣QJ

♠J75  
♥A106  
♦972  
♣K653



Board (23)

Contract	N-S	E-W	MP[%]	Tie
3H N 3	140		100.00	1
2S S 2	110		94.74	1
3H N-1		100	81.58	1
2S S-1		100	81.58	3
2NT W 3		150	68.42	1
3H N-2		200	34.21	5
2S S-2		200	34.21	7
2S S-3		300	0.00	1

25

♠ J853  
♥ 764  
♦ K9  
♣ J932

♠ AK962  
♥ Q9  
♦ AQ742  
♣ 6

♠ 4  
♥ AK1083  
♦ 853  
♣ A754

♠ Q107  
♥ J52  
♦ J106  
♣ KQ108

♠ N  
♥ W—E  
♦ S

Board (25)

Contract	N-S	E-W	MP[%]	Tie
6H	E-2	200	97.37	2
5H	E-1	100	81.58	1
4H	E-1	100	81.58	1
3NT	E-1	100	81.58	2
3D	W 5	150	68.42	1
5D	W 5	600	42.11	1
3NT	W 3	600	42.11	3
3NT	E 3	600	42.11	5
4H	E 5	650	15.79	1
3NT	W 5	660	7.89	1
3NT	E 5	660	7.89	1
4NT	E 6	690	0.00	1

26

♠ Q8  
♥ J102  
♦ AQJ84  
♣ 942

♠ A6532  
♥ Q985  
♦ 5  
♣ AJ3

♠ K109  
♥ A64  
♦ 109  
♣ KQ1065

♠ J74  
♥ K73  
♦ K7632  
♣ 87

♠ N  
♥ W—E  
♦ S

Board (26)

Contract	N-S	E-W	MP[%]	Tie
3NT	E-1	100	100.00	1
Passout			94.74	1
2S	W 3	140	89.47	1
3S	W 4	170	78.95	2
3S	E 4	170	78.95	1
2S	W 5	200	65.79	2
4D	N-3	300	57.89	1
4Dx	S-2	500	52.63	1
4S	W 4	620	28.95	8
4S	W 5	650	2.63	1
4S	E 5	650	2.63	1

27

♠ J5  
♥ AKQ10  
♦ KJ54  
♣ 643

♠ Q72  
♥ J3  
♦ 109873  
♣ J72

♠ 9864  
♥ 987642  
♦  
♣ AQ9

♠ AK103  
♥ 5  
♦ AQ62  
♣ K1085

♠ N  
♥ W—E  
♦ S

Board (27)

Contract	N-S	E-W	MP[%]	Tie
3NT	S 6	490	100.00	1
4NT	N 5	460	60.53	1
3NT	S 5	460	60.53	6
3NT	N 5	460	60.53	7
3NT	S 4	430	15.79	3
6D	S-1	50	2.63	2

28

♠ J982  
♥ Q98752  
♦ J  
♣ 108

♠ 75  
♥ K106  
♦ AQ4  
♣ AQ754

♠ AK103  
♥ J4  
♦ K863  
♣ K32

♠ Q64  
♥ A3  
♦ 109752  
♣ J96

♠ N  
♥ W—E  
♦ S

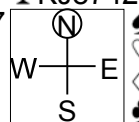
Board (28)

Contract	N-S	E-W	MP[%]	Tie
3NT	W 3	400	100.00	1
3NT	W 5	460	55.26	16
3NT	W 6	490	5.26	3

29

♠ 109  
♥ 9752  
♦ 10  
♣ KJ8742

♠ QJ87 ♠ K6532  
♥ AQ6 ♥ J10  
♦ Q87 ♦ AKJ64  
♣ 953 ♣ 10



♠ A4  
♥ K843  
♦ 9532  
♣ AQ6

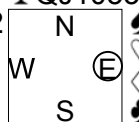
Board (29)

Contract	N-S	E-W	MP[%]	Tie
3S	E 5	200	94.74	3
4S	E 4	620	81.58	2
5S	E 5	650	55.26	1
4S	E 5	650	55.26	7
4S	E 6	680	15.79	7

30

♠ A3  
♥ A  
♦ J9852  
♣ QJ1053

♠ KJ10752 ♠ Q6  
♥ 43 ♥ KJ9872  
♦ 73 ♦ AQ4  
♣ K76 ♣ A9



♠ 984  
♥ Q1065  
♦ K106  
♣ 842

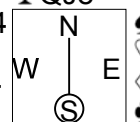
Board (30)

Contract	N-S	E-W	MP[%]	Tie
4H	E-2	100	92.11	3
3H	E-2	100	92.11	1
4H	E-1	50	68.42	3
3H	E-1	50	68.42	2
4Dx	S-1	100	52.63	1
3H	E 3	140	31.58	7
5Cx	S-2	300	7.89	1
4Cx	N-2	300	7.89	1
5Cx	S-3	500	0.00	1

31

♠ 32  
♥ AQJ9853  
♦ Q  
♣ QJ8

♠ Q984 ♠ AJ10  
♥ 1064 ♥ 72  
♦ AJ64 ♦ K1095  
♣ A5 ♣ K972



♠ K765  
♥ K  
♦ 8732  
♣ 10643

Board (31)

Contract	N-S	E-W	MP[%]	Tie
3NT	W-4	200	100.00	1
4D	E-3	150	94.74	1
3H	N 3	140	73.68	3
2H	N 3	140	73.68	4
2H	N 2	110	50.00	2
4D	W-1	50	39.47	2
3H	N-1	100	23.68	4
2S	W 3	140	10.53	1
4D	W 5	150	5.26	1
4S	W 4	420	0.00	1