

**1**

♠6  
♥KJ1092  
♦A863  
♣Q107

♠KQ8  
♥Q6543  
♦KJ105  
♣5

♠A10432  
♥72  
♦J98432  
♣J975  
♥A87  
♦Q94  
♣AK6

W E  
S

**2**

♠K65  
♥J10942  
♦K765  
♣Q

♠A10  
♥73  
♦AQJ2  
♣96542

♠J732  
♥A865  
♦43  
♣AK7

♠Q984  
♥KQ  
♦1098  
♣J1083

W E  
S

**3**

♠AK92  
♥Q3  
♦Q9432  
♣Q2

♠J1087  
♥AK105  
♦106  
♣A64

♠Q5  
♥9762  
♦K87  
♣K985

♠643  
♥J84  
♦AJ5  
♣J1073

W E  
S

**4**

♠K  
♥4  
♦765432  
♣A10642

♠A9863  
♥103  
♦J  
♣Q9853

♠QJ10  
♥98762  
♦K108  
♣KJ

♠7542  
♥AKQJ5  
♦AQ9  
♣7

W E  
S

Board (1)

Contract	N-S	E-W	MP[%]	Tie
3NT N 4	430		100.00	1
4Sx W-2	300		94.74	1
1NT S 4	180		86.84	1
1NT N 4	180		86.84	1
1NT S 3	150		73.68	2
1H W-3	150		73.68	1
2H N 2	110		63.16	1
1H W-2	100		57.89	1
1NT N 1	90		52.63	1
4H S-1		50	39.47	1
3H N-1		50	39.47	2
2D S-1		50	39.47	1
4H N-2		100	23.68	1
3H N-2		100	23.68	1
2S E 2		110	10.53	3
4H N-3		150	0.00	1

Board (2)

Contract	N-S	E-W	MP[%]	Tie
3NT E-5	250		100.00	1
2NT E-4	200		94.74	1
3NT E-3	150		84.21	1
2NT E-3	150		84.21	2
3NT E-2	100		55.26	2
3C E-2	100		55.26	1
2NT W-2	100		55.26	3
2NT E-2	100		55.26	2
3NT W-1	50		28.95	1
3C E-1	50		28.95	1
2C E 2		90	21.05	1
3C W 3		110	15.79	1
2NT E 2		120	10.53	1
2NT W 3		150	5.26	1
3S S-3		300	0.00	1

Board (3)

Contract	N-S	E-W	MP[%]	Tie
3H E-2	200		100.00	1
3D N 3	110		89.47	2
2S N 2	110		89.47	1
3H W-1	100		68.42	2
3H E-1	100		68.42	2
1NT W-1	100		68.42	1
3D N-1		50	47.37	1
2S S-1		50	47.37	1
2S N-1		50	47.37	1
2H W 2		110	36.84	1
3H E 3		140	18.42	4
2H E 3		140	18.42	2
3S N-4		200	0.00	1

Board (4)

Contract	N-S	E-W	MP[%]	Tie
5D S 5	600		100.00	1
2NT N 4	180		94.74	1
3D S 5	150		81.58	3
2D N 5	150		81.58	1
2D S 4	130		65.79	2
2NT N 2	120		55.26	1
1NT S 2	120		55.26	1
2H S 2	110		47.37	1
2S W-1	100		34.21	1
2S E-1	100		34.21	3
4D N-1		100	15.79	1
3NT N-1		100	15.79	1
2NT N-1		100	15.79	1
3H S-2		200	2.63	2

5

♠ 9754  
♥ J9  
♦ 862  
♣ 10973

♠ Q2  
♥ 76  
♦ AKQ1073  
♣ 865

♠ 103  
♥ AQ32  
♦ J54  
♣ AKQJ

♠ AKJ86  
♥ K10854  
♦ 9  
♣ 42

W N E S

Board (5)

Contract	N-S	E-W	MP[%]	Tie
2Sx N 2	670		100.00	1
3NT W-1	50		73.68	1
3NT E-1	50		73.68	8
4D W 5		150	42.11	1
4D E 5		150	42.11	1
3C E 5		150	42.11	1
5D W 5		400	15.79	7

6

♠ 9  
♥ J974  
♦ Q7  
♣ AJ10872

♠ AKJ84  
♥ AQ10  
♦ A1052  
♣ 3

♠ 107632  
♥ 83  
♦ K8  
♣ Q965

♠ Q5  
♥ K652  
♦ J9643  
♣ K4

W N E S

Board (6)

Contract	N-S	E-W	MP[%]	Tie
1S W 6	230		100.00	1
4S W 5	650		94.74	1
5S W 6	680		47.37	2
4S W 6	680		47.37	15
6S W 6	1430		0.00	1

7

♠ J  
♥ AQJ72  
♦ K7  
♣ KQ1065

♠ AKQ53  
♥ K5  
♦ J1032  
♣ 93

♠ 1096  
♥ 86  
♦ A984  
♣ AJ82

♠ 8742  
♥ 10943  
♦ Q65  
♣ 74

W N E S

Board (7)

Contract	N-S	E-W	MP[%]	Tie
4Hx N 4	790		100.00	1
4H N 4	620		94.74	1
4S W-2	200		89.47	1
3H N 3	140		81.58	2
4S W-1	100		65.79	3
3S W-1	100		65.79	1
4H S-1		100	52.63	1
3S W 3		140	44.74	2
3S W 4		170	31.58	3
5Hx S-1		200	18.42	1
4Hx S-1		200	18.42	1
4Hx N-2		500	10.53	1
4S W 4		620	2.63	2

9

♠96  
♥A1074  
♦8532  
♣AJ9

♠KQ732  
♥K  
♦AJ106  
♣753

♠4  
♥J95  
♦Q974  
♣Q10862

♠AJ1085  
♥Q8632  
♦K  
♣K4

(N)

W — E  
S

Board (9)

Contract	N-S	E-W	MP[%]	Tie
4H S 5	450		97.37	2
4H S 4	420		73.68	7
3H S 5	200		50.00	2
3H S 4	170		34.21	3
2H S 4	170		34.21	1
3H S 3	140		21.05	1
4H S-1		50	7.89	3
3H S-1		50	7.89	1

10

♠K63  
♥87643  
♦AJ765  
♣

♠4  
♥KJ52  
♦Q943  
♣Q862

♠AQ10952  
♥A  
♦82  
♣J954

♠J87  
♥Q109  
♦K10  
♣AK1073

(N)

W — E  
S

Board (10)

Contract	N-S	E-W	MP[%]	Tie
3C E-3	300		97.37	1
2S E-3	300		97.37	1
2S E-2	200		73.68	7
2S E-1	100		47.37	3
3H N-1		100	36.84	1
4H N-2		200	26.32	2
3D N-2		200	26.32	1
3D N-3		300	10.53	1
2C S-3		300	10.53	2
2C S-5		500	0.00	1

11

♠83  
♥AK5  
♦KJ42  
♣J942

♠75  
♥1042  
♦A10986  
♣A73

♠Q1092  
♥QJ8763  
♦Q5  
♣Q

♠AKJ64  
♥9  
♦73  
♣K10865

(N)

W — E  
S

Board (11)

Contract	N-S	E-W	MP[%]	Tie
4NT N 4	430		84.21	1
3NT N 4	430		84.21	6
5C S 5	400		44.74	1
3NT N 3	400		44.74	7
4C N-1		50	13.16	1
3NT N-1		50	13.16	3
3NT N-2		100	0.00	1

12

♠J2  
♥KQ92  
♦Q94  
♣A632

♠K875  
♥J  
♦K1085  
♣KQ104

♠AQ4  
♥A1065  
♦AJ76  
♣J5

♠10963  
♥8743  
♦32  
♣987

(N)

W — E  
S

Board (12)

Contract	N-S	E-W	MP[%]	Tie
3D W 5	150		100.00	1
3D W 6	170		94.74	1
5D W 5	400		89.47	1
3NT W 4	430		76.32	2
3NT E 4	430		76.32	2
3NT W 5	460		36.84	6
3NT E 5	460		36.84	5
3NT E 6	490		2.63	2

13

♠KQ984  
♥5  
♦A32  
♣Q1053

♠A53  
♥K98763  
♦96  
♣A8

♠J1076  
♥AQ104  
♦KJ7  
♣J4

♠2  
♥J2  
♦Q10854  
♣K9762

Board (13)

Contract	N-S	E-W	MP[%]	Tie
4H	E-2	200	100.00	1
2C	N 3	110	94.74	1
4C	N-1	100	86.84	2
3H	W 3	140	71.05	3
2H	W 3	140	71.05	1
3H	W 4	170	55.26	2
3H	W 5	200	39.47	2
2H	W 5	200	39.47	2
4H	W 4	620	26.32	1
4H	W 5	650	10.53	5

14

♠J4  
♥9862  
♦AJ6  
♣9543

♠K6  
♥AQ10  
♦10743  
♣AQJ7

♠10875  
♥J7  
♦KQ985  
♣82

♠AQ932  
♥K543  
♦2  
♣K106

Board (14)

Contract	N-S	E-W	MP[%]	Tie
2H	S-1	50	100.00	1
1NT	W 1	90	92.11	2
2H	S-2	100	84.21	1
1NT	W 2	120	73.68	3
3S	S-3	150	42.11	1
3H	S-3	150	42.11	1
3D	E 5	150	42.11	2
2S	S-3	150	42.11	1
2D	E 5	150	42.11	4
2NT	W 4	180	15.79	1
1NT	W 5	210	7.89	2
1NT	W 6	240	0.00	1

15

♠109874  
♥10832  
♦Q63  
♣4

♠J  
♥J7  
♦5  
♣AKQJ97652

♠AQ  
♥Q65  
♦AKJ842  
♣108

♠K6532  
♥AK94  
♦1097  
♣3

Board (15)

Contract	N-S	E-W	MP[%]	Tie
7NTx	E-2	300	100.00	1
6NTx	E-1	100	94.74	1
6NT	E-1	50	81.58	1
6D	E-1	50	81.58	1
6C	W-1	50	81.58	2
5C	W 5	400	68.42	1
5C	W 6	420	60.53	2
5C	W 7	440	52.63	1
3NT	W 6	490	42.11	2
3NT	E 6	490	42.11	1
4Sx	S-2	500	31.58	1
3NT	E 7	520	26.32	1
6C	W 6	920	21.05	1
6C	W 7	940	10.53	3
6NT	W 6	990	0.00	1

17

♠762  
♥A  
♦KJ943  
♣J753

♠AQ93  
♥J6  
♦Q65  
♣KQ64

♠K8  
♥Q8542  
♦A10872  
♣2

♠J1054  
♥K10973  
♦  
♣A1098

W N E S

Board (17)

Contract	N-S	E-W	MP[%]	Tie
4Dx N 4	510		100.00	1
5C E-2	100		86.84	1
4S E-2	100		86.84	3
4S W-1	50		65.79	1
4S E-1	50		65.79	3
5D N-1		50	52.63	1
5Dx N-1		100	42.11	1
5D S-2		100	42.11	2
3S E 3		140	31.58	1
2H S-3		150	26.32	1
5Dx N-2		300	21.05	1
4S E 4		420	7.89	4

18

♠84  
♥AQ9832  
♦K6  
♣J106

♠K6  
♥KJ76  
♦9754  
♣K75

♠AQJ97  
♥54  
♦Q8  
♣A832

♠10532  
♥10  
♦AJ1032  
♣Q94

W N E S

Board (18)

Contract	N-S	E-W	MP[%]	Tie
4H N 4	620		94.74	3
3H N 3	140		65.79	3
2S S 3	140		65.79	1
2H N 3	140		65.79	4
2S S 2	110		42.11	1
4H N-1		100	26.32	1
3H N-1		100	26.32	3
2S S-1		100	26.32	1
4H N-2		200	10.53	1
4S S-3		300	2.63	1
3NT N-3		300	2.63	1

19

♠97  
♥975  
♦KQ542  
♣874

♠KQJ8  
♥  
♦AJ873  
♣QJ109

♠64  
♥AKJ8643  
♦109  
♣63

♠A10532  
♥Q102  
♦6  
♣AK52

W N E S

Board (19)

Contract	N-S	E-W	MP[%]	Tie
6D E-3	300		100.00	1
4H S-3		150	94.74	1
5S W 6		680	86.84	2
5S W 7		710	65.79	2
4S W 7		710	65.79	4
7Hx S-6		1400	47.37	1
6S W 6		1430	31.58	5
6S W 7		1460	10.53	3
7S W 7		2210	0.00	1

20

♠87  
♥53  
♦10952  
♣J8764

♠KQJ3  
♥A764  
♦KQJ  
♣Q3

♠A954  
♥KJ  
♦A764  
♣A102

♠1062  
♥Q10982  
♦83  
♣K95

W N E S

Board (20)

Contract	N-S	E-W	MP[%]	Tie
1NT S 2	120		100.00	1
4H E-1	100		94.74	1
1NT S 1	90		86.84	2
3H W 3		140	57.89	2
3H E 3		140	57.89	1
2S E 3		140	57.89	1
2H W 3		140	57.89	5
1NT E 3		150	31.58	1
1NT S-2		200	21.05	3
1NT S-3		300	5.26	3

21

♠ KJ75  
♥ AK4  
♦ K2  
♣ Q974

♠ Q9432  
♥ Q  
♦ 653  
♣ J865

♠ 6  
♥ J653  
♦ Q1098  
♣ AK103

W N E  
S

♠ A108  
♥ 109872  
♦ AJ74  
♣ 2

Board (21)

Contract	N-S	E-W	MP[%]	Tie
4H N 5	650		92.11	4
3NT N 4	630		78.95	1
4H N 4	620		55.26	8
3NT N 3	600		31.58	1
4H S-1		100	13.16	1
4H N-1		100	13.16	5

22

♠ Q984  
♥ KJ1062  
♦ 10  
♣ KJ10

♠ 84  
♥ K952  
♦ AQ76532  
♣ 752

♠ AKJ1063  
♥ Q97  
♦ 87  
♣ 94

W N E  
S

♠ 752  
♥ A53  
♦ AQJ643  
♣ 8

Board (22)

Contract	N-S	E-W	MP[%]	Tie
4S E-4	400		89.47	1
3NT N 3	400		89.47	4
2S E-3	300		71.05	2
2S E-2	200		63.16	1
3H N 3	140		52.63	2
2S S 3	140		52.63	1
4H N-1		50	28.95	4
3NT N-1		50	28.95	1
3H N-1		50	28.95	1
4H N-2		100	7.89	2
3D S-3		150	0.00	1

23

♠ 1064  
♥ 107  
♦ AQJ542  
♣ 53

♠ QJ8  
♥ Q9643  
♦ K9  
♣ QJ2

♠ 5  
♥ K85  
♦ 10763  
♣ AK874

W N E  
S

♠ AK9732  
♥ AJ2  
♦ 8  
♣ 1096

Board (23)

Contract	N-S	E-W	MP[%]	Tie
3S S 4	170		86.84	3
2S S 4	170		86.84	3
3S S 3	140		55.26	1
2S S 3	140		55.26	5
2S S 2	110		36.84	1
4H W-1	100		26.32	2
3H W-1	100		26.32	1
4S S-1		100	10.53	1
3S S-1		100	10.53	1
2S S-1		100	10.53	1
4S S-2		200	0.00	1

25

♠ Q4  
♥ J1065  
♦ K93  
♣ J1087

♠ KJ108  
♥ A9  
♦ QJ52  
♣ Q42

♠ 765  
♥ K743  
♦ 8764  
♣ 65

♠ A932  
♥ Q82  
♦ A10  
♣ AK93

(N)  
W — E  
S

Board (25)

Contract	N-S	E-W	MP[%]	Tie
3NT S 4	430		100.00	1
3NT N 3	400		94.74	1
2NT N 3	150		65.79	1
1NT S 3	150		65.79	9
1NT S 2	120		26.32	5
1NT S 1	90		7.89	2
3NT S-3		150	0.00	1

26

♠ 10875  
♥ 1043  
♦ K96  
♣ J107

♠ AQ96  
♥ AJ872  
♦ 10  
♣ 943

♠ J  
♥ K95  
♦ AQJ4  
♣ AQ865

♠ K432  
♥ Q6  
♦ 87532  
♣ K2

(N)  
W — E  
S

Board (26)

Contract	N-S	E-W	MP[%]	Tie
6H W-2	200		97.37	2
6H W-1	100		78.95	4
6C E-1	100		78.95	1
2NT W 3		150	63.16	1
4H W 4		620	55.26	2
4H W 5		650	34.21	6
4H W 6		680	13.16	2
3NT E 6		690	5.26	1
6H W 6		1430	0.00	1

27

♠ 1082  
♥ KQ8  
♦ 872  
♣ A1092

♠ AKQJ  
♥ J54  
♦ 965  
♣ K74

♠ 93  
♥ A32  
♦ AKQJ4  
♣ J83

♠ 7654  
♥ 10976  
♦ 103  
♣ Q65

(N)  
W — E  
S

Board (27)

Contract	N-S	E-W	MP[%]	Tie
6D E-2	100		100.00	1
6NT W-1	50		94.74	1
3NT W 4		430	73.68	1
3NT E 4		430	73.68	6
3NT W 5		460	34.21	7
3NT E 5		460	34.21	1
3NT W 6		490	7.89	2
3NT W 7		520	0.00	1

28

♠ 6  
♥ 83  
♦ Q9732  
♣ K8765

♠ A843  
♥ Q1096  
♦ 4  
♣ QJ42

♠ KJ9  
♥ AJ75  
♦ AKJ1086  
♣

♠ Q10752  
♥ K42  
♦ 5  
♣ A1093

(N)  
W — E  
S

Board (28)

Contract	N-S	E-W	MP[%]	Tie
3NT W-2	100		100.00	1
4H W-1	50		89.47	3
2H E 5		200	78.95	1
4H W 4		420	57.89	5
4H E 4		420	57.89	2
4H W 5		450	18.42	2
4H E 5		450	18.42	6

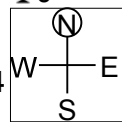
29

♠KQ10762  
♥1087  
♦Q53  
♣J

♠54  
♥Q95  
♦A107  
♣K6532

♠A9  
♥AJ643  
♦2  
♣Q10974

♠J83  
♥K2  
♦KJ9864  
♣A8



Board (29)

Contract	N-S	E-W	MP[%]	Tie
5Dx W-2	500		100.00	1
3S N 3	140		81.58	5
3H S 3	140		81.58	1
2S N 2	110		57.89	3
4D W-1	100		42.11	3
4S N-1		100	26.32	1
4H S-1		100	26.32	1
3S N-1		100	26.32	1
3D W 3	110		13.16	2
4H S-2	200		5.26	1
4S N-3	300		0.00	1

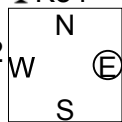
30

♠A54  
♥K874  
♦Q65  
♣K84

♠QJ1083  
♥AJ  
♦KJ94  
♣AJ

♠K762  
♥Q5  
♦A832  
♣1052

♠9  
♥109632  
♦107  
♣Q9763



Board (30)

Contract	N-S	E-W	MP[%]	Tie
2S E-1	50		97.37	1
2C W-1	50		97.37	1
1NT S-1		50	89.47	1
2D E 2		90	84.21	1
1NT S-2		100	76.32	1
1NT N-2		100	76.32	1
2H E 2		110	52.63	2
2D E 3		110	52.63	4
1S E 2		110	52.63	1
2H E 3		140	28.95	1
1S E 3		140	28.95	1
2NT E 3		150	21.05	1
2NT S-4	200		10.53	2
2NT N-4	200		10.53	1
2Dx E 3		280	0.00	1

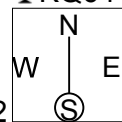
31

♠9  
♥K62  
♦K9764  
♣KQ64

♠75  
♥Q9753  
♦10852  
♣A7

♠AKJ432  
♥A4  
♦AQJ  
♣98

♠Q1086  
♥J108  
♦3  
♣J10532



Board (31)

Contract	N-S	E-W	MP[%]	Tie
4NT N 5	660		97.37	1
3NT N 5	660		97.37	1
3NT N 4	630		89.47	1
4S S 4	620		68.42	7
5S S-1		100	34.21	1
5D S-1		100	34.21	1
4S S-1		100	34.21	2
3NT N-1		100	34.21	2
6S S-2	200		7.89	1
6D S-2	200		7.89	1
3NT N-2		200	7.89	2