

第2回WMSG日本代表選抜試合決勝 Round 1 2011年12月10日(土)

**1**

♠4  
 ♠AKQ5  
 ♠J987  
 ♠KJ96

♠10852  
 ♠7432  
 ♠Q  
 ♠A1043

♠KJ76  
 ♠J10  
 ♠K63  
 ♠Q872

♠AQ93  
 ♠986  
 ♠A10542  
 ♠5

Board (1) Av: NS=+390

N-S	E-W	Contract	L	N-S	E-W	IMP
1	2	3NT S	6 C4	490		3
2	1	3NT N	6 C2	490		3
3	4	2D S	6 H3	170		-6
4	3	3NT N	3 HJ	400		0

**2**

♠976  
 ♠AK7  
 ♠J983  
 ♠J108

♠J104  
 ♠J95  
 ♠K7  
 ♠AQ742

♠KQ852  
 ♠643  
 ♠A102  
 ♠K6

♠A3  
 ♠Q1082  
 ♠Q654  
 ♠953

Board (2) Av: NS=-170

N-S	E-W	Contract	L	N-S	E-W	IMP
1	2	3S E	4 C3	170		0
2	1	3S E	3 H8	140		1
3	4	4S E	4 C3	420		-6
4	3	4S E-1	SA	50		6

**3**

♠AJ9  
 ♠K6  
 ♠KQ83  
 ♠9632

♠1076  
 ♠10973  
 ♠A1096  
 ♠K10

♠KQ52  
 ♠8542  
 ♠542  
 ♠Q8

♠843  
 ♠AQJ  
 ♠J7  
 ♠AJ754

Board (3) Av: NS=+420

N-S	E-W	Contract	L	N-S	E-W	IMP
1	2	3NT N	4 S2	430		0
2	1	3NT N	3 H2	400		-1
3	4	3NT N	3 S2	400		-1
4	3	3NT S	4 HT	430		0

**4**

♠A62  
 ♠K10932  
 ♠KQ432

♠K4  
 ♠854  
 ♠6  
 ♠AKJ10985

♠QJ753  
 ♠6  
 ♠1087  
 ♠7642

♠1098  
 ♠AQJ7  
 ♠AJ95  
 ♠Q3

Board (4) Av: NS=+550

N-S	E-W	Contract	L	N-S	E-W	IMP
1	2	5D N	6 C7	620		2
2	1	4H N	6 C4	680		4
3	4	5Cx W-1	DK	200		-8
4	3	4H N	6 C4	680		4

**5**

♠KJ87642  
 ♠J105  
 ♠1098

♠A85  
 ♠A1093  
 ♠A42  
 ♠KQ4

♠Q107642  
 ♠Q  
 ♠Q93  
 ♠J72

♠KJ93  
 ♠5  
 ♠K876  
 ♠A653

Board (5) Av: NS=+140

N-S	E-W	Contract	L	N-S	E-W	IMP
1	2	3NT W-2	DJ	100		-1
2	1	4Sx E-2	H4	300		4
3	4	3S W-1	DJ	50		-3
4	3	4S W-2	DJ	100		-1

**6**

♠A98765  
 ♠Q2  
 ♠97  
 ♠K108

♠2  
 ♠K97653  
 ♠A5  
 ♠AJ73

♠K103  
 ♠J108  
 ♠K10843  
 ♠65

♠QJ4  
 ♠A4  
 ♠QJ62  
 ♠Q942

Board (6) Av: NS=-90

N-S	E-W	Contract	L	N-S	E-W	IMP
1	2	3H E	4 SQ	170		-2
2	1	3S N-1	HJ	50		1
3	4	4S N-2	HJ	100		0
4	3	3S N-1	HJ	50		1

**7**

♠AJ732  
 ♠K98  
 ♠Q103  
 ♠K2

♠1085  
 ♠106  
 ♠A7  
 ♠J98654

♠KQ9  
 ♠74  
 ♠9852  
 ♠AQ73

♠64  
 ♠AQJ532  
 ♠KJ64  
 ♠10

Board (7) Av: NS=+620

N-S	E-W	Contract	L	N-S	E-W	IMP
1	2	4H S	4 S5	620		0
2	1	4H S	4 C8	620		0
3	4	4H S	4 C3	620		0
4	3	4H S	4 C8	620		0

**8**

♠Q5  
 ♠103  
 ♠J1065  
 ♠J10973

♠A42  
 ♠KJ642  
 ♠K32  
 ♠85

♠KJ3  
 ♠A87  
 ♠AQ97  
 ♠AK6

♠109876  
 ♠Q95  
 ♠84  
 ♠Q42

Board (8) Av: NS=-870

N-S	E-W	Contract	L	N-S	E-W	IMP
1	2	6H E	6 ST	980		-3
2	1	6H E	6 ST	980		-3
3	4	3NT E	7 ST	520		8
4	3	6H W	7 CJ	1010		-4

**9**

♠A8  
 ♠Q984  
 ♠A1094  
 ♠1085

♠K9742  
 ♠K62  
 ♠Q52  
 ♠AQ

♠J6  
 ♠J10  
 ♠J8763  
 ♠9742

♠Q1053  
 ♠A753  
 ♠K  
 ♠KJ63

Board (9) Av: NS=+30

N-S	E-W	Contract	L	N-S	E-W	IMP
1	2	4H N-1	SJ	50		-2
2	1	3H N	3 D3	140		3
3	4	3NT S-2	S6	100		-4
4	3	3H S	3 H2	140		3

**10**

♠92  
 ♠AJ1096542  
 ♠72  
 ♠7

♠Q104  
 ♠Q83  
 ♠AQ9  
 ♠KQ43

♠A875  
 ♠7  
 ♠J64  
 ♠J10862

♠KJ63  
 ♠K  
 ♠K10853  
 ♠A95

Board (10) Av: NS=-50

N-S	E-W	Contract	L	N-S	E-W	IMP
1	2	4H N	2 CJ	110		4
2	1	2H N-1	CJ	100		-2
3	4	4H S-1	CK	100		-2
4	3	4H N-1	CJ	100		-2

**11**

♠942  
 ♠QJ2  
 ♠AK85  
 ♠J98

♠A653  
 ♠8754  
 ♠Q97  
 ♠105

♠KQJ107  
 ♠A6  
 ♠10643  
 ♠Q3

♠8  
 ♠K1093  
 ♠J2  
 ♠AK7642

Board (11) Av: NS=+210

N-S	E-W	Contract	L	N-S	E-W	IMP
1	2	3C S	5 H5	150		-2
2	1	5C S	5 SA	400		5
3	4	3C N	5 D7	150		-2
4	3	4C S	5 H5	150		-2

**12**

♠J9654  
 ♠KJ  
 ♠QJ7  
 ♠KQJ

♠A73  
 ♠763  
 ♠A10642  
 ♠A7

♠K2  
 ♠AQ52  
 ♠K98  
 ♠8632

♠Q108  
 ♠10984  
 ♠53  
 ♠10954

Board (12) Av: NS=-400

N-S	E-W	Contract	L	N-S	E-W	IMP
1	2	3NT W	3 CK	400		0
2	1	3NT W	3 CK	400		0
3	4	3NT W	3 S5	400		0
4	3	3NT W	3 CK	400		0

第2回WMSG日本代表選抜試合決勝 Round 1 2011年12月10日(土)

13

♠AJ8  
♥A54  
♦A1086  
♣642

♠3  
♥10932  
♦K753  
♣KJ93

♠KQ1097542  
♥Q8  
♦J4  
♣Q

♠6  
♥KJ76  
♦Q92  
♣A10875

Board (13) Av: NS=+430

N-S	E-W	Contract	L	N-S	E-W	IMP
1	2	3NT N-1 SK			100	-11
2	1	4Sx E-3 D2	800			9
3	4	4Sx E-3 CA	800			9
4	3	4S E-2 D2	200			-6

14

♠A1084  
♥AQ10643  
♦A107

♠J104  
♥KJ952  
♦975  
♣Q8

♠6532  
♥Q76  
♦KJ  
♣9654

♠AKQ987  
♥3  
♦82  
♣KJ32

Board (14) Av: NS=+480

N-S	E-W	Contract	L	N-S	E-W	IMP
1	2	3NT N 5 DK	460			-1
2	1	3NT N 6 C4	490			0
3	4	3NT S 6 CQ	490			0
4	3	3NT N 6 C2	490			0

15

♠876  
♥KQ2  
♦1087  
♣K652

♠K  
♥J4  
♦KQJ542  
♣Q983

♠J943  
♥83  
♦963  
♣A1074

♠AQ1052  
♥A109765  
♦A  
♣J

Board (15) Av: NS=+670

N-S	E-W	Contract	L	N-S	E-W	IMP
1	2	4S S 6 DK	680			0
2	1	4S S 5 DK	650			-1
3	4	4S S 6 DK	680			0
4	3	4S S 5 DK	650			-1

16

♠K9  
♥A1053  
♦K5  
♣K10754

♠A32  
♥KQ9764  
♦32  
♣93

♠Q10875  
♥J2  
♦AQ1096  
♣6

♠J64  
♥8  
♦J874  
♣AQJ82

Board (16) Av: NS=-170

N-S	E-W	Contract	L	N-S	E-W	IMP
1	2	3C S 4 D3	130			7
2	1	2Hx W 3 C4			870	-12
3	4	3NT N-1 HJ			50	3
4	3	3C N 4 HJ	130			7

17

♠A763  
♥1083  
♦653  
♣KJ8

♠J  
♥AQ642  
♦K82  
♣A1096

♠109854  
♥J5  
♦AQ104  
♣72

♠KQ2  
♥K97  
♦J97  
♣Q543

Board (17) Av: NS=-140

N-S	E-W	Contract	L	N-S	E-W	IMP
1	2	2H W 3 D3			140	0
2	1	2H E 3 C4			140	0
3	4	1NT S-2 SJ			100	1
4	3	2H W 4 D3			170	-1

18

♠Q1083  
♥A753  
♦KQ102  
♣4

♠J974  
♥QJ4  
♦964  
♣AQ6

♠A52  
♥8  
♦J753  
♣K9872

♠K6  
♥K10962  
♦A8  
♣J1053

Board (18) Av: NS=+510

N-S	E-W	Contract	L	N-S	E-W	IMP
1	2	4H S 4 D4	620			3
2	1	4H S 4 S7	620			3
3	4	4H S 4 S7	620			3
4	3	3H S 4 D4	170			-8

19

♠9  
♥9832  
♦K62  
♣J10984

♠KQ8762  
♥A  
♦J10984  
♣2

♠A1043  
♥KQ1074  
♦AQ7  
♣A

♠J5  
♥J65  
♦53  
♣KQ7653

Board (19) Av: NS=-1640

N-S	E-W	Contract	L	N-S	E-W	IMP
1	2	7S W 7 H3			2210	-11
2	1	6S W 6 D2			1430	5
3	4	6S W 7 CJ			1460	5
4	3	6S W 7 CJ			1460	5

20

♠10943  
♥AJ74  
♦J108  
♣74

♠Q65  
♥Q1096  
♦5  
♣K10932

♠K8  
♥832  
♦AKQ972  
♣A6

♠AJ72  
♥K5  
♦643  
♣QJ85

Board (20) Av: NS=-600

N-S	E-W	Contract	L	N-S	E-W	IMP
1	2	3NT E 3 CQ			600	0
2	1	3NT W 3 S3			600	0
3	4	3NT E 3 S7			600	0
4	3	3NT E 3 S2			600	0

第2回WMSG日本代表選抜試合決勝 Round 2 2011年12月10日(土)

**1**

♠Q10962  
 ♠K5 ♠J83  
 ♠A52 ♠J943  
 ♠AQ ♠J65  
 ♠K107543 ♠J92

♠A74  
 ♠1076  
 ♠10874  
 ♠AQ6

Board (1) Av: NS=+120

N-S	E-W	Contract	L	N-S	E-W	IMP
1	2	1NTxW-2	ST	300		5
2	1	3D N 3	C2	110		0
3	4	4S N-1	C3		50	-5
4	3	2S N 2	C2	110		0

**2**

♠Q9654  
 ♠1032 ♠AK87  
 ♠985 ♠AJ2  
 ♠K42 ♠A73  
 ♠KQ85 ♠A1097

♠J  
 ♠K10764  
 ♠J1096  
 ♠A64

Board (2) Av: NS=+10

N-S	E-W	Contract	L	N-S	E-W	IMP
1	2	1NT E 2	DJ		120	-4
2	1	3NT E-1	H6	50		1
3	4	3NT E-1	H4	50		1
4	3	3NT E-1	H5	50		1

**3**

♠532  
 ♠K10 ♠QJ96  
 ♠653 ♠9  
 ♠543 ♠AKQ982  
 ♠A9843 ♠Q10

♠A874  
 ♠AK2  
 ♠1076  
 ♠KJ7

Board (3) Av: NS=-50

N-S	E-W	Contract	L	N-S	E-W	IMP
1	2	3H S-1	SK		50	0
2	1	3H N-1	DA		50	0
3	4	3H S-1	D3		50	0
4	3	3H N-1	DA		50	0

**4**

♠97  
 ♠AKJ94  
 ♠92  
 ♠AJ107

♠Q3 ♠A864  
 ♠1082 ♠Q3  
 ♠AKQJ7 ♠43  
 ♠K95 ♠Q8432

♠KJ1052  
 ♠765  
 ♠10865  
 ♠6

Board (4) Av: NS=+150

N-S	E-W	Contract	L	N-S	E-W	IMP
1	2	3NT W-3	HA	300		4
2	1	4D W-1	HA	100		-2
3	4	3H N-1	D4		100	-6
4	3	3NT W-3	HA	300		4

**5**

♠7  
 ♠A  
 ♠J7654  
 ♠AK10974

♠A1062 ♠QJ8  
 ♠J43 ♠Q10987  
 ♠K93 ♠Q108  
 ♠862 ♠QJ

♠K9543  
 ♠K652  
 ♠A2  
 ♠53

Board (5) Av: NS=+180

N-S	E-W	Contract	L	N-S	E-W	IMP
1	2	3NT N 3	DT	600		9
2	1	3C N 6	H5	170		0
3	4	3C N 5	H7	150		-1
4	3	3NT S-2	H3		200	-9

**6**

♠K7  
 ♠7532  
 ♠Q4  
 ♠AQ1042

♠AQ85 ♠J932  
 ♠K104 ♠J98  
 ♠A103 ♠875  
 ♠853 ♠K97

♠1064  
 ♠AQ6  
 ♠KJ962  
 ♠J6

Board (6) Av: NS=+90

N-S	E-W	Contract	L	N-S	E-W	IMP
1	2	1D W-2	H3	200		3
2	1	1NT S 3	C8	150		2
3	4	2NT N-2	S2		100	-5
4	3	2S E-1	D2	100		0

**7**

♠8652  
 ♠KQ10987  
 ♠A  
 ♠Q4

♠Q3 ♠AK74  
 ♠A52 ♠J64  
 ♠7643 ♠KJ9  
 ♠8632 ♠AKJ

♠J109  
 ♠3  
 ♠Q10852  
 ♠10975

Board (7) Av: NS=-600

N-S	E-W	Contract	L	N-S	E-W	IMP
1	2	3NT W 3	HQ		600	0
2	1	3NT W 3	HK		600	0
3	4	3NT W 3	HK		600	0
4	3	3NT W 3	HQ		600	0

**8**

♠J4  
 ♠AJ7432  
 ♠86  
 ♠853

♠873 ♠AK965  
 ♠K8 ♠65  
 ♠A532 ♠K97  
 ♠AK64 ♠J72

♠Q102  
 ♠Q109  
 ♠QJ104  
 ♠Q109

Board (8) Av: NS=+60

N-S	E-W	Contract	L	N-S	E-W	IMP
1	2	4S E-1	DQ	50		0
2	1	4S E-2	HT	100		1
3	4	4S E-1	DQ	50		0
4	3	4S W-1	D8	50		0

**9**

♠Q97  
 ♠AJ97  
 ♠Q1064  
 ♠Q9

♠85 ♠AKJ42  
 ♠32 ♠Q65  
 ♠AKJ32 ♠985  
 ♠AK42 ♠J5

♠1063  
 ♠K1084  
 ♠7  
 ♠108763

Board (9) Av: NS=-360

N-S	E-W	Contract	L	N-S	E-W	IMP
1	2	3NT E 3	C6		600	-6
2	1	2S E 3	H8		140	6
3	4	3NT W 4	D4		630	-7
4	3	2H N-1	SA		50	7

**10**

♠Q9753  
 ♠AK  
 ♠AKJ1092

♠96 ♠AK102  
 ♠J1084 ♠6  
 ♠109743 ♠QJ652  
 ♠Q3 ♠765

♠QJ87543  
 ♠AK2  
 ♠8  
 ♠84

Board (10) Av: NS=+270

N-S	E-W	Contract	L	N-S	E-W	IMP
1	2	5C N 6	H6	620		8
2	1	3NT N 5	D5	660		9
3	4	4S S-1	D7		100	-9
4	3	4S S-1	CQ		100	-9

**11**

♠KQ9  
 ♠J1065  
 ♠AKJ10  
 ♠Q10

♠107642 ♠A85  
 ♠AQ ♠7432  
 ♠32 ♠Q64  
 ♠9873 ♠AJ5

♠J3  
 ♠K98  
 ♠9875  
 ♠K642

Board (11) Av: NS=+10

N-S	E-W	Contract	L	N-S	E-W	IMP
1	2	1NT N 1	H7		90	2
2	1	2D N-1	H3		50	-2
3	4	2C W-1	DA		50	1
4	3	2NT S-1	S2		50	-2

**12**

♠A432  
 ♠9  
 ♠A6  
 ♠AKJ543

♠KQ1075 ♠J986  
 ♠10 ♠AJ3  
 ♠Q94 ♠J10873  
 ♠10976 ♠Q

♠KQ876542  
 ♠K52  
 ♠82

Board (12) Av: NS=+450

N-S	E-W	Contract	L	N-S	E-W	IMP
1	2	4H S 5	SK	650		5
2	1	4H S 5	SK	650		5
3	4	6C N-1	S7		100	-11
4	3	5C N 5	S8	600		4

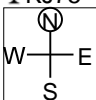
第2回WMSG日本代表選抜試合決勝 Round 2 2011年12月10日(土)

13

♠4  
 ♠KJ1087  
 ♠AQ9532  
 ♠KJ75  
 ♠A98  
 ♠Q6

♠AQ9532  
 ♠A  
 ♠J7  
 ♠10842

♠6  
 ♠KJ1085  
 ♠KQ54  
 ♠A93



Board (13) Av: NS=-620

N-S	E-W	Contract	L	N-S	E-W	IMP
1	2	4S	E 4 HT	620	0	
2	1	4S	E 4 HJ	620	0	
3	4	4S	E 4 DK	620	0	
4	3	4S	E 4 DK	620	0	

14

♠87  
 ♠953  
 ♠A53  
 ♠K1064  
 ♠862

♠K10876  
 ♠A983  
 ♠J7

♠AQJ6  
 ♠Q942  
 ♠Q5  
 ♠943

♠K1042  
 ♠J  
 ♠J72  
 ♠AKQ105



Board (14) Av: NS=+90

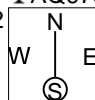
N-S	E-W	Contract	L	N-S	E-W	IMP
1	2	3NT	S-1 S9	50	-4	
2	1	1NT	N 4 H2	180	3	
3	4	1NT	N 2 S2	120	1	
4	3	2C	S 2 S2	90	0	

15

♠5  
 ♠KQJ82  
 ♠985  
 ♠AQ5  
 ♠J6

♠A1043  
 ♠KQ10732  
 ♠K  
 ♠K10

♠976  
 ♠64  
 ♠10862  
 ♠8432



Board (15) Av: NS=-460

N-S	E-W	Contract	L	N-S	E-W	IMP
1	2	4S	W 5 D3	450	0	
2	1	4S	W 5 D3	450	0	
3	4	4S	W 5 HA	450	0	
4	3	4S	W 6 D3	480	-1	

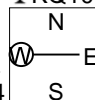
16

♠107543  
 ♠643  
 ♠52  
 ♠KQ10

♠Q6  
 ♠Q5  
 ♠KQ74  
 ♠J9864

♠KJ98  
 ♠KJ7  
 ♠A106  
 ♠A52

♠A2  
 ♠A10982  
 ♠J983  
 ♠73



Board (16) Av: NS=-430

N-S	E-W	Contract	L	N-S	E-W	IMP
1	2	3NT	E-1 HT	100	11	
2	1	3NT	E 3 HT	600	-5	
3	4	3NT	E 3 H8	600	-5	
4	3	3NT	E 3 HT	600	-5	

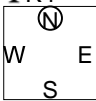
17

♠J86  
 ♠A7432  
 ♠Q  
 ♠K9842  
 ♠J8

♠K94  
 ♠Q10653  
 ♠K4

♠10  
 ♠10876532  
 ♠J  
 ♠Q1052

♠KQ95  
 ♠AJ  
 ♠A7  
 ♠A9763



Board (17) Av: NS=+430

N-S	E-W	Contract	L	N-S	E-W	IMP
1	2	3NT	S 4 D4	430	0	
2	1	3NT	S 4 D4	430	0	
3	4	3NT	S 4 HQ	430	0	
4	3	3NT	S 4 HQ	430	0	

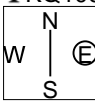
18

♠K743  
 ♠J2  
 ♠AK86  
 ♠Q532  
 ♠J82

♠K742  
 ♠A  
 ♠KQ1065

♠5  
 ♠QJ1053  
 ♠K876  
 ♠973

♠AQ10986  
 ♠9  
 ♠J1094  
 ♠A4



Board (18) Av: NS=+1060

N-S	E-W	Contract	L	N-S	E-W	IMP
1	2	6S	S 6 HK	1430	9	
2	1	4S	S 6 HA	680	-9	
3	4	6S	S 7 D3	1460	9	
4	3	4S	S 6 HA	680	-9	

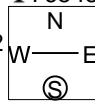
19

♠Q863  
 ♠104  
 ♠AQ10972  
 ♠A642  
 ♠K

♠53  
 ♠Q5  
 ♠76543

♠952  
 ♠KJ8  
 ♠1087  
 ♠QJ109

♠AKJ7  
 ♠64  
 ♠KJ93  
 ♠A82



Board (19) Av: NS=-70

N-S	E-W	Contract	L	N-S	E-W	IMP
1	2	3H	E 4 H4	170	-3	
2	1	3S	S-2 CK	100	-1	
3	4	3H	W-1 DQ	100	5	
4	3	2H	W 2 DQ	110	-1	

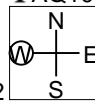
20

♠Q7  
 ♠J6  
 ♠J962  
 ♠K7  
 ♠K8432

♠7  
 ♠109853  
 ♠AQ1095

♠A543  
 ♠AKQ85  
 ♠A64  
 ♠7

♠K10982  
 ♠1043  
 ♠QJ2  
 ♠J6



Board (20) Av: NS=-620

N-S	E-W	Contract	L	N-S	E-W	IMP
1	2	4H	E 4 DQ	620	0	
2	1	4H	E 4 H3	620	0	
3	4	4H	E 4 H6	620	0	
4	3	4H	E 4 DQ	620	0	

第2回WMSG日本代表選抜試合決勝 Round 3 2011年12月10日(土)

**1**

♠A985  
♥J107  
♦AJ7  
♣J82

♠KQ10  
♥Q94  
♦3  
♣AKQ1095

♠63  
♥AK652  
♦Q42  
♣643

♠J742  
♥83  
♦K109865  
♣7

Board (1) Av: NS=-480

N-S	E-W	Contract	L	N-S	E-W	IMP
1	2	4H	E 6 C7	480		0
2	1	4H	E 6 C6	480		0
3	4	4H	E 6 C7	480		0
4	3	4H	W 6 HJ	480		0

**2**

♠9873  
♥A98  
♦J82  
♣A108

♠2  
♥7652  
♦A1096  
♣Q964

♠AKJ1064  
♥Q10  
♦754  
♣73

♠Q5  
♥KJ43  
♦KQ3  
♣KJ52

Board (2) Av: NS=+60

N-S	E-W	Contract	L	N-S	E-W	IMP
1	2	3Sx	E-2 DK	300		6
2	1	1NT	N 3 D4	150		3
3	4	2S	E-2 DK	100		1
4	3	3NT	N-3 SK	300		-8

**3**

♠8754  
♥A9853  
♦Q7  
♣J4

♠A  
♥KJ1064  
♦K84  
♣10987

♠K10932  
♥Q  
♦J103  
♣AK65

♠QJ6  
♥72  
♦A9652  
♣Q32

Board (3) Av: NS=-90

N-S	E-W	Contract	L	N-S	E-W	IMP
1	2	3NT	E 4 D5	630		-11
2	1	3NT	E 2 D5	200		7
3	4	2H	W 3 CJ	140		-2
4	3	3NT	E-2 D3	200		7

**4**

♠K732  
♥AK4  
♦64  
♣Q865

♠QJ1086  
♥1083  
♦Q532  
♣A

♠A9  
♥J972  
♦KJ87  
♣K107

♠54  
♥Q65  
♦A109  
♣J9432

Board (4) Av: NS=+40

N-S	E-W	Contract	L	N-S	E-W	IMP
1	2	3C	N 3 SA	110		2
2	1	3NT	N-2 H7	200		-6
3	4	3C	N 3 SA	110		2
4	3	1NT	N 2 H7	120		2

**5**

♠854  
♥A10  
♦Q642  
♣10873

♠A72  
♥75432  
♦J9  
♣965

♠KJ963  
♥Q6  
♦A103  
♣AKQ

♠Q10  
♥KJ98  
♦K875  
♣J42

Board (5) Av: NS=-240

N-S	E-W	Contract	L	N-S	E-W	IMP
1	2	2S	E 4 D7	170		2
2	1	3NT	E-1 C3	50		7
3	4	4S	E 4 C2	420		-5
4	3	3NT	E 4 D4	430		-5

**6**

♠QJ4  
♥Q85  
♦10753  
♣AKQ

♠103  
♥109742  
♦KQ4  
♣1032

♠A9862  
♥AJ6  
♦A98  
♣J4

♠K75  
♥K3  
♦J62  
♣98765

Board (6) Av: NS=-10

N-S	E-W	Contract	L	N-S	E-W	IMP
1	2	2S	E-1 HK	100		3
2	1	2H	E 2 C3	110		-3
3	4	1NT	N 1 S6	90		3
4	3	2S	E 2 C5	110		-3

**7**

♠J65  
♥Q642  
♦J1063  
♣62

♠K9  
♥AJ73  
♦75  
♣J10853

♠Q1072  
♥105  
♦AK4  
♣AQ74

♠A843  
♥K98  
♦Q982  
♣K9

Board (7) Av: NS=-170

N-S	E-W	Contract	L	N-S	E-W	IMP
1	2	1NT	E 5 H9	210		-1
2	1	4C	W 4 DJ	130		1
3	4	2D	N-2 CJ	200		-1
4	3	1NT	E 3 S4	150		1

**8**

♠KQ86  
♥AQ654  
♦AQ  
♣Q5

♠A973  
♥K987  
♦63  
♣J87

♠J104  
♥J  
♦K9854  
♣9642

♠52  
♥1032  
♦J1072  
♣AK103

Board (8) Av: NS=+170

N-S	E-W	Contract	L	N-S	E-W	IMP
1	2	4H	N-1 C4	50		-6
2	1	4H	N 4 C6	420		6
3	4	4H	N 4 SJ	420		6
4	3	4H	N-2 SJ	100		-7

**9**

♠A9765  
♥765  
♦9  
♣J1063

♠KJ43  
♥10106  
♦K103  
♣AQ52

♠Q1082  
♥A93  
♦A765  
♣K7

♠KQJ84  
♥QJ842  
♣984

Board (9) Av: NS=-60

N-S	E-W	Contract	L	N-S	E-W	IMP
1	2	4S	E 4 HK	620		-11
2	1	4S	E-1 HK	100		4
3	4	4S	W-1 H5	100		4
4	3	4Sx	E-1 HK	200		6

**10**

♠107  
♥52  
♦A106  
♣AJ10764

♠AKQJ5  
♥J106  
♦QJ3  
♣Q9

♠9432  
♥AQ43  
♦842  
♣K3

♠86  
♥K987  
♦K975  
♣852

Board (10) Av: NS=-80

N-S	E-W	Contract	L	N-S	E-W	IMP
1	2	4S	W-1 CA	100		5
2	1	4S	W 4 H5	620		-11
3	4	4S	W-1 H5	100		5
4	3	4S	W-1 H3	100		5

**11**

♠106  
♥K873  
♦Q1092  
♣873

♠84  
♥A942  
♦K83  
♣Q942

♠KJ72  
♥Q106  
♦A64  
♣AK6

♠AQ953  
♥J5  
♦J75  
♣J105

Board (11) Av: NS=-230

N-S	E-W	Contract	L	N-S	E-W	IMP
1	2	1NT	E 3 S5	150		2
2	1	3NT	E 3 S5	430		-5
3	4	3NT	E-1 CJ	50		7
4	3	3NT	E 3 CJ	400		-5

**12**

♠AJ5  
♥4  
♦Q7653  
♣AK72

♠K742  
♥K97  
♦AK  
♣QJ43

♠Q109  
♥A83  
♦J1092  
♣1095

♠863  
♥QJ10652  
♦84  
♣86

Board (12) Av: NS=-80

N-S	E-W	Contract	L	N-S	E-W	IMP
1	2	1NT	W 3 H4	150		-2
2	1	3NT	W-1 D5	50		4
3	4	1NT	W 1 D6	90		0
4	3	1NT	W 2 D3	120		-1

第2回WMSG日本代表選抜試合決勝 Round 3 2011年12月10日(土)

13

♠Q75  
♥K974  
♦Q10432  
♣3

♠A10643  
♥AQ3  
♦AQJ107  
♣K864

♠9  
♥J86  
♦K8765  
♣K864

♠KJ82  
♥1052  
♦AJ9  
♣952

Board (13) Av: NS=-570

N-S	E-W	Contract	L	N-S	E-W	IMP
1	2	6C	W 6 D2	1370	-13	
2	1	5C	W 6 H7	620	-2	
3	4	2C	W 4 D2	130	10	
4	3	2C	W 5 D2	150	9	

14

♠A87  
♥A532  
♦AQ5  
♣Q63

♠942  
♥Q74  
♦97  
♣AJ875

♠KQJ5  
♥1086  
♦K1086  
♣109

♠1063  
♥KJ9  
♦J432  
♣K42

Board (14) Av: NS=+10

N-S	E-W	Contract	L	N-S	E-W	IMP
1	2	1NT	N 1 CT	90	2	
2	1	1NT	N 1 SK	90	2	
3	4	1NT	N-1 SK	50	-2	
4	3	3NT	N-2 SK	100	-3	

15

♠65  
♥84  
♦AQ102  
♣KJ762

♠9843  
♥KJ62  
♦43  
♣Q93

♠AQJ107  
♥1075  
♦97  
♣A85

♠K2  
♥AQ93  
♦KJ865  
♣104

Board (15) Av: NS=-70

N-S	E-W	Contract	L	N-S	E-W	IMP
1	2	3D	S 4 S4	130	5	
2	1	3NT	S-2 S2	200	-4	
3	4	3NT	S-1 S4	100	-1	
4	3	4D	S-1 S4	100	-1	

16

♠974  
♥Q63  
♦J76  
♣QJ105

♠K82  
♥K984  
♦A5  
♣K632

♠AQ10  
♥A1075  
♦942  
♣A84

♠J653  
♥J2  
♦KQ1083  
♣97

Board (16) Av: NS=-440

N-S	E-W	Contract	L	N-S	E-W	IMP
1	2	3NT	E-1 DQ	100	11	
2	1	4H	E 4 DK	620	-5	
3	4	4H	E 4 DK	620	-5	
4	3	4H	W 4 CQ	620	-5	

17

♠10643  
♥KQ9  
♦72  
♣K865

♠KQ72  
♥J76  
♦AKQ543  
♣

♠J95  
♥A852  
♦8  
♣107432

♠A8  
♥1043  
♦J1096  
♣AQJ9

Board (17) Av: NS=-110

N-S	E-W	Contract	L	N-S	E-W	IMP
1	2	3C	S-1 DK	50	2	
2	1	3C	S-1 DA	50	2	
3	4	3S	W 4 D7	170	-2	
4	3	1NT	E 3 DJ	150	-1	

18

♠KQ106  
♥109  
♦532  
♣Q843

♠J872  
♥Q863  
♦A10  
♣AK7

♠3  
♥KJ742  
♦KJ64  
♣1096

♠A954  
♥A5  
♦Q987  
♣J52

Board (18) Av: NS=-330

N-S	E-W	Contract	L	N-S	E-W	IMP
1	2	4H	E 5 D8	450	-3	
2	1	4H	E 5 D8	450	-3	
3	4	3H	E 5 D7	200	4	
4	3	3S	N-2 H2	200	4	

19

♠A2  
♥Q6  
♦K10873  
♣Q1032

♠J10954  
♥A10  
♦A6  
♣KJ74

♠863  
♥J954  
♦J  
♣A9865

♠KQ7  
♥K8732  
♦Q9542  
♣

Board (19) Av: NS=+150

N-S	E-W	Contract	L	N-S	E-W	IMP
1	2	6Dx	N-1 H5	100	-6	
2	1	3D	N 5 S8	150	0	
3	4	5D	N 5 CA	400	6	
4	3	3D	S 5 SJ	150	0	

20

♠108  
♥J  
♦AKJ832  
♣AQJ5

♠AKQJ932  
♥A65  
♦105  
♣9

♠7  
♥K109732  
♦976  
♣K43

♠654  
♥Q84  
♦Q4  
♣108762

Board (20) Av: NS=-490

N-S	E-W	Contract	L	N-S	E-W	IMP
1	2	4S	W 4 DA	620	-4	
2	1	5Cx	S-2 SA	500	0	
3	4	2S	W 4 DA	170	8	
4	3	4H	E 5 DQ	650	-4	

第2回WMSG日本代表選抜試合決勝 Round 4 2011年12月11日(日)

**1**

♠ J1074  
 ♠ 9653  
 ♠ J42  
 ♠ 109

♠ K852 ♠ AQ93  
 ♠ AJ2 ♠ K1074  
 ♠ Q87 ♠ 10  
 ♠ KJ7 ♠ Q653

♠ 6  
 ♠ Q8  
 ♠ AK9653  
 ♠ A842

Board (1) Av: NS=-170

N-S	E-W	Contract	L	N-S	E-W	IMP
1	2	4S	W 4 D2			-6
2	1	4S	W-1 D2	50		6
3	4	4S	W 4 D2		420	-6
4	3	4S	W-2 DJ	100		7

**2**

♠ J52  
 ♠ KQ83  
 ♠ 82  
 ♠ K932

♠ KQ ♠ 10863  
 ♠ J109764 ♠ 2  
 ♠ J ♠ K753  
 ♠ J1087 ♠ A654

♠ A974  
 ♠ A5  
 ♠ AQ10964  
 ♠ Q

Board (2) Av: NS=+440

N-S	E-W	Contract	L	N-S	E-W	IMP
1	2	3NT	N-1 C2		100	-11
2	1	3NT	N 4 H5	630		5
3	4	3NT	N 3 H2	600		4
4	3	3NT	N 4 H2	630		5

**3**

♠ J752  
 ♠ K32  
 ♠ 9  
 ♠ KQJ76

♠ 1086 ♠ AQ3  
 ♠ A76 ♠ 954  
 ♠ AK86 ♠ QJ752  
 ♠ A102 ♠ 53

♠ K94  
 ♠ QJ108  
 ♠ 1043  
 ♠ 984

Board (3) Av: NS=+100

N-S	E-W	Contract	L	N-S	E-W	IMP
1	2	3NT	W-1 CK	100		0
2	1	3NT	W-1 CQ	100		0
3	4	3NT	W-1 CK	100		0
4	3	3NT	W-1 CK	100		0

**4**

♠ Q865  
 ♠ Q1095  
 ♠ 1043  
 ♠ A5

♠ J2 ♠ K97  
 ♠ 8632 ♠ KJ  
 ♠ 96 ♠ AJ52  
 ♠ J10983 ♠ KQ42

♠ A1043  
 ♠ A74  
 ♠ KQ87  
 ♠ 76

Board (4) Av: NS=-50

N-S	E-W	Contract	L	N-S	E-W	IMP
1	2	1NT	S-1 C1		100	-2
2	1	1NT	E 1 S3		90	-1
3	4	1NT	E-1 S3	100		4
4	3	1NT	E 1 D7		90	-1

**5**

♠ J654  
 ♠ AJ10  
 ♠ J9842  
 ♠ 3

♠ AQ92 ♠ K873  
 ♠ K7 ♠ 543  
 ♠ AQ5 ♠ 763  
 ♠ 10854 ♠ 962

♠ 10  
 ♠ Q9862  
 ♠ K10  
 ♠ AKQJ7

Board (5) Av: NS=+510

N-S	E-W	Contract	L	N-S	E-W	IMP
1	2	4H	S 4 C5	620		3
2	1	4H	S 4 C5	620		-3
3	4	3H	S 4 C5	170		-8
4	3	4H	S 4 C5	620		3

**6**

♠ A843  
 ♠ Q9  
 ♠ 98  
 ♠ AK873

♠ 109 ♠ Q76  
 ♠ J8654 ♠ A10732  
 ♠ K654 ♠ QJ7  
 ♠ 62 ♠ J4

♠ KJ52  
 ♠ K  
 ♠ A1032  
 ♠ Q1095

Board (6) Av: NS=+450

N-S	E-W	Contract	L	N-S	E-W	IMP
1	2	4S	N 4 HA	420		-1
2	1	4S	N 4 DQ	420		-1
3	4	3NT	N 6 H3	490		1
4	3	4S	N 5 DQ	450		0

**7**

♠ J9862  
 ♠ A  
 ♠ J1064  
 ♠ AJ9

♠ Q753 ♠ AK4  
 ♠ Q98762 ♠ K10  
 ♠ 53 ♠ A7  
 ♠ 7 ♠ Q65432

♠ 10  
 ♠ J543  
 ♠ KQ982  
 ♠ K108

Board (7) Av: NS=-20

N-S	E-W	Contract	L	N-S	E-W	IMP
1	2	3D	N 4 SK	130		4
2	1	3D	S 4 C7	130		4
3	4	2H	E 3 ST		140	-3
4	3	3D	S-2 C7		200	-5

**8**

♠ Q7542  
 ♠ 2  
 ♠ 103  
 ♠ AJ863

♠ A ♠ 109  
 ♠ AK106 ♠ QJ854  
 ♠ AKJ7 ♠ 952  
 ♠ Q975 ♠ K42

♠ KJ863  
 ♠ 973  
 ♠ Q864  
 ♠ 10

Board (8) Av: NS=-240

N-S	E-W	Contract	L	N-S	E-W	IMP
1	2	4H	W 5 S2		450	-5
2	1	4Sx	S-1 HA		100	4
3	4	4H	E 5 H2		450	-5
4	3	6H	W-1 CA	50		7

**9**

♠ K85  
 ♠ 108732  
 ♠ 75  
 ♠ 852

♠ 9 ♠ Q742  
 ♠ AQJ ♠ 5  
 ♠ KJ10864 ♠ AQ92  
 ♠ KJ6 ♠ 10943

♠ AJ1063  
 ♠ K964  
 ♠ 3  
 ♠ AQ7

Board (9) Av: NS=-490

N-S	E-W	Contract	L	N-S	E-W	IMP
1	2	5D	W 5 H2	600		-3
2	1	5D	W 5 SK	600		-3
3	4	5D	W 5 S3	600		-3
4	3	4D	W 5 S5	150		8

**10**

♠ 952  
 ♠ 3  
 ♠ K107  
 ♠ Q109762

♠ KJ3 ♠ AQ1064  
 ♠ K8764 ♠ A9  
 ♠ QJ ♠ 8632  
 ♠ AK8 ♠ 43

♠ 87  
 ♠ QJ1052  
 ♠ A954  
 ♠ J5

Board (10) Av: NS=-630

N-S	E-W	Contract	L	N-S	E-W	IMP
1	2	4S	E 5 CJ	650		-1
2	1	4S	E 4 HQ	620		0
3	4	4S	W 4 H2	620		0
4	3	4S	W 4 H3	620		0

**11**

♠ 2  
 ♠ Q107  
 ♠ AK632  
 ♠ Q1073

♠ 1096 ♠ QJ543  
 ♠ A86 ♠ K95  
 ♠ QJ1085 ♠ 74  
 ♠ KJ ♠ A54

♠ AK87  
 ♠ J432  
 ♠ 9  
 ♠ 9862

Board (11) Av: NS=-70

N-S	E-W	Contract	L	N-S	E-W	IMP
1	2	3C	S 3 CK	110		5
2	1	3H	S-1 DQ		50	1
3	4	2S	E-1 D9		50	3
4	3	1NTxw	3 C2		380	-7

**12**

♠ QJ92  
 ♠ 986  
 ♠ Q84  
 ♠ J109

♠ A10 ♠ K8543  
 ♠ 74 ♠ 52  
 ♠ J975 ♠ 632  
 ♠ Q8753 ♠ A62

♠ 76  
 ♠ AKQJ103  
 ♠ AK10  
 ♠ K4

Board (12) Av: NS=+650

N-S	E-W	Contract	L	N-S	E-W	IMP
1	2	3NT	N 5 S4	660		0
2	1	3NT	N 5 S3	660		0
3	4	4H	N 5 H6	650		0
4	3	4H	S 4 C3	620		-1

第2回WMSG日本代表選抜試合決勝 Round 4 2011年12月11日(日)

**13**

♠KJ76  
 ♠984  
 ♠QJ10  
 ♠Q106

♠Q1092  
 ♠K53  
 ♠K85  
 ♠J54

♠8543  
 ♠AQJ  
 ♠72  
 ♠K987

Board (13) Av: NS=+110

N-S	E-W	Contract	L	N-S	E-W	IMP
1	2	1NT W-1	DQ	100		0
2	1	1NT S 2	C4	120		0
3	4	1NT S 2	ST	120		0
4	3	2D S 2	ST	90		-1

**14**

♠K93  
 ♠J9854  
 ♠103  
 ♠QJ6

♠AQ86  
 ♠A  
 ♠J974  
 ♠10732

♠J1075  
 ♠6  
 ♠Q8652  
 ♠AK8

Board (14) Av: NS=-80

N-S	E-W	Contract	L	N-S	E-W	IMP
1	2	3S E 4	DK	170		-3
2	1	3S E 3	DK	140		-2
3	4	5D E-2	HK	100		5
4	3	4Hx S-1	HA	100		-1

**15**

♠3  
 ♠Q102  
 ♠10764  
 ♠KQ543

♠AKJ86542  
 ♠K  
 ♠Q3  
 ♠98

♠109  
 ♠AJ9653  
 ♠A2  
 ♠1072

Board (15) Av: NS=-450

N-S	E-W	Contract	L	N-S	E-W	IMP
1	2	4S W 5	CK	450		0
2	1	4S W 5	CK	450		0
3	4	4S W 5	CK	450		0
4	3	5S E 5	CA	450		0

**16**

♠QJ1072  
 ♠9864  
 ♠6532

♠865  
 ♠AQ3  
 ♠Q1063  
 ♠KQ7

♠K943  
 ♠2  
 ♠A9752  
 ♠A94

Board (16) Av: NS=-250

N-S	E-W	Contract	L	N-S	E-W	IMP
1	2	4D W-1	H9	100		8
2	1	4Hx S-3	CK	500		-6
3	4	4Hx N-1	S6	100		4
4	3	5Hx S-3	D4	500		-6

**17**

♠KQ  
 ♠KQ10  
 ♠KQJ762  
 ♠54

♠J9  
 ♠AJ8432  
 ♠93  
 ♠982

♠A10763  
 ♠95  
 ♠104  
 ♠QJ76

Board (17) Av: NS=+420

N-S	E-W	Contract	L	N-S	E-W	IMP
1	2	5D N 5	CQ	400		-1
2	1	3NT S 3	H3	400		-1
3	4	5D N 5	CQ	400		-1
4	3	3NT S 5	H3	460		1

**18**

♠AQJ843  
 ♠K  
 ♠732  
 ♠K53

♠95  
 ♠1098432  
 ♠108  
 ♠Q62

♠6  
 ♠QJ5  
 ♠AK65  
 ♠A10984

Board (18) Av: NS=-130

N-S	E-W	Contract	L	N-S	E-W	IMP
1	2	4S N-2	DK	200		-2
2	1	4S N-1	DA	100		1
3	4	4S N-1	DA	100		1
4	3	4S N-1	DA	100		1

**19**

♠AJ3  
 ♠K983  
 ♠K84  
 ♠KJ8

♠Q10874  
 ♠J1072  
 ♠AJ93  
 ♠

♠K52  
 ♠Q5  
 ♠1062  
 ♠A10975

Board (19) Av: NS=-10

N-S	E-W	Contract	L	N-S	E-W	IMP
1	2	2NT N-1	S2	50		-1
2	1	2C N-1	D2	50		-1
3	4	2NT N 2	CT	120		4
4	3	3NT N-1	S2	50		-1

**20**

♠Q9  
 ♠54  
 ♠J642  
 ♠QJ875

♠AJ108  
 ♠Q73  
 ♠5  
 ♠A9642

♠K62  
 ♠AKJ106  
 ♠Q107  
 ♠K10

Board (20) Av: NS=-670

N-S	E-W	Contract	L	N-S	E-W	IMP
1	2	4H E 6	C3	680		0
2	1	4H E 5	DA	650		1
3	4	4H E 6	DK	680		0
4	3	4H E 5	DA	650		1



第2回WMSG日本代表選抜試合決勝 Round 5 2011年12月11日(日)

**1**

♠852  
♥A954  
♦Q2  
♣K832

♠K1096  
♥762  
♦A1054  
♣A5

(N)

♠AJ3  
♥KQJ8  
♦K3  
♣QJ94

♠Q74  
♥103  
♦J9876  
♣1076

Board (1) Av: NS=-450

N-S	E-W	Contract	L	N-S	E-W	IMP
1	2	3NT E 3	D8	400	2	
2	1	3NT E 5	D7	460	0	
3	4	3NT E 6	D7	490	-1	
4	3	3NT E 4	HT	430	1	

**2**

♠32  
♥J103  
♦10972  
♣Q752

♠9765  
♥KQ  
♦Q84  
♣K1083

(N)

♠AKQJ  
♥A52  
♦K65  
♣AJ9

♠1084  
♥98764  
♦AJ3  
♣64

Board (2) Av: NS=+50

N-S	E-W	Contract	L	N-S	E-W	IMP
1	2	6NT E-1	H4	50	0	
2	1	6S E-1	H4	50	0	
3	4	6NT E-1	H8	50	0	
4	3	6NT E-1	H6	50	0	

**3**

♠Q54  
♥J86  
♦KJ2  
♣K752

♠976  
♥742  
♦654  
♣A963

(N)

♠KJ  
♥KQ1093  
♦K1087  
♣84

♠A10832  
♥A5  
♦A93  
♣QJ10

Board (3) Av: NS=+220

N-S	E-W	Contract	L	N-S	E-W	IMP
1	2	2S S 3	D4	140	-2	
2	1	2S S 4	S7	170	-2	
3	4	4S S 4	H2	420	5	
4	3	2S S 3	H2	140	-2	

**4**

♠K6  
♥106  
♦AKJ94  
♣J1042

♠Q85  
♥K543  
♦7  
♣AQ865

(N)

♠J10742  
♥A8  
♦853  
♣K73

♠A93  
♥QJ972  
♦Q1062  
♣9

Board (4) Av: NS=-50

N-S	E-W	Contract	L	N-S	E-W	IMP
1	2	3NT N-1	C3	100	-2	
2	1	3S E 3	C9	140	-3	
3	4	1NT N-1	D6	100	-2	
4	3	3D N 4	D3	130	5	

**5**

♠KJ75  
♥KJ109  
♦J104  
♣85

♠A32  
♥A8763  
♦A87  
♣93

(N)

♠Q84  
♥2  
♦KQ963  
♣10642

♠1096  
♥Q54  
♦52  
♣AKQJ7

Board (5) Av: NS=-50

N-S	E-W	Contract	L	N-S	E-W	IMP
1	2	2D E 3	CK	110	-2	
2	1	2NT N-2	D6	200	-4	
3	4	1NT N-1		100	-2	
4	3	2H W-4	S7	200	6	

**6**

♠6  
♥A107542  
♦AK2  
♣A65

♠QJ95  
♥J63  
♦96  
♣9843

(N)

♠A842  
♥KQ8  
♦QJ87  
♣Q10

♠K1073  
♥9  
♦10543  
♣KJ72

Board (6) Av: NS=+260

N-S	E-W	Contract	L	N-S	E-W	IMP
1	2	2H N 4	DQ	170	-3	
2	1	3NT N 3	D7	400	4	
3	4	2S W-3		300	1	
4	3	2H N 4	DQ	170	-3	

**7**

♠AJ8  
♥Q42  
♦AK1082  
♣A9

♠109754  
♥85  
♦QJ3  
♣J64

(N)

♠K63  
♥AK1093  
♦9  
♣10853

♠Q2  
♥J76  
♦7654  
♣KQ72

Board (7) Av: NS=+460

N-S	E-W	Contract	L	N-S	E-W	IMP
1	2	3NT N 4	HA	630	5	
2	1	3NT N 5	C3	660	5	
3	4	3NT S-1	H8	100	-11	
4	3	3NT N 4	HK	630	5	

**8**

♠7  
♥AKJ105  
♦74  
♣AK832

♠KJ8  
♥Q7432  
♦852  
♣Q7

(N)

♠10965  
♥8  
♦AQJ1093  
♣J5

♠AQ432  
♥96  
♦K6  
♣10964

Board (8) Av: NS=+430

N-S	E-W	Contract	L	N-S	E-W	IMP
1	2	5C N 6	S6	420	0	
2	1	5C N 6	DA	420	0	
3	4	5C N 6	DA	420	0	
4	3	5C N 7	H8	440	0	

**9**

♠Q75  
♥98  
♦Q10953  
♣753

♠K  
♥AK6432  
♦AJ4  
♣AJ9

(N)

♠J8432  
♥J5  
♦K87  
♣Q64

♠A1096  
♥Q107  
♦62  
♣K1082

Board (9) Av: NS=-630

N-S	E-W	Contract	L	N-S	E-W	IMP
1	2	3NT W 4	D9	630	0	
2	1	4H W 4	DT	620	0	
3	4	4H W 4	DT	620	0	
4	3	3NT E 4	C2	630	0	

**10**

♠Q10  
♥K762  
♦J9752  
♣AJ

♠963  
♥AJ109  
♦  
♣987543

(N)

♠A874  
♥Q53  
♦Q843  
♣106

♠KJ52  
♥84  
♦AK106  
♣AK2

Board (10) Av: NS=+620

N-S	E-W	Contract	L	N-S	E-W	IMP
1	2	3NT S 3	C5	600	-1	
2	1	3NT S 4	S6	630	0	
3	4	3NT S 5	C5	660	1	
4	3	3NT S 3	C7	600	-1	

**11**

♠A105  
♥10974  
♦AKQ  
♣Q43

♠KQ32  
♥KJ52  
♦J962  
♣2

(N)

♠J84  
♥A3  
♦10753  
♣10765

♠976  
♥Q86  
♦84  
♣AKJ98

Board (11) Av: NS=+400

N-S	E-W	Contract	L	N-S	E-W	IMP
1	2	3NT S 3	S2	400	0	
2	1	3NT S 3	S8	400	0	
3	4	3NT N 3	S6	400	0	
4	3	3NT N 3	S4	400	0	

**12**

♠82  
♥K6  
♦AQJ10987  
♣Q10

♠4  
♥109754  
♦3  
♣J87432

(N)

♠97  
♥QJ832  
♦542  
♣K96

♠AKQJ10653  
♥A  
♦K6  
♣A5

Board (12) Av: NS=+2220

N-S	E-W	Contract	L	N-S	E-W	IMP
1	2	7NT S 7	HT	2220	0	
2	1	7NT S 7	H9	2220	0	
3	4	7NT S 7	HQ	2220	0	
4	3	7NT S 7	HT	2220	0	

第2回WMSG日本代表選抜試合決勝 Round 5 2011年12月11日(日)

13

♠A10854  
 ♠9  
 ♠KJ53  
 ♠42  
 ♠QJ8652

♠763  
 ♠Q4  
 ♠K7653  
 ♠974

♠KQJ2  
 ♠98762  
 ♠A9  
 ♠AK

Board (13) Av: NS=+870

N-S	E-W	Contract	L	N-S	E-W	IMP
1	2	4S N 6 S6	680			-5
2	1	6S N 6 D3	1430			11
3	4	4S N 6	680			-5
4	3	4S N 6 HQ	680			-5

14

♠QJ82  
 ♠K107  
 ♠J96  
 ♠A652  
 ♠1075

♠A9654  
 ♠Q87  
 ♠74  
 ♠KQ2

♠3  
 ♠K102  
 ♠83  
 ♠AJ98643

Board (14) Av: NS=+70

N-S	E-W	Contract	L	N-S	E-W	IMP
1	2	3NT N-1 S5	50			-3
2	1	3C S 3 S7	110			1
3	4	2D N 3 D2	110			1
4	3	3S E-2 CA	100			1

15

♠95  
 ♠AJ74  
 ♠8  
 ♠86  
 ♠AKJ1075

♠Q10862  
 ♠Q753  
 ♠105  
 ♠Q3

♠K3  
 ♠AKJ4  
 ♠AK9742  
 ♠9

Board (15) Av: NS=-210

N-S	E-W	Contract	L	N-S	E-W	IMP
1	2	4H N-3 CQ	300			-3
2	1	5Sx E-2 HA	300			11
3	4	3NT E 4 S4	430			-6
4	3	4S W 4 DQ	420			-5

16

♠J987  
 ♠K  
 ♠A2  
 ♠AKQ6542  
 ♠1073

♠8654  
 ♠J7  
 ♠AKJ

♠A62  
 ♠J97  
 ♠1098  
 ♠Q862

♠Q10543  
 ♠KQ103  
 ♠3  
 ♠954

Board (16) Av: NS=-630

N-S	E-W	Contract	L	N-S	E-W	IMP
1	2	3NT W 4 CA	630			0
2	1	3NT E 4 S5	630			0
3	4	3NT E 4 S7	630			0
4	3	3NT E 4 S4	630			0

17

♠A9  
 ♠KQ7643  
 ♠9874  
 ♠J6  
 ♠5

♠J  
 ♠AQJ2  
 ♠Q872  
 ♠Q832

♠10852  
 ♠63  
 ♠K109  
 ♠AK74

Board (17) Av: NS=-20

N-S	E-W	Contract	L	N-S	E-W	IMP
1	2	2S W 2 CJ	110			-3
2	1	3H E-1 CA	50			2
3	4	2NT N 2 C4	120			4
4	3	3H E 3 CA	140			-3

18

♠K9  
 ♠AQ2  
 ♠A10863  
 ♠43  
 ♠J104

♠J42  
 ♠AK10982  
 ♠Q6

♠10653  
 ♠K7  
 ♠J65  
 ♠AK53

♠J874  
 ♠Q95  
 ♠Q7  
 ♠9872

Board (18) Av: NS=-110

N-S	E-W	Contract	L	N-S	E-W	IMP
1	2	3D N-2 CK	200			-3
2	1	3S W 3 DA	140			-1
3	4	2H W 3 DA	140			-1
4	3	2S E-1 DQ	50			4

19

♠QJ76  
 ♠10542  
 ♠1063  
 ♠A104  
 ♠972

♠K2  
 ♠QJ753  
 ♠83

♠3  
 ♠AQ9754  
 ♠9  
 ♠AKQ105

♠AK98  
 ♠J8  
 ♠K862  
 ♠J64

Board (19) Av: NS=-490

N-S	E-W	Contract	L	N-S	E-W	IMP
1	2	4H W 5 SQ	650			-4
2	1	4Sx N-3 CQ	500			0
3	4	5H E 5 SA	650			-4
4	3	3C E 5 C5	150			8

20

♠A6  
 ♠KJ8  
 ♠632  
 ♠AK10  
 ♠J432

♠QJ95  
 ♠J92  
 ♠AK107

♠10952  
 ♠AK84  
 ♠7543  
 ♠Q

♠Q743  
 ♠107  
 ♠Q86  
 ♠9865

Board (20) Av: NS=+50

N-S	E-W	Contract	L	N-S	E-W	IMP
1	2	2H E-1 HT	100			2
2	1	1NT N 1 S9	90			1
3	4	1NT N-1 S2	100			-4
4	3	2H E-1 CA	100			2

第2回WMSG日本代表選抜試合決勝 Round 6 2011年12月11日(日)

**1**

♠53  
♥A8542  
♦AK3  
♣K84

♠Q72  
♥K1076  
♦1062  
♣AJ6

♠A  
♥QJ9  
♦Q954  
♣Q7532

♠KJ109864  
♥3  
♦J87  
♣109

Board (1) Av: NS=+150

N-S	E-W	Contract	L	N-S	E-W	IMP
1	2	2S S	3 D2	140		0
2	1	2S S	3 D2	140		0
3	4	2S S	3 D2	140		0
4	3	2S S	4 D2	170		1

**2**

♠1073  
♥Q4  
♦KQ65  
♣KQJ10

♠AK9  
♥A852  
♦743  
♣543

♠52  
♥J9763  
♦J98  
♣962

♠QJ864  
♥K10  
♦A102  
♣A87

Board (2) Av: NS=+620

N-S	E-W	Contract	L	N-S	E-W	IMP
1	2	4S S	4 C3	620		0
2	1	4S S	4 D3	620		0
3	4	4S S	4 HA	620		0
4	3	4S S	4 HA	620		0

**3**

♠8  
♥Q3  
♦842  
♣AQJ9852

♠QJ107  
♥AK84  
♦K107  
♣K10

♠AK9652  
♥106  
♦AJ953  
♣

♠43  
♥J9752  
♦Q6  
♣7643

Board (3) Av: NS=-1250

N-S	E-W	Contract	L	N-S	E-W	IMP
1	2	6S E	6 C4	1430		-5
2	1	7S E	1 C7	100		16
3	4	6S W	7 S8	1460		-5
4	3	7S E	7 H2	2210		-14

**4**

♠Q108  
♥J9765  
♦A9  
♣K92

♠J973  
♥K  
♦Q10732  
♣AJ6

♠A652  
♥AQ43  
♦K84  
♣83

♠K4  
♥1082  
♦J6  
♣Q10754

Board (4) Av: NS=-330

N-S	E-W	Contract	L	N-S	E-W	IMP
1	2	2S W	4 H5	170		4
2	1	4S W	4 H5	620		-7
3	4	4S W	-1 H2	100		10
4	3	4S W	4 H5	620		-7

**5**

♠K4  
♥AQJ10  
♦A2  
♣AKQ82

♠AJ65  
♥K95  
♦863  
♣1096

♠Q973  
♥8632  
♦KJ9  
♣54

♠1082  
♥74  
♦Q10754  
♣J73

Board (5) Av: NS=+660

N-S	E-W	Contract	L	N-S	E-W	IMP
1	2	3NT N	5 H6	660		0
2	1	3NT N	5 H2	660		0
3	4	3NT N	5 H4	660		0
4	3	3NT N	5 H3	660		0

**6**

♠Q92  
♥43  
♦8542  
♣AQ42

♠K1085  
♥Q107  
♦Q1076  
♣65

♠J43  
♥AKJ962  
♦J93  
♣3

♠A76  
♥85  
♦AK  
♣KJ10987

Board (6) Av: NS=-10

N-S	E-W	Contract	L	N-S	E-W	IMP
1	2	4C S	4 H7	130		4
2	1	5C S	-1 H2	50		-1
3	4	5C S	-1 H7	50		-1
4	3	5C S	-1 H7	50		-1

**7**

♠103  
♥A62  
♦J86  
♣QJ876

♠AK862  
♥Q53  
♦43  
♣943

♠74  
♥98  
♦Q1072  
♣AK1052

♠QJ95  
♥KJ1074  
♦AK95  
♣

Board (7) Av: NS=+180

N-S	E-W	Contract	L	N-S	E-W	IMP
1	2	4H S	4 SA	620		10
2	1	4H S	-2 SA	200		-9
3	4	3H S	3 SK	140		-1
4	3	3H S	3 SA	140		-1

**8**

♠QJ105  
♥KQ82  
♦86  
♣AQ10

♠K9863  
♥J10  
♦9742  
♣J5

♠2  
♥76  
♦AKQJ  
♣K97632

♠A74  
♥A9543  
♦1053  
♣84

Board (8) Av: NS=+280

N-S	E-W	Contract	L	N-S	E-W	IMP
1	2	4H N	4 DK	420		4
2	1	4H S	4 D9	420		4
3	4	2H S	3 D4	140		-4
4	3	2H S	3 CJ	140		-4

**9**

♠AKQJ532  
♥J87  
♦654  
♣

♠10  
♥AQ987  
♦952  
♣AKJ7

♠974  
♥65432  
♦AK106  
♣2

♠86  
♥KJ10  
♦Q43  
♣Q10983

Board (9) Av: NS=-200

N-S	E-W	Contract	L	N-S	E-W	IMP
1	2	4Sx N	-2 DK	300		-3
2	1	4Sx N	-2 C2	300		-3
3	4	4S N	-2 DK	100		3
4	3	4S N	-2 C2	100		3

**10**

♠KJ42  
♥A  
♦J10864  
♣KQ2

♠Q10973  
♥K109  
♦Q7  
♣J43

♠A5  
♥AQ863  
♦AK92  
♣985

♠86  
♥J7542  
♦53  
♣A1076

Board (10) Av: NS=-10

N-S	E-W	Contract	L	N-S	E-W	IMP
1	2	1NT E	2 H4	120		-3
2	1	1NT E	1 H4	90		-2
3	4	1NT E	2 S8	120		-3
4	3	2S W	-3 HA	300		7

**11**

♠10932  
♥J97  
♦9  
♣KJ1072

♠4  
♥AK103  
♦J62  
♣A9643

♠AQ75  
♥Q4  
♦Q1053  
♣Q85

♠KJ86  
♥8652  
♦AK874  
♣

Board (11) Av: NS=-290

N-S	E-W	Contract	L	N-S	E-W	IMP
1	2	3NT E	3 S8	110		5
2	1	3NT E	3 DK	400		-3
3	4	3NTxE	3 D7	550		-6
4	3	2S N	-2 D5	100		5

**12**

♠A8  
♥532  
♦A10954  
♣J106

♠Q10976  
♥98  
♦KQJ3  
♣Q2

♠KJ  
♥K7  
♦86  
♣K987543

♠5432  
♥AQJ1064  
♦72  
♣A

Board (12) Av: NS=+330

N-S	E-W	Contract	L	N-S	E-W	IMP
1	2	4H S	-1 DK	100		-10
2	1	4H S	5 DK	650		8
3	4	3H S	3 DK	140		-5
4	3	4H S	4 DK	620		7

第2回WMSG日本代表選抜試合決勝 Round 6 2011年12月11日(日)

13

♠KQ764  
 ♠6  
 ♠K9642  
 ♠K9

♠J1083  
 ♠1073  
 ♠AQ  
 ♠J832

♠AQJ82  
 ♠108753  
 ♠1065

♠A952  
 ♠K954  
 ♠J  
 ♠AQ74

Board (13) Av: NS=+630

N-S	E-W	Contract	L	N-S	E-W	IMP
1	2	4S N 5 D3	650			1
2	1	4S N 4 D3	620			0
3	4	4S N 4 D2	620			0
4	3	4S N 4 D3	620			0

14

♠J4  
 ♠Q86  
 ♠Q4  
 ♠A65432

♠KQ872  
 ♠1097  
 ♠972  
 ♠J7

♠A1065  
 ♠AJ543  
 ♠A1063

♠93  
 ♠K2  
 ♠KJ85  
 ♠KQ1098

Board (14) Av: NS=-100

N-S	E-W	Contract	L	N-S	E-W	IMP
1	2	5Cx S-2 SK	300			-5
2	1	5Cx S-2 HT	300			-5
3	4	3C N 3 SA	110			5
4	3	4H E-2 CK	100			5

15

♠J76  
 ♠KQ1076  
 ♠42  
 ♠J102

♠Q93  
 ♠A85  
 ♠J1073  
 ♠Q97

♠42  
 ♠42  
 ♠AKQ965  
 ♠K63

♠AK1085  
 ♠J93  
 ♠8  
 ♠A854

Board (15) Av: NS=+20

N-S	E-W	Contract	L	N-S	E-W	IMP
1	2	4D E-1 SA	50			1
2	1	4D E-1 SA	50			1
3	4	5D E-2 SA	100			2
4	3	3D E 3 SA	110			-4

16

♠J8  
 ♠83  
 ♠AQ10962  
 ♠A85

♠AQ93  
 ♠A654  
 ♠J  
 ♠J743

♠K10742  
 ♠KQJ10  
 ♠K85  
 ♠2

♠65  
 ♠972  
 ♠743  
 ♠KQ1096

Board (16) Av: NS=-650

N-S	E-W	Contract	L	N-S	E-W	IMP
1	2	4S E 5 D3	650			0
2	1	4S E 5 D3	650			0
3	4	4S E 5 D3	650			0
4	3	4H W 5 DA	650			0

17

♠Q1082  
 ♠A764  
 ♠J10  
 ♠Q65

♠54  
 ♠K53  
 ♠A643  
 ♠A984

♠AK73  
 ♠1082  
 ♠K5  
 ♠10732

♠J96  
 ♠QJ9  
 ♠Q9872  
 ♠KJ

Board (17) Av: NS=-20

N-S	E-W	Contract	L	N-S	E-W	IMP
1	2	1NT E 1 D7	90			-2
2	1	Passout				1
3	4	Passout				1
4	3	Passout				1

18

♠8742  
 ♠A85  
 ♠6  
 ♠AQ1085

♠KQ965  
 ♠KJ103  
 ♠5  
 ♠942

♠AJ  
 ♠Q4  
 ♠AQJ874  
 ♠J63

♠103  
 ♠9762  
 ♠K10932  
 ♠K7

Board (18) Av: NS=-20

N-S	E-W	Contract	L	N-S	E-W	IMP
1	2	2S W 3 CA	140			-3
2	1	4S W-2 D6	100			3
3	4	4S W-2 D7	100			3
4	3	2S W 3 CA	140			-3

19

♠10862  
 ♠6  
 ♠97  
 ♠AK7643

♠97  
 ♠K107543  
 ♠Q652  
 ♠Q

♠J53  
 ♠J92  
 ♠J4  
 ♠109852

♠AKQ4  
 ♠AQ8  
 ♠AK1083  
 ♠J

Board (19) Av: NS=+70

N-S	E-W	Contract	L	N-S	E-W	IMP
1	2	7S S-1 S9	50			-3
2	1	3NT S 6 H5	490			9
3	4	6D N-1 H2	50			-3
4	3	6C S-2 H7	100			-5

20

♠Q4  
 ♠108542  
 ♠J73  
 ♠984

♠KJ10752  
 ♠K9  
 ♠

♠A8  
 ♠AQ6  
 ♠965  
 ♠AQJ103

♠963  
 ♠J73  
 ♠AKQ10842  
 ♠

Board (20) Av: NS=-1200

N-S	E-W	Contract	L	N-S	E-W	IMP
1	2	7C E 7 DA	2140			-14
2	1	6C E 7 DA	1390			-5
3	4	5C E 7 DA	640			11
4	3	5C E 7 DK	640			11