

1

♠ 9652
♥ 82
♦ 1098765
♣ K

♠ KJ
♥ A43
♦ J4
♣ 1098753

♠ A843
♥ Q10965
♦ AQ42
♣

♠ Q107
♥ KJ7
♦ AKQ32
♣ J6

Board (1) Av: NS=-110

N-S	E-W	Contract	N-S	E-W	IMP
1	2	2H	E 4	170	-2
2	1	5Hx	E-1	100	5
3	4	5Hx	E-1	100	5
4	3	4D	N-1	50	2
9	12	2H	E 5	200	-3
12	9	4D	N-1	50	2
10	11	2H	E 5	200	-3
11	10	5Dx	N-3	500	-9
13	15	2H	E 3	140	-1
15	13	4D	S-1	50	2
14	16	4D	S-2	100	0
16	14	2H	E 5	200	-3

2

♠ AKQ1095
♥ AQJ4
♦ K
♣ 72

♠ 8643
♥ 1096
♦ 5
♣ 109854

♠ 7
♥ 872
♦ Q762
♣ AKQJ6

♠ J2
♥ K53
♦ AJ109843
♣ 3

Board (2) Av: NS=+680

N-S	E-W	Contract	N-S	E-W	IMP
1	2	4S	N 6	680	0
2	1	4S	N 6	680	0
3	4	4S	N 6	680	0
4	3	4S	N 6	680	0
9	12	5Cx	E-3	500	-5
12	9	4S	N 6	680	0
10	11	4S	N 6	680	0
11	10	4S	N 6	680	0
13	15	4S	N 6	680	0
15	13	4S	N 6	680	0
14	16	4S	N 6	680	0
16	14	4S	N 6	680	0

3

♠ Q4
♥ A7
♦ K8543
♣ 9754

♠ AKJ10753
♥ KQ9
♦ Q10
♣ 3

♠ 98
♥ 10843
♦ A97
♣ 10862

♠ 62
♥ J652
♦ J62
♣ AKQJ

Board (3) Av: NS=-210

N-S	E-W	Contract	N-S	E-W	IMP
1	2	3S	W 3	140	2
2	1	4S	W-1	100	7
3	4	3S	W 4	170	1
4	3	4S	W 4	620	-9
9	12	3S	W 4	170	1
12	9	2S	W 5	200	0
10	11	2S	W 3	140	2
11	10	4S	W 4	620	-9
13	15	2S	W 3	140	2
15	13	2S	W 4	170	1
14	16	3S	W 5	200	0
16	14	2S	W 3	140	2

4

♠ AJ8
♥ AJ5
♦ AQ96
♣ 976

♠ KQ5
♥ Q1084
♦ KJ104
♣ Q2

♠ 107
♥ K97632
♦ 72
♣ A53

♠ 96432
♥
♦ 853
♣ KJ1084

Board (4) Av: NS=-20

N-S	E-W	Contract	N-S	E-W	IMP
1	2	3S	S 4	170	5
2	1	3H	E 3	140	-3
3	4	2H	E-1	100	3
4	3	3S	N-2	200	-5
9	12	2H	E 2	110	-3
12	9	3S	S-1	100	-2
10	11	3H	E-1	100	3
11	10	2S	N 4	170	5
13	15	2S	N 2	110	4
15	13	3S	N-1	100	-2
14	16	3H	E 3	140	-3
16	14	4C	S-1	100	-2

5

♠ 106
♥ AQ93
♦ J7643
♣ QJ

♠ Q8
♥ J864
♦ A108
♣ 10874

♠ KJ4
♥ K2
♦ Q92
♣ K9532

♠ A97532
♥ 1075
♦ K5
♣ A6

Board (5) Av: NS=0

N-S	E-W	Contract	N-S	E-W	IMP
1	2	1NT	E 1	90	-3
2	1	2S	S 3	140	4
3	4	1NT	E 2	120	-3
4	3	2D	N 3	110	3
9	12	2S	S 2	110	3
12	9	2S	S-1	100	-3
10	11	1NT	E 3	150	-4
11	10	2S	S 2	110	3
13	15	2S	S 4	170	5
15	13	1NT	E-1	50	2
14	16	2S	S-1	100	-3
16	14	2C	W 2	90	-3

6

♠ 8642
♥ 6532
♦ 953
♣ Q7

♠ Q3
♥ Q87
♦ AKQ10
♣ J965

♠ 109
♥ J1094
♦ J642
♣ K42

♠ AKJ75
♥ AK
♦ 87
♣ A1083

Board (6) Av: NS=+300

N-S	E-W	Contract	N-S	E-W	IMP
1	2	1S	S 4	170	-4
2	1	4S	S 4	420	3
3	4	4S	S 4	420	3
4	3	4S	S 4	420	3
9	12	4S	S 4	420	3
12	9	3S	S 4	170	-4
10	11	4S	S 4	420	3
11	10	4S	S 4	420	3
13	15	1S	S 4	170	-4
15	13	4S	S-1	50	-8
14	16	3D	E-2	200	-3
16	14	1S	S 4	170	-4

7

♠ AKQ
♥ A108
♦ J87
♣ K1042

♠ J10963
♥ 7
♦ A654
♣ AJ7

♠ 72
♥ KJ9543
♦ Q9
♣ Q85

♠ 854
♥ Q62
♦ K1032
♣ 963

Board (7) Av: NS=+60

N-S	E-W	Contract	N-S	E-W	IMP
1	2	1NT	N-1	100	-4
2	1	2H	E 2	110	-5
3	4	1NT	N 2	120	2
4	3	1NT	N 1	90	1
9	12	1NT	N 1	90	1
12	9	1NT	N 1	90	1
10	11	1NT	N 1	90	1
11	10	1NT	N 2	120	2
13	15	1NT	N 3	150	3
15	13	1NT	N-1	100	-4
14	16	1NT	N 2	120	2
16	14	1S	W-1	100	1

8

♠ AJ74
♥ 1054
♦ QJ42
♣ 76

♠ K92
♥ 63
♦ 73
♣ AKQJ52

♠ Q65
♥ KQ82
♦ AK5
♣ 843

♠ 1083
♥ AJ97
♦ 10986
♣ 109

Board (8) Av: NS=-420

N-S	E-W	Contract	N-S	E-W	IMP
1	3	3NT	E 5	460	-1
3	1	3NT	E 4	430	0
2	4	3NT	E 3	400	1
4	2	3NT	E 3	400	1
5	6	3NT	E 3	400	1
6	5	3NT	E 4	430	0
7	8	3NT	E 4	430	0
8	7	3NT	E 5	460	-1
13	16	3NT	E 3	400	1
16	13	6C	W-2	100	11
14	15	3NT	E 4	430	0
15	14	3NT	E 4	430	0

9

♠ J87
♥ 10976
♦ 532
♣ 653

♠ 1096
♥ AJ32
♦ K9
♣ A874

♠ Q53
♥ KQ54
♦ QJ10
♣ Q10

♠ AK42
♥ 8
♦ A876
♣ KJ92

Board (9) Av: NS=-130

N-S	E-W	Contract	N-S	E-W	IMP
1	3	4H W-1	100		6
3	1	4H E 4		620	-10
2	4	3H W 3		140	0
4	2	4H W 4		620	-10
5	6	3H W 3		140	0
6	5	4H W-1	100		6
7	8	4H W-1	100		6
8	7	3H W 3		140	0
13	16	3NT E 3		600	-10
16	13	4Hx W-2	500		12
14	15	3H W 3		140	0
15	14	4H E-2	200		8

10

♠ QJ954
♥ 764
♦ 102
♣ Q97

♠ K3
♥ AJ8
♦ J7653
♣ J108

♠ 72
♥ K932
♦ K84
♣ K642

♠ A1086
♥ Q105
♦ AQ9
♣ A53

Board (10) Av: NS=+50

N-S	E-W	Contract	N-S	E-W	IMP
1	3	2S S 2	110		2
3	1	3S S-1		100	-4
2	4	2S S-1		100	-4
4	2	2S S 2	110		2
5	6	2S S-1		100	-4
6	5	2S S-1		100	-4
7	8	2S S 3	140		3
8	7	2S S 3	140		3
13	16	2S S 2	110		2
16	13	2S S 2	110		2
14	15	2S S 2	110		2
15	14	2S S 2	110		2

11

♠ J93
♥ AJ10
♦ 93
♣ J6543

♠ AQ8
♥ 873
♦ AJ107
♣ AQ7

♠ 4
♥ 965
♦ K86542
♣ 1098

♠ K107652
♥ KQ42
♦ Q
♣ K2

Board (11) Av: NS=+70

N-S	E-W	Contract	N-S	E-W	IMP
1	3	4D E-1	50		-1
3	1	2S S 2	110		1
2	4	3S S 3	140		2
4	2	3S S 3	140		2
5	6	2S S 2	110		1
6	5	5D W-1	50		-1
7	8	3S S-1		50	-3
8	7	2S S 2	110		1
13	16	3D E 3		110	-5
16	13	2S S 2	110		1
14	15	3S S-1		50	-3
15	14	2S S 2	110		1

12

♠ J542
♥ 542
♦ KJ864
♣ 10

♠ Q
♥ Q76
♦ A1093
♣ AKJ62

♠ AK63
♥ 1093
♦ Q72
♣ Q87

♠ 10987
♥ AKJ8
♦ 5
♣ 9543

Board (12) Av: NS=-370

N-S	E-W	Contract	N-S	E-W	IMP
1	3	3NT W 4		430	-2
3	1	3NT W 4		430	-2
2	4	3NT W 3		400	-1
4	2	3NT W 4		430	-2
5	6	3C W 4		130	6
6	5	3NT W 4		430	-2
7	8	3NT W 4		430	-2
8	7	5C W-1	50		9
13	16	3NT W 4		430	-2
16	13	3C W 4		130	6
14	15	3NT W 5		460	-3
15	14	3NT W 5		460	-3

13

♠ 106
♥ K96
♦ 852
♣ K10854

♠ A72
♥ AQ
♦ AQJ10964
♣ J

♠ 9843
♥ J85
♦ K73
♣ Q63

♠ KQJ5
♥ 107432
♦
♣ A972

Board (13) Av: NS=-140

N-S	E-W	Contract	N-S	E-W	IMP
1	3	5D W-1	100		6
3	1	3NT W 3		600	-10
2	4	4D W 5		150	0
4	2	5D W-1	100		6
5	6	5D W-2	200		8
6	5	5D W-1	100		6
7	8	4S E-2	200		8
8	7	3NT E 4		630	-10
13	16	4Sx E-1	200		8
16	13	3NT W 4		630	-10
14	15	3NT W 4		630	-10
15	14	3D W 4		130	0

14

♠ 9864
♥ K6
♦ K102
♣ J876

♠ Q52
♥ QJ974
♦ Q83
♣ K4

♠ AKJ
♥ A8532
♦ 75
♣ 1095

♠ 1073
♥ 10
♦ AJ964
♣ AQ32

Board (14) Av: NS=-200

N-S	E-W	Contract	N-S	E-W	IMP
1	3	5C N-2		100	3
3	1	4H E-1	50		6
2	4	5H E-2	100		7
4	2	4H E 4		420	-6
5	6	4H E 4		420	-6
6	5	4H E 4		420	-6
7	8	3H E 4		170	1
8	7	4H E-1	50		6
13	16	4H E 4		420	-6
16	13	4H E-1	50		6
14	15	5C N-3		150	2
15	14	5Cx N-3		500	-7

15

♠ A3
♥ Q98752
♦ J64
♣ A2

♠ QJ1042
♥
♦ K93
♣ KQ1095

♠ 875
♥ AK3
♦ A10852
♣ 87

♠ K96
♥ J1064
♦ Q7
♣ J643

Board (15) Av: NS=-300

N-S	E-W	Contract	N-S	E-W	IMP
1	4	4S W-1	50		8
4	1	4S W 4		420	-3
2	3	4S W 4		420	-3
3	2	4S W-1	50		8
5	7	4S W-1	50		8
7	5	4S W 4		420	-3
6	8	3S W 3		140	4
8	6	4S W 4		420	-3
9	10	4S W 4		420	-3
10	9	4S W 4		420	-3
11	12	4S W 4		420	-3
12	11	4S W 4		420	-3

16

♠ KJ87
♥ KJ92
♦ J103
♣ 74

♠ Q64
♥ Q10843
♦ 75
♣ KQ9

♠ A102
♥ A
♦ AQ9862
♣ A108

♠ 953
♥ 765
♦ K4
♣ J6532

Board (16) Av: NS=-630

N-S	E-W	Contract	N-S	E-W	IMP
1	4	3NT E 4		630	0
4	1	3NT E 4		630	0
2	3	3NT E 4		630	0
3	2	3NT E 4		630	0
5	7	3NT E 3		600	1
7	5	3NT E 5		660	-1
6	8	3NT E 4		630	0
8	6	3NT E 3		600	1
9	10	3NT E 4		630	0
10	9	3NT W 5		660	-1
11	12	3NT W 5		660	-1
12	11	3NT E 4		630	0

17

♠KQ109832
♥6
♦J106
♣Q6

♠75
♥KQ10942
♦A3
♣1083

♠A4
♥AJ8
♦952
♣AK972

♠J6
♥753
♦KQ874
♣J54

18

♠7
♥KJ76432
♦52
♣Q107

♠Q953
♥9
♦QJ1094
♣862

♠J1062
♥105
♦K86
♣AK95

♠AK84
♥AQ8
♦A73
♣J43

19

♠9873
♥K2
♦965
♣A864

♠K104
♥10964
♦8
♣K9732

♠J652
♥J5
♦AQ742
♣Q5

♠AQ
♥AQ873
♦KJ103
♣J10

20

♠AQ843
♥9872
♦K7
♣A2

♠J1062
♥A643
♦QJ43
♣4

♠975
♥QJ10
♦10862
♣Q65

♠K
♥K5
♦A95
♣KJ109873

Board (17) Av: NS=-390

N-S	E-W	Contract	N-S	E-W	IMP
1	4	5H W-1	50		10
4	1	3NT E 7	520		-4
2	3	3NT E 4	430		-1
3	2	4H W 4	420		-1
5	7	3NT E 5	460		-2
7	5	5H W 5	450		-2
6	8	4H W 4	420		-1
8	6	4H W 4	420		-1
9	10	6NT E-2	100		10
10	9	4H W 4	420		-1
11	12	3NT E 4	430		-1
12	11	4H E 5	450		-2

Board (18) Av: NS=+650

N-S	E-W	Contract	N-S	E-W	IMP
1	4	4H N 5	650		0
4	1	4H N 5	650		0
2	3	4H N 5	650		0
3	2	4H N 5	650		0
5	7	4H N 5	650		0
7	5	4H N 5	650		0
6	8	4H N 5	650		0
8	6	4H N 5	650		0
9	10	4H N 5	650		0
10	9	4H N 5	650		0
11	12	4H N 5	650		0
12	11	4H S 5	650		0

Board (19) Av: NS=+10

N-S	E-W	Contract	N-S	E-W	IMP
1	4	2NT S 3	150		4
4	1	4H S-2	100		-3
2	3	4H S-2	100		-3
3	2	3H S-1	50		-2
5	7	1NT S 1	90		2
7	5	2H S 2	110		3
6	8	2H S-1	50		-2
8	6	3NT N-2	100		-3
9	10	1NT S 3	150		4
10	9	2D E-3	300		7
11	12	4H S-2	100		-3
12	11	3NT N-1	50		-2

Board (20) Av: NS=+620

N-S	E-W	Contract	N-S	E-W	IMP
1	4	3NT N 3	600		-1
4	1	3NT N 4	630		0
2	3	3NT S 4	630		0
3	2	3NT S 4	630		0
5	7	3NT N 3	600		-1
7	5	3NT N 3	600		-1
6	8	3NT S 7	720		3
8	6	3NT N 3	600		-1
9	10	3NT S 4	630		0
10	9	3NT N 6	690		2
11	12	3NT S 4	630		0
12	11	3NT N 3	600		-1

21

♠4
♥Q8
♦Q32
♣KQ87653

♠AJ62
♥K974
♦K76
♣109

♠1095
♥AJ103
♦AJ84
♣J4

♠KQ873
♥652
♦1095
♣A2

22

♠J963
♥J32
♦KJ532
♣3

♠AQ102
♥64
♦1098
♣AQ102

♠K7
♥AQ5
♦Q
♣J987654

♠854
♥K10987
♦A764
♣K

23

♠Q1096
♥754
♦Q102
♣K75

♠A843
♥AKJ82
♦94
♣A3

♠52
♥10963
♦A6
♣Q9864

♠KJ7
♥Q
♦KJ8753
♣J102

24

♠A1096
♥Q64
♦J2
♣K753

♠KQJ73
♥109
♦A97
♣962

♠54
♥AK83
♦K54
♣AJ108

♠82
♥J752
♦Q10863
♣Q4

Board (21) Av: NS=-130

N-S	E-W	Contract	N-S	E-W	IMP
1	4	2H W 3	140		0
4	1	4H W 4	420		-7
2	3	Passout			4
3	2	4H E 4	420		-7
5	7	3H W 5	200		-2
7	5	3H W 4	170		-1
6	8	3H W 3	140		0
8	6	3D W 4	130		0
9	10	4H W-1	50		5
10	9	Passout			4
11	12	4H E-1	50		5
12	11	3H W 4	170		-1

Board (22) Av: NS=-470

N-S	E-W	Contract	N-S	E-W	IMP
5	8	3NT E 7	720		-6
8	5	3NT W-2	200		12
6	7	3NT E 7	720		-6
7	6	3C E 7	190		7
9	11	3NT E 5	660		-5
11	9	4C E 7	190		7
10	12	5C W 6	620		-4
12	10	3NT E 7	720		-6
13	14	3C E 7	190		7
14	13	5C E 6	620		-4
15	16	5C W 6	620		-4
16	15	3C E 6	170		7

Board (23) Av: NS=-280

N-S	E-W	Contract	N-S	E-W	IMP
5	8	4H W-1	100		9
8	5	3H W 5	200		2
6	7	4H W 4	620		-8
7	6	4H W 5	650		-9
9	11	3H W 4	170		3
11	9	3H W 4	170		3
10	12	3H W 3	140		4
12	10	4H W 5	650		-9
13	14	3H W 3	140		4
14	13	4H W-1	100		9
15	16	4H W 5	650		-9
16	15	3H W 4	170		3

Board (24) Av: NS=-120

N-S	E-W	Contract	N-S	E-W	IMP
5	8	3NT E-1	50		5
8	5	3NT E-1	50		5
6	7	3NT E-1	50		5
7	6	3NT E 3	400		-7
9	11	3NT E 3	400		-7
11	9	3NT E-2	100		6
10	12	3NT E 3	400		-7
12	10	3NT E-2	100		6
13	14	3NT E-2	100		6
14	13	3NT E 3	400		-7
15	16	3NT E-1	50		5
16	15	3NT E 3	400		-7

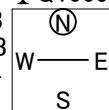
25

♠ 1062
♥ A7
♦ 532
♣ Q10652

♠ J743
♥ Q943
♦ 1064
♣ J9

♠ AKQ8
♥ K108
♦ AQJ8
♣ A4

♠ 95
♥ J652
♦ K97
♣ K873



Board (25) Av: NS=-560

N-S	E-W	Contract	N-S	E-W	IMP
5	8	4S E 5		650	-3
8	5	4S E 5		650	-3
6	7	4S E 5		650	-3
7	6	4S E 4		620	-2
9	11	4S E 5		650	-3
11	9	4S E 5		650	-3
10	12	4S E 5		650	-3
12	10	4S E 4		620	-2
13	14	4S E 5		650	-3
14	13	3NT E-2	200		13
15	16	3NT E-2	200		13
16	15	4S E 5		650	-3

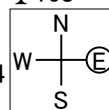
26

♠ 1083
♥ 10985
♦ AQ103
♣ 108

♠ Q6
♥ K3
♦ K9754
♣ Q962

♠ K94
♥ QJ42
♦ J62
♣ KJ3

♠ AJ752
♥ A76
♦ 8
♣ A754



Board (26) Av: NS=+110

N-S	E-W	Contract	N-S	E-W	IMP
5	8	2S S 2	110		0
8	5	2S S 2	110		0
6	7	2S S 2	110		0
7	6	2S S 2	110		0
9	11	2S S 2	110		0
11	9	2S S 2	110		0
10	12	2S S 3	140		1
12	10	3D W-2	200		3
13	14	3S S-1		100	-5
14	13	2S S 2	110		0
15	16	2S S 2	110		0
16	15	2S S 2	110		0

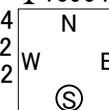
27

♠ AQ8
♥ AQ74
♦ 5
♣ 109643

♠ J104
♥ 9652
♦ J832
♣ A5

♠ 9763
♥ J1083
♦ K97
♣ K2

♠ K52
♥ K
♦ AQ1064
♣ QJ87



Board (27) Av: NS=+450

N-S	E-W	Contract	N-S	E-W	IMP
5	8	3NT N 5	460		0
8	5	3NT N 5	460		0
6	7	3NT S 5	460		0
7	6	3NT N 4	430		-1
9	11	3NT N 5	460		0
11	9	6C S-1		50	-11
10	12	3NT N 4	430		-1
12	10	3NT N 5	460		0
13	14	3NT N 5	460		0
14	13	3NT S 5	460		0
15	16	3NT S 5	460		0
16	15	3NT N 5	460		0

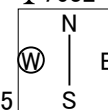
28

♠ J1093
♥ 107
♦ 842
♣ 7632

♠ 864
♥ A43
♦ AJ5
♣ KJ95

♠ AKQ5
♥ K95
♦ Q9
♣ A1084

♠ 72
♥ QJ862
♦ K10763
♣ Q



Board (28) Av: NS=-530

N-S	E-W	Contract	N-S	E-W	IMP
5	8	6S E 6	980		-10
8	5	5NT W 6	490		1
6	7	4NT W 6	490		1
7	6	4NT W 5	460		2
9	11	4NT W 5	460		2
11	9	3NT W 6	490		1
10	12	4NT W 7	520		0
12	10	6NT E 6	990		-10
13	14	6NT W-1		50	11
14	13	4NT W 5	460		2
15	16	4NT W 5	460		2
16	15	4NT W 5	460		2