

**1**

♠7  
♥K97  
♦1087  
♣AQ10865

♠AJ94  
♥J106  
♦AKJ54  
♣2

W N E S

♠108653  
♥AQ82  
♦3  
♣K73

♠KQ2  
♥543  
♦Q962  
♣J94

Board (1) Av: NS=-450

N-S	E-W	Contract	L	N-S	E-W	IMP
1	2	4S	E 5 C4	450	0	
2	1	5S	W 5 CA	450	0	

**2**

♠Q6  
♥J10954  
♦J9  
♣A1072

♠1098754  
♥A32  
♦6  
♣864

W N E S

♠2  
♥87  
♦AK874  
♣KQ953

♠AKJ3  
♥KQ6  
♦Q10532  
♣J

Board (2) Av: NS=+280

N-S	E-W	Contract	L	N-S	E-W	IMP
1	2	4H	S-1 D6	100	-9	
2	1	3NT	S 5 D6	660	9	

**3**

♠AK85  
♥J107  
♦Q952  
♣A4

♠J107  
♥AKQ4  
♦AKJ3  
♣53

W N E S

♠63  
♥93  
♦74  
♣QJ109762

♠Q942  
♥8652  
♦1086  
♣K8

Board (3) Av: NS=-10

N-S	E-W	Contract	L	N-S	E-W	IMP
1	2	1H	S 1 DK	80	3	
2	1	3S	S-2 HK	100	-3	

**4**

♠KJ975  
♥AQ10  
♦A1042  
♣5

♠A6  
♥6  
♦KJ7653  
♣Q1083

W N E S

♠832  
♥KJ532  
♦Q8  
♣KJ9

♠Q104  
♥9874  
♦9  
♣A7642

Board (4) Av: NS=-20

N-S	E-W	Contract	L	N-S	E-W	IMP
1	2	2S	N 4 S3	170	5	
2	1	4S	N-2 S2	200	-5	

**5**

♠Q5  
♥AQ6  
♦J104  
♣Q10932

♠AJ92  
♥J1072  
♦Q53  
♣54

W N E S

♠1084  
♥K5  
♦A98762  
♣86

♠K763  
♥9843  
♦K  
♣AKJ7

Board (5) Av: NS=-150

N-S	E-W	Contract	L	N-S	E-W	IMP
1	2	3NT	N-2 D9	200	-2	
2	1	3NT	N-1 S5	100	2	

**6**

♠3  
♥KQ92  
♦QJ4  
♣QJ975

♠K954  
♥J10  
♦962  
♣AK43

W N E S

♠AQ10  
♥A8764  
♦K105  
♣62

♠J8762  
♥53  
♦A873  
♣108

Board (6) Av: NS=+150

N-S	E-W	Contract	L	N-S	E-W	IMP
1	2	3NT	W-2 CQ	200	2	
2	1	2D	E-1 CT	100	-2	

**7**

♠J105  
♥965  
♦AQ9852  
♣A

♠72  
♥KQJ82  
♦K63  
♣J73

W N E S

♠KQ864  
♥A  
♦107  
♣K10952

♠A93  
♥10743  
♦J4  
♣Q864

Board (7) Av: NS=+200

N-S	E-W	Contract	L	N-S	E-W	IMP
1	2	2D	N 2 HA	90	-3	
2	1	4S	E-3 DJ	300	3	

**8**

♠AKJ763  
♥Q982  
♦A95

♠QJ743  
♥Q4  
♦J53  
♣K42

W N E S

♠K98652  
♥109  
♦104  
♣J76

♠A10  
♥852  
♦AK76  
♣Q1083

Board (8) Av: NS=+730

N-S	E-W	Contract	L	N-S	E-W	IMP
1	2	6H	N 6 S8	980	6	
2	1	4H	N 6 DT	480	-6	

**9**

♠A7  
♥K6  
♦KJ10853  
♣Q97

♠J32  
♥108742  
♦Q  
♣J653

W N E S

♠985  
♥AJ93  
♦96  
♣A1084

♠KQ1064  
♥Q5  
♦A742  
♣K2

Board (9) Av: NS=+450

N-S	E-W	Contract	L	N-S	E-W	IMP
1	2	3NT	N 6 C4	490	1	
2	1	5D	N 5 CA	400	-2	

**10**

♠K  
♥753  
♦AQ52  
♣AJ1032

♠A6543  
♥6  
♦1096  
♣K764

W N E S

♠10987  
♥KQJ109  
♦84  
♣Q9

♠QJ2  
♥A842  
♦KJ73  
♣85

Board (10) Av: NS=-30

N-S	E-W	Contract	L	N-S	E-W	IMP
1	2	1NT	S 3 SK	150	5	
2	1	3NT	S-2 H6	200	-5	

**11**

♠10832  
♥943  
♦AK5  
♣J64

♠765  
♥J1052  
♦1032  
♣A73

W N E S

♠AQ9  
♥AQ  
♦J964  
♣KQ98

♠KJ4  
♥Q876  
♦K87  
♣1052

Board (11) Av: NS=-260

N-S	E-W	Contract	L	N-S	E-W	IMP
1	2	3NT	E 3 D7	400	-4	
2	1	1NT	E 2 H7	120	4	

**12**

♠K82  
♥10764  
♦A10932  
♣J

♠QJ9  
♥K  
♦KQ75  
♣Q10632

W N E S

♠64  
♥A2  
♦J864  
♣K8754

♠A10753  
♥QJ9853  
♦  
♣A9

Board (12) Av: NS=+640

N-S	E-W	Contract	L	N-S	E-W	IMP
1	2	4H	N 4 D6	620	-1	
2	1	4H	S 5 DK	650	0	

**13**

♠ J83  
♥ AK1096  
♦ QJ43  
♣ J

♠ K972  
♥ 73  
♦ AK1087  
♣ 85

♠ Q10654  
♥ 842  
♦  
♣ AK964

♠ A  
♥ QJ5  
♦ 9652  
♣ Q10732

Board (13) Av: NS=+100

N-S	E-W	Contract	L	N-S	E-W	IMP
1	2	4S	W-1 HA	100		0
2	1	4S	W-1 HK	100		0

**14**

♠ Q9872  
♥ 32  
♦ J9  
♣ KJ63

♠ 3  
♥ 864  
♦ AKQ108  
♣ Q754

♠ A1065  
♥ AKJ97  
♦ 764  
♣ A

♠ KJ4  
♥ Q105  
♦ 532  
♣ 10982

Board (14) Av: NS=-480

N-S	E-W	Contract	L	N-S	E-W	IMP
1	2	4H	E 6 CT	480		0
2	1	4H	E 6 CT	480		0

**15**

♠ AJ6542  
♥ 6  
♦ 106  
♣ AK84

♠ Q  
♥ A109  
♦ Q8543  
♣ 9753

♠ K983  
♥ QJ8742  
♦ J  
♣ J10

♠ 107  
♥ K53  
♦ AK972  
♣ Q62

Board (15) Av: NS=+620

N-S	E-W	Contract	L	N-S	E-W	IMP
1	2	4S	N 4 HQ	620		0
2	1	4S	N 4 H4	620		0

**16**

♠ K43  
♥ KQ1065  
♦ A7  
♣ 954

♠ A  
♥ J984  
♦ Q9652  
♣ AQ6

♠ 108762  
♥ A72  
♦ 83  
♣ K87

♠ QJ95  
♥ 3  
♦ KJ104  
♣ J1032

Board (16) Av: NS=+10

N-S	E-W	Contract	L	N-S	E-W	IMP
1	2	1NT	W 1 H6	90		-3
2	1	1NT	E-1 H3	100		3

**17**

♠865  
♥K10  
♦K102  
♣AJ1094

♠KQ107  
♥J3  
♦A96  
♣K862

♠93  
♥98765  
♦85  
♣Q753

♠AJ42  
♥AQ42  
♦QJ743  
♣

Board (17) Av: NS=+180

N-S	E-W	Contract	L	N-S	E-W	IMP
1	2	3NT S 3	SQ	400		6
2	1	5D S-1	SQ		50	-6

**18**

♠1032  
♥J6  
♦AJ103  
♣A1095

♠K875  
♥K1092  
♦64  
♣K43

♠Q9  
♥Q5  
♦Q98752  
♣J72

♠AJ64  
♥A8743  
♦K  
♣Q86

Board (18) Av: NS=+250

N-S	E-W	Contract	L	N-S	E-W	IMP
1	2	3NT N-1	D9		100	-8
2	1	3NT N 3	D6	600		8

**19**

♠A8  
♥Q9732  
♦AK9  
♣K82

♠KJ10653  
♥AJ5  
♦Q62  
♣5

♠Q2  
♥K106  
♦108754  
♣1097

♠974  
♥84  
♦J3  
♣AQJ643

Board (19) Av: NS=+400

N-S	E-W	Contract	L	N-S	E-W	IMP
1	2	3NT N 3	SQ	400		0
2	1	3NT N 3	SQ	400		0

**20**

♠QJ  
♥8542  
♦KQJ43  
♣Q2

♠K104  
♥AK10963  
♦72  
♣43

♠A9652  
♥7  
♦  
♣KJ109875

♠873  
♥QJ  
♦A109865  
♣A6

Board (20) Av: NS=-680

N-S	E-W	Contract	L	N-S	E-W	IMP
1	2	4S W 6	DK		680	0
2	1	4S W 6	DK		680	0

**21**

♠KJ7654  
♥J6  
♦10752  
♣10

♠AQ83  
♥Q73  
♦QJ9  
♣KJ8

♠102  
♥AK5  
♦AK86  
♣9763

♠9  
♥109842  
♦43  
♣AQ542

Board (21) Av: NS=-450

N-S	E-W	Contract	L	N-S	E-W	IMP
1	2	3NT W 5	S6		460	0
2	1	3NT E 4	C4		430	1

**22**

♠3  
♥Q53  
♦J107652  
♣A106

♠K108642  
♥A8  
♦A984  
♣J

♠QJ5  
♥J10972  
♦K3  
♣975

♠A97  
♥K64  
♦Q  
♣KQ8432

Board (22) Av: NS=-10

N-S	E-W	Contract	L	N-S	E-W	IMP
1	2	4C S 4	S8	130		4
2	1	3S W 3	D7		140	-4

**23**

♠3  
♥9873  
♦AK72  
♣10862

♠AQJ10642  
♥J106  
♦109  
♣K

♠K875  
♥4  
♦Q654  
♣A975

♠9  
♥AKQ52  
♦J83  
♣KQJ43

Board (23) Av: NS=-650

N-S	E-W	Contract	L	N-S	E-W	IMP
1	2	4S W 5	DA		650	0
2	1	4S W 5	H7		650	0

**24**

♠7  
♥KQJ1092  
♦843  
♣J63

♠A53  
♥AKQ10762  
♦A98

♠AQ109852  
♥8  
♦J5  
♣Q105

♠KJ643  
♥764  
♦9  
♣K742

Board (24) Av: NS=-690

N-S	E-W	Contract	L	N-S	E-W	IMP
1	2	4S E 5	H4		450	6
2	1	6D E 6	S7		920	-6

**25**

♠J52  
♥K987  
♦97  
♣AKQ9

♠87  
♥Q10653  
♦QJ2  
♣864

♠A943  
♥A  
♦K10864  
♣J73

♠KQ106  
♥J42  
♦A53  
♣1052

Board (25) Av: NS=+110

N-S	E-W	Contract	L	N-S	E-W	IMP
1	2	2S S 2	DQ	110		0
2	1	2S S 2	DQ	110		0

**26**

♠AKJ3  
♥Q754  
♦AK8  
♣83

♠8642  
♥K82  
♦J  
♣AQ1076

♠Q  
♥AJ96  
♦Q96542  
♣J9

♠10975  
♥103  
♦1073  
♣K542

Board (26) Av: NS=-210

N-S	E-W	Contract	L	N-S	E-W	IMP
1	2	3S S-3	DJ		300	-3
2	1	3D E 3	HT		110	3

**27**

♠QJ9765  
♥1076  
♦QJ8  
♣4

♠K8  
♥KQ8  
♦K1062  
♣KQJ6

♠104  
♥J9532  
♦753  
♣A98

♠A32  
♥A4  
♦A94  
♣107532

Board (27) Av: NS=+140

N-S	E-W	Contract	L	N-S	E-W	IMP
1	2	3S S 3	HK	140		0
2	1	3S S 3	HK	140		0

**28**

♠AJ94  
♥QJ4  
♦K84  
♣764

♠K852  
♥K852  
♦AJ76  
♣2

♠Q107  
♥A10763  
♦Q952  
♣10

♠63  
♥9  
♦103  
♣AKQJ9853

Board (28) Av: NS=+340

N-S	E-W	Contract	L	N-S	E-W	IMP
1	2	4NT N 4	D5	630		7
2	1	4H E-1	CK		50	-7

**29**

♠A2  
♥K  
♦AK10985  
♣J932

♠95  
♥J10754  
♦42  
♣K1065

♠Q1063  
♥Q98  
♦QJ3  
♣AQ4

♠KJ874  
♥A632  
♦76  
♣87

Board (29) Av: NS=+110

N-S	E-W	Contract	L	N-S	E-W	IMP
1	2	3D	N 3 H8	110		0
2	1	3D	N 3 S6	110		0

**30**

♠K76  
♥964  
♦KJ1052  
♣Q5

♠Q4  
♥Q32  
♦Q8743  
♣J102

♠J98  
♥AK10875  
♦A6  
♣A8

♠A10532  
♥J  
♦9  
♣K97643

Board (30) Av: NS=-120

N-S	E-W	Contract	L	N-S	E-W	IMP
1	2	3H	E 3 D9	140		-1
2	1	4Sx	N-1 HK	100		1

**31**

♠AJ964  
♥J2  
♦AK4  
♣K83

♠K872  
♥94  
♦Q8762  
♣74

♠Q3  
♥Q8753  
♦95  
♣QJ65

♠105  
♥AK106  
♦J103  
♣A1092

Board (31) Av: NS=+660

N-S	E-W	Contract	L	N-S	E-W	IMP
1	2	3NT	S 5 D6	660		0
2	1	3NT	S 5 D6	660		0

**32**

♠A3  
♥K83  
♦1065  
♣J10864

♠J842  
♥A109742  
♦A  
♣32

♠Q6  
♥6  
♦KQJ743  
♣AQ75

♠K10975  
♥QJ5  
♦982  
♣K9

Board (32) Av: NS=+100

N-S	E-W	Contract	L	N-S	E-W	IMP
1	2	3NT	W-1 D6	100		0
2	1	3D	E-1 HQ	100		0

**1**

♠K754  
♥  
♦AK76432  
♣A10

♠A1082  
♥A3  
♦QJ  
♣KQJ43

♠Q3  
♥10864  
♦108  
♣98652

♠J96  
♥KQJ9752  
♦95  
♣7

Board (1) Av: NS=0

N-S	E-W	Contract	L	N-S	E-W	IMP
1	2	5D N-1	CK	50		-2
2	1	4H E-1	DT	50		2

**2**

♠A103  
♥8654  
♦52  
♣10972

♠K4  
♥Q3  
♦J974  
♣AK864

♠J8765  
♥KJ109  
♦AQ  
♣J5

♠Q92  
♥A72  
♦K10863  
♣Q3

Board (2) Av: NS=-120

N-S	E-W	Contract	L	N-S	E-W	IMP
1	2	1NT W 1	H6	90		1
2	1	3D W 5	D2	150		-1

**3**

♠A94  
♥AQ10  
♦A754  
♣Q102

♠J2  
♥7  
♦KJ9  
♣AKJ9873

♠KQ1083  
♥KJ853  
♦6  
♣54

♠765  
♥9642  
♦Q10832  
♣6

Board (3) Av: NS=+450

N-S	E-W	Contract	L	N-S	E-W	IMP
1	2	4S S 5	C6	450		0
2	1	4H S 5	C5	450		0

**4**

♠A10654  
♥A863  
♦54  
♣103

♠K92  
♥Q1042  
♦10876  
♣94

♠7  
♥J975  
♦AQ9  
♣KQ752

♠QJ83  
♥K  
♦KJ32  
♣AJ86

Board (4) Av: NS=+130

N-S	E-W	Contract	L	N-S	E-W	IMP
1	2	2H N 2	C9	110		-1
2	1	1NT S 3	D2	150		1

**5**

♠AKJ  
♥K8  
♦AK1063  
♣A42

♠7  
♥A109653  
♦942  
♣965

♠Q10543  
♥QJ  
♦J5  
♣KQJ7

♠9862  
♥742  
♦Q87  
♣1083

Board (5) Av: NS=+1080

N-S	E-W	Contract	L	N-S	E-W	IMP
1	2	6S N 6	HA	1430		8
2	1	3NT N 7	H5	720		-8

**6**

♠AK8  
♥A94  
♦K9864  
♣84

♠1052  
♥Q875  
♦105  
♣K1075

♠76  
♥1062  
♦AQ32  
♣QJ63

♠QJ943  
♥KJ3  
♦J7  
♣A92

Board (6) Av: NS=+80

N-S	E-W	Contract	L	N-S	E-W	IMP
1	2	1NT E-2	CQ	200		3
2	1	3NT N-1	S2	50		-4

**7**

♠AQ86  
♥J7  
♦97654  
♣KQ

♠K10  
♥Q63  
♦AKQ102  
♣J52

♠972  
♥AK10984  
♦J  
♣A43

♠J543  
♥52  
♦83  
♣109876

Board (7) Av: NS=+260

N-S	E-W	Contract	L	N-S	E-W	IMP
1	2	4H S 4	C6	620		8
2	1	4H S-1	D8	100		-8

**8**

♠Q4  
♥7  
♦AJ1065  
♣K9765

♠AKJ1095  
♥64  
♦9742  
♣3

♠8  
♥AJ10852  
♦Q  
♣Q10842

♠7632  
♥KQ93  
♦K83  
♣AJ

Board (8) Av: NS=-410

N-S	E-W	Contract	L	N-S	E-W	IMP
1	2	3NT W 3	H7	400		0
2	1	4S W 4	H7	420		0

**9**

♠92  
♥J8532  
♦543  
♣J106

♠8765  
♥AQ9  
♦J9  
♣KQ87

♠KQ43  
♥4  
♦KQ876  
♣A42

♠AJ10  
♥K1076  
♦A102  
♣953

Board (9) Av: NS=-220

N-S	E-W	Contract	L	N-S	E-W	IMP
1	2	3NT E 4	SQ	630		-9
2	1	3H E-2	DK	200		9

**10**

♠KQ108652  
♥K1042  
♦10  
♣7

♠AJ43  
♥Q5  
♦K942  
♣652

♠7  
♥A986  
♦8753  
♣AQ84

♠9  
♥J73  
♦AQJ6  
♣KJ1093

Board (10) Av: NS=+20

N-S	E-W	Contract	L	N-S	E-W	IMP
1	2	3H N-1	C2	100		-3
2	1	3S N 3	C2	140		3

**11**

♠4  
♥97  
♦742  
♣A1087642

♠QJ6  
♥A10653  
♦AJ53  
♣9

♠A73  
♥842  
♦Q109  
♣KQJ5

♠K109852  
♥KQJ  
♦K86  
♣3

Board (11) Av: NS=-450

N-S	E-W	Contract	L	N-S	E-W	IMP
1	2	5S W 5	CA	450		0
2	1	4S W 5	CA	450		0

**12**

♠KQ105  
♥J4  
♦J63  
♣QJ83

♠A  
♥KQ752  
♦10954  
♣976

♠86  
♥10963  
♦K872  
♣K105

♠J97432  
♥A8  
♦AQ  
♣A42

Board (12) Av: NS=-20

N-S	E-W	Contract	L	N-S	E-W	IMP
1	2	3NT W-2	SQ	100		3
2	1	2S W 3	CQ	140		-3

**13**

♠KQ  
♥K106  
♦654  
♣A10875

♠A10865  
♥542  
♦Q98  
♣J2

♠973  
♥AQJ973  
♦J3  
♣K6

♠J42  
♥8  
♦AK1072  
♣Q943

Board (13) Av: NS=-350

N-S	E-W	Contract	L	N-S	E-W	IMP
1	2	2NT	N-2 HQ		200	4
2	1	3NT	S-5 H5		500	-4

**14**

♠J10873  
♥J974  
♦K5  
♣Q7

♠AQ2  
♥  
♦J43  
♣AK108642

♠K95  
♥Q108532  
♦82  
♣J9

♠64  
♥AK6  
♦AQ10976  
♣53

Board (14) Av: NS=-120

N-S	E-W	Contract	L	N-S	E-W	IMP
1	2	3D	S-2 CA		100	1
2	1	3C	W 4 DK		130	0

**15**

♠AQ1052  
♥976  
♦83  
♣873

♠KJ7  
♥AKQ52  
♦AKQ9  
♣4

♠984  
♥J10843  
♦J5  
♣A106

♠63  
♥  
♦107642  
♣KQJ952

Board (15) Av: NS=-480

N-S	E-W	Contract	L	N-S	E-W	IMP
1	2	4H	W 6 C8		480	0
2	1	4H	E 6 CK		480	0

**16**

♠J9  
♥982  
♦Q63  
♣A9642

♠K1087  
♥KJ3  
♦K74  
♣QJ7

♠Q2  
♥Q106  
♦A952  
♣10853

♠A6543  
♥A754  
♦J108  
♣K

Board (16) Av: NS=-110

N-S	E-W	Contract	L	N-S	E-W	IMP
1	2	1NT	W 1 H9		90	1
2	1	1NT	W 2 H2		120	0

**17**

♠AJ1064  
♥J43  
♦A83  
♣A8

♠2  
♥962  
♦KQJ7  
♣QJ754

♠KQ5  
♥AK1087  
♦10  
♣9632

♠9873  
♥Q5  
♦96542  
♣K10

Board (17) Av: NS=+30

N-S	E-W	Contract	L	N-S	E-W	IMP
1	2	4H	W-2	H2	100	2
2	1	1NT	N-1	C6	50	-2

**18**

♠K964  
♥Q974  
♦98  
♣A63

♠83  
♥AK6  
♦KQ63  
♣J542

♠Q52  
♥J1053  
♦A10752  
♣9

♠AJ107  
♥82  
♦J4  
♣KQ1087

Board (18) Av: NS=-10

N-S	E-W	Contract	L	N-S	E-W	IMP
1	2	3D	W 4	H7	130	-3
2	1	2S	S 2	DK	110	3

**19**

♠J9  
♥AQJ1042  
♦KJ10  
♣52

♠K4  
♥K9  
♦AQ2  
♣QJ10984

♠AQ832  
♥753  
♦96  
♣AK7

♠10765  
♥86  
♦87543  
♣63

Board (19) Av: NS=-690

N-S	E-W	Contract	L	N-S	E-W	IMP
1	2	3NT	W 7	HQ	720	-1
2	1	3NT	W 5	HA	660	1

**20**

♠J10853  
♥K1072  
♦Q  
♣1073

♠76  
♥84  
♦J1096  
♣KQJ84

♠K2  
♥Q65  
♦K8732  
♣A65

♠AQ94  
♥AJ93  
♦A54  
♣92

Board (20) Av: NS=+170

N-S	E-W	Contract	L	N-S	E-W	IMP
1	2	3D	E-1	C9	100	-2
2	1	2H	S 6	DJ	230	2

**21**

♠K943  
♥52  
♦4  
♣AQ6543

♠J108  
♥A6  
♦Q983  
♣K1097

♠AQ  
♥KJ10873  
♦AKJ5  
♣AJ

♠7652  
♥Q94  
♦10762  
♣82

Board (21) Av: NS=-480

N-S	E-W	Contract	L	N-S	E-W	IMP
1	2	4H	E 5	C8	450	1
2	1	2Cx	N-2	DK	500	-1

**22**

♠Q72  
♥Q1052  
♦975  
♣873

♠AJ95  
♥A97  
♦A4  
♣AQ65

♠86  
♥K843  
♦KQJ103  
♣109

♠K1043  
♥J6  
♦862  
♣KJ42

Board (22) Av: NS=-660

N-S	E-W	Contract	L	N-S	E-W	IMP
1	2	3NT	W 5	D7	660	0
2	1	3NT	W 5	D9	660	0

**23**

♠82  
♥K107  
♦AJ75  
♣10982

♠K763  
♥AJ54  
♦1086  
♣54

♠105  
♥Q92  
♦KQ9  
♣QJ763

♠AQJ94  
♥863  
♦432  
♣AK

Board (23) Av: NS=+10

N-S	E-W	Contract	L	N-S	E-W	IMP
1	2	2S	S 2	C5	110	3
2	1	2S	S-1	C5	100	-3

**24**

♠Q63  
♥10952  
♦QJ74  
♣QJ

♠A10985  
♥63  
♦K83  
♣1083

♠42  
♥KJ74  
♦A92  
♣A942

♠KJ7  
♥AQ8  
♦1065  
♣K765

Board (24) Av: NS=+80

N-S	E-W	Contract	L	N-S	E-W	IMP
1	2	1NT	E-2	D5	100	1
2	1	1NT	E-1	C5	50	-1

**25**

♠A76432  
♥98  
♦A2  
♣K83

♠J9  
♥AQ1076  
♦J54  
♣A92

♠1085  
♥J3  
♦10976  
♣QJ74

♠KQ  
♥K542  
♦KQ83  
♣1065

Board (25) Av: NS=-50

N-S	E-W	Contract	L	N-S	E-W	IMP
1	2	4S	N-1	HJ	50	0
2	1	4S	N-1	HJ	50	0

**26**

♠KQ76  
♥QJ10  
♦A7  
♣Q1043

♠1053  
♥AK6  
♦Q1082  
♣AK6

♠9842  
♥9872  
♦J64  
♣J5

♠AJ  
♥543  
♦K953  
♣9872

Board (26) Av: NS=+60

N-S	E-W	Contract	L	N-S	E-W	IMP
1	2	1NT	W 1	HQ	90	-4
2	1	2H	E-2	C7	200	4

**27**

♠AQJ42  
♥Q983  
♦J  
♣J106

♠87  
♥10  
♦K10765  
♣K7543

♠1093  
♥AKJ62  
♦AQ8  
♣98

♠K65  
♥754  
♦9432  
♣AQ2

Board (27) Av: NS=-40

N-S	E-W	Contract	L	N-S	E-W	IMP
1	2	3D	E 4	S5	130	-3
2	1	3H	E-1	S5	50	3

**28**

♠J93  
♥K  
♦982  
♣J109632

♠A54  
♥1086543  
♦AJ  
♣74

♠872  
♥AQ2  
♦K753  
♣AK5

♠KQ106  
♥J97  
♦Q1064  
♣Q8

Board (28) Av: NS=-420

N-S	E-W	Contract	L	N-S	E-W	IMP
1	2	4H	E 4	SQ	420	0
2	1	4H	E 4	SK	420	0

**29**

♠ J1042  
♥ AJ943  
♦ 105  
♣ 98

♠ 987653 (N)  
♥ KQ  
♦ QJ  
♣ 1032

W — E  
S —

♠ KQ  
♥ 1065  
♦ A9432  
♣ A76

♠ A  
♥ 872  
♦ K876  
♣ KQJ54

Board (29) Av: NS=+200

N-S	E-W	Contract	L	N-S	E-W	IMP
1	2	2S	E-2 CK	200		0
2	1	2D	E-2 CK	200		0

**30**

♠ 7632  
♥ K  
♦ AJ53  
♣ A1042

♠ KJ8  
♥ 9742  
♦ 74  
♣ K953

N — E  
W — S

♠ Q104  
♥ 105  
♦ K10962  
♣ J76

♠ A95  
♥ AQJ863  
♦ Q8  
♣ Q8

Board (30) Av: NS=+440

N-S	E-W	Contract	L	N-S	E-W	IMP
1	2	3NT	N 4 D6	430		0
2	1	4H	S 5 D7	450		0

**31**

♠ Q103  
♥ KQ2  
♦ 964  
♣ KJ107

♠ K94  
♥ J94  
♦ AKQ105  
♣ 32

N — E  
W — S

♠ AJ87  
♥ 10863  
♦ J83  
♣ 84

♠ 652  
♥ A75  
♦ 72  
♣ AQ965

Board (31) Av: NS=-130

N-S	E-W	Contract	L	N-S	E-W	IMP
1	2	1NT	W 3 CJ	150		-1
2	1	3D	W 3 D4	110		1

**32**

♠ 962  
♥ 106  
♦ K10  
♣ AKQ864

♠ QJ3  
♥ A83  
♦ 6532  
♣ 1095

N — E  
W — S

♠ 1085  
♥ KQJ54  
♦ QJ  
♣ J72

♠ AK74  
♥ 972  
♦ A9874  
♣ 3

Board (32) Av: NS=+50

N-S	E-W	Contract	L	N-S	E-W	IMP
1	2	3S	N 3 HK	140		3
2	1	3NT	N-1 HK	50		-3



**1**

♠ QJ9  
♥ 876  
♦ A62  
♣ Q863

♠ 8  
♥ J105432  
♦ K10  
♣ A754

♠ 1054  
♥ K9  
♦ QJ843  
♣ KJ10

♠ AK7632  
♥ AQ  
♦ 975  
♣ 92

Board (1) Av: NS=+150

N-S	E-W	Contract	L	N-S	E-W	IMP
1	2	4D E-3 SA	150			0
2	1	3S S 3 HJ	140			0

**2**

♠ AJ983  
♥ AJ95  
♦  
♣ AJ64

♠  
♥ Q103  
♦ AQ8532  
♣ 9752

♠ Q542  
♥ 42  
♦ K10976  
♣ Q10

♠ K1076  
♥ K876  
♦ J4  
♣ K83

Board (2) Av: NS=+300

N-S	E-W	Contract	L	N-S	E-W	IMP
1	2	5Dx W-2 SA	300			0
2	1	5Dx W-2 SA	300			0

**3**

♠ AK953  
♥ J986  
♦ 7  
♣ KQ10

♠ J7  
♥ 74  
♦ AKQ53  
♣ 8753

♠ Q82  
♥ AQ1053  
♦ 84  
♣ J62

♠ 1064  
♥ K2  
♦ J10962  
♣ A94

Board (3) Av: NS=+300

N-S	E-W	Contract	L	N-S	E-W	IMP
1	2	4S N 4 D8	420			3
2	1	2S N 4 D8	170			-4

**4**

♠ Q  
♥ 954  
♦ AQ10932  
♣ A84

♠ 97  
♥ QJ63  
♦ 87  
♣ Q6532

♠ 108653  
♥ 107  
♦ KJ54  
♣ K10

♠ AKJ42  
♥ AK82  
♦ 6  
♣ J97

Board (4) Av: NS=+610

N-S	E-W	Contract	L	N-S	E-W	IMP
1	2	3NT S 3 HQ	600			0
2	1	4S S 4 C2	620			0

**5**

♠ 10642  
♥ Q986  
♦ A2  
♣ 1087

♠ 95  
♥ J52  
♦ KJ53  
♣ KQJ5

♠ AQJ  
♥ K7  
♦ 8764  
♣ A942

♠ K873  
♥ A1043  
♦ Q109  
♣ 63

Board (5) Av: NS=+50

N-S	E-W	Contract	L	N-S	E-W	IMP
1	2	3NT E-1 H3	50			0
2	1	3NT E-1 S7	50			0

**6**

♠ K1097  
♥ Q93  
♦ AJ5  
♣ Q93

♠ 52  
♥ AK62  
♦ KQ64  
♣ AK6

♠ QJ8  
♥ J87  
♦ 108732  
♣ J2

♠ A643  
♥ 1054  
♦ 9  
♣ 108754

Board (6) Av: NS=-140

N-S	E-W	Contract	L	N-S	E-W	IMP
1	2	1NT W 2 ST	120			1
2	1	2NT W 3 ST	150			0

**7**

♠ AJ965  
♥ 86  
♦ AQ107  
♣ 73

♠ K7  
♥ KQ10975  
♦ K843  
♣ 8

♠ 2  
♥ A32  
♦ J62  
♣ AQ10642

♠ Q10843  
♥ J4  
♦ 95  
♣ KJ95

Board (7) Av: NS=+210

N-S	E-W	Contract	L	N-S	E-W	IMP
1	2	4Sx N-1 HA	200			-9
2	1	4S N 4 HA	620			9

**8**

♠ KJ10943  
♥  
♦ 2  
♣ 876432

♠ AQ  
♥ A10986  
♦ J5  
♣ AQ95

♠ 865  
♥ KQ7  
♦ A984  
♣ KJ10

♠ 72  
♥ J5432  
♦ KQ10763  
♣

Board (8) Av: NS=-430

N-S	E-W	Contract	L	N-S	E-W	IMP
1	2	3NT W 4 C8	430			0
2	1	4H W 4 D2	420			0

**9**

♠ J  
♥ 10952  
♦ K109753  
♣ K2

♠ K9753  
♥ Q  
♦ 42  
♣ Q8653

♠ AQ104  
♥ KJ83  
♦ J86  
♣ 94

♠ 862  
♥ A764  
♦ AQ  
♣ AJ107

Board (9) Av: NS=-50

N-S	E-W	Contract	L	N-S	E-W	IMP
1	2	4H S-1 D4	50			0
2	1	4H S-1 C3	50			0

**10**

♠ AK8743  
♥ KJ  
♦ J1032  
♣ A

♠ J5  
♥ Q108  
♦ A96  
♣ Q10984

♠ 96  
♥ 7643  
♦ K84  
♣ J765

♠ Q102  
♥ A952  
♦ Q75  
♣ K32

Board (10) Av: NS=+680

N-S	E-W	Contract	L	N-S	E-W	IMP
1	2	4S N 6 D4	680			0
2	1	4S N 6 H4	680			0

**11**

♠ 1073  
♥ K8653  
♦ J432  
♣ A

♠ 86  
♥ Q4  
♦ AQ108  
♣ KQ1097

♠ AQ  
♥ 97  
♦ K96  
♣ J86532

♠ KJ9542  
♥ AJ102  
♦ 75  
♣ 4

Board (11) Av: NS=+630

N-S	E-W	Contract	L	N-S	E-W	IMP
1	2	3NT E-3 HJ	150			-10
2	1	3NTx E-5 HJ	1100			10

**12**

♠ 98752  
♥ 62  
♦ K95  
♣ K106

♠ KJ43  
♥ A98  
♦ J10  
♣ A853

♠ Q  
♥ QJ10753  
♦ AQ73  
♣ Q4

♠ A106  
♥ K4  
♦ 8642  
♣ J972

Board (12) Av: NS=-470

N-S	E-W	Contract	L	N-S	E-W	IMP
1	2	4H E 6 C6	480			0
2	1	4H W 5 D5	450			1

**13**

♠AJ72  
♥9843  
♦Q5  
♣Q105

♠4  
♥A105  
♦9742  
♣J9732

♠KQ1053  
♥J7  
♦K106  
♣A84

♠986  
♥KQ62  
♦AJ83  
♣K6

Board (13) Av:NS=+120

N-S	E-W	Contract	L	N-S	E-W	IMP
1	2	2H	N 3 SK	140		1
2	1	2S	E-1 HK	100		-1

**14**

♠A1064  
♥1064  
♦952  
♣1086

♠J93  
♥J93  
♦AJ763  
♣K9

♠KQ8752  
♥7  
♦K10  
♣J752

♠AKQ852  
♥AKQ852  
♦Q84  
♣AQ43

Board (14) Av:NS=-230

N-S	E-W	Contract	L	N-S	E-W	IMP
1	2	5H	S-3 S3	150		2
2	1	5Hx	S-2 H2	300		-2

**15**

♠A43  
♥QJ963  
♦96  
♣AK9

♠J62  
♥K108  
♦K75  
♣8654

♠Q987  
♥  
♦QJ832  
♣QJ32

♠K105  
♥A7542  
♦A104  
♣107

Board (15) Av:NS=+620

N-S	E-W	Contract	L	N-S	E-W	IMP
1	2	4H	S 4 C5	620		0
2	1	4H	S 4 C6	620		0

**16**

♠8743  
♥964  
♦5  
♣J9875

♠AK62  
♥J105  
♦AK10643  
♣

♠Q1095  
♥AQ87  
♦QJ  
♣AQ6

♠J  
♥K32  
♦9872  
♣K10432

Board (16) Av:NS=-1440

N-S	E-W	Contract	L	N-S	E-W	IMP
1	2	6NT	E 6 D2	1440		0
2	1	6S	W 6 D5	1430		0

**17**

♠AQJ  
♥953  
♦AQJ843  
♣10

♠932  
♥82  
♦1062  
♣QJ862

♠K5  
♥KQ764  
♦K95  
♣K54

♠108764  
♥AJ10  
♦7  
♣A973

Board (17) Av: NS=+60

N-S	E-W	Contract	L	N-S	E-W	IMP
1	2	4S	N-1	HK	50	-3
2	1	1S	N	4	HK	170

**18**

♠J8764  
♥K43  
♦542  
♣J3

♠10532  
♥J86  
♦Q63  
♣KQ5

♠AQ  
♥A1052  
♦J1098  
♣A76

♠K9  
♥Q97  
♦AK7  
♣109842

Board (18) Av: NS=+10

N-S	E-W	Contract	L	N-S	E-W	IMP
1	2	1NT	E	1	CT	90
2	1	3NT	E-2	C5	100	3

**19**

♠K932  
♥84  
♦AJ72  
♣875

♠AQJ8  
♥Q752  
♦865  
♣43

♠765  
♥A3  
♦KQ10943  
♣62

♠104  
♥KJ1096  
♦  
♣AKQJ109

Board (19) Av: NS=+280

N-S	E-W	Contract	L	N-S	E-W	IMP
1	2	5C	S	5	D8	400
2	1	3C	S	5	D3	150

**20**

♠KJ954  
♥J4  
♦109  
♣Q1087

♠A863  
♥93  
♦K83  
♣AK96

♠102  
♥A  
♦QJ7542  
♣J543

♠Q7  
♥KQ1087652  
♦A6  
♣2

Board (20) Av: NS=-100

N-S	E-W	Contract	L	N-S	E-W	IMP
1	2	4H	S-1	CA	100	0
2	1	4H	S-1	CA	100	0

**21**

♠Q86  
♥K876  
♦103  
♣AQ82

♠A1054  
♥93  
♦9842  
♣K96

♠J973  
♥Q1054  
♦AKJ6  
♣10

♠K2  
♥AJ2  
♦Q75  
♣J7543

Board (21) Av: NS=+80

N-S	E-W	Contract	L	N-S	E-W	IMP
1	2	3D	W-1	DT	50	-1
2	1	3S	W-2	CA	100	1

**22**

♠J6  
♥AKQ52  
♦Q74  
♣J54

♠A9754  
♥1074  
♦J8  
♣K83

♠K103  
♥83  
♦A932  
♣Q1097

♠Q82  
♥J96  
♦K1065  
♣A62

Board (22) Av: NS=+30

N-S	E-W	Contract	L	N-S	E-W	IMP
1	2	2H	N-1	C9	50	-2
2	1	2H	N	2	H8	110

**23**

♠K1072  
♥J653  
♦A842  
♣9

♠AQJ4  
♥10  
♦QJ7  
♣J10842

♠853  
♥K7  
♦10963  
♣AK73

♠96  
♥AQ9842  
♦K5  
♣Q65

Board (23) Av: NS=+810

N-S	E-W	Contract	L	N-S	E-W	IMP
1	2	4Hx	S	5	DQ	990
2	1	4H	S	4	CJ	620

**24**

♠AQ82  
♥  
♦J10742  
♣KQ82

♠96  
♥Q87653  
♦95  
♣1054

♠754  
♥K10  
♦AKQ  
♣AJ763

♠KJ103  
♥AJ942  
♦863  
♣9

Board (24) Av: NS=+20

N-S	E-W	Contract	L	N-S	E-W	IMP
1	2	4Sx	N-1	DK	100	-3
2	1	2S	N	3	DA	140

**25**

♠J93  
♥985  
♦J95  
♣K632

♠K764  
♥J3  
♦Q1072  
♣A85

♠AQ10852  
♥AQ72  
♦84  
♣109

♠AK1064  
♥AK63  
♦QJ74

Board (25) Av: NS=+170

N-S	E-W	Contract	L	N-S	E-W	IMP
1	2	4C	N	4	SK	130
2	1	2H	S	5	D7	200

**26**

♠762  
♥10643  
♦K10632  
♣A

♠A98  
♥QJ8  
♦AQ854  
♣QJ

♠J53  
♥K9  
♦9  
♣10987632

♠KQ104  
♥A752  
♦J7  
♣K54

Board (26) Av: NS=-50

N-S	E-W	Contract	L	N-S	E-W	IMP
1	2	4H	S-2	D9	200	-4
2	1	2H	S	2	CQ	110

**27**

♠A5  
♥A1083  
♦Q10  
♣AQ864

♠J432  
♥KJ76  
♦J75  
♣K9

♠Q96  
♥Q4  
♦AK93  
♣J532

♠K1087  
♥952  
♦8642  
♣107

Board (27) Av: NS=+30

N-S	E-W	Contract	L	N-S	E-W	IMP
1	2	1NT	N	3	C2	150
2	1	1NT	N-2	DA	100	-4

**28**

♠A987  
♥76  
♦7  
♣Q87432

♠KQ105432  
♥K3  
♦AK109

♠6  
♥AK8542  
♦QJ1098  
♣6

♠J  
♥QJ1093  
♦A6542  
♣J5

Board (28) Av: NS=-440

N-S	E-W	Contract	L	N-S	E-W	IMP
1	2	4S	W	4	D7	420
2	1	4S	W	5	C6	450

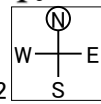
29

♠ J1076  
♥ A1076  
♦ K632  
♣ 5

♠ 95  
♥ 5  
♦ 10875  
♣ AJ10742

♠ AQ43  
♥ J983  
♦ QJ  
♣ Q86

♠ K82  
♥ KQ42  
♦ A94  
♣ K93



Board (29) Av: NS=+50

N-S	E-W	Contract	L	N-S	E-W	IMP
1	2	3C	E 3 HK	110	-4	
2	1	4Cx	E-1 HK	200	4	

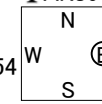
30

♠ 108763  
♥ 74  
♦ 103  
♣ AKJ9

♠ A95  
♥ K96  
♦ QJ654  
♣ 65

♠ 4  
♥ J103  
♦ AK872  
♣ Q1087

♠ KQJ2  
♥ AQ852  
♦ 9  
♣ 432



Board (30) Av: NS=+150

N-S	E-W	Contract	L	N-S	E-W	IMP
1	2	4S	S 4 DQ	420	7	
2	1	4D	W 4 CA	130	-7	

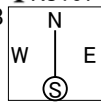
31

♠ 97542  
♥ J10  
♦ J5  
♣ KJ107

♠ AKQ108  
♥ Q862  
♦  
♣ Q982

♠ 3  
♥ 975  
♦ AK10762  
♣ 653

♠ J6  
♥ AK43  
♦ Q9843  
♣ A4



Board (31) Av: NS=-10

N-S	E-W	Contract	L	N-S	E-W	IMP
1	2	2H	E 2 CA	110	-3	
2	1	2H	E-2 H2	100	3	

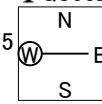
32

♠ AQJ  
♥ 64  
♦ 1075  
♣ QJ532

♠ K10  
♥ AQ975  
♦ AK92  
♣ 86

♠ 8753  
♥ J102  
♦ QJ64  
♣ A4

♠ 9642  
♥ K83  
♦ 83  
♣ K1097



Board (32) Av: NS=-620

N-S	E-W	Contract	L	N-S	E-W	IMP
1	2	4H	W 4 CQ	620	0	
2	1	4H	W 4 H6	620	0	

**1**

♠AQ102  
♥J842  
♦  
♣KJ972

♠96  
♥KQ  
♦KQ875  
♣AQ106

W N E  
S

♠KJ43  
♥A9753  
♦A943  
♣

♠875  
♥106  
♦J1062  
♣8543

Board (1) Av: NS=-450

N-S	E-W	Contract	L	N-S	E-W	IMP
1	2	4H	E 6	S6	480	-1
2	1	5D	W 6	C2	420	1

**2**

♠J2  
♥A4  
♦10632  
♣J9752

♠A1085  
♥QJ5  
♦K984  
♣Q4

W N E  
S

♠K973  
♥9762  
♦AQ  
♣AK8

♠Q64  
♥K1083  
♦J75  
♣1063

Board (2) Av: NS=-420

N-S	E-W	Contract	L	N-S	E-W	IMP
1	2	4S	E 4	C2	420	0
2	1	4S	E 4	C3	420	0

**3**

♠J76  
♥94  
♦K74  
♣107543

♠943  
♥A73  
♦8  
♣AQJ962

W N E  
S

♠AQ10852  
♥Q1085  
♦Q9  
♣K

♠K  
♥KJ62  
♦AJ106532  
♣8

Board (3) Av: NS=-390

N-S	E-W	Contract	L	N-S	E-W	IMP
1	2	5Dx	N-1	S2	100	7
2	1	4S	E 6	DA	680	-7

**4**

♠  
♥AKJ9762  
♦AQ7  
♣KQ6

♠1097653  
♥Q10  
♦9  
♣A932

W N E  
S

♠K842  
♥843  
♦K853  
♣105

♠AQJ  
♥5  
♦J10642  
♣J874

Board (4) Av: NS=+450

N-S	E-W	Contract	L	N-S	E-W	IMP
1	2	5C	N-2	S2	200	-12
2	1	4Sx	E-4	H5	1100	12

**5**

♠1072  
♥1054  
♦KJ  
♣AK843

♠AKJ93  
♥9  
♦A432  
♣Q65

W N E  
S

♠KJ8763  
♥K986  
♦J1072  
♣

♠Q8654  
♥AQ2  
♦Q1075  
♣9

Board (5) Av: NS=+390

N-S	E-W	Contract	L	N-S	E-W	IMP
1	2	2H	E-1	C9	50	-8
2	1	3Sx	S 3	H9	730	8

**6**

♠K2  
♥10953  
♦A1085  
♣QJ10

♠J73  
♥A  
♦KQ973  
♣9653

W N E  
S

♠AQ1098  
♥KQ74  
♦K872  
♣

♠654  
♥J862  
♦J642  
♣A4

Board (6) Av: NS=-680

N-S	E-W	Contract	L	N-S	E-W	IMP
1	2	4S	E 6	CA	680	0
2	1	4S	E 6	CA	680	0

**7**

♠AKQ108  
♥AK92  
♦AJ  
♣J6

♠2  
♥QJ754  
♦8532  
♣K43

W N E  
S

♠9763  
♥106  
♦K96  
♣Q1085

♠J54  
♥83  
♦Q1074  
♣A972

Board (7) Av: NS=+660

N-S	E-W	Contract	L	N-S	E-W	IMP
1	2	4S	S 5	HQ	650	0
2	1	3NT	N 5	S7	660	0

**8**

♠J82  
♥K85  
♦KJ3  
♣K974

♠Q6  
♥10972  
♦Q6542  
♣Q2

W N E  
S

♠A9543  
♥Q6  
♦107  
♣10853

♠K107  
♥AJ43  
♦A98  
♣AJ6

Board (8) Av: NS=+190

N-S	E-W	Contract	L	N-S	E-W	IMP
1	2	3NT	N-1	S4	50	-6
2	1	3NT	S 4	D4	430	6

**9**

♠K982  
♥J1072  
♦  
♣J10974

♠7  
♥Q6  
♦AJ10852  
♣AK83

W N E  
S

♠Q103  
♥985  
♦Q963  
♣Q62

♠AJ654  
♥AK43  
♦K74  
♣5

Board (9) Av: NS=+330

N-S	E-W	Contract	L	N-S	E-W	IMP
1	2	3S	S 5	CK	200	-4
2	1	4S	S 5	CA	450	3

**10**

♠A8732  
♥10  
♦Q10864  
♣Q4

♠Q104  
♥AK4  
♦KJ732  
♣K3

W N E  
S

♠K  
♥QJ9762  
♦A9  
♣10862

♠J965  
♥853  
♦5  
♣AJ975

Board (10) Av: NS=-640

N-S	E-W	Contract	L	N-S	E-W	IMP
1	2	4H	E 4	D5	620	1
2	1	4H	W 5	CQ	650	0

**11**

♠Q872  
♥A10  
♦K976  
♣J72

♠109  
♥98742  
♦J832  
♣A3

W N E  
S

♠K6543  
♥Q6  
♦Q4  
♣K1095

♠AJ  
♥KJ53  
♦A105  
♣Q864

Board (11) Av: NS=+400

N-S	E-W	Contract	L	N-S	E-W	IMP
1	2	3NT	S 3	H9	400	0
2	1	3NT	S 3	D2	400	0

**12**

♠J  
♥K10543  
♦AK87  
♣1093

♠9532  
♥982  
♦10542  
♣K2

W N E  
S

♠AKQ76  
♥AQ  
♦Q96  
♣8654

♠1084  
♥AJ76  
♦J3  
♣AQJ7

Board (12) Av: NS=+380

N-S	E-W	Contract	L	N-S	E-W	IMP
1	2	5H	N 5	SA	650	7
2	1	4Sx	E-1	S6	100	-7

**13**

♠53  
♥Q973  
♦1053  
♣AJ107

♠Q96  
♥A8  
♦9862  
♣K842

♠A10842  
♥K1052  
♦Q7  
♣63

♠KJ7  
♥J64  
♦AKJ4  
♣Q95

Board (13) Av: NS=+110

N-S	E-W	Contract	L	N-S	E-W	IMP
1	2	2S	W-1	S2	100	0
2	1	2NT	S 2	S4	120	0

**14**

♠AK982  
♥QJ853  
♦J6  
♣2

♠K10942  
♥K8754  
♦AJ7

♠QJ43  
♥A  
♦A103  
♣K10654

♠10765  
♥76  
♦Q92  
♣Q983

Board (14) Av: NS=+80

N-S	E-W	Contract	L	N-S	E-W	IMP
1	2	5D	W-1	C2	50	-1
2	1	5D	W-2	SK	100	1

**15**

♠AQ9  
♥Q9842  
♦983  
♣AQ

♠KJ1075  
♥K65  
♦J10873

♠86  
♥J73  
♦QJ1064  
♣654

♠432  
♥A10  
♦AK752  
♣K92

Board (15) Av: NS=+630

N-S	E-W	Contract	L	N-S	E-W	IMP
1	2	3NT	S 3	CJ	600	-1
2	1	3NT	S 5	CJ	660	1

**16**

♠10  
♥AJ8542  
♦Q84  
♣K63

♠A2  
♥6  
♦A96532  
♣QJ97

♠J98654  
♥KQ7  
♦A1052

♠KQ73  
♥1093  
♦KJ107  
♣84

Board (16) Av: NS=-710

N-S	E-W	Contract	L	N-S	E-W	IMP
1	2	4S	E 4	HT	620	3
2	1	4Sx	E 4	HT	790	-2

**17**

♠ J1052  
♥ 10765  
♦ QJ4  
♣ 53

♠ Q876  
♥ Q2  
♦ 972  
♣ Q762

♠ K93  
♥ K3  
♦ 1083  
♣ AJ984

♠ A4  
♥ AJ984  
♦ AK65  
♣ K10

Board (17) Av: NS=+420

N-S	E-W	Contract	L	N-S	E-W	IMP
1	2	4H S 4 S7	420			0
2	1	4H N 4 D3	420			0

**18**

♠ J9  
♥ J93  
♦ A8  
♣ AQJ765

♠ A32  
♥ K105  
♦ Q1063  
♣ K42

♠ KQ864  
♥ AQ76  
♦ K2  
♣ 83

♠ 1075  
♥ 842  
♦ J9754  
♣ 109

Board (18) Av: NS=-190

N-S	E-W	Contract	L	N-S	E-W	IMP
1	2	4S E-1 CT	50			6
2	1	3NT W 4 CQ	430			-6

**19**

♠ K765  
♥ Q73  
♦ 5  
♣ A9874

♠ 9  
♥ J98542  
♦ A3  
♣ QJ106

♠ A103  
♥ K106  
♦ KJ842  
♣ 52

♠ QJ842  
♥ A  
♦ Q10976  
♣ K3

Board (19) Av: NS=+440

N-S	E-W	Contract	L	N-S	E-W	IMP
1	2	4S S 5 CQ	450			0
2	1	4S S 4 CQ	420			-1

**20**

♠ 8  
♥ KJ10974  
♦ Q984  
♣ 74

♠ K5  
♥ 83  
♦ A106  
♣ AJ10863

♠ 94  
♥ AQ52  
♦ J73  
♣ KQ95

♠ AQJ107632  
♥ 6  
♦ K52  
♣ 2

Board (20) Av: NS=-50

N-S	E-W	Contract	L	N-S	E-W	IMP
1	2	5C W-1 S8	100			4
2	1	4Sx S-1 CA	200			-4

**21**

♠ K85  
♥ A8762  
♦ J  
♣ Q632

♠ A2  
♥ K1095  
♦ AK983  
♣ 95

♠ Q107643  
♥ 4  
♦ Q75  
♣ KJ10

♠ J9  
♥ QJ3  
♦ 10642  
♣ A874

Board (21) Av: NS=+50

N-S	E-W	Contract	L	N-S	E-W	IMP
1	2	4S E-1 HQ	50			0
2	1	4S W-1 DJ	50			0

**22**

♠ A83  
♥ 832  
♦ 6  
♣ AKJ1064

♠ 5  
♥ Q1054  
♦ KQ9843  
♣ 87

♠ J10642  
♥ AKJ  
♦ A7  
♣ Q52

♠ KQ97  
♥ 976  
♦ J1052  
♣ 93

Board (22) Av: NS=+300

N-S	E-W	Contract	L	N-S	E-W	IMP
1	2	3NTx E-2 H9	500			5
2	1	3NT E-1 C9	100			-5

**23**

♠ Q1074  
♥  
♦ KQJ5  
♣ AKQ62

♠ 93  
♥ AKQJ96  
♦ 974  
♣ 108

♠ K8652  
♥ 1042  
♦ A62  
♣ 97

♠ AJ  
♥ 8753  
♦ 1083  
♣ J543

Board (23) Av: NS=+620

N-S	E-W	Contract	L	N-S	E-W	IMP
1	2	5C N 6 H2	620			0
2	1	5C S 6 HK	620			0

**24**

♠ Q10864  
♥ K9  
♦ KJ75  
♣ AJ10

♠ A732  
♥ 1064  
♦ 863  
♣ K98

♠ KJ  
♥ AJ753  
♦ Q9  
♣ J653

♠ 95  
♥ Q82  
♦ A1042  
♣ Q742

Board (24) Av: NS=+20

N-S	E-W	Contract	L	N-S	E-W	IMP
1	2	2S N-2 C5	100			-3
2	1	3D N 4 C5	130			3

**25**

♠ 653  
♥ KQ8764  
♦ 52  
♣ J7

♠ K8  
♥ 32  
♦ AK93  
♣ KQ953

♠ AJ7  
♥ A1095  
♦ Q6  
♣ A1062

♠ Q10942  
♥ J  
♦ J10874  
♣ 84

Board (25) Av: NS=-1270

N-S	E-W	Contract	L	N-S	E-W	IMP
1	2	6NT E 6 HJ	1440			-5
2	1	2Hx S-5 CK	1100			5

**26**

♠ J65  
♥ Q103  
♦ QJ3  
♣ 10862

♠ 10873  
♥ A972  
♦ 76  
♣ K94

♠ AK2  
♥ J64  
♦ K54  
♣ AQJ3

♠ Q94  
♥ K85  
♦ A10982  
♣ 75

Board (26) Av: NS=-250

N-S	E-W	Contract	L	N-S	E-W	IMP
1	2	3NT E 3 DT	600			-8
2	1	3NT E-1 DT	100			8

**27**

♠ AK9  
♥ J9863  
♦ Q  
♣ 10843

♠ 7654  
♥ Q75  
♦ 1085  
♣ 765

♠ QJ10832  
♥ A2  
♦ AK74  
♣ 9

♠ K104  
♥ J9632  
♦ AKQJ2

Board (27) Av: NS=0

N-S	E-W	Contract	L	N-S	E-W	IMP
1	2	6H N-2 DK	100			-3
2	1	4S E-2 CK	100			3

**28**

♠ QJ9763  
♥ AK94  
♦  
♣ 1054

♠ 108542  
♥ 5  
♦ J10954  
♣ QJ

♠ K  
♥ J8  
♦ K862  
♣ AK9862

♠ A  
♥ Q107632  
♦ AQ73  
♣ 73

Board (28) Av: NS=+670

N-S	E-W	Contract	L	N-S	E-W	IMP
1	2	4H S 6 CQ	680			0
2	1	4H S 5 CQ	650			-1

29

♠83  
♥Q103  
♦A743  
♣K874

♠AK  
♥AK62  
♦Q1082  
♣AQ3

♠Q109762  
♥J5  
♦65  
♣1052

♠J54  
♥9874  
♦KJ9  
♣J96

(N)  
W — E  
S

Board (29) Av: NS=-400

N-S	E-W	Contract	L	N-S	E-W	IMP
1	2	2S	E 4 C6	170	6	
2	1	4S	E 4 H7	620	-6	

30

♠K1084  
♥AQ4  
♦532  
♣Q97

♠A972  
♥863  
♦KJ64  
♣32

♠QJ653  
♥J9  
♦1098  
♣AK4

♠J54  
♥K10752  
♦AQ7  
♣J10865

(N)  
W — E  
S

Board (30) Av: NS=+360

N-S	E-W	Contract	L	N-S	E-W	IMP
1	2	4H	S 4 SQ	420	2	
2	1	4Sx	W-2 HA	300	-2	

31

♠K953  
♥AJ  
♦K97  
♣QJ84

♠76  
♥9732  
♦1086  
♣K975

♠QJ1084  
♥K86  
♦53  
♣1063

♠A2  
♥Q1054  
♦AQJ42  
♣A2

(N)  
W — E  
S

Board (31) Av: NS=+1030

N-S	E-W	Contract	L	N-S	E-W	IMP
1	2	4NT	S 6 SQ	690	-8	
2	1	6D	S 6 SQ	1370	8	

32

♠Q97  
♥J9872  
♦Q865  
♣2

♠52  
♥A65  
♦A  
♣KQ109653

♠AK8643  
♥K103  
♦1043  
♣7

♠J10  
♥Q4  
♦KJ972  
♣AJ84

(N)  
W — E  
S

Board (32) Av: NS=-280

N-S	E-W	Contract	L	N-S	E-W	IMP
1	2	4S	W 5 C2	650	-9	
2	1	4S	W-1 H2	100	9	