

1

♠54
♥8642
♦KQ
♣QJ1054

♠AQ7
♥Q97
♦A6532
♣A7

♠K1093
♥J1053
♦984
♣93

W N E S

♠J862
♥AK
♦J107
♣K862

Av: NS=+70

N-S	E-W	Contract	L	N-S	E-W	IMP
1	13	2H	W-1 H2	50		-1
13	1	1NT	W-2 C5	100		1
2	26	2H	W 2 HK		110	-5
26	2	3D	E-1 H2	50		-1
3	15	1NT	W-1 CQ	50		-1
15	3	1NT	S 2 D2	120		2
4	8	3D	E-2 CQ	100		1
8	4	1NT	W-1 CQ	50		-1
5	24	2C	S 4 DA	130		2
24	5	3C	S 4 DA	130		2
6	18	1NT	W 1 CJ		90	-4
18	6	3C	S 4 DA	130		2
7	10	3C	S 4 H6	130		2
10	7	3H	E-2 HK	100		1
9	25	2S	W-2 CQ	100		1
25	9	2H	E-1 DJ	50		-1
11	23	1NT	W-2 CQ	100		1
23	11	1NT	W-2 CQ	100		1
12	20	2D	W 2 DK		90	-4
20	12	1NT	W-1 CQ	50		-1
14	19	3D	W-1 CQ	50		-1
19	14	3C	S 4 DA	130		2
16	21	1NT	W 1 CJ		90	-4
21	16	3C	S 4 DA	130		2
17	22	1NT	W-1 CQ	50		-1
22	17	1NT	W-2 CQ	100		1

2

♠QJ52
♥532
♦7
♣AQ987

♠K8743
♥874
♦J94
♣J3

♠A106
♥AKJ106
♦A532
♣6

W N E S

♠9
♥Q9
♦KQ1086
♣K10542

Av: NS=-130

N-S	E-W	Contract	L	N-S	E-W	IMP
1	13	4H	E 4 DK	420		-7
13	1	4C	S-1 HJ	100		1
2	26	4C	N-1 HA	100		1
26	2	2H	E 3 DK	140		0
3	15	2S	W 2 D7	110		1
15	3	2H	E 4 S2	170		-1
4	8	2H	E 3 DK	140		0
8	4	3H	E 4 S9	170		-1
5	24	4C	N-1 HA	100		1
24	5	2H	E 4 S9	170		-1
6	18	2H	E 3 DK	140		0
18	6	2H	E 3 DK	140		0
7	10	2S	E 2 H6	110		1
10	7	4H	E 4 S9	420		-7
9	25	4C	N-1 HA	100		1
25	9	4H	E-1 DK	50		5
11	23	4H	E-1 DK	50		5
23	11	2S	W 3 D6		140	0
12	20	4H	E-2 C2	100		6
20	12	4H	E 4 C3		420	-7
14	19	2S	W 2 D7		110	1
19	14	4H	E-2 DK	100		6
16	21	5C	N-2 HA		200	-2
21	16	2S	W 2 D7		110	1
17	22	4C	N-1 HK		100	1
22	17	2S	W 2 D7		110	1

3

♠QJ64
♥KQ93
♦A10
♣943

♠A8753
♥85
♦J863
♣A5

♠A62
♥AKJ106
♦KQ974
♣KJ872

W N E S

♠K1092
♥J1074
♦52
♣Q106

Av: NS=-350

N-S	E-W	Contract	L	N-S	E-W	IMP
1	13	5D	W 5 HQ	600		-6
13	1	3D	W 6 HK	170		5
2	26	4D	W 5 HQ	150		5
26	2	3H	N-1 DQ	50		7
3	15	3D	E 5 HJ	150		5
15	3	3D	E 6 C2	170		5
4	8	3H	N-1 DK	50		7
8	4	5D	W 5 HK	600		-6
5	24	3D	E 4 HJ	130		6
24	5	5D	E 6 D5		620	-7
6	18	3NT	E-1 H4		100	10
18	6	5D	W 5 HK		600	-6
7	10	5D	E 6 H6		620	-7
10	7	6D	W 6 SQ		1370	-14
9	25	5D	E 5 HJ		600	-6
25	9	5D	W 5 HK		600	-6
11	23	3NT	E-1 HJ		100	10
23	11	5D	E 6 C6		620	-7
12	20	4Hx	N-2 DK		300	2
20	12	4D	E 5 HJ		150	5
14	19	5D	E 5 HK		600	-6
19	14	3D	E 6 D2		170	5
16	21	5D	W 6 HK		620	-7
21	16	4D	E 5 HJ		150	5
17	22	2H	S-3 SA		150	5
22	17	5D	E 6 D2		620	-7

4

♠A
♥KQ106
♦K1063
♣8754

♠K873
♥J7
♦AJ742
♣K3

♠J9542
♥A932
♦8
♣Q109

W N E S

♠Q106
♥854
♦Q95
♣AJ62

Av: NS=+10

N-S	E-W	Contract	L	N-S	E-W	IMP
1	13	3S	E 3 H2		140	-4
13	1	3S	E 3 H2		140	-4
2	26	3S	W 3 D2		140	-4
26	2	4S	W-2 HK	200		5
3	15	4S	W-1 SA	100		3
15	3	3S	E 3 H2		140	-4
4	8	3S	E-1 H4	100		3
8	4	3S	E-1 H6	100		3
5	24	4Sx	E-2 H8	500		10
24	5	3S	E 3 H4		140	-4
6	18	4S	W-1 C5	100		3
18	6	3S	E 3 H2		140	-4
7	10	2S	E 2 H6		110	-3
10	7	2S	E 2 H4		110	-3
9	25	4S	W-1 C5	100		3
25	9	4S	E-3 H4	300		7
11	23	4S	E-2 H4	200		5
23	11	2S	E 2 H4		110	-3
12	20	3C	N 3 D8	110		3
20	12	3S	W-1 HK	100		3
14	19	2S	E 2 H5		110	-3
19	14	2S	E 2 H4		110	-3
16	21	2S	W 3 HK		140	-4
21	16	4S	W-2 HK	200		5
17	22	3C	S 3 DA	110		3
22	17	2S	E 3 H8		140	-4

5

♠ J109
♥ 108532
♦ A
♣ 6542

♠ 83
♥ KQJ4
♦ 10763
♣ A73

♠ KQ764
♥ A
♦ Q4
♣ KQJ108

♠ A52
♥ 976
♦ KJ9852
♣ 9

W N E S

Av: NS=-300

N-S	E-W	Contract	L	N-S	E-W	IMP
1	13	3NT	E 4 H9		430	-4
13	1	4S	E-2 C9	100		9
2	26	3NT	W 4 D5		430	-4
26	2	3NT	W 4 SJ		430	-4
3	15	5C	E 5 H2		400	-3
15	3	3NT	W 4 H2		430	-4
4	8	4S	E-2 D9	100		9
8	4	3NT	W 3 H3		400	-3
5	24	4S	W-3 C9	150		10
24	5	3NT	W 3 H3		400	-3
6	18	3NT	W 3 H3		400	-3
18	6	3NT	E 3 D9		400	-3
7	10	4S	E 4 H6		420	-3
10	7	5C	E-1 D9	50		8
9	25	3NT	W 3 H3		400	-3
25	9	3NT	W 3 H3		400	-3
11	23	4C	E 5 D5		150	4
23	11	3C	E 6 H5		170	4
12	20	4S	E 4 D5		420	-3
20	12	3NT	W 3 H3		400	-3
14	19	3C	E 4 D5		130	5
19	14	5C	E 5 D5		400	-3
16	21	5C	E 5 D5		400	-3
21	16	4S	E 4 H7		420	-3
17	22	5C	E 5 D9		400	-3
22	17	5C	E-1 D9	50		8

6

♠ J9753
♥ A64
♦ K6
♣ Q86

♠ A1062
♥ Q10932
♦ 73
♣ A4

♠ K4
♥ 875
♦ QJ1054
♣ KJ10

♠ Q8
♥ KJ
♦ A982
♣ 97532

W N E S

Av: NS=+10

N-S	E-W	Contract	L	N-S	E-W	IMP
1	13	2H	W-1 S2	100		3
13	1	2S	N 2 H8		110	3
2	26	3H	W-1 D2		100	3
26	2	2S	N 2 DJ		110	3
3	15	2H	W 2 S3		110	-3
15	3	3C	S-1 H2		50	-2
4	8	Passout				0
8	4	3H	W 3 H4		140	-4
5	24	1NT	S-2 H2		100	-3
24	5	3H	W 3 S3		140	-4
6	18	3H	W 3 S3		140	-4
18	6	3C	N-1 H2		50	-2
7	10	3H	E-2 H6	200		5
10	7	3H	W-2 S3	200		5
9	25	3H	W-1 S5	100		3
25	9	3H	W-1 DK	100		3
11	23	3H	W-1 S3	100		3
23	11	2H	E 3 C2		140	-4
12	20	2H	W 2 S4		110	-3
20	12	2H	W 2 DK		110	-3
14	19	2S	N 2 DQ	110		3
19	14	2H	W-1 DK	100		3
16	21	3H	W 3 H4		140	-4
21	16	2S	N 2 DQ	110		3
17	22	2S	N 2 H8	110		3
22	17	2H	W 2 S3		110	-3

7

♠ K2
♥ K5
♦ J98
♣ AJ10875

♠ Q5
♥ A983
♦ 6432
♣ KQ2

♠ AJ76
♥ QJ1072
♦ Q107
♣ 9

♠ 109843
♥ 64
♦ AK5
♣ 643

W N E S

Av: NS=-30

N-S	E-W	Contract	L	N-S	E-W	IMP
1	13	4H	E-1 DA	100		4
13	1	3H	W 4 CA		170	-4
2	26	3C	N-1 D2		100	-2
26	2	4H	W 4 CA		620	-11
3	15	3H	E 3 DK		140	-3
15	3	3H	E 3 D2		140	-3
4	8	3H	W 3 ST		140	-3
8	4	3C	N-1 HQ		100	-2
5	24	3H	E 3 DK		140	-3
24	5	3H	E 3 DA		140	-3
6	18	3H	W-1 D8	100		4
18	6	3H	E 3 DA		140	-3
7	10	3H	E-1 H6	100		4
10	7	3H	E 3 G2		140	-3
9	25	4H	E-1 DK	100		4
25	9	3D	W-3 D9	300		8
11	23	3NT	W-4 CJ	400		10
23	11	3H	E 3 C2		140	-3
12	20	4H	E-1 ST	100		4
20	12	4H	E-2 DK	200		6
14	19	3H	E 3 D2		140	-3
19	14	2H	E 4 ST		170	-4
16	21	3H	E-1 C3	100		4
21	16	4H	W-1 S2	100		4
17	22	3H	E 3 DA		140	-3
22	17	2S	N 2 HQ	110		4

8

♠ Q86
♥ 104
♦ KQJ85
♣ Q83

♠ 103
♥ K762
♦ A97632
♣ 5

♠ 42
♥ AQ95
♦ 10
♣ A109764

♠ AKJ975
♥ J83
♦ 4
♣ KJ2

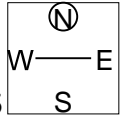
W N E S

Av: NS=-190

N-S	E-W	Contract	L	N-S	E-W	IMP
1	13	4Sx	S-3 C4		500	-7
13	1	4H	E 4 SA		420	-6
2	26	3C	W 3 D2		110	2
26	2	4S	S-2 C5		100	3
3	15	4S	S-3 C5		150	1
15	3	4S	S-3 C2		150	1
4	8	4S	S-3 C5		150	1
8	4	4S	S-3 C5		150	1
5	24	3S	S-1 C8		50	4
24	5	4S	S-3 C5		150	1
6	18	4Sx	S-3 C5	500		-7
18	6	4S	S-1 C5		50	4
7	10	4Sx	N-3 H6		500	-7
10	7	2S	S-1 C5		50	4
9	25	3S	S-1 C8		50	4
25	9	4S	S-2 C5		100	3
11	23	4S	N-3 DT		150	1
23	11	3S	N-2 C5		100	3
12	20	4S	S-3 C5		150	1
20	12	3S	S-2 HK		100	3
14	19	4Hx	E 4 D4		590	-9
19	14	4S	S-3 C5		150	1
16	21	4S	N-3 DT		150	1
21	16	4Sx	S-3 C5		500	-7
17	22	4S	S-2 C5		100	3
22	17	3S	S-1 C5		50	4

9

♠ 95
 ♥ KQ3
 ♦ A1062
 ♣ KQJ3
 ♠ 10876
 ♥ A108742
 ♦ 74
 ♣ 10
 ♠ Q43
 ♥ 96
 ♦ KQ
 ♣ A98765
 ♠ AKJ2
 ♥ J5
 ♦ J9853
 ♣ 42

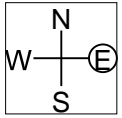


Av: NS=+350

N-S	E-W	Contract	L	N-S	E-W	IMP
1	13	2CxxN-1	S7		200	-11
13	1	3NT	N 3 H2	400		2
2	26	3NT	N 4 D2	430		2
26	2	3NT	N 3 H7	400		2
3	15	3NT	N 4 H7	430		2
15	3	3NT	N 4 H7	430		2
4	8	3NT	N 4 H7	430		2
8	4	3NT	N 3 H7	400		2
5	24	3NT	N 4 H7	430		2
24	5	2CxxS	2 DK	560		5
6	18	3NT	N 4 H2	430		2
18	6	3NT	N 4 CT	430		2
7	10	2CxxN	2 H6	560		5
10	7	3CxxS-1	C5		200	-11
9	25	3NT	N 3 H3	400		2
25	9	3NT	N 4 H7	430		2
11	23	3NT	N 4 H3	430		2
23	11	3NT	N 3 H7	400		2
12	20	3NT	N 4 H7	430		2
20	12	3NT	N 4 CT	430		2
14	19	3NT	N 3 H6	400		2
19	14	3NT	N 4 H7	430		2
16	21	2Hx	E 2 C4		670	-14
21	16	3NT	N 4 H7	430		2
17	22	3CxxS-1	CA		200	-11
22	17	3NT	N 4 H8	430		2

10

♠ 52
 ♥ 942
 ♦ A8653
 ♣ 872
 ♠ KQJ9643
 ♥ 6
 ♦
 ♣ KQ965
 ♠ A
 ♥ AKQJ75
 ♦ KJ972
 ♣ A
 ♠ 1087
 ♥ 1083
 ♦ Q104
 ♣ J1043



Av: NS=-1550

N-S	E-W	Contract	L	N-S	E-W	IMP
1	13	6S	E 7 D2		1460	3
13	1	6S	E 7 D4		1460	3
2	26	6S	E 7 D2		1460	3
26	2	7S	E 7 D4		2210	-12
3	15	6S	E 7 D4		1460	3
15	3	6H	W 6 D2		1430	3
4	8	7S	E 7 CJ		2210	-12
8	4	6H	W-1 DA	100		17
5	24	7S	E 7 C4		2210	-12
24	5	7S	E 7 CJ		2210	-12
6	18	6S	E 7 D4		1460	3
18	6	6S	E 7 D2		1460	3
7	10	6S	E 7 H6		1460	3
10	7	6S	E 7 D4		1460	3
9	25	7S	E 7 CJ		2210	-12
25	9	6S	E 7 CJ		1460	3
11	23	6S	E 7 D3		1460	3
23	11	7H	W-1 DA	100		17
12	20	7S	E 7 CJ		2210	-12
20	12	7S	E 7 CJ		2210	-12
14	19	6S	E 7 D2		1460	3
19	14	6S	E 7 D4		1460	3
16	21	7H	E-1 DA	100		17
21	16	7S	W 7 C7		2210	-12
17	22	6S	E 7 D4		1460	3
22	17	6S	E 7 H2		1460	3