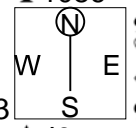


21

♠ AK104
 ♥ KJ65
 ♦ J4
 ♣ 1086
 ♠ Q975
 ♥ 104
 ♦ K8
 ♣ AK743
 ♠ 832
 ♥ AQ973
 ♦ 953
 ♣ J5
 ♠ J6
 ♥ 82
 ♦ AQ10762
 ♣ Q92

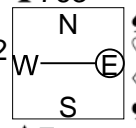


Av: NS=-60

N-S	E-W	Contract	L	N-S	E-W	IMP
1	7	2D	N 2 S2	90		4
7	1	2H	E-1 H6	50		3
2	24	2NT	N-2 S2		200	-4
24	2	3D	N-1 S2		100	-1
3	4	2NT	N-2 S8		200	-4
4	3	3NT	N 3 H7	600		12
5	21	2H	E-2 SJ	100		4
21	5	3D	N-2 CK		200	-4
6	14	1NT	S 1 S7	90		4
14	6	3Dx	S-2 CA		500	-10
8	13	3NT	N-2 S8		200	-4
13	8	2D	S 2 HT	90		4
9	11	2H	E-1 C2	50		3
11	9	3D	S-2 CA		200	-4
10	19	3D	N-1 S2		100	-1
19	10	3D	S-2 CA		200	-4
12	15	3D	N-2 CJ		200	-4
15	12	3C	N-3 S2		300	-6
16	22	2NT	W-2 DJ	100		4
22	16	2H	E-1 C6	50		3
17	23	3D	N-3 CJ		300	-6
23	17	2S	W 2 DJ		110	-2
18	26	1NTxS-1	C3		200	-4
26	18	3H	E-1 H6	50		3
20	25	3D	N 3 S2	110		5
25	20	1NT	N 4 H7	180		6

22

♠ AKQ6
 ♥ AK8
 ♦ K86
 ♣ 763
 ♠ 853
 ♥ Q10632
 ♦ 542
 ♣ 102
 ♠ J10942
 ♥ J74
 ♦ Q109
 ♣ QJ
 ♠ 7
 ♥ 95
 ♦ AJ73
 ♣ AK9854

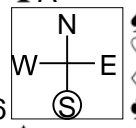


Av: NS=+1020

N-S	E-W	Contract	L	N-S	E-W	IMP
1	7	6NT	N 7 SJ	1020		0
7	1	6NT	N 7 H6	1020		0
2	24	6NT	N 7 DT	1020		0
24	2	6NT	N 7 ST	1020		0
3	4	6NT	N 7 SJ	1020		0
4	3	6NT	N 7 SJ	1020		0
5	21	5C	S 7 H2	440		-11
21	5	6NT	N 7 H3	1020		0
6	14	6NT	N 7 SJ	1020		0
14	6	6NT	N 7 SJ	1020		0
8	13	6NT	N 6 SJ	990		-1
13	8	6NT	N 7 SJ	1020		0
9	11	6NT	N 7 SJ	1020		0
11	9	6C	S 7 H2	940		-2
10	19	6NT	N 7 SJ	1020		0
19	10	6NT	N 7 DT	1020		0
12	15	7NT	N 7 SJ	1520		11
15	12	6NT	N 7 DT	1020		0
16	22	6NT	N 7 CQ	1020		0
22	16	6NT	S 7 H3	1020		0
17	23	6NT	S 7 H2	1020		0
23	17	6NT	N 7 H6	1020		0
18	26	6NT	S 7 D5	1020		0
26	18	6NT	N 7 SJ	1020		0
20	25	6NT	N 7 SJ	1020		0
25	20	6NT	N 7 SJ	1020		0

23

♠ KQ86432
 ♥ K32
 ♦ 107
 ♣ A
 ♠ J75
 ♥ AJ4
 ♦ 85
 ♣ Q9876
 ♠ A109
 ♥ 1086
 ♦ Q93
 ♣ K542
 ♠ Q975
 ♥ AKJ642
 ♣ J103

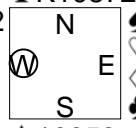


Av: NS=+560

N-S	E-W	Contract	L	N-S	E-W	IMP
1	7	4S	N 4 C4	620		2
7	1	4S	N 5 H9	650		3
2	24	4S	N 4 C3	620		2
24	2	4S	N 4 C4	620		2
3	4	4S	N 4 C4	620		2
4	3	4S	N 4 C3	620		2
5	21	4S	N 4 H8	620		2
21	5	4S	N 4 C2	620		2
6	14	4S	N 4 H3	620		2
14	6	4S	N 4 H6	620		2
8	13	4S	N 4 C4	620		2
13	8	4S	N 4 C7	620		2
9	11	4S	N 4 H6	620		2
11	9	4S	N 4 C4	620		2
10	19	4S	N 4 C4	620		2
19	10	4S	N 4 H6	620		2
12	15	4S	N 4 C4	620		2
15	12	4S	N 4 C4	620		2
16	22	4S	S-1 C5		100	-12
22	16	4S	N 4 C2	620		2
17	23	3NT	S-1 C9		100	-12
23	17	4S	N 4 C4	620		2
18	26	4S	N 4 C2	620		2
26	18	4S	N-1 C4		100	-12
20	25	4S	N 4 C4	620		2
25	20	4S	N 4 C4	620		2

24

♠ 8
 ♥ 10975
 ♦ 953
 ♣ K10872
 ♠ AQJ42
 ♥ 2
 ♦ AKJ2
 ♣ 653
 ♠ K76
 ♥ QJ8
 ♦ Q108764
 ♣ Q
 ♠ 10953
 ♥ AK643
 ♦
 ♣ AJ94



Av: NS=-100

N-S	E-W	Contract	L	N-S	E-W	IMP
1	7	4Sx	W 6 HT		790	-12
7	1	4S	E 6 H6		480	-9
2	24	4S	W 6 H7		480	-9
24	2	5Hx	S 5 DK	650		13
3	4	4S	W 5 HT		450	-8
4	3	4S	W 6 H9		480	-9
5	21	4S	W 5 HT		450	-8
21	5	4Sx	E 5 H9		690	-11
6	14	4S	W 5 HT		450	-8
14	6	4S	W 5 H5		450	-8
8	13	5Hx	S 5 DK	650		13
13	8	5Hx	S 5 DK	650		13
9	11	4S	W 5 HT		450	-8
11	9	4S	W 6 HT		480	-9
10	19	4Sx	W 5 HT		690	-11
19	10	5Hx	S 5 DA	650		13
12	15	4S	W 5 HT		450	-8
15	12	5D	E 5 HA		400	-7
16	22	6Hx	S-1 SA		100	0
22	16	5D	E 6 HK		420	-8
17	23	5Hx	S 5 DK	650		13
23	17	5Hx	S 5 DK	650		13
18	26	5Hx	S 5 DK	650		13
26	18	5Hx	S 5 DA	650		13
20	25	5Hx	S 5 DA	650		13
25	20	4Sx	W 6 HT		790	-12

25

♠AQ
 ♥A765
 ♦65
 ♣A9532
 ♠KJ10863
 ♥10843
 ♦A7
 ♣6
 ♠54
 ♥KQJ92
 ♦KJ983
 ♣4

Av: NS=+290

N-S	E-W	Contract	L	N-S	E-W	IMP
1	7	6H	N-1 SJ		50	-8
7	1	4H	N 4 H6	420		4
2	24	6H	N-2 H3		100	-9
24	2	4Sx	E-2 C3	500		5
3	4	5Hx	N 5 SJ	650		8
4	3	4Sx	E-2 C4	500		5
5	21	5H	N 5 SJ	450		4
21	5	5Hx	N 5 CK	650		8
6	14	4H	N 4 C2	420		4
14	6	5H	N-1 C6		50	-8
8	13	4H	N 5 SJ	450		4
13	8	4H	S 4 CK	420		4
9	11	5H	S-1 CK		50	-8
11	9	4Sx	E-3 C4	800		11
10	19	4H	S 4 CK	420		4
19	10	3NT	N 3 SK	400		3
12	15	3NT	N-2 C6		100	-9
15	12	4H	S-1 CK		50	-8
16	22	5H	N-1 C3		50	-8
22	16	5H	N 5 SJ	450		4
17	23	4Sx	W-2 HA	500		5
23	17	4Sx	W-2 HA	500		5
18	26	5H	S-2 CQ		100	-9
26	18	4H	N 4 DA	420		4
20	25	5Hx	S-1 CK		100	-9
25	20	4H	N 5 C6	450		4

26

♠732
 ♥A2
 ♦AKJ103
 ♣KQ3
 ♠K105
 ♥J6
 ♦9742
 ♣10874
 ♠A64
 ♥K1094
 ♦Q5
 ♣AJ52

Av: NS=+850

N-S	E-W	Contract	L	N-S	E-W	IMP
1	7	3NT	S 6 SQ	690		-4
7	1	3NT	N 6 H6	690		-4
2	24	6NT	S 6 SQ	1440		11
24	2	3NT	S 6 SJ	690		-4
3	4	3NT	S 6 SQ	690		-4
4	3	3NT	S 7 SQ	720		-4
5	21	3NT	S 6 H5	690		-4
21	5	3NT	N 6 ST	690		-4
6	14	4NT	S 6 H2	690		-4
14	6	3NT	S 6 SQ	690		-4
8	13	4NT	S 7 SQ	720		-4
13	8	3NT	N 5 SQ	660		-5
9	11	3NT	S 6 H5	690		-4
11	9	6NT	S 6 SQ	1440		11
10	19	3NT	S 6 SQ	690		-4
19	10	3NT	S 6 SQ	690		-4
12	15	4NT	S 6 SQ	690		-4
15	12	6NT	S 6 SQ	1440		11
16	22	6D	S 7 SQ	1390		11
22	16	4NT	S 6 SQ	690		-4
17	23	3NT	N 6 D7	690		-4
23	17	3NT	S 5 H3	660		-5
18	26	6NT	S 6 SQ	1440		11
26	18	4NT	S 6 H3	690		-4
20	25	6NT	S 6 SQ	1440		11
25	20	3NT	S 6 SQ	690		-4

27

♠87
 ♥J8
 ♦A952
 ♣AK1042
 ♠AK2
 ♥1062
 ♦QJ1064
 ♣Q9
 ♠J104
 ♥KQ975
 ♦87
 ♣J53
 ♠Q9653
 ♥A43
 ♦K3
 ♣876

Av: NS=+50

N-S	E-W	Contract	L	N-S	E-W	IMP
1	7	2NT	S 2 DQ	120		2
7	1	2S	S-1 H6		50	-3
2	24	2H	E 2 S2		110	-4
24	2	2S	S-1 DJ		50	-3
3	4	1NT	W-1 CK	50		0
4	3	3H	E-1 C8	50		0
5	21	2S	S-1 DQ		50	-3
21	5	2S	N-1 DQ		50	-3
6	14	2S	S 2 DQ	110		2
14	6	2H	W-1 CA	50		0
8	13	2D	W-1 CK	50		0
13	8	3C	N 3 HK	110		2
9	11	2S	S-1 DQ		50	-3
11	9	2NT	S 2 DQ	120		2
10	19	2S	S 2 DQ	110		2
19	10	2H	E-1 C6	50		0
12	15	3C	N 3 D8	110		2
15	12	3C	S 3 C9	110		2
16	22	2S	S 3 DQ	140		3
22	16	2S	S 2 DQ	110		2
17	23	2S	S 2 DQ	110		2
23	17	2H	W 2 S8		110	-4
18	26	3C	N 3 D6	110		2
26	18	2NT	S-1 DQ		50	-3
20	25	4H	E-2 DK	100		2
25	20	2H	E-1 C6	50		0

28

♠9
 ♥J1094
 ♦8753
 ♣J983
 ♠KQ8
 ♥AK72
 ♦KJ10
 ♣K42
 ♠J65
 ♥8
 ♦AQ9642
 ♣AQ7
 ♠A107432
 ♥Q653
 ♦
 ♣1065

Av: NS=-600

N-S	E-W	Contract	L	N-S	E-W	IMP
1	7	6NT	E 6 S9		990	-9
7	1	6NT	E 6 H6		990	-9
2	24	6NT	W 6 HT		990	-9
24	2	6D	W-1 S9	50		12
3	4	5D	E 6 C3		420	5
4	3	6NT	W 6 HJ		990	-9
5	21	6NT	W 6 HJ		990	-9
21	5	6NT	E 6 HJ		990	-9
6	14	6D	E-1 SA	50		12
14	6	6D	E-1 SA	50		12
8	13	6D	E-1 SA	50		12
13	8	6NT	W 6 S9		990	-9
9	11	6NT	W 6 S9		990	-9
11	9	3NT	W 6 C9		490	3
10	19	6D	E 6 H5		920	-8
19	10	6NT	W 6 S9		990	-9
12	15	6NT	W 6 HJ		990	-9
15	12	6D	W-1 S9	50		12
16	22	6NT	W 6 S9		990	-9
22	16	6D	E-1 SA	50		12
17	23	5NT	W 6 HJ		490	3
23	17	6NT	W 6 S9		990	-9
18	26	4NT	W 6 HJ		490	3
26	18	6D	W-1 S9	50		12
20	25	6D	E-1 SA	50		12
25	20	6NT	W 6 S9		990	-9

29

♠ 43
 ♥ A982
 ♦ 1032
 ♣ KJ75
 ♠ AJ9872
 ♥ 74
 ♦ J7654
 ♣
 ♠ K65
 ♥ KQ653
 ♦ AK
 ♣ 962
 ♠ Q10
 ♥ J10
 ♦ Q98
 ♣ AQ10843

Av: NS=-680

N-S	E-W	Contract	L	N-S	E-W	IMP
1	7	4S	E 6 HJ	680		0
7	1	4S	E 6 H6	680		0
2	24	4S	E 6 D2	680		0
24	2	4S	E 6 D8	680		0
3	4	4S	E 6 HJ	680		0
4	3	4S	E 6 HJ	680		0
5	21	4S	E 6 HJ	680		0
21	5	4S	E 6 HJ	680		0
6	14	4S	W 6 C2	680		0
14	6	4S	W 5 C5	650		1
8	13	2S	W 6 D2	230		10
13	8	4S	W 6 D2	680		0
9	11	4S	E 6 HJ	680		0
11	9	4S	E 6 HJ	680		0
10	19	4S	E 6 HJ	680		0
19	10	4S	E 6 HJ	680		0
12	15	4S	E 6 HJ	680		0
15	12	4S	E 6 HJ	680		0
16	22	4S	E 6 HJ	680		0
22	16	4S	E 6 S2	680		0
17	23	4S	E 6 HJ	680		0
23	17	4S	E 6 HJ	680		0
18	26	4S	E 6 HJ	680		0
26	18	4S	W 6 D2	680		0
20	25	4S	E 6 HJ	680		0
25	20	4S	E 6 HJ	680		0

30

♠ Q4
 ♥ A985
 ♦ A98
 ♣ A543
 ♠ A107653
 ♥ KJ7
 ♦ KJ
 ♣ Q10
 ♠ 92
 ♥ 643
 ♦ Q1063
 ♣ 9872
 ♠ KJ8
 ♥ Q102
 ♦ 7542
 ♣ KJ6

Av: NS=+140

N-S	E-W	Contract	L	N-S	E-W	IMP
1	7	1NT	W-3 C2	150		0
7	1	2S	E-1 H6	50		-3
2	24	1NT	S 4 D2	180		1
24	2	1NT	S 3 S3	150		0
3	4	1NT	S 1 S6	90		-2
4	3	1NT	S 3 S6	150		0
5	21	1NT	S 3 S6	150		0
21	5	1NT	N 3 S2	150		0
6	14	1NT	S 3 S5	150		0
14	6	1NT	S 1 S6	90		-2
8	13	1NT	S 3 S6	150		0
13	8	1NT	S 3 S5	150		0
9	11	1NT	S 3 S6	150		0
11	9	1NT	S 3 S6	150		0
10	19	1NT	S 3 S6	150		0
19	10	1NT	S 2 S6	120		-1
12	15	1NT	S 3 S6	150		0
15	12	1NT	S 3 S6	150		0
16	22	1NT	S 1 S3	90		-2
22	16	3C	N 3 S2	110		-1
17	23	1NT	S 2 S6	120		-1
23	17	1NT	S 3 S7	150		0
18	26	1NT	S 2 S3	120		-1
26	18	1NT	S 1 S3	90		-2
20	25	1NT	S 4 S6	180		1
25	20	2NT	S 4 S6	180		1