

17

♠ A10954
♥ Q5
♦ 853
♣ 1032

♠ 86
♥ K4
♦ KQ92
♣ AKQ98

♠ KQ
♥ J108762
♦ J764
♣ 5

♠ J732
♥ A93
♦ A10
♣ J764

18

♠ 106
♥ 97643
♦ 1065
♣ Q73

♠ AQ85
♥ A2
♦ AKJ9
♣ K86

♠ 93
♥ KQJ1085
♦ 42
♣ J104

♠ KJ742
♥
♦ Q873
♣ A952

19

♠ 2
♥ J4
♦ K10854
♣ KQ974

♠ 10976
♥ K6
♦ AJ73
♣ A62

♠ AJ5
♥ AQ932
♦ Q62
♣ 53

♠ KQ843
♥ 10875
♦ 9
♣ J108

20

♠ 1072
♥ KQ63
♦ KQ
♣ K876

♠ K943
♥ AJ109
♦ A942
♣ 4

♠ AJ
♥ 52
♦ J10765
♣ Q1092

♠ Q865
♥ 874
♦ 83
♣ AJ53

Board (17) Av: NS=-170

Contract	N-S	E-W	IMP	Tie
4H E-2	100		7	1
5D W-1	50		6	3
4H W-1	50		6	3
4H E-1	50		6	11
3S N-2		100	2	1
3H W 3		140	1	1
3H E 3		140	1	4
2H E 3		140	1	2
3S N-3		150	1	1
3H E 4		170	0	1
5D W 5		400	-6	1
4H W 4		420	-6	6
4H E 4		420	-6	10
4Sx N-3		500	-8	1

Board (18) Av: NS=-740

Contract	N-S	E-W	IMP	Tie
6H W-1	50		13	1
6H E-1	50		13	1
4H E 4		420	8	3
5H E 5		450	7	1
4H W 5		450	7	2
4H E 5		450	7	10
3NT W 5		460	7	1
4H E 6		480	6	4
3NT W 6		490	6	2
4Hx E 4		590	4	1
4Hx E 5		690	2	1
3Hx E 5		730	0	1
3Cx N-3		800	-2	1
2Sx S-3		800	-2	2
2Hx E 6		870	-4	1
4HxxE 5		1080	-8	1
4Cx N-4		1100	-8	1
3Sx S-4		1100	-8	1
3Cx N-4		1100	-8	1
2HxxE 5		1240	-11	1
3HxxE 6		1360	-12	1
5Cx N-5		1400	-12	1
4Cx S-5		1400	-12	1
4Cx N-5		1400	-12	2
3Cx S-5		1400	-12	2
3Cx N-5		1400	-12	1
2SxxS-3		1600	-13	1

Board (19) Av: NS=+100

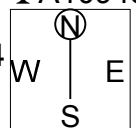
Contract	N-S	E-W	IMP	Tie
5Dx W-4	1100		14	1
4Sx E-2	500		9	1
4S E-3	300		5	1
3NT W-3	300		5	1
5H E-2	200		3	1
4Hx E-1	200		3	1
4H E-2	200		3	1
3NT W-2	200		3	16
3NT E-2	200		3	7
4H E-1	100		0	2
3NT W-1	100		0	4
2S S-1		50	-4	1
2D E 2		90	-5	1
3C S-2		100	-5	1
2H S-2		100	-5	1
2H N-2		100	-5	1
5Cx N-3		500	-12	2
3NT E 3		600	-12	1
4H E 4		620	-12	1
2Sx S-4		800	-14	1

Board (20) Av: NS=-140

Contract	N-S	E-W	IMP	Tie
2NT E-2	200		8	1
2S S 2	110		6	1
2NT E-1	100		6	1
1NT E 1		90	2	4
3S S-1		100	1	1
2S S-1		100	1	2
2C S-1		100	1	1
3D W 3		110	1	1
3D E 3		110	1	1
2D W 3		110	1	1
1NT W 2		120	1	1
1NT E 2		120	1	1
3D W 4		130	0	13
3D E 4		130	0	2
1D W 4		130	0	1
3D W 5		150	0	1
1NT E 3		150	0	1
3S S-2		200	-2	6
2H N-2		200	-2	2
3S S-3		300	-4	2
3H N-3		300	-4	1
4Sx N-4		1100	-14	1

21

♠ A853
 ♥ Q
 ♦ J109
 ♣ A10943
 ♠ J96
 ♥ AJ954
 ♦ 8765
 ♣ K
 ♠ Q2
 ♥ K10872
 ♦ A2
 ♣ QJ82
 ♠ K1074
 ♥ 63
 ♦ KQ43
 ♣ 765

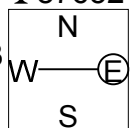


Board (21) Av: NS=-180

Contract	N-S	E-W	IMP	Tie
3S S 3	140		8	1
5Hx W-1	100		7	1
4H W-1	50		6	1
4H E-1	50		6	15
4S N-1		100	2	1
3H E 3		140	1	2
3H E 4		170	0	1
4S N-2		200	-1	6
3NT W 3		400	-6	1
4H W 4		420	-6	1
4H E 4		420	-6	16

22

♠ Q6542
 ♥ AK2
 ♦
 ♣ 87652
 ♠ J987
 ♥ Q10873
 ♦ A109
 ♣ K
 ♠ A3
 ♥ J65
 ♦ K74
 ♣ AJ1043
 ♠ K10
 ♥ 94
 ♦ QJ86532
 ♣ Q9

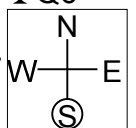


Board (22) Av: NS=-380

Contract	N-S	E-W	IMP	Tie
4Hx W-1	200		11	1
4H W-2	200		11	2
4H W-1	100		10	2
4H E-1	100		10	2
3NT E-1	100		10	2
3D S-2		100	7	1
2S N-2		100	7	2
3H W 3		140	6	2
3H E 3		140	6	1
3D S-3		150	6	1
2S N-3		150	6	1
3H W 4		170	5	1
3NT E 3		600	-6	13
4H W 4		620	-6	3
3NT E 4		630	-6	9
3NT W 5		660	-7	1
3NT E 5		660	-7	2

23

♠ AKQ632
 ♥ A972
 ♦ 6
 ♣ Q6
 ♠ 9
 ♥ KQ1054
 ♦ AQ832
 ♣ 53
 ♠ 1054
 ♥ J
 ♦ KJ4
 ♣ AK10972
 ♠ J87
 ♥ 863
 ♦ 10975
 ♣ J84

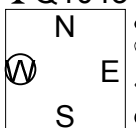


Board (23) Av: NS=-10

Contract	N-S	E-W	IMP	Tie
2Sx N 2	670		12	3
5Dx E-2	500		11	1
5C E-3	300		7	1
4H W-3	300		7	1
4H E-3	300		7	1
5D W-2	200		5	3
5D E-2	200		5	2
2S N 2	110		3	1
5D W-1	100		3	8
5D E-1	100		3	1
5C E-1	100		3	4
4S N-1		100	-3	1
3S N-1		100	-3	2
4D W 4		130	-3	1
4C E 4		130	-3	1
3C E 4		130	-3	5
3C E 5		150	-4	1
4Sx N-2		500	-10	3
3Sx N-2		500	-10	1
5D W 5		600	-11	1
5D E 5		600	-11	2
5C E 5		600	-11	1
5Cx E 5		750	-12	1

24

♠ AQJ1043
 ♥ A6
 ♦ 7
 ♣ Q1043
 ♠ 8
 ♥ QJ7
 ♦ AKQ1082
 ♣ 852
 ♠ 2
 ♥ 10984
 ♦ 64
 ♣ AKJ976
 ♠ K9765
 ♥ K532
 ♦ J953
 ♣



Board (24) Av: NS=+550

Contract	N-S	E-W	IMP	Tie
5Dx W-5	1100		11	1
5Dx W-4	800		6	1
4Sx N 6	790		6	1
5Sx S 6	750		5	1
5Sx N 6	750		5	9
5Cx E-3	500		-2	5
5S S 6	480		-2	1
5S N 6	480		-2	4
4S N 6	480		-2	21
5Cx E-2	300		-6	1
5C E-2	100		-10	1

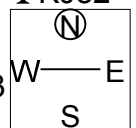
25

♠ J
♥ KJ96
♦ AKJ9
♣ KJ82

♠ A32
♥ 853
♦ 10763
♣ Q64

♠ Q986
♥ Q74
♦ 85
♣ A1053

♠ K10754
♥ A102
♦ Q42
♣ 97



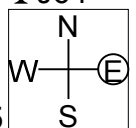
26

♠ J94
♥ 10654
♦ J106
♣ J64

♠ 65
♥ AQJ9
♦ Q
♣ AKQ975

♠ A7
♥ K732
♦ K9742
♣ 32

♠ KQ10832
♥ 8
♦ A853
♣ 108



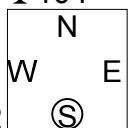
27

♠ J109863
♥ A102
♦ Q9
♣ 104

♠ KQ52
♥ 6
♦ 653
♣ J9632

♠ A
♥ KQ98
♦ KJ87
♣ A875

♠ 74
♥ J7543
♦ A1042
♣ KQ



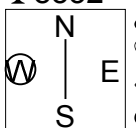
28

♠ 1075
♥ QJ
♦ KQ96
♣ 8532

♠ 943
♥ 643
♦ J87
♣ K1096

♠ KQ62
♥ 109852
♦ A
♣ AJ7

♠ AJ8
♥ AK7
♦ 105432
♣ Q4



Board (25) Av: NS=+380

Contract	N-S	E-W	IMP	Tie
3NT N 5	460		2	1
4H S 5	450		2	1
3NT S 4	430		2	2
3NT N 4	430		2	13
3NT S 3	400		1	4
3NT N 3	400		1	20
2NT N 3	150		-6	1
2D N 5	150		-6	1
3NT N-1		50	-10	2
3NT N-2		100	-10	1

Board (26) Av: NS=-720

Contract	N-S	E-W	IMP	Tie
6H E-2	200		14	1
6H E-1	100		13	1
3C W 5		150	11	1
5C W 6		620	3	2
4H W 5		650	2	4
4H E 5		650	2	12
3NT W 5		660	2	1
3NT E 5		660	2	5
4H W 6		680	1	1
4H E 6		680	1	12
6H E 6		1430	-12	6

Board (27) Av: NS=-160

Contract	N-S	E-W	IMP	Tie
5C W-1	50		5	1
5C E-1	50		5	2
4C W-1	50		5	1
4C E-1	50		5	1
3NT W-1	50		5	2
3C W-1	50		5	1
3S N-1		50	3	1
2S S-1		50	3	1
2Sx N-1		100	2	2
2Hx S-1		100	2	1
3C E 3		110	2	3
3C W 4		130	1	4
3C E 4		130	1	13
4C W 5		150	0	1
4C E 5		150	0	1
3C E 5		150	0	1
3NT W 3		400	-6	3
3NT W 4		430	-7	2
3NT E 4		430	-7	4
3Sx N-3		500	-8	1

Board (28) Av: NS=-50

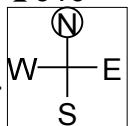
Contract	N-S	E-W	IMP	Tie
3NT S 3	600		12	1
2NT S 2	120		5	2
3D N 3	110		4	2
2H W-2	100		4	1
1NT W-2	100		4	2
1NT S 1	90		4	2
2H W-1	50		3	2
1H E 1		80	-1	4
1NT E 1		90	-1	1
3D S-1		100	-2	2
3D N-1		100	-2	2
2NT N-1		100	-2	1
2H W 2		110	-2	4
2H E 2		110	-2	7
1H E 2		110	-2	11
1NT W 2		120	-2	1
2S N-2		200	-4	1

29

♠ A95
♥ AQJ874
♦ 107
♣ J10

♠ Q108
♥ K5
♦ 632
♣ KQ954

♠ KJ7
♥ 96
♦ KQJ9
♣ 7632



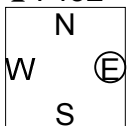
30

♠ KQ7
♥ A10
♦ AJ74
♣ 7432

♠ A96432
♥ KJ
♦ 10
♣ KQ98

♠ 8
♥ 9873
♦ KQ962
♣ A106

♠ J105
♥ Q6542
♦ 853
♣ J5



Board (29) Av: NS=+110

Contract	N-S	E-W	IMP	Tie
3C E-3	300		5	1
2H N 4	170		2	1
2NT S 3	150		1	1
3H N 3	140		1	15
2H N 3	140		1	21
2NT S 2	120		0	1
4H N-1		100	-5	1
3NT S-1		100	-5	3
3NT S-3		300	-9	2

Board (30) Av: NS=-130

Contract	N-S	E-W	IMP	Tie
4Sx E-1	100		6	1
2S E-1	50		5	1
2D E 2		90	1	1
2C W 2		90	1	3
2H S-2		100	1	1
2H N-2		100	1	1
1NT N-2		100	1	1
3C W 3		110	1	2
3C E 3		110	1	1
2S W 2		110	1	1
2C W 3		110	1	1
2D E 4		130	0	1
2S W 3		140	0	14
2S E 3		140	0	2
2H N-3		150	-1	2
2C W 5		150	-1	1
2S W 4		170	-1	10
2NT E 4		180	-2	1
3D S-4		200	-2	1

18th NEC CUP Qualifying Round 10 Thursday, April 18, 2013

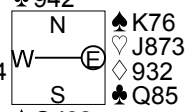
38

♠ 1093
♥ K109542
♦ 8
♣ 942

♠ A54
♥ A6
♦ KJ10764
♣ K6

♠ K76
♥ J873
♦ 932
♣ Q85

♠ QJ82
♥ Q
♦ AQ5
♣ AJ1073



Board (38)
N-S E-W Contract L N-S E-W IMP
42 47 3D W-1 C2 100
47 42 3H N-1 D3 50

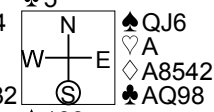
39

♠ K872
♥ QJ1082
♦ J73
♣ 5

♠ A954
♥ K75
♦ 106
♣ 10732

♠ QJ6
♥ A
♦ A8542
♣ AQ98

♠ 103
♥ 9643
♦ KQ9
♣ KJ64



Board (39)
N-S E-W Contract L N-S E-W IMP
42 47 2C E 2 ST 90
47 42 3Hx N-2 DA 500

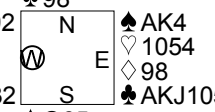
40

♠ 873
♥ J983
♦ Q765
♣ 98

♠ J1092
♥ Q7
♦ K2
♣ 76432

♠ AK4
♥ 1054
♦ 98
♣ AKJ105

♠ Q65
♥ AK62
♦ AJ1043
♣ Q



Board (40)
N-S E-W Contract L N-S E-W IMP
42 47 1NT E 4 DJ 180
47 42 4H S-1 SJ 50

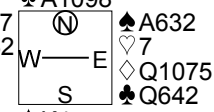
41

♠ Q95
♥ AKQJ
♦ AK
♣ A1098

♠ J1087
♥ 98632
♦ 32
♣ J7

♠ A632
♥ 7
♦ Q1075
♣ Q642

♠ K4
♥ 1054
♦ J9864
♣ K53



Board (41)
N-S E-W Contract L N-S E-W IMP
42 47 3NT N 3 S2 400
47 42 3NT N 4 S2 430

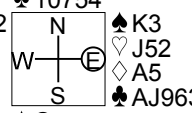
42

♠ 974
♥ AK4
♦ 862
♣ 10754

♠ AJ108652
♥ Q1096
♦ 94
♣

♠ K3
♥ J52
♦ A5
♣ AJ9632

♠ Q
♥ 873
♦ KQJ1073
♣ KQ8



Board (42)
N-S E-W Contract L N-S E-W IMP
42 47 4S W 5 HK 650
47 42 4D S-2 SA 200

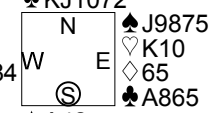
43

♠ KQ6
♥ Q3
♦ 732
♣ KJ1072

♠ 103
♥ J5
♦ AJ10984
♣ 943

♠ J9875
♥ K10
♦ 65
♣ A865

♠ A42
♥ A987642
♦ KQ
♣ Q



Board (43)
N-S E-W Contract L N-S E-W IMP
42 47 4H S 4 ST 420
47 42 4H S 5 ST 450

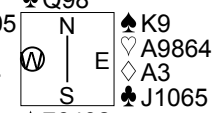
44

♠ 8
♥ KQJ7
♦ KJ1098
♣ Q98

♠ AQJ105
♥ 1052
♦ Q7654
♣

♠ K9
♥ A9864
♦ A3
♣ J1065

♠ 76432
♥ 3
♦ 2
♣ AK7432



Board (44)
N-S E-W Contract L N-S E-W IMP
42 47 3NT N-1 H9 100
47 42 5C S-3 HT 300