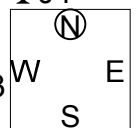


1

♠ 82  
 ♥ KJ9753  
 ♦ J97  
 ♣ J4  
 ♠ 7  
 ♥ AQ42  
 ♦ AQ863  
 ♣ AK6  
 ♠ AQ1064  
 ♥ 1086  
 ♦ 2  
 ♣ 10752  
 ♠ KJ953  
 ♥  
 ♦ K1054  
 ♣ Q983

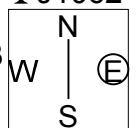


Board (1) Av: NS=-60

Contract	N-S	E-W	IMP	Tie
3NT W-4	200		6	1
3D W-4	200		6	1
6C E-3	150		5	1
3NT W-3	150		5	2
3NTxW-1	100		4	2
3NT W-2	100		4	9
3NT E-2	100		4	2
3D W-2	100		4	2
3NT W-1	50		3	11
2NT W 2		120	-2	1
2H S-4		200	-4	1
2H N-5		250	-5	2
2Sx S-2		300	-6	1
2H S-6		300	-6	1
1Sx S-2		300	-6	1
3NT W 3		400	-8	3
2Sx S-3		500	-10	2
2Sx N-3		500	-10	1
2Sx S-4		800	-12	1
3DX N-5		1100	-14	1

2

♠ AQJ10  
 ♥ J  
 ♦ Q1054  
 ♣ J1062  
 ♠ K97  
 ♥ 107653  
 ♦ 986  
 ♣ 98  
 ♠ 6532  
 ♥ AQ42  
 ♦ 7  
 ♣ Q743  
 ♠ 84  
 ♥ K98  
 ♦ AKJ32  
 ♣ AK5

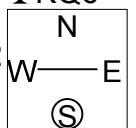


Board (2) Av: NS=+800

Contract	N-S	E-W	IMP	Tie
6D S 6	1370		11	10
4Hx W-5	1100		7	2
4Hx W-4	800		0	1
3NT S 6	690		-3	2
3NT S 5	660		-4	4
4NT S 4	630		-5	1
3NT S 4	630		-5	8
5D S 6	620		-5	1
5D N 6	620		-5	1
3NT S 3	600		-5	12
3NT N 3	600		-5	4

3

♠ K109  
 ♥ 7  
 ♦ KQ10973  
 ♣ KQ6  
 ♠ J  
 ♥ Q95432  
 ♦  
 ♣ AJ9542  
 ♠ Q86542  
 ♥ 1086  
 ♦ A65  
 ♣ 7  
 ♠ A73  
 ♥ AKJ  
 ♦ J842  
 ♣ 1083

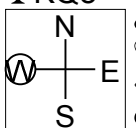


Board (3) Av: NS=+80

Contract	N-S	E-W	IMP	Tie
5Hx E-3	800		12	1
5Hx E-2	500		9	2
4Hx E-2	500		9	1
3NT S 5	460		9	5
3NT N 5	460		9	2
3NT S 4	430		8	3
5D N 5	400		8	1
5Hx W-1	200		3	2
5Hx E-1	200		3	1
4Hx W-1	200		3	1
3Hx W-1	200		3	1
5D S-1		50	-4	8
5D N-1		50	-4	4
6D N-2		100	-5	1
5Dx S-1		100	-5	1
5Dx N-1		100	-5	5
5D S-2		100	-5	2
5Dx S-2		300	-9	1
3Hx W 3		730	-13	1
4Hx W 4		790	-13	1
4Hx E 4		790	-13	1
3Hx W 4		930	-14	1

4

♠ AK876  
 ♥ 4  
 ♦ 8762  
 ♣ KQ8  
 ♠ Q3  
 ♥ AK10532  
 ♦ 10543  
 ♣ 6  
 ♠ 1042  
 ♥ 9876  
 ♦ AKJ  
 ♣ 1075  
 ♠ J95  
 ♥ QJ  
 ♦ Q9  
 ♣ AJ9432



Board (4) Av: NS=+300

Contract	N-S	E-W	IMP	Tie
4S N 5	650		8	2
4S N 4	620		8	12
5Hx W-2	500		5	2
5H W-2	200		-3	2
3S N 5	200		-3	4
3S N 4	170		-4	9
3S N 3	140		-4	8
4C S 4	130		-5	1
3C S 4	130		-5	2
4H W-1	100		-5	1
Passout			-7	1
4S N-1		100	-9	1
4H W 4		620	-14	1

**5**

♠ 109873  
♥ K743  
♦ A3  
♣ J10

♠ 6542  
♥ 6  
♦ QJ87  
♣ 8652

♠ AK  
♥ Q108  
♦ 1094  
♣ AK743

♠ QJ  
♥ AJ952  
♦ K652  
♣ Q9

**6**

♠ 975  
♥ AKJ2  
♦ 109  
♣ QJ64

♠ AJ64  
♥ Q63  
♦ K842  
♣ 75

♠ 10  
♥ 1098  
♦ QJ75  
♣ AK982

♠ KQ832  
♥ 754  
♦ A63  
♣ 103

**7**

♠ A53  
♥ 2  
♦ K9654  
♣ KJ42

♠ 964  
♥ KJ963  
♦ 2  
♣ 9753

♠ Q102  
♥ Q1085  
♦ QJ  
♣ A1086

♠ KJ87  
♥ A74  
♦ A10873  
♣ Q

**8**

♠ 863  
♥ 54  
♦ 10652  
♣ AK96

♠ 94  
♥ KJ83  
♦ AQJ9  
♣ J83

♠ AQJ5  
♥ Q1092  
♦ 73  
♣ 542

♠ K1072  
♥ A76  
♦ K84  
♣ Q107

Board (5) Av: NS=-30

Contract	N-S	E-W	IMP	Tie
3H S 3	140		5	7
3H N 3	140		5	1
2H S 2	110		4	1
2H N 2	110		4	1
1NT E-1	50		2	6
2D E 2		90	-2	3
1NT E 1		90	-2	19
3H S-1		100	-2	2
3H N-1		100	-2	1
1NT E 2		120	-3	2
4C E 4		130	-3	1
3C E 4		130	-3	1
4Hx S-1		200	-5	1

Board (6) Av: NS=-10

Contract	N-S	E-W	IMP	Tie
1NTxS 2	280		7	1
1NT N 2	120		4	1
2H N 2	110		3	1
3D W-1	100		3	1
3D E-1	100		3	1
2C E-1	100		3	2
1S S 1	80		3	1
Passout			0	23
2S S-1		50	-1	5
2S N-1		50	-1	3
3S S-2		100	-3	2
2Sx S-1		100	-3	1
3D W 3		110	-3	1
3D E 3		110	-3	2
2Dx W 2		180	-5	1

Board (7) Av: NS=+800

Contract	N-S	E-W	IMP	Tie
6D S 7	1390		11	2
6D N 7	1390		11	1
6D S 6	1370		11	8
6D N 6	1370		11	1
3NT S 6	690		-3	1
3NT N 6	690		-3	3
3NT N 5	660		-4	1
5D S 7	640		-4	2
5D N 7	640		-4	1
3NT S 4	630		-5	7
3NT N 4	630		-5	4
5D S 6	620		-5	8
5D N 6	620		-5	1
4S S 4	620		-5	1
3NT S 3	600		-5	1
3NT N 3	600		-5	1
3D S 6	170		-12	2
3NT S-1		100	-14	1

Board (8) Av: NS=-100

Contract	N-S	E-W	IMP	Tie
3H W-1	50		4	1
3H E-1	50		4	3
3C N-1		50	2	1
2S S-1		50	2	1
2S N-1		50	2	2
1NT W 1		90	0	3
3C N-2		100	0	9
2S S-2		100	0	2
2NT N-2		100	0	1
2H W 2		110	0	2
2H E 2		110	0	3
3H W 3		140	-1	1
3H E 3		140	-1	3
2H W 3		140	-1	1
2H E 3		140	-1	9
3C N-3		150	-2	1
3H E 4		170	-2	1
2H E 4		170	-2	2

9

♠4  
♥KQJ8762  
♦K65  
♣Q8

♠K102  
♥93  
♦AQ97  
♣A742

♠AQJ7  
♥A104  
♦J842  
♣K3

♠98653  
♥5  
♦103  
♣J10965

10

♠54  
♥KQ8  
♦J105  
♣K10843

♠Q76  
♥J104  
♦A986432  
♣

♠A1082  
♥9632  
♦K  
♣QJ96

♠KJ93  
♥A75  
♦Q7  
♣A752

11

♠108  
♥A954  
♦QJ7  
♣AQ104

♠9652  
♥K6  
♦953  
♣9762

♠A43  
♥Q1032  
♦A82  
♣KJ8

♠KQJ7  
♥J87  
♦K1064  
♣53

12

♠KJ975  
♥873  
♦Q5  
♣AK7

♠Q864  
♥KQJ  
♦K2  
♣9863

♠A3  
♥9642  
♦109864  
♣54

♠102  
♥A105  
♦AJ73  
♣QJ102

Board (9) Av: NS=-320

Contract	N-S	E-W	IMP	Tie
6S E-3	300		12	1
5C W-3	300		12	1
4S E-2	200		11	1
6NT E-1	100		9	1
6D E-1	100		9	1
4S W-1	100		9	1
4S E-1	100		9	2
3NT E-1	100		9	7
2H N-1		50	7	1
4H N-3		150	5	2
4H N-4		200	3	1
3Hx N-2		300	1	1
4Hx N-3		500	-5	5
5D E 5		600	-7	3
3NT E 3		600	-7	2
4S W 4		620	-7	1
4S E 4		620	-7	3
3NT E 4		630	-7	10
4Hx N-4		800	-10	2

Board (10) Av: NS=-40

Contract	N-S	E-W	IMP	Tie
4D W-2	200		6	1
2S E-2	200		6	1
2NT S 2	120		4	2
3C S 3	110		4	8
3D W-1	100		4	4
2H E-1	100		4	1
1NT S 1	90		4	2
4C S-1		100	-2	2
3NT N-1		100	-2	2
3C S-1		100	-2	5
2C N-1		100	-2	1
1NT N-1		100	-2	2
3D W 3		110	-2	3
5C S-2		200	-4	2
4Cx S-1		200	-4	1
4C S-2		200	-4	1
3Sx S-1		200	-4	1
3C S-2		200	-4	2
3C N-2		200	-4	2
2NT S-2		200	-4	1
5C S-3		300	-6	1
4Cx N-3		800	-13	1

Board (11) Av: NS=+190

Contract	N-S	E-W	IMP	Tie
2Cx E-3	500		7	1
1NTx E-3	500		7	4
3NT S 3	400		5	1
1NTx N 3	380		5	1
1Sx W-2	300		3	2
2NT E-4	200		0	1
1NT N 4	180		0	4
2NT N 3	150		-1	1
2H E-3	150		-1	1
1NT S 3	150		-1	1
1NT N 3	150		-1	18
2H N 3	140		-2	1
1NT N 2	120		-2	4
2Sx W-1	100		-3	1
2S W-2	100		-3	1
1Sx W-1	100		-3	1
3NT N-1		50	-6	1
2NT S-1		50	-6	1
2H N-1		50	-6	1

Board (12) Av: NS=+110

Contract	N-S	E-W	IMP	Tie
3NT N 4	630		11	2
3NT S 3	600		10	11
2Dx E-3	500		9	1
2S N 4	170		2	1
1NT W-3	150		1	1
2NT S 2	120		0	1
4S N-1		100	-5	1
3NT S-1		100	-5	13
3NT N-1		100	-5	9
4S N-2		200	-7	1
3S N-2		200	-7	1
3NT S-2		200	-7	2
3NT N-2		200	-7	2

13

♠8742  
♥Q10  
♦A109754  
♣9

♠5  
♥J7652  
♦J8  
♣AQJ52

♠KJ  
♥A983  
♦K  
♣K108763

♠AQ10963  
♥K4  
♦Q632  
♣4

Diagram: A square with 'N' at top, 'S' at bottom, 'W' on left, 'E' on right. A vertical line connects N and S, and a horizontal line connects W and E. They intersect at the center.

14

♠A9  
♥J95  
♦KJ5  
♣AQ1086

♠K52  
♥KQ  
♦9  
♣KJ95432

♠108  
♥A864  
♦AQ8432  
♣7

♠QJ7643  
♥10732  
♦1076  
♣

Diagram: A square with 'N' at top, 'S' at bottom, 'W' on left, 'E' on right. A vertical line connects N and S, and a horizontal line connects W and E. They intersect at the center.

Board (13) Av: NS=+160

Contract	N-S	E-W	IMP	Tie
5Sx S 5	850		12	1
5S S 6	680		11	1
4S S 6	680		11	2
5S S 5	650		10	3
4S S 5	650		10	1
4S S 4	620		10	4
6Cx E-2	500		8	1
3S S 3	140		-1	1
5H W-1	100		-2	4
5H E-1	100		-2	7
5C W-1	100		-2	1
5C E-1	100		-2	11
4S S-1	100	100	-6	1
6Sx S-1	200	200	-8	1
5Sx S-1	200	200	-8	2
4H W 4	620	620	-13	4
4H E 4	620	620	-13	1

Board (14) Av: NS=+70

Contract	N-S	E-W	IMP	Tie
5Dx E-3	500		10	1
5Cx W-3	500		10	1
5Cx E-3	500		10	2
4Cx W-3	500		10	1
5Dx E-2	300		6	1
4Cx W-2	300		6	1
3Cx W-2	300		6	1
3NT W-4	200		4	1
4D E-3	150		2	2
3NT W-3	150		2	1
4C W-2	100		1	1
3NT W-2	100		1	4
3NT E-2	100		1	1
3H W-2	100		1	1
3H E-2	100		1	1
3D E-2	100		1	2
3Cx W-1	100		1	1
3C W-2	100		1	1
3NT W-1	50		-1	8
3NT E-1	50		-1	1
3D E-1	50		-1	1
3C W-1	50		-1	1
3D E 3	110	110	-5	2
4S S-3	150	150	-6	1
4S N-3	150	150	-6	1
3S N-3	150	150	-6	1
3NT N-3	150	150	-6	1
2H S-3	150	150	-6	1
3NT W 3	400	400	-10	1
4Sx S-3	500	500	-11	1
3Sx S-3	500	500	-11	1
4Sx S-4	800	800	-13	1

18th NEC CUP Qualifying Round 11 Thursday, April 18, 2013

36

♠ 84  
♥ 52  
♦ AJ9862  
♣ A97

♠ 9765  
♥ A63  
♦ KQ1043  
♣ 3

♠ Q103  
♥ KJ1074  
♦ 5  
♣ K864

♠ AKJ2  
♥ Q98  
♦ 7  
♣ QJ1052

Board (36)

N-S	E-W	Contract	L	N-S	E-W	IMP
33	42	3NT N-2	D3	200		
42	33	2D N-2	HJ	200		

37

♠ AJ95  
♥ 962  
♦ 9432  
♣ A5

♠ Q6  
♥ 754  
♦ Q5  
♣ KQJ1064

♠ 8742  
♥ AKJ  
♦ A7  
♣ 8732

♠ K103  
♥ Q1083  
♦ KJ1086  
♣ 9

Board (37)

N-S	E-W	Contract	L	N-S	E-W	IMP
33	42	3C E 3	S3	110		
42	33	4C E 4	D6	130		

38

♠ AQ952  
♥ Q2  
♦ 952  
♣ KJ4

♠ K73  
♥ AJ1096  
♦ Q86  
♣ A9

♠ 4  
♥ 8543  
♦ A4  
♣ Q87632

♠ J1086  
♥ K7  
♦ KJ1073  
♣ 105

Board (38)

N-S	E-W	Contract	L	N-S	E-W	IMP
33	42	4S N-2	DA	100		
42	33	3S N 3	DA	140		

39

♠ J9852  
♥ 8  
♦ J9743  
♣ Q9

♠ 76  
♥ AKQ653  
♦ 6  
♣ J653

♠ KQ  
♥ 1092  
♦ A1052  
♣ AK42

♠ A1043  
♥ J74  
♦ KQ8  
♣ 1087

Board (39)

N-S	E-W	Contract	L	N-S	E-W	IMP
33	42	4H W 6	S5	680		
42	33	4H W 6	S2	680		

40

♠ AQ862  
♥ 7  
♦ 42  
♣ AK954

♠ K5  
♥ J963  
♦ J9876  
♣ 87

♠ J1097  
♥ A54  
♦ KQ53  
♣ J3

♠ 43  
♥ KQ1082  
♦ A10  
♣ Q1062

Board (40)

N-S	E-W	Contract	L	N-S	E-W	IMP
33	42	3H S 3	C8	140		
42	33	4S N-1	DK	50		

41

♠ 73  
♥ 1097  
♦ K106542  
♣ 52

♠ AJ  
♥ J6542  
♦ AQ  
♣ Q1094

♠ K652  
♥ Q8  
♦ 73  
♣ AK876

♠ Q10984  
♥ AK3  
♦ J98  
♣ J3

Board (41)

N-S	E-W	Contract	L	N-S	E-W	IMP
33	42	3NT E 3	ST	600		
42	33	4H W-1	S7	100		

42

♠ K  
♥ AQ53  
♦ AQJ72  
♣ J32

♠ A9754  
♥ J9642  
♦ 5  
♣ A7

♠ 8  
♥ K1087  
♦ 1093  
♣ KQ1054

♠ QJ10632  
♥  
♦ K864  
♣ 986

Board (42)

N-S	E-W	Contract	L	N-S	E-W	IMP
33	42	4S S-2	CA	200		
42	33	2S W-1	C2	100		