

**17**

♠ 742  
♥ 76  
♦ J10843  
♣ AJ8

♠ KQ6  
♥ J9  
♦ 976  
♣ Q9532

♠ 10853  
♥ AQ83  
♦ KQ5  
♣ 64

♠ (N)  
♥ W E  
♦ S

♠ AJ9  
♥ K10542  
♦ A2  
♣ K107

**18**

♠ AK2  
♥ A972  
♦ 3  
♣ A10543

♠ 643  
♥ 1063  
♦ J1086  
♣ K72

♠ Q8  
♥ KQ8  
♦ AQ754  
♣ QJ9

♠ N  
♥ W E  
♦ S

♠ J10975  
♥ J54  
♦ K92  
♣ 86

**19**

♠ 854  
♥ K107  
♦ AQ3  
♣ QJ98

♠ K62  
♥ 543  
♦ 108754  
♣ K4

♠ Q7  
♥ AQ862  
♦ J6  
♣ A1065

♠ N  
♥ W E  
♦ S

♠ AJ1093  
♥ J9  
♦ K92  
♣ 732

**20**

♠ A  
♥ 9762  
♦ J  
♣ AK87432

♠ K87432  
♥ K5  
♦ Q972  
♣ 6

♠ 65  
♥ Q43  
♦ K108643  
♣ J10

♠ N  
♥ W E  
♦ S

♠ QJ109  
♥ AJ108  
♦ A5  
♣ Q95

Board (17) Av: NS=+60

Contract	N-S	E-W	IMP	Tie
3S	W-4	200	4	1
3D	E-4	200	4	1
3C	W-3	150	3	1
2C	W-3	150	3	1
1NT	W-3	150	3	1
1NT	N 3	150	3	1
1NT	E-3	150	3	1
2NT	N 2	120	2	1
1NT	S 2	120	2	4
1H	S 2	110	2	5
3C	E-2	100	1	1
1NT	E-2	100	1	1
2D	N 2	90	1	1
1NT	S 1	90	1	5
1NT	N 1	90	1	2
1H	S 1	80	1	3
2S	E-1	50	0	1
1S	E-1	50	0	1
1NT	E-1	50	0	1
2H	S-1	50	-3	5
2D	S-1	50	-3	1
1NT	S-1	50	-3	2
1NT	N-1	50	-3	1
1S	E 1	80	-4	1
1NT	E 1	90	-4	1
1NT	S-2	100	-4	1
1S	E 2	110	-5	1

Board (18) Av: NS=+90

Contract	N-S	E-W	IMP	Tie
4S	S 4	620	11	1
1NT	E-4	200	3	2
3S	S 4	170	2	3
2S	S 4	170	2	1
3D	E-3	150	2	1
1NT	E-3	150	2	5
3S	S 3	140	2	1
2H	S 2	110	1	1
2H	N 2	110	1	4
3D	E-2	100	0	1
1NT	E-2	100	0	16
1H	E-2	100	0	1
2D	E-1	50	-1	1
1NT	E-1	50	-1	1
2D	E 2	90	-5	1
1D	W 2	90	-5	1
4H	S-1	100	-5	1
3H	S-1	100	-5	1
3D	E 3	110	-5	1
3C	N-2	200	-7	1
1NTXE	2	280	-9	1

Board (19) Av: NS=0

Contract	N-S	E-W	IMP	Tie
4H	E-2	200	5	2
2S	S 3	140	4	2
2S	S 2	110	3	6
2S	N 2	110	3	2
1S	S 2	110	3	1
3H	E-1	100	3	3
1NT	N 1	90	3	1
3S	S-1	50	-2	3
2S	S-1	50	-2	14
2S	N-1	50	-2	2
1NT	N-1	50	-2	1
3S	S-2	100	-3	5
2NT	N-2	100	-3	1
2H	E 2	110	-3	1
2NT	E 2	120	-3	1
2Hx	E 2	670	-12	1

Board (20) Av: NS=+690

Contract	N-S	E-W	IMP	Tie
6NT	S 6	1440	13	1
6H	N 6	1430	12	1
6C	N 6	1370	12	1
3NT	S 6	690	0	6
3NT	N 6	690	0	1
5H	S 6	680	0	1
5H	N 6	680	0	1
4H	S 6	680	0	8
4H	N 6	680	0	2
3NT	S 5	660	-1	1
5H	N 5	650	-1	1
4H	S 5	650	-1	2
4NT	S 4	630	-2	1
3NT	S 4	630	-2	16
3NT	N 4	630	-2	1
5C	N 6	620	-2	2

**21**

♠ J72  
♥ KQ83  
♦ 8  
♣ A9853

♠ 963    ♠ AQ1054  
♥ AJ62    ♥ 107  
♦ 7532    ♦ 9  
♣ 106    ♣ KJ742

♠ K8  
♥ 954  
♦ AKQJ1064  
♣ Q

**22**

♠ KJ1052  
♥ A104  
♦ 7  
♣ J1093

♠ 63    ♠ A9  
♥ Q8765    ♥ KJ3  
♦ AQ1042    ♦ J65  
♣ 2    ♣ KQ864

♠ Q874  
♥ 92  
♦ K983  
♣ A75

**23**

♠ A85  
♥ J9  
♦ 93  
♣ 1076543

♠ K10964    ♠ 72  
♥ AQ75    ♥ K106  
♦ QJ    ♦ 10765  
♣ QJ    ♣ A982

♠ QJ3  
♥ 8432  
♦ AK842  
♣ K

**24**

♠ J9  
♥ A10  
♦ KJ98652  
♣ Q8

♠ AK1054    ♠ Q86  
♥ K53    ♥ QJ987  
♦ 73    ♦ Q4  
♣ 632    ♣ 1075

♠ 732  
♥ 642  
♦ A10  
♣ AKJ94

Board (21) Av: NS=+410

Contract	N-S	E-W	IMP	Tie
4NT S 5	660		6	1
3NT S 5	660		6	1
3NT N 5	660		6	1
4NT N 4	630		6	2
3NT S 4	630		6	5
3NT N 4	630		6	2
5D S 5	600		5	2
3NT S 3	600		5	11
3NT N 3	600		5	2
4Sx E-2	300		-3	3
4S E-4	200		-5	1
4S E-3	150		-6	1
4D S 5	150		-6	1
3D S 5	150		-6	7
4D S 4	130		-7	1
5D S-1		100	-11	2
4NT S-1		100	-11	1
3NT S-1		100	-11	1
6H N-4		400	-13	1

Board (22) Av: NS=-120

Contract	N-S	E-W	IMP	Tie
2S N 4	170		7	1
3S N 3	140		6	5
2S N 3	140		6	1
5H E-1	100		6	1
4H W-1	100		6	1
4H E-1	100		6	8
4S N-1		50	2	4
3S N-1		50	2	2
4Sx N-1		100	1	7
4S N-2		100	1	3
1NT E 2		120	0	1
3H W 4		170	-2	1
3H E 4		170	-2	1
4Sx S-2		300	-5	1
4H W 4		620	-11	7
4H E 4		620	-11	1
4H E 5		650	-11	1

Board (23) Av: NS=-50

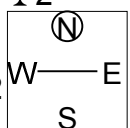
Contract	N-S	E-W	IMP	Tie
3S W-2	200		6	1
2H E-2	200		6	2
2C E-2	200		6	2
1S W-2	200		6	1
3NT E-1	100		4	1
2H W-1	100		4	1
1S W-1	100		4	2
2C S 2		90	4	1
1S W 1		80	-1	8
2D S-1		100	-2	1
2C S-1		100	-2	1
1NT N-1		100	-2	1
2S E 2		110	-2	2
1S W 2		110	-2	17
2NT E 2		120	-2	1
1S W 3		140	-3	1
2D S-2		200	-4	1
3D S-3		300	-6	1
1NT N-3		300	-6	1

Board (24) Av: NS=+190

Contract	N-S	E-W	IMP	Tie
3NT S 7	520		8	1
3NT N 7	520		8	2
5D N 7	440		6	5
5D N 6	420		6	1
5D N 5	400		5	4
4D N 7	190		0	2
3D N 7	190		0	11
3S W-3	150		-1	1
3D N 5	150		-1	4
3C S 5	150		-1	1
3S W-2	100		-3	1
3H W-2	100		-3	1
2S W-1		50	-4	1
5D N-1		50	-6	1
4D N-1		50	-6	1
3NT S-1		50	-6	4
3NT N-1		50	-6	1
5D N-2		100	-7	1
3NT N-2		100	-7	2
5Dx N-2		300	-10	1

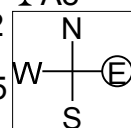
25

♠ Q1098  
 ♥ 87432  
 ♦ Q73  
 ♣ 2  
 ♠ K  
 ♥ K96  
 ♦ KJ9652  
 ♣ 1096  
 ♠ 54  
 ♥ Q105  
 ♦ A84  
 ♣ AJ854  
 ♠ AJ7632  
 ♥ AJ  
 ♦ 10  
 ♣ KQ73



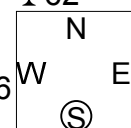
26

♠ QJ76  
 ♥ AJ10642  
 ♦ 8  
 ♣ A8  
 ♠ A432  
 ♥ 53  
 ♦ Q965  
 ♣ K97  
 ♠ K9  
 ♥ Q87  
 ♦ AKJ3  
 ♣ J532  
 ♠ 1085  
 ♥ K9  
 ♦ 10742  
 ♣ Q1064



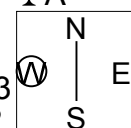
27

♠ A8743  
 ♥ Q3  
 ♦ A753  
 ♣ 62  
 ♠ 6  
 ♥ J7652  
 ♦ J10986  
 ♣ 74  
 ♠ KQJ10952  
 ♥ 98  
 ♦  
 ♣ AKJ3  
 ♠  
 ♥ AK104  
 ♦ KQ42  
 ♣ Q10985



28

♠ 10643  
 ♥ KJ9865  
 ♦ K2  
 ♣ A  
 ♠ J82  
 ♥ Q7  
 ♦ 10543  
 ♣ KQJ2  
 ♠ AKQ7  
 ♥ 4  
 ♦ QJ876  
 ♣ 976  
 ♠ 95  
 ♥ A1032  
 ♦ A9  
 ♣ 108543



Board (25) Av: NS=+210

Contract	N-S	E-W	IMP	Tie
4S S 4	420		5	22
4S N 4	420		5	2
5D W-2	200		0	1
3S S 4	170		-1	1
4S S-1		50	-6	18
4S N-1		50	-6	1
5Sx S-1		100	-7	1

Board (26) Av: NS=+60

Contract	N-S	E-W	IMP	Tie
2Hx N 3	870		13	1
2Sx S 2	670		12	1
2Hx N 2	670		12	1
3NT E-2	200		4	3
2NT E-2	200		4	1
3H N 3	140		2	5
2H N 3	140		2	1
2H N 2	110		2	9
3NT E-1	100		1	2
3D E-1	100		1	2
2NT E-1	100		1	3
2S S-1		100	-4	1
3D W 3		110	-5	2
3D E 3		110	-5	10
2NT E 2		120	-5	2
3Hx N-1		200	-6	1
2S S-2		200	-6	1

Board (27) Av: NS=+110

Contract	N-S	E-W	IMP	Tie
5Sx E-3	500		9	1
5Sx E-2	300		5	1
4Sx W-2	300		5	1
4Sx E-2	300		5	19
5S E-3	150		1	1
4Sx E-1	100		0	6
4S E-2	100		0	2
3S E-2	100		0	1
3S E-1	50		-2	1
3NT N-2		100	-5	2
2S E 2		110	-6	2
3S E 3		140	-6	1
2S E 3		140	-6	1
2H E 4		170	-7	1
5Cx S-2		300	-9	1
4Dx S-2		300	-9	1
3NTxS-2		300	-9	1
4S E 4		420	-11	1
2Sx E 2		470	-11	1
5DxxN-2		600	-12	1

Board (28) Av: NS=+470

Contract	N-S	E-W	IMP	Tie
4Cx W-4	800		8	1
4H S 5	650		5	1
4H N 5	650		5	25
4Sx W-3	500		1	1
5Dx E-2	300		-5	2
3H N 5	200		-7	7
2H N 5	200		-7	4
3H N 4	170		-7	1
4S E-2	100		-9	1
3S E-2	100		-9	1
4D W-1	50		-9	1
4D E-1	50		-9	1

29

♠ KJ86  
♥ K2  
♦ A98  
♣ 10642

♠ Q43  
♥ 97  
♦ 7642  
♣ A985

♠ 2  
♥ AQJ8653  
♦ KJ5  
♣ K3

♠ A10975  
♥ 104  
♦ Q103  
♣ QJ7

	N	
W	—	E
	S	

Board (29) Av: NS=-90

Contract	N-S	E-W	IMP	Tie
4H	E-2	200	7	2
3S	S 3	140	6	1
3S	N 3	140	6	4
4H	E-1	100	5	10
3H	E-1	100	5	1
4S	N-1	100	0	2
3S	S-1	100	0	6
3S	N-1	100	0	3
3H	E 3	140	-2	8
3H	E 4	170	-2	1
4S	S-2	200	-3	1
3S	S-2	200	-3	1
4H	E 4	620	-11	4
4H	E 5	650	-11	2

30

♠ KQ732  
♥ K6  
♦ J102  
♣ J76

♠ J6  
♥ J873  
♦ A74  
♣ A543

♠ A5  
♥ AQ1094  
♦ Q983  
♣ 82

♠ 10984  
♥ 52  
♦ K65  
♣ KQ109

	N	
W	—	E
	S	

Board (30) Av: NS=-150

Contract	N-S	E-W	IMP	Tie
4H	E-1	50	5	14
3H	E 3	140	0	11
2H	E 3	140	0	2
3H	E 4	170	-1	6
2H	E 4	170	-1	1
3H	E 5	200	-2	1
4Sx	N-2	300	-4	1
4H	W 4	420	-7	1
4H	E 4	420	-7	9

18th NEC CUP Qualifying Round 12 Thursday, April 18, 2013

**38**

♠ J10984  
♥ 87  
♦ K1084  
♣ 63

♠ A3  
♥ J9653  
♦ J  
♣ K9754

♠ K  
♥ A102  
♦ Q9732  
♣ AJ102

♠ Q7652  
♥ KQ4  
♦ A65  
♣ Q8

Board (38)

N-S	E-W	Contract	L	N-S	E-W	IMP
28	45	4S	S-3 DJ	150		
45	28	4S	S-2 DJ	100		

**39**

♠ 74  
♥ QJ32  
♦ 1064  
♣ A952

♠ AKJ8  
♥ K954  
♦ A3  
♣ 1043

♠ 932  
♥ A1076  
♦ KJ9  
♣ KJ6

♠ Q1065  
♥ 8  
♦ Q8752  
♣ Q87

Board (39)

N-S	E-W	Contract	L	N-S	E-W	IMP
28	45	4H	W-1 S7	100		
45	28	4H	W-2 S7	200		

**40**

♠ J109  
♥ Q5  
♦ Q95  
♣ A10653

♠ 3  
♥ K32  
♦ AK63  
♣ KQJ84

♠ AK52  
♥ AJ108  
♦ J107  
♣ 92

♠ Q8764  
♥ 9764  
♦ 842  
♣ 7

Board (40)

N-S	E-W	Contract	L	N-S	E-W	IMP
28	45	6NT	E-1 D8	50		
45	28	3NT	E 5 C7	460		

**41**

♠ A1064  
♥ K74  
♦ 97  
♣ KJ82

♠ J982  
♥ 103  
♦ KQJ102  
♣ Q7

♠ KQ75  
♥ Q9  
♦ A643  
♣ A103

♠ 3  
♥ AJ8652  
♦ 85  
♣ 9654

Board (41)

N-S	E-W	Contract	L	N-S	E-W	IMP
28	45	4S	E-3 HA	300		
45	28	4Sx	E-1 HA	200		

**42**

♠ AQ54  
♥ J  
♦ AKQ632  
♣ 76

♠ J83  
♥ 109875  
♦  
♣ Q10953

♠ 96  
♥ AKQ642  
♦ 5  
♣ A842

♠ K1072  
♥ 3  
♦ J109874  
♣ KJ

Board (42)

N-S	E-W	Contract	L	N-S	E-W	IMP
28	45	5Hx	E-1 S2	200		
45	28	5D	N 5 HA	600		

**43**

♠ 10652  
♥ J109  
♦ K654  
♣ K8

♠ Q843  
♥ 75  
♦ 10982  
♣ 1095

♠ K7  
♥ AQ832  
♦ J73  
♣ AQJ

♠ AJ9  
♥ K64  
♦ AQ  
♣ 76432

Board (43)

N-S	E-W	Contract	L	N-S	E-W	IMP
28	45	2H	E-1 C7	50		
45	28	2S	N 2 HA	110		

**44**

♠ 75  
♥ A4  
♦ Q873  
♣ KQ432

♠ 108  
♥ K7532  
♦ AJ105  
♣ AJ

♠ AKQJ6  
♥ QJ98  
♦ 4  
♣ 965

♠ 9432  
♥ 106  
♦ K962  
♣ 1087

Board (44)

N-S	E-W	Contract	L	N-S	E-W	IMP
28	45	6H	W-1 CK	50		
45	28	6H	W-1 CK	50		