

**17**

♠ A1082  
♥ K107643  
♦ Q8  
♣ 2

♠ J96  
♥ AJ2  
♦ K65  
♣ KQJ3

♠ Q73  
♥ Q8  
♦ J942  
♣ A1086

♠ K54  
♥ 95  
♦ A1073  
♣ 9754

**18**

♠ 932  
♥ AQJ82  
♦ 93  
♣ K107

♠ 8  
♥ K105  
♦ QJ87  
♣ AQ986

♠ AQJ65  
♥ 964  
♦ 542  
♣ J2

♠ K1074  
♥ 73  
♦ AK106  
♣ 543

**19**

♠ K10873  
♥ 942  
♦ 765  
♣ J5

♠ A54  
♥ QJ7  
♦ J1093  
♣ 962

♠ Q92  
♥ K53  
♦ A42  
♣ K1084

♠ J6  
♥ A1086  
♦ KQ8  
♣ AQ73

**20**

♠ 72  
♥ A82  
♦ AK8754  
♣ K10

♠ QJ1083  
♥ 104  
♦ 96  
♣ 7643

♠ AK54  
♥ KQ95  
♦ Q10  
♣ J52

♠ 96  
♥ J763  
♦ J32  
♣ AQ98

Board (17) Av: NS=+50

Contract	N-S	E-W	IMP	Tie
5D W-4	200		4	1
3NT E-4	200		4	1
4S W-3	150		3	1
3NT W-3	150		3	3
3D W-3	150		3	1
3C E-3	150		3	1
2S S 3	140		3	1
2H N 2	110		2	3
3NT W-2	100		2	9
3NT E-2	100		2	2
3C W-2	100		2	1
2S E-2	100		2	1
3NT W-1	50		0	9
3NT E-1	50		0	1
2NT W-1	50		0	3
2H N-1		50	-3	1
2NT W 2		120	-5	3
2NT E 2		120	-5	1
3NT W 3		400	-10	2
3NT E 3		400	-10	1

Board (18) Av: NS=+130

Contract	N-S	E-W	IMP	Tie
2Cx W-2	300		5	1
2S E-5	250		3	2
2S E-4	200		2	5
1NT S 4	180		2	2
1NT N 4	180		2	1
2H N 4	170		1	1
2S W-3	150		1	1
2S E-3	150		1	2
1S W-3	150		1	1
1NT W-3	150		1	1
1NT S 3	150		1	5
1NT N 3	150		1	1
2H N 3	140		0	2
1NT S 2	120		0	3
2S W-2	100		-1	1
2S E-2	100		-1	3
2C W-2	100		-1	2
1NT W-2	100		-1	4
1NT E-2	100		-1	1
1NT S 1	90		-1	2
2D W-1	50		-2	3
Passout			-4	1
2H N-1		100	-6	1

Board (19) Av: NS=+60

Contract	N-S	E-W	IMP	Tie
2S S 3	140		2	5
2S S 2	110		2	21
2S N 2	110		2	2
2NT E-1	100		1	1
1NT S 1	90		1	1
3S S-1		50	-3	1
2S S-1		50	-3	10
1NT S-1		50	-3	1
1NT N-1		50	-3	1
2S S-2		100	-4	1
1NT S-2		100	-4	1
3NT S-4		200	-6	1

Board (20) Av: NS=+170

Contract	N-S	E-W	IMP	Tie
3NT N 5	660		10	4
1NT N 5	210		1	2
3S W-2	200		1	6
3S E-2	200		1	2
4D N 5	150		-1	2
3D N 5	150		-1	10
2D N 5	150		-1	4
4D N 4	130		-1	2
3D N 4	130		-1	3
1NT N 2	120		-2	1
2S W-1	100		-2	1
2S E-1	100		-2	4
3NT S-1		100	-7	1
3NT N-1		100	-7	3
2S W 2		110	-7	1

# 21

♠ 1082  
 ♥  
 ♦ K854  
 ♣ AKQ872  
 ♠ J9  
 ♥ 8  
 ♦ Q10962  
 ♣ J9654  
 ♠ Q73  
 ♥ K76542  
 ♦ 73  
 ♣ 103  
 ♠ AK654  
 ♥ AQJ1093  
 ♦ AJ  
 ♣

Board (21) Av: NS=+580

Contract	N-S	E-W	IMP	Tie
6NT S 6	1440		13	2
6NT N 6	1440		13	3
6S S 6	1430		13	12
6S N 6	1430		13	1
2Hx E-5	1100		11	1
3NT S 6	690		3	2
3NT S 5	660		2	1
5S S 5	650		2	1
7S S-1	100	100	-12	2
7S N-1	100	100	-12	1
6S S-1	100	100	-12	10
6S N-1	100	100	-12	2
6NT S-1	100	100	-12	1
6H S-1	100	100	-12	1
7NT N-2	200	200	-13	2
7H S-2	200	200	-13	1
6H S-2	200	200	-13	2
7NT S-4	400	400	-14	1

# 22

♠ KQJ  
 ♥ 10  
 ♦ 75  
 ♣ AKJ7432  
 ♠ A3  
 ♥ 8654  
 ♦ Q6432  
 ♣ 109  
 ♠ 86542  
 ♥ K9  
 ♦ J1098  
 ♣ Q8  
 ♠ 1097  
 ♥ AQJ732  
 ♦ AK  
 ♣ 65

Board (22) Av: NS=+480

Contract	N-S	E-W	IMP	Tie
6NT S 6	990		11	1
6C N 7	940		10	1
6C N 6	920		10	2
3NT S 6	490		0	4
3NT N 6	490		0	7
4H S 6	480		0	2
3NT N 5	460		-1	2
5H S 5	450		-1	1
4H S 5	450		-1	7
5C N 7	440		-1	1
3NT N 4	430		-2	1
5C N 6	420		-2	4
3NT S 3	400		-2	6
3NT N 3	400		-2	6
6H S-1		50	-11	1

# 23

♠ 1052  
 ♥ K832  
 ♦ A  
 ♣ K10862  
 ♠ KJ976  
 ♥ J7  
 ♦ 109762  
 ♣ J  
 ♠ A843  
 ♥ AQ954  
 ♦ K8  
 ♣ 73  
 ♠ Q  
 ♥ 106  
 ♦ QJ543  
 ♣ AQ954

Board (23) Av: NS=0

Contract	N-S	E-W	IMP	Tie
5C N 5	600		12	3
4C N 5	150		4	1
3C N 5	150		4	2
4C S 4	130		4	2
4C N 4	130		4	1
3C S 4	130		4	6
3C N 4	130		4	4
2C N 4	130		4	1
3C S 3	110		3	1
3C N 3	110		3	1
4S E-1	100		3	1
2H E-1	100		3	1
5C S-1		100	-3	5
5C N-1		100	-3	3
3S W 3		140	-4	1
2S W 3		140	-4	1
3S W 4		170	-5	1
5Cx N-1		200	-5	1
5C S-2		200	-5	1
3S W 5		200	-5	3
2S W 5		200	-5	1
2D S-3		300	-7	2
6Cx S-2		500	-11	1
5Cx S-2		500	-11	1
4S E 4		620	-12	1

# 24

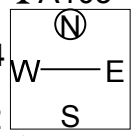
♠ K  
 ♥ A10982  
 ♦ K873  
 ♣ Q97  
 ♠ AQJ542  
 ♥ 4  
 ♦ 952  
 ♣ K104  
 ♠ 10963  
 ♥ Q53  
 ♦ 4  
 ♣ AJ853  
 ♠ 87  
 ♥ KJ76  
 ♦ AQJ106  
 ♣ 62

Board (24) Av: NS=-220

Contract	N-S	E-W	IMP	Tie
5Hx N 5	650		13	2
5Dx N 5	550		13	1
4H N 4	420		12	1
5D S 5	400		12	1
5D N 5	400		12	1
5Sx W-1	100		8	1
4Sx W-1	100		8	1
5S W-1	50		7	2
5S E-1	50		7	1
5H S-1		50	5	1
5H N-1		50	5	1
4H S-1		50	5	1
5Hx N-1		100	3	2
5H S-2		100	3	1
5H N-2		100	3	1
5D N-2		100	3	1
3S W 4		170	2	2
3S W 6		230	0	1
5Hx N-2		300	-2	1
5Dx S-2		300	-2	1
4S W 4		420	-5	5
4S E 4		420	-5	2
5S W 5		450	-6	1
4S W 5		450	-6	4
4S W 6		480	-6	1
4Sx W 4		590	-9	6
4Sx E 4		590	-9	1
5Sx W 5		650	-10	1
4Sx E 5		690	-10	1

# 25

♠ 986  
 ♥ 10982  
 ♦ 832  
 ♣ A103  
 ♠ 53  
 ♥ AKQ54  
 ♦ A  
 ♣ KQ982  
 ♠ KQ10  
 ♥ 73  
 ♦ KQ754  
 ♣ 754  
 ♠ AJ742  
 ♥ J6  
 ♦ J1096  
 ♣ J6

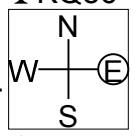


Board (25) Av:NS=-290

Contract	N-S	E-W	IMP	Tie
6NT E-3	300		11	1
6C W-3	300		11	1
5NT E-3	300		11	1
5D W-2	200		10	1
5C W-2	200		10	2
3NT E-2	200		10	3
5C W-1	100		9	1
4H W-1	100		9	3
4H E-1	100		9	3
4C E-1	100		9	1
3NT E-1	100		9	1
4C W 4		130	4	1
4S S-4		200	3	1
5C W 5		600	-7	1
3NT W 3		600	-7	1
3NT E 3		600	-7	14
4H W 4		620	-8	1
3NT W 4		630	-8	1
3NT E 4		630	-8	7
3NT E 5		660	-9	1

# 26

♠ Q63  
 ♥ J853  
 ♦ Q9  
 ♣ KQ86  
 ♠ 4  
 ♥ K72  
 ♦ AKJ874  
 ♣ 1097  
 ♠ A9752  
 ♥ A10  
 ♦ 103  
 ♣ J532  
 ♠ KJ108  
 ♥ Q964  
 ♦ 652  
 ♣ A4

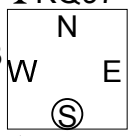


Board (26) Av:NS=-110

Contract	N-S	E-W	IMP	Tie
3NT E-3	300		9	1
2S E-2	200		7	1
2NT E-2	200		7	1
2S S-1		100	0	1
2H S-1		100	0	1
3D W 3		110	0	4
2D W 3		110	0	10
2NT W 2		120	0	1
2NT E 2		120	0	3
3D W 4		130	-1	3
3D E 4		130	-1	1
2D W 4		130	-1	13
2D E 4		130	-1	1
2NT E 3		150	-1	2
2H N-2		200	-3	2
3H N-3		300	-5	1

# 27

♠ 85  
 ♥ 10952  
 ♦ 985  
 ♣ KQ97  
 ♠ AJ92  
 ♥ K743  
 ♦ 1074  
 ♣ 106  
 ♠ 104  
 ♥ AQJ6  
 ♦ K6  
 ♣ AJ854  
 ♠ KQ763  
 ♥ 8  
 ♦ AQJ32  
 ♣ 32

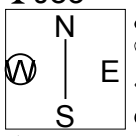


Board (27) Av:NS=0

Contract	N-S	E-W	IMP	Tie
2Sx S 2	470		10	1
2Dx N 2	180		5	1
4H W-3	150		4	2
2S S 2	110		3	3
2S N 2	110		3	1
4H W-2	100		3	3
4H E-2	100		3	2
3H W-2	100		3	1
2D S 2	90		3	1
4H W-1	50		2	1
4H E-1	50		2	1
3H W-1	50		2	2
3H E-1	50		2	4
2H W-1	50		2	1
3D S-1		50	-2	1
2S S-1		50	-2	2
4D S-2		100	-3	1
3D S-2		100	-3	1
2Sx S-1		100	-3	2
2S S-2		100	-3	6
2H W 2		110	-3	4
3H W 3		140	-4	3
2H W 3		140	-4	1
2H E 3		140	-4	1

# 28

♠ K87  
 ♥ J65  
 ♦ Q754  
 ♣ J83  
 ♠ Q1065  
 ♥ Q98  
 ♦ A2  
 ♣ AK107  
 ♠ J  
 ♥ A107432  
 ♦ J96  
 ♣ 964  
 ♠ A9432  
 ♥ K  
 ♦ K1083  
 ♣ Q52



Board (28) Av:NS=-180

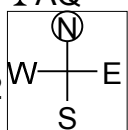
Contract	N-S	E-W	IMP	Tie
4H W-1	50		6	5
4H E-1	50		6	1
2H W 2		110	2	3
3H W 3		140	1	3
3H E 3		140	1	3
2H W 3		140	1	8
2H E 3		140	1	1
3H W 4		170	0	3
3H E 4		170	0	1
2H W 4		170	0	5
1NT E 4		180	0	1
3H W 5		200	-1	1
2Sx N-1		200	-1	1
4H W 4		420	-6	9
4H E 4		420	-6	1

29

♠AJ3  
♥10986  
♦J1065  
♣AQ

♠1072  
♥J3  
♦A9742  
♣932

♠KQ985  
♥K42  
♦K  
♣K765



♠64  
♥AQ75  
♦Q83  
♣J1084

Board (29) Av: NS=0

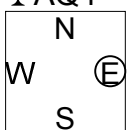
Contract	N-S	E-W	IMP	Tie
4H S 4	620		12	1
3S E-2	200		5	3
2Dx N 2	180		5	1
3H N 3	140		4	4
2H S 3	140		4	1
2H N 2	110		3	2
3S E-1	100		3	3
2S E-1	100		3	8
4H N-1	100	100	-3	2
3H S-1	100	100	-3	1
3H N-1	100	100	-3	10
2H S-1	100	100	-3	1
2S E 2	110		-3	3
3S E 3	140		-4	1
2S E 3	140		-4	1
4H N-2	200		-5	2
3H N-2	200		-5	1
4H N-3	300		-7	1

30

♠Q6  
♥AK1075  
♦743  
♣AQ4

♠K3  
♥J32  
♦AJ1062  
♣1087

♠A7542  
♥Q8  
♦KQ95  
♣32



♠J1098  
♥964  
♦8  
♣KJ965

Board (30) Av: NS=+110

Contract	N-S	E-W	IMP	Tie
5Dx W-2	300		5	1
2S E-5	250		4	1
3H N 5	200		3	1
3H S 4	170		2	1
3H N 4	170		2	7
2H N 4	170		2	3
2S E-3	150		1	1
1NT N 3	150		1	1
3H N 3	140		1	7
2H N 3	140		1	7
3S E-2	100		0	2
2S E-2	100		0	1
1NT N 1	90		-1	1
3D W-1	50		-2	1
2S E-1	50		-2	5
4H N-1		50	-4	1
1NT N-1		50	-4	1
3D E 3		110	-6	3
3D W 4		130	-6	1

18th NEC CUP Qualifying Round 2 Tuesday, April 16, 2013

**38**

♠ AQJ  
♥ Q  
♦ J93  
♣ KJ9872

♠ K109  
♥ AKJ5  
♦ AQ84  
♣ 53

♠ 8764  
♥ 1094  
♦ 1075  
♣ AQ6

W — E

♠ 532  
♥ 87632  
♦ K62  
♣ 104

Board (38)

N-S	E-W	Contract	L	N-S	E-W	IMP
31	41	3C	N-1 S6		50	
41	31	3C	N-2 H9		100	

**39**

♠ 1095  
♥ 653  
♦ AQ94  
♣ AKQ

♠ KQJ7  
♥ AK82  
♦ 1072  
♣ J5

♠ A2  
♥ J97  
♦ K53  
♣ 98732

W — E

♠ 8643  
♥ Q104  
♦ J86  
♣ 1064

Board (39)

N-S	E-W	Contract	L	N-S	E-W	IMP
31	41	1S	S-2 HK		200	
41	31	1NT	N-2 D3		200	

**40**

♠ A  
♥ 762  
♦ QJ75  
♣ AJ873

♠ K1042  
♥ KQ  
♦ 108432  
♣ K9

♠ QJ9765  
♥ J4  
♦ AK6  
♣ 106

W — E

♠ 83  
♥ A109853  
♦ 9  
♣ Q542

Board (40)

N-S	E-W	Contract	L	N-S	E-W	IMP
31	41	5S	E-3 D6		150	
41	31	3S	E-2 C4		100	

**41**

♠ 652  
♥ Q108  
♦ J985  
♣ Q93

♠ J987  
♥ AKJ3  
♦ 2  
♣ AK102

♠ 43  
♥ 9764  
♦ A76  
♣ J765

W — E

♠ AKQ10  
♥ 52  
♦ KQ1043  
♣ 84

Board (41)

N-S	E-W	Contract	L	N-S	E-W	IMP
31	41	1NT	S 1 S7		90	
41	31	4H	E-2 SA		200	

**42**

♠ 432  
♥ 107652  
♦ K762  
♣ 6

♠ J1096  
♥ AJ3  
♦ Q84  
♣ 1074

♠ AKQ5  
♥ 8  
♦ 53  
♣ KJ9853

W — E

♠ 87  
♥ KQ94  
♦ AJ109  
♣ AQ2

Board (42)

N-S	E-W	Contract	L	N-S	E-W	IMP
31	41	3H	S-1 SJ		100	
41	31	2D	N 3 SK		110	

**43**

♠ J1082  
♥ K632  
♦ AJ8  
♣ A3

♠ AQ874  
♥ Q1043  
♣ K764

♠ AKQ76  
♥ 109  
♦ 7  
♣ QJ952

W — E

♠ 9543  
♥ J5  
♦ K9652  
♣ 108

Board (43)

N-S	E-W	Contract	L	N-S	E-W	IMP
31	41	5C	E-1 CA		50	
41	31	5C	W 5 DA		400	

**44**

♠ J7  
♥ Q105  
♦ Q76  
♣ AJ974

♠ KQ654  
♥ A73  
♦ 9532  
♣ Q

♠ 932  
♥ 862  
♦ KJ108  
♣ K83

W — E

♠ A108  
♥ KJ94  
♦ A4  
♣ 10652

Board (44)

N-S	E-W	Contract	L	N-S	E-W	IMP
31	41	2S	W-1 D6		50	
41	31	3C	S 3 SQ		110	