

18th NEC CUP Qualifying Round 5 Wednesday, April 17, 2013

1

♠ 10653
♥ 10432
♦ 102
♣ K43

♠ 84
♥ A976
♦ A853
♣ AJ10

♠ KJ9
♥ KQ5
♦ 764
♣ 9862

♠ AQ72
♥ J8
♦ KQJ9
♣ Q75

Board (1) Av: NS=+40

Contract	N-S	E-W	IMP	Tie
2S S 3	140		3	1
1NT S 2	120		2	2
2S S 2	110		2	4
2S N 2	110		2	1
1S S 2	110		2	1
2NT E-2	100		2	1
2C E-2	100		2	1
1NT S 1	90		2	16
1NT N 1	90		2	1
1C S 1	70		1	1
3S S-1		50	-3	1
2S N-1		50	-3	1
1NT S-1		50	-3	10
1D S-1		50	-3	3
1NT S-2		100	-4	2

2

♠ 10653
♥ K7
♦ K10875
♣ K7

♠ 10985
♥ QJ93
♦ AJ1094
♣ AJ1094

♠ A984
♥ A432
♦ 4
♣ Q853

♠ KQJ72
♥ QJ6
♦ A62
♣ 62

Board (2) Av: NS=+200

Contract	N-S	E-W	IMP	Tie
3Sx S 3	730		11	1
4S S 4	620		9	5
5Hx E-3	500		7	1
5Hx E-2	300		3	3
5Cx W-2	300		3	5
5Cx E-2	300		3	5
3S S 4	170		-1	5
3S S 3	140		-2	5
3S N 3	140		-2	2
4H E-2	100		-3	1
4H E-1	50		-4	4
4S S-1		100	-7	6
3S S-1		100	-7	2
3C E 3		110	-7	1

3

♠ AK4
♥ AQ9862
♦ A64
♣ 10

♠ 985
♥ 105
♦ Q87
♣ KQ963

♠ QJ32
♥ K74
♦ K53
♣ 742

♠ 1076
♥ J3
♦ J1092
♣ AJ85

Board (3) Av: NS=+260

Contract	N-S	E-W	IMP	Tie
4H N 5	450		5	2
4H N 4	420		4	18
3NT S 3	400		4	2
3H N 5	200		-2	2
3H N 4	170		-3	9
2H N 4	170		-3	3
3H N 3	140		-3	4
4H N-1		50	-7	4
4H N-2		100	-8	1
3C N-2		100	-8	1

4

♠ AJ10975
♥ KQ3
♦ J
♣ KQJ

♠ Q3
♥ 10652
♦ 74
♣ A9843

♠ K842
♥ AJ74
♦ 10862
♣ 7

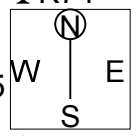
♠ 6
♥ 98
♦ AKQ953
♣ 10652

Board (4) Av: NS=+80

Contract	N-S	E-W	IMP	Tie
3NT S 5	660		11	3
3NT S 4	630		11	2
4S N 4	620		11	4
3NT N 3	600		11	4
3C N 3	110		1	1
4S S-1		100	-5	1
4S N-1		100	-5	17
3NT S-1		100	-5	3
3NT N-1		100	-5	1
2C N-1		100	-5	1
6D S-2		200	-7	1
4S N-2		200	-7	2
3NT N-2		200	-7	4
5C N-3		300	-9	1
3NT S-3		300	-9	1

5

♠ K96
 ♥ KJ954
 ♦ 42
 ♣ K74
 ♠ 1082
 ♥ Q7
 ♦ AK1075
 ♣ 1062
 ♠ Q7543
 ♥ 10862
 ♦ 9
 ♣ AJ8
 ♠ AJ
 ♥ A3
 ♦ QJ863
 ♣ Q953

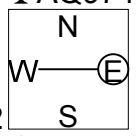


Board (5) Av: NS=+40

Contract	N-S	E-W	IMP	Tie
3NT S 3	600		11	6
3NT N 3	600		11	2
2NT S 3	150		3	1
3H N 3	140		3	1
2H N 3	140		3	1
3C S 3	110		2	1
2H N 2	110		2	1
2S W-1	50		0	1
2S E-1	50		0	5
4H N-1	100		-4	1
3NT S-1	100		-4	5
3NT N-1	100		-4	10
2NT N-1	100		-4	1
2D S-1	100		-4	1
2S E 2	110		-4	2
3NTxN-1	200		-6	2
3NT N-2	200		-6	2
3H N-2	200		-6	1
3C N-2	200		-6	1
2D S-2	200		-6	1

6

♠ J10
 ♥ A
 ♦ 109542
 ♣ AQ974
 ♠ 8542
 ♥ KQ107
 ♦ 108632
 ♣ 108632
 ♠ AK973
 ♥ J8652
 ♦ AQ
 ♣ J
 ♠ Q6
 ♥ 943
 ♦ KJ8763
 ♣ K5

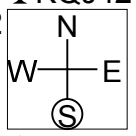


Board (6) Av: NS=-500

Contract	N-S	E-W	IMP	Tie
6Dx S 6	1090		17	1
5Dx S 5	550		14	1
5Dx S-1		100	9	4
5Dx N-1		100	9	1
5D S-2		100	9	1
5D N-2		100	9	1
6Dx S-2		300	5	4
5Dx S-2		300	5	2
6Dx S-3		500	0	1
5S E 5		650	-4	7
5H E 5		650	-4	1
4S E 5		650	-4	17
5Sx E 5		850	-8	5

7

♠ A95
 ♥ 3
 ♦ J854
 ♣ KQJ42
 ♠ 10642
 ♥ 9872
 ♦ AK2
 ♣ 103
 ♠ KJ87
 ♥ QJ1065
 ♦ 9
 ♣ A76
 ♠ Q3
 ♥ AK4
 ♦ Q10763
 ♣ 985

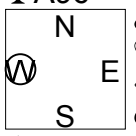


Board (7) Av: NS=-10

Contract	N-S	E-W	IMP	Tie
4Hx W-3	800		13	1
4Hx E-3	800		13	1
4Dx S 4	710		12	2
4Hx E-2	500		11	1
3Hx E-2	500		11	1
3H E-2	200		5	1
3C N 4	130		4	1
2NT S 2	120		4	1
3D S 3	110		3	2
3C N 3	110		3	1
3H E-1	100		3	5
Passout			0	1
4D S-1	100		-3	1
4D N-1	100		-3	1
3NT S-1	100		-3	2
3NT N-1	100		-3	1
2NT S-1	100		-3	4
2NT N-1	100		-3	1
2H E 2	110		-3	1
3H E 3	140		-4	3
2H E 3	140		-4	2
5D S-2	200		-5	4
4Dx N-1	200		-5	1
3NTxS-1	200		-5	1
3NT S-2	200		-5	1
3NT N-2	200		-5	1
5Dx S-2	500		-10	1
5Cx N-2	500		-10	1
3Hx E 3	730		-12	2

8

♠ 9732
 ♥ 107
 ♦ Q643
 ♣ A96
 ♠ AQJ6
 ♥ 5432
 ♦ 92
 ♣ Q52
 ♠ 1085
 ♥ Q6
 ♦ AKJ7
 ♣ KJ73
 ♠ K4
 ♥ AKJ98
 ♦ 1085
 ♣ 1084



Board (8) Av: NS=-180

Contract	N-S	E-W	IMP	Tie
4H E-2	100		7	1
3H E-2	100		7	1
3H E-1	50		6	4
2S N-1		50	4	1
2S N-2		100	2	1
2H E 2		110	2	1
3H E 3		140	1	4
2H E 3		140	1	4
3S N-3		150	1	2
2S N-3		150	1	1
3H E 4		170	0	14
2H E 4		170	0	4
2S N-4		200	-1	2
4H E 4		420	-6	2
4Hx E 4		590	-9	1
2Hx E 4		670	-10	1
3Sx N-4		800	-12	1
2Sx N-4		800	-12	1

9

♠ 98
♥ Q752
♦ 1087
♣ Q765

♠ AQJ10632
♥ J
♦ 3
♣ 9432

♠ 4
♥ AK984
♦ AK654
♣ AJ

♠ K75
♥ 1063
♦ QJ92
♣ K108

(N)

W — E
S

Board (9) Av: NS=-520

Contract	N-S	E-W	IMP	Tie
5C	E-2	200	12	1
6S	W-1	100	12	7
6S	E-1	100	12	1
4H	E-1	100	12	1
3NT	E 3	600	-2	1
5S	W 5	650	-4	4
5S	E 5	650	-4	1
4S	W 5	650	-4	23
4S	E 5	650	-4	2
5S	W 6	680	-4	1
4S	E 6	680	-4	1
3NT	E 6	690	-5	1
6S	W 6	1430	-14	2

10

♠ A9542
♥ 6
♦ AQ86
♣ 986

♠ Q
♥ KQ102
♦ J953
♣ AKQ2

♠ K1073
♥ AJ9873
♦ 10
♣ 43

♠ J86
♥ 54
♦ K742
♣ J1075

(N)

W — E
S

Board (10) Av: NS=-640

Contract	N-S	E-W	IMP	Tie
6H	W-1	100	12	1
6H	E-1	100	12	1
5H	E 5	650	0	4
4H	W 5	650	0	3
4H	E 5	650	0	21
5H	E 6	680	-1	1
4H	W 6	680	-1	10
4H	E 6	680	-1	4
6H	W 6	1430	-13	1

11

♠ A86
♥ AJ65
♦ 62
♣ AQ65

♠ 32
♥ Q1083
♦ AQ94
♣ 1042

♠ K94
♥ 942
♦ K107
♣ KJ83

♠ QJ1075
♥ K7
♦ J853
♣ 97

(N)

W — E
S

Board (11) Av: NS=+120

Contract	N-S	E-W	IMP	Tie
4S	S 4	420	7	3
3S	N 4	170	2	2
2S	N 4	170	2	12
3S	N 3	140	1	2
2S	S 3	140	1	3
2S	N 3	140	1	10
2S	N 2	110	0	6
4S	S-1	50	-5	1
4S	N-1	50	-5	1
3S	S-1	50	-5	1
3S	N-1	50	-5	1
4S	S-2	100	-6	1
4S	N-2	100	-6	2
4S	N-3	150	-7	1

12

♠ KQJ98
♥ 10
♦ 109753
♣ AK

♠ 632
♥ Q52
♦ KQJ42
♣ J4

♠ 104
♥ AJ974
♦ 8
♣ Q9762

♠ A75
♥ K863
♦ A6
♣ 10853

(N)

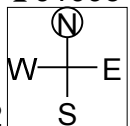
W — E
S

Board (12) Av: NS=+650

Contract	N-S	E-W	IMP	Tie
5Hx	W-6	1400	13	1
5Hx	W-5	1100	10	3
4S	S 5	650	0	1
4S	N 5	650	0	24
4S	N 4	620	-1	14
3Hx	W-3	500	-4	1
4S	N-1	100	-13	1
6S	N-3	300	-14	1

13

♠ A63
 ♥ 83
 ♦ KQ53
 ♣ J1093
 ♠ K82
 ♥ Q5
 ♦ A109
 ♣ KQ872
 ♠ J54
 ♥ AJ72
 ♦ J872
 ♣ A5
 ♠ Q1097
 ♥ K10964
 ♦ 64
 ♣ 64

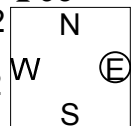


Board (13) Av: NS=+10

Contract	N-S	E-W	IMP	Tie
3NT W-4	400		9	1
3NT E-3	300		7	2
3NTxW-1	200		5	1
3NTxE-1	200		5	1
3NT W-2	200		5	9
3NT E-2	200		5	2
3D E-2	200		5	1
3NT W-1	100		3	12
3NT E-1	100		3	3
2H N-1	100	100	-3	1
1NT N-1	100	100	-3	1
1NT W 2	120	120	-4	2
1NT E 2	120	120	-4	2
2S N-2	200	200	-5	1
3NT W 3	600	600	-12	4
3NT E 3	600	600	-12	3

14

♠ Q10874
 ♥ 102
 ♦ AK65
 ♣ 93
 ♠ K962
 ♥ Q86
 ♦ 1082
 ♣ K87
 ♠ J
 ♥ AJ974
 ♦ J43
 ♣ AJ52
 ♠ A53
 ♥ K53
 ♦ Q97
 ♣ Q1064



Board (14) Av: NS=+40

Contract	N-S	E-W	IMP	Tie
3S N 3	140		3	17
2S S 3	140		3	1
2S N 3	140		3	2
3H E-2	100		2	2
3H E-1	50		0	1
2H E-1	50		0	6
Passout			-1	2
4S N-1		50	-3	2
2S N-1		50	-3	1
2H W 2		110	-4	1
2H E 2		110	-4	7
3H E 3		140	-5	2
2H E 3		140	-5	2

18th NEC CUP Qualifying Round 5 Wednesday, April 17, 2013

36

♠ 86
♥ J
♦ KJ973
♣ QJ976

♠ K432 ♠ J109
♥ 9543 ♥ Q862
♦ 1064 ♦ A852
♣ 85 ♣ A3

♠ AQ75
♥ AK107
♦ Q
♣ K1042

Board (36)

N-S	E-W	Contract	L	N-S	E-W	IMP
31	41	3NT S	3 D6	600		
41	31	3NT N	3 SJ	600		

37

♠ QJ7
♥ J852
♦ J85
♣ 842

♠ 53 ♠ AK1042
♥ K93 ♥ A4
♦ Q10763 ♦ A42
♣ A73 ♣ J65

♠ 986
♥ Q1076
♦ K9
♣ KQ109

Board (37)

N-S	E-W	Contract	L	N-S	E-W	IMP
31	41	3NT W	3 H5	400		
41	31	3NT W	4 D5	430		

38

♠ AQ109
♥ J8
♦ 975
♣ AJ65

♠ J2 ♠ K7643
♥ A975 ♥ Q4
♦ Q1086 ♦ AK32
♣ Q87 ♣ K4

♠ 85
♥ K10632
♦ J4
♣ 10932

Board (38)

N-S	E-W	Contract	L	N-S	E-W	IMP
31	41	3NT W-1	HJ	100		
41	31	2S E	2 S5	110		

39

♠ A86
♥ K432
♦ A76
♣ Q65

♠ QJ10952 ♠ K74
♥ 87 ♥ A10
♦ 94 ♦ KJ103
♣ A98 ♣ 10432

♠ 3
♥ QJ965
♦ Q852
♣ KJ7

Board (39)

N-S	E-W	Contract	L	N-S	E-W	IMP
31	41	3S W-2	C5	200		
41	31	2S W	3 D6	140		

40

♠ AJ65
♥ A5
♦ Q742
♣ Q92

♠ Q8742 ♠ K
♥ KQ1076 ♥ 932
♦ 8 ♦ AJ653
♣ J4 ♣ AK65

♠ 1093
♥ J84
♦ K109
♣ 10873

Board (40)

N-S	E-W	Contract	L	N-S	E-W	IMP
31	41	4H W-1	HA	50		
41	31	3NT E-1	C3	50		

41

♠ Q
♥ KQ6432
♦ Q5
♣ KQ54

♠ AK42 ♠ 9873
♥ A97 ♥ 1085
♦ A43 ♦ 86
♣ A98 ♣ J762

♠ J1065
♥ J
♦ KJ10972
♣ 103

Board (41)

N-S	E-W	Contract	L	N-S	E-W	IMP
31	41	3S E-3	DT	300		
41	31	2H N	2 D8	110		

42

♠ Q97
♥ 9853
♦ 1094
♣ J87

♠ A4 ♠ 106
♥ K106 ♥ QJ72
♦ AQ8765 ♦ K32
♣ Q5 ♣ K1094

♠ KJ8532
♥ A4
♦ J
♣ A632

Board (42)

N-S	E-W	Contract	L	N-S	E-W	IMP
31	41	3D W	5 S7	150		
41	31	3D W	4 S7	130		