

17 ♠K432
♥KQJ103
♦A94
♣3

♠J1085 (N)
♥962 W E
♦53 S
♣QJ92

♠96
♥A875
♦KQ1062
♣A6

♠AQ7
♥4
♦J87
♣K108754

18 ♠AQ94
♥J1032
♦83
♣J106

♠753 (N)
♥Q76 W E
♦A4 S
♣Q9832

♠KJ86
♥98
♦QJ106
♣AK4

♠102
♥AK54
♦K9752
♣75

19 ♠AK74
♥8532
♦K72
♣J5

♠J1032 (N)
♥ A9643 W E
♦10643 S
♣10643

♠6
♥KQJ1097
♦QJ
♣A972

♠Q985
♥A64
♦1085
♣KQ8

20 ♠J765
♥
♦QJ762
♣K972

♠42 (N)
♥AKJ2 W E
♦1054 S
♣AJ105

♠Q983
♥Q874
♦A8
♣864

♠AK10
♥109653
♦K93
♣Q3

Board (17) Av: NS=+100

Contract	N-S	E-W	IMP	Tie
3NT N 4	430		8	4
3NT N 3	400		7	1
3NT E-5	250		4	1
3D E-5	250		4	1
3D E-4	200		3	2
2D E-4	200		3	2
3H N 4	170		2	3
3D E-3	150		2	2
2D E-3	150		2	2
1NT S 3	150		2	1
3S N 3	140		1	1
3H N 3	140		1	2
2S N 3	140		1	5
3C S 3	110		0	1
2S S 2	110		0	1
2S N 2	110		0	1
2D E-2	100		0	1
4S S-1		50	-4	2
4S N-1		50	-4	2
3S S-1		50	-4	1
3H N-1		50	-4	2
3C S-1		50	-4	2
3C N-1		50	-4	1
4Sx N-1		100	-5	1
4S S-2		100	-5	1
4S N-2		100	-5	1
5Dx N-4		800	-14	1
6Cx S-6		1400	-17	1

Board (18) Av: NS=-150

Contract	N-S	E-W	IMP	Tie
2H S 2	110		6	1
1NT W 1		90	2	6
2H S-1		100	2	1
2H N-1		100	2	1
2NT E 2		120	1	4
1NT W 2		120	1	13
1NT E 2		120	1	5
2NT E 3		150	0	1
1NT W 3		150	0	7
1NT E 3		150	0	2
3H S-3		300	-4	1
3NT E 3		400	-6	2
4H N-5		500	-8	1
3NTxE 3		550	-9	1

Board (19) Av: NS=-90

Contract	N-S	E-W	IMP	Tie
5Hx E-3	800		13	1
3Hx E-1	200		7	1
1NT S 2	120		5	1
2S N 2	110		5	4
2H W-1	100		5	1
3S S-1		50	1	1
3S N-1		50	1	8
2S S-1		50	1	1
2S N-1		50	1	2
2NT S-1		50	1	1
3S N-2		100	0	1
3D S-2		100	0	1
2H E 2		110	-1	7
3S N-3		150	-2	6
2S N-3		150	-2	1
2NT S-3		150	-2	1
2H N-3		150	-2	1
4S N-4		200	-3	1
3S S-4		200	-3	1
3S N-4		200	-3	1
2Hx N-2		300	-5	1
5C N-7		350	-6	1
2Hx E 2		670	-11	2

Board (20) Av: NS=+30

Contract	N-S	E-W	IMP	Tie
3H W-2	200		5	2
2H E-2	200		5	1
3D N 3	110		2	2
2S S 2	110		2	1
3H E-1	100		2	2
2H E-1	100		2	18
1NT W-1	100		2	3
2D N 2	90		2	1
1H S-1		100	-4	1
2H W 2		110	-4	1
2H E 2		110	-4	12
1NT E 2		120	-4	1
2H E 3		140	-5	1

21

♠ Q1097
♥ 965
♦ QJ
♣ 10874

♠ J8543
♥ Q107
♦ A82
♣ A3

♠ A
♥ J32
♦ K97543
♣ K52

♠ K62
♥ AK84
♦ 106
♣ QJ96

22

♠ KJ10
♥ A953
♦ AJ4
♣ J92

♠ A86532
♥ K106
♦ Q
♣ AKQ

♠ 9
♥ Q2
♦ K986532
♣ 1073

♠ Q74
♥ J874
♦ 107
♣ 8654

23

♠ J109832
♥ 106
♦ 72
♣ A106

♠ AQ764
♥ AK7
♦ K63
♣ 85

♠ Q9853
♥ AQJ1095
♣ 73

♠ K5
♥ J42
♦ 84
♣ KQJ942

24

♠ AK4
♥ A65
♦ J52
♣ 7643

♠ Q72
♥ QJ4
♦ AK94
♣ J92

♠ J8653
♥ K10732
♦ Q
♣ KQ

♠ 109
♥ 98
♦ 108763
♣ A1085

Board (21) Av: NS=-190

Contract	N-S	E-W	IMP	Tie
3C W-2	100		7	1
1S N 1	80		7	1
1S W 1		80	3	1
2S W 2		110	2	1
1NT E 2		120	2	1
4D E 5		150	1	1
3D E 5		150	1	21
2NT W 3		150	1	3
2D E 5		150	1	6
2NT W 4		180	0	1
3NT W 3		400	-5	8
3NT E 4		430	-6	1

Board (22) Av: NS=-60

Contract	N-S	E-W	IMP	Tie
4Sx W-1	200		6	1
3NT W-2	200		6	1
5D E-1	100		4	2
4S W-1	100		4	2
3S W-1	100		4	3
3NT W-1	100		4	4
3NT E-1	100		4	2
3C W-1	100		4	1
2S W 2		110	-2	1
2S E 2		110	-2	1
4D W 4		130	-2	1
3D E 4		130	-2	5
2D W 4		130	-2	1
3S W 3		140	-2	6
2S W 3		140	-2	9
1S W 3		140	-2	3
1S W 4		170	-3	1
3H N-5		250	-5	1
3NT W 3		600	-11	1

Board (23) Av: NS=-530

Contract	N-S	E-W	IMP	Tie
3NT E-2	200		12	2
6H W-1	100		12	1
4D E 5		150	9	1
3D E 5		150	9	1
2D E 5		150	9	1
3D E 6		170	8	1
3H E 5		200	8	1
2Cx S-1		200	8	2
2H W 6		230	7	1
5D W 5		600	-2	4
5D E 5		600	-2	10
5D E 6		620	-3	3
5D W 7		640	-3	1
5D E 7		640	-3	1
4H W 5		650	-3	1
4H E 5		650	-3	9
4H E 6		680	-4	1
4H W 7		710	-5	3
6H W 7		1460	-14	2

Board (24) Av: NS=0

Contract	N-S	E-W	IMP	Tie
4Sx E-2	300		7	1
4S E-2	100		3	10
4H E-2	100		3	5
3NT W-2	100		3	1
4S E-1	50		2	7
4H W-1	50		2	1
4H E-1	50		2	2
3S E-1	50		2	3
2Cx N-1		100	-3	1
2S W 2		110	-3	1
2S E 2		110	-3	3
2H E 2		110	-3	1
3S E 3		140	-4	2
2S E 3		140	-4	2
2H E 3		140	-4	1
1S E 3		140	-4	1
1NT W 3		150	-4	1
2S E 4		170	-5	1
3NT W 3		400	-9	2

25

♠ QJ3
♥ 1083
♦ Q8752
♣ Q10

♠ K862
♥ QJ95
♦ 109
♣ 853

♠ 974
♥ AK4
♦ KJ63
♣ K72

♠ A105
♥ 762
♦ A4
♣ AJ964

Diagram: A 4x4 grid with N, S, E, W. A circle with 'N' is above the grid, and a circle with 'S' is below. A circle with 'W' is to the left, and a circle with 'E' is to the right.

26

♠ 106543
♥ 10
♦ AJ106
♣ Q76

♠ K97
♥ A8543
♦ 32
♣ A92

♠ J82
♥ KQJ9
♦ 987
♣ K104

♠ AQ
♥ 762
♦ KQ54
♣ J853

Diagram: A 4x4 grid with N, S, E, W. A circle with 'N' is above the grid, and a circle with 'S' is below. A circle with 'W' is to the left, and a circle with 'E' is to the right.

27

♠ AKJ74
♥ A74
♦ K95
♣ AJ

♠ 52
♥ 9865
♦ 74
♣ K10742

♠ Q3
♥ K1032
♦ QJ1063
♣ Q8

♠ 10986
♥ QJ
♦ A82
♣ 9653

Diagram: A 4x4 grid with N, S, E, W. A circle with 'N' is above the grid, and a circle with 'S' is below. A circle with 'W' is to the left, and a circle with 'E' is to the right.

28

♠ AKJ5
♥ AJ964
♦ 2
♣ 1082

♠ 10
♥ KQ103
♦ K74
♣ K9643

♠ Q86432
♥ 2
♦ QJ63
♣ AJ

♠ 97
♥ 875
♦ A10985
♣ Q75

Diagram: A 4x4 grid with N, S, E, W. A circle with 'N' is above the grid, and a circle with 'S' is below. A circle with 'W' is to the left, and a circle with 'E' is to the right.

Board (25) Av: NS=+50

Contract	N-S	E-W	IMP	Tie
3NT E-2	200		4	1
2S E-2	200		4	1
2NT E-2	200		4	4
2H W-2	200		4	1
2H E-2	200		4	2
1NT N 2	120		2	2
2NT E-1	100		2	2
2H W-1	100		2	2
2H E-1	100		2	2
2D E-1	100		2	1
1S E-1	100		2	1
1NT E-1	100		2	5
2D S 2	90		1	1
2C S 2	90		1	1
1NT N 1	90		1	3
2S N-1		50	-3	1
2C S-1		50	-3	6
1NT W 1		90	-4	1
1NT E 1		90	-4	5
2C S-2		100	-4	1
2H W 2		110	-4	2
2H E 2		110	-4	1

Board (26) Av: NS=-130

Contract	N-S	E-W	IMP	Tie
4Hx W-1	200		8	1
2D S 3	110		6	1
3H W-1	100		6	1
2D S 2	90		6	2
3D S-1		100	1	1
3D N-1		100	1	1
2S N-1		100	1	1
2H E 2		110	1	1
2NT E 2		120	0	1
3H W 3		140	0	15
3H E 3		140	0	1
2H W 3		140	0	5
3H W 4		170	-1	4
3H E 4		170	-1	1
2H E 4		170	-1	1
3S N-2		200	-2	8
2S N-2		200	-2	1

Board (27) Av: NS=+440

Contract	N-S	E-W	IMP	Tie
5S N 5	450		0	1
4S S 5	450		0	1
4S N 5	450		0	31
3NT N 4	430		0	6
4S N 4	420		-1	6
3NT S 3	400		-1	1

Board (28) Av: NS=0

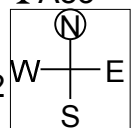
Contract	N-S	E-W	IMP	Tie
3NTxW-3	500		11	1
3Sx E-2	300		7	1
3NT W-3	150		4	2
2H N 2	110		3	4
3S E-2	100		3	6
3D E-2	100		3	1
2NT W-2	100		3	2
3C W-1	50		2	1
2S E-1	50		2	11
2D E-1	50		2	1
1S E 1		80	-2	1
4H N-1		100	-3	1
3H N-1		100	-3	1
2H S-1		100	-3	3
2H N-1		100	-3	2
2S E 2		110	-3	3
3H N-2		200	-5	2
2H S-2		200	-5	1
4Hx N-3		800	-13	1
3Hx N-3		800	-13	1

18th NEC CUP Qualifying Round 6 Wednesday, April 17, 2013

29

♠K1043
♥95
♦9863
♣A83

♠5
♥AK
♦Q10752
♣QJ975



♠Q986
♥7642
♦4
♣K1062

♠AJ72
♥QJ1083
♦AKJ
♣4

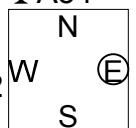
Board (29) Av: NS=+120

Contract	N-S	E-W	IMP	Tie
4S S 4	620		11	4
4S N 4	620		11	9
5Cx E-2	500		9	1
5Cx E-1	200		2	2
3S N 4	170		2	2
3S N 3	140		1	1
3H S 3	140		1	1
5C E-1	100		-1	1
5S N-1	100	100	-6	1
4S S-1	100	100	-6	4
4S N-1	100	100	-6	5
3H S-1	100	100	-6	2
3C E 3	110	110	-6	1
4C E 4	130	130	-6	1
3C E 4	130	130	-6	4
4S S-2	200	200	-8	1
4S N-2	200	200	-8	1
3NT N-2	200	200	-8	1
3NT N-3	300	300	-9	1
4S S-4	400	400	-11	1
3Cx E 3	670	670	-13	1
3Cx E 4	870	870	-14	1

30

♠9875
♥1083
♦KJ3
♣A54

♠K
♥97
♦Q10872
♣J8632



♠Q106
♥AK654
♦96
♣KQ7

♠AJ432
♥QJ2
♦A54
♣109

Board (30) Av: NS=+70

Contract	N-S	E-W	IMP	Tie
3S S 3	140		2	4
3S N 3	140		2	1
2S S 3	140		2	7
2S S 2	110		1	17
1NT W-2	100		1	1
1NT E-2	100		1	2
3C E-1	50	50	-1	2
3S S-1		50	-3	8
2S S-1		50	-3	1
2S N-1		50	-3	1
3C W 3		110	-5	1
3C E 4		130	-5	1

18th NEC CUP Qualifying Round 6 Wednesday, April 17, 2013

38

♠ K865
♥ 108
♦ A954
♣ AJ3

♠ AQJ7
♥ AKQ
♦ J1082
♣ Q4

♠ 93
♥ J76432
♦ Q73
♣ 72

♠ 1042
♥ 95
♦ K6
♣ K109865

Board (38)

N-S	E-W	Contract	L	N-S	E-W	IMP
41	44	3H	E-1 S2	100		
44	41	1D	W 1 HT		70	

39

♠ 104
♥ KQ95
♦ J9842
♣ 75

♠ Q752
♥ AJ874
♦ 107
♣ 106

♠ K963
♥ 2
♦ AKQ
♣ AQJ42

♠ AJ8
♥ 1063
♦ 653
♣ K983

Board (39)

N-S	E-W	Contract	L	N-S	E-W	IMP
41	44	4S	E 4 D3	620		
44	41	4S	E 4 D6	620		

40

♠ J106
♥ K104
♦ J
♣ Q109764

♠ AQ95
♥ A9752
♦ A532
♣

♠ 42
♥ Q86
♦ 98764
♣ KJ5

♠ K873
♥ J3
♦ KQ10
♣ A832

Board (40)

N-S	E-W	Contract	L	N-S	E-W	IMP
41	44	3H	E 5 CA	200		
44	41	2H	W 3 SJ	140		

41

♠ 4
♥ AJ10
♦ 952
♣ QJ9742

♠ 765
♥ Q64
♦ KQ1084
♣ K10

♠ J1092
♥ K32
♦ 76
♣ A853

♠ AKQ83
♥ 9875
♦ AJ3
♣ 6

Board (41)

N-S	E-W	Contract	L	N-S	E-W	IMP
41	44	2H	S 3 DK	140		
44	41	3NT	E-2 SK	200		

42

♠ AKQ1052
♥ AK
♦ Q7
♣ 1063

♠ 86
♥ QJ1053
♦ K943
♣ A4

♠ J743
♥ 8
♦ AJ82
♣ 9872

♠ 9
♥ 97642
♦ 1065
♣ KQJ5

Board (42)

N-S	E-W	Contract	L	N-S	E-W	IMP
41	44	5C	N-3 DA	300		
44	41	3S	N 3 H8	140		

43

♠ KJ10984
♥ A953
♦ J
♣ 65

♠ Q765
♥ QJ
♦ KQ54
♣ QJ2

♠ K10762
♥ 9862
♣ K1084

♠ A32
♥ 84
♦ A1073
♣ A973

Board (43)

N-S	E-W	Contract	L	N-S	E-W	IMP
41	44	2S	N 3 H6	140		
44	41	4S	N-1 H2		50	

44

♠ 82
♥ AQ9643
♦ 5
♣ 8752

♠ AJ65
♥ K1052
♦ Q4
♣ KQ9

♠ 1073
♥ 7
♦ K10762
♣ A1064

♠ KQ94
♥ J8
♦ AJ983
♣ J3

Board (44)

N-S	E-W	Contract	L	N-S	E-W	IMP
41	44	1NT	W 1 H6	90		
44	41	3D	W-1 D5	50		