

Consolation Pairs Section B Friday, April 26, 2013

1

♠ 98742  
♥ A83  
♦ 1093  
♣ 109

♠ A  
♥ QJ975  
♦ A654  
♣ 752

♠ 1065  
♥ K106  
♦ KJ8  
♣ K864

♠ KQJ3  
♥ 42  
♦ Q72  
♣ AQJ3

W N E S

Board (1)

N-S	E-W	Contract	L	N-S	E-W	IMP
4	1	3S	N-1 S5		50	-20
6	5	3S	N 3 H6	140		5
7	3	3S	N 3 S3	140		5
9	2	3S	N 3 H3	140		5
10	8	2S	S 3 HQ	140		5

2

♠ 953  
♥ KJ52  
♦ QJ8  
♣ 843

♠ 1074  
♥ 1094  
♦ AK75  
♣ K52

♠ KQ2  
♥ A763  
♦ 1063  
♣ QJ10

♠ AJ86  
♥ Q8  
♦ 942  
♣ A976

W N E S

Board (2)

N-S	E-W	Contract	L	N-S	E-W	IMP
4	1	1NT W 1 H2			90	-3
6	5	1NT W-1 S3	50			17
7	3	1NT W 1 C8			90	-3
9	2	1NT E 1 D9			90	-3
10	8	1NT W 2 H2			120	-8

3

♠ 1042  
♥ Q6  
♦ A103  
♣ AKJ65

♠ K9873  
♥ K108542  
♦  
♣ 32

♠ J5  
♥ J7  
♦ K9875  
♣ Q1097

♠ AQ6  
♥ A93  
♦ QJ642  
♣ 84

W N E S

Board (3)

N-S	E-W	Contract	L	N-S	E-W	IMP
4	1	3NT N-1 HJ			50	-8
6	5	3NT S-1 S7			50	-8
7	3	3NT S-1 H3			50	-8
9	2	3NTxS-1 H5		100		-17
10	8	3NT S 3 S3	400			41

4

♠ AK95  
♥ KJ10543  
♦  
♣ 853

♠ Q104  
♥ A  
♦ KJ10743  
♣ 974

♠ J63  
♥ 8762  
♦ Q952  
♣ K10

♠ 872  
♥ Q9  
♦ A86  
♣ AQJ62

W N E S

Board (4)

N-S	E-W	Contract	L	N-S	E-W	IMP
1	3	4H	N 6 D5	680		0
5	2	4H	N 6 CK	680		0
7	6	4H	S 6 CK	680		0
8	4	4H	N 6 D2	680		0
10	9	4H	N 6 DQ	680		0

5

♠ AQ73  
♥ KJ73  
♦ AK10  
♣ 109

♠ J6  
♥ A8  
♦ J932  
♣ K8532

♠ K9842  
♥ 54  
♦ Q876  
♣ 64

♠ 105  
♥ Q10962  
♦ 54  
♣ AQJ7

W N E S

Board (5)

N-S	E-W	Contract	L	N-S	E-W	IMP
1	3	4H	N 4 C6	620		0
5	2	4H	S 4 SJ	620		0
7	6	4H	N 4 C6	620		0
8	4	4H	N 4 C6	620		0
10	9	4H	S 4 SJ	620		0

6

♠ 2  
♥ AQJ76  
♦ J863  
♣ 843

♠ 8763  
♥ 83  
♦ K94  
♣ AKJ5

♠ K95  
♥ K52  
♦ A10752  
♣ Q6

♠ AQJ104  
♥ 1094  
♦ Q  
♣ 10972

W N E S

Board (6)

N-S	E-W	Contract	L	N-S	E-W	IMP
1	3	1S	S-1 CA		50	20
5	2	2NT	E 4 HT		180	3
7	6	1NT	E 2 CT		120	12
8	4	3NT	E 4 HT		630	-42
10	9	3H	N-3 CQ		150	7

7

♠ 4  
♥ J9652  
♦ KJ3  
♣ AQ104

♠ J9  
♥ 43  
♦ Q10742  
♣ K963

N		E
W	—	
	Ⓢ	

♠ AK872  
♥ AQ  
♦ A86  
♣ 872

♠ Q10653  
♥ K1087  
♦ 95  
♣ J5

Board (7)

N-S	E-W	Contract	L	N-S	E-W	IMP
2	4	5Dx	W-5 S4	1400		58
6	3	3NT	E-4 H7	400		-3
8	7	2S	N 4 SA	170		-28
9	5	3S	E-2 H7	200		-24
10	1	3NT	E-4 H7	400		-3

8

♠ 76  
♥ J732  
♦ J2  
♣ J10985

♠ KJ9  
♥ K9  
♦ A98743  
♣ 43

N		E
W	—	
	Ⓢ	

♠ Q10432  
♥ 864  
♦ Q  
♣ AQ76

♠ A85  
♥ AQ105  
♦ K1065  
♣ K2

Board (8)

N-S	E-W	Contract	L	N-S	E-W	IMP
2	4	2H	S 2 C4	110		19
6	3	2D	E-1 S7	50		11
8	7	2S	E 3 CK		140	-14
9	5	2D	W 2 CJ		90	-6
10	1	2S	E 2 S4		110	-10

9

♠ AK93  
♥ 1074  
♦ K74  
♣ 765

♠ Q4  
♥ KQ2  
♦ J65  
♣ KJ843

N		E
W	—	
	Ⓢ	

♠ 872  
♥ A9853  
♦ A1098  
♣ 10

♠ J1065  
♥ J6  
♦ Q32  
♣ AQ92

Board (9)

N-S	E-W	Contract	L	N-S	E-W	IMP
2	4	3H	E-1 H6	100		6
6	3	1NT	S 1 C4	90		5
8	7	3H	W-1 SA	100		6
9	5	3D	W 4 SA		130	-24
10	1	2S	N 2 CT	110		7

10

♠ Q3  
♥ A76  
♦ 96542  
♣ K43

♠ 9876  
♥ 1032  
♦ Q8  
♣ A865

N		E
W	—	
	Ⓢ	

♠ J10542  
♥ 5  
♦ AJ  
♣ J10972

♠ AK  
♥ KQJ984  
♦ K1073  
♣ Q

Board (10)

N-S	E-W	Contract	L	N-S	E-W	IMP
1	6	4H	S 6 S9	680		3
3	5	4H	S 5 H2	650		-2
7	4	5H	S 5 S2	650		-2
9	8	4H	S 6 S9	680		3
10	2	4H	S 5 CA	650		-2

11

♠ 102  
♥ J972  
♦ AJ1062  
♣ 42

♠ AJ4  
♥ 54  
♦ 8543  
♣ K1096

N		E
W	—	
	Ⓢ	

♠ Q8765  
♥ K63  
♦ K9  
♣ J53

♠ K93  
♥ AQ108  
♦ Q7  
♣ AQ87

Board (11)

N-S	E-W	Contract	L	N-S	E-W	IMP
1	6	1NT	S 2 D8	120		-5
3	5	1NT	S 5 CT	210		9
7	4	3H	N 4 S2	170		4
9	8	1NT	S 3 CT	150		0
10	2	2C	E-2 C7	100		-8

12

♠ Q93  
♥ AKQ654  
♦ 62  
♣ 108

♠ J1054  
♥ 109  
♦ K53  
♣ AK52

N		E
W	—	
	Ⓢ	

♠ K62  
♥ J8732  
♦ 7  
♣ J743

♠ A87  
♥  
♦ AQJ10984  
♣ Q96

Board (12)

N-S	E-W	Contract	L	N-S	E-W	IMP
1	6	4H	N-2 C3		200	-10
3	5	3NT	S-3 S4		300	-23
7	4	3D	S 4 CA	130		28
9	8	3NT	S-3 S4		300	-23
10	2	3D	S 4 HT	130		28

13

♠ J1052  
♥ 5  
♦ 1097  
♣ AQ1095

♠ Q  
♥ Q10764  
♦ AKQ86  
♣ 74

♠ K987  
♥ AK832  
♦ 42  
♣ K3

♠ A643  
♥ J9  
♦ J53  
♣ J862

Board (13)

N-S	E-W	Contract	L	N-S	E-W	IMP
1	9	6H	E-1 C2	100		52
2	7	5H	E 6 HJ		680	-16
4	6	4H	E 5 C6		650	-12
8	5	4H	E 5 C6		650	-12
10	3	4H	E 5 SA		650	-12

14

♠ KQ102  
♥ K87  
♦ A1065  
♣ K4

♠ J  
♥ Q  
♦ J8742  
♣ QJ9732

♠ 986543  
♥ J532  
♦ KQ9  
♣

♠ A7  
♥ A10964  
♦ 3  
♣ A10865

Board (14)

N-S	E-W	Contract	L	N-S	E-W	IMP
1	9	6H	S 6 CQ	980		46
2	7	6H	S-1 SJ		50	-47
4	6	4H	S 7 SJ	510		4
8	5	4H	S 6 D2	480		0
10	3	4H	S 5 CQ	450		-3

15

♠ J75  
♥ KQ10652  
♦ 10862  
♣

♠ 109  
♥ J7  
♦ 974  
♣ 1087632

♠ AK6  
♥ A43  
♦ AK  
♣ KJ954

♠ Q8432  
♥ 98  
♦ QJ53  
♣ AQ

Board (15)

N-S	E-W	Contract	L	N-S	E-W	IMP
1	9	3NT	W-1 S3	50		34
2	7	4C	E 4 DQ		130	16
4	6	5Sx	S-3 D4		800	-46
8	5	4S	S-2 D4		200	10
10	3	3NT	E 4 S3		430	-14

16

♠ 532  
♥ AK1084  
♦ K65  
♣ 82

♠ Q1064  
♥ QJ5  
♦ J1087  
♣ KJ

♠ A8  
♥ 972  
♦ AQ2  
♣ 107654

♠ KJ97  
♥ 63  
♦ 943  
♣ AQ93

Board (16)

N-S	E-W	Contract	L	N-S	E-W	IMP
2	1	1NT	N-1 C5		50	-4
3	8	1NT	N-1 C5		50	-4
5	7	1NT	N 1 C5	90		16
9	6	1NT	N-2 C5		100	-12
10	4	Passout				4

17

♠ Q4  
♥ J8742  
♦ 92  
♣ 10764

♠ AJ6532  
♥ 9  
♦ 74  
♣ 9853

♠ 1098  
♥ AKQ63  
♦ K865  
♣ K

♠ K7  
♥ 105  
♦ AQJ103  
♣ AQJ2

Board (17)

N-S	E-W	Contract	L	N-S	E-W	IMP
2	1	2D	S-1 D7		50	-15
3	8	2D	S 3 H9	110		6
5	7	4S	W-1 D9	50		-3
9	6	3C	N 3 H9	110		6
10	4	3C	S 3 H9	110		6

18

♠ 106  
♥ A8654  
♦ J6  
♣ A975

♠ A732  
♥ KQ  
♦ Q3  
♣ KQJ103

♠ Q85  
♥ 92  
♦ K98542  
♣ 86

♠ KJ94  
♥ J1073  
♦ A107  
♣ 42

Board (18)

N-S	E-W	Contract	L	N-S	E-W	IMP
2	1	3D	E-2 D2	100		1
3	8	3D	E-2 C4	100		1
5	7	3H	N 3 C8	140		6
9	6	3NT	W-1 H6	50		-9
10	4	3NT	W-2 H5	100		1

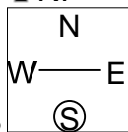
19

♠AKQ7  
♥A102  
♦Q1053  
♣K7

♠103  
♥9865  
♦AJ9  
♣AQJ4

♠J82  
♥KJ73  
♦876  
♣862

♠9654  
♥Q4  
♦K42  
♣10953



Board (19)

N-S	E-W	Contract	L	N-S	E-W	IMP
1	7	1NT N 3	H9	150		4
3	2	2NT N 2	H9	120		-1
4	9	1NT N 1	H8	90		-6
6	8	2NT N 3	C4	150		4
10	5	1NT N 2	H9	120		-1

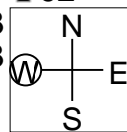
20

♠972  
♥QJ87  
♦K1052  
♣92

♠AK2  
♥AK2  
♦Q743  
♣AK8654

♠AKQJ86  
♥10  
♦A9  
♣J1073

♠10543  
♥96543  
♦J86  
♣Q



Board (20)

N-S	E-W	Contract	L	N-S	E-W	IMP
1	7	3S S 3	CQ	140		-26
3	2	4Sx S 4	CQ	790		35
4	9	4S S-1	CQ		100	-43
6	8	3NT S 3	CQ	600		16
10	5	4S S 4	CQ	620		18

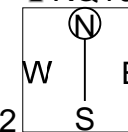
21

♠K82  
♥QJ2  
♦J94  
♣KQ103

♠A93  
♥AK1098653  
♦A  
♣J

♠J1054  
♥74  
♦Q6532  
♣65

♠Q76  
♥  
♦K1087  
♣A98742



Board (21)

N-S	E-W	Contract	L	N-S	E-W	IMP
1	7	1H E 5	SJ		200	32
3	2	4H W 5	D2		450	5
4	9	1Cx N-4	CJ		1100	-50
6	8	4H E 4	C6		420	8
10	5	4H E 5	SJ		450	5

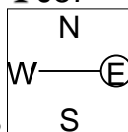
22

♠Q10  
♥KQ942  
♦KQJ  
♣J87

♠KJ742  
♥J108  
♦A5  
♣A62

♠953  
♥A763  
♦9632  
♣K4

♠A86  
♥5  
♦10874  
♣Q10953



Board (22)

N-S	E-W	Contract	L	N-S	E-W	IMP
2	8	3S E 5	D2		200	-14
4	3	4H N-1	S2		50	5
5	1	2S E 4	S3		170	-9
7	9	2S E 4	D2		170	-9
10	6	3H S 3	D7	140		27

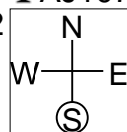
23

♠KJ8  
♥J  
♦Q85  
♣AJ10743

♠AQ7  
♥AQ943  
♦AKJ9  
♣8

♠93  
♥7652  
♦7642  
♣Q95

♠106542  
♥K108  
♦103  
♣K62



Board (23)

N-S	E-W	Contract	L	N-S	E-W	IMP
2	8	6S W-1	D2		100	52
4	3	4S W 5	HJ		650	-12
5	1	4S W 6	HJ		680	-16
7	9	4S W 5	DQ		650	-12
10	6	4H E 5	CQ		650	-12

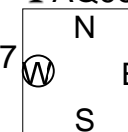
24

♠K9  
♥Q95  
♦K752  
♣AQ98

♠AJ87  
♥62  
♦A1064  
♣1043

♠10532  
♥1043  
♦Q3  
♣J752

♠Q64  
♥AKJ87  
♦J98  
♣K6



Board (24)

N-S	E-W	Contract	L	N-S	E-W	IMP
2	8	1NT W 2	D2		120	-8
4	3	2S E 2	S2		110	-6
5	1	2Cx S-1	HA		100	-5
7	9	2C S-1	HA		50	3
10	6	3NT W-1	D2	50		16

25

♠ J832  
♥ 9842  
♦ 762  
♣ A10

♠ Q  
♥ AQ65  
♦ K953  
♣ K873

♠ AK10765  
♥ K10  
♦ AJ4  
♣ Q6

♠ 94  
♥ J73  
♦ Q108  
♣ J9542

W — E  
S

♠ Q  
♥ AQ65  
♦ K953  
♣ K873

Board (25)

N-S	E-W	Contract	L	N-S	E-W	IMP
3	9	3S	S 3 S3	140		7
5	4	3NT	S 5 D5	460		41
6	2	3NT	S-1 C4		50	-16
8	1	4S	N-1 S9		50	-16
10	7	4S	S-1 D8		50	-16

26

♠ 862  
♥ 2  
♦ K1042  
♣ 85432

♠ Q9753  
♥ Q73  
♦ J865  
♣ J

♠ AKJ10  
♥ AK1098  
♦ A  
♣ 976

♠ 4  
♥ J654  
♦ Q973  
♣ AKQ10

W — E  
S

♠ Q9753  
♥ Q73  
♦ J865  
♣ J

Board (26)

N-S	E-W	Contract	L	N-S	E-W	IMP
3	9	1H	S 2 CA	110		13
5	4	2H	S-1 CA		100	-12
6	2	1H	S 1 CA	80		10
8	1	2D	E-1 HK	100		13
10	7	3S	S-2 CA		200	-24

27

♠ 9  
♥ AQ1083  
♦ K32  
♣ Q852

♠ K43  
♥ J52  
♦ QJ7654  
♣ 6

♠ QJ10765  
♥ 4  
♦ 109  
♣ KJ93

♠ A82  
♥ K976  
♦ A8  
♣ A1074

W — E  
S

♠ K43  
♥ J52  
♦ QJ7654  
♣ 6

Board (27)

N-S	E-W	Contract	L	N-S	E-W	IMP
3	9	3D	E 4 H4	130		3
5	4	3S	S-2 DA	100		6
6	2	3NT	W 3 HQ	400		-29
8	1	3D	E 3 SQ	110		6
10	7	3S	S-1 DA	50		14