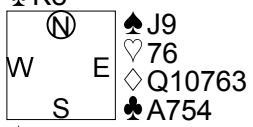


2013 YEH BROS CUP Open Pair Qualifying Section ABCD Thursday, April 25, 2013

1

♠K2
♥AKQJ10952
♦4
♣K8

♠Q1087654
♥84
♦A5
♣103



♠A3
♥3
♦KJ982
♣QJ962

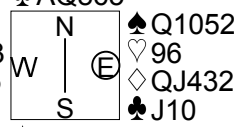
Board (1)

N-S	E-W	Contract	L	N-S	E-W	IMP
A04	A01	5H	N-1 H8		50	-125
A06	A05	5H	N 5 SJ	450		76
A07	A03	3NT	S 6 S5	490		86
A09	A02	5H	N 5 SJ	450		76
A10	A08	6H	N 6 CA	980		224
B02	B04	6H	N-1 SJ		50	-125
B06	B03	4H	S 5 DA	450		76
B08	B07	6H	N-1 H6		50	-125
B09	B05	6NT	N 6 SJ	990		225
B10	B01	5NT	N-1 D2		50	-125
C02	C01	6H	N-1 SJ		50	-125
C03	C08	5H	N 5 SJ	450		76
C05	C07	4H	N 5 SJ	450		76
C09	C06	6H	N-2 CA		100	-143
C10	C04	6H	N-1 SJ		50	-125
D01	D10	4H	N 5 S5	450		76
D02	D05	6H	N-1 S3		50	-125
D03	D07	6H	N-1 SJ		50	-125
D06	D04	5H	N 5 SJ	450		76
D08	D09	5H	N 5 SJ	450		76

2

♠87
♥AQJ108
♦A
♣AQ865

♠K9
♥K743
♦1075
♣9732



♠AJ643
♥52
♦K986
♣K4

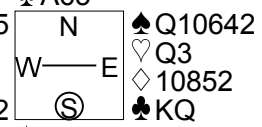
Board (2)

N-S	E-W	Contract	L	N-S	E-W	IMP
A04	A01	4NT	N 4 D2	630		29
A06	A05	6C	N-1 CJ		100	-208
A07	A03	4H	N 5 DQ	650		48
A09	A02	3NT	S 4 D5	630		29
A10	A08	6H	N-2 CJ		200	-227
B02	B04	5H	N 5 DQ	650		48
B06	B03	4H	N 5 C2	650		48
B08	B07	3NT	S 4 SK	630		29
B09	B05	3NT	S 4 C7	630		29
B10	B01	4H	N 4 S2	620		29
C02	C01	6C	N-1 DQ		100	-208
C03	C08	3NT	S 4 C7	630		29
C05	C07	3NT	S 5 D5	660		48
C09	C06	3NT	S 4 D2	630		29
C10	C04	3NT	S 5 D7	660		48
D01	D10	3NT	S 6 DT	690		65
D02	D05	4H	N 5 DQ	650		48
D03	D07	3NT	S 4 D7	630		29
D06	D04	3NT	S 4 H3	630		29
D08	D09	3NT	S 4 C3	630		29

3

♠93
♥AJ109752
♦Q
♣A65

♠J875
♥K4
♦K43
♣J942



♠AK
♥86
♦AJ976
♣10873

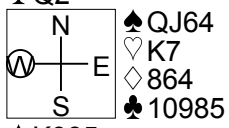
Board (3)

N-S	E-W	Contract	L	N-S	E-W	IMP
A04	A01	4H	N 4 CK	420		16
A06	A05	4H	N 5 CK	450		35
A07	A03	4H	N 4 CK	420		16
A09	A02	4H	N 5 S4	450		35
A10	A08	4H	N 5 S2	450		35
B02	B04	4H	N 4 CK	420		16
B06	B03	4H	N-1 CK		50	-188
B08	B07	4H	N 5 CK	450		35
B09	B05	4H	S 5 S2	450		35
B10	B01	4H	N 4 CK	420		16
C02	C01	3H	N 4 CK	170		-103
C03	C08	4H	N 4 CK	420		16
C05	C07	4H	N 4 CK	420		16
C09	C06	4H	N 4 CK	420		16
C10	C04	3H	N 5 S2	200		-95
D01	D10	4H	N 4 S2	420		16
D02	D05	4H	S 4 C4	420		16
D03	D07	4H	N 4 CK	420		16
D06	D04	4H	N 4 CK	420		16
D08	D09	4H	N 5 S2	450		35

4

♠A10732
♥Q853
♦32
♣Q2

♠AJ10642
♥Q7
♦Q7
♣AKJ73



♠K985
♥9
♦AKJ1095
♣64

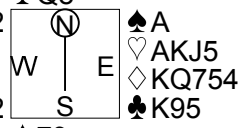
Board (4)

N-S	E-W	Contract	L	N-S	E-W	IMP
A01	A03	5C	E-1 D6	100		135
A05	A02	5Cx	W 6 SA		950	-208
A07	A06	4H	E-1 D3	100		135
A08	A04	3C	W 4 D3		130	47
A10	A09	3C	W 3 D3		110	61
B02	B10	5Sx	N-2 HK		500	-92
B04	B07	3C	W 4 D3		130	47
B05	B03	4Sx	N-1 HK		200	18
B06	B01	4H	W-1 D3	100		135
B08	B09	5C	W 6 SA		620	-124
C01	C07	5Sx	S-5 HK		1400	-282
C03	C02	3C	W 3 D3		110	61
C04	C09	4Hx	W 4 SA		790	-170
C06	C08	5Cx	W-1 D3	200		169
C10	C05	5Sx	N-2 HK		500	-92
D01	D09	5Cx	W-1 SA	200		169
D05	D07	4Sx	N-1 HK		200	18
D06	D03	5Sx	N-2 HK		500	-92
D08	D04	3C	E 4 D2		130	47
D10	D02	4S	N-2 CT		200	18

5

♠QJ986
♥102
♦10932
♣Q8

♠K10542
♥Q6
♦
♣A76432



♠73
♥98743
♦AJ86
♣J10

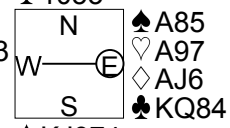
Board (5)

N-S	E-W	Contract	L	N-S	E-W	IMP
A01	A03	3NT	E 6 CJ		490	49
A05	A02	3NT	E 6 S7		490	49
A07	A06	3NT	E 5 H3		460	61
A08	A04	6C	E 7 CJ		940	-138
A10	A09	3NT	E 6 S7		490	49
B02	B10	3NT	E 6 CJ		490	49
B04	B07	6C	W 7 H2		940	-138
B05	B03	6C	E 7 HT		940	-138
B06	B01	5C	E 7 CJ		440	80
B08	B09	6C	E 7 DA		940	-138
C01	C07	3NT	W 6 CJ		490	49
C03	C02	3NT	E 6 CJ		490	49
C04	C09	3C	W 5 CJ		150	176
C06	C08	2H	E 3 CJ		140	177
C10	C05	3NT	W 6 SQ		490	49
D01	D09	3NT	W 6 SQ		490	49
D05	D07	6C	E 7 DA		940	-138
D06	D03	6C	E 7 H3		940	-138
D08	D04	5C	E 7 DA		440	80
D10	D02	6C	E 7 CT		940	-138

6

♠Q1032
♥Q102
♦1054
♣1053

♠6
♥KJ843
♦K82
♣A962



♠KJ974
♥65
♦Q973
♣J7

Board (6)

N-S	E-W	Contract	L	N-S	E-W	IMP
A01	A03	6C	E 6 S6		1370	-236
A05	A02	6C	W 6 S4		1370	-236
A07	A06	4H	E 5 S4		650	-64
A08	A04	4H	W 5 S3		650	-64
A10	A09	5H	E 5 S4		650	-64
B02	B10	6H	W-1 S3	100		161
B04	B07	6H	W-1 S3	100		161
B05	B03	6H	E-1 S3	100		161
B06	B01	6C	E 6 S3		1370	-236
B08	B09	6H	W-1 S3	100		161
C01	C07	4H	E 6 S4		680	-73
C03	C02	6H	W-1 S3	100		161
C04	C09	4H	W 5 S2		650	-64
C06	C08	4H	W 5 S3		650	-64
C10	C05	4H	W 5 S3		650	-64
D01	D09	4Sx	S-4 S6		800	-111
D05	D07	6H	W-1 S3	100		161
D06	D03	6H	W-1 S3	100		161
D08	D04	7D	E-3 S7	300		213
D10	D02	4H	W 5 S3		650	-64

2013 YEH BROS CUP Open Pair Qualifying Section ABCD Thursday, April 25, 2013

7

♠642
♥J8
♦AKQ843
♣Q8

♠QJ1075
♥AK54
♦J75
♣6

N
W—E
S

♠93
♥Q63
♦62
♣KJ9754

♠AK8
♥10972
♦109
♣A1032

8

♠J32
♥QJ75432
♦9
♣Q6

♠KQ65
♥AK
♦K103
♣J754

N
W—E
S

♠A1097
♥109
♦AJ2
♣A1093

♠84
♥86
♦Q87654
♣K82

9

♠7
♥AKQJ42
♦J982
♣87

♠A109532
♥10
♦Q73
♣K64

N
W—E
S

♠QJ864
♥975
♦106
♣AJ3

♠K
♥863
♦AK54
♣Q10952

Board (7)

N-S	E-W	Contract	L	N-S	E-W	IMP
A02	A04	3NT S	4 HK	630		13
A06	A03	3NT S	3 H3	600		-6
A08	A07	3NT S	3 HA	600		-6
A09	A05	3D N	3 S9	110		-200
A10	A01	3NT S	3 HA	600		-6
B03	B10	3Cx E	-3 DA	800		98
B05	B08	3NT N	3 HA	600		-6
B06	B04	3NT S	3 SQ	600		-6
B07	B02	3NT S	4 HK	630		13
B09	B01	3NT S	4 D2	630		13
C01	C05	3NT S	4 HA	630		13
C03	C04	3NTxS	3 SQ	750		72
C06	C10	3NT S	3 SQ	600		-6
C08	C02	3NT S	3 SQ	600		-6
C09	C07	3NT S	5 HA	660		31
D01	D02	3NT S	3 SQ	600		-6
D03	D10	3NT S	3 H4	600		-6
D04	D07	3NT S	3 SQ	600		-6
D05	D09	3NT S	3 SQ	600		-6
D08	D06	3NT S	4 HK	630		13

Board (8)

N-S	E-W	Contract	L	N-S	E-W	IMP
A02	A04	4S W	6 D9	480		5
A06	A03	4S W	6 D9	480		5
A08	A07	4S W	6 D9	480		5
A09	A05	4S E	6 H8	480		5
A10	A01	2Hx N	-2 HT	300		101
B03	B10	4S W	6 DT	480		5
B05	B08	6S E	6 HQ	980		-210
B06	B04	4S W	6 D9	480		5
B07	B02	4S W	6 D9	480		5
B09	B01	4S W	6 D2	480		5
C01	C05	4S W	6 D9	480		5
C03	C04	4S W	6 D9	480		5
C06	C10	4S W	6 D9	480		5
C08	C02	4S W	6 D9	480		5
C09	C07	4S W	6 D9	480		5
D01	D02	4S W	6 D9	480		5
D03	D10	4S E	6 D9	480		5
D04	D07	4S W	6 D9	480		5
D05	D09	4S W	6 D9	480		5
D08	D06	3NT W	5 H5	460		24

Board (9)

N-S	E-W	Contract	L	N-S	E-W	IMP
A02	A04	5H N	-1 SQ	50		-80
A06	A03	4H N	4 SQ	420		117
A08	A07	5H N	-1 SJ	50		-80
A09	A05	5Sx W	-1 HK	200		20
A10	A01	4H N	4 SQ	420		117
B03	B10	6H N	-2 CA	100		-109
B05	B08	4H S	-2 SQ	100		-109
B06	B04	4H N	4 SQ	420		117
B07	B02	5H N	-1 SQ	50		-80
B09	B01	5Hx N	-1 D2	100		-109
C01	C05	4H S	4 SQ	420		117
C03	C04	5H N	-1 CA	50		-80
C06	C10	5H N	-1 SQ	50		-80
C08	C02	4H N	4 SQ	420		117
C09	C07	6Hx N	-2 SQ	300		-169
D01	D02	4H N	4 SQ	420		117
D03	D10	5H N	-1 SQ	50		-80
D04	D07	4H N	4 H7	420		117
D05	D09	5Sx E	-1 DK	200		20
D08	D06	4H N	4 SQ	420		117

10

♠AQJ8
♥1095
♦J6
♣AKJ4

♠K9543
♥K863
♦AK4
♣8

N
W—E
S

♠62
♥J
♦109732
♣Q10962

♠107
♥AQ742
♦Q85
♣753

11

♠A10986
♥Q4
♦K
♣AQ765

♠432
♥103
♦QJ75
♣KJ104

N
W—E
S

♠KQJ
♥AKJ8765
♦84
♣8

♠75
♥92
♦A109632
♣932

12

♠AK106
♥K102
♦AJ6
♣964

♠J
♥AQJ7
♦K43
♣AKJ52

N
W—E
S

♠Q875
♥83
♦Q1052
♣1083

♠9432
♥9654
♦987
♣Q7

Board (10)

N-S	E-W	Contract	L	N-S	E-W	IMP
A01	A06	3NT N	4 HJ	630		164
A03	A05	4H N	-1 S6	100		-80
A07	A04	4H N	-1 S6	100		-80
A09	A08	4H N	-1 S6	100		-80
A10	A02	4H N	-1 S6	100		-80
B02	B01	4H N	-1 S6	100		-80
B03	B08	3NT N	3 S6	600		159
B04	B10	4H N	-1 S2	100		-80
B05	B07	4H N	-1 CT	100		-80
B09	B06	3NT N	3 D2	600		159
C01	C08	3H N	3 S6	140		16
C02	C06	3NT N	3 S6	600		159
C04	C05	4H N	-1 CT	100		-80
C07	C10	2Sx W	-3 D2	800		219
C09	C03	4H N	-1 S6	100		-80
D01	D06	3NT N	-1 DT	100		-80
D03	D02	4H N	-1 S6	100		-80
D07	D09	4H N	-1 S3	100		-80
D08	D05	4H N	4 S6	620		164
D10	D04	3NT N	-1 S6	100		-80

Board (11)

N-S	E-W	Contract	L	N-S	E-W	IMP
A01	A06	4H E	-1 S5	50		20
A03	A05	4H E	-1 S7	50		20
A07	A04	4H E	4 S7	420		-176
A09	A08	4H E	-1 S7	50		20
A10	A02	4H E	-1 S7	50		20
B02	B01	4H E	-1 S7	50		20
B03	B08	4Hx E	4 DA	590		-221
B05	B07	4H W	-1 S7	50		20
B09	B06	4H E	-1 S7	50		20
B10	B04	4H E	-1 S2	50		20
C01	C08	4H E	-1 S7	50		20
C02	C06	4H W	-1 S7	50		20
C04	C05	4H E	-1 S6	50		20
C07	C10	4H E	-1 D2	50		20
C09	C03	4Hx E	-1 DA	100		57
D01	D06	4H E	-1 S7	50		20
D03	D02	4H E	-1 S7	50		20
D07	D09	4H E	-1 S3	50		20
D08	D05	4H E	-1 S3	50		20
D10	D04	4H E	-1 S7	50		20

Board (12)

N-S	E-W	Contract	L	N-S	E-W	IMP
A01	A06	1NTxN	-3 D3	800		-228
A03	A05	3C W	4 SA	130		5
A07	A04	3D E	-2 CQ	100		115
A09	A08	3NT E	4 H6	430		-127
A10	A02	2S S	-2 CA	200		-29
B02	B01	3C W	3 C4	110		20
B03	B08	3D W	-1 H3	50		90
B05	B07	5Cx E	-1 C2	100		115
B09	B06	2D S	-4 CK	400		-118
B10	B04	3S N	-3 C3	300		-75
C01	C08	3D E	-1 H5	50		90
C02	C06	3C W	4 C6	130		5
C04	C05	3NT W	-1 SA	50		90
C07	C10	1NT W	3 H2	150		-4
C09	C03	3C W	3 C6	110		20
D01	D06	2NT W	3 S6	150		-4
D03	D02	3D E	3 D9	110		20
D07	D09	3C W	4 SA	130		5
D08	D05	3C E	4 C3	130		5
D10	D04	2C W	4 SA	130		5

2013 YEH BROS CUP Open Pair Qualifying Section ABCD Thursday, April 25, 2013

13 ♠ 109763
♥ 9
♦ K10643
♣ J5

♠ AQ8 ♠ K42
♥ A102 ♥ 843
♦ Q82 ♦ J75
♣ AQ64 ♣ K873

♠ J5
♥ KQJ765
♦ A9
♣ 1092

14 ♠ J986
♥ QJ52
♦ Q8
♣ 732

♠ A1042 ♠ KQ75
♥ K107 ♥ 83
♦ AJ105 ♦ 72
♣ A5 ♣ KQJ96

♠ 3
♥ A964
♦ K9643
♣ 1084

15 ♠ A6
♥ AK108
♦ J875
♣ KJ10

♠ Q85432 ♠ K9
♥ 95 ♥ 743
♦ 2 ♦ AK943
♣ A974 ♣ Q63

♠ J107
♥ QJ62
♦ Q106
♣ 852

Board (13)

N-S	E-W	Contract	L	N-S	E-W	IMP
A01	A09	2NT W 2	H9			120
A02	A07	2H S-1	H2			100
A04	A06	3NT W-1	H9	100		89
A08	A05	1NT W 3	D4			150
A10	A03	1NT W 3	D4			150
B02	B03	1NT W 3	D4			150
B05	B10	1NT W 2	ST			120
B07	B01	3NT W-3	H9	300		166
B08	B06	2H S-1	D2			100
B09	B04	3NT W-3	H9	300		166
C04	C01	3NT W 3	D4		600	-203
C06	C05	2NT W 2	H9			120
C07	C03	2S N-2	C7			200
C09	C02	2NT W 2	H9			120
C10	C08	2Hx S-1	H2			200
D01	D08	3NT W-2	ST	200		130
D03	D04	2H N-1	D2			100
D05	D10	2NT W 2	H9			120
D06	D09	2Hx S-1	D2			200
D07	D02	1NT W 2	ST			120

Board (14)

N-S	E-W	Contract	L	N-S	E-W	IMP
A01	A09	4S W 5	DQ			450
A02	A07	4S W 4	HQ			420
A04	A06	4S W 4	HQ			420
A08	A05	4S W 5	HQ			450
A10	A03	4S W 4	HQ			420
B02	B03	4S W 4	HQ			420
B05	B10	4S W 4	DQ			420
B07	B01	2D S-3	H7			150
B08	B06	4NT E 4	H4			430
B09	B04	4S W 4	D2			420
C04	C01	4S E 4	D5			420
C06	C05	4S W 4	HQ			420
C07	C03	4S E 4	H6			420
C09	C02	4S E 4	H2			420
C10	C08	4S W 4	HQ			420
D01	D08	4S W 4	HQ			420
D03	D04	4S E 4	C2			420
D05	D10	4S W 4	HQ			420
D06	D09	4S W 5	C2			450
D07	D02	3S E 4	D3			170

Board (15)

N-S	E-W	Contract	L	N-S	E-W	IMP
A01	A09	3S W 3	HA			140
A02	A07	3S W 3	HA			140
A04	A06	3NT N-1	D4			100
A08	A05	4H S-2	D2			200
A10	A03	2S W 3	HA			140
B02	B03	3H S-2	D2			200
B05	B10	4Sx E 4	HK			590
B07	B01	3H S-2	D2			200
B08	B06	3S W 3	HK			140
B09	B04	2S E 3	D2			140
C04	C01	2NT N 2	DA	120		127
C06	C05	3S W 4	HK		170	-9
C07	C03	3D E-2	H6	100		120
C09	C02	3S W 3	HA			140
C10	C08	4H N-2	SK			200
D01	D08	3S W 3	HA			140
D03	D04	3S E 3	HA			140
D05	D10	3S W 3	HK			140
D06	D09	4H S-3	D2		300	-72
D07	D02	3S W 3	HA			140

16 ♠ A853
♥ Q10
♦ AJ6
♣ J765

♠ K109742 ♠ QJ6
♥ 8654 ♥ AK73
♦ Q5 ♦ 832
♣ 10 ♣ 983

♠ J92
♥ K10974
♣ AKQ42

17 ♠ 8
♥
♦ Q97432
♣ KQ10654

♠ AQ43 ♠ J10
♥ A10543 ♥ J762
♦ A108 ♦ KJ65
♣ 7 ♣ AJ2

♠ K97652
♥ KQ98
♣ 983

18 ♠ AJ73
♥ K74
♦ AK86
♣ 97

♠ Q82 ♠ K654
♥ 9532 ♥ 6
♦ QJ109 ♦ 754
♣ A8 ♣ QJ642

♠ 109
♥ AQJ108
♦ 32
♣ K1053

Board (16)

N-S	E-W	Contract	L	N-S	E-W	IMP
A02	A01	5C S 5	H4			400
A03	A08	5C N 5	HK			400
A05	A07	5C S 5	HK			400
A09	A06	5C N 5	HK			400
A10	A04	3NT N 6	HA			490
B01	B05	3Sx W-1	S5			200
B03	B04	3Sx W-1	S3			200
B06	B10	3Sx W-1	HQ			200
B08	B02	3NT N 3	SQ			400
B09	B07	5C S 5	H6			400
C02	C05	5C N 5	HA			400
C03	C01	5D N 5	HK			400
C04	C08	6C S 6	S4			920
C06	C07	5C S 5	H2			400
C09	C10	3NT N 5	HA			460
D01	D07	3NT N 3	SQ			400
D03	D08	5C S 5	H6			400
D05	D04	5C S 5	H5			400
D09	D02	3NT N 5	SQ			460
D10	D06	3NT N 3	HK			400

Board (17)

N-S	E-W	Contract	L	N-S	E-W	IMP
A02	A01	4H E-1	S6		50	163
A03	A08	4H W 4	CK		420	-8
A05	A07	4H E-1	C9		50	163
A09	A06	4Cx N-2	SJ		300	42
A10	A04	4Cx S-3	C7		500	-44
B01	B05	5Cx N-2	HJ		300	42
B03	B04	4H W-1	CK		50	163
B06	B10	5Cx S-4	C2		800	-147
B08	B02	4H W 5	CK		450	-21
B09	B07	3NTxN-7	H3		1700	-295
C02	C05	5Cx S-4	C7		800	-147
C03	C01	4H W 5	CK		450	-21
C04	C08	5Cx S-3	C6		500	-44
C06	C07	5H E-2	C3		100	184
C09	C10	5Cx N-3	SJ		500	-44
D01	D07	5Cx N-2	H6		300	42
D03	D08	4H W-2	CK		100	184
D05	D04	5Cx S-3	C7		500	-44
D09	D02	5Cx S-4	C7		800	-147
D10	D06	4H E 5	S8		450	-21

Board (18)

N-S	E-W	Contract	L	N-S	E-W	IMP
A02	A01	4H S 4	CQ		620	-14
A03	A08	4H S 4	DQ		620	-14
A05	A07	4H S 4	DQ		620	-14
A09	A06	4H S 5	DJ		650	5
A10	A04	4H S 4	DQ		620	-14
B01	B05	4H N 4	CQ		620	-14
B03	B04	3NT N 4	S3		630	-14
B06	B10	4H S 4	DQ		620	-14
B08	B02	4H S 5	DQ		650	5
B09	B07	4H S 4	DQ		620	-14
C02	C05	4H N 4	H6		620	-14
C03	C01	4H S 5	DQ		650	5
C04	C08	4H S 4	DQ		620	-14
C06	C07	4H N 4	CQ		620	-14
C09	C10	4H N 4	D2		620	-14
D01	D07	3Dx W-5	H4	1100		190
D03	D08	4H S 5	DQ		650	5
D05	D04	4H N 4	S5		620	-14
D09	D02	4H N 4	S5		620	-14
D10	D06	4H N 4	CQ		620	-14

2013 YEH BROS CUP Open Pair Qualifying Section ABCD Thursday, April 25, 2013

19

♠ 10752
♥ 64
♦ Q
♣ KQJ642

♠ K9864
♥ 975
♦ A86
♣ A8

N
W—E
S

♠ AJ
♥ KJ83
♦ K10543
♣ 109

♠ Q3
♥ AQ102
♦ J972
♣ 753

20

♠ 98
♥ QJ
♦ KJ532
♣ 8753

♠ 63
♥ 109842
♦ A74
♣ A102

N
W—E
S

♠ AK74
♥ AK765
♦ 96
♣ Q9

♠ QJ1052
♥ 3
♦ Q108
♣ KJ64

21

♠ J105
♥ 107
♦ 874
♣ QJ753

♠ Q98743
♥ 8
♦ J93
♣ AK6

N
W—E
S

♠ A
♥ KQJ5432
♦ Q102
♣ 104

♠ K62
♥ A96
♦ AK65
♣ 982

Board (19)

N-S	E-W	Contract	L	N-S	E-W	IMP
A01	A07	4Cx	N-2 CT		300	-149
A03	A02	4C	N-3 D4		150	-100
A04	A09	4D	E-3 CK	300		66
A06	A08	4S	W-4 C2	400		101
A10	A05	4C	N-2 CT		100	-84
B01	B08	3NT	W-4 CK	400		101
B02	B06	4H	W-4 CK	400		101
B04	B05	4S	W-3 CK	300		66
B07	B10	4Cx	N-2 CT		300	-149
B09	B03	5Cx	N-3 CT		500	-209
C02	C04	4Cx	N-2 CT		300	-149
C06	C03	3D	W-1 CK	100		-5
C08	C07	4Dx	W-4 CK	1100		262
C09	C05	3NT	W-4 CK	400		101
C10	C01	3D	W-1 CK	100		-5
D03	D01	4Cx	N-2 SA		300	-149
D05	D06	3Cx	N-1 SA		100	-84
D07	D10	3C	N-1 C3		50	-62
D08	D02	3NT	E-5 CK	500		134
D09	D04	5Dx	E-3 CK	800		213

Board (20)

N-S	E-W	Contract	L	N-S	E-W	IMP
A01	A07	4H	E 6 SQ		680	-4
A03	A02	4H	E 6 SQ		680	-4
A04	A09	4H	E 6 SQ		680	-4
A06	A08	4H	E 6 SJ		680	-4
A10	A05	4H	E 6 SQ		680	-4
B01	B08	4H	E 6 SQ		680	-4
B02	B06	4H	E 6 SQ		680	-4
B04	B05	4H	W 6 C5		680	-4
B07	B10	4H	E 5 D8		650	16
B09	B03	4H	E 5 C2		650	16
C02	C04	4H	E 5 SQ		650	16
C06	C03	4H	W 5 DK		650	16
C08	C07	4H	E 6 S6		680	-4
C09	C05	4H	E 6 SQ		680	-4
C10	C01	4H	E 6 SQ		680	-4
D03	D01	4H	E 6 SQ		680	-4
D05	D06	4H	E 6 SQ		680	-4
D07	D10	4H	E 6 SQ		680	-4
D08	D02	4H	E 6 SQ		680	-4
D09	D04	4H	E 6 S9		680	-4

Board (21)

N-S	E-W	Contract	L	N-S	E-W	IMP
A01	A07	4H	E 4 DA		420	-66
A03	A02	2H	E 4 DA		170	44
A04	A09	4H	E 4 D2		420	-66
A06	A08	4H	E 4 DK		420	-66
A10	A05	2H	E 4 DA		170	44
B01	B08	4H	E 4 DK		420	-66
B02	B06	3NT	W 4 C5		430	-67
B04	B05	3NT	E-1 DK	50		141
B07	B10	4H	E-1 DA	50		141
B09	B03	4Hx	E 4 DA		590	-143
C02	C04	2H	E 3 DA		140	64
C06	C03	2H	W 4 C8		170	44
C08	C07	4H	E-1 D2	50		141
C09	C05	4H	E-1 DK	50		141
C10	C01	4H	E 4 DA		420	-66
D03	D01	4H	W 4 DA		420	-66
D05	D06	4H	E 4 DK		420	-66
D07	D10	2H	E 4 DA		170	44
D08	D02	4H	E 4 DA		420	-66
D09	D04	4H	E 4 DK		420	-66

22

♠ AQ5
♥ 108643
♦ 73
♣ 732

♠ 8432
♥ K5
♦ KQJ2
♣ 1054

N
W—E
S

♠ J7
♥ QJ92
♦ A965
♣ J98

♠ K1096
♥ A7
♦ 1084
♣ AKQ6

23

♠ J532
♥ J854
♦ 103
♣ AK7

♠ KQ104
♥ 10632
♦ K
♣ QJ106

N
W—E
S

♠ 87
♥ AKQ7
♦ QJ987
♣ 53

♠ A96
♥ 9
♦ A6542
♣ 9842

24

♠ AJ8763
♥ Q5
♦ AKJ
♣ 65

♠ Q109
♥ AK109
♦ 9652
♣ 92

N
W—E
S

♠ K4
♥ J763
♦ Q4
♣ AK1073

♠ 52
♥ 842
♦ 10873
♣ QJ84

Board (22)

N-S	E-W	Contract	L	N-S	E-W	IMP
A02	A08	2H	S 2 HK		110	-8
A04	A03	2H	S 2 DK		110	-8
A05	A01	2H	S 2 DK		110	-8
A07	A09	3S	S 4 DK		170	32
A10	A06	2H	S 2 DK		110	-8
B04	B01	2H	S 2 DK		110	-8
B06	B05	2H	S 2 DK		110	-8
B07	B03	2H	S 2 DK		110	-8
B09	B02	2NT	S 3 DK		150	12
B10	B08	2H	S 2 DK		110	-8
C02	C10	2H	S 2 DK		110	-8
C04	C07	1NT	S 3 DQ		150	12
C05	C03	1NT	S 3 DQ		150	12
C06	C01	2H	S 2 DK		110	-8
C08	C09	1NT	S 3 DK		150	12
D01	D05	2H	S 3 DK		140	12
D04	D02	2NT	S 3 DA		150	12
D06	D07	2H	S 2 DK		110	-8
D08	D10	2H	S 2 DK		110	-8
D09	D03	2H	S 2 DK		110	-8

Board (23)

N-S	E-W	Contract	L	N-S	E-W	IMP
A02	A08	3H	W 3 CA		140	-123
A04	A03	4H	W-2 CA	200		26
A05	A01	4H	W-2 CK	200		26
A07	A09	Passout				-65
A10	A06	4H	E-2 C3	200		26
B04	B01	4H	W-2 CK	200		26
B06	B05	4H	E-3 CK	300		74
B07	B03	Passout				-65
B09	B02	4Hx	W-2 CK	500		152
B10	B08	3NT	W-1 CA	100		-21
C02	C10	4H	E-3 DA	300		74
C04	C07	4H	W-3 DT	300		74
C05	C03	4Hx	W-2 CA	500		152
C06	C01	4H	W-1 CA	100		-21
C08	C09	3H	E-1 C8	100		-21
D01	D05	3H	W 3 CA		140	-123
D04	D02	4H	E-2 DA	200		26
D06	D07	4H	W-2 CA	200		26
D08	D10	4H	E-3 CA	300		74
D09	D03	3Cx	N-5 C3		1400	-317

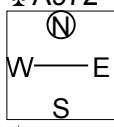
Board (24)

N-S	E-W	Contract	L	N-S	E-W	IMP
A02	A08	2NT	W-2 DA	100		65
A04	A03	2NT	W 2 DK		120	-55
A05	A01	2NT	W-1 DA	50		37
A07	A09	3S	N-2 CA		100	-44
A10	A06	1S	N 1 CK	80		55
B04	B01	3H	W-1 C5	50		37
B06	B05	4H	W-1 DA	50		37
B07	B03	4H	E-1 H3	50		37
B09	B02	1NT	N-2 D2		100	-44
B10	B08	3NT	W-4 DA	200		107
C02	C10	2S	N-1 CA		50	-15
C04	C07	2NT	W 2 S7		120	-55
C05	C03	2S	N-2 CK		100	-44
C06	C01	2H	E 3 S4		140	-66
C08	C09	1S	N 1 CA	80		55
D01	D05	1S	N-1 CK		50	-15
D04	D02	3H	W 3 DK		140	-66
D06	D07	1S	N 1 CA	80		55
D08	D10	2S	S-1 CA		50	-15
D09	D03	3H	E 3 DA		140	-66

2013 YEH BROS CUP Open Pair Qualifying Section ABCD Thursday, April 25, 2013

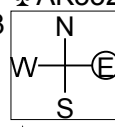
25

♠ A876
 ♥ K64
 ♦ 92
 ♣ A972
 ♠ KQJ1053
 ♥ 82
 ♦ Q
 ♣ J865
 ♠ 942
 ♥ Q1093
 ♦ 10854
 ♣ Q10
 ♠
 ♥ AJ75
 ♦ AKJ763
 ♣ K43



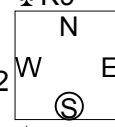
26

♠ A86
 ♥ 7
 ♦ AQ86
 ♣ AK532
 ♠ KQ103
 ♥ Q5
 ♦ 10732
 ♣ 1097
 ♠ J954
 ♥ AJ9863
 ♦ 54
 ♣ Q
 ♠ 72
 ♥ K1042
 ♦ KJ9
 ♣ J864



27

♠ K754
 ♥ 10842
 ♦ K103
 ♣ K9
 ♠ J63
 ♥ J96
 ♦ QJ852
 ♣ 86
 ♠ A2
 ♥ K53
 ♦ A76
 ♣ Q10542
 ♠ Q1098
 ♥ AQ7
 ♦ 94
 ♣ AJ73



Board (25)

N-S	E-W	Contract	L	N-S	E-W	IMP
A03	A09	6H	S 6 DQ	980		222
A05	A04	5D	S-1 SK		50	-80
A06	A02	6D	S-2 SK		100	-106
A08	A01	5C	N-2 S2		100	-106
A10	A07	3NT	S 3 SK	400		83
B02	B05	6H	S 6 SK	980		222
B03	B01	6D	S-2 SK		100	-106
B04	B08	6C	N-3 S2		150	-130
B06	B07	3NT	N 4 S2	430		89
B09	B10	3NT	N 3 HT	400		83
C03	C10	6D	S-2 SK		100	-106
C05	C08	6H	S 6 SK	980		222
C06	C04	6C	S-3 SK		150	-130
C07	C02	6D	S-2 SK		100	-106
C09	C01	3NT	N-2 ST		100	-106
D03	D05	5D	N 6 S5	420		89
D04	D01	7D	N-2 D2		100	-106
D06	D02	3NT	N 4 S2	430		89
D08	D07	6D	S-2 SK		100	-106
D10	D09	3NT	N 4 S3	430		89

Board (26)

N-S	E-W	Contract	L	N-S	E-W	IMP
A03	A09	3NT	S 5 HQ	660		56
A05	A04	3NT	S 5 HQ	660		56
A06	A02	2Hx	E-1 S7	200		-139
A08	A01	2NT	S 4 SK	180		-142
A10	A07	3NT	S 4 HQ	630		41
B02	B05	3NT	S 4 SK	630		41
B03	B01	1Hx	E 1 S7		160	-222
B04	B08	3NT	S 5 HQ	660		56
B06	B07	3NT	N 5 H2	660		56
B09	B10	3NT	S 5 HQ	660		56
C03	C10	3NT	S 4 SK	630		41
C05	C08	3NT	S 5 HQ	660		56
C06	C04	3NT	S 4 SK	630		41
C07	C02	3Hx	W-2 CA	500		-21
C09	C01	3NT	S 4 SK	630		41
D03	D05	3NT	S 5 HQ	660		56
D04	D01	2Hx	N-1 S7		200	-226
D06	D02	3NT	S 4 SK	630		41
D08	D07	3NT	S 5 HQ	660		56
D10	D09	3NT	S 5 HQ	660		56

Board (27)

N-S	E-W	Contract	L	N-S	E-W	IMP
A03	A09	3Dx	W-3 CK	500		155
A05	A04	2Cx	E-2 D9	300		73
A06	A02	2S	S 4 DQ	170		11
A08	A01	2S	S 3 C8	140		-6
A10	A07	2S	S 3 C8	140		-6
B02	B05	2S	S 2 DQ	110		-26
B03	B01	2S	S 4 S4	170		11
B04	B08	2S	S 3 DK	140		-6
B06	B07	4S	S-2 DQ		100	-123
B09	B10	3NT	S 3 D5	400		115
C03	C10	2S	S 3 C8	140		-6
C05	C08	2S	S 3 DQ	140		-6
C06	C04	2S	S 3 DQ	140		-6
C07	C02	2S	N 3 C2	140		-6
C09	C01	2S	S 3 DQ	140		-6
D03	D05	1NT	S 2 D5	120		-24
D04	D01	3NT	S-2 D2		100	-123
D06	D02	2S	S 2 DQ	110		-26
D08	D07	2S	S 4 D3	170		11
D10	D09	2S	S 3 DQ	140		-6