

1

♠ AK10985
♥ A5
♦ 7
♣ AJ93

♠ Q
♥ K10943
♦ K9632
♣ Q8

W N E S

♠ J742
♥ QJ76
♦ AQ104
♣ 7

♠ 63
♥ 82
♦ J85
♣ K106542

Board (1) Av: NS=+310

N-S	E-W	Contract	L	N-S	E-W	IMP
1	2 4S	N 5 C7	450			4
2	1 2S	N 5 H3	200			-3
3	4 4H	W 4 D7		420		-12
4	3 4S	N 4 HQ	420			3

2

♠ 962
♥ KQJ764
♦ Q6
♣ J3

♠ AQJ103
♥ 5
♦ 43
♣ A10974

W N E S

♠ K874
♥ 1092
♦ KJ108
♣ Q2

♠ 5
♥ A83
♦ A9752
♣ K865

Board (2) Av: NS=-80

N-S	E-W	Contract	L	N-S	E-W	IMP
1	2 5H	N-2 S8	200			-3
2	1 4S	E 4 HK	420			-8
3	4 4S	W-1 HK	50			4
4	3 5Sx	E-1 DQ	100			5

3

♠ AQ108
♥ J8764
♦ 75
♣ Q3

♠ 9652
♥ AQ532
♦ 8
♣ 1087

W N E S

♠ 7
♥ 9
♦ AJ1043
♣ AKJ942

♠ KJ43
♥ K10
♦ KQ962
♣ 65

Board (3) Av: NS=-130

N-S	E-W	Contract	L	N-S	E-W	IMP
1	2 4C	E-1 S3	100			6
2	1 4C	E 4 C3	130			0
3	4 3C	E 4 DK	130			0
4	3 4C	E 4 HK	130			0

4

♠ Q75
♥ Q7
♦ J97643
♣ AQ

♠ A2
♥ A92
♦ 1052
♣ 96432

W N E S

♠ K1043
♥ J86
♦ K8
♣ J1085

♠ J986
♥ K10543
♦ AQ
♣ K7

Board (4) Av: NS=+620

N-S	E-W	Contract	L	N-S	E-W	IMP
1	2 3NT	N 3 CT	600			-1
2	1 3NT	N 4 S4	630			0
3	4 3NT	N-2 CJ		200		-13
4	3 3NT	S 4 C7	630			0

5

♠ 105
♥ AK3
♦ A1053
♣ AQ98

♠ A43
♥ J542
♦ 76
♣ KJ52

W N E S

♠ KJ96
♥ Q10976
♦ 942
♣ 6

♠ Q872
♥ 8
♦ KQJ8
♣ 10743

Board (5) Av: NS=+630

N-S	E-W	Contract	L	N-S	E-W	IMP
1	2 3NT	N 4 D2	630			0
2	1 3NT	N 4 H3	630			0
3	4 2NT	N 2 HT	120			-11
4	3 3NT	N 4 H7	630			0

6

♠ K3
♥ A9
♦ AJ972
♣ J1065

♠ A954
♥ 63
♦ 10543
♣ AQ3

W N E S

♠ 108762
♥ KQJ1052
♦ Q
♣ 7

♠ QJ
♥ 874
♦ K86
♣ K9842

Board (6) Av: NS=-410

N-S	E-W	Contract	L	N-S	E-W	IMP
1	2 4Cx	S-1 H6	100			7
2	1 4S	E 5 CJ	650			-6
3	4 3H	E 4 DK	170			6
4	3 4S	W 5 CJ	650			-6

7

♠ 106
♥ 10975
♦
♣ QJ109543

♠ Q5
♥ KJ863
♦ K87543
♣

W N E S

♠ A9
♥ Q4
♦ AQ9
♣ AK8762

♠ KJ87432
♥ A2
♦ J1062
♣

Board (7) Av: NS=+100

N-S	E-W	Contract	L	N-S	E-W	IMP
1	2 3Sx	N-2 D8	500			-12
2	1 6D	W-1 ST	100			0
3	4 6Dx	W-1 CQ	200			3
4	3 5D	E-1 ST	100			0

8

♠ A97432
♥ Q7
♦ J73
♣ J10

♠ 10862
♥ KQ52
♦ 85432
♣

W N E S

♠ K85
♥ 9543
♦ 10964
♣ A6

♠ QJ106
♥ AKJ
♦ A8
♣ KQ97

Board (8) Av: NS=+190

N-S	E-W	Contract	L	N-S	E-W	IMP
1	2 3NT	N-1 D9		50		-6
2	1 3NT	S 4 H3	430			6
3	4 4S	N 4 CA	420			6
4	3 6S	N-2 CA		100		-7

9

♠ 54
♥ A82
♦ A10
♣ AQ10754

♠ 1093
♥ K76
♦ 8762
♣ K86

W N E S

♠ AKQ8
♥ J1054
♦ QJ954
♣

♠ J762
♥ Q93
♦ K3
♣ J932

Board (9) Av: NS=-10

N-S	E-W	Contract	L	N-S	E-W	IMP
1	2 4D	W-1 S5	100			3
2	1 3NT	N 3 SK	400			9
3	4 3D	E 4 C3		130		-3
4	3 3D	W 3 S4		110		-3

10

♠ 1098
♥ A10
♦ A10975
♣ 874

♠ AQ54
♥ Q742
♦ 82
♣ QJ3

W N E S

♠ 732
♥ K965
♦ 643
♣ K52

♠ KJ6
♥ J83
♦ KQJ
♣ A1096

Board (10) Av: NS=-100

N-S	E-W	Contract	L	N-S	E-W	IMP
1	2 3NT	S-1 S4	100			0
2	1 3NT	S-1 H3	100			0
3	4 2D	S 3 D8	110			5
4	3 3NT	S-2 CQ	200			-3

11

♠ 85
♥ Q98
♦ K86
♣ 109762

♠ KQJ743
♥ 64
♦ QJ3
♣ J5

W N E S

♠ A96
♥ AK1075
♦ 97
♣ AK4

♠ 102
♥ J32
♦ A10542
♣ Q83

Board (11) Av: NS=-450

N-S	E-W	Contract	L	N-S	E-W	IMP
1	2 4S	W 5 D6	450			0
2	1 4S	W 5 D6	450			0
3	4 4S	E 7 C3	510			-2
4	3 4S	W 5 C2	450			0

12

♠ KQ954
♥ 94
♦ Q543
♣ 32

♠ 32
♥ K108
♦ J1086
♣ J987

W N E S

♠ AJ76
♥ AQ62
♦ A9
♣ AQ4

♠ 108
♥ J753
♦ K72
♣ K1065

Board (12) Av: NS=-420

N-S	E-W	Contract	L	N-S	E-W	IMP
1	2 3NT	E 4 H4	430			0
2	1 2NT	E 2 ST	120			7
3	4 3NT	E 3 C5	400			1
4	3 3NT	E 4 C5	430			0

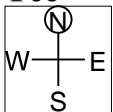
13

♠ 1052
♥ 92
♦ K109853
♣ J6

♠ 873
♥ J8654
♦ 76
♣ K95

♠ KQJ96
♥ AK
♦ AJ42
♣ 82

♠ A4
♥ Q1073
♦ Q
♣ AQ10743



Board (13) Av: NS=-160

N-S	E-W	Contract	L	N-S	E-W	IMP
1	2	2D	N-2 SK	200	-1	
2	1	2S	E 3 H3	140	1	
3	4	2S	E 2 DQ	110	2	
4	3	2S	E 4 DQ	170	0	

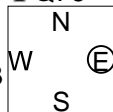
14

♠ AJ43
♥ Q8
♦ AK42
♣ Q76

♠ AK10
♥ QJ9853
♦ AJ102
♣ AJ102

♠ K10982
♥ 764
♦ 107
♣ K94

♠ Q765
♥ J9532
♦ 6
♣ 853



Board (14) Av: NS=-290

N-S	E-W	Contract	L	N-S	E-W	IMP
1	2	3H	S-3 DQ	150	4	
2	1	3NT	W 4 DA	430	-4	
3	4	3H	S-3 DQ	150	4	
4	3	4Sx	N-4 DT	800	-11	

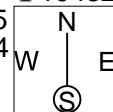
15

♠ A1063
♥ 2
♦ K542
♣ 10432

♠ KJ975
♥ A8754
♦ J10
♣ 8

♠ Q4
♥ KQ
♦ Q763
♣ AK975

♠ 82
♥ J10963
♦ A98
♣ QJ6



Board (15) Av: NS=+100

N-S	E-W	Contract	L	N-S	E-W	IMP
1	2	4H	W-2 D4	100	0	
2	1	3NT	W-2 D4	100	0	
3	4	3NT	W-2 D2	100	0	
4	3	3NT	E-1 H3	50	-2	

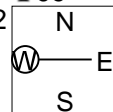
16

♠ 84
♥ AQ1075
♦ 6432
♣ J9

♠ K532
♥ 842
♦ Q75
♣ 532

♠ AJ1076
♥ J
♦ 8
♣ AKQ1076

♠ Q9
♥ K963
♦ AKJ109
♣ 84



Board (16) Av: NS=-590

N-S	E-W	Contract	L	N-S	E-W	IMP
1	2	4S	W 6 S4	680	-3	
2	1	5Hx	N-3 CA	500	3	
3	4	4S	E 6 DA	680	-3	
4	3	5Dx	S-3 C2	500	3	