

21st NEC CUP Qualifying Round 2 Tuesday, February 07, 2017

17

♠73
♥Q1065
♦10743
♣Q102

♠A98642
♥984
♦A8
♣76

♠KJ2
♥KQJ965
♦KJ94

♠KQJ105
♥A73
♦2
♣A853

W E
S

Board (17) Av: NS=-130

| N-S | E-W | Contract | L | N-S | E-W | IMP |
|-----|-----|----------|--------|-----|-----|-----|
| 1 | 8 | 2C | E-1 SK | 50 | | 5 |
| 8 | 1 | 3H | N-2 DK | | 100 | 1 |
| 2 | 25 | 2D | E 4 S5 | | 130 | 0 |
| 25 | 2 | 3D | E 4 SK | | 130 | 0 |
| 3 | 29 | 3H | N-3 DK | | 150 | -1 |
| 29 | 3 | 3D | E 4 SK | | 130 | 0 |
| 4 | 33 | 2D | E 4 SK | | 130 | 0 |
| 33 | 4 | 2Sx | S-2 C7 | | 300 | -5 |
| 5 | 6 | 3NTx | E-1 SK | 100 | | 6 |
| 6 | 5 | 3Sx | N-4 D2 | | 800 | -12 |
| 7 | 9 | 1Sx | S-1 C7 | | 100 | 1 |
| 9 | 7 | 2D | E 4 SK | | 130 | 0 |
| 10 | 11 | 3D | E 4 SK | | 130 | 0 |
| 11 | 10 | 2H | N-1 DK | | 50 | 2 |
| 12 | 53 | 2D | E 4 SK | | 130 | 0 |
| 53 | 12 | 2D | E 4 SK | | 130 | 0 |
| 13 | 17 | 3D | E 5 SK | | 150 | -1 |
| 17 | 13 | 3C | S-4 DA | | 200 | -2 |
| 14 | 15 | 2C | E-1 SK | 50 | | 5 |
| 15 | 14 | 2S | S-2 C7 | | 100 | 1 |
| 16 | 43 | 2D | E 3 SK | | 110 | 1 |
| 43 | 16 | 3D | E 3 SK | | 110 | 1 |
| 18 | 23 | 4D | E 4 SK | | 130 | 0 |
| 23 | 18 | 3D | E 4 SK | | 130 | 0 |
| 19 | 24 | 3D | E 4 SK | | 130 | 0 |
| 24 | 19 | 3D | E 4 SK | | 130 | 0 |
| 20 | 40 | 2Sx | S-2 DA | | 300 | -5 |
| 40 | 20 | 2D | E 4 SK | | 130 | 0 |
| 22 | 52 | 3D | E 3 SK | | 110 | 1 |
| 52 | 22 | 3NT | W-1 H4 | 50 | | 5 |
| 26 | 34 | 2H | N-3 DK | | 150 | -1 |
| 34 | 26 | 3D | E 4 SK | | 130 | 0 |
| 27 | 30 | 1Sx | S-2 DA | | 300 | -5 |
| 30 | 27 | 2H | N-2 DK | | 100 | 1 |
| 28 | 35 | 2Sx | S-2 DA | | 300 | -5 |
| 35 | 28 | 2D | E 5 SQ | | 150 | -1 |
| 31 | 51 | 3D | E 4 SK | | 130 | 0 |
| 51 | 31 | 2D | E 4 SK | | 130 | 0 |
| 32 | 36 | 5D | E-1 SK | 50 | | 5 |
| 36 | 32 | 1NT | W 1 S7 | | 90 | 1 |
| 37 | 42 | 2C | S-1 DA | | 50 | 2 |
| 42 | 37 | 2D | E 4 SK | | 130 | 0 |
| 38 | 39 | 3D | E 4 SK | | 130 | 0 |
| 39 | 38 | 3D | E 4 D5 | | 130 | 0 |
| 41 | 48 | 2S | S-3 DA | | 150 | -1 |
| 48 | 41 | 2D | E 5 S5 | | 150 | -1 |
| 44 | 47 | 3NT | W-1 S7 | 50 | | 5 |
| 47 | 44 | 1S | S-1 DA | | 50 | 2 |
| 45 | 46 | 2NT | E 4 SK | | 180 | -2 |
| 46 | 45 | 1Sx | S-3 DA | | 500 | -9 |
| 49 | 50 | 2D | E 4 SK | | 130 | 0 |
| 50 | 49 | 2H | N-3 DK | | 150 | -1 |

18

♠A8654
♥AJ64
♦KQ
♣QJ

♠J9
♥K1083
♦J532
♣A92

♠Q107
♥Q95
♦A976
♣K54

♠K32
♥72
♦1084
♣108763

W N E
S

Board (18) Av: NS=+70

| N-S | E-W | Contract | L | N-S | E-W | IMP |
|-----|-----|----------|--------|-----|-----|-----|
| 1 | 8 | 1NT | W-1 S4 | 50 | | -1 |
| 8 | 1 | 2S | N 2 H5 | | 110 | 1 |
| 2 | 25 | 3S | N-1 C3 | | 100 | -5 |
| 25 | 2 | 1NT | W 1 S4 | | 90 | -4 |
| 3 | 29 | 1NT | W-1 S6 | 50 | | -1 |
| 29 | 3 | 3D | W-1 CQ | 50 | | -1 |
| 4 | 33 | 2S | N 2 H5 | 110 | | 1 |
| 33 | 4 | 1S | N 2 H5 | 110 | | 1 |
| 5 | 6 | 1NT | W-2 SK | 100 | | 1 |
| 6 | 5 | 2H | E-2 D2 | 100 | | 1 |
| 7 | 9 | 2S | N 2 H5 | 110 | | 1 |
| 9 | 7 | 3S | N-1 H5 | | 100 | -5 |
| 10 | 11 | 2S | N 2 H2 | 110 | | 1 |
| 11 | 10 | 2H | E 2 DK | | 110 | -5 |
| 12 | 53 | 2D | E 2 H7 | | 90 | -4 |
| 53 | 12 | 1S | N 2 H5 | 110 | | 1 |
| 13 | 17 | 1NT | N 2 D5 | 120 | | 2 |
| 17 | 13 | 2S | N 2 H5 | 110 | | 1 |
| 14 | 15 | 1NT | W-1 S5 | 50 | | -1 |
| 15 | 14 | 2S | N 2 H5 | 110 | | 1 |
| 16 | 43 | 1S | N 2 C4 | 110 | | 1 |
| 43 | 16 | 3S | N 3 H5 | 140 | | 2 |
| 18 | 23 | 1S | N 3 H7 | 140 | | 2 |
| 23 | 18 | 1S | N 2 H5 | 110 | | 1 |
| 19 | 24 | 1S | N 2 H5 | 110 | | 1 |
| 24 | 19 | 1S | N 2 H5 | 110 | | 1 |
| 20 | 40 | 2H | W-1 DK | 50 | | -1 |
| 40 | 20 | 1S | N 3 H5 | 140 | | 2 |
| 22 | 52 | 1S | N 3 C4 | 140 | | 2 |
| 52 | 22 | 3H | E-3 CQ | 150 | | 2 |
| 26 | 34 | 2S | N 2 H5 | 110 | | 1 |
| 34 | 26 | 1S | N 3 C4 | 140 | | 2 |
| 27 | 30 | 2S | N 4 H5 | 170 | | 3 |
| 30 | 27 | 1S | N 1 S6 | 80 | | 0 |
| 28 | 35 | 2S | N 2 H5 | 110 | | 1 |
| 35 | 28 | 1NT | E-1 S2 | 50 | | -1 |
| 31 | 51 | 3C | N-1 H5 | | 100 | -5 |
| 51 | 31 | 3S | N-1 DA | | 100 | -5 |
| 32 | 36 | 3S | N-1 C4 | | 100 | -5 |
| 36 | 32 | 1NT | E-1 S2 | 50 | | -1 |
| 37 | 42 | 1S | N 2 H5 | 110 | | 1 |
| 42 | 37 | 1S | N 2 H5 | 110 | | 1 |
| 38 | 39 | 3D | E-2 S2 | 100 | | 1 |
| 39 | 38 | 1S | N 2 H5 | 110 | | 1 |
| 41 | 48 | 1S | N 2 H5 | 110 | | 1 |
| 48 | 41 | 3S | N-1 DA | | 100 | -5 |
| 44 | 47 | 3S | N 3 C4 | 140 | | 2 |
| 47 | 44 | 1S | N 1 H6 | 80 | | 0 |
| 45 | 46 | 1S | N 2 D6 | 110 | | 1 |
| 46 | 45 | 2H | W-1 SA | 50 | | -1 |
| 49 | 50 | 1S | N 2 C4 | 110 | | 1 |
| 50 | 49 | 1S | N 2 H4 | 110 | | 1 |

19

♠10962
♥Q107
♦106
♣KQ52

♠KQ43
♥98653
♦K9
♣A7

♠AJ875
♥K4
♦2
♣J9864

♠AJ2
♥AQJ87543
♣103

W N E
S

Board (19) Av: NS=+200

| N-S | E-W | Contract | L | N-S | E-W | IMP |
|-----|-----|----------|--------|-----|-----|-----|
| 1 | 8 | 5Dx | S 5 SK | 550 | | 8 |
| 8 | 1 | 5Sx | E-1 DA | 200 | | 0 |
| 2 | 25 | 5Dx | S 5 SK | 550 | | 8 |
| 25 | 2 | 5Dx | S 5 SK | 550 | | 8 |
| 3 | 29 | 5D | S 5 SK | 400 | | 5 |
| 29 | 3 | 4D | S 5 SK | 150 | | -2 |
| 4 | 33 | 3D | S 5 SK | 150 | | -2 |
| 33 | 4 | 4D | S 5 SK | 150 | | -2 |
| 5 | 6 | 5Dx | N 5 SJ | 550 | | 8 |
| 6 | 5 | 4S | E 4 D2 | | 620 | -13 |
| 7 | 9 | 4S | E 4 DK | | 620 | -13 |
| 9 | 7 | 4S | E 4 DA | | 620 | -13 |
| 10 | 11 | 3D | S 5 H2 | 150 | | -2 |
| 11 | 10 | 5Dx | S 5 SK | 550 | | 8 |
| 12 | 53 | 3D | S 5 SK | 150 | | -2 |
| 53 | 12 | 5D | S 5 SK | 400 | | 5 |
| 13 | 17 | 5S | E-1 DA | 100 | | -3 |
| 17 | 13 | 5Dx | S 5 SK | 550 | | 8 |
| 14 | 15 | 4S | E 4 DA | | 620 | -13 |
| 15 | 14 | 5D | S 5 SK | 400 | | 5 |
| 16 | 43 | 5Dx | S 5 SK | 550 | | 8 |
| 43 | 16 | 5D | S 5 CA | 400 | | 5 |
| 18 | 23 | 5Dx | S 5 SK | 550 | | 8 |
| 23 | 18 | 3D | S 5 H9 | 150 | | -2 |
| 19 | 24 | 5D | S 5 SK | 400 | | 5 |
| 24 | 19 | 5S | E-3 DA | 300 | | 3 |
| 20 | 40 | 5Dx | S 5 SK | 550 | | 8 |
| 40 | 20 | 2D | S 5 H9 | 150 | | -2 |
| 22 | 52 | 3D | S 4 CA | 130 | | -2 |
| 52 | 22 | 3D | S 4 SK | 130 | | -2 |
| 26 | 34 | 5Dx | S 5 SK | 550 | | 8 |
| 34 | 26 | 5Dx | S 5 SK | 550 | | 8 |
| 27 | 30 | 6Dx | S-1 SK | | 100 | -7 |
| 30 | 27 | 3NT | N-3 HK | | 150 | -8 |
| 28 | 35 | 3D | S 5 H2 | 150 | | -2 |
| 35 | 28 | 5D | S 5 SK | 400 | | 5 |
| 31 | 51 | 4D | S 5 SK | 150 | | -2 |
| 51 | 31 | 4D | S 5 SK | 150 | | -2 |
| 32 | 36 | 3D | S 5 CA | 150 | | -2 |
| 36 | 32 | 5D | S 5 H9 | 400 | | 5 |
| 37 | 42 | 5Dx | S 5 SK | 550 | | 8 |
| 42 | 37 | 2D | S 5 H9 | 150 | | -2 |
| 38 | 39 | 3NT | S-2 H5 | | 100 | -7 |
| 39 | 38 | 2D | S 5 H3 | 150 | | -2 |
| 41 | 48 | 5D | S 5 SK | 400 | | 5 |
| 48 | 41 | 2D | S 5 H3 | 150 | | -2 |
| 44 | 47 | 4S | E-2 DA | 200 | | 0 |
| 47 | 44 | 3S | E 3 DA | | 140 | -8 |
| 45 | 46 | 3NT | S-3 H9 | | 150 | -8 |
| 46 | 45 | 5D | S 5 SK | 400 | | 5 |
| 49 | 50 | 5Dx | S-1 SK | | 100 | -7 |
| 50 | 49 | 5D | S-1 SK | | 50 | -6 |

21st NEC CUP Qualifying Round 2 Tuesday, February 07, 2017

20

♠ KQJ3
♥ 1043
♦ J107
♣ J53

♠ 964
♥ K975
♦ 65
♣ A962

N
W — E
S

♠ 85
♥ QJ8
♦ AK982
♣ KQ10

♠ A1072
♥ A62
♦ Q43
♣ 874

21

♠ AQ8
♥ 85
♦ Q762
♣ 10854

♠ 765
♥ 1043
♦ K985
♣ Q96

N
W — E
S

♠ 10432
♥ AKQJ762
♦ 4
♣ A

♠ KJ9
♥ 9
♦ AJ103
♣ KJ732

22

♠ 108654
♥ K5
♦ 9832
♣ 95

♠ AKQ9
♥ AJ42
♦ 54
♣ KQ6

N
W — E
S

♠ J3
♥ 963
♦ AQ1076
♣ J102

♠ 72
♥ Q1087
♦ KJ
♣ A8743

Board (20) Av: NS=-130

| N-S | E-W | Contract | L | N-S | E-W | IMP |
|-----|-----|----------|----|-----|-----|-----|
| 1 | 8 | 1NT E 3 | C7 | 150 | -1 | |
| 8 | 1 | 1NT E 2 | S2 | 120 | 0 | |
| 2 | 25 | 1NT E 3 | C8 | 150 | -1 | |
| 25 | 2 | 1NT E 3 | C8 | 150 | -1 | |
| 3 | 29 | 1NT E 2 | S2 | 120 | 0 | |
| 29 | 3 | 1NT E 2 | S2 | 120 | 0 | |
| 4 | 33 | 1NT E 2 | S2 | 120 | 0 | |
| 33 | 4 | 1NT E 2 | S2 | 120 | 0 | |
| 5 | 6 | 1NT E 2 | C8 | 120 | 0 | |
| 6 | 5 | 1NT E 5 | D2 | 210 | -2 | |
| 7 | 9 | 1NT E 3 | S2 | 150 | -1 | |
| 9 | 7 | 1NT E 2 | S2 | 120 | 0 | |
| 10 | 11 | 1NT E 2 | S2 | 120 | 0 | |
| 11 | 10 | 1NT E 5 | C8 | 210 | -2 | |
| 12 | 53 | 1NT E 2 | S2 | 120 | 0 | |
| 53 | 12 | 1NT E 2 | S2 | 120 | 0 | |
| 13 | 17 | 1NT E 3 | C8 | 150 | -1 | |
| 17 | 13 | 1NT E 2 | S2 | 120 | 0 | |
| 14 | 15 | 1NT E 2 | S2 | 120 | 0 | |
| 15 | 14 | 1NT E 2 | S2 | 120 | 0 | |
| 16 | 43 | 1NT E 2 | S2 | 120 | 0 | |
| 43 | 16 | 1NT E 2 | S2 | 120 | 0 | |
| 18 | 23 | 1NT E 2 | S2 | 120 | 0 | |
| 23 | 18 | 1NT E 2 | S2 | 120 | 0 | |
| 19 | 24 | 1NT E 2 | S2 | 120 | 0 | |
| 24 | 19 | 1NT E 3 | C7 | 150 | -1 | |
| 20 | 40 | 1NT E 2 | S2 | 120 | 0 | |
| 40 | 20 | 2D E 4 | C8 | 130 | 0 | |
| 22 | 52 | 1NT E 2 | S2 | 120 | 0 | |
| 52 | 22 | 1NT E 5 | S2 | 210 | -2 | |
| 26 | 34 | 1NT E 2 | S3 | 120 | 0 | |
| 34 | 26 | 1NT E 2 | S2 | 120 | 0 | |
| 27 | 30 | 1NT E 2 | S2 | 120 | 0 | |
| 30 | 27 | 1NT E 1 | S3 | 90 | 1 | |
| 28 | 35 | 1NT E 2 | S2 | 120 | 0 | |
| 35 | 28 | 1NT E 2 | S2 | 120 | 0 | |
| 31 | 51 | 1NT W 2 | S2 | 120 | 0 | |
| 51 | 31 | 1NT E 2 | S2 | 120 | 0 | |
| 32 | 36 | 1NT E 2 | S2 | 120 | 0 | |
| 36 | 32 | 1NT E 2 | S2 | 120 | 0 | |
| 37 | 42 | 1NT E 1 | S2 | 90 | 1 | |
| 42 | 37 | 1NT E 2 | S2 | 120 | 0 | |
| 38 | 39 | 1NT E 2 | S2 | 120 | 0 | |
| 39 | 38 | 1NT E 2 | S3 | 120 | 0 | |
| 41 | 48 | 1NT E 2 | C8 | 120 | 0 | |
| 48 | 41 | 1NT E 2 | S6 | 120 | 0 | |
| 44 | 47 | 1NT E 2 | C4 | 120 | 0 | |
| 47 | 44 | 1NT E 2 | H3 | 120 | 0 | |
| 45 | 46 | 1NT E 2 | S2 | 120 | 0 | |
| 46 | 45 | 1NT E 3 | S2 | 150 | -1 | |
| 49 | 50 | 1NT E 2 | S2 | 120 | 0 | |
| 50 | 49 | 1NT E 2 | S2 | 120 | 0 | |

Board (21) Av: NS=-60

| N-S | E-W | Contract | L | N-S | E-W | IMP |
|-----|-----|----------|----|-----|-----|-----|
| 1 | 8 | 4H E-1 | H9 | 50 | 3 | |
| 8 | 1 | 4Hx E-1 | H9 | 100 | 3 | |
| 2 | 25 | 4H E-1 | H9 | 50 | 3 | |
| 25 | 2 | 4H E-1 | H9 | 50 | 3 | |
| 3 | 29 | 4H E-1 | C2 | 50 | 3 | |
| 29 | 3 | 5C N-2 | HK | 200 | -4 | |
| 4 | 33 | 4H E 4 | C3 | 420 | -8 | |
| 33 | 4 | 5Hx E-2 | C2 | 300 | 8 | |
| 5 | 6 | 4H E-1 | H9 | 50 | 3 | |
| 6 | 5 | 4H E-1 | D2 | 50 | 3 | |
| 7 | 9 | 4H E-1 | C2 | 50 | 3 | |
| 9 | 7 | 4H E 4 | C2 | 420 | -8 | |
| 10 | 11 | 4H E-1 | H9 | 50 | 3 | |
| 11 | 10 | 4H E-1 | C2 | 50 | 3 | |
| 12 | 53 | 4H W-1 | D6 | 50 | 3 | |
| 53 | 12 | 4H E 4 | DA | 420 | -8 | |
| 13 | 17 | 5Hx E-2 | H9 | 300 | 8 | |
| 17 | 13 | 4H E 4 | C7 | 420 | -8 | |
| 14 | 15 | 4H E-1 | C2 | 50 | 3 | |
| 15 | 14 | 5Hx E-1 | H9 | 100 | 4 | |
| 16 | 43 | 4H E 4 | H9 | 420 | -8 | |
| 43 | 16 | 4Hx E-1 | H9 | 100 | 4 | |
| 18 | 23 | 1NT N-2 | HA | 200 | -4 | |
| 23 | 18 | 4H E 4 | C3 | 420 | -8 | |
| 19 | 24 | 4C S-1 | H4 | 100 | -1 | |
| 24 | 19 | 4H E-1 | H9 | 50 | 3 | |
| 20 | 40 | 4H E 4 | C2 | 420 | -8 | |
| 40 | 20 | 4H E-1 | H9 | 50 | 3 | |
| 22 | 52 | 4H E-1 | DA | 50 | 3 | |
| 52 | 22 | 4H E 4 | H9 | 420 | -8 | |
| 26 | 34 | 4H E-1 | C3 | 50 | 3 | |
| 34 | 26 | 4H E-1 | DJ | 50 | 3 | |
| 27 | 30 | 4H E-1 | C3 | 50 | 3 | |
| 30 | 27 | 4H E-1 | DA | 50 | 3 | |
| 28 | 35 | 4H E-1 | C2 | 50 | 3 | |
| 35 | 28 | 4H E-1 | C2 | 50 | 3 | |
| 31 | 51 | 4H E-1 | DJ | 50 | 3 | |
| 51 | 31 | 4H E-1 | H9 | 50 | 3 | |
| 32 | 36 | 4H E 4 | H9 | 420 | -8 | |
| 36 | 32 | 3C N 3 | HA | 110 | 5 | |
| 37 | 42 | 4H E 4 | C2 | 420 | -8 | |
| 42 | 37 | 5Hx E-2 | H9 | 300 | 8 | |
| 38 | 39 | 4H E-1 | C2 | 50 | 3 | |
| 39 | 38 | 4H E-1 | H9 | 50 | 3 | |
| 41 | 48 | 4H E 4 | C2 | 420 | -8 | |
| 48 | 41 | 4H E 4 | H8 | 420 | -8 | |
| 44 | 47 | 4H E-1 | C3 | 50 | 3 | |
| 47 | 44 | 4H E-1 | S9 | 50 | 3 | |
| 45 | 46 | 4H E 4 | C2 | 420 | -8 | |
| 46 | 45 | 4H E-1 | DA | 50 | 3 | |
| 49 | 50 | 4H E-1 | H9 | 50 | 3 | |
| 50 | 49 | 4H E-2 | C2 | 100 | 4 | |

Board (22) Av: NS=-210

| N-S | E-W | Contract | L | N-S | E-W | IMP |
|-----|-----|----------|----|-----|-----|-----|
| 1 | 8 | 3NT W 4 | S4 | 630 | -9 | |
| 8 | 1 | 3NT W 3 | S8 | 600 | -9 | |
| 2 | 25 | 3NT W-1 | S6 | 100 | 7 | |
| 25 | 2 | 3NT W-4 | HK | 400 | 12 | |
| 3 | 29 | 3NT W 3 | S3 | 600 | -9 | |
| 29 | 3 | 3NT W-1 | S8 | 100 | 7 | |
| 4 | 33 | 3NT W-1 | S8 | 100 | 7 | |
| 33 | 4 | 3NT W 3 | S5 | 600 | -9 | |
| 5 | 6 | 3NT W 4 | HK | 630 | -9 | |
| 6 | 5 | 3NT E 3 | D2 | 600 | -9 | |
| 7 | 9 | 3NT W 3 | HK | 600 | -9 | |
| 9 | 7 | 3NT W-2 | S4 | 200 | 9 | |
| 10 | 11 | 3NT W 4 | S5 | 630 | -9 | |
| 11 | 10 | 3NT W 3 | HK | 600 | -9 | |
| 12 | 53 | 3NT W-1 | S5 | 100 | 7 | |
| 53 | 12 | 3NT W 3 | C9 | 600 | -9 | |
| 13 | 17 | 3NT E-1 | C4 | 100 | 7 | |
| 17 | 13 | 3NT W-2 | S4 | 200 | 9 | |
| 14 | 15 | 3NT W 4 | S8 | 630 | -9 | |
| 15 | 14 | 3NT W 3 | S5 | 600 | -9 | |
| 16 | 43 | 3NT W 3 | S4 | 600 | -9 | |
| 43 | 16 | 3NT W-1 | S5 | 100 | 7 | |
| 18 | 23 | 3NT W 3 | S8 | 600 | -9 | |
| 23 | 18 | 3NT W 3 | S2 | 600 | -9 | |
| 19 | 24 | 3NT W-2 | S5 | 200 | 9 | |
| 24 | 19 | 2Sx N-2 | SJ | 300 | -3 | |
| 20 | 40 | 3NT W-1 | S8 | 100 | 7 | |
| 40 | 20 | 3NT W 3 | S5 | 600 | -9 | |
| 22 | 52 | 3NT W-1 | S5 | 100 | 7 | |
| 52 | 22 | 3NT W 3 | HK | 600 | -9 | |
| 26 | 34 | 3NT W-2 | S5 | 200 | 9 | |
| 34 | 26 | 3NT W-1 | S5 | 100 | 7 | |
| 27 | 30 | 3NT W-1 | S5 | 100 | 7 | |
| 30 | 27 | 3D W 4 | S2 | 130 | 2 | |
| 28 | 35 | 3NT W-1 | S5 | 100 | 7 | |
| 35 | 28 | 3NT W-3 | S5 | 300 | 11 | |
| 31 | 51 | 2S N-2 | CT | 100 | 3 | |
| 51 | 31 | 3NT W 3 | S5 | 600 | -9 | |
| 32 | 36 | 3NT W 4 | S5 | 630 | -9 | |
| 36 | 32 | 3NT W-2 | S5 | 200 | 9 | |
| 37 | 42 | 3NT E 3 | H7 | 600 | -9 | |
| 42 | 37 | 3NT W-1 | S5 | 100 | 7 | |
| 38 | 39 | 3NT W-1 | S3 | 100 | 7 | |
| 39 | 38 | 3NT W 3 | S5 | 600 | -9 | |
| 41 | 48 | 3NT W-2 | S4 | 200 | 9 | |
| 48 | 41 | 3NT E-1 | S7 | 100 | 7 | |
| 44 | 47 | 3NT W 3 | S6 | 600 | -9 | |
| 47 | 44 | 3NT W 3 | S5 | 600 | -9 | |
| 45 | 46 | 3NT W-2 | S5 | 200 | 9 | |
| 46 | 45 | 3NT W-2 | S5 | 200 | 9 | |
| 49 | 50 | 3NT W-2 | S5 | 200 | 9 | |
| 50 | 49 | 3NT W-1 | S4 | 100 | 7 | |

21st NEC CUP Qualifying Round 2 Tuesday, February 07, 2017

23

♠ J43
♥ K43
♦ K853
♣ A95

♠ A6
♥ J8
♦ Q1094
♣ KJ764

♠ 109872
♥ Q97
♦ A2
♣ 1083

♠ KQ5
♥ A10652
♦ J76
♣ Q2

N
W—E
S

24

♠ 3
♥ A1098653
♦ 654
♣ AJ

♠ 10652
♥ KQ
♦ 10832
♣ 532

♠ AK98
♥ 72
♦ QJ7
♣ K984

♠ QJ74
♥ J4
♦ AK9
♣ Q1076

N
W—E
S

25

♠ A3
♥ J95
♦ A10732
♣ 962

♠ K764
♥ 874
♦ Q84
♣ AK4

♠ 1052
♥ K10632
♦ 965
♣ 75

♠ QJ98
♥ AQ
♦ KJ
♣ QJ1083

N
W—E
S

Board (23) Av: NS=-30

Board (24) Av: NS=+340

Board (25) Av: NS=+370

| N-S | E-W | Contract | L | N-S | E-W | IMP | N-S | E-W | Contract | L | N-S | E-W | IMP | N-S | E-W | IMP | | | |
|-----|-----|----------|--------|-----|-----|-----|-----|-----|----------|--------|-----|-----|-----|-----|-----|-----|--------|-----|----|
| 1 | 8 | 2H | S 2 DT | 110 | | 4 | 1 | 8 | 3H | N 4 SA | 170 | | -5 | 1 | 8 | 3NT | S 5 D8 | 460 | 3 |
| 8 | 1 | 3H | S 3 DT | 140 | | 5 | 8 | 1 | 3NT | S 3 S6 | 400 | | 2 | 8 | 1 | 3NT | S 4 CA | 430 | 2 |
| 2 | 25 | 1NT | N 2 ST | 120 | | 4 | 2 | 25 | 4H | N 4 SA | 420 | | 2 | 2 | 25 | 3NT | S 4 S4 | 430 | 2 |
| 25 | 2 | 3H | S 3 C3 | 140 | | 5 | 25 | 2 | 3S | W-3 D9 | 150 | | -5 | 25 | 2 | 3NT | S 4 S4 | 430 | 2 |
| 3 | 29 | 2H | S 3 DT | 140 | | 5 | 3 | 29 | 3NT | S 4 S3 | 430 | | 3 | 3 | 29 | 3NT | S 5 CA | 460 | 3 |
| 29 | 3 | 1NT | N 2 S3 | 120 | | 4 | 29 | 3 | 4H | N 4 SA | 420 | | 2 | 29 | 3 | 3NT | S 4 S4 | 430 | 2 |
| 4 | 33 | 1NT | N 3 ST | 150 | | 5 | 4 | 33 | 3S | W-6 HA | 300 | | -1 | 4 | 33 | 3NT | N 3 H3 | 400 | 1 |
| 33 | 4 | 4H | S-2 SA | 200 | | -5 | 33 | 4 | 4H | N 4 SA | 420 | | 2 | 33 | 4 | 3NT | S 5 CA | 460 | 3 |
| 5 | 6 | 3C | E-1 SK | 100 | | 4 | 5 | 6 | 2H | N 4 SA | 170 | | -5 | 5 | 6 | 3NT | S 5 S4 | 460 | 3 |
| 6 | 5 | 3H | N-1 D2 | 100 | 100 | -2 | 6 | 5 | 4H | N 4 D2 | 420 | | 2 | 6 | 5 | 3NT | N 4 D2 | 430 | 2 |
| 7 | 9 | 3H | S-1 DT | 100 | 100 | -2 | 7 | 9 | 3H | N 4 SA | 170 | | -5 | 7 | 9 | 3NT | S 4 S4 | 430 | 2 |
| 9 | 7 | 3C | E-1 SK | 100 | | 4 | 9 | 7 | 4H | N 4 DQ | 420 | | 2 | 9 | 7 | 3NT | S 4 CA | 430 | 2 |
| 10 | 11 | 3H | S 3 D9 | 140 | | 5 | 10 | 11 | 4H | N 4 SA | 420 | | 2 | 10 | 11 | 3NT | S 4 CA | 430 | 2 |
| 11 | 10 | 1NT | N 3 ST | 150 | | 5 | 11 | 10 | 4H | N 4 SA | 420 | | 2 | 11 | 10 | 3NT | S 4 S4 | 430 | 2 |
| 12 | 53 | 2H | S 2 SA | 110 | | 4 | 12 | 53 | 4H | N 4 SA | 420 | | 2 | 12 | 53 | 1NT | S 4 S6 | 180 | -5 |
| 53 | 12 | 3H | S-1 SA | 100 | 100 | -2 | 53 | 12 | 4H | N 5 SA | 450 | | 3 | 53 | 12 | 3NT | S 4 S4 | 430 | 2 |
| 13 | 17 | 3H | S 4 HJ | 170 | | 5 | 13 | 17 | 3NT | S 4 S2 | 430 | | 3 | 13 | 17 | 3NT | S 4 S4 | 430 | 2 |
| 17 | 13 | 3H | S-2 HJ | 200 | 200 | -5 | 17 | 13 | 4Hx | N 4 SA | 590 | | 6 | 17 | 13 | 3NT | N 4 H3 | 430 | 2 |
| 14 | 15 | 1NT | N 1 ST | 90 | | 3 | 14 | 15 | 3NT | S 4 S2 | 430 | | 3 | 14 | 15 | 3NT | N 3 H3 | 400 | 1 |
| 15 | 14 | 2H | S 3 DT | 140 | | 5 | 15 | 14 | 4H | N 4 SA | 420 | | 2 | 15 | 14 | 3NT | S 4 S2 | 430 | 2 |
| 16 | 43 | 3H | S-2 C4 | 200 | 200 | -5 | 16 | 43 | 3H | N 4 SA | 170 | | -5 | 16 | 43 | 3NT | S-1 H8 | 50 | -9 |
| 43 | 16 | 3H | S-1 SA | 100 | 100 | -2 | 43 | 16 | 4H | N 4 SA | 420 | | 2 | 43 | 16 | 3NT | S 4 S4 | 430 | 2 |
| 18 | 23 | 3H | S-1 SA | 100 | 100 | -2 | 18 | 23 | 3S | E-4 HJ | 200 | | -4 | 18 | 23 | 3NT | S 4 S4 | 430 | 2 |
| 23 | 18 | 3H | S-2 SA | 200 | 200 | -5 | 23 | 18 | 4H | N 4 SA | 420 | | 2 | 23 | 18 | 3NT | S 3 S4 | 400 | 1 |
| 19 | 24 | 4H | S-3 SA | 300 | 300 | -7 | 19 | 24 | 4H | N 4 SA | 420 | | 2 | 19 | 24 | 3NT | S 4 S4 | 430 | 2 |
| 24 | 19 | 2H | S 2 D8 | 110 | 110 | 4 | 24 | 19 | 3S | W-6 HA | 300 | | -1 | 24 | 19 | 1NT | S 5 S2 | 210 | -4 |
| 20 | 40 | 3H | S-1 SA | 100 | 100 | -2 | 20 | 40 | 4H | N 4 SA | 420 | | 2 | 20 | 40 | 3NT | S 3 H8 | 400 | 1 |
| 40 | 20 | 3H | S-2 SA | 200 | 200 | -5 | 40 | 20 | 3S | W-3 CA | 150 | | -5 | 40 | 20 | 3NT | S 3 S4 | 400 | 1 |
| 22 | 52 | 4H | S-3 SA | 300 | 300 | -7 | 21 | 50 | 3H | N 4 SA | 170 | | -5 | 21 | 50 | 3NT | S 5 H7 | 460 | 3 |
| 52 | 22 | 3H | S 3 SA | 140 | 140 | 5 | 50 | 21 | 3S | W-5 HA | 250 | | -3 | 50 | 21 | 3NT | S 4 S4 | 430 | 2 |
| 26 | 34 | 3H | S 4 H6 | 170 | 170 | 5 | 22 | 52 | 2S | W-4 HA | 200 | | -4 | 22 | 52 | 3NT | S 3 CK | 400 | 1 |
| 34 | 26 | 3H | S-1 SA | 100 | 100 | -2 | 52 | 22 | 2H | N 4 SA | 170 | | -5 | 52 | 22 | 3NT | S 4 S5 | 430 | 2 |
| 27 | 30 | 4H | S-2 D4 | 200 | 200 | -5 | 26 | 34 | 3Sx | W-2 S3 | 300 | | -1 | 26 | 34 | 3NT | N-1 H3 | 50 | -9 |
| 30 | 27 | 3H | S-1 SA | 100 | 100 | -2 | 34 | 26 | 4H | N 4 SA | 420 | | 2 | 34 | 26 | 3NT | S 4 S4 | 430 | 2 |
| 28 | 35 | 1NT | N 3 ST | 150 | 150 | 5 | 27 | 30 | 3H | N 4 SA | 170 | | -5 | 27 | 30 | 3NT | N 4 H3 | 430 | 2 |
| 35 | 28 | 4H | S-2 H8 | 200 | 200 | -5 | 30 | 27 | 3S | W-6 HA | 300 | | -1 | 30 | 27 | 3NT | S 3 S3 | 400 | 1 |
| 31 | 51 | 3H | S-1 SA | 100 | 100 | -2 | 28 | 35 | 4H | N 4 DQ | 420 | | 2 | 28 | 35 | 3NT | S 5 CK | 460 | 3 |
| 51 | 31 | 4H | S-2 C6 | 200 | 200 | -5 | 35 | 28 | 4H | N 4 SA | 420 | | 2 | 35 | 28 | 3NT | S 4 S4 | 430 | 2 |
| 32 | 36 | 3H | S-2 SA | 200 | 200 | -5 | 31 | 51 | 3S | W-3 HA | 150 | | -5 | 31 | 51 | 3NT | S 4 S4 | 430 | 2 |
| 36 | 32 | 3H | S-1 SA | 100 | 100 | -2 | 51 | 31 | 4H | N 4 SA | 420 | | 2 | 51 | 31 | 3NT | S 5 H8 | 460 | 3 |
| 37 | 42 | 3H | S-1 C6 | 100 | 100 | -2 | 32 | 36 | 3Sx | W-3 HA | 500 | | 4 | 32 | 36 | 3NT | S 3 S4 | 400 | 1 |
| 42 | 37 | 3H | S 3 C4 | 140 | 140 | 5 | 36 | 32 | 2H | N 3 SA | 140 | | -5 | 36 | 32 | 3NT | S 4 S4 | 430 | 2 |
| 38 | 39 | 4H | S-2 SA | 200 | 200 | -5 | 37 | 42 | 4H | N 4 DQ | 420 | | 2 | 37 | 42 | 3NT | S 3 S4 | 400 | 1 |
| 39 | 38 | 3H | S-1 C4 | 100 | 100 | -2 | 42 | 37 | 3S | W-4 HA | 200 | | -4 | 42 | 37 | 3NT | S-1 S4 | 50 | -9 |
| 41 | 48 | 4H | S-1 HJ | 100 | 100 | -2 | 38 | 39 | 4H | N 4 SA | 420 | | 2 | 38 | 39 | 3NT | S 3 S5 | 400 | 1 |
| 48 | 41 | 3H | S 3 DT | 140 | 140 | 5 | 39 | 38 | 4H | N 5 SA | 450 | | 3 | 39 | 38 | 3NT | S-1 H8 | 50 | -9 |
| 44 | 47 | 3H | S-1 SA | 100 | 100 | -2 | 41 | 48 | 4H | N 4 SA | 420 | | 2 | 41 | 48 | 3NT | N 3 CK | 400 | 1 |
| 47 | 44 | 3H | S-1 SA | 100 | 100 | -2 | 48 | 41 | 3H | N 4 SK | 170 | | -5 | 48 | 41 | 3NT | S-1 H4 | 50 | -9 |
| 45 | 46 | 3H | S-2 SA | 200 | 200 | -5 | 44 | 47 | 4H | N 4 SA | 420 | | 2 | 44 | 47 | 3NT | S 4 H4 | 430 | 2 |
| 46 | 45 | 3H | S-1 SA | 100 | 100 | -2 | 47 | 44 | 4H | N 4 SK | 420 | | 2 | 47 | 44 | 3NT | S 3 S4 | 400 | 1 |
| 49 | 50 | 3H | S-2 SA | 200 | 200 | -5 | 45 | 46 | 4H | N 4 SA | 420 | | 2 | 45 | 46 | 3NT | S 4 S2 | 430 | 2 |
| 50 | 49 | 3H | S 3 C4 | 140 | 140 | 5 | 46 | 45 | 4H | N 4 SK | 420 | | 2 | 46 | 45 | 3NT | N-1 H3 | 50 | -9 |

26

♠ J86
♥ Q10
♦ 10765
♣ K854

♠ A32
♥ 8
♦ Q8432
♣ AQ97

♠ Q104
♥ KJ6532
♦ AK
♣ 102

♠ K975
♥ A974
♦ J9
♣ J63

N
W — E
S

27

♠ AQ105
♥ K2
♦ Q52
♣ J1065

♠ J73
♥ J98
♦ KJ106
♣ 932

♠ 94
♥ A107
♦ 98743
♣ KQ8

♠ K862
♥ Q6543
♦ A
♣ A74

N
W — E
S

28

♠ 103
♥ AJ42
♦ J9742
♣ Q9

♠ AKQ9
♥ 109853
♦ AQ85
♣

♠ 8642
♥ KQ
♦ 3
♣ AKJ763

♠ J75
♥ 76
♦ K106
♣ 108542

N
W — E
S

Board (26) Av: NS=-90

| N-S | E-W | Contract | L | N-S | E-W | IMP |
|-----|-----|----------|--------|-----|-----|-----|
| 1 | 8 | 2H | E 2 S5 | | 110 | -1 |
| 8 | 1 | 3NT | W 3 C4 | | 600 | -11 |
| 2 | 25 | 3NT | E 4 CJ | | 630 | -11 |
| 25 | 2 | 3NT | W 3 S6 | | 600 | -11 |
| 3 | 29 | 3NT | W-1 D7 | 100 | | 5 |
| 29 | 3 | 3NT | W-2 S8 | 200 | | 7 |
| 4 | 33 | 2NT | W 4 C4 | 180 | | -3 |
| 33 | 4 | 3NT | W-1 C4 | 100 | | 5 |
| 5 | 6 | 3NT | W-1 S6 | 100 | | 5 |
| 6 | 5 | 3NT | E 3 D2 | 600 | | -11 |
| 7 | 9 | 3NT | W-1 C5 | 100 | | 5 |
| 9 | 7 | 3NT | E-1 S5 | 100 | | 5 |
| 10 | 11 | 3NT | W 3 C3 | 600 | | -11 |
| 11 | 10 | 3NT | W 3 C2 | 600 | | -11 |
| 12 | 53 | 3NT | E 3 S5 | 600 | | -11 |
| 53 | 12 | 3NT | W-1 C4 | 100 | | 5 |
| 13 | 17 | 3NT | E-2 S5 | 200 | | 7 |
| 17 | 13 | 3NT | W 3 C4 | 600 | | -11 |
| 14 | 15 | 3NT | W-3 D7 | 300 | | 9 |
| 15 | 14 | 3NT | W 3 C4 | 600 | | -11 |
| 16 | 43 | 3NT | W-2 S8 | 200 | | 7 |
| 43 | 16 | 3NT | E-2 S5 | 200 | | 7 |
| 18 | 23 | 3NT | E-1 S3 | 100 | | 5 |
| 23 | 18 | 3NT | W-1 C4 | 100 | | 5 |
| 19 | 24 | 3NT | E 3 S5 | 600 | | -11 |
| 24 | 19 | 3NT | E-1 S5 | 100 | | 5 |
| 20 | 40 | 3NT | E-2 S5 | 200 | | 7 |
| 40 | 20 | 3NT | E-2 S5 | 200 | | 7 |
| 21 | 50 | 3NT | W 4 C4 | 630 | | -11 |
| 50 | 21 | 3NT | N-1 C3 | 100 | | 0 |
| 22 | 52 | 2NT | W 3 C4 | 150 | | -2 |
| 52 | 22 | 3NT | W-2 S6 | 200 | | 7 |
| 26 | 34 | 3NT | W-1 C4 | 100 | | 5 |
| 34 | 26 | 3NT | E 3 S5 | 600 | | -11 |
| 27 | 30 | 3NT | E-1 S5 | 100 | | 5 |
| 30 | 27 | 4H | E-2 S3 | 200 | | 7 |
| 28 | 35 | 4H | E-2 S7 | 200 | | 7 |
| 35 | 28 | 3NT | W-2 S6 | 200 | | 7 |
| 31 | 51 | 3NT | W 3 C4 | 600 | | -11 |
| 51 | 31 | 3NT | W-2 S6 | 200 | | 7 |
| 32 | 36 | 4H | E-1 C6 | 100 | | 5 |
| 36 | 32 | 3NT | E-1 S5 | 100 | | 5 |
| 37 | 42 | 3NT | W-2 S6 | 200 | | 7 |
| 42 | 37 | 4H | E-2 S5 | 200 | | 7 |
| 38 | 39 | 3NT | W 3 C4 | 600 | | -11 |
| 39 | 38 | 3NT | E-2 S5 | 200 | | 7 |
| 41 | 48 | 3NT | W-1 S6 | 100 | | 5 |
| 48 | 41 | 4H | E-1 DJ | 100 | | 5 |
| 44 | 47 | 3NT | W-1 C5 | 100 | | 5 |
| 47 | 44 | 3NT | W-1 S6 | 100 | | 5 |
| 45 | 46 | 3NT | W-1 S6 | 100 | | 5 |
| 46 | 45 | 3NT | W 3 C4 | 600 | | -11 |

Board (27) Av: NS=+440

| N-S | E-W | Contract | L | N-S | E-W | IMP |
|-----|-----|----------|--------|-----|-----|-----|
| 1 | 8 | 4S | N 4 CK | 420 | | -1 |
| 8 | 1 | 4S | N 5 CK | 450 | | 0 |
| 2 | 25 | 4S | S 5 DJ | 450 | | 0 |
| 25 | 2 | 4S | N 5 CK | 450 | | 0 |
| 3 | 29 | 4S | N 5 CK | 450 | | 0 |
| 29 | 3 | 4S | N 5 CK | 450 | | 0 |
| 4 | 33 | 4S | N 5 CK | 450 | | 0 |
| 33 | 4 | 4S | N 4 CK | 420 | | -1 |
| 5 | 6 | 4S | N 5 CK | 450 | | 0 |
| 6 | 5 | 4S | N 4 D2 | 420 | | -1 |
| 7 | 9 | 4S | N 5 CK | 450 | | 0 |
| 9 | 7 | 4S | N 5 CK | 450 | | 0 |
| 10 | 11 | 4S | N 5 CK | 450 | | 0 |
| 11 | 10 | 4S | N 4 CK | 420 | | -1 |
| 12 | 53 | 4S | N 5 D6 | 450 | | 0 |
| 53 | 12 | 4S | N 5 CK | 450 | | 0 |
| 13 | 17 | 4S | N 5 CK | 450 | | 0 |
| 17 | 13 | 4S | N 5 D3 | 450 | | 0 |
| 14 | 15 | 4S | N 4 CK | 420 | | -1 |
| 15 | 14 | 4S | N 5 CK | 450 | | 0 |
| 16 | 43 | 4S | N 5 CK | 450 | | 0 |
| 43 | 16 | 4S | N 5 S4 | 450 | | 0 |
| 18 | 23 | 4S | N 5 CK | 450 | | 0 |
| 23 | 18 | 4S | S 4 C9 | 420 | | -1 |
| 19 | 24 | 4S | N 5 CK | 450 | | 0 |
| 24 | 19 | 4S | N 4 S9 | 420 | | -1 |
| 20 | 40 | 4S | N 4 CK | 420 | | -1 |
| 40 | 20 | 4S | N 5 CK | 450 | | 0 |
| 21 | 50 | 4S | N 5 CK | 450 | | 0 |
| 50 | 21 | 4S | N 5 CK | 450 | | 0 |
| 22 | 52 | 4S | N 4 CK | 420 | | -1 |
| 52 | 22 | 4S | N 5 CK | 450 | | 0 |
| 26 | 34 | 4S | N 5 CK | 450 | | 0 |
| 34 | 26 | 4S | N 5 CK | 450 | | 0 |
| 27 | 30 | 4S | N 5 CK | 450 | | 0 |
| 30 | 27 | 4S | N 5 CK | 450 | | 0 |
| 28 | 35 | 4S | N 5 CK | 450 | | 0 |
| 35 | 28 | 4S | N 4 CK | 420 | | -1 |
| 31 | 51 | 3NT | N 4 D4 | 430 | | 0 |
| 51 | 31 | 4S | N 4 CK | 420 | | -1 |
| 32 | 36 | 4S | S 4 CK | 420 | | -1 |
| 36 | 32 | 4S | N 5 CK | 450 | | 0 |
| 37 | 42 | 4S | N 5 CK | 450 | | 0 |
| 42 | 37 | 4S | N 5 CK | 450 | | 0 |
| 38 | 39 | 4S | N 5 CK | 450 | | 0 |
| 39 | 38 | 4S | N 5 S9 | 450 | | 0 |
| 41 | 48 | 4S | N 5 CK | 450 | | 0 |
| 48 | 41 | 4S | N 4 CK | 420 | | -1 |
| 44 | 47 | 4S | N 5 D3 | 450 | | 0 |
| 47 | 44 | 4S | N 5 CK | 450 | | 0 |
| 45 | 46 | 4S | N 4 CK | 420 | | -1 |
| 46 | 45 | 4S | N 5 CK | 450 | | 0 |

Board (28) Av: NS=-330

| N-S | E-W | Contract | L | N-S | E-W | IMP |
|-----|-----|----------|--------|-----|-----|-----|
| 1 | 8 | 3NT | E 4 D4 | 430 | | -3 |
| 8 | 1 | 3NT | W 4 ST | 430 | | -3 |
| 2 | 25 | 4S | W 5 D2 | 450 | | -3 |
| 25 | 2 | 3NT | W 5 ST | 460 | | -4 |
| 3 | 29 | 4S | E 6 H7 | 480 | | -4 |
| 29 | 3 | 4S | E 6 H7 | 480 | | -4 |
| 4 | 33 | 6S | W-1 D3 | 50 | | 9 |
| 33 | 4 | 3NT | W 4 D4 | 430 | | -3 |
| 5 | 6 | 4S | W 6 D2 | 480 | | -4 |
| 6 | 5 | 3NT | E 4 D2 | 430 | | -3 |
| 7 | 9 | 4S | W 5 D3 | 450 | | -3 |
| 9 | 7 | 3NT | W 4 D5 | 430 | | -3 |
| 10 | 11 | 5S | W 6 C9 | 480 | | -4 |
| 11 | 10 | 3NT | E 4 H7 | 430 | | -3 |
| 12 | 53 | 4S | W 6 D2 | 480 | | -4 |
| 53 | 12 | 6H | W-1 D2 | 50 | | 9 |
| 13 | 17 | 6S | W-1 S4 | 50 | | 9 |
| 17 | 13 | 6S | E 6 H7 | 980 | | -12 |
| 14 | 15 | 3NT | W 4 ST | 430 | | -3 |
| 15 | 14 | 4S | E 6 H7 | 480 | | -4 |
| 16 | 43 | 3NT | W 5 ST | 460 | | -4 |
| 43 | 16 | 6S | W-1 D2 | 50 | | 9 |
| 18 | 23 | 6S | E-1 C4 | 50 | | 9 |
| 23 | 18 | 6S | W-1 S3 | 50 | | 9 |
| 19 | 24 | 4S | W 6 D2 | 480 | | -4 |
| 24 | 19 | 5S | W 6 D2 | 480 | | -4 |
| 20 | 40 | 4S | E 4 D6 | 420 | | -3 |
| 40 | 20 | 6S | W-1 ST | 50 | | 9 |
| 21 | 50 | 3NT | W 4 D4 | 430 | | -3 |
| 50 | 21 | 4S | W 5 S3 | 450 | | -3 |
| 22 | 52 | 4S | E 6 H7 | 480 | | -4 |
| 52 | 22 | 5S | W-1 D2 | 50 | | 9 |
| 26 | 34 | 4S | W 5 D2 | 450 | | -3 |
| 34 | 26 | 5S | E 6 S5 | 480 | | -4 |
| 27 | 30 | 5S | W 5 D4 | 450 | | -3 |
| 30 | 27 | 6S | E-2 D3 | 100 | | 10 |
| 28 | 35 | 4S | E 6 H7 | 480 | | -4 |
| 35 | 28 | 4S | E 6 S5 | 480 | | -4 |
| 31 | 51 | 4S | W 5 D4 | 450 | | -3 |
| 51 | 31 | 3NT | W 4 ST | 430 | | -3 |
| 32 | 36 | 4S | E 5 C4 | 450 | | -3 |
| 36 | 32 | 4H | W 4 ST | 420 | | -3 |
| 37 | 42 | 6S | W-1 D2 | 50 | | 9 |
| 42 | 37 | 4S | E 4 H7 | 420 | | -3 |
| 38 | 39 | 3NT | W-1 D5 | 50 | | 9 |
| 39 | 38 | 4S | E 6 S5 | 480 | | -4 |
| 41 | 48 | 4S | E 5 C2 | 450 | | -3 |
| 48 | 41 | 4H | W 5 ST | 450 | | -3 |
| 44 | 47 | 3NT | E 4 S5 | 430 | | -3 |
| 47 | 44 | 6S | W-3 S3 | 150 | | 10 |
| 45 | 46 | 3NT | W-2 D4 | 100 | | 10 |
| 46 | 45 | 4S | E 5 DK | 450 | | -3 |

29

♠ J74
♥ AK82
♦ AJ10
♣ 987

♠ Q1052
♥ 109763
♦ Q5
♣ 62

♠ A63
♥ 4
♦ K862
♣ AKQJ3

♠ K98
♥ QJ5
♦ 9743
♣ 1054

30

♠ K107
♥ J62
♦ 96
♣ 109876

♠ A85
♥ A10953
♦ 53
♣ A43

♠ J42
♥ Q4
♦ Q10874
♣ KJ2

♠ Q963
♥ K87
♦ AKJ2
♣ Q5

38

♠ AJ72
♥ 85
♦ K1092
♣ K64

♠ 986
♥ QJ3
♦ A86
♣ J1072

♠ KQ1053
♥ A109
♦ Q4
♣ AQ3

♠ 4
♥ K7642
♦ J753
♣ 985

Board (29) Av: NS=0

| N-S | E-W | Contract | L | N-S | E-W | IMP |
|-----|-----|----------|-----|-----|-----|-----|
| 1 | 8 | 3C | E-2 | C5 | 200 | 5 |
| 8 | 1 | 1NT | N-1 | CK | 100 | -3 |
| 2 | 25 | 2S | E 4 | D5 | 170 | -5 |
| 25 | 2 | 2S | E 3 | S8 | 140 | -4 |
| 3 | 29 | 2C | E 2 | HQ | 90 | -3 |
| 29 | 3 | 2H | W-1 | C7 | 100 | 3 |
| 4 | 33 | 2H | E-1 | C4 | 100 | 3 |
| 33 | 4 | 2H | E-1 | C4 | 100 | 3 |
| 5 | 6 | 1NTxN-1 | CA | | 200 | -5 |
| 6 | 5 | 3C | E 3 | D2 | 110 | -3 |
| 7 | 9 | 2H | W-1 | C7 | 100 | 3 |
| 9 | 7 | 2C | E 2 | HQ | 90 | -3 |
| 10 | 11 | 1NTxN-2 | CA | | 500 | -11 |
| 11 | 10 | 1NT | S-1 | HT | 100 | -3 |
| 12 | 53 | 3C | E-1 | HQ | 100 | 3 |
| 53 | 12 | 2H | E-2 | C4 | 200 | 5 |
| 13 | 17 | 2H | E-1 | D4 | 100 | 3 |
| 17 | 13 | 2C | E 2 | HQ | 90 | -3 |
| 14 | 15 | 3C | E-2 | HQ | 200 | 5 |
| 15 | 14 | 2S | E 2 | S8 | 110 | -3 |
| 16 | 43 | 2H | W-1 | C9 | 100 | 3 |
| 43 | 16 | 4H | W-4 | DA | 400 | 9 |
| 18 | 23 | 1NT | E 2 | C5 | 120 | -3 |
| 23 | 18 | 3C | E 3 | D7 | 110 | -3 |
| 19 | 24 | 1NT | S-1 | H6 | 100 | -3 |
| 24 | 19 | 2NT | E-1 | D7 | 100 | 3 |
| 20 | 40 | 2NT | E-1 | D7 | 100 | 3 |
| 40 | 20 | 2C | E 3 | HQ | 110 | -3 |
| 21 | 50 | 2H | E-2 | D7 | 200 | 5 |
| 50 | 21 | 2H | E-1 | C3 | 100 | 3 |
| 22 | 52 | 2H | W-1 | C9 | 100 | 3 |
| 52 | 22 | 1NT | S-1 | H3 | 100 | -3 |
| 26 | 34 | 1NT | E 1 | S3 | 90 | -3 |
| 34 | 26 | 2S | E 3 | C4 | 140 | -4 |
| 27 | 30 | 2H | E-1 | C5 | 100 | 3 |
| 30 | 27 | 1NT | S-1 | S2 | 100 | -3 |
| 28 | 35 | 2H | E-1 | D4 | 100 | 3 |
| 35 | 28 | 1NT | N-2 | CJ | 200 | -5 |
| 31 | 51 | 2H | E-2 | C5 | 200 | 5 |
| 51 | 31 | 2NT | E-1 | D3 | 100 | 3 |
| 32 | 36 | 2H | E-1 | S8 | 100 | 3 |
| 36 | 32 | 1NT | E 1 | C4 | 90 | -3 |
| 37 | 42 | 1NT | N-1 | CA | 100 | -3 |
| 42 | 37 | 1NT | N-1 | CA | 100 | -3 |
| 38 | 39 | 2H | E-1 | C4 | 100 | 3 |
| 39 | 38 | 1C | N-1 | CJ | 100 | -3 |
| 41 | 48 | 1NT | N-1 | CA | 100 | -3 |
| 48 | 41 | 3NT | E-3 | C5 | 300 | 7 |
| 44 | 47 | 2H | E-1 | C4 | 100 | 3 |
| 47 | 44 | 1NT | S-1 | HT | 100 | -3 |
| 45 | 46 | 1NT | N-2 | CA | 200 | -5 |
| 46 | 45 | 2H | E 2 | C6 | 110 | -3 |

Board (30) Av: NS=-20

| N-S | E-W | Contract | L | N-S | E-W | IMP |
|-----|-----|----------|-----|-----|-----|-----|
| 1 | 8 | 1NT | S-1 | HT | 50 | -1 |
| 8 | 1 | 1NT | S-2 | H5 | 100 | -2 |
| 2 | 25 | 1NT | S 1 | H5 | 90 | 3 |
| 25 | 2 | 1NT | S-2 | H5 | 100 | -2 |
| 3 | 29 | 1NT | E 2 | DA | 120 | -3 |
| 29 | 3 | 1NT | S 1 | H3 | 90 | 3 |
| 4 | 33 | 1NT | S 1 | HT | 90 | 3 |
| 33 | 4 | 1NT | S-3 | HT | 150 | -4 |
| 5 | 6 | 1NT | S 1 | H5 | 90 | 3 |
| 6 | 5 | 1NT | N 1 | D2 | 90 | 3 |
| 7 | 9 | 1NT | S-2 | H5 | 100 | -2 |
| 9 | 7 | 1NT | S-3 | H5 | 150 | -4 |
| 10 | 11 | 1NT | S-2 | H9 | 100 | -2 |
| 11 | 10 | 1NT | S-1 | H5 | 50 | -1 |
| 12 | 53 | 1NT | N 1 | H5 | 90 | 3 |
| 53 | 12 | 1NT | S-1 | H5 | 50 | -1 |
| 13 | 17 | 1NT | S-2 | H4 | 100 | -2 |
| 17 | 13 | 1NT | S-2 | H5 | 100 | -2 |
| 14 | 15 | 1NT | S 1 | H3 | 90 | 3 |
| 15 | 14 | 1NT | S-1 | H6 | 50 | -1 |
| 16 | 43 | 1NT | S-3 | HT | 150 | -4 |
| 43 | 16 | 1NT | S 1 | H5 | 90 | 3 |
| 18 | 23 | 1NT | S 1 | H5 | 90 | 3 |
| 23 | 18 | 1NT | S-2 | HT | 100 | -2 |
| 19 | 24 | 1NT | S-1 | H5 | 50 | -1 |
| 24 | 19 | 1NT | S 2 | H5 | 120 | 4 |
| 20 | 40 | 1NT | S-1 | H5 | 50 | -1 |
| 40 | 20 | 1NT | S 1 | H5 | 90 | 3 |
| 21 | 50 | 1NT | S-2 | HT | 100 | -2 |
| 50 | 21 | 1NT | S-2 | HT | 100 | -2 |
| 22 | 52 | 1NT | S-1 | H9 | 50 | -1 |
| 52 | 22 | 1NT | S-1 | H4 | 50 | -1 |
| 26 | 34 | 2S | S 3 | D5 | 140 | 4 |
| 34 | 26 | 1NT | S 2 | H5 | 120 | 4 |
| 27 | 30 | 1NT | S-1 | HT | 50 | -1 |
| 30 | 27 | 1NT | S-1 | HT | 50 | -1 |
| 28 | 35 | 1NT | S-3 | HT | 150 | -4 |
| 35 | 28 | 1NT | S-1 | H5 | 50 | -1 |
| 31 | 51 | 1NT | S-1 | H5 | 50 | -1 |
| 51 | 31 | 1NT | S 1 | | 90 | 3 |
| 32 | 36 | 1NT | S-2 | H5 | 100 | -2 |
| 36 | 32 | 1NT | S 1 | H5 | 90 | 3 |
| 37 | 42 | 1NT | S 1 | H5 | 90 | 3 |
| 42 | 37 | 1NT | S-1 | H5 | 50 | -1 |
| 38 | 39 | 1NT | S-1 | H5 | 50 | -1 |
| 39 | 38 | 1NT | S-1 | HT | 50 | -1 |
| 41 | 48 | 1NT | S-2 | H5 | 100 | -2 |
| 48 | 41 | 1NTxS | 1 | H3 | 180 | 5 |
| 44 | 47 | 1NT | S 1 | H3 | 90 | 3 |
| 47 | 44 | 1NT | S-2 | HT | 100 | -2 |
| 45 | 46 | 1NT | S-2 | H5 | 100 | -2 |
| 46 | 45 | 1NT | S-1 | H6 | 50 | -1 |

Board (38)

| N-S | E-W | Contract | L | N-S | E-W | IMP |
|-----|-----|----------|-----|-----|-----|-----|
| 21 | 49 | 3NT | E 3 | H4 | 600 | |
| 49 | 21 | 4S | E 4 | C6 | 620 | |

39

♠ KQJ76
♥ AJ7
♦ K62
♣ K9

| | | | |
|---|---|--|---|
| N | | | |
| W | | | E |
| | S | | |

♠ A843
♥ 10953
♦ Q5
♣ J103

♠ 10952
♥ 2
♦ AJ874
♣ AQ5

♠ KQ864
♥ 1093
♦ 87642

40

♠ K63
♥ 105
♦ Q2
♣ K97652

| | | | |
|---|---|--|---|
| N | | | |
| W | | | E |
| | S | | |

♠ QJ94
♥ 843
♦ 975
♣ AJ4

♠ A1082
♥ AKJ962
♦ 43
♣ Q

♠ 75
♥ Q7
♦ AKJ1086
♣ 1083

41

♠ 865
♥ QJ653
♦ KQ
♣ AJ2

| | | | |
|---|---|--|---|
| N | | | |
| W | | | E |
| | S | | |

♠ 4
♥ 10842
♦ 10952
♣ Q865

♠ AQ10972
♥ AK9
♦ A8
♣ 94

♠ KJ3
♥ 7
♦ J7643
♣ K1073

Board (39)

| N-S | E-W | Contract | L | N-S | E-W |
|-----|-----|----------|--------|-----|-----|
| 21 | 49 | 4S | N 6 CJ | 680 | |
| 49 | 21 | 4S | N 6 HT | 680 | |

IMP

Board (40)

| N-S | E-W | Contract | L | N-S | E-W |
|-----|-----|----------|--------|-----|-----|
| 21 | 49 | 2H | S 4 DK | 170 | |
| 49 | 21 | 3H | S 3 DK | 140 | |

IMP

Board (41)

| N-S | E-W | Contract | L | N-S | E-W |
|-----|-----|----------|--------|-----|-----|
| 21 | 49 | 6H | N-3 C6 | 150 | |
| 49 | 21 | 6S | S-1 H7 | 50 | |

IMP

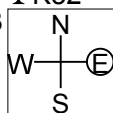
21st NEC CUP Qualifying Round 2 Tuesday, February 07, 2017

42

♠ 6
♥ AK86
♦ J10853
♣ K52

♠ 109
♥ Q10752
♦ AQ6
♣ Q93

♠ AKJ752
♥ 4
♦ K4
♣ A1076



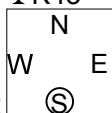
♠ Q843
♥ J93
♦ 972
♣ J84

43

♠ A10876
♥ Q4
♦ KQ4
♣ K43

♠ Q92
♥ J8
♦ 1063
♣ AQJ75

♠ 5
♥ 107632
♦ AJ9852
♣ 9



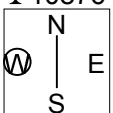
♠ KJ43
♥ AK95
♦ 7
♣ 10862

44

♠ AK102
♥ J7
♦ Q65
♣ 10876

♠ J94
♥ A1065
♦ J102
♣ KJ3

♠ 75
♥ KQ93
♦ K93
♣ A952



♠ Q863
♥ 842
♦ A874
♣ Q4

Board (42)

| N-S | E-W | Contract | L | N-S | E-W |
|-----|-----|----------|--------|-----|-----|
| 21 | 49 | 3NT | N-2 H5 | | 200 |
| 49 | 21 | 3NT | N 5 ST | 660 | |

IMP

Board (43)

| N-S | E-W | Contract | L | N-S | E-W |
|-----|-----|----------|--------|-----|-----|
| 21 | 49 | 3NT | W-3 DK | 150 | |
| 49 | 21 | 3C | E 4 S5 | | 130 |

IMP

Board (44)

| N-S | E-W | Contract | L | N-S | E-W |
|-----|-----|----------|--------|-----|-----|
| 21 | 49 | 1NT | S 1 D4 | 90 | |
| 49 | 21 | Passout | | | |

IMP