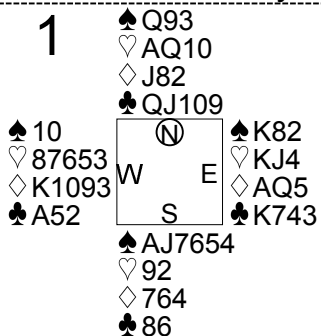
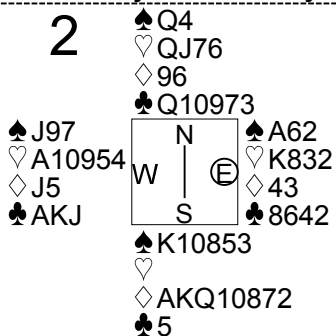


21st NEC CUP Qualifying Round 3 Tuesday, February 07, 2017

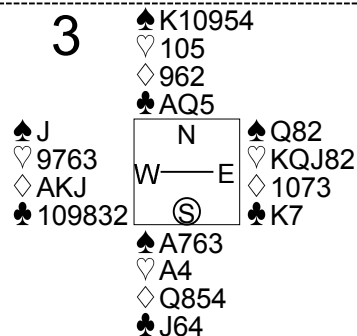
1



2



3



Board (1) Av: NS=-140

N-S	E-W	Contract	L	N-S	E-W	IMP
1	53	2S	S-1 H3		50	3
53	1	4Sx	S-4 H8		800	-12
2	5	3D	W-1 CQ	50		5
5	2	4H	W 4 CQ		420	-7
3	51	2S	S 2 ST	110		6
51	3	3NT	E-4 S6	200		8
4	29	3NT	E-2 S6	100		6
29	4	4H	W 4 CQ		420	-7
6	38	4Hx	E 4 D2		590	-10
38	6	4H	W 4 C9		420	-7
7	33	2NT	E 2 S4		120	1
33	7	4H	E-1 C8	50		5
8	44	4H	W 4 CQ		420	-7
44	8	3NT	W 3 S7		400	-6
9	11	3H	W 4 CQ		170	-1
11	9	2NT	E 2 S6		120	1
10	24	4H	W 4 CQ		420	-7
24	10	3NTx	E 3 S5		550	-9
12	14	4H	W 5 S3		450	-7
14	12	2NT	E 2 S6		120	1
13	26	2NT	W-1 S6	50		5
26	13	3H	W 4 CQ		170	-1
15	20	2S	S 3 CA	140		7
20	15	2H	W 4 CQ		170	-1
16	21	3H	E 5 C8		200	-2
21	16	4H	E 5 SA		450	-7
17	32	2NT	E-1 S6	50		5
32	17	3S	S-3 CA		150	0
18	47	1NT	E-1 S4	50		5
47	18	2S	S-2 CA		100	1
19	45	3S	S-2 H3		100	1
45	19	2S	S-2 H8		100	1
22	49	2S	S-1 H3		50	3
49	22	4H	W 4 CQ		420	-7
23	46	3S	S-2 H8		100	1
46	23	2NT	E-1 C6	50		5
25	35	2NT	E-1 S2	50		5
35	25	4H	E-1 C8	50		5
27	50	2S	N 2 H4	110		6
50	27	2S	S-1 D3		50	3
28	36	2S	S-2 H8		100	1
36	28	4H	W 4 S3		420	-7
30	31	2S	S 2 CA	110		6
31	30	3H	E 4 C8		170	-1
34	43	4H	E-1 C8	50		5
43	34	2Sx	S-1 ST		100	1
37	41	3H	E 4 C8		170	-1
41	37	2NT	E-1 S7	50		5
40	52	2Sx	S-1 ST		100	1
52	40	3NT	E-2 S6	100		6
42	48	2H	E 4 C8		170	-1
48	42	3H	W 4 S6		170	-1

Board (2) Av: NS=+170

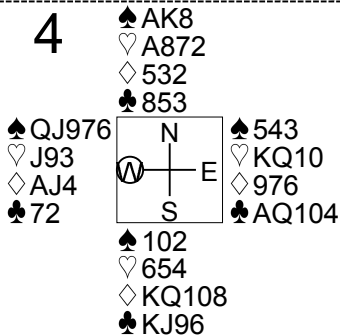
N-S	E-W	Contract	L	N-S	E-W	IMP
1	53	4S	E-1 C4	50		-3
53	1	2S	E 2 C5		110	-7
2	5	5Dx	S-1 CA		200	-9
5	2	3D	S 5 CK	150		-1
3	51	4S	S 4 CK	620		10
51	3	4D	S 4 CK	130		-1
4	29	Weighted				-7
29	4	4Hx	W-3 SQ	500		8
6	38	3D	N 4 D2	130		-1
38	6	4D	S 4 CA	130		-1
7	33	3NT	N-1 H2		100	-7
33	7	2S	S 5 S7	200		1
8	44	4Hx	W-3 D9	500		8
44	8	3NT	N-2 H2		200	-9
9	11	3D	S 4 CA	130		-1
11	9	4D	S 5 CK	150		-1
10	24	4Hx	W-3 D9	500		8
24	10	3Hx	W-1 D9	100		-2
12	14	4S	S-3 CA		300	-10
14	12	4D	S 4 CA	130		-1
13	26	4D	S 4 CA	130		-1
26	13	3NT	N-1 H2		100	-7
15	20	4D	S 4 CA	130		-1
20	15	4S	S-1 CA		100	-7
16	21	3NT	N-1 H2		100	-7
21	16	5Dx	S 5 HA	750		11
17	32	3NT	N 4 C8	630		10
32	17	5D	S 5 CA	600		10
18	47	3NT	N 4 H3	630		10
47	18	3D	S 5 CA	150		-1
19	45	5D	S 5 CK	600		10
45	19	5D	S-1 CA		100	-7
22	49	3S	S-3 CK		300	-10
49	22	5D	S 5 CK	600		10
23	46	5D	S-1 CA		100	-7
46	23	3NT	N-1 H2		100	-7
25	35	4S	S-1 CA		100	-7
35	25	3NT	N 3 H3	600		10
27	50	3D	S 5 CA	150		-1
50	27	5D	S 5 CA	600		10
28	36	3NT	N-1 H2		100	-7
36	28	4S	S-3 CA		300	-10
30	31	5D	S 5 CA	600		10
31	30	4Sx	S-2 CA		500	-12
34	43	4Hx	W-3 D9	500		8
43	34	3NT	N 4 H2	630		10
37	41	5D	S 5 CK	600		10
41	37	4S	S-1 CA		100	-7
40	52	5D	S 5 CK	600		10
52	40	3NT	N-1 H2		100	-7
42	48	4D	S 4 CA	130		-1
48	42	3S	S-1 CK		100	-7

Board (3) Av: NS=-80

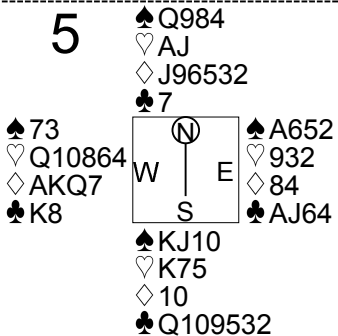
N-S	E-W	Contract	L	N-S	E-W	IMP
1	53	2S	N 2 HK	110		5
53	1	4H	E 4 SA		620	-11
2	5	3S	S-1 DA		50	1
5	2	2S	S 2 DA	110		5
3	51	2S	N-1 HQ		50	1
51	3	2S	N 2 HK	110		5
4	29	3S	N-1 HK		50	1
29	4	2S	N-1 HK		50	1
6	38	Passout				2
38	6	4Sx	N-3 HK		500	-9
7	33	3S	N-1 HK		50	1
33	7	3S	N-1 HK		50	1
8	44	2S	N 2 HK	110		5
44	8	2NT	W-1 ST	100		5
9	11	3S	N-2 HK		100	-1
11	9	3S	N-2 HK		100	-1
10	24	2S	N-1 HK		50	1
24	10	2S	N-1 HK		50	1
12	14	4S	N-3 HK		150	-2
14	12	3S	N-2 HK		100	-1
13	26	4H	E 4 HA		620	-11
26	13	5Hx	E-2 SA	500		11
15	20	3S	N-2 HK		100	-1
20	15	2S	N-1 HK		50	1
16	21	3S	N 3 HK	140		6
21	16	3S	N-2 HK		100	-1
17	32	3S	N 3 HK	140		6
32	17	Passout				2
18	47	3D	S-2 CT		100	-1
47	18	3S	N 3 HK	140		6
19	45	3S	N-1 HK		50	1
45	19	4H	E 4 SA		620	-11
22	49	3H	E 4 S6		170	-3
49	22	2S	N-1 HK		50	1
23	46	4Sx	N-3 HK		500	-9
46	23	3S	N-1 HK		50	1
25	35	3S	N-2 HK		100	-1
35	25	2S	N-1 HK		50	1
27	50	2S	N 3 HK	140		6
50	27	Passout				2
28	36	2S	N 2 HK	110		5
36	28	4H	E 4 D5		620	-11
30	31	3S	N-2 HK		100	-1
31	30	2S	N 2 HK	110		5
34	43	3S	N-1 HK		50	1
43	34	4H	E 4 D5		620	-11
37	41	3S	N 3 HK	140		6
41	37	3S	N-1 HK		50	1
40	52	Passout				2
52	40	3S	N-2 H3		100	-1
42	48	3S	N-2 HK		100	-1
48	42	4S	N-3 H5		150	-2

21st NEC CUP Qualifying Round 3 Tuesday, February 07, 2017

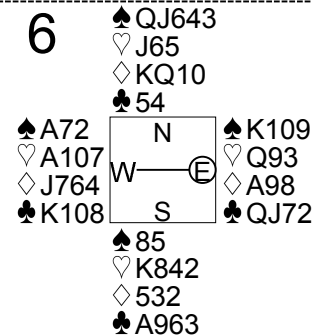
4



5



6



Board (4) Av: NS=-60

Board (5) Av: NS=+10

Board (6) Av: NS=-240

N-S	E-W	Contract	L	N-S	E-W	IMP	N-S	E-W	Contract	L	N-S	E-W	IMP	N-S	E-W	IMP				
1	53	1NT	E-3 S9	300		8	1	53	4Hx	W-2 C7	300		7	1	53	2NT	E 3 H2	150	3	
53	1	2H	W-1 D4	100		4	53	1	4H	W-1 C7	50		1	53	1	2NT	W 2 S4	120	3	
2	5	1NT	S-2 SQ		200	-4	2	5	4H	W-2 C7	100		3	2	5	3NT	E 4 H4	630	-9	
5	2	1S	W 2 H7		110	-2	5	2	4H	W-1 S8	50		1	5	2	2NT	E-1 S8	100	8	
3	51	1NT	S-1 SQ	100		-1	3	51	4Cx	S-2 DK		500	-11	3	51	3NT	E-2 S8	200	10	
51	3	1S	W 2 SA		110	-2	51	3	4H	W-1 C7	50		1	51	3	3NT	E 4 H2	630	-9	
4	29	1NT	E-1 DQ	100		4	4	29	4H	W-2 C7	100		3	4	29	1NT	W 3 S4	150	3	
29	4	2S	E 2 D3		110	-2	29	4	4H	W-2 C7	100		3	29	4	3NT	E 4 H2	630	-9	
6	38	2H	N 2 SK	110		5	6	38	4H	E-1 C7	50		1	6	38	2NT	W 2 H5	120	3	
38	6	2S	E 2 DK		110	-2	38	6	4H	W-2 D6	100		3	38	6	1NT	W 3 S6	150	3	
7	33	1NT	N-1 HK	100		-1	7	33	4H	W-2 C7	100		3	7	33	2NT	E-1 S8	100	8	
33	7	3C	N-2 S3	200		-4	33	7	4H	W-1 C7	50		1	33	7	3NT	E 4 H2	630	-9	
8	44	1NT	S 2 S7	120		5	8	44	4H	W-2 C7	100		3	8	44	3NT	W 4 S5	630	-9	
44	8	1S	W 2 D3		110	-2	44	8	4H	W-1 C7	50		1	44	8	3NT	W 3 S6	600	-8	
9	11	1S	W 2 D3		110	-2	9	11	4H	W-2 C7	100		3	9	11	3NT	W 3 S4	600	-8	
11	9	1NT	S 1 SQ	90		4	11	9	2H	W 2 C2		110	-3	11	9	1NT	W 3 S4	150	3	
10	24	2S	W 2 D2		110	-2	10	24	2H	W 3 C7		140	-4	10	24	3NT	W 3 H5	600	-8	
24	10	1NT	S 3 SQ	150		5	24	10	4H	W-1 C2	50		1	24	10	3NT	E 4 H5	630	-9	
12	14	1NT	N-2 SQ		200	-4	12	14	4H	W-1 C7	50		1	12	14	3NT	E 4 H2	630	-9	
14	12	1NT	S-1 SQ	100		-1	14	12	4H	W-2 C7	100		3	14	12	3NT	W 4 DK	630	-9	
13	26	1S	W 2 SA		110	-2	13	26	3H	W-1 C7	50		1	13	26	3NT	E-1 S8	100	8	
26	13	2S	W 2 D2		110	-2	26	13	1NT	W-1 D5	50		1	26	13	3NT	E-1 S8	100	8	
15	20	1NT	S-2 SQ	200		-4	15	20	4H	W-2 C7	100		3	15	20	3NT	E-2 S8	200	10	
20	15	1NT	S-2 SQ	200		-4	20	15	2NT	W-1 D5	50		1	20	15	3NT	E 4 H2	630	-9	
16	21	Passout				2	16	21	2H	W 2 C7		110	-3	16	21	2NT	E-1 S5	100	8	
21	16	Passout				2	21	16	4H	W-1 C7	50		1	21	16	3NT	E 4 S8	630	-9	
17	32	Passout				2	17	32	4H	W-2 CJ	100		3	17	32	2NT	W 4 S4	180	2	
32	17	1S	W 2 D3		110	-2	32	17	2H	W 3 C7		140	-4	32	17	3NT	W 4 S4	630	-9	
18	47	Passout				2	18	47	2H	W 2 S4		110	-3	18	47	2NT	E 3 H3	150	3	
47	18	Passout				2	47	18	2H	W 2 C7		110	-3	47	18	2NT	W 4 S4	180	2	
19	45	3NTxN-3	S5		800	-12	19	45	4H	W-2 C7	100		3	19	45	2NT	W 2 S4	120	3	
45	19	Passout				2	45	19	3H	W 3 C7		140	-4	45	19	3NT	E-1 S8	100	8	
22	49	Passout				2	22	49	3Sx	N-2 H9		500	-11	22	49	2NT	W 3 S4	150	3	
49	22	Passout				2	49	22	3Cx	S-3 DK		800	-13	49	22	3NT	E-1 S8	100	8	
23	46	1S	W 2 D5		110	-2	23	46	3NT	E-1 C5	50		1	23	46	3NT	E-2 S8	200	10	
46	23	Passout				2	46	23	4H	W-2 S4	100		3	46	23	3NT	E-2 S8	200	10	
25	35	Passout				2	25	35	4H	W-2 C7	100		3	25	35	3NT	E-1 S8	100	8	
35	25	3C	N-2 S5		200	-4	35	25	2H	W 2 C7		110	-3	35	25	2NT	W 4 S4		180	2
27	50	1S	W 2 C5		110	-2	27	50	2H	W 2 C7		110	-3	27	50	2NT	E-1 S8	100	8	
50	27	1H	W-1 SA	100		4	50	27	4H	W-1 C7	50		1	50	27	3NT	E 4 H2	630	-9	
28	36	1S	W 2 C2		110	-2	28	36	4H	W-2 C7	100		3	28	36	3NT	W 4 H5	630	-9	
36	28	2S	E 3 DK		140	-2	36	28	4H	W-1 C7	50		1	36	28	3NT	E-1 S8	100	8	
30	31	3S	W-2 D2	200		6	30	31	4H	W-2 D6	100		3	30	31	3NT	E-2 S8	200	10	
31	30	2S	W 2 D3		110	-2	31	30	2Dx	N 2 H2	180		5	31	30	3NT	E-2 S8	200	10	
34	43	2S	W 2 D2		110	-2	34	43	4H	W-2 C7	100		3	34	43	3NT	E 4 H3	630	-9	
43	34	2S	W 2 SK		110	-2	43	34	2H	W 2 D6		110	-3	43	34	3NT	E 3 H2	600	-8	
37	41	1S	W 2 S8		110	-2	37	41	2H	W 4 D6		170	-5	37	41	3NT	E-1 S8	100	8	
41	37	Passout				2	41	37	4H	W-2 C7	100		3	41	37	3NT	E-1 H4	100	8	
40	52	1NT	N-2 S5		200	-4	40	52	4H	W-2 C7	100		3	40	52	2NT	E-2 S8	200	10	
52	40	Passout				2	52	40	4H	W-2 C7	100		3	52	40	3NT	W 3 S4	600	-8	
42	48	Passout				2	42	48	2H	W 2 C7		110	-3	42	48	3NT	E 3 H2	600	-8	
48	42	1NT	N-2 H5		200	-4	48	42	2H	W 2 C8		110	-3	48	42	3NT	E 4 H3	630	-9	

21st NEC CUP Qualifying Round 3 Tuesday, February 07, 2017

7

♠ 92
♥ KJ7
♦ K10974
♣ Q92

♠ Q ♠ KJ1064
♥ AQ5 ♥ 1032
♦ Q532 ♦ AJ8
♣ AK876 ♣ 105

♠ A8753
♥ 9864
♦ 6
♣ J43

Board (7) Av: NS=-400

N-S	E-W	Contract	L	N-S	E-W	IMP
1	53	1NT W 3 S9			150	6
53	1	3NT W 4 DT			630	-6
2	5	3NT W 4 D9			630	-6
5	2	3NT W 4 DT			630	-6
3	51	3NT W 4 S8			630	-6
51	3	3NT W 4 DT			630	-6
4	29	3NT E-1 H9	100			11
29	4	3NT W 4 D7			630	-6
6	38	3NT E-1 DT	100			11
38	6	3NT W 5 DT			660	-6
7	33	3NT W 3 D4			600	-5
33	7	3NT W 3 S9			600	-5
8	44	3NT W-1 S9	100			11
44	8	3NT E-1 H6	100			11
9	11	3NT W 3 D9			600	-5
11	9	3NT W 3 D5			600	-5
10	24	3NT W 5 S9			660	-6
24	10	3NT W 5 D9			660	-6
12	14	3NT W 4 D3			630	-6
14	12	3NT W 4 DT			630	-6
13	26	3NT W 4 DT			630	-6
26	13	3NT W 3 D9			600	-5
15	20	4S E-4 D5	400			13
20	15	3NT E 3 H8			600	-5
16	21	1NT W 5 DT			210	5
21	16	3NT W 3 D9			600	-5
17	32	1NT W 2 DT			120	7
32	17	3NT W-1 D7	100			11
18	47	3NT W-1 S9	100			11
47	18	1NT W 4 S9			180	6
19	45	3NT W 3 S9			600	-5
45	19	3NT W-1 HJ	100			11
22	49	Passout				9
49	22	3NT W-2 S9	200			12
23	46	1NT W 4 H8			180	6
46	23	1NT W 3 DT			150	6
25	35	3NT W 4 S9			630	-6
35	25	3NT E 4 D6			630	-6
27	50	3NT W 3 DT			600	-5
50	27	3NT W 3 S9			600	-5
28	36	3NT W 5 D9			660	-6
36	28	3NT W 4 DT			630	-6
30	31	3NT W-1 D7	100			11
31	30	3NT W 4 S9			630	-6
34	43	3NT W 4 S9			630	-6
43	34	3NT W 3 D7			600	-5
37	41	2D W 3 S9			110	7
41	37	1NT W 4 S9			180	6
40	52	3NT W 5 DT			660	-6
52	40	3NT W 4 H7			630	-6
42	48	3NT W 3 D7			600	-5
48	42	3NT W 3 HK			600	-5

8

♠ AJ1085
♥ 73
♦ Q96
♣ QJ7

♠ 9 ♠ KQ32
♥ KQ6542 ♥ J
♦ AK8 ♦ J32
♣ A94 ♣ 108532

♠ 764
♥ A1098
♦ 10754
♣ K6

Board (8) Av: NS=-50

N-S	E-W	Contract	L	N-S	E-W	IMP
1	53	3H W-2 CQ		100		4
53	1	3C E 3 S7			110	-2
2	5	3H W-1 D6		50		3
5	2	3NT E-3 S7		150		5
3	51	3H W-1 CQ		50		3
51	3	3H W 4 SA			170	-3
4	29	2NT W-1 S5		50		3
29	4	3H W 3 H7			140	-3
6	38	3H E-2 CQ		100		4
38	6	3C E 3 S2		110		-2
7	33	3C E 3 S4		110		-2
33	7	2Sx N-2 HJ		300		-6
8	44	3H W-2 CQ		100		4
44	8	3H W-2 CQ		100		4
9	11	2Sx N-2 HJ		300		-6
11	9	3NT E-1 S4		50		3
10	24	3H W-2 CQ		100		4
24	10	2Sx N-2 HJ		300		-6
12	14	3C E 3 S4		110		-2
14	12	4H W-3 D6		150		5
13	26	4H W-3 CQ		150		5
26	13	3NT E-1 S7		50		3
15	20	4Hx W-2 CQ		300		8
20	15	3NT E 3 S7		400		-8
16	21	3H W-2 SA		100		4
21	16	3H W-2 CQ		100		4
17	32	3H W 4 CQ			170	-3
32	17	4H W 4 SA			420	-9
18	47	3NT E-2 S4		100		4
47	18	4H W-3 CQ		150		5
19	45	3NT E 3 S7		400		-8
45	19	2Sx N-1 HJ		100		-2
22	49	3NT E 3 S6		400		-8
49	22	3NT E 3 S7		400		-8
25	35	3C E 3 D7		110		-2
35	25	3NT E-1 D5		50		3
27	50	3C E 3 S6		110		-2
50	27	4H W-3 CQ		150		5
28	36	3H W 4 CQ			170	-3
36	28	2Sx N-2 HJ		300		-6
30	31	3H W-2 CQ		100		4
31	30	3H W-1 D6		50		3
34	43	3NT E-1 S7		50		3
43	34	3C E 3 S4			110	-2
37	41	2Sx N-1 HJ		100		-2
41	37	3H W-1 CQ		50		3
39	46	3C E 3 S6			110	-2
46	39	3H W-2 CQ		100		4
40	52	3NT E-1 S7		50		3
52	40	3NT E-2 S7		100		4
42	48	3NT E 4 S6			430	-9
48	42	3H W 3 H3			140	-3

9

♠ AJ8
♥ 532
♦ K943
♣ 543

♠ 732 ♠ Q10654
♥ AQ976 ♥ K4
♦ J52 ♦ 76
♣ KJ ♣ Q982

♠ K9
♥ J108
♦ AQ108
♣ A1076

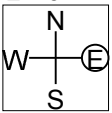
Board (9) Av: NS=+40

N-S	E-W	Contract	L	N-S	E-W	IMP
1	53	1NT S 1 H7		90		2
53	1	2D S 2 CK		90		2
2	5	1NT S 1 H6		90		2
5	2	1NT S 1 H2		90		2
3	51	1NT S 1 H2		90		2
51	3	1NT S 1 H7		90		2
4	29	1NT S 1 H7		90		2
29	4	3D S-1 S3			50	-3
6	38	3C N-4 S2			200	-6
38	6	2S W 2 D3			110	-4
7	33	1NT S 1 H7		90		2
33	7	2S E 2 HJ			110	-4
8	44	1NT S 1 H5		90		2
44	8	2S E 2 SK			110	-4
9	11	1NT S 2 H7		120		2
11	9	1NT S 1 H5		90		2
10	24	1NT S 1 H7		90		2
24	10	1NT S 2 H3		120		2
12	14	3D S-1 S7			50	-3
14	12	1NT S 1 S7		90		2
13	26	1NT S 1 H7		90		2
26	13	3D S-2 D2			100	-4
15	20	1NT S 1 H3		90		2
20	15	2D S-1 S2			50	-3
16	21	2D S 2 S7		90		2
21	16	2D S 3 S7		110		2
17	32	2D S-1 D2			50	-3
32	17	2D S-1 DJ			50	-3
18	47	1NTxN 2 S4		280		6
47	18	1H W 1 D3			80	-3
19	45	3NT S-2 H7			100	-4
45	19	2D S 3 S5		110		2
22	49	3D S-2 S2			100	-4
49	22	2D S 3 S7		110		2
25	35	1NT S 1 H3		90		2
35	25	2D S 2 CK		90		2
27	50	1NT N 2 S5		120		2
50	27	2D S 2 D2		90		2
28	36	1NT S 1 H5		90		2
36	28	2H W-1 D4		100		2
30	31	1NT S 1 H7		90		2
31	30	1NT N 2 S5		120		2
34	43	1NT S 1 H7		90		2
43	34	2S E 2 HJ			110	-4
37	41	3NT N-1 S4			50	-3
41	37	2D S 3 D2		110		2
39	46	2H W-1 D4		100		2
46	39	2D S 2 S7		90		2
40	52	3D S-1 CK			50	-3
52	40	1NT S 1 H5		90		2
42	48	1NT N 2 S5		120		2
48	42	3D S-1 S3			50	-3

10

♠ J852
♥ K854
♦ 973
♣ K6

♠ AK10976
♥ QJ9
♦ J10
♣ Q10



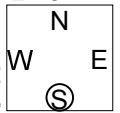
♠ 3
♥ 2
♦ AKQ8652
♣ J875

♠ Q4
♥ A10763
♦ 4
♣ A9432

11

♠ K84
♥ 87
♦ KQJ65
♣ 752

♠ 73
♥ AQJ
♦ A982
♣ A843



♠ AQJ2
♥ K10954
♦ 4
♣ QJ9

♠ 10965
♥ 632
♦ 1073
♣ K106

12

♠ Q732
♥ 86
♦ KQ8
♣ 9864

♠ KJ84
♥ J6543
♦ QJ72
♣ QJ72



♠ A10965
♥ AKQ53
♦ A
♣ K10

♠ J109742
♥ 10972
♦ 10972
♣ A53

Board (10) Av: NS=-170

Table with 6 columns: N-S, E-W, Contract, L, N-S, E-W, IMP. Contains 48 rows of board results for Board 10.

Board (11) Av: NS=-530

Table with 6 columns: N-S, E-W, Contract, L, N-S, E-W, IMP. Contains 48 rows of board results for Board 11.

Board (12) Av: NS=-450

Table with 6 columns: N-S, E-W, Contract, L, N-S, E-W, IMP. Contains 48 rows of board results for Board 12.

13

♠Q
♥AK54
♦86
♣Q87532

♠A632
♥108
♦A9742
♣J10

♠K109875
♥Q93
♦J53
♣A

♠J4
♥J762
♦KQ10
♣K964

14

♠Q2
♥AQ2
♦KQ8764
♣82

♠K105
♥1096
♦J5
♣K9743

♠J8763
♥J73
♦A9
♣Q106

♠A94
♥K854
♦1032
♣AJ5

36

♠10642
♥KQ1083
♦72
♣K10

♠AK3
♥72
♦AKJ3
♣Q862

♠QJ7
♥J954
♦1085
♣J95

♠985
♥A6
♦Q964
♣A743

Board (13) Av: NS=-70

N-S	E-W	Contract	L	N-S	E-W	IMP
1	53	3S	E 3 DK		140	-2
53	1	4S	E-1 H6	100		5
2	5	5C	N-2 ST		200	-4
5	2	4S	E-1 H6	100		5
3	51	3C	N 4 D2	130		5
51	3	4S	E 4 DK		620	-11
4	29	4S	E-1 DK	100		5
29	4	4S	E-1 H6	100		5
6	38	3S	E 3 H3		140	-2
38	6	3S	E 4 DK		170	-3
7	33	4H	N-1 CA		100	-1
33	7	4S	E-1 C6	100		5
8	44	5C	N-2 S3		200	-4
44	8	4S	E-1 C6	100		5
9	11	4S	E-1 C4	100		5
11	9	4H	N-1 CA		100	-1
10	24	3S	E 3 C6		140	-2
24	10	4S	E-1 C2	100		5
12	14	4S	E-1 C9	100		5
14	12	4S	E-1 C6	100		5
13	26	4H	N-1 ST		100	-1
26	13	3S	E 3 H6		140	-2
15	20	3S	E 3 C6		140	-2
20	15	4Sx	E 4 DK		790	-12
16	21	3S	E 4 H2		170	-3
21	16	3S	E 3 S3		140	-2
17	32	4H	N 4 CA	620		12
32	17	Passout				2
18	47	3S	E 4 DK		170	-3
47	18	4H	N-1 SA		100	-1
19	45	4Sx	E-1 DK	200		7
45	19	4S	E-1 DQ	100		5
22	49	Passout				2
49	22	4Sx	E-1 DK	200		7
25	35	4Sx	E-1 H6	200		7
35	25	4S	E 4 H6		620	-11
27	50	4Sx	E 4 DK		790	-12
50	27	4S	E-1 DK	100		5
28	36	4S	E-1 DK	100		5
36	28	4S	E-1 H3	100		5
30	31	4S	E-1 C6	100		5
31	30	4Sx	E-1 H2	200		7
34	43	4S	E-1 C6	100		5
43	34	4S	E-1 C6	100		5
37	41	4Sx	E-1 H6	200		7
41	37	Passout				2
39	46	3S	E 3 DK		140	-2
46	39	3S	E 3 H6		140	-2
40	52	4S	E 4 H2		620	-11
52	40	4S	E 4 DK		620	-11
42	48	1H	N 4 D3	170		6
48	42	4Sx	E 4 DK		790	-12

Board (14) Av: NS=+250

N-S	E-W	Contract	L	N-S	E-W	IMP
1	53	3NT S-1	C4		50	-7
53	1	3NT S 4	C4	430		5
2	5	3NT N 5	S6	460		5
5	2	3NT S-1	C4		50	-7
3	51	3NT S-1	C4		50	-7
51	3	3NT S-1	C4		50	-7
4	29	3NT S 4	S5	430		5
29	4	3NT S-1	C4		50	-7
6	38	3NT N 4	C4	430		5
38	6	4H N 6	DA	480		6
7	33	3NT S 5	HT	460		5
33	7	3NT S-1	C4		50	-7
8	44	3NT S-1	C4		50	-7
44	8	3NT S-2	S3		100	-8
9	11	3NT S-1	C4		50	-7
11	9	3NT S-1	C4		50	-7
10	24	3NT S-2	C4		100	-8
24	10	3NT S-1	C3		50	-7
12	14	3NT S 5	S5	460		5
14	12	3NT N 5	S6	460		5
13	26	3NT S-1	C5		50	-7
26	13	3NT S 6	S5	490		6
15	20	3NT N-1	C4		50	-7
20	15	3NT S 4	C4	430		5
16	21	3NT S-1	C4		50	-7
21	16	3NT S-1	S5		50	-7
17	32	3NT S 5	HT	460		5
32	17	3NT S 5	S3	460		5
18	47	3NT N 5	S3	460		5
47	18	3NT S-2	C4		100	-8
19	45	3NT S 5	HT	460		5
45	19	3NT S 5	S3	460		5
22	49	4H S 5	S5	450		5
49	22	3NT S 5	SK	460		5
25	35	3NT S-1	C4		50	-7
35	25	3NT S-1	C3		50	-7
27	50	3NT S 6	H9	490		6
50	27	3NT S 6	S5	490		6
28	36	3NT N 5	S6	460		5
36	28	3NT S-1	S5		50	-7
30	31	3NT N 5	S2	460		5
31	30	3NT N 5	S6	460		5
34	43	4H N 5	S3	450		5
43	34	3NT S 5	HT	460		5
37	41	3NT S 5	HT	460		5
41	37	3NT S 5	HT	460		5
39	46	2D N 5	S6	150		-3
46	39	3NT N 5	S6	460		5
40	52	3NT S 6	HT	490		6
52	40	3NT S 3	C4	400		4
42	48	3NT S-1	C4		50	-7
48	42	3NT S 4	HT	430		5

Board (36)

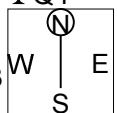
N-S	E-W	Contract	L	N-S	E-W	IMP
23	39	1NT W 2	H8		120	
39	23	1NT W 2	H8		120	

21st NEC CUP Qualifying Round 3 Tuesday, February 07, 2017

37

♠ A8653
♥ K82
♦ 1042
♣ Q4

♠ 974
♥ AQ6
♦ A973
♣ KJ7



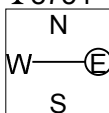
♠ QJ102
♥ 954
♦ 5
♣ A10863

♠ K
♥ J1073
♦ KQJ86
♣ 952

38

♠ K95
♥ J975
♦ Q5
♣ 8754

♠ 1086
♥ Q32
♦ AKJ86
♣ A10



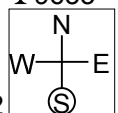
♠ AQJ743
♥ AK10
♦ 3
♣ KJ6

♠ 2
♥ 864
♦ 109742
♣ Q932

39

♠ K1086
♥ Q92
♦ K10
♣ 9653

♠ 754
♥ KJ64
♦ AQ3
♣ Q102



♠ AQ
♥ A107
♦ J9864
♣ AK4

♠ J932
♥ 853
♦ 752
♣ J87

Board (37)

N-S	E-W	Contract	L	N-S	E-W
23	39	1NT	E 1 DK		90
39	23	1NT	E 1 SK		90

IMP

Board (38)

N-S	E-W	Contract	L	N-S	E-W
23	39	6S	E 7 DT		1460
39	23	6S	E 7 C6		1460

IMP

Board (39)

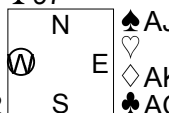
N-S	E-W	Contract	L	N-S	E-W
23	39	4NT	W 6 S6		690
39	23	6NT	E 6 S6		1440

IMP

21st NEC CUP Qualifying Round 3 Tuesday, February 07, 2017

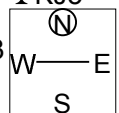
40

♠ Q762
 ♥ J1063
 ♦ J42
 ♣ 97
 ♠ 3
 ♥ A742
 ♦ 876
 ♣ J10542
 ♠ AJ984
 ♥
 ♦ AKQ3
 ♣ AQ86
 ♠ K105
 ♥ KQ985
 ♦ 1095
 ♣ K3



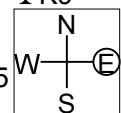
41

♠ AK109
 ♥ KJ654
 ♦ Q
 ♣ KJ5
 ♠ QJ763
 ♥ A10973
 ♦ 10
 ♣ 98
 ♠
 ♥ Q8
 ♦ KJ8542
 ♣ 76432
 ♠ 8542
 ♥ 2
 ♦ A9763
 ♣ AQ10



42

♠ Q9875
 ♥ K32
 ♦ J84
 ♣ K9
 ♠ K102
 ♥ J754
 ♦ Q1065
 ♣ 104
 ♠ J43
 ♥
 ♦ K973
 ♣ AJ7652
 ♠ A6
 ♥ AQ10986
 ♦ A2
 ♣ Q83



Board (40)

N-S	E-W	Contract	L	N-S	E-W	IMP
23	39	5C	W 6 HJ			420
39	23	3Hx	S-3 S3			500

Board (41)

N-S	E-W	Contract	L	N-S	E-W	IMP
23	39	4S	N 5 C7			450
39	23	4S	N 4 D5			420

Board (42)

N-S	E-W	Contract	L	N-S	E-W	IMP
23	39	4H	S-1 D5			100
39	23	4H	S-1 CT			100