

21st NEC CUP Qualifying Round 4 Tuesday, February 07, 2017

17

♠7
♥AJ862
♦KQ
♣AJ1097

♠AK8
♥Q10543
♦96
♣KQ4

♠J9632
♥
♦108542
♣853

♠Q1054
♥K97
♦AJ73
♣62

W N E S

Board (17) Av: NS=+370

N-S	E-W	Contract	L	N-S	E-W	IMP
1	5	4HxxN	4 D2	880		11
5	1	4H	N-1 S2		50	-9
2	53	4Hx	N 4 S2	590		6
53	2	4H	N 4 S2	420		2
3	30	4Sx	E-4 H7	800		10
30	3	4H	N 4 S3	420		2
4	28	4H	N-1 D2		50	-9
28	4	4H	N 4 S5	420		2
6	24	4H	N 4 D2	420		2
24	6	4Hx	N 4 D2	590		6
7	29	4HxxN-1	S2		200	-11
29	7	4Hx	N 4 D2	590		6
8	13	4Hx	N 4 S2	590		6
13	8	4Hx	N-1 S2		100	-10
9	43	4H	N 4 S2	420		2
43	9	4H	N 4 D2	420		2
10	41	4Hx	N 4 C3	590		6
41	10	4Hx	N 4 S2	590		6
11	25	4H	N 4 D3	420		2
25	11	4Hx	N 4 D2	590		6
12	44	4Hx	N 4 S5	590		6
44	12	4H	N-1 D2		50	-9
14	26	4H	N-1 S4		50	-9
26	14	4Hx	N-1 D2		100	-10
15	34	4H	N 5 D2	450		2
34	15	4Hx	N 4 S2	590		6
16	45	4Hx	N 4 D2	590		6
45	16	4Hx	N 4 S6	590		6
17	40	4H	N 4 D5	420		2
40	17	4H	N 4 D8	420		2
18	50	4H	N-1 S3		50	-9
50	18	4Hx	N 4 S8	590		6
19	27	4Hx	N-1 C8		100	-10
27	19	4Hx	N 4 D8	590		6
20	52	4H	N-2 D2		100	-10
52	20	4Hx	N 4 S4	590		6
21	32	4H	N-2 S3		100	-10
32	21	4H	N 4 S2	420		2
22	48	4Hx	N 4 S2	590		6
48	22	4H	N 4 SQ	420		2
23	38	4H	N-1 S2		50	-9
38	23	4Hx	N 4 D4	590		6
31	47	5Hx	N-2 S2		300	-12
47	31	3NT	S 3 D9	400		1
33	35	4Hx	N 4 D2	590		6
35	33	4H	N 4 S2	420		2
36	51	4H	N 4 D2	420		2
51	36	4Sx	E-4 H7	800		10
37	46	4H	N-1 S2		50	-9
46	37	4HxxN	4 D5	880		11
42	49	4Hx	N 4 S2	590		6
49	42	4H	N-1 D4		50	-9

18

♠9732
♥63
♦102
♣J10652

♠KQ84
♥KQ4
♦AJ3
♣AQ7

♠AJ5
♥J985
♦Q986
♣83

♠106
♥A1072
♦K754
♣K94

W N E S

Board (18) Av: NS=-440

N-S	E-W	Contract	L	N-S	E-W	IMP
1	5	3NT	W 3 C5	400		1
5	1	3NT	W 4 C2	430		0
2	53	3NT	W 4 C2	430		0
53	2	3NT	W 4 CJ	430		0
3	30	3NT	W 4 C6	430		0
30	3	3NT	W 3 C5	400		1
4	28	3NT	W 4 C5	430		0
28	4	3NT	W 5 C5	460		-1
6	24	3NT	E 5 D2	460		-1
24	6	3NT	E 3 C5	400		1
7	29	3NT	E 5 H2	460		-1
29	7	3NT	W 3 C5	400		1
8	13	3NT	W 5 C5	460		-1
13	8	3NT	E 5 ST	460		-1
9	43	3NT	W 5 C5	460		-1
43	9	3NT	W 5 C5	460		-1
10	41	3NT	W 5 C5	460		-1
41	10	3NT	W 5 C2	460		-1
11	25	3NT	E 4 C4	430		0
25	11	3NT	W 4 C2	430		0
12	44	3NT	W 3 CJ	400		1
44	12	3NT	E 5 ST	460		-1
14	26	3NT	W 5 DT	460		-1
26	14	4S	W 4 S2	420		1
15	34	3NT	W 5 C5	460		-1
34	15	3NT	W 5 C5	460		-1
16	45	3NT	W 3 C5	400		1
45	16	3NT	W 4 C5	430		0
17	40	3NT	W 5 C5	460		-1
40	17	3NT	W 5 CJ	460		-1
18	50	3NT	W 5 CJ	460		-1
50	18	3NT	W 6 H6	490		-2
19	27	3NT	W 5 C5	460		-1
27	19	3NT	W 5 H6	460		-1
20	52	3NT	W 5 H6	460		-1
52	20	3NT	W 5 S2	460		-1
21	32	3NT	W 4 C5	430		0
32	21	3NT	W 5 CJ	460		-1
22	48	3NT	W 5 CJ	460		-1
48	22	3NT	W 3 C3	400		1
23	38	3NT	W 3 C5	400		1
38	23	3NT	W 3 C4	400		1
31	47	3NT	W 3 C5	400		1
47	31	3NT	W 4 C5	430		0
33	35	3NT	W 5 C5	460		-1
35	33	3NT	W 5 C5	460		-1
36	51	3NT	W 5 C5	460		-1
51	36	3NT	W 5 H6	460		-1
37	46	3NT	W 5 H6	460		-1
46	37	3NT	W 5 C5	460		-1
42	49	3NT	W 5 C5	460		-1
49	42	3NT	W 5 C5	460		-1

19

♠A
♥K954
♦J1052
♣10865

♠K98532
♥AQ8
♦AQ3
♣2

♠1064
♥106
♦K94
♣QJ973

♠QJ7
♥J732
♦876
♣AK4

W N E S

Board (19) Av: NS=-80

N-S	E-W	Contract	L	N-S	E-W	IMP
1	5	4S	W 4 H5	620		-11
5	1	3Hx	S-3 C5	500		-9
2	53	4S	W-2 C6	200		7
53	2	3Hx	N-1 HT		100	-1
3	30	4S	W-1 C6	100		5
30	3	2S	W 2 DJ		110	-1
4	28	4S	W-2 C8	200		7
28	4	4S	W 4 H5		620	-11
6	24	2S	E 4 D2		170	-3
24	6	4S	W-2 DJ	200		7
7	29	4S	W-2 C6	200		7
29	7	4S	W-1 DJ	100		5
8	13	3S	W 4 SA		170	-3
13	8	4S	W-2 C5	200		7
9	43	4S	W-2 DJ	200		7
43	9	3S	W 4 H5		170	-3
10	41	3S	W-1 DJ	100		5
41	10	4S	W-2 C6	200		7
11	25	3S	W-1 DJ	100		5
25	11	2S	W 3 D2		140	-2
12	44	4S	W 4 H5		620	-11
44	12	4S	W-2 C6	200		7
14	26	4S	W-2 DJ	200		7
26	14	2S	W 3 C6		140	-2
15	34	4S	W-2 DJ	200		7
34	15	2S	W 3 DJ		140	-2
16	45	3S	W-1 C6	100		5
45	16	3S	W 3 C6		140	-2
17	40	3S	W 3 C5		140	-2
40	17	3S	W 3 DJ		140	-2
18	50	2S	W 3 DJ		140	-2
50	18	2S	W 4 H3		170	-3
19	27	4S	W-1 C6	100		5
27	19	4S	W-1 DJ	100		5
20	52	4S	W-2 DJ	200		7
52	20	3S	W 3 DJ		140	-2
21	32	4S	W 4 DJ		620	-11
32	21	3S	W 3 D2		140	-2
22	48	3S	W 4 C6		170	-3
48	22	3S	W 3 DJ		140	-2
23	38	4S	W 4 H5		620	-11
38	23	3S	W 3 C6		140	-2
31	47	3S	W 3 H4		140	-2
47	31	3S	W 3 DJ		140	-2
33	35	4S	W-2 DJ	200		7
35	33	4S	W 4 H3		620	-11
36	51	3S	W 3 C6		140	-2
51	36	4S	W 4 H4		620	-11
37	46	4S	W-2 D5	200		7
46	37	4S	W-2 DJ	200		7
42	49	4S	W-1 H4	100		5
49	42	3S	W 3 C5		140	-2

21st NEC CUP Qualifying Round 4 Tuesday, February 07, 2017

20

♠ J97
♥ A10987
♦ A6
♣ K32

♠ A2
♥ KJ5
♦ K107
♣ Q10964

♠ Q108
♥ Q62
♦ 832
♣ A875

♠ K6543
♥ 43
♦ QJ954
♣ J

21

♠ Q109
♥ KJ753
♦ 10
♣ 8653

♠ AJ3
♥ 8642
♦ QJ95
♣ AQ

♠ 8754
♥ 10
♦ 8743
♣ KJ97

♠ K62
♥ AQ9
♦ AK62
♣ 1042

22

♠ 98
♥ 964
♦ A972
♣ AJ42

♠ Q1075
♥ KQ1073
♦ Q86
♣ 6

♠ KJ642
♥ 2
♦ K1054
♣ 875

♠ A3
♥ AJ85
♦ J3
♣ KQ1093

Board (20) Av: NS=-40

N-S	E-W	Contract	L	N-S	E-W	IMP
1	5	2S	N 2 D2	110		4
5	1	1NT	E 1 H4		90	-2
2	53	2S	S 3 C4	140		5
53	2	1NT	E 3 DQ		150	-3
3	30	2S	N-1 D2	100		-2
30	3	1NT	W 1 H7		90	-2
4	28	3S	S-1 CT		100	-2
28	4	1NT	E-1 DJ	100		4
6	24	1NT	E 4 D2		180	-4
24	6	1NT	E-1 DQ	100		4
7	29	4Sx	S-1 CT		200	-4
29	7	2D	S-1 CT	100		-2
8	13	1NT	W 2 HT		120	-2
13	8	1NT	W 2 H4		120	-2
9	43	1NT	E 3 H4		150	-3
43	9	1NT	W 4 HT		180	-4
10	41	2H	N 2 CA	110		4
41	10	2S	S 4 C9	170		5
11	25	1H	N 1 D2	80		3
25	11	1NTxW	3 HT		580	-11
12	44	1NT	E-1 DQ	100		4
44	12	2D	S-1 CT		100	-2
14	26	2S	N 3 CA	140		5
26	14	1NT	W 4 H9		180	-4
15	34	3C	W 4 SJ		130	-3
34	15	1NT	W 2 HT		120	-2
16	45	1H	N 1 D2	80		3
45	16	1NT	E 2 D5		120	-2
17	40	3H	N-1 CA		100	-2
40	17	1NTxE	-1 DQ	200		6
18	50	2S	S 2 CT	110		4
50	18	3C	W-1 HA	100		4
19	27	1H	N 1 D8	80		3
27	19	1NT	E-1 S4	100		4
20	52	3S	S 3 C4	140		5
52	20	1NTxE	1 DQ		180	-4
21	32	1NT	E 1 H4		90	-2
32	21	1NT	W 1 DQ		90	-2
22	48	3S	S 4 CT	170		5
48	22	2C	W 2 C5		90	-2
23	38	1NT	E 2 DQ		120	-2
38	23	1NT	E 1 DQ		90	-2
31	47	3C	W-1 HA	100		4
47	31	1NT	E 1 H4		90	-2
33	35	2C	W 3 DA		110	-2
35	33	1NT	E 4 D5		180	-4
36	51	1NT	E 1 H4		90	-2
51	36	1NT	E 1 H7		90	-2
37	46	2C	W 3 HA		110	-2
46	37	1NT	E 1 H4		90	-2
42	49	1NT	E 1 DQ		90	-2
49	42	1NT	E 4 H4		180	-4

Board (21) Av: NS=+110

N-S	E-W	Contract	L	N-S	E-W	IMP
1	5	2H	N 2 DQ	110		0
5	1	4H	S-1 DQ		100	-5
2	53	2H	S 3 DQ	140		1
53	2	2H	S 2 DQ	110		0
3	30	3H	S 3 DQ	140		1
30	3	2H	S 2 DQ	110		0
4	28	2H	S 2 DQ	110		0
28	4	2H	S 2 H5	110		0
6	24	2H	N 2 DQ	110		0
24	6	2H	S 3 DQ	140		1
7	29	2H	S 2 DK	110		0
29	7	2H	S 2 H3	110		0
8	13	2H	S 3 D5	140		1
13	8	2H	S 3 DQ	140		1
9	43	2H	S 2 DQ	110		0
43	9	2H	S 2 DQ	110		0
10	41	2H	E-3 DA	150		1
41	10	2H	S 2 DQ	110		0
11	25	2H	S 2 DQ	110		0
25	11	2H	S 3 DJ	140		1
12	44	2H	S 3 DQ	140		1
44	12	2H	S 2 DQ	110		0
14	26	3H	S-1 DQ		100	-5
26	14	2H	S 3 DQ	140		1
15	34	2H	S 2 DQ	110		0
34	15	3H	S-1 H2		100	-5
16	45	2H	S 2 DQ	110		0
45	16	2Hx	S 2 DQ	670		11
17	40	2H	S 2 DQ	110		0
40	17	1NT	S 3 DQ	150		1
18	50	2H	S 2 DQ	110		0
50	18	2H	S 2 DQ	110		0
19	27	2H	S 3 H3	140		1
27	19	2H	S 2 H2	110		0
20	52	2H	S 2 DQ	110		0
52	20	2H	S 2 DQ	110		0
21	32	2H	S 2 H2	110		0
32	21	2H	S 2 DQ	110		0
22	48	2H	S 2 DQ	110		0
48	22	2H	S 2 D5	110		0
23	38	2H	S 3 DQ	140		1
38	23	2H	S 2 DQ	110		0
31	47	3H	N 3 S5	140		1
47	31	2H	S 3 D5	140		1
33	35	2H	N 3 S5	140		1
35	33	2H	S 2 DQ	110		0
36	51	2H	S 2 H2	110		0
51	36	2H	S 3 DQ	140		1
37	46	2H	S 2 DQ	110		0
46	37	2H	S 2 D9	110		0
42	49	2H	S 2 DQ	110		0
49	42	2H	S 2 DQ	110		0

Board (22) Av: NS=+180

N-S	E-W	Contract	L	N-S	E-W	IMP
1	5	3NT	S 3 HK	400		6
5	1	3NT	S-1 S5		50	-6
2	53	3NT	S 3 HK	400		6
53	2	3NT	S 3 HQ	400		6
3	30	3NT	S 3 HK	400		6
30	3	3NT	S 3 HQ	400		6
4	28	3NT	S-1 HQ		50	-6
28	4	3H	S-3 S7		150	-8
6	24	3NT	N 4 H7	430		-6
24	6	3S	E 3 CK		140	-8
7	29	4D	S-3 HK		150	-8
29	7	3NT	S 3 HQ	400		6
8	13	1NT	S 3 HQ	150		-1
13	8	3NT	S 3 HK	400		6
9	43	3NT	S-1 HQ		50	-6
43	9	3NT	S 3 HK	400		6
10	41	3NT	S-1 HQ		50	-6
41	10	3NT	S 3 HK	400		6
11	25	3NT	S-1 HK		50	-6
25	11	3NT	S-1 HK		50	-6
12	44	5C	S-1 HK		50	-6
44	12	3NT	S-1 S6		50	-6
14	26	1NT	S 3 HK	150		-1
26	14	4Sx	E-2 CK	500		8
15	34	3NT	S 3 HK	400		6
34	15	3NT	S 3 HQ	400		6
16	45	2NT	S 2 HK	120		-2
45	16	5C	S-1 S7		50	-6
17	40	3NT	S-1 HK		50	-6
40	17	4C	S-1 S5		50	-6
18	50	2NT	S 2 HK	120		-2
50	18	2C	S 4 HK	130		-2
19	27	2NT	S 2 S4	120		-2
27	19	4S	W-3 CA	300		3
20	52	3NT	S-1 HK		50	-6
52	20	3NT	S 3 HK	400		6
21	32	2NT	S 2 HK	120		-2
32	21	2NT	S 2 S4	120		-2
22	48	3NT	S 3 H7	400		6
48	22	3NT	S 3 HK	400		6
23	38	1NT	S 2 HQ	120		-2
38	23	3NT	N 4 H7	430		6
31	47	2NT	S 2 S7	120		-2
47	31	2NT	S 2 S5	120		-2
33	35	4S	W-2 CA	200		1
35	33	3NT	S 4 HQ	430		6
36	51	3NT	S-1 S5		50	-6
51	36	3C	S 3 HK	110		-2
37	46	4Sx	E-1 CQ	200		1
46	37	2C	S 4 HK	130		-2
42	49	3NT	S 3 HK	400		6
49	42	2NT	S 2 S6	120		-2

21st NEC CUP Qualifying Round 4 Tuesday, February 07, 2017

23

♠ QJ985
♥ K
♦ 953
♣ Q1064

♠ K4
♥ J876532
♦ 107
♣ 85

N
W — E
S

♠ 1063
♥ A9
♦ QJ862
♣ K93

♠ A72
♥ Q104
♦ AK4
♣ AJ72

24

♠ J
♥ Q642
♦ A5
♣ AKQJ65

♠ A1094
♥ K105
♦ KJ876
♣ 2

N
W — E
S

♠ KQ873
♥ AJ3
♦ 432
♣ 107

♠ 652
♥ 987
♦ Q109
♣ 9843

25

♠ J1064
♥ 72
♦ 62
♣ K10942

♠ 5
♥ KQ54
♦ AK97
♣ AJ87

N
W — E
S

♠ KQ982
♥ 98
♦ QJ108
♣ 63

♠ A73
♥ AJ1063
♦ 543
♣ Q5

Board (23) Av: NS=+490

Board (24) Av: NS=-340

Board (25) Av: NS=-40

N-S	E-W	Contract	L	N-S	E-W	IMP	N-S	E-W	Contract	L	N-S	E-W	IMP	N-S	E-W	Contract	L	N-S	E-W	IMP			
1	5	3NT	S	6	SK	690	5	1	5	4Sx	E	4	H8	590	-6	1	5	3NT	W-1	H7	100	4	
5	1	3NT	S	4	DT	630	4	5	1	4S	W	4	CA	420	-2	5	1	2Sx	S-5	S5	1100	-14	
2	53	4S	S	5	DT	650	4	2	53	4S	W	4	CK	420	-2	2	53	3NT	W-1	H7	100	4	
53	2	4S	N	4	HA	620	4	53	2	4S	W	4	CA	420	-2	53	2	3NT	W-1	H7	100	4	
3	30	3NT	S	4	DT	630	4	3	30	4S	E	5	C9	450	-3	3	30	3NT	W	3	H7	600	-11
30	3	4S	N	5	D6	650	4	30	3	4S	E	4	C4	420	-2	30	3	3NT	E-1	C4	100	4	
4	28	4S	N	5	S3	650	4	4	28	4S	W	4	CK	420	-2	4	28	3NT	W-1	C4	100	4	
28	4	3S	N	5	HA	200	-7	28	4	4S	E	4	C4	420	-2	28	4	3NT	W-2	C4	200	6	
6	24	3S	N	5	D2	200	-7	6	24	5Cx	N-3	D2	500	-4	6	24	3NT	E-1	D2	100	4		
24	6	4S	N	5	HA	650	4	24	6	4S	E	4	H9	420	-2	24	6	3NT	W-1	H7	100	4	
7	29	3NT	S	4	DT	630	4	7	29	2Cx	N	2	SK	180	11	7	29	3NT	W-3	H7	300	8	
29	7	4S	N	5	DQ	650	4	29	7	4S	E	5	H7	450	-3	29	7	3NT	W-2	C9	200	6	
8	13	4S	S	5	H5	650	4	8	13	5Cx	N-3	SK	500	-4	8	13	3NT	W-1	H7	100	4		
13	8	4S	N	4	DQ	620	4	13	8	4C	N-2	SK	100	6	13	8	3NT	W-1	C4	100	4		
9	43	4S	N	5	DQ	650	4	9	43	4S	W	4	C4	420	-2	9	43	5D	E-1	D2	100	4	
43	9	4S	N	5	DQ	650	4	43	9	4S	W	4	CA	420	-2	43	9	2Sx	N-3	DQ	500	-10	
10	41	4S	N	5	D3	650	4	10	41	3S	E	4	H7	170	5	10	41	3NT	W-1	C4	100	4	
41	10	4S	N	5	HA	650	4	41	10	4S	W	4	DT	420	-2	41	10	3NT	W-1	H7	100	4	
11	25	5C	S-1	H2		100	-11	11	25	3S	W	4	CA	170	5	11	25	3NT	W-1	C9	100	4	
25	11	4S	S	5	H7	650	4	25	11	5Cx	N-3	SK	500	-4	25	11	3NT	W-1	C3	100	4		
12	44	4S	N	5	DQ	650	4	12	44	5Cx	N-3	SK	500	-4	12	44	3NT	W-1	H7	100	4		
44	12	4S	N	5	DQ	650	4	44	12	4S	W	4	CK	420	-2	44	12	3NT	W-1	H7	100	4	
14	26	4S	N	5	S3	650	4	14	26	3S	E	5	C9	200	4	14	26	3NT	W-1	H7	100	4	
26	14	3NT	S-2	H6		200	-12	26	14	4S	W	4	CA	420	-2	26	14	3NT	W-1	H7	100	4	
15	34	3NT	S	4	DT	630	4	15	34	4S	W	4	CA	420	-2	15	34	3NT	W-1	C4	100	4	
34	15	4S	N	5	DQ	650	4	34	15	3C	S-1	C2	50	7	34	15	3NT	W	3	CT	600	-11	
16	45	4S	N	4	DQ	620	4	16	45	3S	E	4	C9	170	5	16	45	3NT	W-1	C4	100	4	
45	16	3H	W-2	C6		200	-7	45	16	3S	E	4	C4	170	5	45	16	3NT	W-3	C9	300	8	
17	40	4S	N	5	HA	650	4	17	40	5Hx	N-5	SK	1100	-13	17	40	3NT	W-1	C4	100	4		
40	17	3NT	S-3	H6		300	-13	40	17	3S	E	4	C3	170	5	40	17	3NT	W-1	CT	100	4	
18	50	4S	N	4	DQ	620	4	18	50	4S	E	4	C3	420	-2	18	50	3NT	W-1	C4	100	4	
50	18	3NT	S-3	H6		300	-13	50	18	4C	N-2	SK	100	6	50	18	2S	W	2	C4	110	-2	
19	27	5S	N-1	DQ		100	-11	19	27	5Cx	N-3	SK	500	-4	19	27	3NT	W	3	CT	600	-11	
27	19	4S	N	5	HA	650	4	27	19	4S	E	5	C9	450	-3	27	19	3C	N-2	SK	100	-2	
20	52	4S	N	4	HA	620	4	20	52	3S	E	4	S2	170	5	20	52	3NT	W	3	H7	600	-11
52	20	4S	N	5	HA	650	4	52	20	4S	E	4	C4	420	-2	52	20	3NT	W	3	H7	600	-11
21	32	4S	N	5	HA	650	4	22	48	4C	N-1	SK	50	7	22	48	3NT	W-2	C4	200	6		
32	21	4S	N	4	DQ	620	4	48	22	3S	E	4	C4	170	5	48	22	2S	E	4		170	-4
22	48	4S	N	4	DQ	620	4	23	38	4S	E	5	C8	450	-3	23	38	3NT	W	4	CT	630	-11
48	22	4S	N	4	HA	620	4	38	23	5Cx	N-3	SK	500	-4	38	23	3NT	W-1	H7	100	4		
23	38	4S	N	4	HA	620	4	31	47	3S	W	4	CA	170	5	31	47	1H	S-1	DK	50	0	
38	23	3NT	S-3	H6		300	-13	47	31	4Cx	S-2	D8	300	1	47	31	3NT	W-1	CT	100	4		
31	47	3NT	S-3	H2		300	-13	32	39	5Cx	N-3	SK	500	-4	32	39	3NT	W-1	C4	100	4		
47	31	3NT	S	5	H8	660	5	39	32	3S	E	4	C8	170	5	39	32	3D	E	3	HA	110	-2
33	35	4S	N	5	DQ	650	4	33	35	4S	E	4	C4	420	-2	33	35	3NT	W	3	C9	600	-11
35	33	3NT	S-3	H6		300	-13	35	33	4S	E	4	C4	420	-2	35	33	3NT	W	3	C4	600	-11
36	51	4S	N	6	DJ	680	5	36	51	3S	E	4	C4	170	5	36	51	3NT	W-1	H7	100	4	
51	36	4S	N	4	DQ	620	4	51	36	3S	E	4	C3	170	5	51	36	3NT	W-1	C3	100	4	
37	46	4S	N	4	HA	620	4	37	46	5S	E	5	C4	450	-3	37	46	3NT	W-1	H7	100	4	
46	37	4S	N	5	DQ	650	4	46	37	3S	E	5	C3	200	4	46	37	3D	E	3	D5	110	-2
42	49	4S	N	5	DQ	650	4	42	49	5Cx	N-3	SK	500	-4	42	49	3NT	W-1	H7	100	4		
49	42	4S	N	5	HA	650	4	49	42	3S	E	4	H9	170	5	49	42	3NT	W-1	H7	100	4	

21st NEC CUP Qualifying Round 4 Tuesday, February 07, 2017

26

♠ 10872
♥ 63
♦ J1085
♣ J76

♠ A43
♥ AJ8
♦ KQ942
♣ 32

♠ 95
♥ K9752
♦ A763
♣ A8

♠ KQJ6
♥ Q104
♦
♣ KQ10954

N
W—|—E
S

27

♠ AQ1075
♥ AKJ10
♦ 1065
♣ 8

♠ J432
♥ 843
♦ J94
♣ AQ10

♠ K98
♥ 652
♦ 8732
♣ 752

♠ 6
♥ Q97
♦ AKQ
♣ KJ9643

N
W—|—E
S

28

♠ KJ1064
♥ A852
♦ KJ8
♣ 7

♠ Q753
♥ J1073
♦ A
♣ AK105

♠ A98
♥ K64
♦ 62
♣ Q9863

♠ 2
♥ Q9
♦ Q1097543
♣ J42

N
W—|—E
S

Board (26) Av: NS=-440

N-S	E-W	Contract	L	N-S	E-W	IMP
1	5	4H	E 4 SK		620	-5
5	1	4H	E-1 SK	100		11
2	53	6H	E-2 SK	200		12
53	2	4H	E 4 SK		620	-5
3	30	4D	W 5 C2		150	7
30	3	4H	E-1 SK	100		11
4	28	4H	E-1 SK	100		11
28	4	4H	E 4 SK		620	-5
6	24	5Cx	N-2 D2		500	-2
24	6	4H	E 4 SK		620	-5
7	29	4Sx	S-3 DK		800	-8
29	7	4H	E-1 SK	100		11
8	13	4H	E 5 SK		650	-5
13	8	5D	W 5 C6		600	-4
9	43	4H	E 5 D2		650	-5
43	9	4H	E 5 SK		650	-5
10	41	4Sx	S-2 HA		500	-2
41	10	4Sx	S-2 DK		500	-2
11	25	4Sx	S-2 DK		500	-2
25	11	5H	E-2 SK	200		12
12	44	4H	E 5 SK		650	-5
44	12	4H	E-1 SK	100		11
14	26	4H	E-1 SK	100		11
26	14	4H	E 4 SK		620	-5
15	34	4Sx	S-2 DK		500	-2
34	15	5H	E-2 SK	200		12
16	45	4H	E 4 SK		620	-5
45	16	4H	E 5 CQ		650	-5
17	40	4H	E 4 SK		620	-5
40	17	4H	E 4 SK		620	-5
18	50	4H	E 5 CK		650	-5
50	18	2D	W 5 C3		150	7
19	27	4H	E 5 CK		650	-5
27	19	4H	E 5 SK		650	-5
20	52	4H	E 4 SK		620	-5
52	20	4H	E 5 SK		650	-5
22	48	5Cx	S-2 HA		500	-2
48	22	4H	E-1	100		11
23	38	4H	E 5 SK		650	-5
38	23	4H	E-1 SK	100		11
31	47	4H	E 4 SK		620	-5
47	31	5H	E 5 SK		650	-5
32	39	5Cx	S-2 DK		500	-2
39	32	4S	S-1 H6		100	8
33	35	4H	E 4 SQ		620	-5
35	33	4H	E 4 SQ		620	-5
36	51	4H	E 5 SK		650	-5
51	36	4Sx	S-3 DK		800	-8
37	46	4H	E 5 SQ		650	-5
46	37	5D	W 5 S2		600	-4
42	49	4H	W 5 C6		650	-5
49	42	4H	E 4 SK		620	-5

Board (27) Av: NS=+320

N-S	E-W	Contract	L	N-S	E-W	IMP
1	5	3NT S 3 S4		400		2
5	1	3NT N 3 D8		400		2
2	53	3NT S 3 D4		400		2
53	2	4H N 5 D8		450		4
3	30	3NT S 4 D7		430		3
30	3	3NT S 3 H8		400		2
4	28	3NT S 3 H8		400		2
28	4	3NT N 3 D7		400		2
6	24	3NT N 3 D2		400		2
24	6	3NT S 3 S2		400		2
7	29	4H N 4 D3		420		3
29	7	3NT S 3 S2		400		2
8	13	3NT N 4 D6		430		3
13	8	3NT S 3 S2		400		2
9	43	3NT N 4 S8		430		3
43	9	3NT S 3 D4		400		2
10	41	3NT N 4 D3		430		3
41	10	3NT S 3 H8		400		2
11	25	3NT S 4 D4		430		3
25	11	3NT S 4 D3		430		3
12	44	3D N-1 D6			50	-9
44	12	3NT S 4 D4		430		3
14	26	3NT S 3 H8		400		2
26	14	3NT S-1 D4			50	-9
15	34	3NT S 4 D2		430		3
34	15	3NTxS 3 D4		550		6
16	45	3NT S 3 D4		400		2
45	16	3NT S 3 H4		400		2
17	40	7H N-1 D7			50	-9
40	17	3NT S 3 DJ		400		2
18	50	3NT S-1 H4			50	-9
50	18	3NT S 3 D4		400		2
19	27	3NT S-1 DJ			50	-9
27	19	3NT S 3 D4		400		2
20	52	3NT S-1 D4			50	-9
52	20	3NT S 3 H8		400		2
22	48	3NT S 3 H8		400		2
48	22	3NT S 4 H5		430		3
23	38	3NT N 3 H6		400		2
38	23	3NT S-1 H8			50	-9
31	47	3NT S 3 D4		400		2
47	31	3NT S 3 D5		400		2
32	39	3NT S-1 D4			50	-9
39	32	3NT S 3 S6		400		2
33	35	3NT S 3 D4		400		2
35	33	4NT S-1 D4			50	-9
36	51	3NT S-1 D4			50	-9
51	36	3NT S 4 D2		430		3
37	46	3NT S 4 H8		430		3
46	37	3NT N 4 D4		430		3
42	49	3NT S 3 D4		400		2
49	42	3NT S-1 D4			50	-9

Board (28) Av: NS=-60

N-S	E-W	Contract	L	N-S	E-W	IMP
1	5	4C W 5 DK		150		-3
5	1	3C W 4		130		-2
2	53	3D S-1 CA		100		-1
53	2	3C W 5 SJ		150		-3
3	30	3C W 3 C7		110		-2
30	3	3NT W 4 S6		430		-9
4	28	3C E 3 S2		110		-2
28	4	1NT E 1 D9		90		-1
6	24	1NT E 2 D2		120		-2
24	6	4C W-1 DK	50			3
7	29	5Dx S-2 CK		500		-10
29	7	2Dx S 4 CA	580			12
8	13	5C E-1 S2	50			3
13	8	3C E 4 D2		130		-2
9	43	2NT W 3 ST		150		-3
43	9	3C W 5 SJ		150		-3
10	41	3NT W-2 H2	100			4
41	10	3C W 4 C7		130		-2
11	25	1NT E 1 D9		90		-1
25	11	5C E-2 S2	100			4
12	44	4D S-1 CK		100		-1
44	12	1NT W 3 SJ		150		-3
14	26	3C W 4 C7		130		-2
26	14	2Dx S 4 CA	580			12
15	34	4D S 4 CA	130			5
34	15	3NT W 3 SJ		400		-8
16	45	3D S-1 CK		100		-1
45	16	1NT E 1 S2		90		-1
17	40	3C E 5 SJ		150		-3
40	17	3D S 4 CA	130			5
18	50	3D S 4 CA	130			5
50	18	5D N-2 CA		200		-4
19	27	4C W-1 C7	50			3
27	19	3C W 4 C7		130		-2
20	52	2NT W 4 SJ		180		-3
52	20	3C W 5 SJ		150		-3
22	48	3C W 4 HA		130		-2
48	22	3NT E-2 DT	100			4
23	38	2H N-4 H4		400		-8
38	23	4Dx S-1 CA		200		-4
31	47	3NT W-1 SJ	50			3
47	31	1NT E 2 S2		120		-2
32	39	4D S-1 CA		100		-1
39	32	1NT E 3 DT		150		-3
33	35	3NT E-3 S2	150			5
35	33	3NT W-2 H3	100			4
36	51	1NT E 1 D7		90		-1
51	36	3D S 4 CK	130			5
37	46	4D S 4 CA	130			5
46	37	1NT E 4 DT		180		-3
42	49	3NT W-1 DJ	50			3
49	42	4C W-1 D8	50			3

29

♠ A4
 ♥ 1042
 ♦ 109
 ♣ AK10852
 ♠ KQJ1097
 ♥ 853
 ♦ A
 ♣ QJ4
 ♠ 8653
 ♥ A7
 ♦ KQJ53
 ♣ 93
 ♠ 2
 ♥ KQJ96
 ♦ 87642
 ♣ 76

30

♠ J9
 ♥ 7632
 ♦ Q9
 ♣ 109865
 ♠ Q10842
 ♥ K
 ♦ AKJ732
 ♣ 2
 ♠ A3
 ♥ Q10984
 ♦ 10
 ♣ AQJ43
 ♠ K765
 ♥ AJ5
 ♦ 8654
 ♣ K7

38

♠ QJ102
 ♥ Q10
 ♦ KJ8
 ♣ AK102
 ♠ A843
 ♥ J532
 ♦ 962
 ♣ J4
 ♠ K
 ♥ A9764
 ♦ A5
 ♣ Q9876
 ♠ 9765
 ♥ K8
 ♦ Q10743
 ♣ 53

Board (29) Av: NS=-90

N-S	E-W	Contract	L	N-S	E-W	IMP
1	5	4S	W-1	CK	100	5
5	1	3C	N	4	DK	130
2	53	4S	W-1	CA	100	5
53	2	4S	W-1	CA	100	5
3	30	4S	W-1	CA	100	5
30	3	3S	W	3	CK	140 -2
4	28	4S	W-1	CK	100	5
28	4	4S	W-1	CA	100	5
6	24	2S	E	3	D2	140 -2
24	6	4S	W-1	CA	100	5
7	29	4S	W	4	CA	620 -11
29	7	4S	W-1	CA	100	5
8	13	4S	W-1	CA	100	5
13	8	4S	W-1	CA	100	5
9	43	4S	W-1	CA	100	5
43	9	4S	W-1	CA	100	5
10	41	4S	W-1	CA	100	5
41	10	4S	W-1	CA	100	5
11	25	4S	W-1	CA	100	5
25	11	4Sx	W	4	CK	790 -12
12	44	4S	W-1	CA	100	5
44	12	4S	W	4	CK	620 -11
14	26	4S	W-1	CA	100	5
26	14	3S	W	3	CA	140 -2
15	34	4S	W	4	CA	620 -11
34	15	4S	W-1	CA	100	5
16	45	4S	W	4	CA	620 -11
45	16	3S	W	4	CA	170 -2
17	40	4S	W-1	CA	100	5
40	17	4S	W-1	CA	100	5
18	50	2S	W	4	CA	170 -2
50	18	2S	W	3	CA	140 -2
19	27	4S	W-1	CK	100	5
27	19	4S	W	4	CA	620 -11
20	52	4S	W-1	CK	100	5
52	20	4S	W-1	CK	100	5
22	48	4S	W-1	CA	100	5
48	22	4H	S-2	DA	200	-3
23	38	4S	W-1	CA	100	5
38	23	4S	W	4	CK	620 -11
31	47	4S	W-1	CA	100	5
47	31	2S	W	3	H2	140 -2
32	39	4S	W	4	CA	620 -11
39	32	4S	W-1	CA	100	5
33	35	3S	W	3	CK	140 -2
35	33	4S	W	4	CK	620 -11
36	51	2S	W	3	CA	140 -2
51	36	4S	W-1	CK	100	5
37	46	4S	W	4	CK	620 -11
46	37	4S	W-1	CA	100	5
42	49	3S	W	3	CK	140 -2
49	42	3S	W	4	CK	170 -2

Board (30) Av: NS=-410

N-S	E-W	Contract	L	N-S	E-W	IMP
1	5	4S	W	6	H3	480 -2
5	1	4S	E	5	DT	450 -1
2	53	4S	E	5	DT	450 -1
53	2	5Hx	N-3	S6	500	-3
3	30	5S	W	6	H7	480 -2
30	3	4S	E	4	D9	420 0
4	28	4S	W	6	H6	480 -2
28	4	4S	E	5	DT	450 -1
6	24	4S	E	6	D2	480 -2
24	6	5Hx	S-2	DK	300	3
7	29	5D	E	5	HK	400 0
29	7	5Cx	S-2	DA	300	3
8	13	5Cx	S-3	DK	500	-3
13	8	5Hx	S-3	DK	500	-3
9	43	5D	E	5	CA	400 0
43	9	5S	E	5	CA	450 -1
10	41	4S	W	6	H7	480 -2
41	10	5Hx	N-3	S6	500	-3
11	25	4S	W	6	H3	480 -2
25	11	4S	W	5	CT	450 -1
12	44	5Hx	S-4	DK	800	-9
44	12	4S	W	5	C7	450 -1
14	26	5Cx	S-3	DA	500	-3
26	14	4S	E	6	HT	480 -2
15	34	4S	E	6	DT	480 -2
34	15	5Hx	N-3	D5	500	-3
16	45	5S	W	6	H7	480 -2
45	16	5D	E	5	SA	400 0
17	40	4S	W	6	H7	480 -2
40	17	5S	E-1	DT	50	10
18	50	4S	W	6	H6	480 -2
50	18	5C	S-3	DA	150	6
19	27	4S	W	6	DQ	480 -2
27	19	4S	W	5	CT	450 -1
20	52	4S	W	6	H3	480 -2
52	20	5Sx	W-1	CT	100	11
22	48	5Hx	S-3	DA	500	-3
48	22	4S	W	5	DT	450 -1
23	38	4S	E	4	DT	420 0
38	23	4S	E	6	DT	480 -2
31	47	6D	E-1	SA	50	10
47	31	4S	E	6	DT	480 -2
32	39	5S	E-1	DT	50	10
39	32	5D	E	6	H7	420 0
33	35	4S	E	5	DT	450 -1
35	33	5D	E	5	CA	400 0
36	51	4S	E	5	DT	450 -1
51	36	4S	E	5	H8	450 -1
37	46	4S	W	5	DQ	450 -1
46	37	4S	E	5	DT	450 -1
42	49	3D	E	5	HT	150 6
49	42	4S	W	6	H7	480 -2

Board (38)

N-S	E-W	Contract	L	N-S	E-W	IMP
21	39	3H	E	4	C5	170
39	21	3S	S	3	H2	140

21st NEC CUP Qualifying Round 4 Tuesday, February 07, 2017

39

♠ 943
 ♥ AJ107
 ♦ 85
 ♣ 9842
 ♠ K1087652
 ♥ 954
 ♦ K
 ♣ KJ
 N
 W — E
 S
 ♠ K2
 ♥ AQ107642
 ♣ 10765
 ♠ AQJ
 ♥ Q863
 ♦ J93
 ♣ AQ3

Board (39)

N-S	E-W	Contract	L	N-S	E-W	IMP
21	39	3S	W-2 HA	200		
39	21	2S	W-1 D8	100		

40

♠ K105
 ♥ AQJ32
 ♦ 752
 ♣ 84
 ♠ Q743
 ♥ 96
 ♦ J94
 ♣ K1092
 N
 W — E
 S
 ♠ J862
 ♥ K5
 ♦ AKQ6
 ♣ AQ6
 ♠ A9
 ♥ 10874
 ♦ 1083
 ♣ J753

Board (40)

N-S	E-W	Contract	L	N-S	E-W	IMP
21	39	4S	W-1 C8	50		
39	21	4S	W-1 C8	50		

41

♠ 764
 ♥ 86
 ♦ A84
 ♣ QJ765
 ♠ J9
 ♥ KJ532
 ♦ 107
 ♣ A432
 N
 W — E
 S
 ♠ K1083
 ♥ Q74
 ♦ K32
 ♣ K109
 ♠ AQ52
 ♥ A109
 ♦ QJ965
 ♣ 8

Board (41)

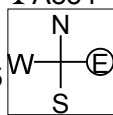
N-S	E-W	Contract	L	N-S	E-W	IMP
21	39	2H	W 2 CQ	110		
39	21	3D	S-1 H2	50		

21st NEC CUP Qualifying Round 4 Tuesday, February 07, 2017

42

♠ Q8
♥ AQJ3
♦ 1063
♣ A854

♠ 65
♥ 10865
♦ QJ985
♣ 73



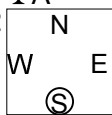
♠ AKJ1092
♥ K
♦ K
♣ KQ1062

♠ 743
♥ 9742
♦ A742
♣ J9

43

♠ K74
♥ Q93
♦ 1076532
♣ A

♠ QJ832
♥ K87
♦ K
♣ Q832



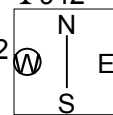
♠ 1065
♥ A1052
♦ AQ
♣ J1094

♠ A9
♥ J64
♦ J984
♣ K765

44

♠ AJ10986
♥ Q
♦ 1043
♣ 942

♠ K
♥ J10762
♦ A9
♣ AKJ75



♠ Q42
♥ 543
♦ KQJ2
♣ 1063

♠ 753
♥ AK98
♦ 8765
♣ Q8

Board (42)

N-S	E-W	Contract	L	N-S	E-W	IMP
21	39	2S	E 5 CJ			200
39	21	3H	S-2 S6			200

Board (43)

N-S	E-W	Contract	L	N-S	E-W	IMP
21	39	4S	W-2 CA			100
39	21	3D	N 3 S5			110

Board (44)

N-S	E-W	Contract	L	N-S	E-W	IMP
21	39	4H	W-1 HQ			50
39	21	4H	W-2 SA			100