

4

♠ Q7
 ♥ 873
 ♦ 108763
 ♣ Q65
 ♠ K1092
 ♥ AQJ
 ♦ A4
 ♣ A1084
 N
 W
 E
 S
 ♠ 864
 ♥ 10962
 ♦ 52
 ♣ KJ73
 ♠ AJ53
 ♥ K54
 ♦ KQJ9
 ♣ 92

Board (4) Av: NS=-90

N-S	E-W	Contract	L	N-S	E-W	IMP
1	4	2H	E 3 DK		140	-2
4	1	2NT	W 3 D8		150	-2
2	28	3C	W 4 D3		130	-1
28	2	2C	W 4 D5		130	-1
3	13	1NT	W 2 D8		120	-1
13	3	1NT	W 3 D6		150	-2
5	15	1S	W 1 D7		80	0
15	5	2NT	W 2 D6		120	-1
6	35	1NT	E 1 H2		90	0
35	6	2S	W 4 D3		170	-2
7	31	3H	E 3 DK		140	-2
31	7	1NT	N 1 S4	90		5
8	9	1NT	W 1 D8		90	0
9	8	1NT	W 1 D6		90	0
10	53	3H	E 3 DK		140	-2
53	10	3D	N-3 HT		300	-5
11	34	3D	N-2 C7		200	-3
34	11	1NT	W 4 D6		180	-3
12	52	2D	N-1 D5		100	0
52	12	1NT	W-1 D6	100		5
14	33	3C	W 4 SQ		130	-1
33	14	3H	E 4 DK		170	-2
16	41	3C	W 5 SQ		150	-2
41	16	2H	E 4 DK		170	-2
17	37	2NT	W 2 D6		120	-1
37	17	2D	N-1 C3		100	0
18	36	1D	N 2 C3	90		5
36	18	1NT	W-1 D4	100		5
19	38	2D	N-1 C7		100	0
38	19	1NT	W 2 D2		120	-1
20	32	2D	N 2 S6	90		5
32	20	3D	N-2 C3		200	-3
21	48	1NT	W 2 D6		120	-1
48	21	1NT	W 1 D6		90	0
22	39	2D	N 2 S2	90		5
39	22	2D	N 2 S4	90		5
24	30	2H	E 2 H2		110	-1
30	24	3C	W 3 D3		110	-1
25	29	1NT	W 3 D8		150	-2
29	25	1NT	W-1 D8	100		5
26	51	3C	W 3 D3		110	-1
51	26	1H	E 2 DK		110	-1
27	45	1D	N 1 C7	70		4
45	27	4S	W-4 D3	400		10
40	42	2C	W 4 H8		130	-1
42	40	1NT	W 1 D6		90	0
43	44	1S	W 2 D2		110	-1
44	43	3C	W 4 D3		130	-1
46	50	4H	E 4 DK		620	-11
50	46	2D	N-1 C3		100	0
47	49	1NT	W 2 D6		120	-1
49	47	2NT	W 2 D6		120	-1

5

♠ 852
 ♥ KQJ63
 ♦ 5
 ♣ AQ54
 ♠ 107
 ♥ A87
 ♦ KQJ43
 ♣ J83
 N
 W
 E
 S
 ♠ 43
 ♥ 105
 ♦ A9762
 ♣ K1097
 ♠ AKQJ96
 ♥ 942
 ♦ 108
 ♣ 62

Board (5) Av: NS=+390

N-S	E-W	Contract	L	N-S	E-W	IMP
1	4	5S	S-1 DK		100	-10
4	1	5Dx	W-2 HK	300		-3
2	28	4S	N 5 S3	650		6
28	2	5Dx	W-3 CA	500		3
3	13	4S	S 4 DK	620		6
13	3	4S	S 4 DK	620		6
5	15	5Dx	W-2 HK	300		-3
15	5	5S	S-1 C3		100	-10
6	35	4S	N 5 DA	650		6
35	6	5Dx	W-2 HQ	300		-3
7	31	5Dx	W-2 HK	300		-3
31	7	5Dx	E-2 HK	300		-3
8	9	5S	S-1 DK		100	-10
9	8	4S	S 4 DK	620		6
10	53	5Dx	W-1 D2	100		-7
53	10	5Dx	W-2 HK	300		-3
11	34	5Dx	W-2 HK	300		-3
34	11	5D	W-2 HK	100		-7
12	52	4S	S 4 DK	620		6
52	12	4S	S 4 DK	620		6
14	33	5Dx	W-2 HK	300		-3
33	14	5S	N-1 DK		100	-10
16	41	4H	N 5 S4	650		6
41	16	4S	S 4 DK	620		6
17	37	5H	N 5 DA	650		6
37	17	5S	S 5 ST	650		6
18	36	3H	N 5 S4	200		-5
36	18	4H	N 5 D6	650		6
19	38	4S	S 5 DK	650		6
38	19	5Dx	W-2 HK	300		-3
20	32	4S	S 4 DK	620		6
32	20	5S	S-1 DK		100	-10
21	48	4H	N 5 CT	650		6
48	21	4S	S 5 DK	650		6
22	39	5D	W-2 S8	100		-7
39	22	4H	N 5 S4	650		6
24	30	5Dx	W-3 HK	500		3
30	24	5S	S-1 DK		100	-10
25	29	4S	S 4 DK	620		6
29	25	4S	S 4 DK	620		6
26	51	4S	S 4 DK	620		6
51	26	5H	N 5 DA	650		6
27	45	5S	S 5 DQ	650		6
45	27	5S	N 5 DK	650		6
40	42	5S	S-1 DK		100	-10
42	40	5Dx	W-2 HK	300		-3
43	44	5Dx	W-2 HK	300		-3
44	43	5Dx	W-2 HK	300		-3
46	50	5S	S-1 DK		100	-10
50	46	4S	S 4 DK	620		6
47	49	5S	S 5 DK	650		6
49	47	5S	S-1 DK		100	-10

6

♠ K8
 ♥ J5
 ♦ Q32
 ♣ AQJ862
 ♠ A432
 ♥ A943
 ♦ K975
 ♣ 10
 N
 W
 E
 S
 ♠ 1065
 ♥ KQ82
 ♦ AJ10
 ♣ 953
 ♠ QJ97
 ♥ 1076
 ♦ 864
 ♣ K74

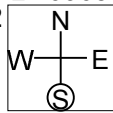
Board (6) Av: NS=-210

N-S	E-W	Contract	L	N-S	E-W	IMP
1	4	2H	E 4 SQ		170	1
4	1	3C	N-2 HK		100	3
2	28	4H	E-1 CK	100		7
28	2	4H	E-1 SQ	100		7
3	13	3H	E 4 C2		170	1
13	3	3H	E 5 H6		200	0
5	15	3H	E 5 C4		200	0
15	5	3D	W 3 CA		110	3
6	35	2H	E 3 SK		140	2
35	6	3H	E 5 C4		200	0
7	31	3H	E 4 CK		170	1
31	7	4H	W 4 CA		620	-9
8	9	2C	N-1 HK		50	4
9	8	4H	E 5 H3		650	-10
10	53	4S	E 5 CA		650	-10
53	10	3C	N-2 C3		100	3
11	34	1NxxN	N-3 H2		1000	-13
34	11	4H	E 4 C4		620	-9
12	52	3H	W 4 CA		170	1
52	12	3C	N-2 C5		100	3
14	33	3C	N 3 C3	110		8
33	14	4H	W 4 SK		620	-9
16	41	3C	N-2 C5		100	3
41	16	3Cx	N 3 C3	470		12
17	37	3H	W 4 SK		170	1
37	17	4H	W 4 CA		620	-9
18	36	3H	W 4 D2		170	1
36	18	2C	N 2 HK	90		7
19	38	2C	N-1 HK		50	4
38	19	3C	N-2 C3		100	3
20	32	4H	W 4 HJ		620	-9
32	20	3C	N-2 HK		100	3
21	48	4C	N-3 C3		150	2
48	21	3H	E 5 C4		200	0
22	39	3H	W 5 CA		200	0
39	22	2H	E 5 C3		200	0
24	30	2D	W 3 D2		110	3
30	24	3C	N-1 C5		50	4
25	29	4C	N-3 C2		150	2
29	25	3H	E 5 C4		200	0
26	51	4H	W 5 CA		650	-10
51	26	2S	W 2 HJ		110	3
27	45	3C	N-1 DA		50	4
45	27	2H	W 4 SK		170	1
40	42	4H	W 4 CA		620	-9
42	40	2C	N-1 HK		50	4
43	44	4H	W-1 CA	100		7
44	43	4H	E 5 C4		650	-10
46	50	3H	W 5 CA		200	0
50	46	3H	W 5 CA		200	0
47	49	3H	E 5 C3		200	0
49	47	3C	N-2 HK		100	3

7

♠K4
♥AK76
♦J3
♣109652

♠A9852
♥J108
♦A102
♣Q4



♠QJ106
♥93
♦Q874
♣A83

♠73
♥Q542
♦K965
♣KJ7

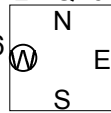
Board (7) Av: NS=+30

N-S	E-W	Contract	L	N-S	E-W	IMP
1	4	3S	W-1 HA	100		2
4	1	3S	W-1 HA	100		2
2	28	3S	W-1 HA	100		2
28	2	3S	W-1 HA	100		2
3	13	3S	W 3 DJ		140	-5
13	3	3S	W 3 HA		140	-5
5	15	2H	N-1 SQ		100	-4
15	5	3S	W-1 HA	100		2
6	35	3H	N-1 D2		100	-4
35	6	3S	W-1 HK	100		2
7	31	Passout				-1
31	7	3S	W-1 HA	100		2
8	9	3S	W 3 HK		140	-5
9	8	3S	W-1 HA	100		2
10	53	3S	W-1 H2	100		2
53	10	3S	W-1 HA	100		2
11	34	3S	W-1 HA	100		2
34	11	3S	W-1 HA	100		2
12	52	3S	W-1 HA	100		2
52	12	2S	W 3 HA		140	-5
14	33	Passout				-1
33	14	2S	W 2 HK		110	-4
16	41	2S	W 3 HA		140	-5
41	16	3S	W-1 HK	100		2
17	37	3H	S 3 SA	140		3
37	17	Passout				-1
18	36	Passout				-1
36	18	Passout				-1
19	38	3H	S 3 HJ	140		3
38	19	3S	W-1 HK	100		2
20	32	Passout				-1
32	20	3H	S 3 SA	140		3
21	48	3H	S 3 SA	140		3
48	21	3S	W-1 HA	100		2
22	39	3S	W 3 HK		140	-5
39	22	3H	S-1 SA		100	-4
24	30	2S	W 2 C2		110	-4
30	24	3S	W-1 HK	100		2
25	29	3S	W-1 C9	100		2
29	25	3S	W-1 HA	100		2
26	51	2H	N 2 SQ	110		2
51	26	Passout				-1
27	45	Passout				-1
45	27	3S	W-1 C2	100		2
40	42	3S	W-1 HA	100		2
42	40	2NT	S-2 SQ		200	-6
43	44	3H	N-1 SQ		100	-4
44	43	2S	W 2 C2		110	-4
46	50	Passout				-1
50	46	3S	W-1 HA	100		2
47	49	Passout				-1
49	47	3S	W-1 HA	100		2

8

♠A1085
♥42
♦86
♣AQ764

♠94
♥AKJ96
♦Q973
♣52



♠Q762
♥10873
♦AKJ
♣109

♠KJ3
♥Q5
♦10542
♣KJ83

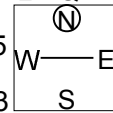
Board (8) Av: NS=-130

N-S	E-W	Contract	L	N-S	E-W	IMP
1	4	3H	W 4 H4		170	-1
4	1	Passout				4
2	28	3H	W 4 D8		170	-1
28	2	2H	W 4 D5		170	-1
3	13	2H	W 4 D8		170	-1
13	3	Passout				4
5	15	4H	W 4 H2		420	-7
15	5	3H	W 4 D8		170	-1
6	35	Passout				4
35	6	3H	W 4 D8		170	-1
7	31	4Hx	W 4 D8		590	-10
31	7	4H	W-1 CA	50		5
8	9	3H	W 4 D8		170	-1
9	8	3H	W 4 D8		170	-1
10	53	3H	W 4 H2		170	-1
53	10	5Cx	N-2 DA		300	-5
11	34	3H	W 4 H2		170	-1
34	11	3H	W 4 D8		170	-1
12	52	3H	W 4 D8		170	-1
52	12	4H	W 4 D8		420	-7
14	33	4H	E 4 H2		420	-7
33	14	Passout				4
16	41	4C	N-2 DK		100	1
41	16	3H	W 3 CA		140	0
17	37	3H	W 3 CA		140	0
37	17	Passout				4
18	36	Passout				4
36	18	Passout				4
19	38	3H	W 3 CA		140	0
38	19	Passout				4
20	32	Passout				4
32	20	2H	W 4 H2		170	-1
22	39	4H	W 4 SA		420	-7
39	22	Passout				4
23	48	4C	N-2 DA		100	1
48	23	Passout				4
24	30	Passout				4
30	24	Passout				4
25	29	3H	W 4 D8		170	-1
29	25	3H	W 4 D8		170	-1
26	51	3H	W 4 C5		170	-1
51	26	1H	W 4 D8		170	-1
27	45	3H	W 4 D8		170	-1
45	27	4H	W-1 SA	50		5
40	42	Passout				4
42	40	Passout				4
43	44	4C	S-1 HK		50	2
44	43	Passout				4
46	50	4H	W-1 CA	50		5
50	46	4H	W 4 D8		420	-7
47	49	2H	W 4 D8		170	-1
49	47	3H	W 3 CA		140	0

9

♠J96
♥AQJ
♦10543
♣AQ7

♠K3
♥10975
♦Q86
♣KJ103



♠10742
♥864
♦AK72
♣82

♠AQ85
♥K32
♦J9
♣9654

Board (9) Av: NS=+70

N-S	E-W	Contract	L	N-S	E-W	IMP
1	4	2NT	N 2 DA	120		2
4	1	1NT	N 2 H8	120		2
2	28	1NT	S 2 HT	120		2
28	2	2NT	N 2 S2	120		2
3	13	1NT	N 2 C8	120		2
13	3	1NT	N 2 H6	120		2
5	15	1NT	N 1 DA	90		1
15	5	1NT	N 1 H8	90		1
6	35	1NT	N 2 H5	120		2
35	6	1NT	N 1 H6	90		1
7	31	1NT	S 3 C8	150		2
31	7	3NT	N-1 S4		50	-3
8	9	1NT	N 2 C8	120		2
9	8	3NT	N-1 C8		50	-3
10	53	2NT	N 3 D2	150		2
53	10	3NT	N-1 S2		50	-3
11	34	1NT	N 1 H8	90		1
34	11	1NT	N 3 H8	150		2
12	52	3NT	N-1 H8		50	-3
52	12	1NT	N 2 C8	120		2
14	33	2NT	N 2 S2	120		2
33	14	1NT	N 1 H8	90		1
16	41	3NT	N-2 C8		100	-5
41	16	1NT	N 1 D2	90		1
17	37	1NT	N 3 C8	150		2
37	17	1NT	N 2 C8	120		2
18	36	1NT	N 1 DK	90		1
36	18	1NT	N 3 S2	150		2
19	38	1NT	N 2 H8	120		2
38	19	1NT	N 1 C8	90		1
20	32	1NT	N 1 H6	90		1
32	20	1NT	N 1 H8	90		1
22	39	1NT	N 1 H7	90		1
39	22	1NT	S 1 CJ	90		1
23	48	1NT	N-1 H8		50	-3
48	23	1NT	N 2 C8	120		2
24	30	3NT	N-1 S2		50	-3
30	24	3NT	N-2 DK		100	-5
25	29	1NT	N 1 C2	90		1
29	25	1NT	N 1 H8	90		1
26	51	1NT	N 2 C8	120		2
51	26	3NT	N-2 C8		100	-5
27	45	3NT	N-2 D2		100	-5
45	27	1NT	N 3 H5	150		2
40	42	1NT	N-1 H6		50	-3
42	40	1NT	N 2 C8	120		2
43	44	3NT	N-1 S2		50	-3
44	43	1NT	S 1 C8	90		1
46	50	3C	N-2 C6		100	-5
50	46	3NT	N-2 H8		100	-5
47	49	1NT	N 3 C8	150		2
49	47	1NT	N 2 C8	120		2

21st NEC CUP Qualifying Round 5 Wednesday, February 08, 2017

10

♠QJ
♥AJ532
♦A10742
♣2

♠A8654
♥Q64
♦J5
♣865

♠K97
♥1097
♦K63
♣AK74

♠1032
♥K8
♦Q98
♣QJ1093

N
W—E
S

11

♠3
♥Q987542
♦6432
♣10

♠AKJ42
♥K63
♦Q9
♣854

♠Q76
♥J
♦AK8
♣AK9632

♠10985
♥A10
♦J1075
♣QJ7

N
W—E
S

12

♠4
♥Q654
♦J832
♣Q862

♠AQ108
♥KJ107
♦AK7
♣73

♠K963
♥92
♦Q654
♣KJ10

♠J752
♥A83
♦109
♣A954

N
W—E
S

Board (10) Av: NS=+620

Board (11) Av: NS=+100

Board (12) Av: NS=-320

Board (10)				Board (11)				Board (12)							
N-S	E-W	Contract	L	N-S	E-W	Contract	L	N-S	E-W	Contract	L	N-S	E-W	IMP	
1	4	4H	N 5 C6	650	1	1	4 3S	E 3 CK	140	-6	1	4 4S	E 4 D5	420	-3
4	1	4H	N 5 DJ	650	1	4	1 4Sx	E-1 DK	100	0	4	1 4S	E 4 H9	420	-3
2	28	4H	S 5 CQ	650	1	2	28 4H	S-1 ST	50	-4	2	28 4S	E 4 D5	420	-3
28	2	4H	N 4 C5	620	0	28	2 3NT	S-3 ST	150	-6	28	2 4S	E 5 H9	450	-4
3	13	4H	S 4 CQ	620	0	3	13 3H	N 4 SA	170	2	3	13 4S	W-1 S2	50	9
13	3	4H	N 5 S5	650	1	13	3 3C	S-2 S3	100	-5	13	3 4S	W 5 S5	450	-4
5	15	4H	S 4 CQ	620	0	5	15 3C	S-2 ST	100	-5	5	15 4S	E 4 H9	420	-3
15	5	4H	S 4 CQ	620	0	15	5 3S	E-2 CA	100	0	15	5 4S	E 5 H9	450	-4
6	35	3NT	N 4 CQ	630	0	6	35 4Sx	E-1 DK	100	0	6	35 4S	W 4 C6	420	-3
35	6	4H	N 4 C5	620	0	35	6 3S	E-2 CK	100	0	35	6 4S	E 5 H9	450	-4
7	31	4H	S 4 CQ	620	0	7	31 5Sx	W-4 CT	800	12	7	31 4S	E 4 D5	420	-3
31	7	4H	N 5 S4	650	1	31	7 4H	N-1 SA	50	-4	31	7 4S	W 5 D2	450	-4
8	9	4H	N 4 SA	620	0	8	9 3S	E-2 CK	100	0	8	9 4S	E 4 D5	420	-3
9	8	4H	N 4 C3	620	0	9	8 3H	N 3 SA	140	1	9	8 4S	E 5 H9	450	-4
10	53	4H	N 5 SA	650	1	10	53 3S	E-2 CA	100	0	10	53 4S	W-1 C2	50	9
53	10	4H	N 5 DJ	650	1	53	10 4H	N-2 SA	100	-5	53	10 4S	E 5 D5	450	-4
11	34	4H	N 5 DJ	650	1	11	34 3S	E-2 CA	100	0	11	34 4S	W 5 D3	450	-4
34	11	4H	N 4 C5	620	0	34	11 3S	E-1 CA	50	-2	34	11 4S	E 4 CJ	420	-3
12	52	4H	N 6 DJ	680	2	12	52 3H	N 4 SK	170	2	12	52 4S	W 4 C6	420	-3
52	12	4H	N 5 DJ	650	1	52	12 4H	N-1 SA	50	-4	52	12 4S	W 5 D3	450	-4
14	33	4H	N 5 C5	650	1	14	33 4H	N-1 SA	50	-4	14	33 4S	E 4 H9	420	-3
33	14	4H	N 4 C5	620	0	33	14 3S	E-1 CA	50	-2	33	14 4S	E 5 H9	450	-4
16	41	4H	N 5 C5	650	1	16	41 3S	E-2 CA	100	0	16	41 2H	E 3 H2	140	5
41	16	4H	N 5 S4	650	1	41	16 3S	E-2 DA	100	0	41	16 4S	W-2 D3	100	9
17	37	4H	N 5 DJ	650	1	17	37 4H	N 4 SA	420	8	17	37 4S	W-1 D3	50	9
37	17	4H	N 6 DJ	680	2	37	17 3S	E-2 CK	100	0	37	17 4S	E 5 D5	450	-4
18	36	4H	N 5 D5	650	1	18	36 3S	E-2 CA	100	0	18	36 4S	W 4 C2	420	-3
36	18	4H	N 5 DJ	650	1	36	18 4S	E-3 CA	150	2	36	18 4S	W 4 D3	420	-3
19	38	4H	N 5 SA	650	1	19	38 3S	E-1 CK	50	-2	19	38 4S	E 5 D5	450	-4
38	19	4H	N 5 DJ	650	1	38	19 5C	S-2 ST	100	-5	38	19 3NT	E 5 S3	460	-4
20	32	4H	N 4 SA	620	0	20	32 4H	N 5 SA	450	8	20	32 3NT	E 3 D4	400	-2
32	20	4H	N 4 DJ	620	0	32	20 4C	S-2 ST	100	-5	32	20 4S	W-1 C2	50	9
22	39	4H	N-1 SA	100	-12	22	39 3Sx	E-2 CK	300	5	22	39 4S	W 5 C2	450	-4
39	22	4H	N 5 DJ	650	1	39	22 3Cx	S 3 ST	470	9	39	22 3NT	E 4 S3	430	-3
23	48	4H	N 5 C5	650	1	23	48 3S	E-1 HJ	50	-2	23	48 4S	W-1 C2	50	9
48	23	4H	N 4 SA	620	0	48	23 3Sx	E-1 DA	100	0	48	23 4S	E-1 D5	50	9
24	30	4H	S 4 CQ	620	0	24	30 4H	N-1 SA	50	-4	24	30 4S	W 4 D3	420	-3
30	24	4H	N 5 DJ	650	1	30	24 4S	E-3 CK	150	2	30	24 3NT	E 4 S3	430	-3
25	29	3NT	S 3 CJ	600	-1	25	29 3S	E-2 CA	100	0	25	29 4S	E 5 H9	450	-4
29	25	4H	N 4 C5	620	0	29	25 4H	N-1 SA	50	-4	29	25 4S	E-1 D5	50	9
26	51	4H	N 5 C8	650	1	26	51 4Sx	E-1 CA	100	0	26	51 4S	W 4 C5	420	-3
51	26	4H	N 4 C5	620	0	51	26 4H	N 4 SA	420	8	51	26 4S	E 5 H9	450	-4
27	45	4H	N 4 SA	620	0	27	45 4Sx	E-3 CK	500	9	27	45 4S	W 5 S4	450	-4
45	27	4H	N 5 C8	650	1	45	27 4S	E-2 HJ	100	0	45	27 4S	E 4 D5	420	-3
40	42	4H	N 5 DJ	650	1	40	42 4H	N-2 SK	100	-5	40	42 4S	W-1 C2	50	9
42	40	4H	N 5 DJ	650	1	42	40 4S	E-3 CK	150	2	42	40 4S	E 5 D4	450	-4
43	44	4H	N 5 DJ	650	1	43	44 4H	N 4 SA	420	8	43	44 4S	W 4 C6	420	-3
44	43	4H	N 5 DJ	650	1	44	43 4H	N-1 SA	50	-4	44	43 4S	W 4 H5	420	-3
46	50	4H	N-1 C5	100	-12	46	50 3S	E-2 CA	100	0	46	50 4S	E-1 D6	50	9
50	46	3NT	S 4 CQ	630	0	50	46 4H	N-1 SA	50	-4	50	46 4S	W-1 C6	50	9
47	49	4H	N 5 DJ	650	1	47	49 4S	E-3 DA	150	2	47	49 4H	E 4 H9	420	-3
49	47	4H	N 6 DJ	680	2	49	47 3S	E-1 CK	50	-2	49	47 4S	W-1 C6	50	9

13

♠ Q1063
♥ 106
♦ K652
♣ AKJ

♠ AK75
♥ 85
♦ AJ108
♣ 1062

♠ 842
♥ AK732
♦ 43
♣ 953

14

♠ KQ1062
♥ 10965
♦ 9
♣ KQ5

♠ 54
♥ AKQJ4
♦ 10752
♣ 62

♠ 873
♥ 32
♦ Q843
♣ A987

36

♠ K1084
♥ 1062
♦ 1098643
♣

♠ 9
♥ K4
♦ AJ752
♣ AJ1098

♠ AQJ762
♥ 87
♦
♣ K7432

Board (13) Av: NS=-30

N-S	E-W	Contract	L	N-S	E-W	IMP
1	4	1NT S-1	HQ		100	-2
4	1	1S N 1	SA	80		3
2	28	1NT W 1	D5		90	-2
28	2	1S N 1	S2	80		3
3	13	2H N 2	SA	110		4
13	3	1S N 1	S5	80		3
5	15	2NT W-1	HT	100		4
15	5	1S N 1	C2	80		3
6	35	2S N-1	H3		100	-2
35	6	2H S-2	C7		200	-5
7	31	1NT N 2	DJ	120		4
31	7	1NT N 1	SA	90		3
8	9	1S N-1	H8		100	-2
9	8	1S N 1	H8	80		3
10	53	3D W-2	CA	200		6
53	10	1NT S-2	C4		200	-5
11	34	1NT N-3	H8		300	-7
34	11	1NT N-1	CT		100	-2
12	52	3C W-1	CK	100		4
52	12	1NT N-2	H8		200	-5
14	33	3C W-1	HT	100		4
33	14	1S N-1	H8		100	-2
16	41	1NT N 1	CT	90		3
41	16	1NT S-2	C4		200	-5
17	37	1NT N-1	H8		100	-2
37	17	1S N 1	S5	80		3
18	36	1NT S-2	C4		200	-5
36	18	1NT S 1	C3	90		3
19	38	1NT S 1	C4	90		3
38	19	1NT S-1	SJ		100	-2
20	32	1NT N 1	S5	90		3
32	20	1NT S-2	C4		200	-5
22	39	2NT N-1	C6		100	-2
39	22	2H S-1	C6		100	-2
23	48	1NT N-2	C4		200	-5
48	23	1NT N-1	H8		100	-2
24	30	2Sx E-2	HA	500		11
30	24	1NT S-1	SJ		100	-2
25	29	1S N 1	C2	80		3
29	25	2NT W-1	D2		100	4
26	51	1S N 1	H8	80		3
51	26	3C W-1	HT		100	4
27	45	2H S-2	C7		200	-5
45	27	1NT N-1	DJ		100	-2
40	42	1NT S 1	SJ	90		3
42	40	1NT S-1	C4		100	-2
43	44	1NT S-2	C3		200	-5
44	43	1NT S 1	HQ	90		3
46	50	2H S-1	C8		100	-2
50	46	1NT N 1	DJ	90		3
47	49	2S N-2	H8		200	-5
49	47	2H S-1	SJ		100	-2

Board (14) Av: NS=-300

N-S	E-W	Contract	L	N-S	E-W	IMP
1	4	3NT W 3	SQ		400	-3
4	1	3D W 3	SK		110	5
2	28	3NT W 3	SK		400	-3
28	2	3NT W 4	SQ		430	-4
3	13	4H E-1	S2	50		8
13	3	3NT W 3	SK		400	-3
5	15	3NT W 4	SK		430	-4
15	5	4H E 4	S3		420	-3
6	35	3S N-1	D2		50	6
35	6	4H E 4	S3		420	-3
7	31	3H E 3	S3		140	4
31	7	3NT W 3	SK		400	-3
8	9	3NT W 3	SQ		400	-3
9	8	3NT W 3	SQ		400	-3
10	53	3NT W-1	SQ	50		8
53	10	3NT W 3	SQ		400	-3
11	34	3NT W 3	SQ		400	-3
34	11	3NT W 3	SK		400	-3
12	52	2S N-1	HK		50	6
52	12	3NT W 3	SK		400	-3
14	33	2H W 4	SK		170	4
33	14	2NT W 4	SK		180	3
16	41	3NT W 3	SK		400	-3
41	16	3NT W 4	SK		430	-4
17	37	3NT W 3	CK		400	-3
37	17	3NT W 3	SQ		400	-3
18	36	3NT W 3	SK		400	-3
36	18	3D W 4	SK		130	5
19	38	4Sx N-2	HA		300	0
38	19	3NT W 3	SQ		400	-3
20	32	3NT W 3	SQ		400	-3
32	20	3NT W 3	SK		400	-3
22	39	2NT W 2	SK		120	5
39	22	2S N 2	HK	110		9
23	48	4Sx N-3	HK		500	-5
48	23	4H E 4	H3		420	-3
24	30	3NT W-1	SK	50		8
30	24	3NT W 3	SQ		400	-3
25	29	3NT W 4	CK		430	-4
29	25	3NT W 3	SK		400	-3
26	51	3NT W 3	SK		400	-3
51	26	3NT W 3	SK		400	-3
27	45	3NT W 4	S6		430	-4
45	27	3NT W 3	SQ		400	-3
40	42	3NT W 3	SK		400	-3
42	40	3NT W 3	SQ		400	-3
43	44	3S N-3	HA		150	4
44	43	3D W 3	SK		110	5
46	50	3S N-2	HA		100	5
50	46	5H E-2	S3	100		9
47	49	3NT W 3	SQ		400	-3
49	47	3S N-3	HA		150	4

Board (36)

N-S	E-W	Contract	L	N-S	E-W	IMP
21	23	4Sx S-1	DK		200	
23	21	4Sx S 4	DK	790		

37

♠ J
♥ 109432
♦ KQ84
♣ KJ5

♠ AQ10732
♥ AK6
♦ J52
♣ 6

♠ 654
♥ 5
♦ A106
♣ Q109432

♠ K98
♥ QJ87
♦ 973
♣ A87

Diagram: A square with N, S, E, W. A circle with 'N' is above the center, and a circle with 'S' is below the center. A line connects the center to the 'E' side.

38

♠ QJ962
♥ J10942
♦ 6
♣ Q7

♠ K43
♥ K83
♦ A9753
♣ J2

♠ A108
♥ Q76
♦ KQ10
♣ A984

♠ 75
♥ A5
♦ J842
♣ K10653

Diagram: A square with N, S, E, W. A circle with 'N' is above the center, and a circle with 'S' is below the center. A line connects the center to the 'E' side.

39

♠ 1094
♥ KJ963
♦ K95
♣ A8

♠ A
♥ Q104
♦ 108
♣ J976542

♠ QJ76
♥ 85
♦ A7632
♣ K3

♠ K8532
♥ A72
♦ QJ4
♣ Q10

Diagram: A square with N, S, E, W. A circle with 'N' is above the center, and a circle with 'S' is below the center. A line connects the center to the 'E' side.

Board (37)

N-S	E-W	Contract	L	N-S	E-W	IMP
21	23	4S	W 4 HT			420
23	21	4S	W 4 HT			420

Board (38)

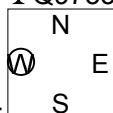
N-S	E-W	Contract	L	N-S	E-W	IMP
21	23	3NT	E 4 C5			630
23	21	3NT	E 3 C5			600

Board (39)

N-S	E-W	Contract	L	N-S	E-W	IMP
21	23	3S	S-1 C6			100
23	21	4S	S-2 C5			200

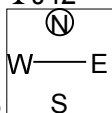
40

♠ Q3
 ♥ J43
 ♦ QJ6
 ♣ Q9753
 ♠ J106
 ♥ KQ10
 ♦ 82
 ♣ KJ864
 ♠ A4
 ♥ 9872
 ♦ AK10953
 ♣ 2
 ♠ K98752
 ♥ A65
 ♦ 74
 ♣ A10



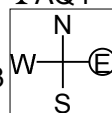
41

♠ KQ9
 ♥ J95
 ♦ K742
 ♣ J42
 ♠ A73
 ♥ AK42
 ♦ 9
 ♣ AQ1096
 ♠ J1086542
 ♥ Q8
 ♦ AQ3
 ♣ K
 ♠ 10763
 ♥ J10865
 ♣ 8753



42

♠ A942
 ♥ 10853
 ♦ J9
 ♣ AQ4
 ♠ K7
 ♥ K94
 ♦ AK86543
 ♣ 6
 ♠ 1053
 ♥ QJ762
 ♦ Q10
 ♣ K107
 ♠ QJ86
 ♥ A
 ♦ 72
 ♣ J98532



Board (40)

N-S	E-W	Contract	L	N-S	E-W	IMP
21	23	3D	E 3 CA			110
23	21	2D	E 4 CA			130

Board (41)

N-S	E-W	Contract	L	N-S	E-W	IMP
21	23	6S	E-1 DJ			100
23	21	5S	E 5 C5			650

Board (42)

N-S	E-W	Contract	L	N-S	E-W	IMP
21	23	4S	S-1 DK			100
23	21	3S	S 3 DK			140