

21st NEC CUP Quarterfinal Round2 Friday, February 10, 2017

**17**

♠AJ3  
♥106432  
♦106  
♣962

♠K754  
♥KQ9  
♦92  
♣10754

♠Q  
♥J87  
♦AKQ843  
♣AKJ

W N E S

♠109862  
♥A5  
♦J75  
♣Q83

Board (17) Av: NS=-450

N-S	E-W	Contract	L	N-S	E-W	IMP
1	6	3NT W 5 H6		460		0
6	1	3NT W 5 H3		460		0
2	8	3NT W 5 H6		460		0
8	2	3NT E 4 S9		430		1
3	7	3NT E 3 SA		400		2
7	3	3NT W 5 H2		460		0
4	5	3NT E 3 ST		400		2
5	4	3NT W 5 H3		460		0

**18**

♠AKJ95  
♥K1074  
♦J  
♣963

♠76432  
♥9  
♦94  
♣AK742

♠Q532  
♦A752  
♣QJ1085

W N E S

♠Q108  
♥AJ86  
♦KQ10863  
♣

Board (18) Av: NS=+360

N-S	E-W	Contract	L	N-S	E-W	IMP
1	6	5Dx S-1 H9		200		-11
6	1	4H S 4 CA		620		6
2	8	4H S 4 CA		620		6
8	2	5S N 6 C5		680		8
3	7	4H N 4 CQ		620		6
7	3	4S N-2 CQ		200		-11
4	5	4Hx N 4 CQ		790		10
5	4	2Cx W 4 DJ		380		-12

**19**

♠9732  
♥AQ4  
♦542  
♣J72

♠8  
♥K107532  
♦AJ  
♣A954

♠Q54  
♥98  
♦Q986  
♣K1086

W N E S

♠AKJ106  
♥J6  
♦K1073  
♣Q3

Board (19) Av: NS=-30

N-S	E-W	Contract	L	N-S	E-W	IMP
1	6	4S S-3 H9		150		-3
6	1	3S S-2 H9		100		-2
2	8	3H E-1 SA		100		4
8	2	4H E-4 SA		400		10
3	7	3S S-1 H9		50		-1
7	3	3S S-2 D2		100		-2
4	5	2S S 2 H9		110		4
5	4	3H E 3 SA		140		-3

**20**

♠QJ742  
♥QJ  
♦52  
♣A432

♠95  
♥K76  
♦KQJ1087  
♣75

♠1063  
♥1083  
♦94  
♣KJ1096

W N E S

♠AK8  
♥A9542  
♦A63  
♣Q8

Board (20) Av: NS=+500

N-S	E-W	Contract	L	N-S	E-W	IMP
1	6	4S N-1 DK		100		-12
6	1	3NT S 3 D9		600		3
2	8	3NT S 3 D9		600		3
8	2	3NT S-2 D9		200		-12
3	7	3NT S 3 D9		600		3
7	3	4S S 5 DK		650		4
4	5	4S N 4 DK		620		3
5	4	4S N 5 DK		650		4

**21**

♠Q432  
♥K75  
♦43  
♣AK42

♠A75  
♥43  
♦KJ952  
♣763

♠J106  
♥AJ102  
♦876  
♣J85

W N E S

♠K98  
♥Q986  
♦AQ10  
♣Q109

Board (21) Av: NS=+620

N-S	E-W	Contract	L	N-S	E-W	IMP
1	6	3NT S 4 D8		630		0
6	1	3NT S 5 HT		660		1
2	8	3NT S 3 D6		600		-1
8	2	3NT S 3 SJ		600		-1
3	7	3NT N-2 D5		200		-13
7	3	3NT S 5 SJ		660		1
4	5	3NT S 3 D8		600		-1
5	4	3NT S 3 D6		600		-1

**22**

♠Q3  
♥AQ98  
♦QJ103  
♣J52

♠J8765  
♥J654  
♦6  
♣1084

♠10  
♥2  
♦AK9875  
♣AQ963

W N E S

♠AK942  
♥K1073  
♦42  
♣K7

Board (22) Av: NS=+90

N-S	E-W	Contract	L	N-S	E-W	IMP
1	6	4H S-1 DK		50		-4
6	1	4H S-1 DA		50		-4
2	8	4H S 4 DA		420		8
8	2	4H S-1 DA		50		-4
3	7	4H S 4 DA		420		8
7	3	3C E 3 SA		110		-5
4	5	3S S 3 DA		140		2
5	4	4C E-1 SA		100		0

**23**

♠86  
♥AK10972  
♦87  
♣AQ9

♠10754  
♥QJ5  
♦943  
♣K82

♠Q9  
♥843  
♦KJ1065  
♣J73

W N E S

♠AKJ32  
♥6  
♦AQ2  
♣10654

Board (23) Av: NS=+650

N-S	E-W	Contract	L	N-S	E-W	IMP
1	6	3NT S 4 D2		630		-1
6	1	4S S 4 DJ		620		-1
2	8	3NT S 6 DJ		690		1
8	2	4H S 4 H3		620		-1
3	7	3NT S 5 DT		660		0
7	3	3NT S 5 D2		660		0
4	5	3NT S 5 DJ		660		0
5	4	3NT S 5 D5		660		0

**24**

♠QJ4  
♥K8742  
♦75  
♣Q109

♠K53  
♥J96  
♦KQJ942  
♣2

♠98762  
♥Q  
♦A8  
♣KJ874

W N E S

♠A10  
♥A1053  
♦1063  
♣A653

Board (24) Av: NS=+100

N-S	E-W	Contract	L	N-S	E-W	IMP
1	6	2D E 3 SA		110		-5
6	1	3D E-2 D6		100		0
2	8	3S W-3 H4		150		2
8	2	3D E-1 SA		50		-2
3	7	3D E-2 SA		100		0
7	3	4S W-2 D7		100		0
4	5	4S W-2 H2		100		0
5	4	4S W-3 H2		150		2

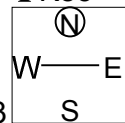
21st NEC CUP Quarterfinal Round2 Friday, February 10, 2017

25

♠Q43  
♥QJ1074  
♦Q6  
♣K85

♠96  
♥A95  
♦874  
♣AQJ43

♠AKJ7  
♥K62  
♦K103  
♣1062



♠10852  
♥83  
♦AJ952  
♣97

Board (25) Av: NS=-130

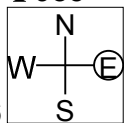
N-S	E-W	Contract	L	N-S	E-W	IMP
1	6	3NT E-1	D5	100		6
6	1	3NT E 3	H8		600	-10
2	8	3NT E-1	D5	100		6
8	2	3NT E-1	D6	100		6
3	7	3NT W-3	HQ	300		10
7	3	3NT E-1	D5	100		6
4	5	3NT W 3	HQ		600	-10
5	4	3NT E 4	S2		630	-11

26

♠A1064  
♥AQ5  
♦K73  
♣985

♠K832  
♥98  
♦952  
♣KJ106

♠J95  
♥KJ10642  
♦10  
♣AQ3



♠Q7  
♥73  
♦AQJ864  
♣742

Board (26) Av: NS=-80

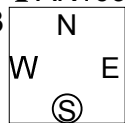
N-S	E-W	Contract	L	N-S	E-W	IMP
1	6	2H E 4	C2		170	-3
6	1	3NT N-1	CA		100	-1
2	8	2H E 2	C4		110	-1
8	2	2H E 3	C2		140	-2
3	7	2H E 3	C4		140	-2
7	3	2S E-1	D2	100		5
4	5	3NT N 3	HJ	600		12
5	4	2H E 2	SQ		110	-1

27

♠J105  
♥9  
♦952  
♣AK10963

♠KQ8643  
♥KQ7  
♦6  
♣Q72

♠A  
♥J8652  
♦KQJ843  
♣J



♠972  
♥A1043  
♦A107  
♣854

Board (27) Av: NS=+40

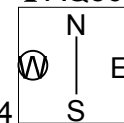
N-S	E-W	Contract	L	N-S	E-W	IMP
1	6	4H E-1	C4	50		0
6	1	3NT W 3	H9		400	-10
2	8	4S W-3	CK	150		3
8	2	4S W-1	CA	50		0
3	7	4H E-1	C8	50		0
7	3	3D E 3	C4		110	-4
4	5	3NT W-3	CT	150		3
5	4	4H E-1	C8	50		0

28

♠KJ5  
♥AKJ83  
♦A  
♣AQ86

♠AQ8  
♥Q764  
♦5  
♣KJ1094

♠109732  
♥1095  
♦1074  
♣53



♠64  
♥2  
♦KQJ98632  
♣72

Board (28) Av: NS=+1250

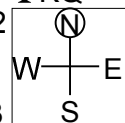
N-S	E-W	Contract	L	N-S	E-W	IMP
1	6	6D S 6	CJ	1370		3
6	1	5D S 6	SA	620		-12
2	8	6D S 6	SA	1370		3
8	2	6D S 6	SA	1370		3
3	7	5D S 7	H6	640		-12
7	3	6D S 6	C2	1370		3
4	5	6D S 7	D5	1390		4
5	4	6D S 6	SA	1370		3

29

♠Q763  
♥KJ63  
♦875  
♣KQ

♠AK982  
♥Q9  
♦92  
♣A1093

♠J105  
♥87542  
♦J104  
♣86



♠4  
♥A10  
♦AKQ63  
♣J7542

Board (29) Av: NS=+370

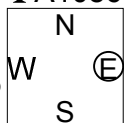
N-S	E-W	Contract	L	N-S	E-W	IMP
1	6	3NT N 3	SJ	600		6
6	1	2D S 4	SA	130		-6
2	8	5D S-1	SK		100	-10
8	2	3NTxN 4	C8	950		11
3	7	2D S 5	SA	150		-6
7	3	2D S 4	D2	130		-6
4	5	3NT N 3	SJ	600		6
5	4	3NT N 3	SJ	600		6

30

♠AQ8765  
♥K83  
♦K83  
♣A1086

♠652  
♥104  
♦AQ1065  
♣K92

♠QJ74  
♥K3  
♦972  
♣J743



♠AK10983  
♥J92  
♦J4  
♣Q5

Board (30) Av: NS=+430

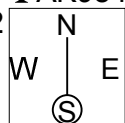
N-S	E-W	Contract	L	N-S	E-W	IMP
1	6	4H N 5	D2	450		1
6	1	4H N 4	D2	420		0
2	8	4H N 4	D7	420		0
8	2	4H N 4	H3	420		0
3	7	4H N 5	C3	450		1
7	3	4H N 4	D2	420		0
4	5	4H S 4	H4	420		0
5	4	4H N 5	C4	450		1

31

♠AQ5  
♥KJ  
♦953  
♣AK984

♠K10982  
♥95  
♦K1062  
♣J10

♠643  
♥Q10642  
♦J  
♣Q753



♠J7  
♥A873  
♦AQ874  
♣62

Board (31) Av: NS=+610

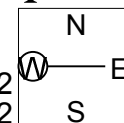
N-S	E-W	Contract	L	N-S	E-W	IMP
1	6	3NT N-1	S6		100	-12
6	1	3NT N 4	S3	630		1
2	8	3NT N 3	S6	600		0
8	2	3NT N 3	S6	600		0
3	7	3NT N 3	H4	600		0
7	3	3NT N 3	S6	600		0
4	5	3NT N 3	S6	600		0
5	4	3NT N 4	H2	630		1

32

♠K7532  
♥854  
♦AJ765  
♣

♠Q96  
♥Q9  
♦K842  
♣K762

♠84  
♥A73  
♦1093  
♣J8543



♠AJ10  
♥KJ1062  
♦Q  
♣AQ109

Board (32) Av: NS=+440

N-S	E-W	Contract	L	N-S	E-W	IMP
1	6	4H S 5	C6	450		0
6	1	4H S 4	D4	420		-1
2	8	4S N 5	HA	450		0
8	2	4S S 5	D2	450		0
3	7	4H S 6	D4	480		1
7	3	4S N 4	HA	420		-1
4	5	4H N 4	C5	420		-1
5	4	4H S 4	H9	420		-1